

MIL ON With DTC(s) P0D2A19, P1C1B00, P0E8919, and/or P1BD300 and Inoperative Onboard Plug-in Charger

Service

Category Engine/Hybrid System
Hybrid/Battery Control

Section System

Market USA and Mexico

Toyota Supports
ASE Certification 

Applicability

YEAR(S)	MODEL(S)	ADDITIONAL INFORMATION
2021 - 2023	RAV4 Prime	

REVISION NOTICE

February 24, 2023 Rev1:

- **Applicability has been updated to include 2023 model year RAV4 Prime vehicles.**
- **The market indicator has been updated to include the Mexico market.**
- **The Production Change Information section has been added.**
- **The Repair Procedure section has been updated.**

Any previous printed versions of this bulletin should be discarded.

Introduction

Some 2021 – 2023 model year RAV4 Prime XSE grade vehicles equipped with a 6.6 kW electric vehicle charger sub-assembly may exhibit a MIL ON condition with one or more of the following Diagnostic Trouble Codes (DTCs):

- P0D2A19 – Hybrid/EV Battery Charger Input Current Sensor Circuit Current Above Threshold
- P1C1B00 – PFC Boosting Circuit Malfunction
- P0E8919 – Charger “B” Input Current Too High Circuit Current Above Threshold
- P1BD300 – Charger “B” PFC Boosting Circuit Malfunction

The vehicle may also exhibit an inoperative onboard plug-in charger. Follow the Repair Procedure in this bulletin to address this condition.

MIL ON With DTC(s) P0D2A19, P1C1B00, P0E8919, and/or P1BD300 and Inoperative Onboard Plug-in Charger

Table of Contents

- [Production Change Information](#)2
- [Warranty Information](#)3
 - [For USA Market](#)3
 - [For Mexico Market](#)3
- [Parts Information](#)4
 - [For USA and Mexico Markets](#).....4
- [Required Tools & Equipment](#)4
- [Repair Procedure](#)4

Production Change Information

This bulletin applies to vehicles produced **BEFORE** the Production Change Effective VINs shown below.

MODEL	PLANT	DRIVETRAIN	PRODUCTION CHANGE EFFECTIVE VIN
RAV4 Prime	TMC	AWD	JTMEB3FV#PD114015
			JTMFB3FV#PD114015
			JTMGB3FV#PD114015
			JTMCB3FV#PD114015
			JTMAB3FV#PD114015

MIL ON With DTC(s) P0D2A19, P1C1B00, P0E8919, and/or P1BD300 and Inoperative Onboard Plug-in Charger

Warranty Information

For USA Market

OP CODE	DESCRIPTION	TIME	OFP	T1	T2
890411	R & R Hybrid or Electric Vehicle Charger Sub-assy	1.2	G9099-#####*	8A	50

*Warranty claim MUST be submitted with the correct 10-digit OFP. Choose the correct OFP for the vehicle being repaired by searching for the parts in the Electronic Parts Catalog using the VIN filter.

APPLICABLE WARRANTY

- This repair is covered under the Toyota Powertrain Warranty. This warranty is in effect for 60 months or 60,000 miles, whichever occurs first, from the vehicle's in-service date.
- Warranty application is limited to occurrence of the specified condition described in this bulletin.
- PZEV vehicles equipped with a California Certified Emission Control System that are registered and operated in California or any state that have adopted the California Emission Warranty – Partial Zero Emission Vehicle (PZEV) Emission Warranty Coverage is in effect for 15 years or 150,000 miles, from the vehicle's in-service date, whichever occurs first. (Please reference Warranty Policy Bulletin POL14-09, Warranty Policy 4.7, and/or the Owner's Warranty & Maintenance Guide for additional information).

For Mexico Market

OP CODE	DESCRIPTION	TIME	OFP	T1	T2
890411	R & R Hybrid or Electric Vehicle Charger Sub-assy	1.2	G9099-#####*	8A	50

*Warranty claim MUST be submitted with the correct 10-digit OFP. Choose the correct OFP for the vehicle being repaired by searching for the parts in the Electronic Parts Catalog using the VIN filter.

APPLICABLE WARRANTY

- This repair is covered under the Toyota Basic Warranty. This warranty is in effect for 36 months or 60,000 kilometers, whichever occurs first, from the vehicle's in-service date.
- Warranty application is limited to occurrence of the specified condition described in this bulletin.

MIL ON With DTC(s) P0D2A19, P1C1B00, P0E8919, and/or P1BD300 and Inoperative Onboard Plug-in Charger

Parts Information

For USA and Mexico Markets

PART NUMBER	PART NAME	QTY
G9099-42051	Charger Sub-assy, Electric Vehicle	1
G9099-42061		

Required Tools & Equipment

REQUIRED EQUIPMENT	SUPPLIER	PART NUMBER	QTY
Techstream ADVi*	ADE	TSADVUNIT	1
Techstream 2.0		TS2UNIT	
Techstream Lite		TSLITEPDLR01	
Techstream Lite (Green Cable)		TSLP2DLR01	

*Essential SST.

NOTE

- Only ONE of the Techstream units listed above is required.
- Software version 17.30.011 or later is required.
- Additional Techstream units may be ordered by calling Approved Dealer Equipment (ADE) at 1-800-368-6787 (USA) or 01-55-50103041 (Mexico).

Repair Procedure

1. Confirm the condition exists.

Does the vehicle exhibit a MIL ON condition with one or more of the following Diagnostic Trouble Codes (DTCs) and/or an inoperative onboard plug-in charger?

- P0D2A19 – Hybrid/EV Battery Charger Input Current Sensor Circuit Current Above Threshold
 - P1C1B00 – PFC Boosting Circuit Malfunction
 - P0E8919 – Charger “B” Input Current Too High Circuit Current Above Threshold
 - P1BD300 – Charger “B” PFC Boosting Circuit Malfunction
- **YES** — Continue to step 2.
 - **NO** — This bulletin does NOT apply. Continue diagnosis using the applicable Repair Manual.

MIL ON With DTC(s) P0D2A19, P1C1B00, P0E8919, and/or P1BD300 and Inoperative Onboard Plug-in Charger

Repair Procedure (continued)

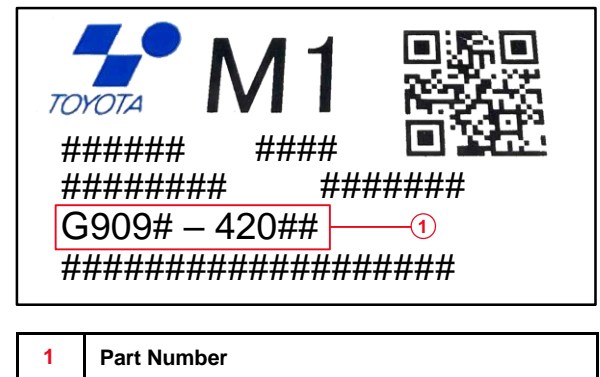
2. Locate the electric vehicle charger sub-assembly in the vehicle and refer to the attached part number.

3. Confirm the vehicle is equipped with a 6.6 kW electric vehicle charger sub-assembly.

Are the last five digits of the part number listed on the label 4205#, or 4206#?

- **YES** — Continue to step 4.
- **NO** — This bulletin does NOT apply. Continue diagnosis using the applicable Repair Manual.

Figure 1.



4. Remove the electric vehicle charger sub-assembly.

Refer to TIS, applicable model and model year Repair Manual:

- [2021](#) / [2022](#) / [2023](#) RAV4 Prime:
Engine/Hybrid System – Hybrid/Battery Control System – “Hybrid / Battery Control: Electric Vehicle Charger Assembly: Removal”

5. Install the NEW electric vehicle charger sub-assembly.

Refer to TIS, applicable model and model year Repair Manual:

- [2021 – 2023](#) RAV4 Prime:
Engine/Hybrid System – Hybrid/Battery Control System – “Hybrid / Battery Control: Electric Vehicle Charger Assembly: Installation”

6. Using Techstream, clear ANY DTCs and confirm the condition is no longer present.