



INSTRUCTION TO SERVICE

ITS-60681		March 27, 2023
SECTION:	580-WHEELCHAIR LIFT	
WRITTEN BY:	Mark Reitz	
SUBJECT:	Braun wheelchair lift landing block replacement.	
ISSUE:	If lift system hydraulic pressure is lost the wheel chair lift assembly can drop to the floor of the compartment. When the Deploy command is activated the lift will drag on the floor and tear out the existing landing block.	
SUMMARY:	Performing this procedure will replace the existing landing block with a new design landing block that eliminates the issue.	

ITS-60681

Ref. NHTSA Recall No.	Ref. Transport Canada Recall No.
Not Applicable	Not Applicable

THIS ITS DOCUMENT SHOULD BE RETAINED AND REFERRED TO FOR FUTURE MAINTENANCE UNTIL THE PARTS AND/OR SERVICE MANUAL IS UPDATED TO REFLECT WORK DONE AS A RESULT OF THIS DOCUMENT. ENSURE THAT THIS DOCUMENT IS AVAILABLE FOR PARTS AND MAINTENANCE STAFF GOING FORWARD.

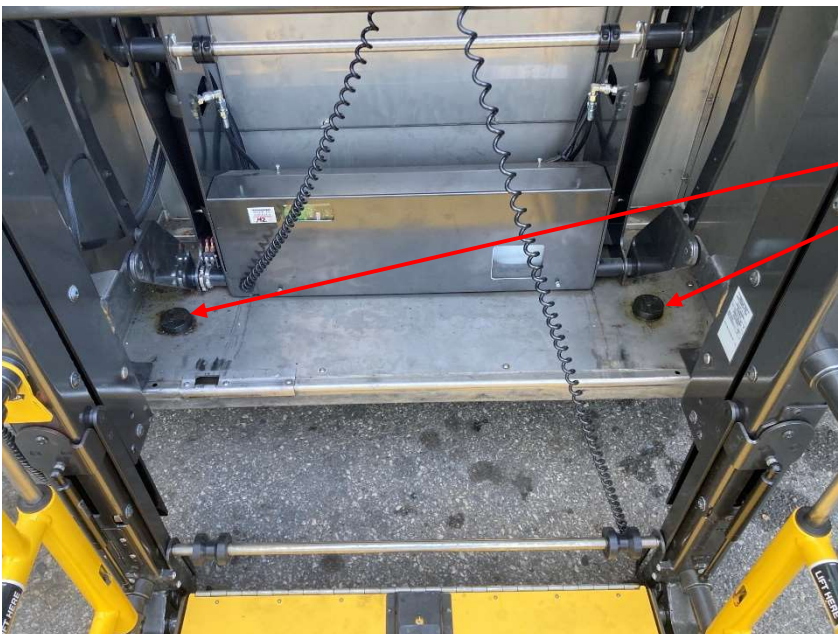
PROCEDURE:

1. Set park brake and chock wheels.
2. Turn the main battery disconnect switch to the "OFF" position.
3. Open the wheel chair lift compartment door and Deploy the lift to the ground.



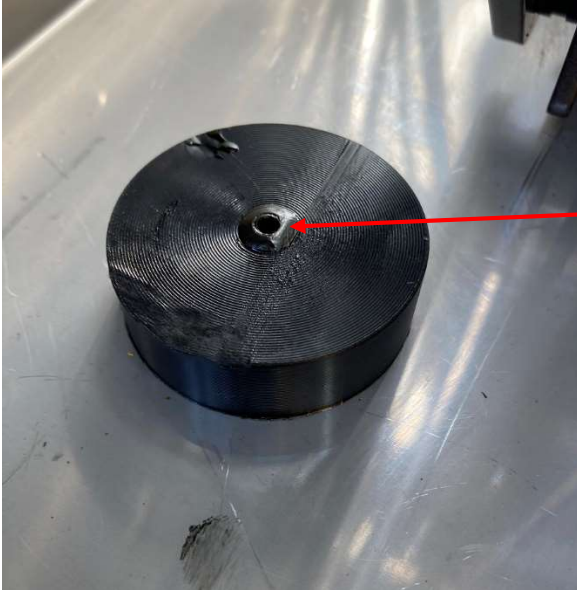
Open lift door
and Deploy the
lift

4. Locate the two original round landing blocks.



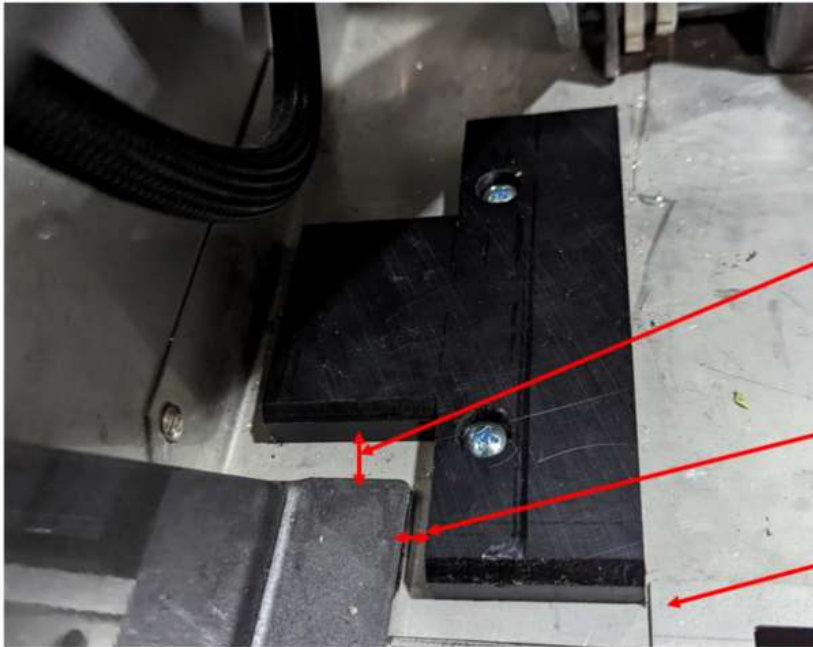
Round landing
blocks

5. Drill out the rivets holding the landing blocks in place. Discard the round landing blocks.



Drill out rivet
and discard
block

6. Place the new landing block PN 961465 on the floor, both sides, near the landing legs as shown below.

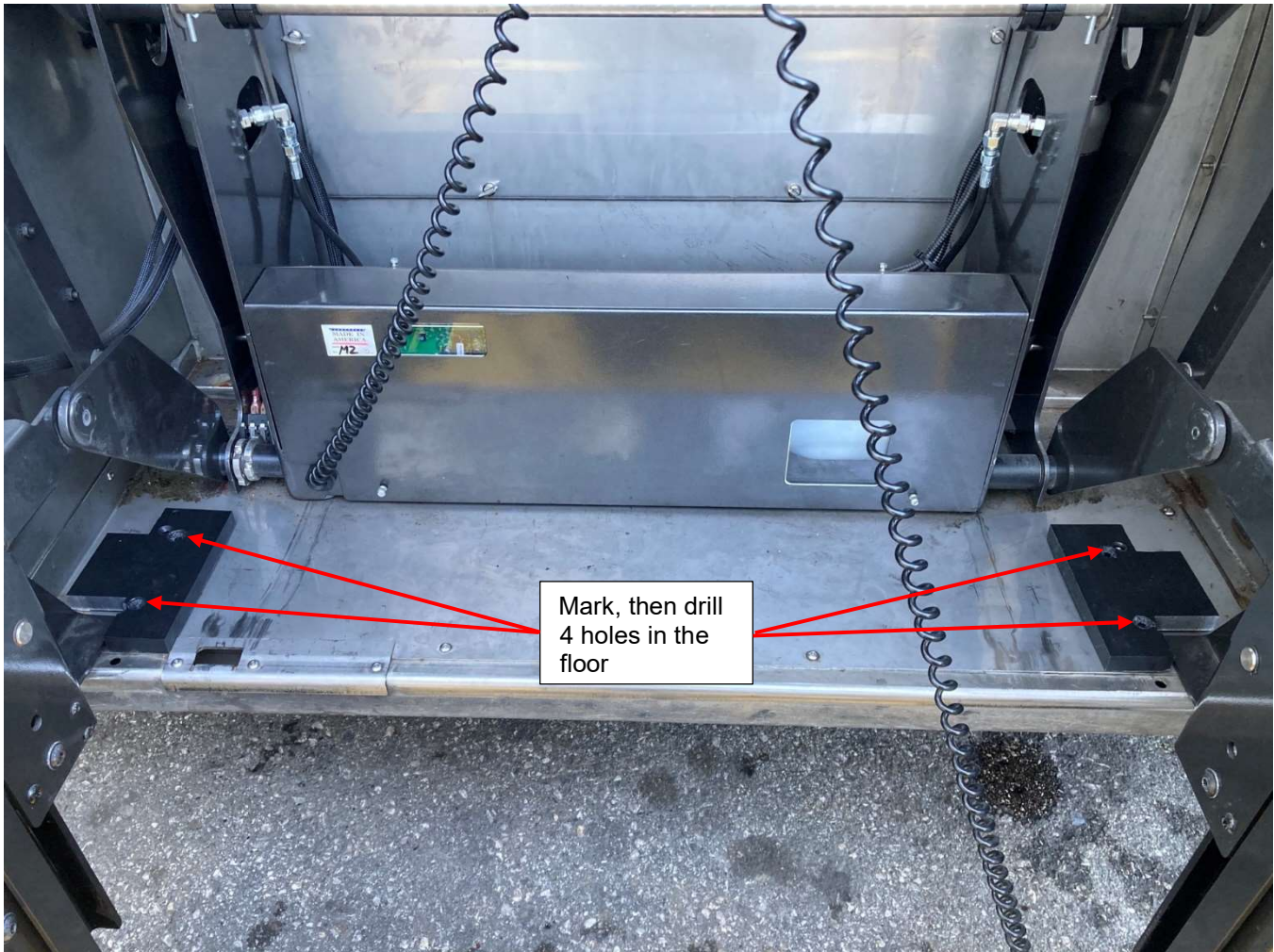


1/2 Inch gap here

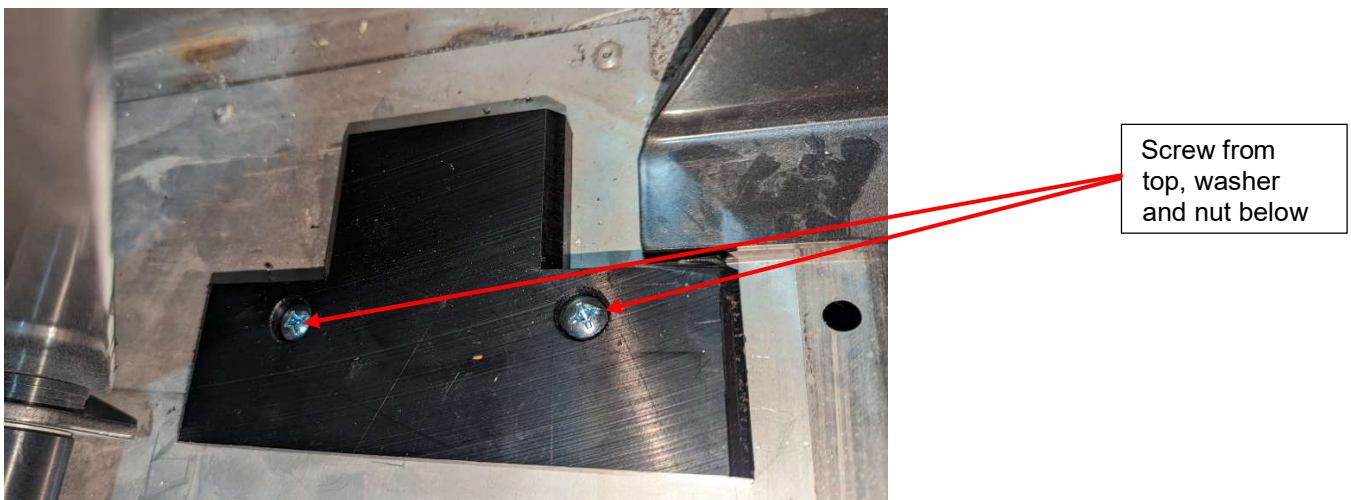
1/4 Inch gap here, but
don't go over the latch
plate.

Latch plate

7. Using the new landing block PN 961465 as a template mark the drill hole locations as shown in the picture below. Using a 17/64" bit drill 4 holes in the floor.



8. Install the landing blocks with screws PN 14S04016BK, washer PN 19-2-12, and locknut 19-01-0339.





- 9. Stow and deploy the lift 2 times. Make sure the landing legs do not drag on the landing block during the Stow motion. If there is interference, then trim or grind the landing block edge to obtain clearance.

LABOUR ESTIMATE				
	Operation	Number of Technician(s)	Hours	Labor Time T X HR
1	Replace wheel chair lift landing blocks	1	1	1

PARTS REQUIRED					
Item	Part Number	Description	Qty. per Coach	Units	Notes
1	961465	Landing block	2	EA	
2	14S04016BK	Screw-PH CR BLK 1/4 -20	4	EA	
3	19-2-23	Washer, Flat, SST 1/4	4	EA	
4	19-02-0339	Nut – 1/4 -20 Nylock, SST	4	EA	

SPECIAL TOOLS REQUIRED					
Item	Part Number	Description	Qty.	Units	Notes
1					