

 **HYUNDAI**
Technical Service Bulletin

GROUP CAMPAIGN	NUMBER 23-01-034H
DATE APRIL 2023	MODEL(S) Genesis Sedan (BH) Equus (VI) Genesis Coupe (BK)

SUBJECT: UNDERBODY CORROSION PREVENTATIVE SERVICE
(SERVICE CAMPAIGN 991)

★ IMPORTANT

Dealers must perform this service campaign on all affected vehicles prior to customer retail delivery and whenever an affected vehicle is in the shop for any maintenance or repair.

Access the "Vehicle Information" screen via WEBDCS to identify open Campaigns.

Description: In some areas, a vehicle's underbody may exhibit corrosion due to road salt usage. As a preventative measure, cavity wax coating is applied to the internal surfaces of underbody components, and an undercoating spray is applied to the bottom exterior surfaces of specified underbody components. This bulletin describes the procedure to perform this preventative service on certain Genesis Sedan (BH), Equus (VI), and Genesis Coupe (BK) vehicles.

STUI



This TSB includes STUI pictures as a requirement. Where indicated, please include the last 6 digits of the VIN and date of repair on a piece of paper. Ensure the VIN and date of repair are clearly visible. Finally, please ensure all captured pictures are completed according to the steps in this TSB and uploaded to STUI. All claims submitted that have illegible, incomplete, missing, or incorrect picture(s) are subject to debit.

Applicable Vehicles:

- Certain 2009-2014MY Genesis Sedan (BH) vehicles currently or ever registered in a Salt Belt State produced from 04/30/2008 – 02/24/2016.
- Certain 2011-2016MY Equus (VI) vehicles currently or ever registered in a Salt Belt State produced from 07/13/2010 – 12/03/2015.
- Certain 2010-2016MY Genesis Coupe (BK) vehicles currently or ever registered in a Salt Belt State produced from 12/18/2008 – 06/11/2016.

Salt Belt Areas include:

Connecticut, Delaware, Illinois, Indiana, Iowa, Kentucky, Maine, Maryland, Massachusetts, Michigan, Minnesota, Missouri, New Hampshire, New Jersey, New York, Ohio, Pennsylvania, Rhode Island, Vermont, Virginia, West Virginia, Wisconsin, and the District of Columbia.

Please note all dealers must perform this service campaign if vehicle comes in with an open campaign, even if vehicle is no longer located in the listed states above.

i Information

Allow the vehicle to cool at least four hours before performing the procedures in this TSB. Parking the vehicle at the stall overnight is highly recommended to avoid a need for a cool down period and improve work efficiency.

Circulate To: General Manager, Service Manager, Parts Manager, Warranty Manager, Service Advisors, Technicians, Body Shop Manager, Fleet Repair

Table of Contents

Parts Information:.....2
Recommended Tools and Equipment:.....4
Warranty Information:.....4
Service Procedures:.....5
 Wax Gun Preparation:5
 Remove Debris:7
 Vehicle Preparation:10
 Applying Cavity Wax:.....11
 Applying Undercoating:.....13

*** IMPORTANT**

There are circumstances under which vehicles that are not currently registered or have never been registered in a “salt belt” state may be eligible for this service campaign. These circumstances include:




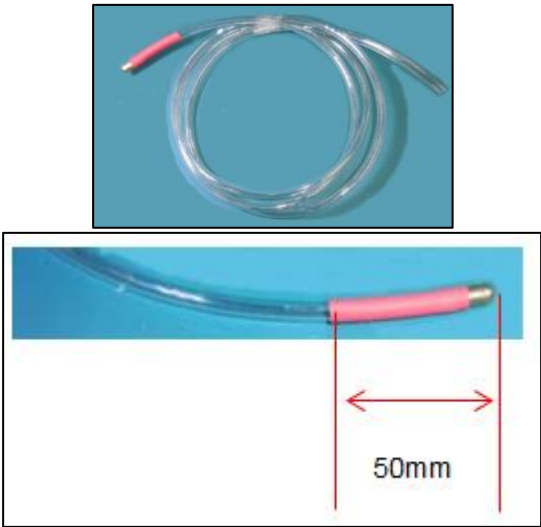
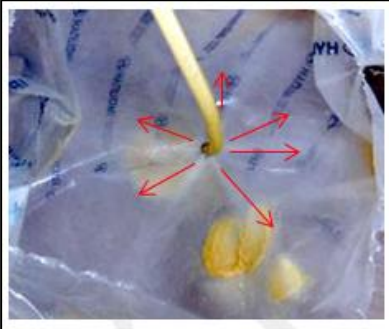

- Vehicles that were relocated into a “salt belt” area and/or
- Vehicles registered in a “non-salt belt” state and driven in a “salt belt” area

If it is determined that an owner of a vehicle within the affected VIN production date range relocates or has operated their vehicle in a “salt belt” area, the dealer should perform this procedure at no cost to the customer. **The dealer must submit a Prior Approval request before starting repairs.**








Parts Information:

! DANGER

- **This procedure must be performed in a well-ventilated area.**
- **Must wear safety goggles, face protection, and gloves. Rinse eyes with water or skin with soap and water. Do not inhale spray. Seek medical attention if needed.**
- **Flammable & pressurized. Do not spray near flames, sparks, or heated areas. Do not pierce can.**

Part Name	Image / Part Number	Remark
Cavity Wax	 00232-19034	Use about half a can per vehicle.
Undercoat Spray	 00232-19035	Use about 1 can per vehicle.
Wax Spray Gun	 00232-19036	Set air pressure to <u>70 psi</u> . <i>If wax output is slow</i> , prime the gun by blocking the nozzle with a rag, and spraying the gun until the flow of wax increases.
"Inside" Nozzle	 09624-2H101-QQH	This is a newly developed nozzle that has an improved wax application spray pattern.  The pink tubing is to signal the user to stop spraying when pulling the nozzle out. <u>This nozzle must be used for this service procedure.</u>
"Outside" Nozzle		This nozzle is supplied with the wax gun.

Recommended Tools and Equipment:

Tool Name	Image	Remark
Air Nozzle		
Goggles		
Mask		
Rubber/Plastic Mallet		
Wire Brush		
Plastic bags		Bags large enough to cover wheel/tire assemblies.
Tape		

Warranty Information:

Model	Op Code	Description	Op Time	Causal Part	Nature	Cause
Genesis Sedan (BH)	30D031R0	UNDER BODY RUST INSPECTION AND PREVENTIVE SERVICE	1.1	62410-3M102	A12	ZZ6
Equus (VI)	30D031R1			62410-3N163		
Genesis Coupe (BK)	30D031R2			62410-2M111		

NOTE 1: Submit Claim on Campaign Claim Entry Screen.

NOTE 2: Each labor operation will reimburse 1 can of undercoat spray and cavity wax.

NOTE 3: If a part that is not covered by this campaign is found in need of replacement while performing the service campaign and the affected part is still under warranty, submit a separate claim using the same repair order. If the affected part is out of warranty, submit a Prior Approval request for goodwill consideration prior to the repair.

NOTE 4: All claims must have STUI pictures uploaded as directed on page 17 of the TSB. **Claims with illegible, incomplete, missing, or incorrect STUI pictures are subject to debit.**

Service Procedures:

Wax Gun Preparation:

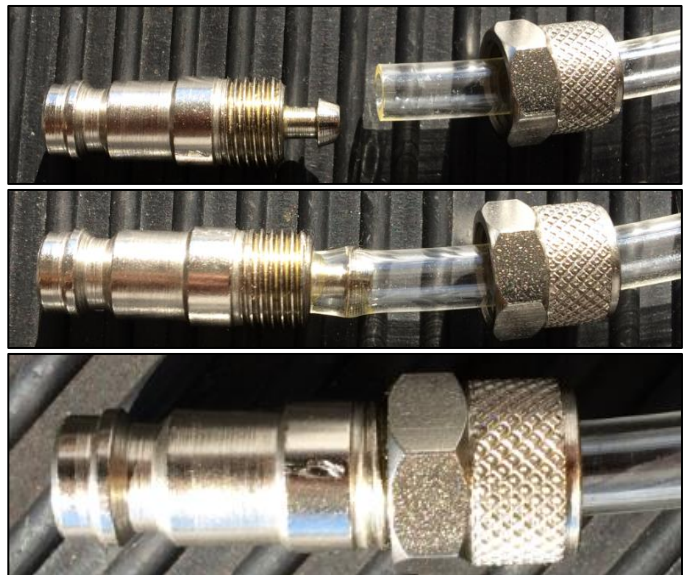
! DANGER

- This procedure must be performed in a well-ventilated area.
- Must wear safety goggles, face protection, and gloves. Rinse eyes with water or skin with soap and water. Do not inhale spray. Seek medical attention if needed.
- Flammable & pressurized. Do not spray near flames, sparks, or heated areas. Do not pierce can.

1. Unscrew the nut to remove the compression fitting from the nozzle assembly that originally comes with the wax gun.



2. Attach the compression fitting to the tubing on the new nozzle assembly.



3. Fill wax gun reservoir with cavity wax.

Prime the wax gun by spraying the wax into a trash bag (or similar) until a light mist is visibly coming out of the nozzle.

***i* Information**

Set air supply pressure to 70 psi.

Prime the wax spray gun to increase the flow when the mist is no longer visible.

To optimize the priming process, cover the nozzle with a rag and spray until the flow has increased.



Remove Debris:

! WARNING

Must wear safety goggles and a face mask during this procedure to protect eyes and prevent debris from being inhaled.

1. Lift the vehicle on a hoist.

Apply a plastic vinyl sheet on the floor.

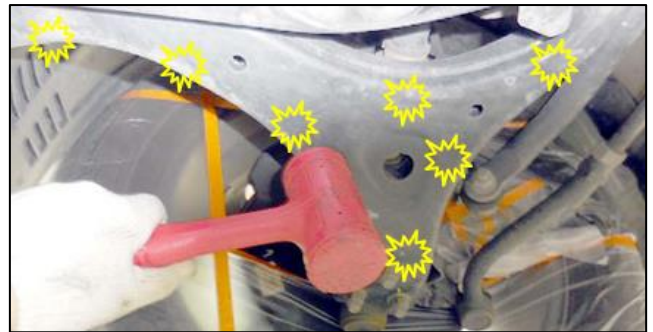
If equipped, remove plastic undercovers to gain access to the front sub-frame, brake, and fuel tubes.



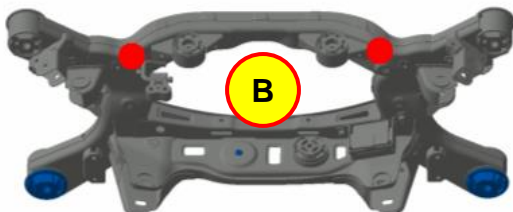
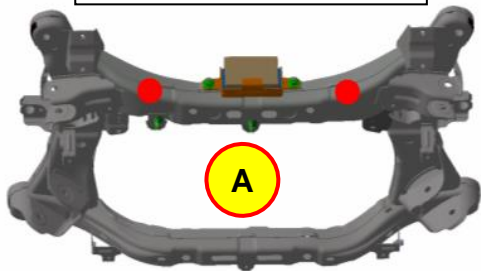
2. Lightly tap the vehicle underbody components with a rubber or plastic mallet to loosen and remove debris.

Underbody

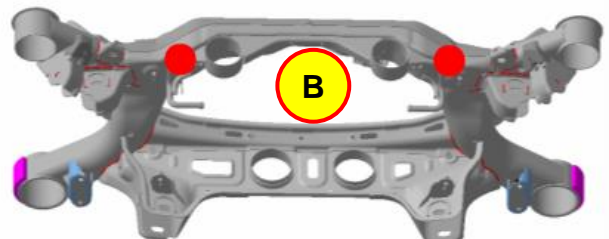
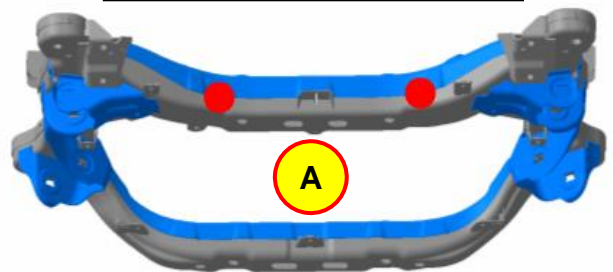
- Front sub-frame (A)
- Rear sub-frame (B)
- Rear lower arms (C)
- Rear upper arms (D) (BK model)

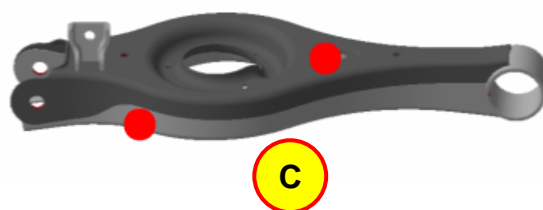
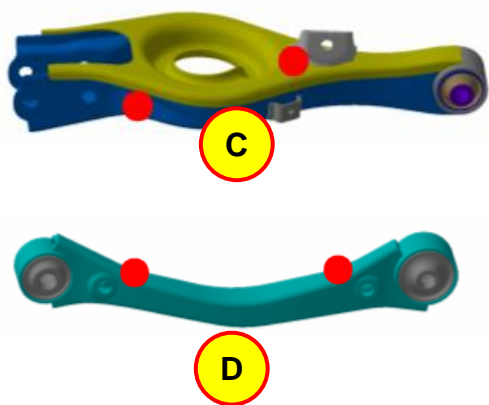


Genesis Coupe (BK)



Genesis (BH), Equus (VI)

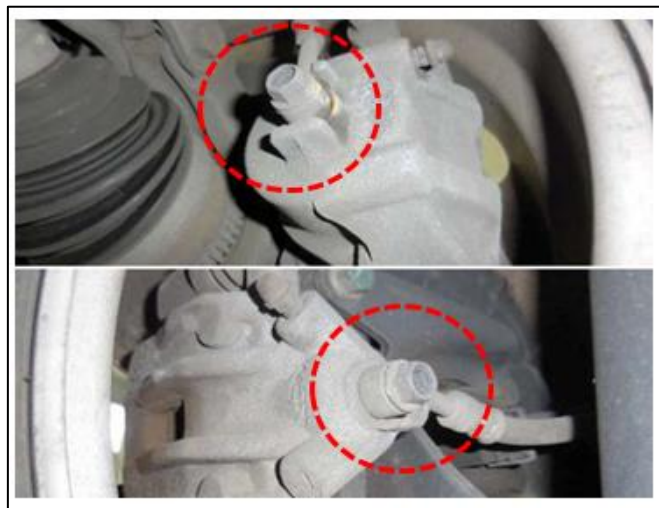
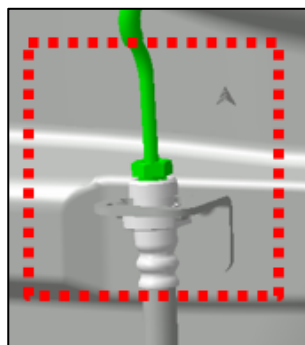




- 3. Use a wire brush to remove debris from the front sub-frame, rear sub-frame, rear upper arms, and rear lower arms.



- 4. Clean the brake banjo bolt surfaces at all four calipers and brake tube fasteners using a wire brush.

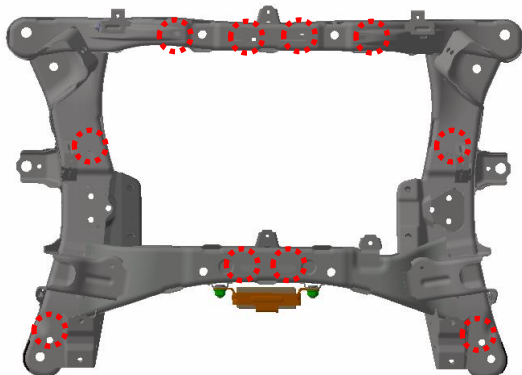


5. Remove the remaining debris by inserting an air nozzle into the interior cavity of the subframes and control arms. Then blow air in multiple directions.

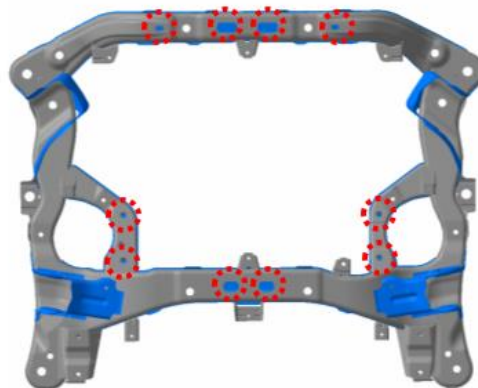
Use the marked areas as a guideline to insert the nozzle. Additional access might be possible to remove more debris.

- Front sub-frame

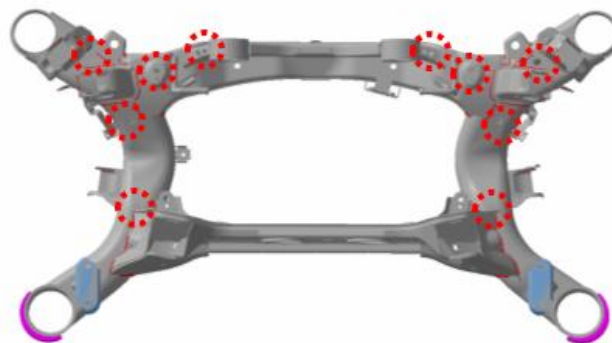
Genesis Coupe (BK)



Genesis (BH), Equus (VI)



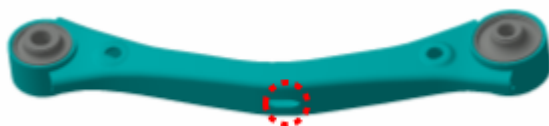
- Rear sub-frame



- Rear lower arms



- Rear upper arms (BK model)



Vehicle Preparation:

1. Wrap the brake assemblies with plastic bags to protect them from overspray. Use tape to secure the plastic in place. Leave the banjo fitting area exposed, as shown.

⚠ CAUTION

- The brakes must be sufficiently cooled before it is wrapped.
- May cause burns and melt the plastic.



2. Wrap large plastic bags around the wheel/tire/brake assemblies to protect them from overspray. Use tape to secure the plastic in place.



3. Wrap the exhaust areas adjacent to the front and rear sub-frames with plastic bags to protect them from overspray. Use tape to secure the plastic in place.

⚠ CAUTION

- The exhaust must be sufficiently cooled before it is wrapped.
- May cause burns and melt the plastic.

Applying Cavity Wax:

! DANGER

- This procedure must be performed in a well-ventilated area.
- Must wear safety goggles, face protection, and gloves. Rinse eyes with water or skin with soap and water. Do not inhale spray. Seek medical attention if needed.
- Flammable & pressurized. Do not spray near flames, sparks, or heated areas. Do not pierce can.

Apply the cavity wax at each of the locations noted in the following steps.

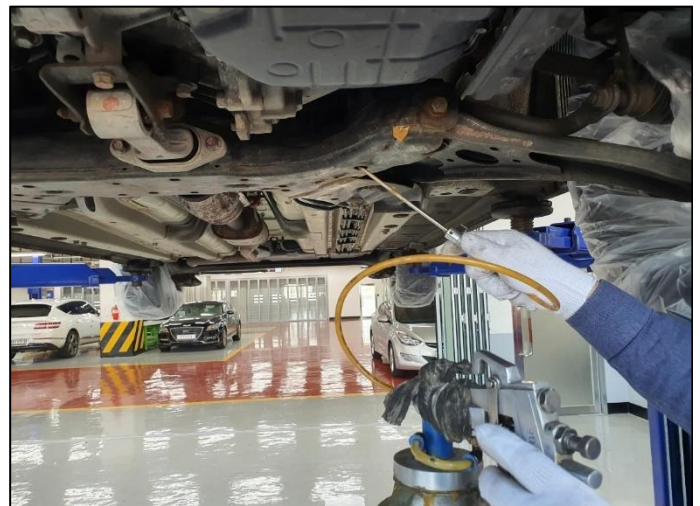
Generally for coating interior surfaces, insert the “inside” nozzle as deeply as possible at each point of entry. Spray the cavity wax while simultaneously rotating the nozzle, and slowly pulling the nozzle out. Continue this rotating/pulling motion until the pink tubing is seen coming out of the hole. The pink tubing indicates there is about 50mm of tubing left until the end of the nozzle. Stop spraying when the pink tubing is seen.

Generally for coating exterior surfaces, use the “outside” nozzle, provided with the wax gun. Use this nozzle if the inside nozzle is too large to access the internal cavity of the components.

1. Use the marked areas as a guideline to insert the cavity wax nozzle. Additional access into the internal cavity of the components might be possible.

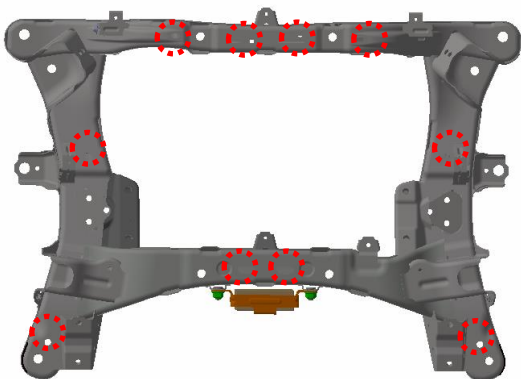
i Information

Wipe the excess wax off the exterior surfaces of the components.

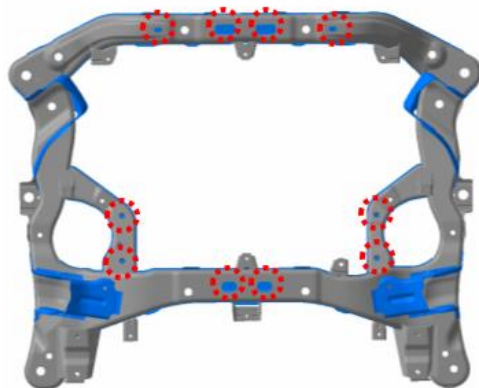


- Front sub-frame

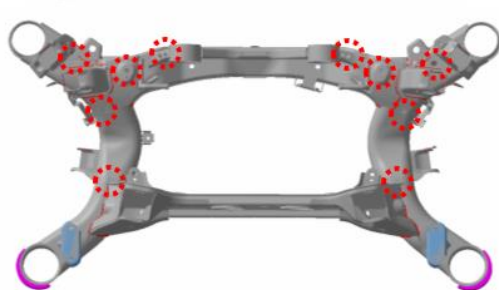
Genesis Coupe (BK)



Genesis (BH), Equus (VI)



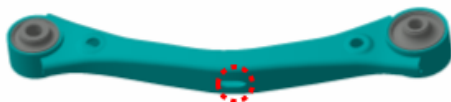
- Rear sub-frame



- Rear lower arms



- Rear upper arms (BK model)



Applying Undercoating:

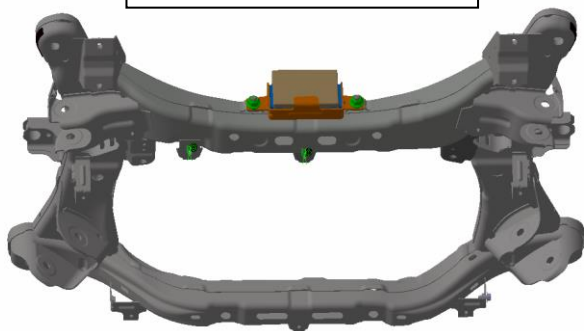
! DANGER

- This procedure must be performed in a well-ventilated area.
- Must wear safety goggles, face protection, and gloves. Rinse eyes with water or skin with soap and water. Do not inhale spray. Seek medical attention if needed.
- Flammable & pressurized. Do not spray near flames, sparks, or heated areas. Do not pierce can.

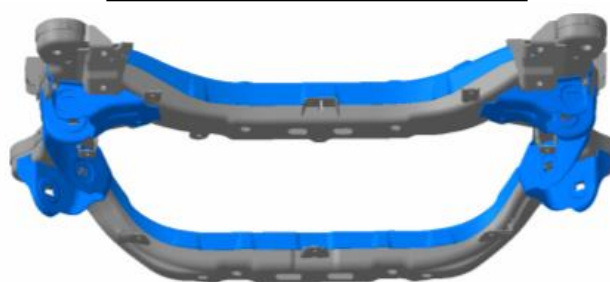
Spray the black undercoating on all exterior surfaces of the front and rear sub-frames, rear lower arms, front and rear brake caliper banjos, brake tube brackets, and the fuel & brake tubes. Refer to the following images.

1. - Front sub-frame

Genesis Coupe (BK)



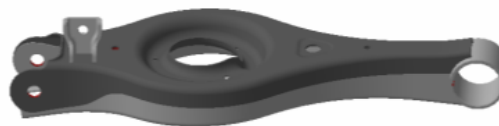
Genesis (BH), Equus (VI)



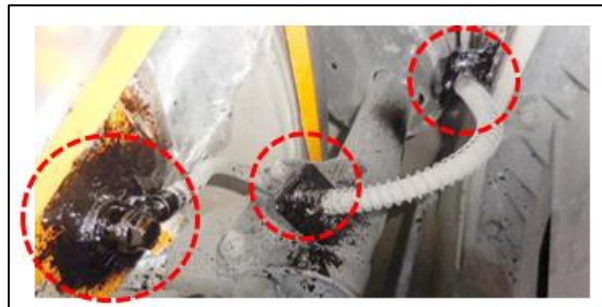
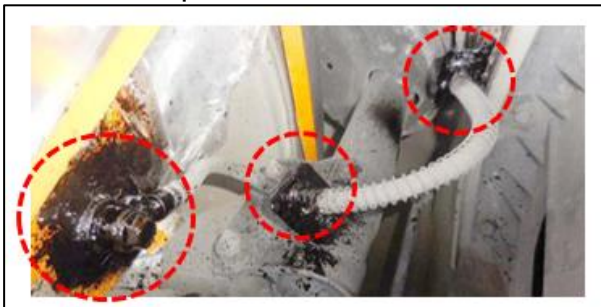
- Rear sub-frame



- Rear lower arms



- Brake banjo and brackets at each wheel position



- Rear upper arms (BK model)

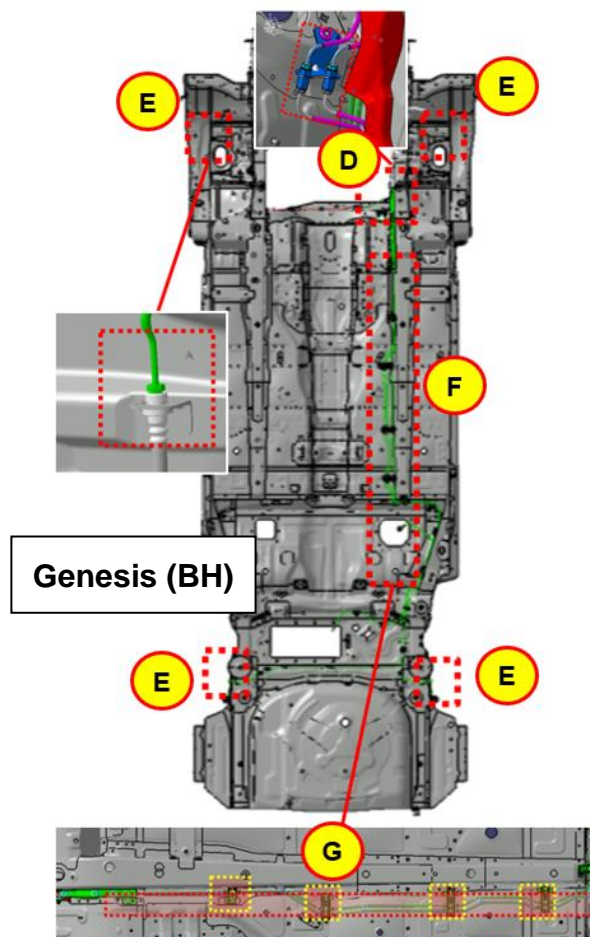
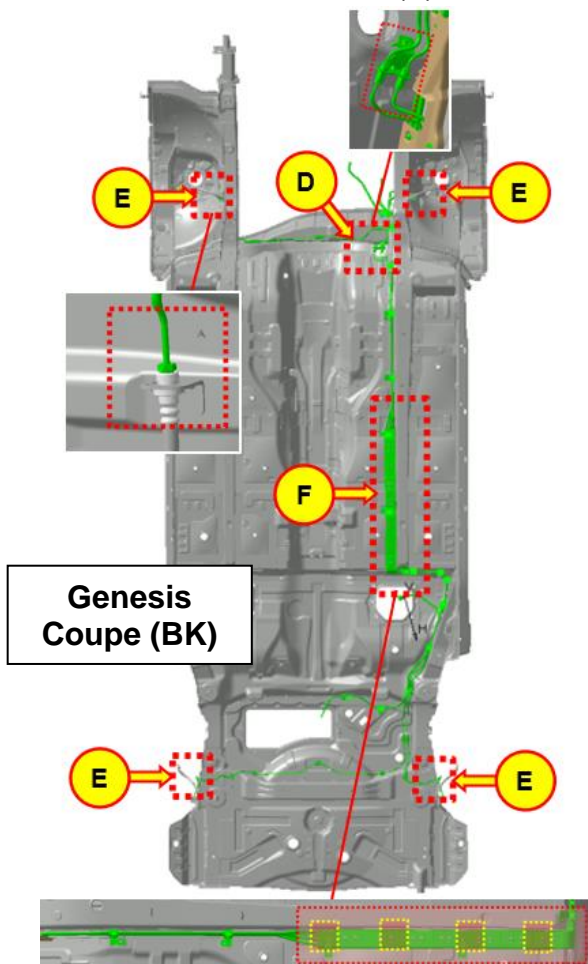


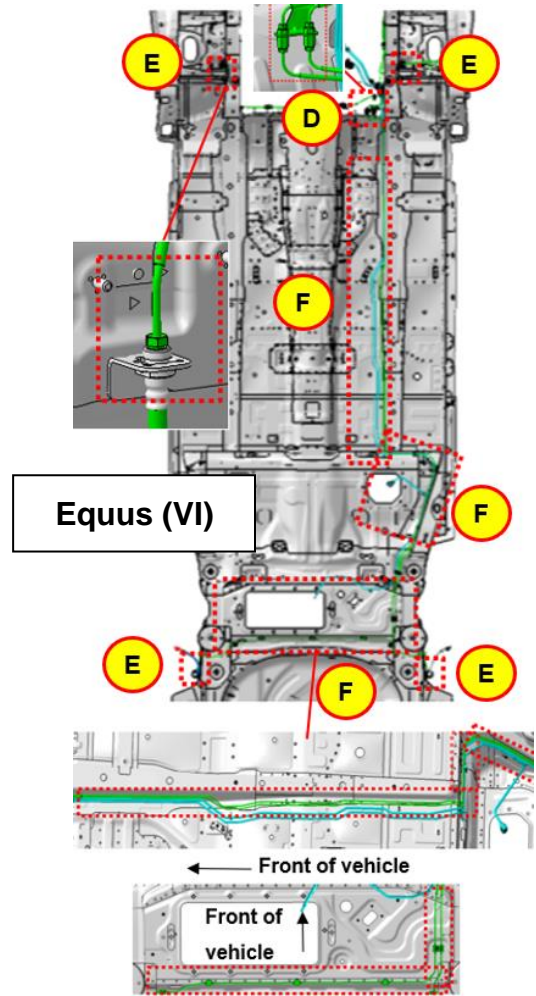
2. Additional brake and fuel tube brackets and connectors:

- Brake tube 2-way connector (D)
- Brake tube mounts (E)
- Rear brake and fuel tubes within the areas marked in red (F)

i Information

Spray undercoating into the areas marked in the yellow boxes (G).





3. Remove all the plastic bags.

4.

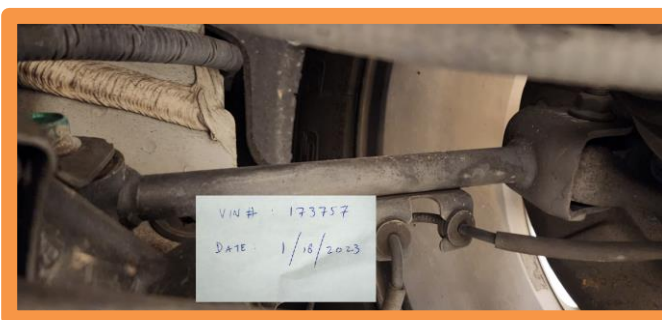
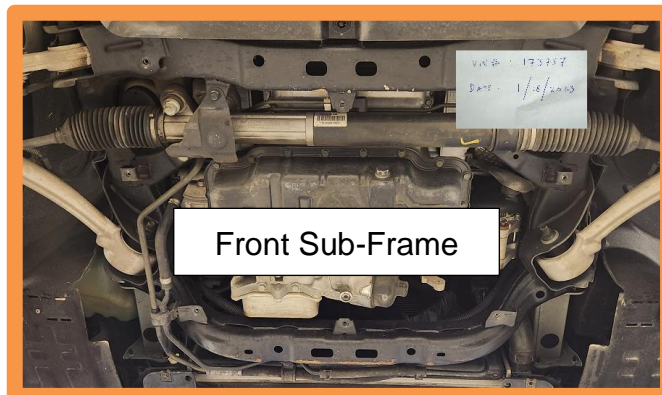
STUI



Using STUI, take clear photos of the following components after the undercoating is applied with the last 6 digits of the VIN and the date of repair on a piece of paper. See examples shown to the right.

1. Front sub-frame
2. Rear sub-frame
3. Left rear lower control arm
4. Right rear lower control arm
5. Left rear upper control arm (BK only)
6. Right rear upper control arm (BK only)

Upload all photos to STUI.



5. Reinstall the parts in the reverse order of removal.
6. The procedure is now complete.