

# Water Entry From One or More Roof Rail Garnish Clips

**Service Category** Vehicle Exterior

**Market** USA and  
Mexico

**Section** Exterior Panels/Trim

Toyota Supports  
ASE Certification 

---

## Applicability

YEAR(S)	MODEL(S)	ADDITIONAL INFORMATION
2021	RAV4 Prime	
2019 - 2021	RAV4, RAV4 HV	

## Introduction

Some 2019 – 2021 model year RAV4 and RAV4 Hybrid and 2021 model year RAV4 Prime vehicles may exhibit water entry from one or more roof rail garnish clips. Follow the procedures in this bulletin to address this condition.

## Water Entry From One or More Roof Rail Garnish Clips

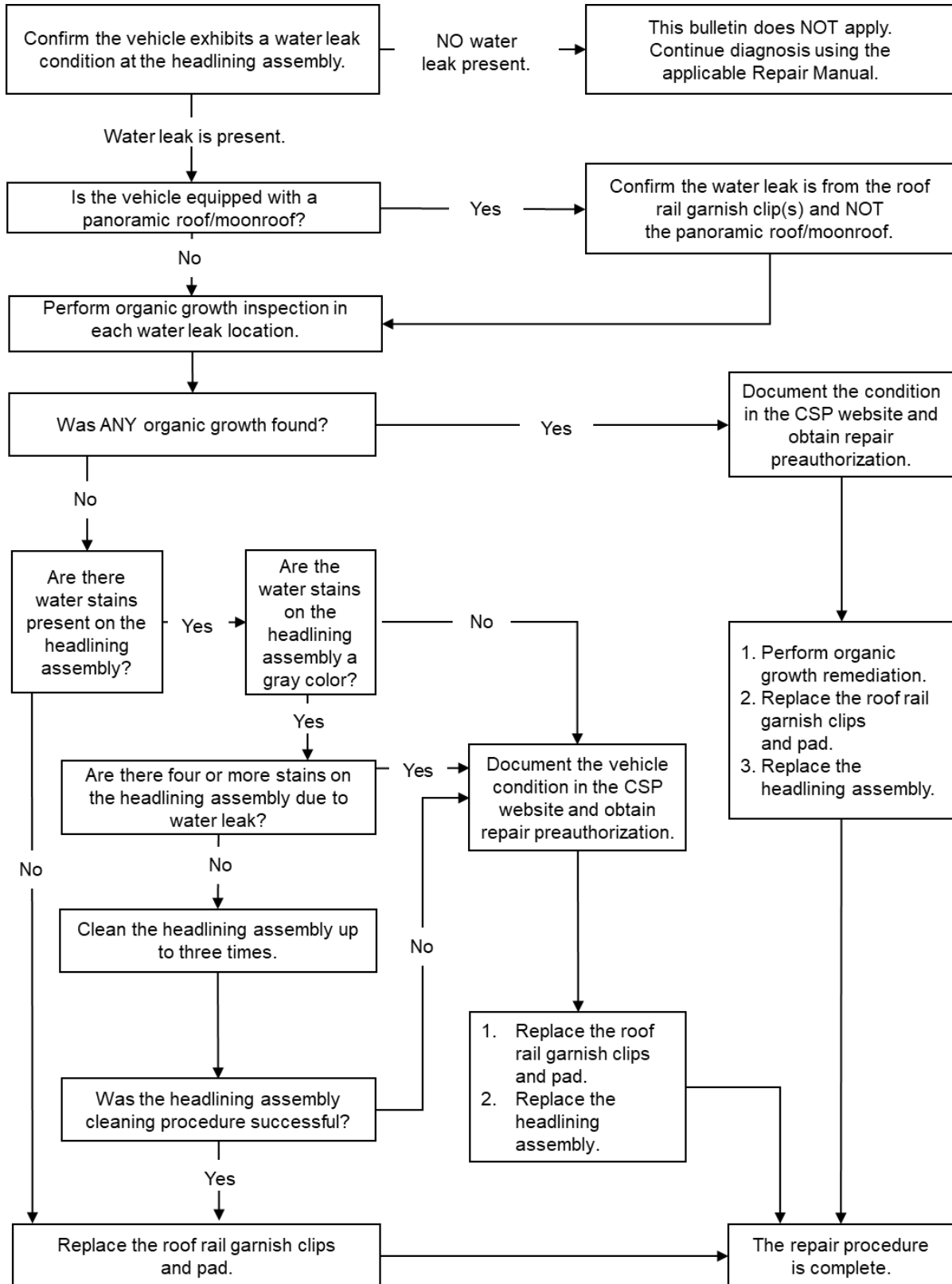
---

### Table of Contents

- [Flowchart](#) ..... 3
- [Production Change Information](#) ..... 4
- [Warranty Information](#) ..... 8
  - [For USA and Mexico Markets](#) ..... 8
- [Parts Information](#) ..... 9
  - [For USA and Mexico Markets](#) ..... 9
- [Required Tools & Equipment](#) ..... 9
- [Inspection Procedure](#) ..... 10
- [Organic Growth Inspection Procedure](#) ..... 16
- [Headlining Assembly Inspection Procedure](#) ..... 17
- [Headlining Assembly Cleaning Procedure](#) ..... 19
- [CSP Inspection Website Submission Procedure](#) ..... 21
- [Roof Rail Garnish Clips and Pad Replacement Procedure](#) ..... 22
- [Headlining Assembly Replacement Procedure](#) ..... 23

## Water Entry From One or More Roof Rail Garnish Clips

**Flowchart**



## Water Entry From One or More Roof Rail Garnish Clips

### Production Change Information

This bulletin applies to vehicles produced **UNTIL** the Effective VINs shown below.

MODEL	PLANT	PRODUCTION CHANGE EFFECTIVE VIN
RAV4	TICO No. 1	JTMJ13FV#LD068911 JTMJ1RFV#MD073084 JTMN1RFV#MD073921 JTMY1RFV#MD067404 JTMA1RFV#MD073534 JTMB1RFV#KD002021 JTMC1RFV#MD066847 JTMD1RFV#KD002009 JTMF1RFV#MD073522 JTMG1RFV#MD073480 JTMH1RFV#MD066846 JTMJ1RFV#MD072430 JTMK1RFV#MD066833 JTMN1RFV#MD073533 JTMP1RFV#MD073537 JTMR13FV#LD068907 JTMR1RFV#KD002022 JTMW1RFV#MD066844 JTMY1RFV#MD066799 JTMZ13FV#LD058634 JTMZ1RFV#KD002003
	TICO No. 2	JTMD1RFV#KD500007 JTMN1RFV#MD532039 JTMY1RFV#MD523070 JTMA1RFV#MD531991 JTMC1RFV#MD523040 JTMF1RFV#MD531993 JTMG1RFV#MD531994 JTMH1RFV#MD523042 JTMK1RFV#MD523043 JTMN1RFV#MD531992 JTMP1RFV#MD531997 JTMW1RFV#MD523048 JTMY1RFV#MD523044

## Water Entry From One or More Roof Rail Garnish Clips

---

Production Change Information (continued)

MODEL	PLANT	PRODUCTION CHANGE EFFECTIVE VIN	
RAV4	Takaoka	JTMD13FV#LJ038412 JTMJ13FV#LJ038894 JTMJ1RFV#MJ040121 JTMN1RFV#MJ040091 JTMJ1RFV#MJ022753 JTMA1RFV#MJ040118 JTMC1RFV#MJ022803 JTMF1RFV#KJ025558 JTMG1RFV#KJ025563 JTMH1RFV#KJ016967 JTMJ1RFV#MJ040122 JTMK1RFV#KJ016966 JTMN1RFV#MJ040006 JTMP1RFV#MJ040120 JTMR13FV#LJ038904 JTMW1RFV#MJ022809 JTMJ1RFV#MJ022793 JTMZ13FV#KJ016880	
		TMMC West	2T3A1RFV#MW225052 2T3B1RFV#MW225015 2T3C1RFV#MW167749 2T3D1RFV#MW224874 2T3F1RFV#MW225049 2T3G1RFV#MW225045 2T3H1RFV#MW167755 2T3J1RFV#MW229570 2T3K1RFV#MW167756 2T3N1RFV#MW225032 2T3P1RFV#MW225055 2T3R1RFV#MW225056 2T3S1RFV#MW229562 2T3W1RFV#MW167758 2T3Y1RFV#MW167713 2T3Z1RFV#MW167692

## Water Entry From One or More Roof Rail Garnish Clips

Production Change Information (continued)

MODEL	PLANT	PRODUCTION CHANGE EFFECTIVE VIN
RAV4	TMMC North	2T3A1RFV#MC232946 2T3B1RFV#MC232951 2T3C1RFV#MC156938 2T3D1RFV#MC232678 2T3F1RFV#MC232943 2T3G1RFV#MC232959 2T3H1RFV#MC156934 2T3J1RFV#LC140921 2T3K1RFV#MC156950 2T3N1RFV#MC232932 2T3P1RFV#MC232958 2T3R1RFV#MC232941 2T3W1RFV#MC156949 2T3Y1RFV#MC156908 2T3Z1RFV#MC156930
RAV4 HV	TICO No. 1	JTMD6RFV#MD014202 JTM Y23FV#LD061072 JTMB6RFV#MD013634 JTMBWRFV#KD002007 JTMD6RFV#MD013623 JTMDWRFV#LD073244 JTML6RFV#MD013592 JTMLWRFV#LD073356 JTMM6RFV#MD013605 JTMMWRFV#LD073405 JTMR6RFV#MD013619 JTMRWRFV#LD073417 JTM Y23FV#KD002008
	TICO No. 2	JTMD6RFV#MD508174 JTMDWRFV#LD551352 JTME6RFV#MD508200 JTMEWRFV#LD551353 JTMB6RFV#MD507966 JTMD6RFV#MD507947 JTMDWRFV#LD551199

## Water Entry From One or More Roof Rail Garnish Clips

Production Change Information (continued)

MODEL	PLANT	PRODUCTION CHANGE EFFECTIVE VIN
RAV4 HV	TICO No. 2	JTME6RFV#MD507827 JTMEWRFV#LD545590 JTML6RFV#MD507828 JTMLWRFV#LD551314 JTMM6RFV#MD507968 JTMMWRFV#LD551354 JTMR6RFV#MD507964 JTMRWRFV#LD551358
	Takaoka	JTMD6RFV#MJ003207 JTMDWRFV#LJ048050 JTME6RFV#MJ003449 JTMEWRFV#LJ050079 JTMRWRFV#KJ001016 JTMY23FV#LJ035993 JTMB6RFV#MJ003289 JTMD6RFV#MJ003164 JTMDWRFV#LJ050071 JTME6RFV#MJ003411 JTMEWRFV#LJ050080 JTMLWRFV#KJ026930 JTMMWRFV#KJ024654 JTMR6RFV#MJ003325 JTMRWRFV#LJ050248
	TMMK	4T3B6RFV#MU047239 4T3D6RFV#MU047228 4T3DWRFV#MU028366 4T3E6RFV#MU047210 4T3EWRFV#LU010841 4T3L6RFV#MU031844 4T3LWRFV#MU028368 4T3M6RFV#MU031808 4T3MWRFV#MU028342 4T3R6RFV#MU031870 4T3RWRFV#MU028376

## Water Entry From One or More Roof Rail Garnish Clips

---

**Production Change Information (continued)**

MODEL	PLANT	PRODUCTION CHANGE EFFECTIVE VIN
RAV4 HV	TMMC West	2T3B6RFV#MW026800 2T3BWRFV#MW124035 2T3D6RFV#MW026793 2T3DWRFV#MW124030 2T3E6RFV#MW026799 2T3EWRFV#LW099807 2T3L6RFV#MW019754 2T3LWRFV#MW122478 2T3M6RFV#MW019642 2T3MWRFV#MW123854 2T3R6RFV#MW019752 2T3RWRFV#MW124036
RAV4 Prime	TICO No. 2	JTMFB3FV#MD009582 JTMGB3FV#MD009588 JTMAB3FV#MD009258 JTMCB3FV#MD009239 JTMEB3FV#MD009238 JTMGB3FV#MD009241

**Warranty Information**

For USA and Mexico Markets

**APPLICABLE WARRANTY**  
 Refer to campaign publication [22TE05](#) for warranty applicability and claim filling instructions.



## Water Entry From One or More Roof Rail Garnish Clips

---

### Parts Information

For USA and Mexico Markets

**Table 1. For Vehicles Equipped With Normal Roof Rails**

PART NUMBER	PART NAME	QTY
04002-1810R	Pad, Roof Side Rail Garnish Kit	1
04002-1610R	Retainer, Roof Rack, FR Kit	1
04002-1410R	Clip	1

**Table 2. For Vehicles Equipped With Panoramic Roof Rails**

PART NUMBER	PART NAME	QTY
04002-1810R	Pad, Roof Side Rail Garnish Kit	1
04002-1420R	Retainer, Roof Rack, FR Kit	1

**Table 3. For Vehicles Equipped With Off-road Roof Rails**

PART NUMBER	PART NAME	QTY
PT278-422FP-RH	RAV Pad Roof Side Rail Garnish RT	1
PT278-422FP-LH	RAV Pad Roof Side Rail Garnish LT	1
04002-1610R	Retainer, Roof Rack, FR Kit	1
04002-1410R	Clip	1
63437-0E070	Seal, Roof Carrier, No. 2	8

### Required Tools & Equipment

REQUIRED TOOLS & MATERIAL	QTY
Microfiber Towel*	1
Zep® Foaming Glass Cleaner*	1
Portable Lighting*	1
Compressed Air With Nozzle*	1

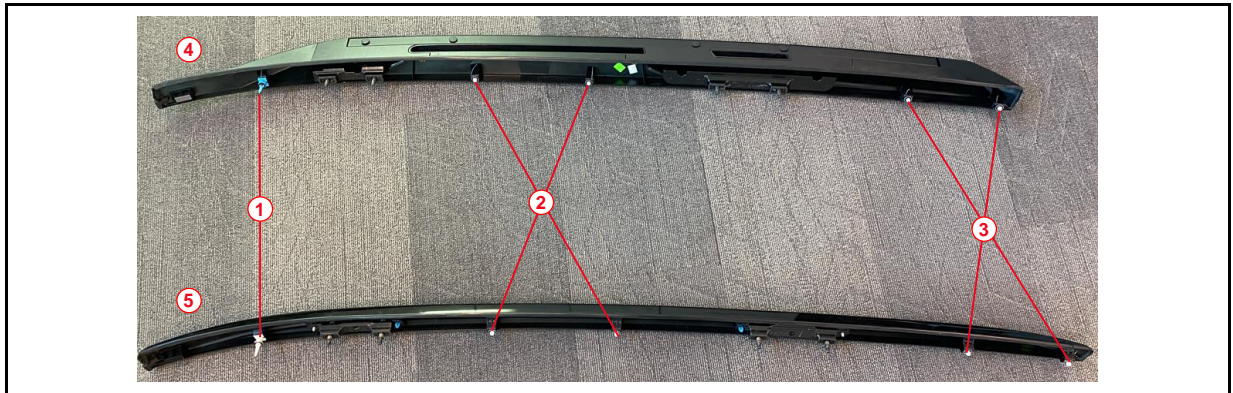
\*Required for headlining assembly cleaning ONLY.

## Water Entry From One or More Roof Rail Garnish Clips

### Inspection Procedure

1. Check the A, B, and C pillar areas to confirm there are indications of water entry present on the headlining assembly by checking for water and/or water stains.

**Figure 1. Clip Position Reference**



<b>1</b>	Front Clip
<b>2</b>	Middle Clip
<b>3</b>	Rear Clip
<b>4</b>	Off-road Roof Rail
<b>5</b>	Normal/Panoramic Roof Rail

**Figure 2.**



<b>1</b>	Water Stain at A Pillar
<b>2</b>	Water at B Pillar
<b>3</b>	Water at C Pillar

Are there indications of water entry present on the vehicle headlining assembly?

- **YES** — Continue to step 2.
- **NO** — Go to step 4.

## Water Entry From One or More Roof Rail Garnish Clips

---

### Inspection Procedure (continued)

2. Is the vehicle equipped with a panoramic roof/moonroof?
  - **YES** — Continue to step 3.
  - **NO** — Go to the [Organic Growth Inspection Procedure](#) section.
  
3. Confirm the water leak is originating from one or multiple roof rail garnish clips and NOT from the panoramic roof/moonroof.
  - A. Refer to the video link below for an example of a roof rail garnish clip water leak.  
[Roof Rail Garnish Clip Water Leak](#)
  
  - B. Is the water leak originating from one or multiple roof rail garnish clips?
    - **YES** — Go to the [Organic Growth Inspection Procedure](#) section.
    - **NO** — This bulletin does NOT apply. Continue diagnosis using the applicable model year Repair Manual.

## Water Entry From One or More Roof Rail Garnish Clips

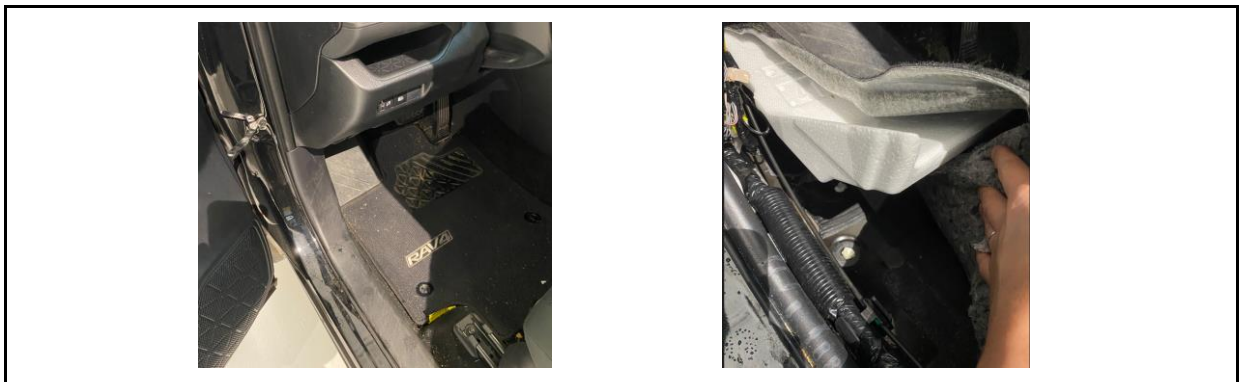
### Inspection Procedure (continued)

- If signs of water leak are NOT shown on the headliner, but the customer is stating concerns of a roof rail water leak, check the customer complaint areas as instructed below.

**NOTE**

- When checking the floorboard, ensure you lift ANY floor mats, the floormat backing may block the water from wicking into the carpet.
- You may need to lift carpet to find water in these areas.

**Figure 3. Front Floor Under A Pillar**



**Figure 4. Floor Under B Pillar**



**Figure 5. Rear Floor Under C Pillar**



## Water Entry From One or More Roof Rail Garnish Clips

---

### Inspection Procedure (continued)

5. Check the headlining assembly for water at the customer claim location.

A. Partially remove the weather strip to check the front clip location area.

**Figure 6.**



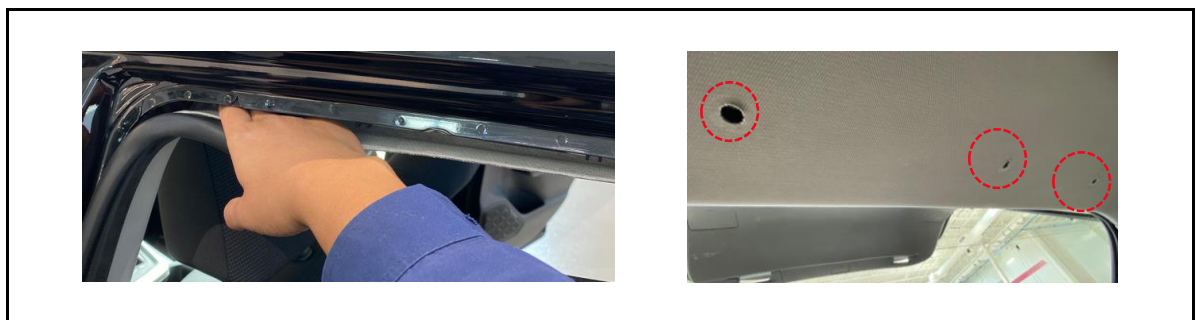
B. Partially remove the weather strip to check the middle clip location area.

**Figure 7.**



C. Remove the three ceiling clips to check the rear clip location area.

**Figure 8.**



## Water Entry From One or More Roof Rail Garnish Clips

---

### Inspection Procedure (continued)

6. Is there indication of water at the floorboard or on the headlining assembly after further inspection?
  - **YES** — Continue to step 7.
  - **NO** — Go to step 8.
  
7. Is the vehicle equipped with a panoramic roof/moonroof?
  - **YES** — Continue to step 8.
  - **NO** — Go to the [Organic Growth Inspection Procedure](#) section.
  
8. Complete a shower test.
  - A. Wipe off ANY water present.
  - B. Reassemble the vehicle.
  - C. Using tape, cover the panoramic roof/moonroof.
  - D. Complete a shower test.
  
9. After the shower test, recheck the headlining assembly and clip location(s) for water leak(s) in the area of customer complaint.
  - A. Partially remove the weather strip to check the front clip location area.

**Figure 9.**



## Water Entry From One or More Roof Rail Garnish Clips

---

### Inspection Procedure (continued)

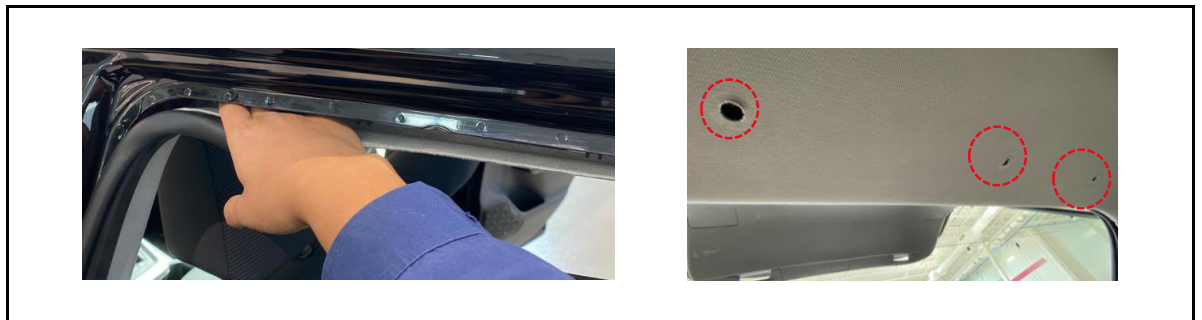
- B. Partially remove the weather strip to check the middle clip location area.

**Figure 10.**



- C. Remove the three ceiling clips to check the rear clip location area.

**Figure 11.**



Is there water present on the headlining assembly?

- **YES** — Continue to the [Organic Growth Inspection Procedure](#) section.
- **NO** — This bulletin does NOT apply. Continue diagnosis using the applicable model year Repair Manual.

## Water Entry From One or More Roof Rail Garnish Clips

### Organic Growth Inspection Procedure

1. Lift the necessary trim and carpet pieces to inspect for organic growth based on the location water entry was identified.
  - If there is water entry present at pillar A, check for organic growth on the front floor under A pillar.

**Figure 12. Front Floor Under A Pillar**



- If there is water entry present at pillar B, check for organic growth on floor under B pillar.

**Figure 13. Floor Under B Pillar**



- If there is water entry present at pillar C, check for organic growth on the rear floor under C pillar.

**Figure 14. Rear Floor Under C Pillar**





## Water Entry From One or More Roof Rail Garnish Clips

---

### Organic Growth Inspection Procedure (continued)

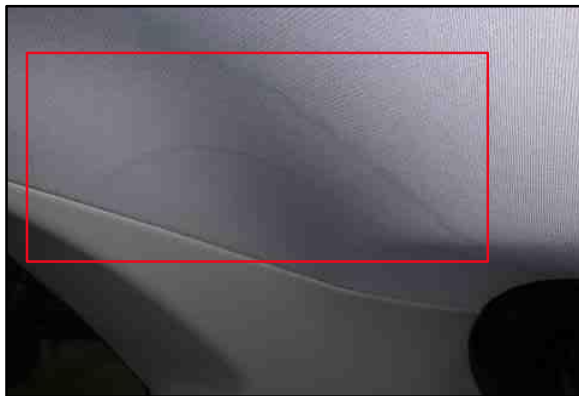
2. Is there organic growth present on the vehicle interior?
  - **YES** — Go to the [CSP Inspection Website Submission Procedure](#) section.
  - **NO** — Continue to step 3.
  
3. Are there additional parts that have been damaged from the water leak that cannot be dried?
  - **YES** — Go to the [CSP Inspection Website Submission Procedure](#) section.
  - **NO** — Continue to the [Headlining Assembly Inspection Procedure](#) section.

### Headlining Assembly Inspection Procedure

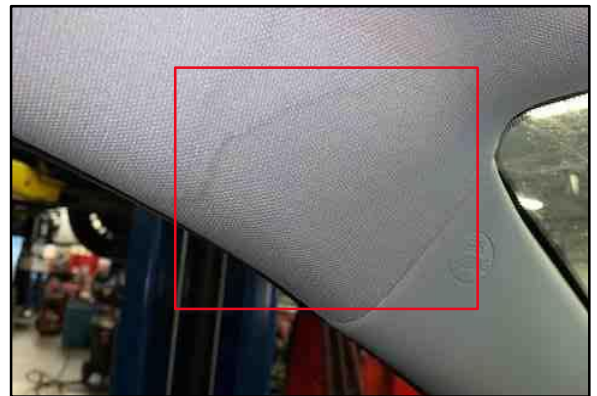
Inspect the vehicle headlining assembly as instructed to determine if it qualifies for cleaning.

1. Inspect the vehicle headlining assembly for water stains.  
Are there water stains present on the vehicle headlining assembly?

**Figure 15. Water Stain Example**



**Figure 16. Water Stain Example**



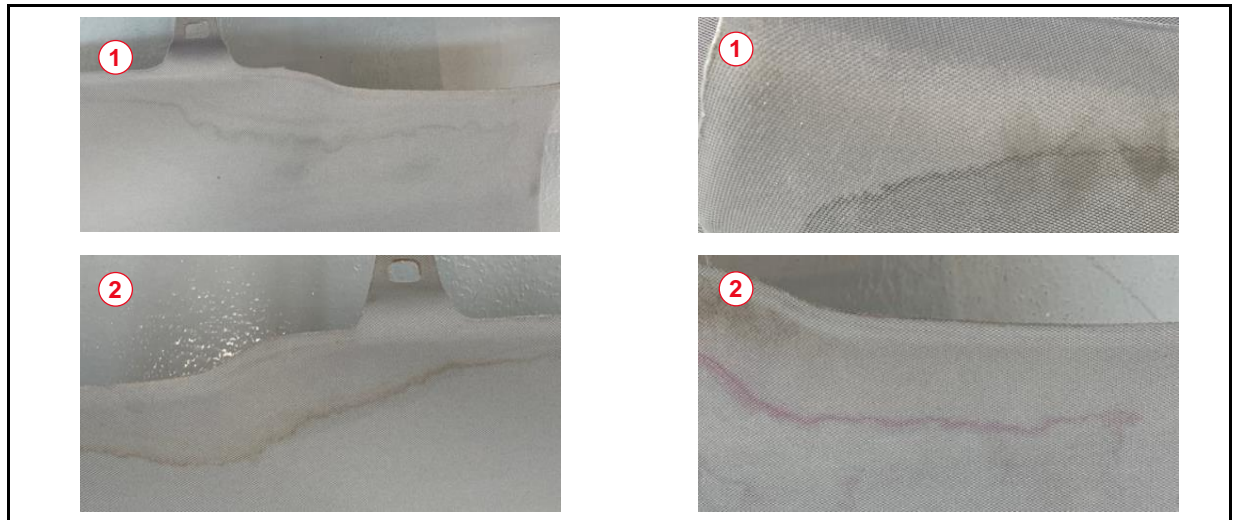
- **YES** — Continue to step 2.
  - **NO** — Go to the [Roof Rail Garnish Clips and Pad Replacement Procedures](#) section.
2. Take a photograph of EACH stain location with the Repair Order (RO) and VIN in the frame.

## Water Entry From One or More Roof Rail Garnish Clips

### Headlining Assembly Inspection Procedure (continued)

- Reference Figure 17 and determine the water stain color on the headlining assembly.

**Figure 17. Water Stain Color Examples**



<b>1</b>	Example of a Gray Color Stain
<b>2</b>	Example of a Different Color Stain

Are the water stain(s) a gray color?

- YES** — Continue to step 4.
- NO** — The headlining assembly will require replacement. Go to the [CSP Inspection Website Submission Procedures](#) section.

- Confirm the number of stains present.  
Are there four or more stains on the vehicle headlining assembly?

- YES** — The headlining assembly will require replacement. Go to the [CSP Inspection Website Submission Procedures](#) section.
- NO** — Continue to the [Headlining Assembly Cleaning Procedure](#) section.

**Figure 18. Example of Four Stains, One on Each Corner**



## Water Entry From One or More Roof Rail Garnish Clips

---

### Headlining Assembly Cleaning Procedure

In this Service Bulletin the headlining assembly is shown removed from the vehicle to demonstrate the headlining assembly cleaning. ALL RAV4 model vehicles can have the headlining assembly cleaned while it is installed on the vehicle. However, to repair the roof rail garnish clips on the Off-road Grade RAV4 model vehicles, the headlining assembly **MUST** be removed from the vehicle. In Off-road Grade RAV4 model vehicles it is acceptable to remove the headlining assembly for cleaning.

1. Refer to the video link below and clean the headlining assembly.

[Headlining Assembly Cleaning Video](#)

2. Take photographs of the stain(s).

**NOTE**

- Ensure you take photographs.
- Photographs are required **BEFORE** and **AFTER** cleaning if cleaning is **NOT** successful.

3. Ensure the following materials are available to clean the headlining assembly:

- Microfiber towels.
- Zep® Foaming Glass Cleaner.
- Portable lighting (to view the work area).
- Compressed air with nozzle.

**NOTICE**

- **Do NOT use a cloth shop towel. The color of the towel will transfer to the headlining assembly, leaving an unremovable stain.**
- **Do NOT use paper shop towels, as they will leave a lint residue on the surface.**
- **Do NOT use any cleaner other than the Zep® Foaming Glass Cleaner specified.**

4. Spray a generous amount of Zep® Foaming Glass Cleaner directly onto the stained area(s) of the headlining assembly.

**NOTE**

If working on a larger stain area, work an area of about 12" X 12" at a time.

5. Allow the foam to sit for 30 seconds.

**Figure 19.**



## Water Entry From One or More Roof Rail Garnish Clips

---

### Headlining Assembly Cleaning Procedure (continued)

6. Scrub the foam into the headlining assembly with a microfiber towel.

**NOTE**

This process should take AT LEAST 30 seconds per 12" X 12" area.

**Figure 20.**

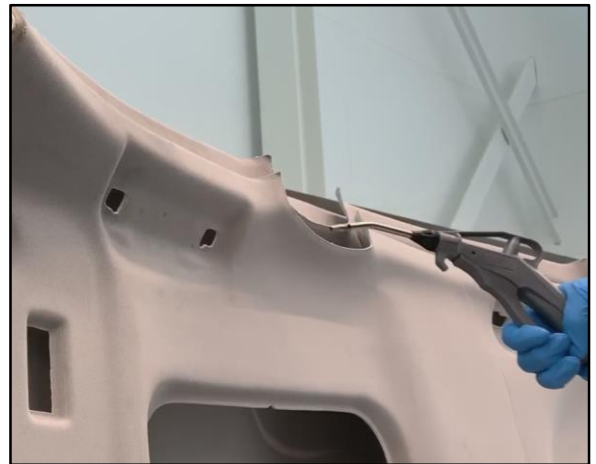


7. Using a compressed air nozzle, blow air across the affected area until it is dry.

**NOTICE**

- **Blow air across the affected area at a 30-degree angle to avoid damage.**
- **Ensure the compressed air line is fitted with a water trap to avoid moisture spray that could stain the headlining assembly.**

**Figure 21.**



8. Inspect the headlining assembly condition AFTER cleaning. The headlining assembly should have NO visible stains remaining.

Have ALL the stains been removed?

- **YES** — Go to the [Roof Rail Garnish Clips and Pad Replacement Procedures](#) section.
- **NO** — Repeat steps 1 – 7 up to three times at EACH stain location.

If it is NOT possible to remove ALL stains after NO MORE than three rounds of cleaning, the headlining assembly will require replacement. Take photos of the stains on the headlining assembly after cleaning with the RO and VIN in the frame and continue to the [CSP Inspection Website Submission Procedure](#) section.

## Water Entry From One or More Roof Rail Garnish Clips

---

### CSP Inspection Website Submission Procedure

CSP inspection website submission is required for ALL vehicles with organic growth that require headlining assembly replacement (due to failed inspection or cleaning), or with water damaged parts found that require replacement beyond the parts listed in this Service Bulletin.

1. Take photographs of ALL water damaged parts, headlining assembly stains, and parts found with organic growth.

**NOTE**

The photographs are required to have the RO and VIN present in the frame.

2. Go to the CSP Inspection Website shown below and document the condition of the vehicle following the instructions and uploading the photos.
  - USA, SERVCO dealer: <https://22te05.imagespm.info/>
  - Puerto Rico USTT/Canadian Dealer: <https://22te05.imagespm.info/>
3. Use your dealer code as the login ID, and “XXXXX” as the default password.
4. AFTER completion of the website submission the FTS will review the documentation. AFTER it has been reviewed by the FTS, the system will provide approval via email to move forward with the repair or may ask for additional information to be submitted.
5. Once approval is received, proceed with the vehicle repair. If the vehicle has organic growth, upon approval from the FTS, the website will route the approval to Servpro™ so that scheduling of the odor remediation can occur. Refer to [T-SB-0094-21](#) *Odor Remediation After Water Intrusion*.

**NOTE**

- After remediation results are finalized, Servpro™ will directly invoice the dealer. Dealers will be reimbursed for the expense via sublet.
- It is the dealer's responsibility to pay the invoice in a timely manner.

## Water Entry From One or More Roof Rail Garnish Clips

---

### Roof Rail Garnish Clips and Pad Replacement Procedures

1. Remove the left-hand side and right-hand side roof rail garnish clips and pad.  
Refer to TIS, applicable model and model year Repair Manual:
  - [2019 – 2021](#) RAV4:  
*Vehicle Exterior – Exterior Panels/Trim – “Exterior Panels / Trim: Roof Rack: Removal”*
  - [2019 – 2021](#) RAV4 HV:  
*Vehicle Exterior – Exterior Panels/Trim – “Exterior Panels / Trim: Roof Rack: Removal”*
  - [2021](#) RAV4 Prime:  
*Vehicle Exterior – Exterior Panels/Trim – “Exterior Panels / Trim: Roof Garnish: Removal”*
2. Ensure the countermeasure clips and pad are NOT damaged.
3. Carefully install the NEW left-hand side and right-hand side roof rail garnish clips and pad and reinstall the roof rail garnish to avoid damage.  
Refer to TIS, applicable model and model year Repair Manual:
  - [2019 – 2021](#) RAV4:  
*Vehicle Exterior – Exterior Panels/Trim – “Exterior Panels / Trim: Roof Rack: Installation”*
  - [2019 – 2021](#) RAV4 HV:  
*Vehicle Exterior – Exterior Panels/Trim – “Exterior Panels / Trim: Roof Rack: Installation”*
  - [2021](#) RAV4 Prime:  
*Vehicle Exterior – Exterior Panels/Trim – “Exterior Panels / Trim: Roof Garnish: Installation”*
4. Was there organic growth found on the vehicle?
  - **YES** — Go to the [Headlining Assembly Replacement Procedure](#) section.
  - **NO** — Continue to step 5.
5. Was the headlining assembly water stain a gray color?
  - **YES** — Continue to step 6.
  - **NO** — Go to the [Headlining Assembly Replacement Procedure](#) section.
6. Were there four or more stains present on the headlining assembly?
  - **YES** — Go to the [Headlining Assembly Replacement Procedure](#) section.
  - **NO** — Continue to step 7.
7. Were ALL stains removed from the headlining assembly?
  - **YES** — The repair is complete, confirm the condition no longer exists.
  - **NO** — Continue to the [Headlining Assembly Replacement Procedure](#) section.

## Water Entry From One or More Roof Rail Garnish Clips

---

### Headlining Assembly Replacement Procedure

1. Remove the vehicle headlining assembly.

Refer to TIS, applicable model and model year Repair Manual:

- [2019 – 2020](#) RAV4:  
*Vehicle Interior – Interior Panels/Trim – “Interior Panels / Trim: Roof Headlining: Removal”*
- [2021](#) RAV4:  
*Vehicle Interior – Interior Panels/Trim – “Interior Panels / Trim: Roof Headlining: Removal”*
- [2019 – 2020](#) RAV4 HV:  
*Vehicle Interior – Interior Panels/Trim – “Interior Panels / Trim: Roof Headlining: Removal”*
- [2021](#) RAV4 HV:  
*Vehicle Interior – Interior Panels/Trim – “Interior Panels / Trim: Roof Headlining: Removal”*
- [2021](#) RAV4 Prime:  
*Vehicle Interior – Interior Panels/Trim – “Interior Panels / Trim: Roof Headlining: Removal”*

2. Install the NEW vehicle headlining assembly.

Refer to TIS, applicable model and model year Repair Manual:

- [2019 – 2020](#) RAV4:  
*Vehicle Interior – Interior Panels/Trim – “Interior Panels / Trim: Roof Headlining: Installation”*
- [2021](#) RAV4:  
*Vehicle Interior – Interior Panels/Trim – “Interior Panels / Trim: Roof Headlining: Installation”*
- [2019 – 2020](#) RAV4 HV:  
*Vehicle Interior – Interior Panels/Trim – “Interior Panels / Trim: Roof Headlining: Installation”*

## Water Entry From One or More Roof Rail Garnish Clips

---

### Headlining Assembly Replacement Procedure (continued)

- [2021](#) RAV4 HV:  
*Vehicle Interior – Interior Panels/Trim – “Interior Panels / Trim: Roof Headlining: Installation”*
  - [2021](#) RAV4 Prime:  
*Vehicle Interior – Interior Panels/Trim – “Interior Panels / Trim: Roof Headlining: Installation”*
3. The repair is complete, confirm the condition is no longer present.

**NOTE**

If applicable, replace the approved water damaged components per the applicable model and model year Repair Manual.