

# Technical Service Bulletin



## 68 Noises from the dash panel around the MMI display

68 23 42 2056298/5 May 19, 2023. Supersedes Technical Service Bulletin Group 68 number 21-33 dated April 20, 2021, for reasons listed below.

Model(s)	Year	VIN Range	Vehicle-Specific Equipment
A7, and A7	2019 – 2021	All	Not Applicable
A6 allroad, S6, S7	2020 – 2021		
RS 6 Avant, A7 e quattro, and RS 7	2021		

## Condition

REVISION HISTORY		
Revision	Date	Purpose
5	-	Revised header (Removed VIN breaks)
4	04/20/2021	Revised header (Correcting Elsa display issues) Revised <i>Production Solution</i> (Updated implementation timeline) Revised <i>Warranty</i> (Modified Labor Operations)
3	02/02/2021	Revised <i>Production Solution</i> (Updated implementation timeline) Revised <i>Warranty</i> (Added Labor Operation for glove compartment R&R)

### Customer states:

- Noises can be heard from the dash panel when driving on poor roads.
- The noise comes from the area near the MMI display.

## Technical Background

The dash panel trim can cause noise at the contact points.

## Production Solution

Improved materials implemented in production in CW07/2021.

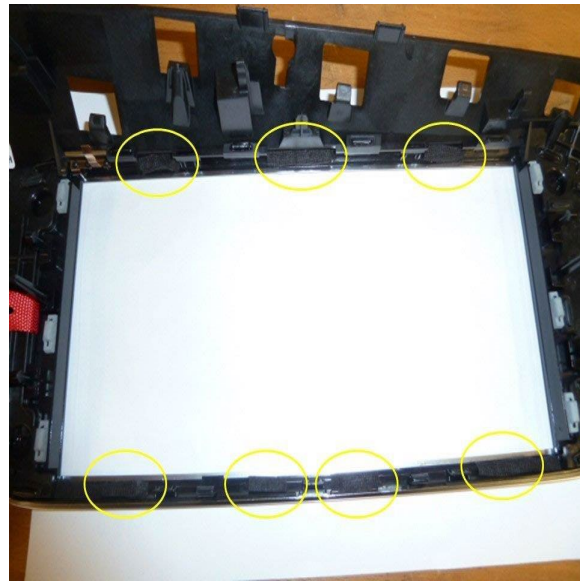


## Service

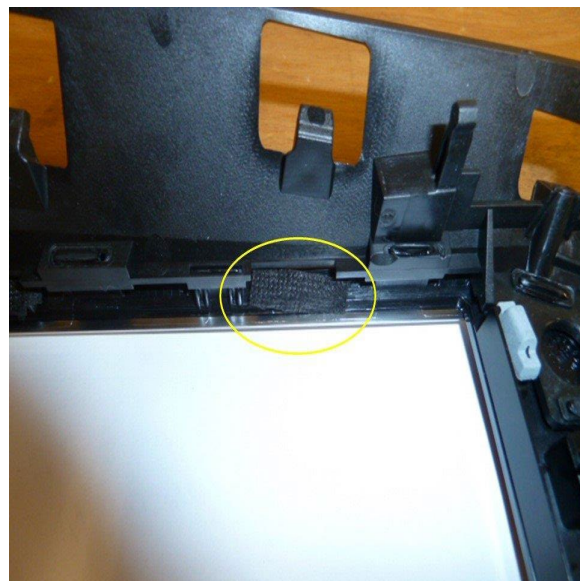
The following material is needed for the repair:

- Felt strips 533867910A.

Remove the trim strip of the dash panel and stick the felt adhesive tape on the areas marked with yellow circles (Figure 1).



*Figure 1. Apply felt strips to the circled areas.*



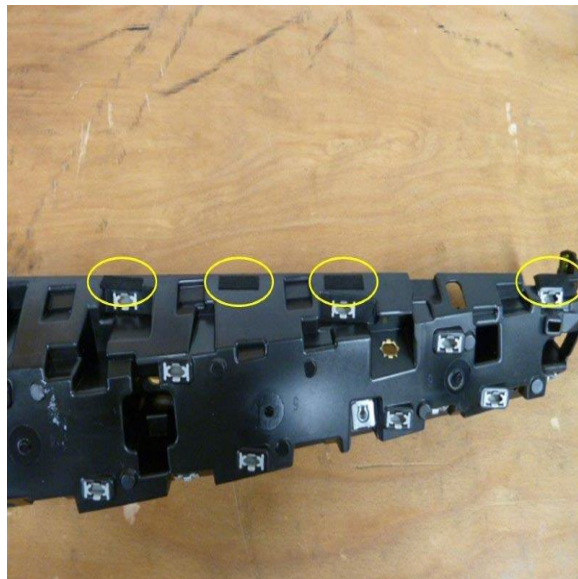
*Figure 2. Close-up of Figure 1.*



The felt strips shown in Figure 1 and 2 must be stuck on and folded back behind the clip (Figures 3 -4).



**Figure 3.** Apply felt strips to the circled areas.



**Figure 4.** Apply felt strips to the circled areas.

3. Reassemble the trim according to the Elsa repair manual.

## Warranty

<b>Claim Type:</b>	<ul style="list-style-type: none"><li>• 110 up to 6 Months/6,000 Miles.</li></ul>
--------------------	---

# Technical Service Bulletin



	<ul style="list-style-type: none"><li>• 1AM over 6 Months/6,000 Miles.</li><li>• If the vehicle is outside any warranty, this Technical Service Bulletin is informational only.</li></ul>		
<b>Service Number:</b>	7058		
<b>Damage Code:</b>	0020		
<b>Labor Operations:</b>	Remove and install dash panel trim	7016 1970	See SRT with associated operations
	Modify dash panel trim	7016 4999	20 TU
<b>Diagnostic Time:</b>	GFF	No allowance	0 TU
	Road test prior to the service procedure	0121 0002	10 TU
	Road test after the service procedure	0121 0004	10 TU
<b>Claim Comment:</b>	As per TSB 2056298/5		

All warranty claims submitted for payment must be in accordance with the *Audi Warranty Policies and Procedures Manual*. Claims are subject to review or audit by Audi Warranty.

## Required Parts and Tools

Always check with your Parts Department and/or ETKA for the latest information and parts bulletins.		
Part Number	Part Description	Quantity
533867910A	Felt Strip	01
See ETKA	Fasteners, Bolts, Nuts, and Screws as needed per the Repair Manual	See ETKA/ELSA

## Additional Information

All parts and service references provided in this TSB (**2056298**) are subject to change and/or removal.

©2023 Audi of America, Inc. All rights reserved. The information contained in this document is based on the latest information available at the time of printing and is subject to the copyright and other intellectual property rights of Audi of America, Inc., its affiliated companies, and its licensors. All rights are reserved to make changes at any time without notice. No part of this document may be reproduced, stored in a retrieval system, or transmitted in any form or by any means, electronic, mechanical, photocopying, recording, or otherwise, nor may these materials be modified or reposted to other sites, without the prior expressed written permission of the publisher.