

## Technical product information

<b>Topic</b>	P148D00 with Symptom Code 13858 - Evaporative Emission System Leak Detection Pump implausible frequency
<b>Market area</b>	Korea, (South) E08 Bentley South Korea (6E08),United States E05 Bentley USA and rest America (6E05)
<b>Brand</b>	Bentley
<b>Transaction No.</b>	2067779/3
<b>Level</b>	EH
<b>Status</b>	Approval
<b>Release date</b>	

### Event memory entries

<b>Diagnostic address</b>	<b>Event memory entry</b>	<b>Fault type</b>	<b>Fault status</b>
0001 - Engine electronics	P148D00: Evaporative Emission System Leak Detection Pump implausible frequency		static

### New customer code

<b>Object of complaint</b>	<b>Complaint type</b>	<b>Position</b>
vehicle service -> vehicle diagnosis -> guided fault finding	control units, services -> with event log entry	
electrical power, electric system, data transfer -> power supply	electrics	
engine -> operation, engine control -> engine control unit	control units, services -> error message	

## Vehicle data

### New Continental GT/C and New Flying Spur - V8 Kovomo

#### Sales types

<b>Type</b>	<b>MY</b>	<b>Brand</b>	<b>Designation</b>	<b>Engine code</b>	<b>Gearbox code</b>	<b>Final drive code</b>
3S32CB	2020	E		*	*	*
3S32CB	2021	E		*	*	*
3S32CB	2022	E		*	*	*
3S42CB	2020	E		*	*	*
3S42CB	2021	E		*	*	*
3S42CB	2022	E		*	*	*
ZG22CB	2021	E		*	*	*
ZG22CB	2022	E		*	*	*

## Documents

<b>Document name</b>
master.xml

## Customer statement / workshop findings

### Customer Statement

Emission control system warning light illuminated within the DIP (Figure 1)



Figure 1

### Workshop findings

DTC P148D00 - Evaporative Emission System Leak Detection Pump implausible frequency - With Symptom Code 13858

### Technical background

In the event the issue is as described the operative should refer to the Measure section of this TPI

### Production change

-

### Measure

#### **CAUTION**

Before continuing with the onward instructions the operative must refer to the following information within Rep.Gr 20

- **Basic safety instructions for working with the fuel system**
  - **Fuel system - Safety precautions**
  - **Fuel system - Rules for cleanliness**
- 1) Referring to the applicable wiring diagram conduct a wiring integrity check of the Leak Detection Pump wiring circuit and connectors
  - 2) Perform a smoke test of the leak detection system - Monitor for any leaks
  - 3) Erase DTC P148D00
  - 4) Once erased - Attempt to reproduce issue by performing the Leak Detection Pump Output test as follows:
    - Referring to Figure 2 - Navigate to Engine control module 1
    - Navigate to Basic settings
    - Select Execute

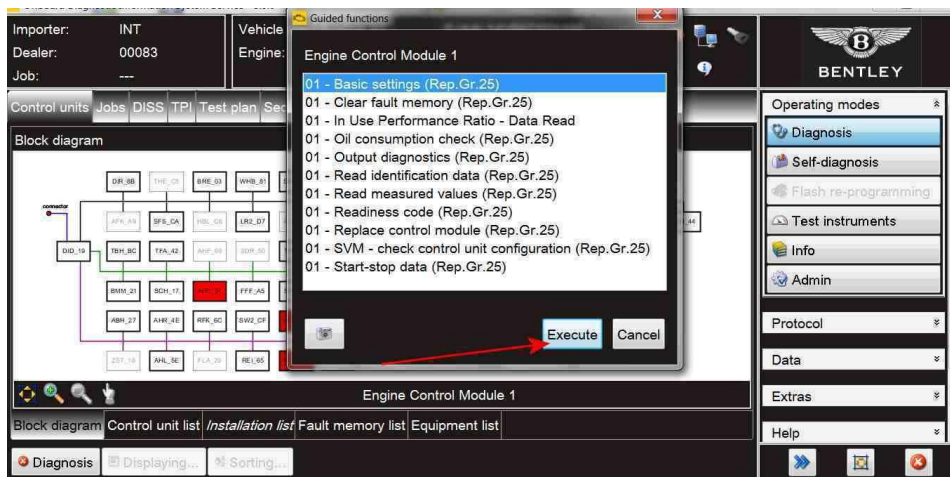


Figure 2

- 5) Referring to Figure 3 - Select -5- Tank leak diagnosis - DMTL (NAR vehicles only) NOTE: The test will also work with South Korea

## specification vehicles

- Follow all remaining screen prompts until completion

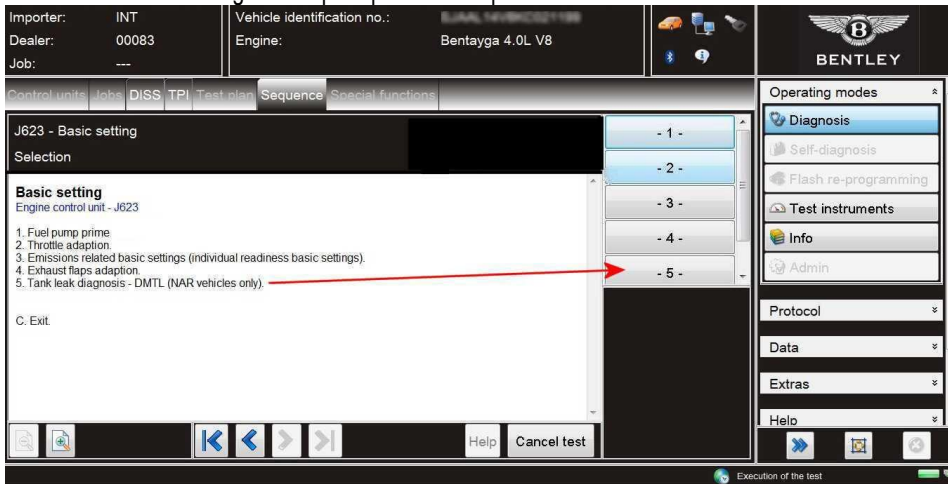


Figure 3

- In the event that no issues were found after conducting steps 1 to 5 the operative should continue with the remaining instructions
- Take a clear photograph ensuring all assembly information is clearly visible (See the example shown in Figure 4)



Figure 4

- Raise a Technical DISS query ensuring the following is attached:

- Photograph of the leak detection pump information as shown in Figure 4
- Full ODIS log

### **NOTICE**

22 Model year vehicles only

- Referring to Rep.GR 21 - Replace the leak detection pump **Hint: For 22 Model year a response from Product Support via DISS is not required please proceed and replace the pump**

### **NOTICE**

All Models except 22 Model year

- Await feedback from Product Support before replacing any parts
- Note to product Support: There is no requirement to second level the DISS query, the requirement for the retailer to raise a DISS query is for monitoring purposes only

## Warranty accounting instructions

Warranty Type 910 or 110

Damage service number 20 48

Damage code 00 17

### **Time to replace the leak detection pump**

Labour Operation Code 20 48 19 00

Time 30 Time units

### **Wiring check**

Labour Operation Code 97 09 01 99

Time 50 Time units

### **Smoke test**

Labour Operation Code 20 48 01 00

Time 50 Time units

## Parts information

Leak detection pump - 7L0 906 243 F