



Service Bulletin

Bulletin No.: 23-NA-074

Date: June, 2023

TECHNICAL

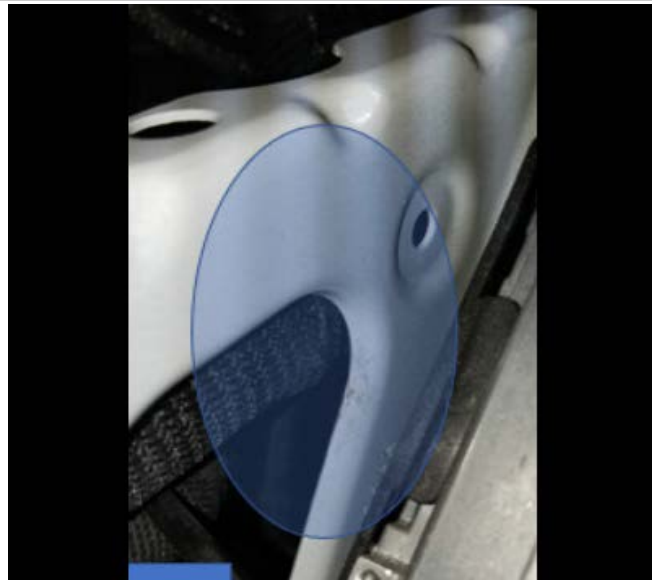
Subject: Service Engine Soon (SES), Reduced Power, Service Brake, Reduced Steering and/or Stabilitrak Message Illuminated on Driver Information Center (DIC), DTCs P0232, P023F, P0641, P0651, P06A3, P0697, P07BE, P1000, P1009, P2535, P129D, P12A6, P12A8, P2635, P3051, P3052, P3055, P3056, P305B, U0074, U0077, U0121, U0131, U0151, U0415, U0420, U0672, U111A, U18A2, U18C6, U18D2, U2502, U2616 Set

This bulletin replaces PIT5847H. Please discard PIT5847H.

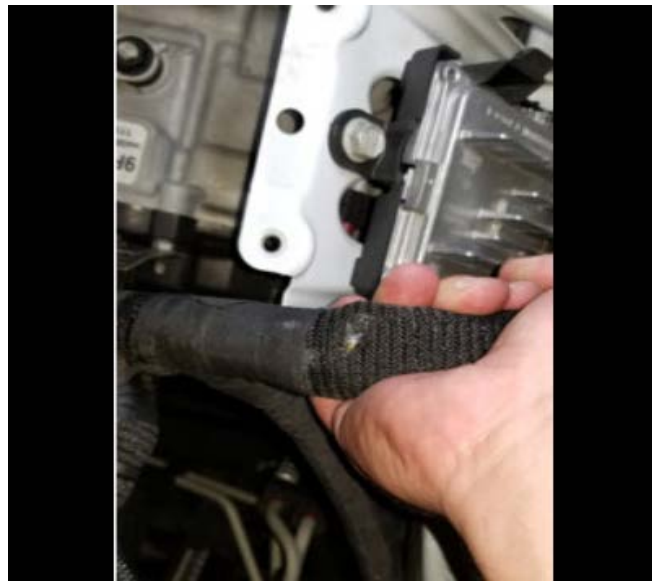
| Brand: | Model: | Model Year: | | VIN Breakpoint: | | Engine: | Transmission: |
|-----------|--------|-------------|------|-----------------|----|---------|---------------|
| | | from | to | from | to | | |
| Cadillac | XT5 | 2019 | 2023 | — | — | All | All |
| | XT6 | | | | | | |
| Chevrolet | Blazer | | | | | | |
| GMC | Acadia | | | | | | |

| Involved Region or Country | North America, Russia, Middle East, Iraq, Israel, Palestine, Japan, Cadillac Korea (South Korea) |
|----------------------------|---|
| Condition | <p>Some customers may comment on having one or more of the following messages illuminated on the Driver Information Center (DIC):</p> <p>Note: This concern may be intermittent.</p> <ul style="list-style-type: none"> • Service Engine Soon (SES) • Reduced Power • Service Brake • Reduced Steering • Stabilitrak <p>Technicians may find one or more of the following DTCs set:</p> <ul style="list-style-type: none"> • P0232 - Pump Control Circuit High Voltage • P023F - Fuel Pump Control Circuit • P0641 - 5V Reference 1 Circuit • P0651 - 5V Reference 2 Circuit • P0697 - 5V Reference 3 Circuit • P06A3 - 5V Reference 4 Circuit • P07BE - Transmission Park Position Switch 1-2 Not Plausible • P1000 - Fuel Pump Driver Control Module Reset Count Message Counter Incorrect • P1009 - Fuel Pump Driver Control Module Temperature High Signal Message Counter Incorrect • P129D - Fuel Pump Driver Control Module Ignition On/Start Switch Circuit Low Voltage • P12A6 - Fuel Pump Driver Control Module Enable Circuit Performance • P12A8 - Fuel Pump Control Status Signal Message Counter Incorrect • P2535 - Ignition On/Start Switch Circuit High Voltage • P2635 - Fuel Pump Flow Performance • P3051 - DC/DC Converter Output Voltage Sensor Circuit 1 Low Voltage • P3052 - DC/DC Converter Output Voltage Sensor Circuit 2 Low Voltage • P3055 - DC/DC Converter Output Voltage 1 Performance • P3056 - DC/DC Converter Output Voltage 2 Performance • P305B - DC/DC Converter Ignition On/Start Switch Circuit High Voltage • U0074 - Control Module Communication Powertrain Expansion CAN Bus Off Malfunction • U0077 - Control Module Communication Chassis Expansion CAN Bus Off • U0121 - Lost Communication with Electronic Brake Control Module • U0131 - Lost Communication With Power Steering Control Module • U0151 - Lost Communication With Inflatable Restraint Sensing and Diagnostic Module • U0415 - Invalid Data Received From Electronic Brake Control Module • U0420 - Invalid Data Received From Power Steering Control Module • U0672 - Lost Communication with Engine Coolant Pump • U111A - Lost Communication with Engine Block Coolant Valve • U18D2 - Lost Communication with Transmission Range Selector Control Module on Powertrain Sensor CAN Bus • U18A2 - Lost Communication with Fuel Pump Driver Control Module • U18C6 - Transmission Range Selector Control Module Lost Communication with Engine Control Module on Powertrain Sensor CAN Bus • U2502 - Invalid Data Received From Electronic Brake Control Module on Chassis Expansion CAN Bus • U2616 - Fuel Pump Driver Control Module Lost Communication with ECM |

Cause



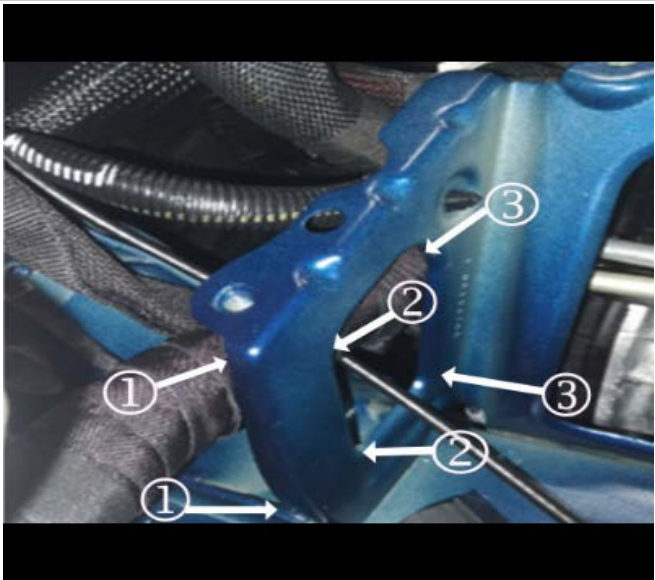
5874841



5874840

This condition may be caused by wire chafing on the battery tray support bracket.

Correction



6326504



6326606

1. Cut 76 mm (3") long strips of deadener and wrap around the edges on the battery tray bracket, as shown in the picture above.



6081026

2. Inspect the area near transmission cooler line bracket, as shown in the photo above. If damage is found, repair the harness, and secure it as necessary.

Service Procedure

Important: Service agents must comply with all International, Federal, State, Provincial, and/or Local laws applicable to the activities it performs under this bulletin, including but not limited to handling, deploying, preparing, classifying, packaging, marking, labeling, and shipping dangerous goods. In the event of a conflict between the procedures set forth in this bulletin and the laws that apply to your dealership, you must follow those applicable laws.

Remove the battery tray. Refer to *Battery Tray Replacement* in SI.

Parts Information

| Causal Part | Description | Part Number | Qty |
|-------------|-----------------------|-------------|-----|
| N/A* | DEADENER (Cut to fit) | 84190291 | 1 |

Warranty Information

For vehicles repaired under the Bumper-to-Bumper coverage (Canada Base Warranty coverage), use the following labor operation. Reference the Applicable Warranties section of Investigate Vehicle History (IVH) for coverage information.

| Labor Operation | Description | Labor Time |
|--|--|------------|
| 4088988* | Install three 76 mm (3") Long Strips of Deadener to the Battery Tray Bracket | 0.9 hr |
| *This is a unique Labor Operation for bulletin use only. | | |

| | |
|----------|--|
| Version | 2 |
| Modified | Released April 19, 2023 Revised June 01, 2023 – Updated the Correction section. |

