

APA4 - Check Connection Points on the Body and Rework if Necessary (Recall Campaign)

Vehicle Type: **911 Carrera (992) / 911 Carrera S (992)
911 Carrera 4 (992) / 911 Carrera 4S (992)
911 GT3 (992)**

Model Year: **As of 2020 up to 2023**

Concerns: **Connecting points on the body**

Cause: **There is a possibility that individual connection points on the body were not executed on the affected vehicles due to a process error in production.**

If this is the case, this could lead to insufficient strength of the body in the event of a crash under certain preconditions. An increased risk of injury to the occupants could not be ruled out.

Action:

- Check connection points **in the underbody(Scope 3)**
- Check and rework connection points **in the underbody(Scope 4)**

Affected vehicles: Only vehicles assigned to the campaign (see also PCSS Vehicle Information).

Vehicle Type: **911 Carrera (992)**

Concerns: **Connecting points on the body**

Cause: **There is a possibility that individual connection points on the body were not executed on the affected vehicles due to a process error in production.**

If this is the case, this could lead to insufficient strength of the body in the event of a crash under certain preconditions. An increased risk of injury to the occupants could not be ruled out.

Action:

- Check connection points **on rear side section(Scope 5)**
- Check connection points **on rear side section** and rework body **(Scope 6)**

Affected Vehicles: Only vehicles assigned to the campaign (see also PCSS Vehicle Information).

Required parts

No parts are required for the **inspection** of the connecting points.

**Information**

Depending on the test result and due to the different connections points of each vehicle to be reworked, the required connecting rivets and screws are listed in the relevant scope.

For this, see Warranty processing.

Required tools

- Tools:
- Torque wrench, 2-10 Nm (1.5-7.4 ftlbs.), e.g. **VAG 1783 torque wrench, 2-10 Nm (1.5-7.4 ftlbs.)**
 - Torque wrench, 6-50 Nm (4.5-37 ftlb.) e.g. **VAG 1331A torque wrench, 6-50 Nm (4.5-37 ftlb.)**

All other required (special) tools can be found in the relevant Workshop Manual.

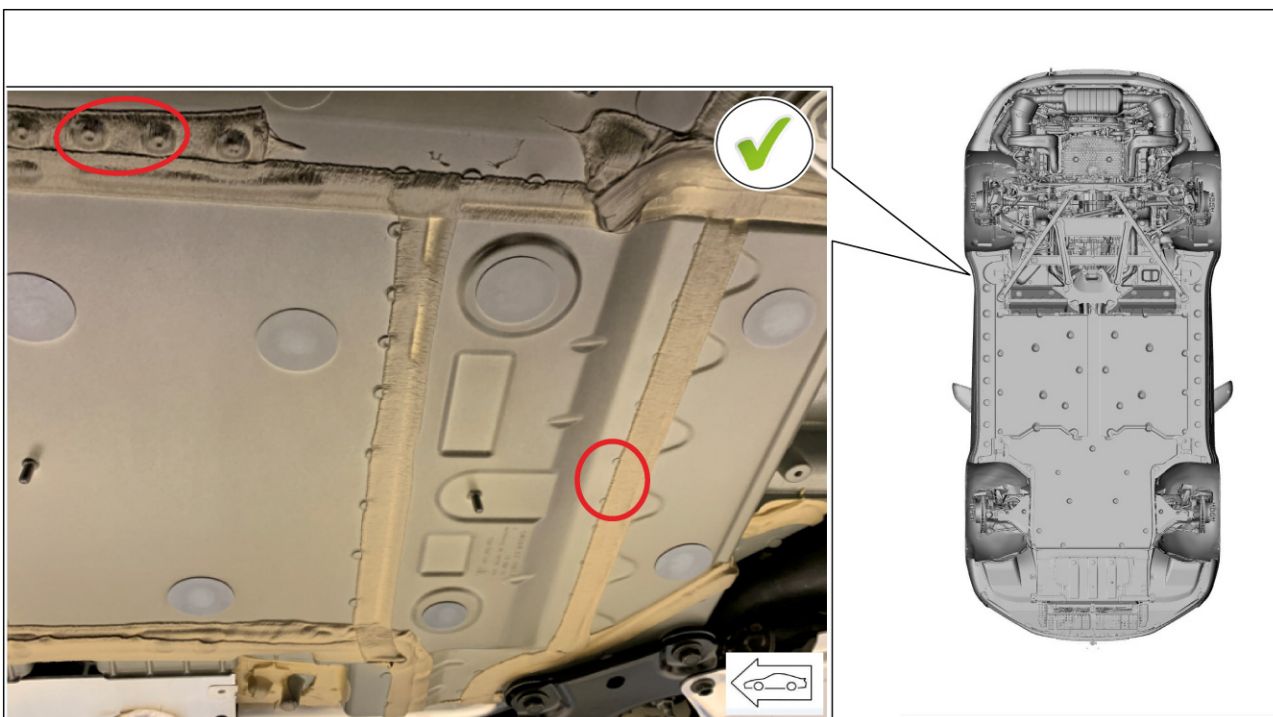
Scope 3: Checking connection points on the underbody**Information**

Due to a process error in production, there is a possibility that **connection points** were not set at several points on the **left and right of the underbody**.

If the connection points were set according to specifications in the rear left underbody area, for example, all other connection points on the side and front underbody are therefore also present.

For the **inspection** of the connection points, it is therefore sufficient to check only in the **rear area of the underbody**.

- Work Procedure: 1 Remove rear underbody cover. ⇒ *Workshop Manual '519419 Removing and installing rear cover'*
- 2 **Visually inspect the connection points** in the marked area of the underbody on the left.



Visual inspection of punch rivets/screws on underbody

Assessment	Action
There are tapping screws and punch rivets on the underbody.	All connection points are set according to specifications and do not have to be reworked. End of remedial action. ⇒ Continue with Step 3 [Scope 3]
No connection points present on the underbody on the left.	Connecting points are not set according to specifications. Parts of the underbody must be reworked . ¹ ⇒ Continue with repair instructions from APA4 PPN document [Scope 4]

¹ Perform photo documentation and upload the clearly identifiable pictures to the PCCS quality line with the relevant **description** of the affected side, e.g. **underbody left_VIN_Figure 1**



Information

Porsche Centers that hand over the vehicle to an external service provider to carry out the body work are asked to observe the following points:

- The preliminary work must be carried out by the Porsche Center.
 - Before handing over the vehicle, the affected area must be marked using a marking pen.
 - Record details of the affected area in the order form or pass this Technical Information on to your service provider if necessary.
 - The scope of rework to be performed by the service provider must be limited to the affected area so that no large surface areas are reworked.
- 3 Install the rear underbody cover. ⇒ *Workshop Manual '519419 Removing and installing rear cover'*
 - 4 Enter the campaign in the Warranty and Maintenance logbook.

End of remedial action

For warranty processing, see **General information on warranty processing** and **Scope 3** in the section ⇒ *Technical Information '519419 Warranty processing'*.

Scope 5: Check connection points on rear side section



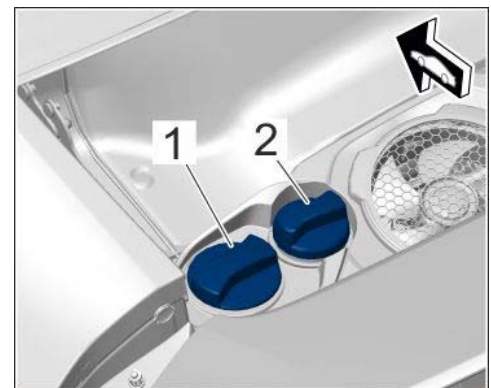
Information

Due to a process error in production, there is a possibility that **connection points** were not set at several points on the **left and right of the body**.

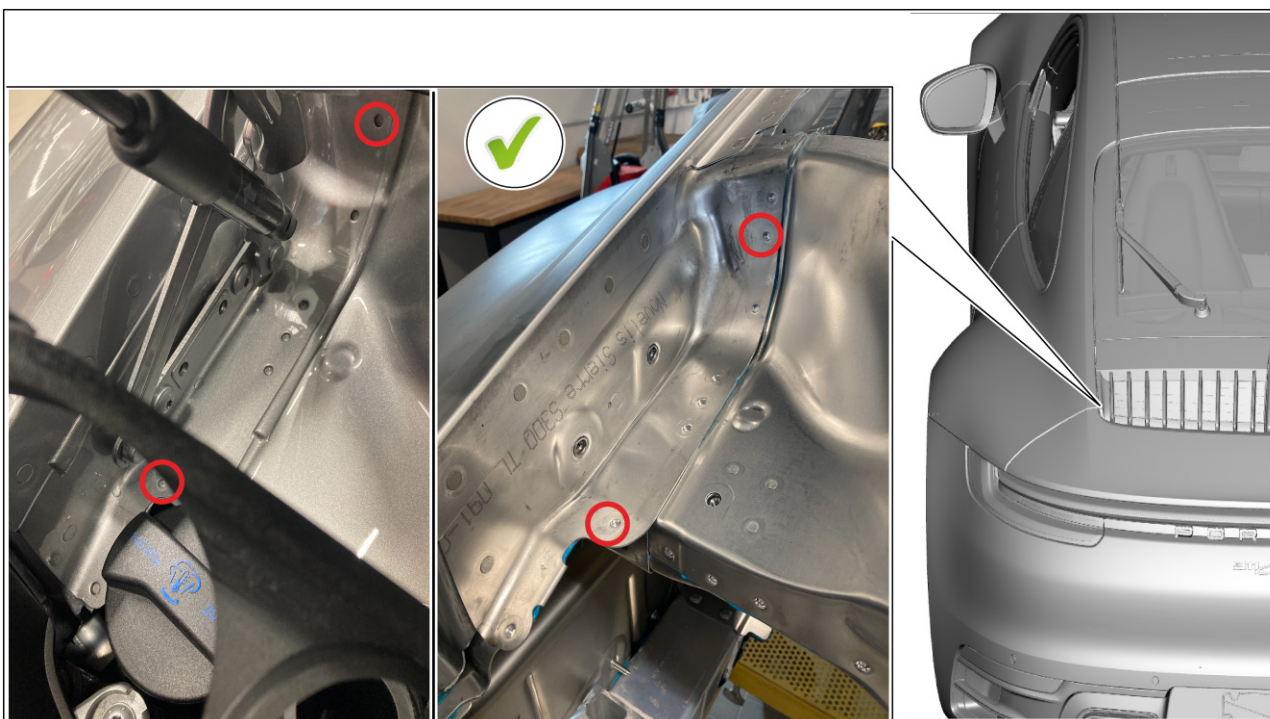
If the connection points were set according to specifications in the rear side section area as an example, they are therefore also present on other areas of the body.

For the **inspection** of the connection points, it is therefore sufficient to check **only in the rear area of the left side section**.

- Work Procedure:
- 1 Open the rear lid.
 - 2 Unscrew oil filler neck cover ⇒ *Oil filler neck cap -2-* and unclip left engine cover slightly upwards.
 - 3 **Visually inspect the connection points** in the marked area of the rear left side section.



Oil filler neck cap



Visual inspection of rear side section clinch points

Assessment	Action
<p>There are clinch points on the side section.</p>	<p>All clinch points are set according to specifications and do not have to be reworked.</p> <p>End of remedial action. ⇒ Continue with Step 4</p> <p>[Scope 5]</p>
<p>No connection points present on the side section.</p>	<p>Connecting points are not set according to specifications. Parts of the body must be reworked.² ⇒ Continue with repair instructions from APA4 PPN document</p> <p>[Scope 6]</p>

² Perform photo documentation and upload the clearly identifiable pictures to the PCCS quality line with the relevant **description** of the affected side, e.g. **side panel left_VIN_Figure 1**

**Information**

Porsche Centers that hand over the vehicle to an external service provider to carry out the body work are asked to observe the following points:

- The preliminary work must be carried out by the Porsche Center.
 - Before handing over the vehicle, the affected area must be marked using a marking pen.
 - Record details of the affected area in the order form or pass this Technical Information on to your service provider if necessary.
 - The scope of rework to be performed by the service provider must be limited to the affected area so that no large surface areas are reworked.
- 4 Press in engine cover and screw in the oil filler neck cover again.
 - 5 Close the rear lid.
 - 6 Enter the campaign in the Warranty and Maintenance logbook.

End of remedial action

For warranty processing, see **General information on warranty processing** and **Scope 5** in the section ⇒ *Technical Information '519419 Warranty processing'*.

Warranty processing

Scope 1-2: **Not relevant for this vehicle type – see relevant Technical Information for the vehicle types.**

Scope 3: **Check connection points on the underbody**

Check connection points on the underbody
Includes: Remove and install rear underbody cover

Labor time: **164 TU**

⇒ **Damage Number APA4 099 000 1**

Scope 4: **Check connection points on the underbody and rework**

**Information**

Please invoice the rework for restoring the connection points on the underbody via scope 4 of this campaign in WWS. This will ensure that the campaign is documented as Completed in the systems. Labor costs incurred can be invoiced using a **reimbursement claim for the original campaign claim** for this action.

Check connection points on the underbody and rework
Includes: Remove and install covers for underbody
Remove and install front-axle support

Labor time: **0 TU**

Required part numbers:*	Designation – Location	Quantity
99907391701	Lens-head screw (flowdrill) – Underbody:	As required

Outsourced labor: (only if necessary)

Restoring connection points and performing surface treatment

Outsourced labor
time: **0 TUs****

*If other parts are required to carry out the action, please refer to the corresponding workshop manuals in the PCSS and PET Parts Catalogue. Any additional costs incurred must then be invoiced using the reimbursement claim.

**Outsourced labor time incurred must be remunerated based on the individual warranty charging rate of the respective Porsche Center and invoiced using the reimbursement claim. Please include a copy of the subcontractor's invoice with the warranty claim.

⇒ **Damage Number APA4 099 000 1**

Examples
of correctly
performed
welds



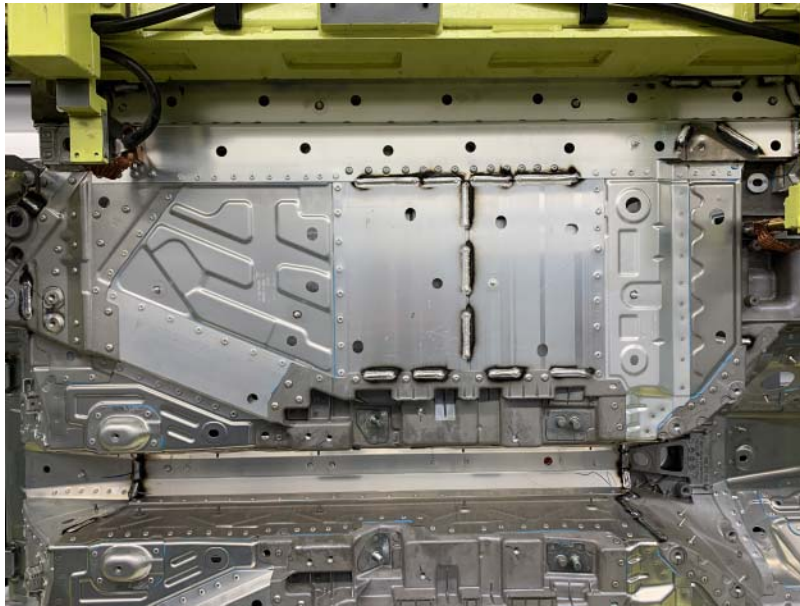
Example 1



Example 2



Example 3



Example 4



Example 5



Example 6



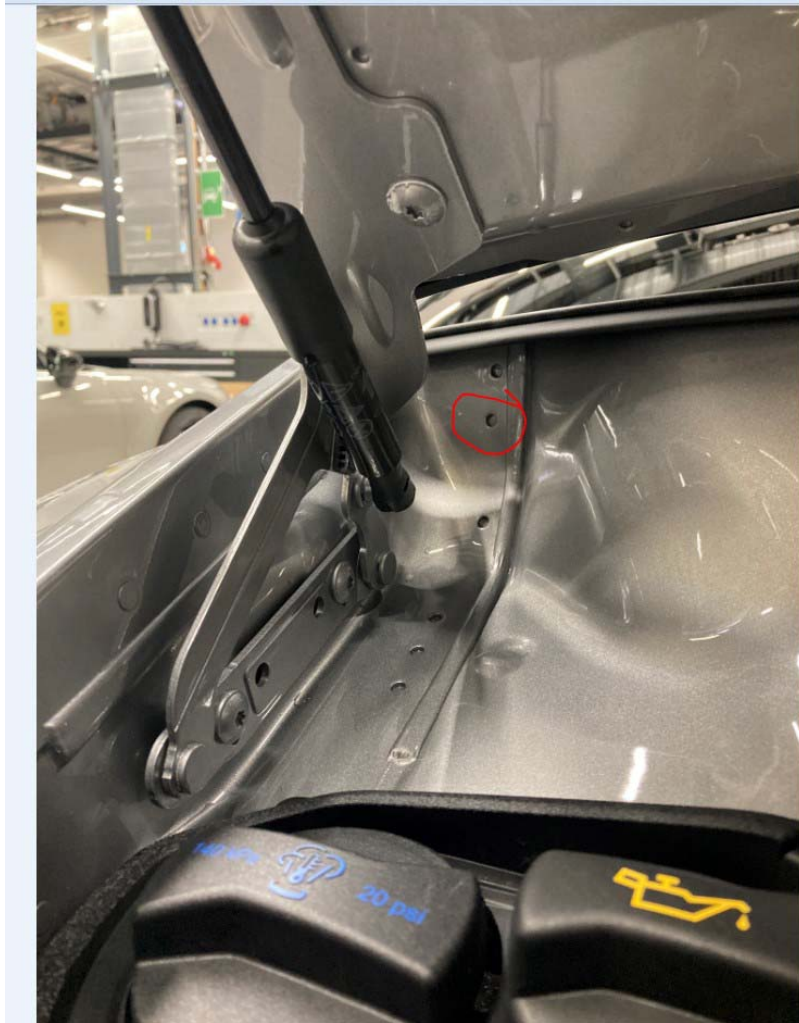
Example 7



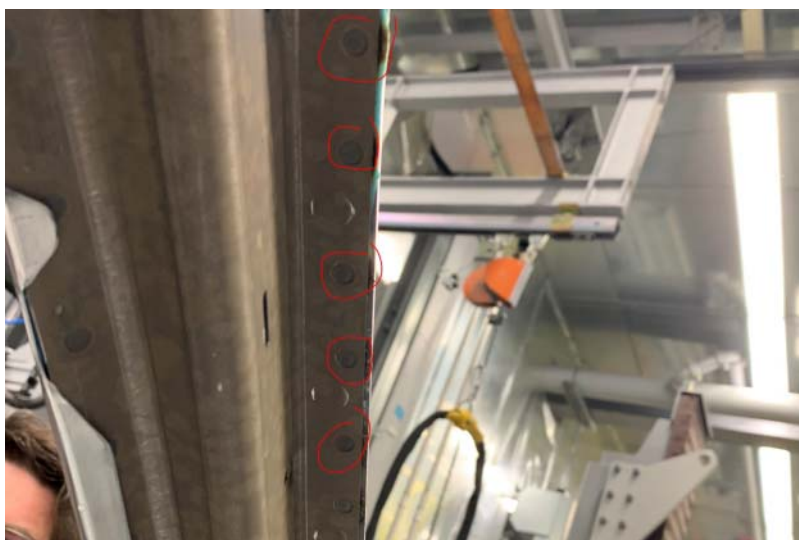
Example 8



Example 9



Example 10



Example 11



Example 12

Warranty processing

Scope 1-4: **Not relevant for this vehicle type – see relevant Technical Information for the vehicle types.**

Scope 5: **Check connection points on rear side section**

Check connection points on rear side section

Labor time: **38 TU**

⇒ **Damage Number APA4 099 000 1**

Scope 6:

Check connection points on rear side section and rework body



Information

Please invoice the rework for restoring the connection points via Scope 6 of this campaign in WWS. This will ensure that the campaign is documented as Completed in the systems.

Labor costs incurred can be invoiced using a **reimbursement claim for the original campaign claim** for this action.

Check connection points on rear side section and rework body

Labor time: **0 TU**

Includes:

- Remove and install A-pillar trim panel
- Remove and install B-pillar trim panel
- Remove and install C-pillar trim panel
- Remove and install roof trim panel
- Remove and install side window
- Remove and install rear side trim panel
- Remove and install windshield
- Remove and install wing
- Remove and install rear bumper
- Remove and install door entry guard

Required part numbers:*	Designation – Location	Quantity
PAF912884	Blind rivet – Rear bulkhead/side member	As required
PAF009075	Blind rivet – Rear light	As required
PAF009076	Blind rivet – Cowl panel frame	As required
PAF009418	Blind rivet – Roof frame	As required
99907391701	Lens-head screw (flowdrill) – A-pillar/rear light	As required

Outsourced labor: (only if necessary)

Restoring connection points and performing surface treatment

Outsourced labor
time: **0 TUs****

*If other parts are required to carry out the action, please refer to the corresponding workshop manuals in the PCSS and PET Parts Catalogue. Any additional costs incurred must then be invoiced using the reimbursement claim.

**Outsourced labor time incurred must be remunerated based on the individual warranty charging rate of the respective Porsche Center and invoiced using the reimbursement claim. Please include a copy of the subcontractor's invoice with the warranty claim.

⇒ **Damage Number APA4 099 000 1**

Important Notice: Technical Bulletins issued by Porsche Cars North America, Inc. are intended only for use by professional automotive technicians who have attended Porsche service training courses. They are written to inform those technicians of conditions that may occur on some Porsche vehicles, or to provide information that could assist in the proper servicing of a vehicle. Porsche special tools may be necessary in order to perform certain operations identified in these bulletins. Use of tools and procedures other than those Porsche recommends in these bulletins may be detrimental to the safe operation of your vehicle, and may endanger the people working on it. Properly trained Porsche technicians have the equipment, tools, safety instructions, and know-how to do the job properly and safely. Part numbers listed in these bulletins are for reference only. The work procedures updated electronically in the Porsche PIWIS diagnostic and testing device take precedence and, in the event of a discrepancy, the work procedures in the PIWIS Tester are the ones that must be followed.

© 2023 Porsche Cars North America, Inc.