

WPA6 - Replacing Engine Data Adhesive Label (Workshop Campaign)

Model Line: **911 (992)**

Model Year: **As of 2020 up to 2021**

Country /
Market: United States / Puerto Rico (C02)
Canada (C36)

Concerns: **Engine data adhesive label**

Cause: **Due to a process error, there is a possibility that an engine data label (VECI label) with incorrect engine data information has been affixed to the affected vehicles.**

This may result in the vehicle registration being refused by the vehicle registration office.

Action: Replace the engine data adhesive label.



Information

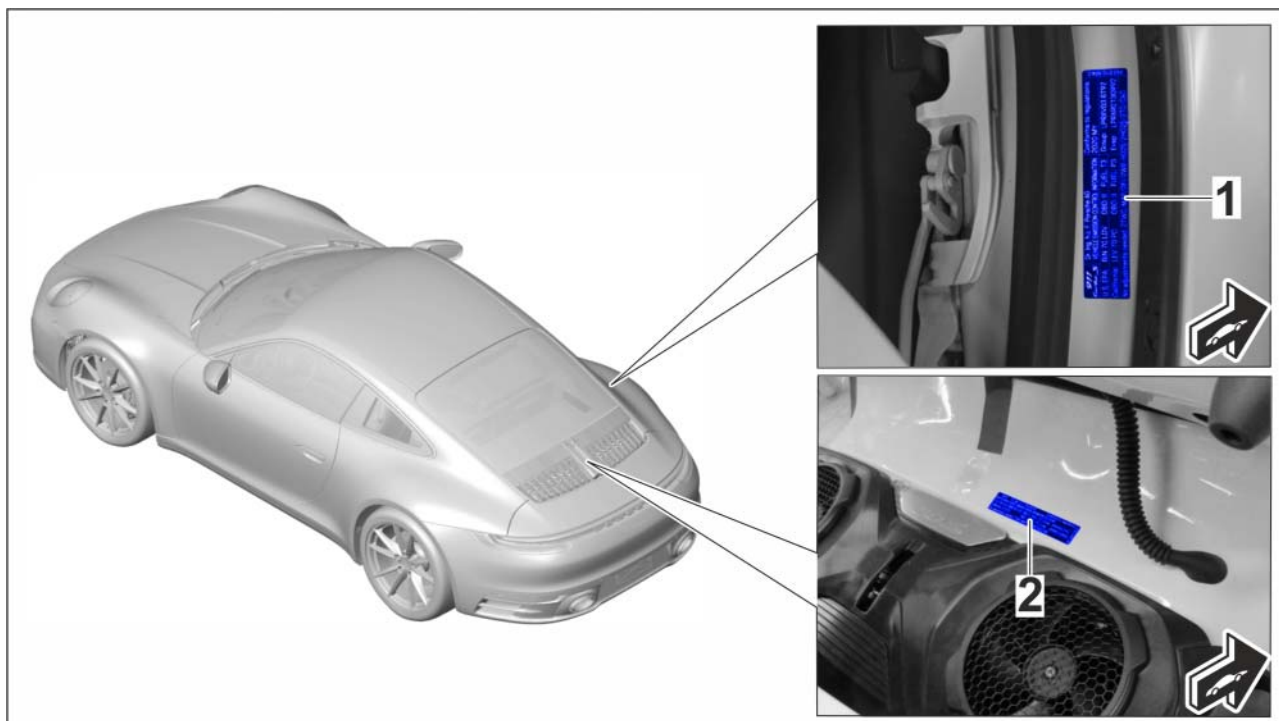
Every vehicle is assigned to exactly one campaign scope.

To find out which scope is assigned to the vehicle, see PCSS Vehicle Information.

Affected
Vehicles: Only vehicles assigned to the campaign (see also PCSS Vehicle Information).

Installation

Position:



Installation position of engine data adhesive label

- 1 – **Replacing** engine data adhesive label (Cabrio / Targa)
- 2 – **Replacing** engine data adhesive label (Coupé)

Required parts (2020 911 Carrera, 911 Carrera 4)

| Part Info: | Part No. | Designation | Quantity |
|------------|-------------|------------------------------------|----------|
| | V04015001ED | ⇒ Engine data identification plate | 1 piece |

Required parts (2021 911 Carrera, 911 Carrera 4)

| Part Info: | Part No. | Designation | Quantity |
|------------|-------------|------------------------------------|----------|
| | V04015001EE | ⇒ Engine data identification plate | 1 piece |

Required parts (2020 911 Carrera S, 911 Carrera 4S, 911 Targa 4S)

| Part Info: | Part No. | Designation | Quantity |
|------------|-------------|------------------------------------|----------|
| | V04015001EF | ⇒ Engine data identification plate | 1 piece |

Required parts (2021 911 Carrera S, 911 Carrera 4S, 911 Targa 4S, 911 Targa 4S Heritage Design Edition)

| Part Info: | Part No. | Designation | Quantity |
|------------|-------------|------------------------------------|----------|
| | V04015001EG | ⇒ Engine data identification plate | 1 piece |

Required parts (2020 911 Turbo)

| Part Info: | Part No. | Designation | Quantity |
|------------|-------------|------------------------------------|----------|
| | V04015001EJ | ⇒ Engine data identification plate | 1 piece |

Required parts (2021 911 Turbo)

| Part Info: | Part No. | Designation | Quantity |
|------------|-------------|------------------------------------|----------|
| | V04015001EK | ⇒ Engine data identification plate | 1 piece |

Required parts (2020 911 Turbo S)

| Part Info: | Part No. | Designation | Quantity |
|------------|-------------|------------------------------------|----------|
| | V04015001EL | ⇒ Engine data identification plate | 1 piece |

Required parts (2021 911 Turbo S)

| Part Info: | Part No. | Designation | Quantity |
|------------|-------------|------------------------------------|----------|
| | V04015001EM | ⇒ Engine data identification plate | 1 piece |

Required parts (2021 911 Carrera GTS, 911 Carrera 4 GTS)

| Part Info: | Part No. | Designation | Quantity |
|------------|-------------|------------------------------------|----------|
| | V04015001EN | ⇒ Engine data identification plate | 1 piece |

Required tools

- Tools:
- Hot-air gun
 - Film eraser

Required materials

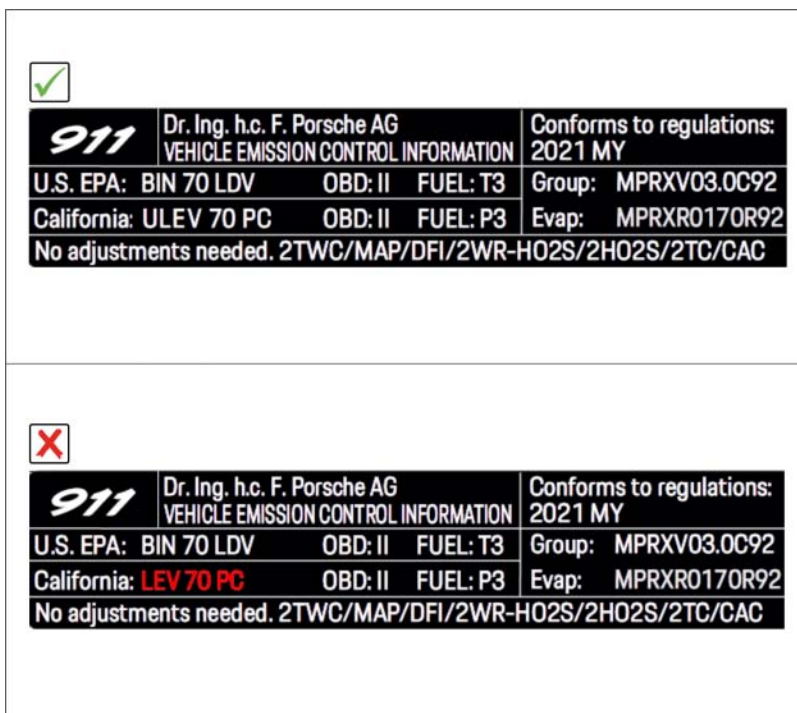
Materials: **Required materials** (usually already available at the Porsche dealer):

- Cleaning agent, e.g. isopropanol*
- Cleaning cloth*

* For warranty processing, enter the part number **WPA660000001** with the designation "Expendable item" as an **additional part** in the warranty claim, max. amount \$0.53.

Replacing engine data adhesive label (Coupe)

Work Procedure: 1 Open the rear lid.



Checking engine data adhesive label

- 2 Before affixing the new adhesive label, check whether there are any differences in the information.
 - Not OK LEV 70 PC
 - OK ULEV 70 PC

NOTICE

Effects of heat from hot-air gun

- Risk of damage to paintwork, interior and peripheral components
- ⇒ Heat sticker carefully and only for as long as absolutely necessary

- 3 Carefully heat the affixed adhesive label with a hot-air gun.
- 4 Carefully remove the adhesive label. Heat the adhesive label again several times using the hot-air gun if necessary. Carefully remove adhesive label residue from the paintwork and clean bonding surfaces using a suitable cleaning agent (e.g. isopropanol).



Information

Make sure there are no residues from the adhesive on the old adhesive label.
After cleaning the surface, dry off the air before affixing the new adhesive label.

- 5 Destroy and dispose of the old adhesive label.

- 6 Affix the new adhesive label at the same position and with the same text alignment as the original adhesive label.

- 7 Attach **Recall Proof of Completion label** to the front lid (**California dealers only**).

Instructions for attaching labels

- Surfaces on which you intend to attach the label must be clean, dry and free from grease and oil residues.
- Before attaching the label, clean the surfaces using a suitable cleaning agent and a clean, grease-free and lint-free cloth.
- This label must not be affixed over existing label.
- Attach label only at the specified positions.

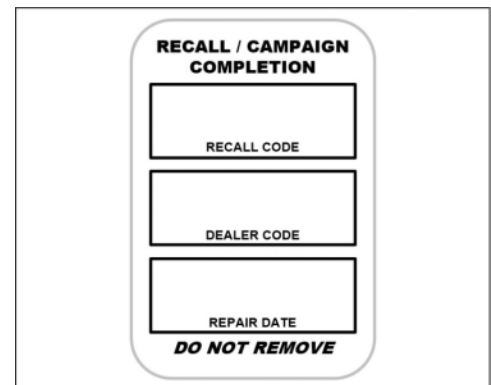
- 7.1 Fill out the Recall Proof of Completion label
⇒ *Recall Proof of Completion Label* fully and correctly. This includes the recall code "WPA6", your dealer code and the repair date.

- 7.2 Clean the surface in the lower area on the front lid at the left-hand side in direction of travel at which the Recall Proof of Completion label must be attached ⇒ *Proof of Completion Label: specified position -arrow-* using a suitable cleaning agent and a clean, grease-free and lint-free cloth.

- 7.3 Affix Recall Proof of Completion label in the lower area of the front lid at the lefthand side in direction of travel ⇒ *Proof of Completion Label: specified position -arrow-*.

Exemplary illustration — 911 (992) position accordingly

- 8 Close the rear lid.
- 9 Enter the campaign in the Warranty and Maintenance booklet.



Recall Proof of Completion Label

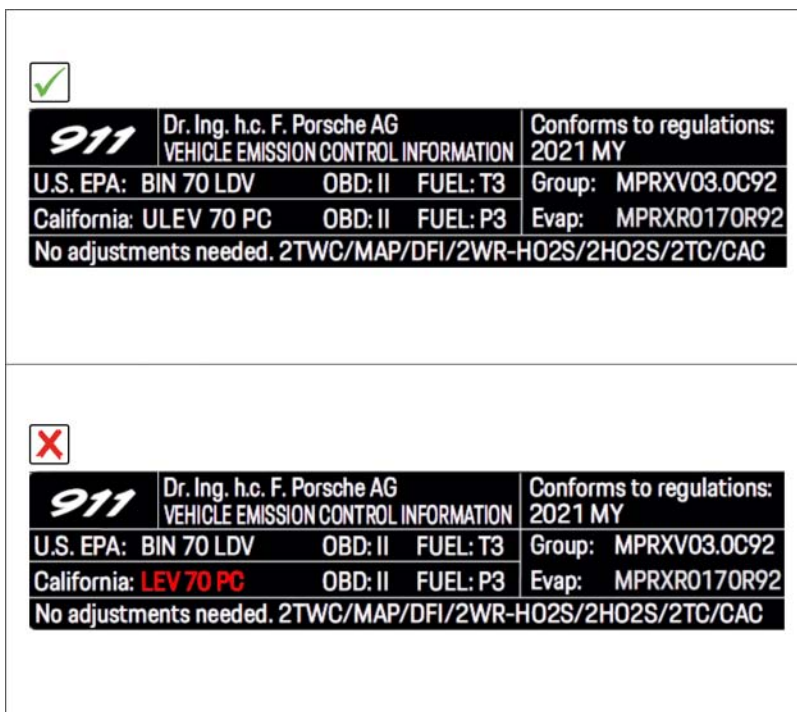


Proof of Completion Label: specified position

Replacing engine data adhesive label (Cabriolet and Targa)

Work Procedure: 1 **Targa vehicles:** Move convertible top to service position. ⇒ *Workshop Manual '6101N10 Convertible top service position'*

Cabrio vehicles: Move convertible top to service position. ⇒ *Workshop Manual '6101IN15 Convertible top service position'*



Checking engine data adhesive label

- 2 Before affixing the new adhesive label, check whether there are any differences in the information.
 - Not OK LEV 70 PC
 - OK ULEV 70 PC

NOTICE

Effects of heat from hot-air gun

- Risk of damage to paintwork, interior and peripheral components
- ⇒ Heat sticker carefully and only for as long as absolutely necessary

- 3 Carefully heat the affixed adhesive label with a hot-air gun.
- 4 Carefully remove the adhesive label. Heat the adhesive label again several times using the hot-air gun if necessary. Carefully remove adhesive label residue from the paintwork and clean bonding surfaces using a suitable cleaning agent (e.g. isopropanol).

**Information**

Make sure there are no residues from the adhesive on the old adhesive label.

After cleaning the surface, dry off the air before affixing the new adhesive label.

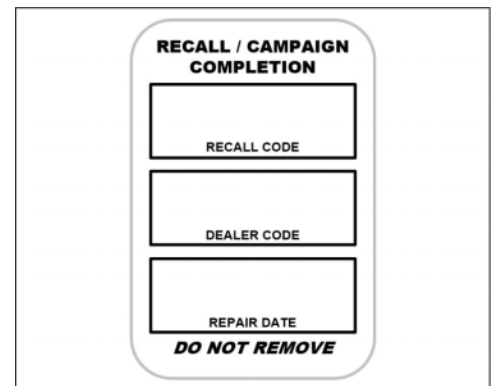
- 5 Destroy and dispose of the old adhesive label.
- 6 Affix the new adhesive label at the same position and with the same text alignment as the original adhesive label.
- 7 Attach **Recall Proof of Completion label** to the front lid (**California dealers only**).

Instructions for attaching labels

- Surfaces on which you intend to attach the label must be clean, dry and free from grease and oil residues.
- Before attaching the label, clean the surfaces using a suitable cleaning agent and a clean, grease-free and lint-free cloth.
- This label must not be affixed over existing label.
- Attach label only at the specified positions.

7.1 Fill out the Recall Proof of Completion label
⇒ *Recall Proof of Completion Label* fully and correctly. This includes the recall code "**WPA6**", your dealer code and the repair date.

7.2 Clean the surface in the lower area on the front lid at the left-hand side in direction of travel at which the Recall Proof of Completion label must be attached ⇒ *Proof of Completion Label: specified position* **-arrow-** using a suitable cleaning agent and a clean, grease-free and lint-free cloth.



Recall Proof of Completion Label

7.3 Affix Recall Proof of Completion label in the lower area of the front lid at the lefthand side in direction of travel ⇒ *Proof of Completion Label: specified position -arrow-*.

Exemplary illustration — 911 (992) position accordingly

8 **Targa vehicles:** End service position. ⇒ *Workshop Manual '6101IN10 Convertible top service position'*

Cabrio vehicles: End service position. ⇒ *Workshop Manual '6101IN15 Convertible top service position'*

9 Enter the campaign in the Warranty and Maintenance booklet.



Proof of Completion Label: specified position

Warranty processing

Scope 1-2: **Not relevant for this vehicle type.**

Scope 3: **Replacing engine data adhesive label**

- 911 Carrera (992)

| | | |
|--------------------------------------|---|--------------------------|
| Labor time: | | |
| Replacing engine data adhesive label | | Labor time: 36 TU |
| Required parts: | | |
| Model year 2020: | | |
| V04015001ED | Engine data identification plate | 1 piece |
| or | | |
| Model year 2021: | | |
| V04015001EE | Engine data identification plate | 1 piece |
| PNA EMI 000 00* | Label – Recall Proof of Completion | 1 ea. |
| PNA 999 100 235* | Certificate - Recall Proof of Correction | 1 ea. |

*** California dealers only:**

- For warranty processing, enter the Part No. **PNA EMI 000 00** with the designation "label" as a **local part** at US\$ 0.34 in the warranty claim.
- For warranty processing, enter the Part No. **PNA 999 100 235** with the designation "certificate" as a **local part** at US\$ 0.01 in the warranty claim.

Required materials:

| | | |
|---------------|-----------------|---------|
| WPA60000001** | Expendable item | 1 piece |
|---------------|-----------------|---------|

** For warranty processing, the **Part No. WPA60000001** with the "Expendable item" designation can be invoiced as an **additional part** in the warranty claim. costing \$0.53.

⇒ **Damage Code WPA6 066 000 2**

Warranty processing

Scope 1-3: **Not relevant for this vehicle type.**

Scope 4: **Replacing engine data adhesive label**

- 911 Carrera Cabriolet (992)

Labor time:

Replacing engine data adhesive label

Labor time: **42 TU**

Required parts:

Model year 2020:

| | | |
|-------------|----------------------------------|---------|
| V04015001ED | Engine data identification plate | 1 piece |
|-------------|----------------------------------|---------|

or

Model year 2021:

| | | |
|-------------|----------------------------------|---------|
| V04015001EE | Engine data identification plate | 1 piece |
|-------------|----------------------------------|---------|

| | | |
|-----------------|---------------------------------------|-------|
| PNA EMI 000 00* | Label – Recall Proof of Completion | 1 ea. |
|-----------------|---------------------------------------|-------|

| | | |
|---------------------|---|-------|
| PNA 999 100 235* | Certificate - Recall Proof of Correction | 1 ea. |
|---------------------|---|-------|

| | | |
|--|-----------------|---------|
| <p>* California dealers only:</p> <ul style="list-style-type: none"> For warranty processing, enter the Part No. PNA EMI 000 00 with the designation "label" as a local part at US\$ 0.34 in the warranty claim. For warranty processing, enter the Part No. PNA 999 100 235 with the designation "certificate" as a local part at US\$ 0.01 in the warranty claim. | | |
| <p>Required materials:</p> | | |
| WPA60000001** | Expendable item | 1 piece |
| <p>** For warranty processing, the Part No. WPA60000001 with the "Expendable item" designation can be invoiced as an additional part in the warranty claim. costing \$0.53.</p> <p>⇒ Damage Code WPA6 066 000 2</p> | | |

Warranty processing

Scope 1-4: **Not relevant for this vehicle type.**

Scope 5: **Replacing engine data adhesive label**

- 911 Targa (992) model year 2021

| | | |
|--|---|---------|
| <p>Labor time:</p> <p>Replacing engine data adhesive label Labor time: 54 TU</p> | | |
| <p>Required parts:</p> | | |
| V04015001EE | Engine data identification plate | 1 piece |
| PNA EMI 000 00* | Label – Recall Proof of Completion | 1 ea. |
| PNA 999 100 235* | Certificate - Recall Proof of Correction | 1 ea. |
| <p>* California dealers only:</p> <ul style="list-style-type: none"> For warranty processing, enter the Part No. PNA EMI 000 00 with the designation "label" as a local part at US\$ 0.34 in the warranty claim. For warranty processing, enter the Part No. PNA 999 100 235 with the designation "certificate" as a local part at US\$ 0.01 in the warranty claim. | | |
| <p>Required materials:</p> | | |
| WPA60000001* | Expendable item | 1 piece |

* For warranty processing, the **Part No. WPA60000001** with the "Expendable item" designation can be invoiced as an **additional part** in the warranty claim. costing \$0.53.

⇒ **Damage Code WPA6 066 000 2**

Warranty processing

Scope 1-5: **Not relevant for this vehicle type.**

Scope 6: **Replacing engine data adhesive label**

- 911 Carrera S (992)

| | | |
|--|---|--------------------------|
| Labor time: | | |
| Replacing engine data adhesive label | | Labor time: 36 TU |
| Required parts: | | |
| Model year 2020: | | |
| V04015001EF | Engine data identification plate | 1 piece |
| or | | |
| Model year 2021: | | |
| V04015001EG | Engine data identification plate | 1 piece |
| PNA EMI 000 00* | Label – Recall Proof of Completion | 1 ea. |
| PNA 999 100 235* | Certificate - Recall Proof of Correction | 1 ea. |
| <p>* California dealers only:</p> <ul style="list-style-type: none"> • For warranty processing, enter the Part No. PNA EMI 000 00 with the designation "label" as a local part at US\$ 0.34 in the warranty claim. • For warranty processing, enter the Part No. PNA 999 100 235 with the designation "certificate" as a local part at US\$ 0.01 in the warranty claim. | | |
| Required materials: | | |
| WPA60000001** | Expendable item | 1 piece |
| <p>** For warranty processing, the Part No. WPA60000001 with the "Expendable item" designation can be invoiced as an additional part in the warranty claim. costing \$0.53.</p> <p>⇒ Damage Code WPA6 066 000 2</p> | | |

Warranty processing

Scope 1-6: **Not relevant for this vehicle type.**

Scope 7: **Replacing engine data adhesive label**

- 911 Carrera S Cabriolet (992)

| | | |
|--|---|--------------------------|
| Labor time: | | |
| Replacing engine data adhesive label | | Labor time: 42 TU |
| Required parts: | | |
| Model year 2020: | | |
| V04015001EF | Engine data identification plate | 1 piece |
| or | | |
| Model year 2021: | | |
| V04015001EG | Engine data identification plate | 1 piece |
| PNA EMI 000 00* | Label – Recall Proof of Completion | 1 ea. |
| PNA 999 100 235* | Certificate - Recall Proof of Correction | 1 ea. |
| <p>* California dealers only:</p> <ul style="list-style-type: none"> • For warranty processing, enter the Part No. PNA EMI 000 00 with the designation "label" as a local part at US\$ 0.34 in the warranty claim. • For warranty processing, enter the Part No. PNA 999 100 235 with the designation "certificate" as a local part at US\$ 0.01 in the warranty claim. | | |
| Required materials: | | |
| WPA60000001** | Expendable item | 1 piece |
| <p>** For warranty processing, the Part No. WPA60000001 with the "Expendable item" designation can be invoiced as an additional part in the warranty claim. costing \$0.53.</p> <p>⇒ Damage Code WPA6 066 000 2</p> | | |

Warranty processing

Scope 1-7: **Not relevant for this vehicle type.**

Scope 8: **Replacing engine data adhesive label**

- 911 Targa 4S (992)

| | | |
|--|---|--------------------------|
| Labor time: | | |
| Replacing engine data adhesive label | | Labor time: 54 TU |
| Required parts: | | |
| Model year 2020: | | |
| V04015001EF | Engine data identification plate | 1 piece |
| or | | |
| Model year 2021: | | |
| V04015001EG | Engine data identification plate | 1 piece |
| | | |
| PNA EMI 000 00* | Label – Recall Proof of Completion | 1 ea. |
| PNA 999 100 235* | Certificate - Recall Proof of Correction | 1 ea. |
| <p>* California dealers only:</p> <ul style="list-style-type: none"> • For warranty processing, enter the Part No. PNA EMI 000 00 with the designation "label" as a local part at US\$ 0.34 in the warranty claim. • For warranty processing, enter the Part No. PNA 999 100 235 with the designation "certificate" as a local part at US\$ 0.01 in the warranty claim. | | |
| Required materials: | | |
| WPA60000001** | Expendable item | 1 piece |
| <p>** For warranty processing, the Part No. WPA60000001 with the "Expendable item" designation can be invoiced as an additional part in the warranty claim. costing \$0.53.</p> <p>⇒ Damage Code WPA6 066 000 2</p> | | |

Warranty processingScope 1-8: **Not relevant for this vehicle type.**Scope 9: **Replacing engine data adhesive label**

- 911 Turbo (992)

| | | |
|--|---|--------------------------|
| Labor time: | | |
| Replacing engine data adhesive label | | Labor time: 36 TU |
| Required parts: | | |
| Model year 2020: | | |
| V04015001EJ | Engine data identification plate | 1 piece |
| or | | |
| Model year 2021: | | |
| V04015001EK | Engine data identification plate | 1 piece |
| PNA EMI 000 00* | Label – Recall Proof of Completion | 1 ea. |
| PNA 999 100 235* | Certificate - Recall Proof of Correction | 1 ea. |
| <p>* California dealers only:</p> <ul style="list-style-type: none"> For warranty processing, enter the Part No. PNA EMI 000 00 with the designation "label" as a local part at US\$ 0.34 in the warranty claim. For warranty processing, enter the Part No. PNA 999 100 235 with the designation "certificate" as a local part at US\$ 0.01 in the warranty claim. | | |
| Required materials: | | |
| WPA60000001** | Expendable item | 1 piece |
| <p>** For warranty processing, the Part No. WPA60000001 with the "Expendable item" designation can be invoiced as an additional part in the warranty claim. costing \$0.53.</p> <p>⇒ Damage Code WPA6 066 000 2</p> | | |

Warranty processing

Scope 1-9: **Not relevant for this vehicle type.**

Scope 10: **Replacing engine data adhesive label**

- 911 Turbo Cabriolet (992)

| | | |
|--|---|--------------------------|
| Labor time: | | |
| Replacing engine data adhesive label | | Labor time: 42 TU |
| Required parts: | | |
| Model year 2020: | | |
| V04015001EJ | Engine data identification plate | 1 piece |
| or | | |
| Model year 2021: | | |
| V04015001EK | Engine data identification plate | 1 piece |
| PNA EMI 000 00* | Label – Recall Proof of Completion | 1 ea. |
| PNA 999 100 235* | Certificate - Recall Proof of Correction | 1 ea. |
| <p>* California dealers only:</p> <ul style="list-style-type: none"> For warranty processing, enter the Part No. PNA EMI 000 00 with the designation "label" as a local part at US\$ 0.34 in the warranty claim. For warranty processing, enter the Part No. PNA 999 100 235 with the designation "certificate" as a local part at US\$ 0.01 in the warranty claim. | | |
| Required materials: | | |
| WPA60000001** | Expendable item | 1 piece |
| <p>** For warranty processing, the Part No. WPA60000001 with the "Expendable item" designation can be invoiced as an additional part in the warranty claim. costing \$0.53.</p> <p>⇒ Damage Code WPA6 066 000 2</p> | | |

Warranty processing

Scope 1-10: **Not relevant for this vehicle type.**

Scope 11: **Replacing engine data adhesive label**

- 911 Turbo S (992)

| | |
|--------------------------------------|--------------------------|
| Labor time: | |
| Replacing engine data adhesive label | Labor time: 36 TU |

| | | |
|--|---|---------|
| Required parts: | | |
| Model year 2020: | | |
| V04015001EL | Engine data identification plate | 1 piece |
| or | | |
| Model year 2021: | | |
| V04015001EM | Engine data identification plate | 1 piece |
| PNA EMI 000 00* | Label - Recall Proof of Completion | 1 ea. |
| PNA 999 100 235* | Certificate - Recall Proof of Correction | 1 ea. |
| <p>* California dealers only:</p> <ul style="list-style-type: none"> For warranty processing, enter the Part No. PNA EMI 000 00 with the designation "label" as a local part at US\$ 0.34 in the warranty claim. For warranty processing, enter the Part No. PNA 999 100 235 with the designation "certificate" as a local part at US\$ 0.01 in the warranty claim. | | |
| Required materials: | | |
| WPA60000001** | Expendable item | 1 piece |
| <p>** For warranty processing, the Part No. WPA60000001 with the "Expendable item" designation can be invoiced as an additional part in the warranty claim. costing \$0.53.</p> <p>⇒ Damage Code WPA6 066 000 2</p> | | |

Warranty processing

Scope 1-11: **Not relevant for this vehicle type.**

Scope 12: **Replacing engine data adhesive label**

- 911 Turbo S Cabriolet (992)

| | | |
|--------------------------------------|----------------------------------|--------------------------|
| Labor time: | | |
| Replacing engine data adhesive label | | Labor time: 42 TU |
| Required parts: | | |
| Model year 2020: | | |
| V04015001EL | Engine data identification plate | 1 piece |
| or | | |

| | | |
|--|---|---------|
| Model year 2021: | | |
| V04015001EM | Engine data identification plate | 1 piece |
| PNA EMI 000 00* | Label – Recall Proof of Completion | 1 ea. |
| PNA 999 100 235* | Certificate - Recall Proof of Correction | 1 ea. |
| <p>* California dealers only:</p> <ul style="list-style-type: none"> For warranty processing, enter the Part No. PNA EMI 000 00 with the designation "label" as a local part at US\$ 0.34 in the warranty claim. For warranty processing, enter the Part No. PNA 999 100 235 with the designation "certificate" as a local part at US\$ 0.01 in the warranty claim. | | |
| Required materials: | | |
| WPA60000001** | Expendable item | 1 piece |
| <p>** For warranty processing, the Part No. WPA60000001 with the "Expendable item" designation can be invoiced as an additional part in the warranty claim. costing \$0.53.</p> <p>⇒ Damage Code WPA6 066 000 2</p> | | |

Warranty processing

Scope 1-12: **Not relevant for this vehicle type.**

Scope 13: **Replacing engine data adhesive label**

- 911 Carrera GTS (992) model year 2021

| | | |
|--------------------------------------|---|--------------------------|
| Labor time: | | |
| Replacing engine data adhesive label | | Labor time: 36 TU |
| Required parts: | | |
| V04015001EN | Engine data identification plate | 1 piece |
| PNA EMI 000 00* | Label – Recall Proof of Completion | 1 ea. |
| PNA 999 100 235* | Certificate - Recall Proof of Correction | 1 ea. |

| | | |
|--|-----------------|---------|
| <p>* California dealers only:</p> <ul style="list-style-type: none"> For warranty processing, enter the Part No. PNA EMI 000 00 with the designation "label" as a local part at US\$ 0.34 in the warranty claim. For warranty processing, enter the Part No. PNA 999 100 235 with the designation "certificate" as a local part at US\$ 0.01 in the warranty claim. | | |
| <p>Required materials:</p> | | |
| WPA60000001** | Expendable item | 1 piece |
| <p>** For warranty processing, the Part No. WPA60000001 with the "Expendable item" designation can be invoiced as an additional part in the warranty claim. costing \$0.53.</p> <p>⇒ Damage Code WPA6 066 000 2</p> | | |

Warranty processing

Scope 1-13: **Not relevant for this vehicle type.**

Scope 14: **Replacing engine data adhesive label**

- 911 Carrera GTS Cabriolet (992) model year 2021

| | | |
|--|---|---------|
| <p>Labor time:</p> <p>Replacing engine data adhesive label Labor time: 42 TU</p> | | |
| <p>Required parts:</p> | | |
| V04015001EN | Engine data identification plate | 1 piece |
| PNA EMI 000 00* | Label – Recall Proof of Completion | 1 ea. |
| PNA 999 100 235* | Certificate - Recall Proof of Correction | 1 ea. |
| <p>* California dealers only:</p> <ul style="list-style-type: none"> For warranty processing, enter the Part No. PNA EMI 000 00 with the designation "label" as a local part at US\$ 0.34 in the warranty claim. For warranty processing, enter the Part No. PNA 999 100 235 with the designation "certificate" as a local part at US\$ 0.01 in the warranty claim. | | |
| <p>Required materials:</p> | | |
| WPA60000001** | Expendable item | 1 piece |

** For warranty processing, the **Part No. WPA60000001** with the "Expendable item" designation can be invoiced as an **additional part** in the warranty claim. costing \$0.53.

⇒ **Damage Code WPA6 066 000 2**

Important Notice: Technical Bulletins issued by Porsche Cars North America, Inc. are intended only for use by professional automotive technicians who have attended Porsche service training courses. They are written to inform those technicians of conditions that may occur on some Porsche vehicles, or to provide information that could assist in the proper servicing of a vehicle. Porsche special tools may be necessary in order to perform certain operations identified in these bulletins. Use of tools and procedures other than those Porsche recommends in these bulletins may be detrimental to the safe operation of your vehicle, and may endanger the people working on it. Properly trained Porsche technicians have the equipment, tools, safety instructions, and know-how to do the job properly and safely. Part numbers listed in these bulletins are for reference only. The work procedures updated electronically in the Porsche PIWIS diagnostic and testing device take precedence and, in the event of a discrepancy, the work procedures in the PIWIS Tester are the ones that must be followed.

© 2023 Porsche Cars North America, Inc.