



TEAM TIP

Release Date: June 21, 2023

SLI

Communication #: T-23-06-01

Model Year(s): 2022+

— Confidential and Proprietary —

VERSION: R01 (June 21, 2023)

IMPORTANT

If you are working with a printed copy, please verify you have the most current version of this document.

SUBJECT: HEATED / COOLED SEATS

PURPOSE

This team tip is to notify dealers of diagnostic and repair information for the heated and cooled seats that has been added to the service manual.

Certain LED light fault patterns on the seat control buttons can result from an issue within the seat. Additionally, recent claims have resulted from a poor connection in the seat bottom. To correct this concern, the seat bottom should be disassembled, and connections inspected. If the locking tab does not stay fully engaged during a push/pull test, tape can be wrapped around the locking tab to prevent movement.

AFFECTED MODELS

MODEL YEAR	MODELS
2022+	All Slingshot Models

OPERATION OVERVIEW / TROUBLESHOOTING

NOTICE

Seat Back: The seat back can **ONLY** be serviced as an assembly and should not be disassembled. It contains the seat control module, fan, and heating element for the seat back.

Seat Bottom: The seat bottom can be disassembled following the outlined instructions to access the switch and heating element connectors for inspection. The internal components are not individually serviceable.

OPERATION OVERVIEW

- HEATED / COOLED SEAT: During normal operation, the red and blue seat LED lights will be dimly lit when the vehicle is running and will become brighter when activated with the seat control buttons

The seat will power down automatically due to low source voltage if operation is attempted while the engine is not running – Seat LED lights will not be lit until several seconds after no current draw is detected.

IMPORTANT

When checking operation of the seat, the engine **must be running** and producing the proper battery voltage.

SEAT BUTTON OPERATION

Heating Feature:

1. From the seat OFF position - Press the “plus button” to start **low** heating mode.
 - The “plus button” will glow red brighter once in heating mode.
 - The “minus button” backlight will be OFF.
2. Press the “plus button” a second time for **medium** heating mode.
3. Press the “plus button” a third time for **high** heating mode.
4. Press the “minus button” to go back to **medium** heating mode.
5. Press the “minus button” a second time to go back to **low** heating mode.
6. Press the center button to turn **off** heating mode at any time.
7. From the seat OFF position - Hold down the “plus button” for 4 seconds to advance directly to **high** heating mode.

Cooling Feature:

1. From the seat OFF position - Press the “minus button” to start **low** cooling mode.
 - The blue backlit “minus button” will glow brighter once in cooling mode.
 - The “plus button” backlight will be OFF.
2. Press the “minus button” a second time for **medium** cooling mode.
3. Press the “minus button” a third time for **high** cooling mode.
4. Press the “plus button” to go back to **medium** cooling mode.
5. Press the “plus button” a second time to go back to **low** cooling mode.
6. Press the center button to turn **off** cooling mode at any time.
7. From the seat OFF position - Hold down the “minus button” for 4 seconds to advance directly to **high** cooling mode.

DIAGNOSIS

Before proceeding, visually inspect the seat for abnormal wear / damage, unusual sounds / smells, seat button LED light patterns, blocked airflow passages.

With the Slingshot still powered on, start the engine and verify proper battery voltage is being produced.

HEATED / COOLED SEATS

- *If the issue is related to the cooling function, proceed to steps 1–3.*
 - *If the issue is related to the heating function, proceed to steps 4–6.*
1. With the Slingshot still powered on and the engine running – Turn the seat setting on high cooling mode for driver and passenger (if equipped) positions for 15 minutes or until a fault is observed.
 2. If a fault is observed, follow the seat button LED fault patterns troubleshooting guide
 3. If no faults patterns are observed, the seat is operating correctly
 4. With the Slingshot still powered on and the engine running – Turn the seat setting on high heating mode for driver and passenger (if equipped) positions for 15 minutes or until a fault is observed.
 5. If a fault is observed, follow the seat button LED fault patterns troubleshooting guide.
 6. If no fault patterns are observed, the seat is operating correctly.

TROUBLESHOOTING

The LED fault patterns will identify which position of the seat is experiencing an issue (driver button LED fault pattern indicates an issue with the driver position, passenger button LED fault pattern indicates an issue with the passenger position, driver and passenger button LED fault pattern indicates an issue with the seat assembly)

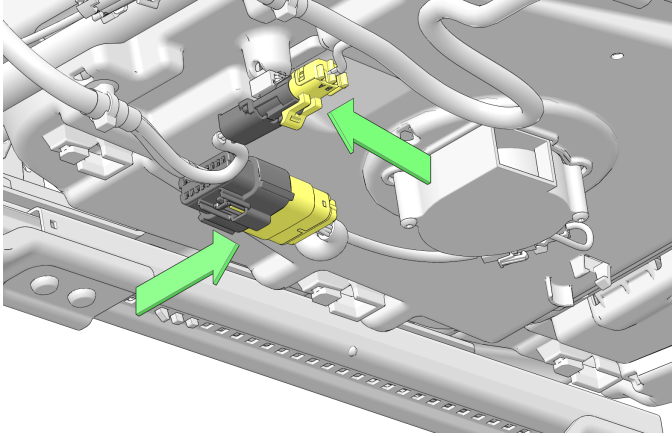
PROBLEM	FAILURE MODE	DIAGNOSTICS STEPS
Seat Turns OFF - No Blinking LED's	Low Voltage Threshold	Power cycle the ignition and verify if the concern is repeatable
		Ensure the engine is running and maintaining the proper battery voltage while operating the seat
		Verify proper voltage and ground at the seat to chassis connector
		Inspect, swap, and/or replace the individual seat back or bottom
Red LED Blinking	Temperature Change Rate Incorrect / Not Within Threshold	Power cycle the ignition and verify if the concern is repeatable
		Inspect the seat bottom connectors following the outlined instructions below
		Inspect, swap, and/or replace the individual seat back or bottom
Blue LED Blinking	Fan Voltage Insufficient or Operation Fault	Power cycle the ignition and verify if the concern is repeatable
		Verify seat base fan connection is fully connected – Accessible via underside of seat
		Inspect, swap, and/or replace the individual seat back or bottom
Red & Blue LED's Alternating Blinking	Software Error	Power cycle the ignition and verify if the concern is repeatable
		Replace the seat back assembly (module)
Red & Blue LED's Blinking Together	Open Circuit or Electrical Short	Power cycle the ignition and verify if the concern is repeatable
		Verify proper voltage and ground at the seat to chassis connector
		Inspect the seat bottom connectors following the outlined instructions below

SEAT BOTTOM CONNECTOR INSPECTION

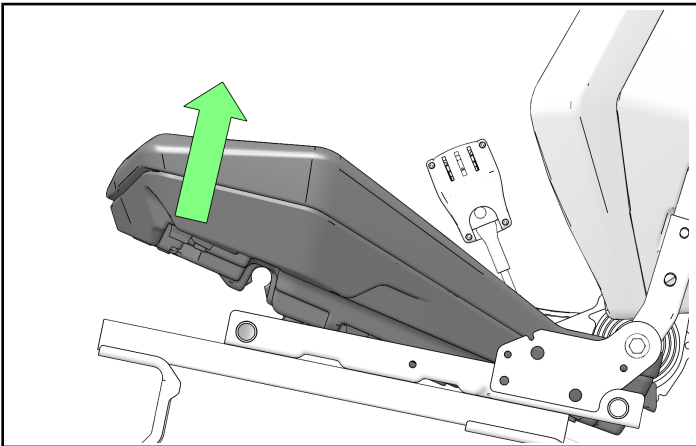
NOTICE

The seat bottom can be disassembled to access the heating element and switch connectors.

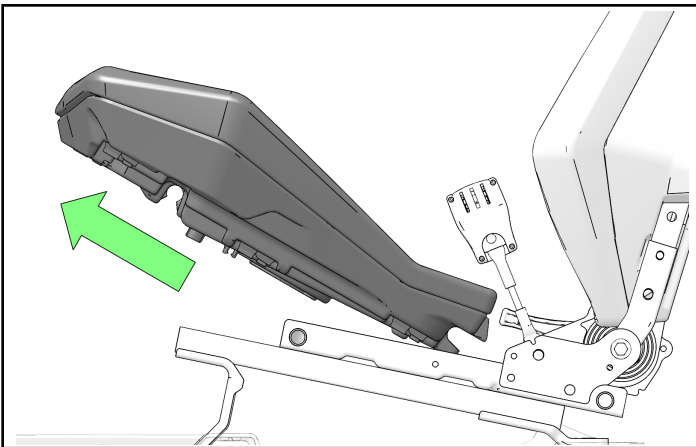
1. Tilt seat back forward and disconnect the seat bottom to seat back and chassis to seat connectors.



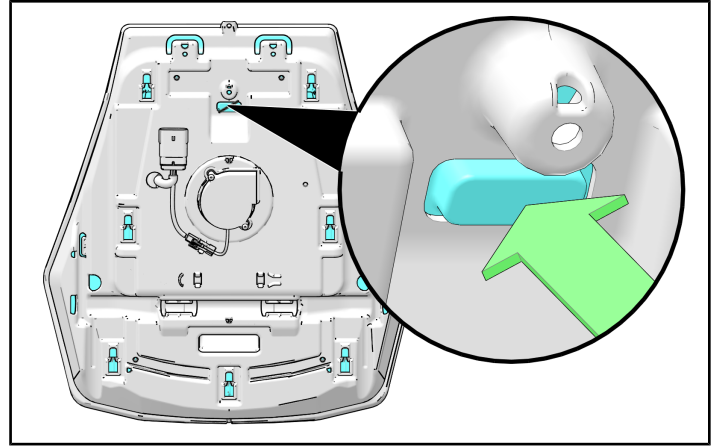
2. Lift up on the front of the seat base to disengage.



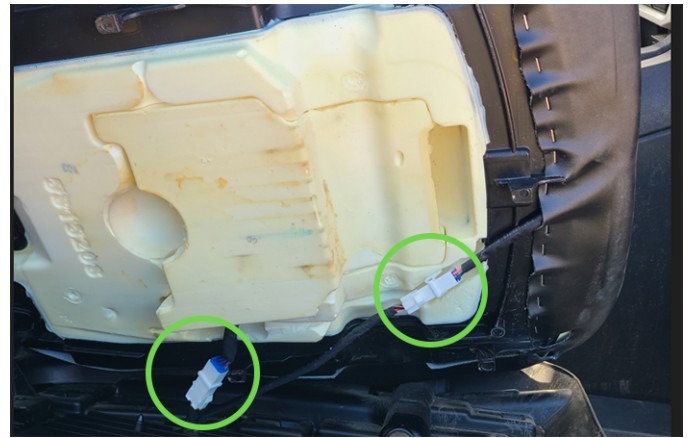
3. Pull the seat base forward to remove.



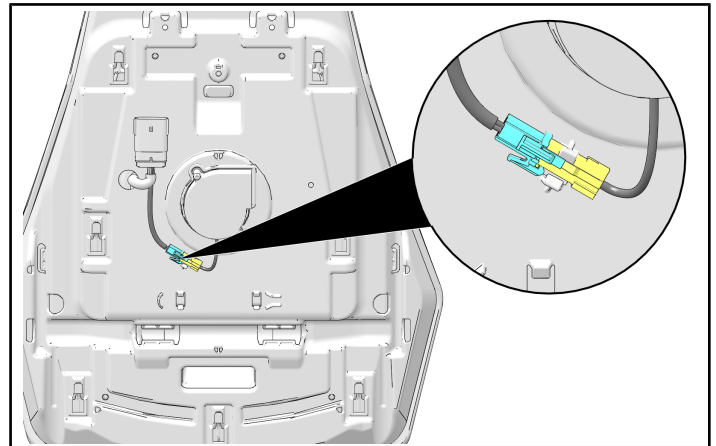
4. To remove, press the locking tab and slide the foam cushion forward to disengage the lower panel from the cushion.



5. Locate the switch and heating element connectors on the bottom of the seat base.



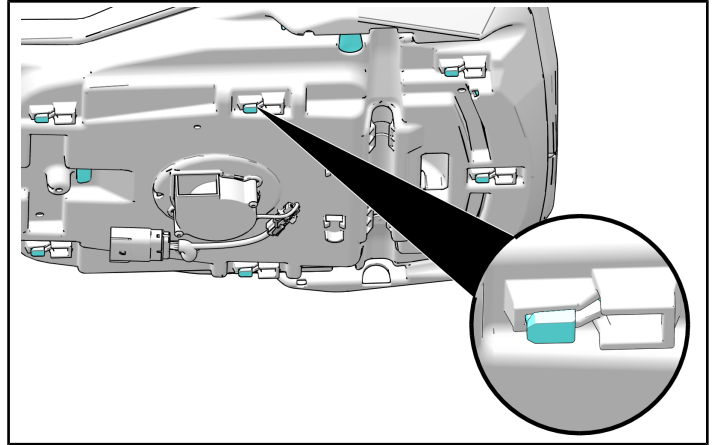
6. Locate the fan motor connection.



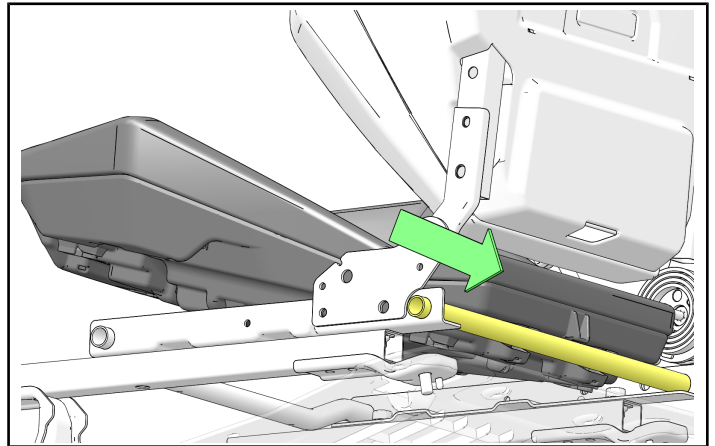
7. Inspect the connections visually and make sure the locking tab is fully engaged as shown.



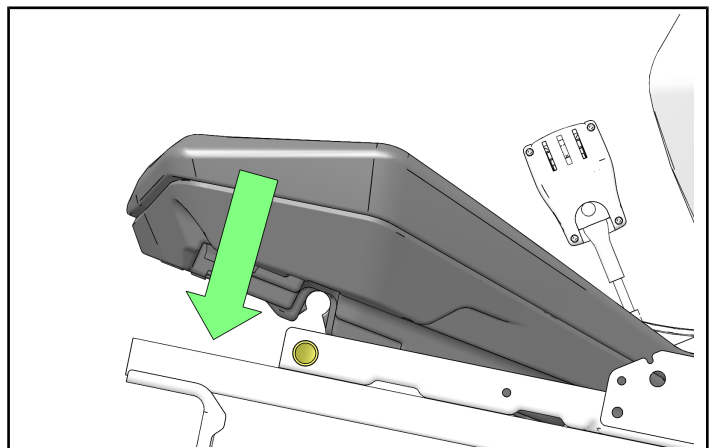
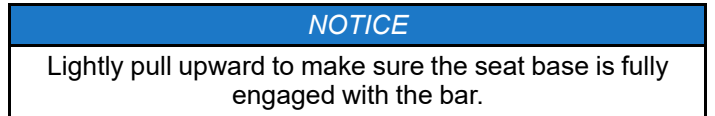
9. Align the seat base with the cushion. Slide the foam cushion backward until the locking tab is fully engaged.



10. Install the seat base until the engagement recess is seated on the base bar.



11. Press down on the seat base until it snaps into place over the base bar.



12. Verify proper operation of the heated and cooled seat.

⚠ WARNING

Verify electrical connector is properly seated and locked in place by listening for an audible “click” when pressing into place. Pull gently on electrical connector to make sure a proper connection has been made.

8. To secure the locking tab in position, install tape around the locking side of the tab of the connector as shown.

