



## **SERVICE BULLETIN**

**ALLISON 3000 SERIES TRANSMISSION PLUG  
INSPECTION**

**RELIABILITY INSPECTION BULLETIN**

**GROUP: 0-GENERAL  
SB NO : T0520  
DATE: 6/14/2023  
REF HMM SCB-001-23**

## **SUBJECT VEHICLES:**

2022 and 2023 model year Hino L-Series Conventional vehicles equipped with a Cummins B6.7 engine that were assembled at the Mineral Wells, West Virginia USA assembly plant.

***Note: Refer to the appropriate Vehicle Identification Number (VIN) list to determine vehicle eligibility.***

## **OVERVIEW:**

Inspection of the passenger side transmission for the presence of the correct plug.

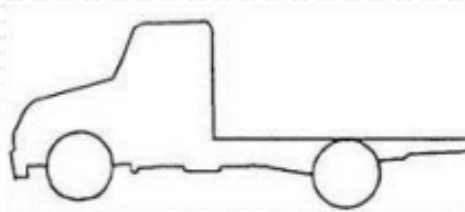
## **BEFORE YOU BEGIN:**

- Read and understand all instructions and procedures before you begin the work.
- Read and follow all WARNINGS and NOTICES set forth in this publication.
- Park the vehicle on a flat, level and solid surface.
- Place the gear shift lever in "Neutral" or "Park".
- Apply the parking brake firmly and confirm parking brake activation.
- Place wheel chocks in front of and behind all the wheels to prevent the vehicle from moving.



## VEHICLE PREPARATION:

1. Park the vehicle on a flat, level and solid surface.



2. Confirm the engine is stopped, the ignition switch is in the off (LOCK) position, and the key is removed.



3. Apply the parking brake.



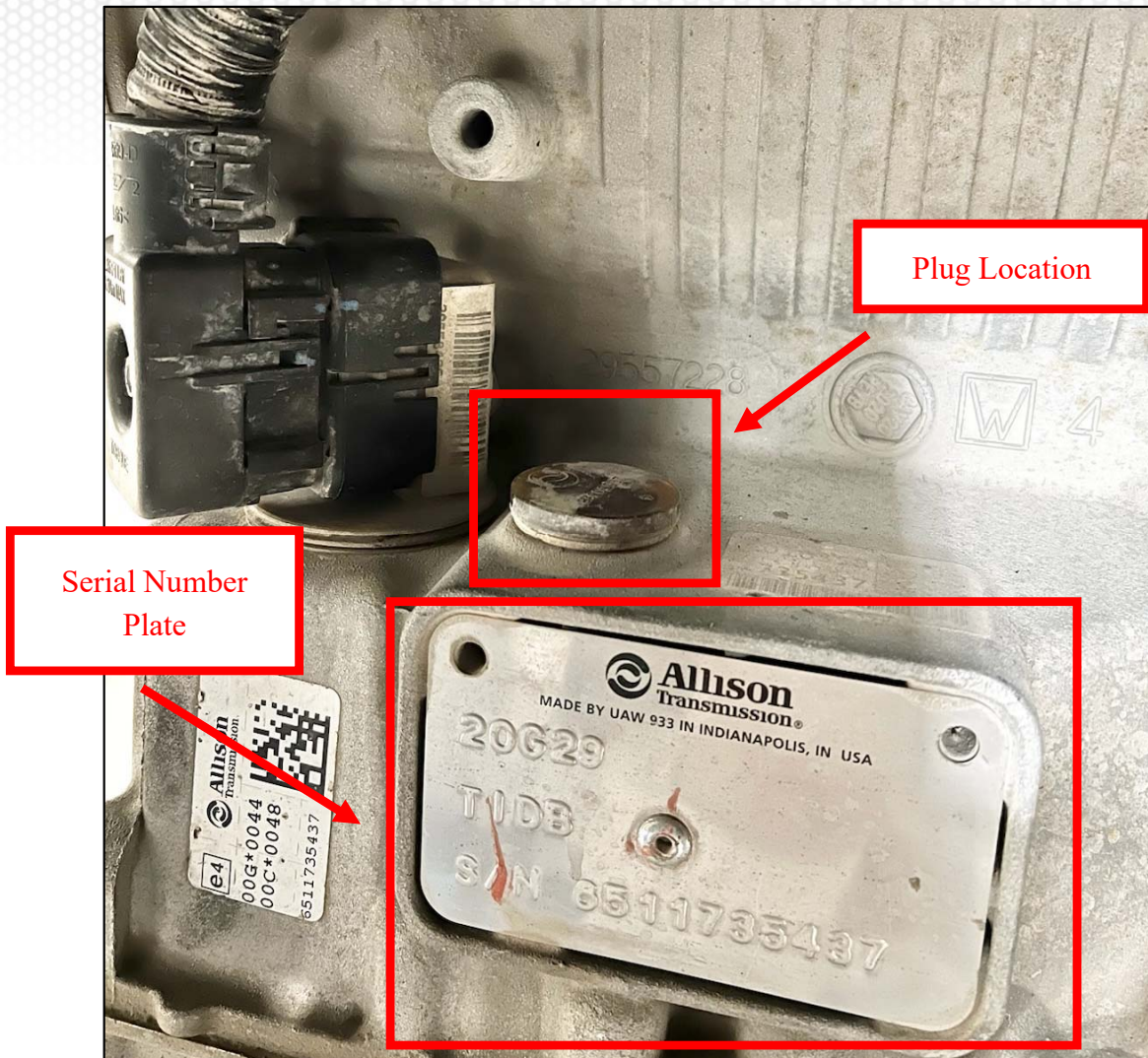
4. Chock all of the wheels.





## INSPECTION PROCEDURE:

1. On the passenger rear side of the transmission, capture a picture of the entire transmission serial number plate including the plug like the image below.



2. If the transmission has a permanent plug installed as in the above image, no further action is needed.

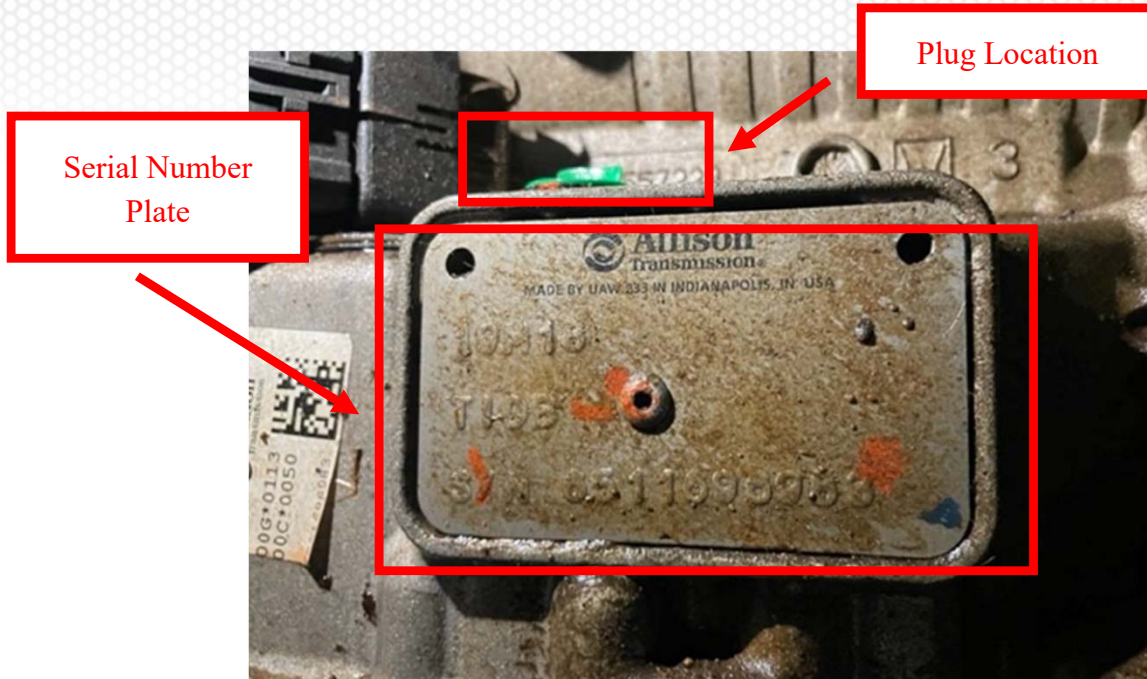
File the warranty claim using the instructions in the Claim Application section at the end of this document.

**Note: The warranty claim must have the image taken in step 1 attached to be paid.**



3. If the image taken in step 1 has a green plastic plug installed in the transmission like the images below, create a TechAssist case and attach the picture(s).

TechAssist will provide further direction.



### ***CLAIM APPLICATION:***

- *Reimbursable in accordance with the terms and policies of the Hino limited warranties.*

### **3000 Series Allison Transmission Plug Inspection:**

- a) Campaign Number: T0520
- b) Labor charge: 1.0 hr
- c) Warranty code: 23119
- d) Trouble code: 40
- e) Operation code: 23150AOT
- f) Original failed part: 9999999999

