



TECHNICAL SERVICE BULLETIN

Classification:

DA22-008B

Reference:

NTB23-011B

Date:

June 22, 2023

"FORWARD DRIVING AIDS BLOCKED" MESSAGE ON INSTRUMENT PANEL DURING SNOWY/ICY DRIVE WEATHER CONDITIONS, WITH DTC C2582-97 STORED IN LASER/RADAR CONTROL UNIT

This bulletin has been amended. See AMENDMENT HISTORY on the last page.
Please discard previous versions of this bulletin.

APPLIED VEHICLES: 2021-2023 Rogue (T33)

IF YOU CONFIRM

The message "Forward Driving Aids Blocked" is displayed on the Instrument Panel during snowy/icy drive weather conditions, with DTC C2582-97 (Distance Sensor) stored in the LASER/RADAR control unit,

AND

Salt residue or snow/ice is present between the inside surface of the Front Bumper Fascia and front surface of the Distance Sensor.

HINT: Refer to **Flow Chart** on page 2.

- This bulletin applies only if the customer experienced the "Forward Driving Aids Blocked" message during snowy/icy drive weather conditions.
- This bulletin does not apply if any other type of contamination (e.g., dirt, debris, or rain) is on the Distance Sensor surface. In that instance, refer to NTB019-033 and the ESM for further diagnostic information. **Do not apply the Service Kit in PARTS INFORMATION.**

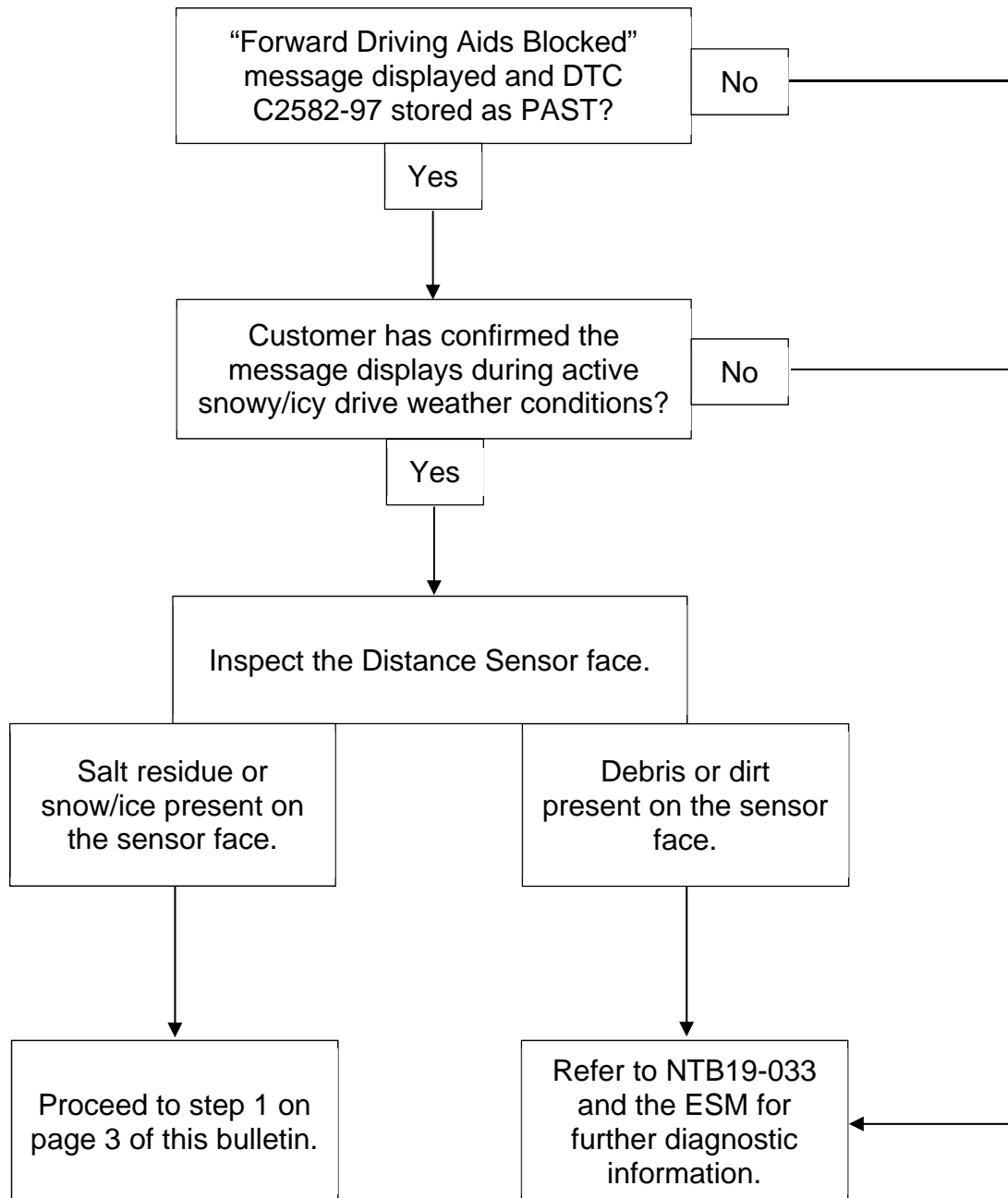
ACTION

Install the Distance Sensor Bracket & Grill Tape Service Kit following the **SERVICE PROCEDURE** starting on page 3.

IMPORTANT: The purpose of **ACTION** (above) is to give you a quick idea of the work you will be performing. You **MUST** closely follow the entire **SERVICE PROCEDURE** as it contains information that is essential to successfully completing this repair.

Bulletins are intended for use by qualified technicians, not 'do-it-yourselfers'. Qualified technicians are properly trained individuals who have the equipment, tools, safety instruction, and know-how to do a job properly and safely. **NOTE:** If you believe that a described condition may apply to a particular vehicle, **DO NOT** assume that it does. See your Nissan dealer to determine if this applies to your vehicle.

Flow Chart



SERVICE PROCEDURE

1. Remove the Front Grille.
 - Refer to the ESM: **BODY EXTERIOR, DOORS, ROOF & VEHICLE SECURITY > EXTERIOR > REMOVAL AND INSTALLATION > FRONT GRILLE > Removal and Installation**
2. Wipe off salt residue/snow/ice from the surfaces of the Distance Sensor and the back side of the Nissan emblem.
3. Snap the Distance Sensor Bracket (Figure 1) onto the Distance Sensor.
 - See **PARTS INFORMATION**.

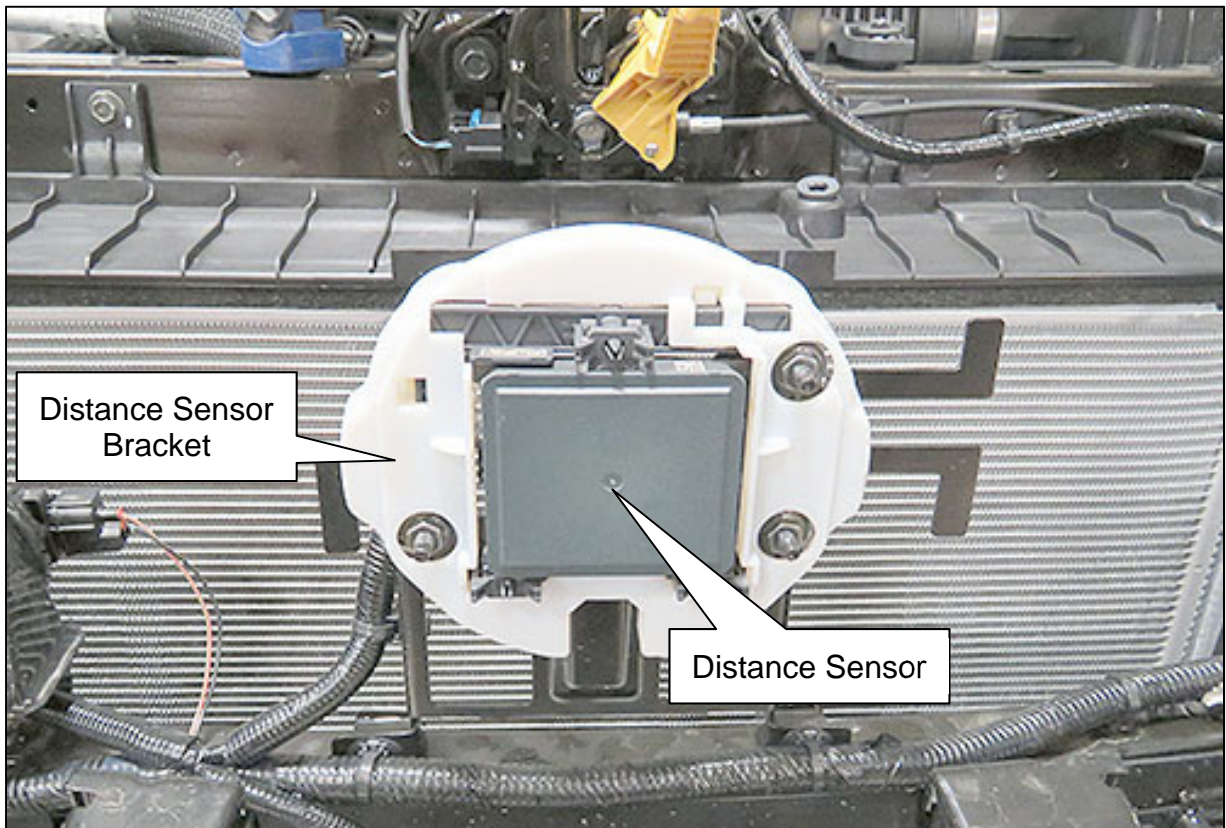


Figure 1

Refer to steps 4-7 to attach two (2) Foam Seals (Figure 2) to the inside of the Nissan emblem, on the Grille, to close the Grille spaces (Figure 3).

HINT: The Foam Seals are left and right, and are shown in Figure 2 on the sides and orientation that they will be installed.

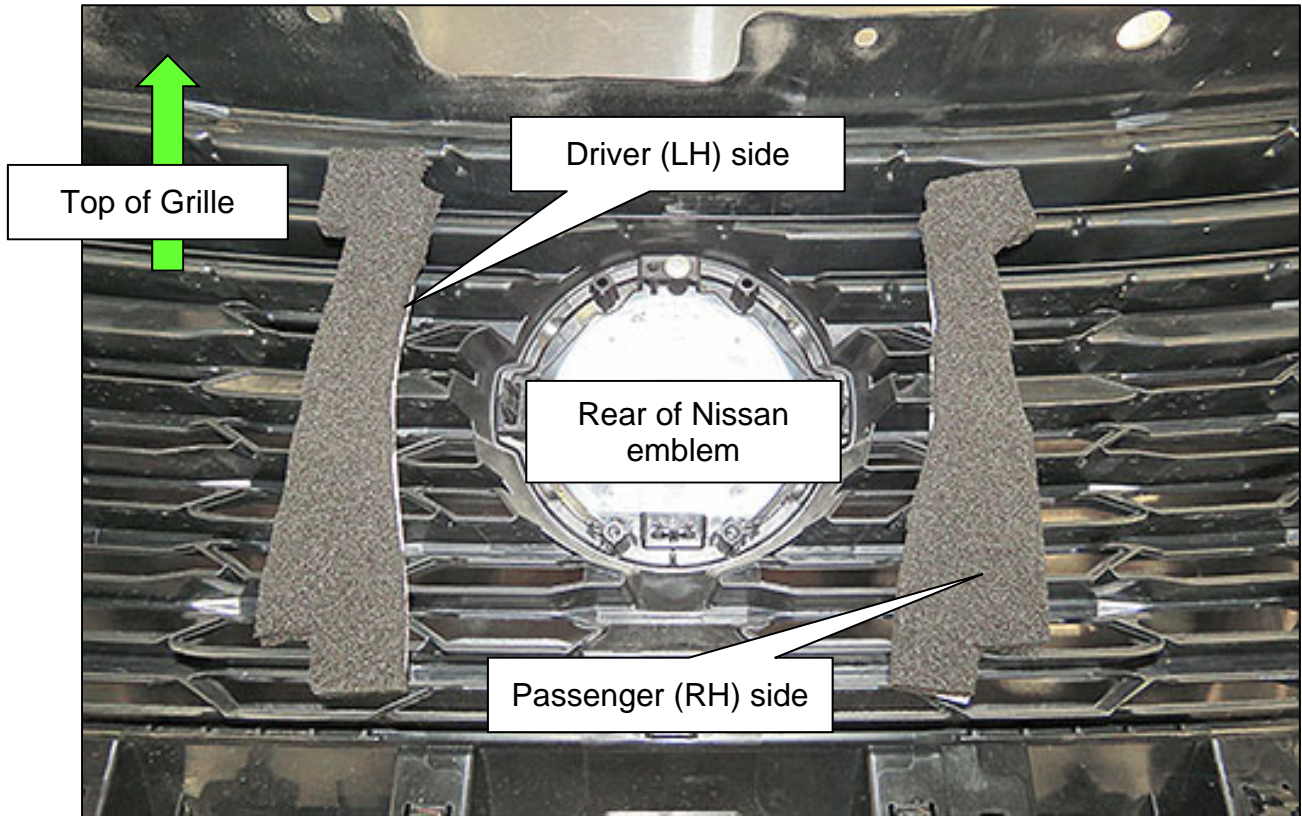


Figure 2

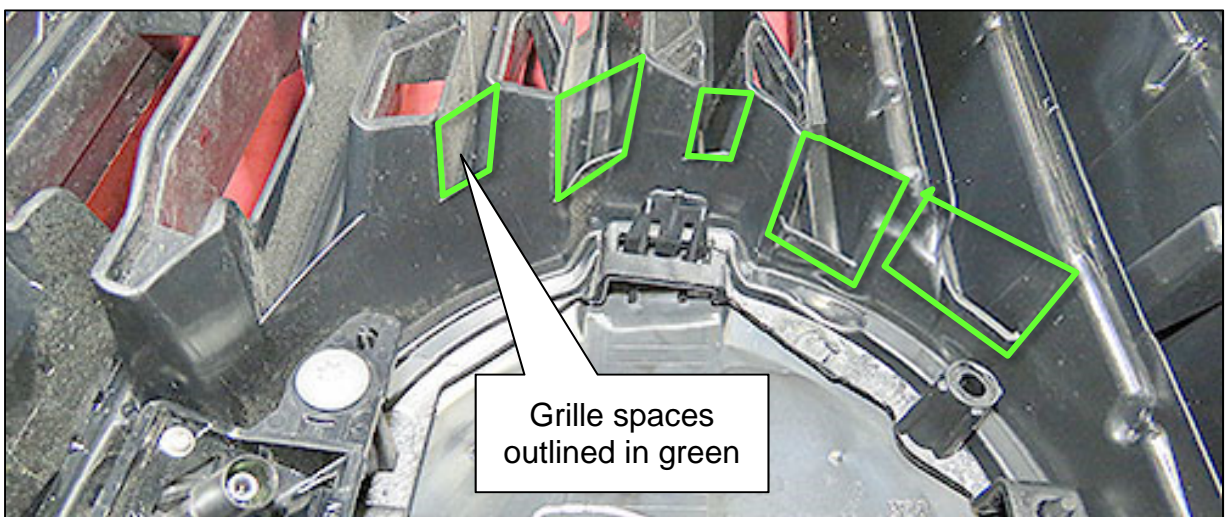


Figure 3

HINT: The left side is shown in the following Figures. The right side is similar.

4. Remove the self-adhesive backing from the left side Foam Seal.
 - Install the Foam Seals one at a time.

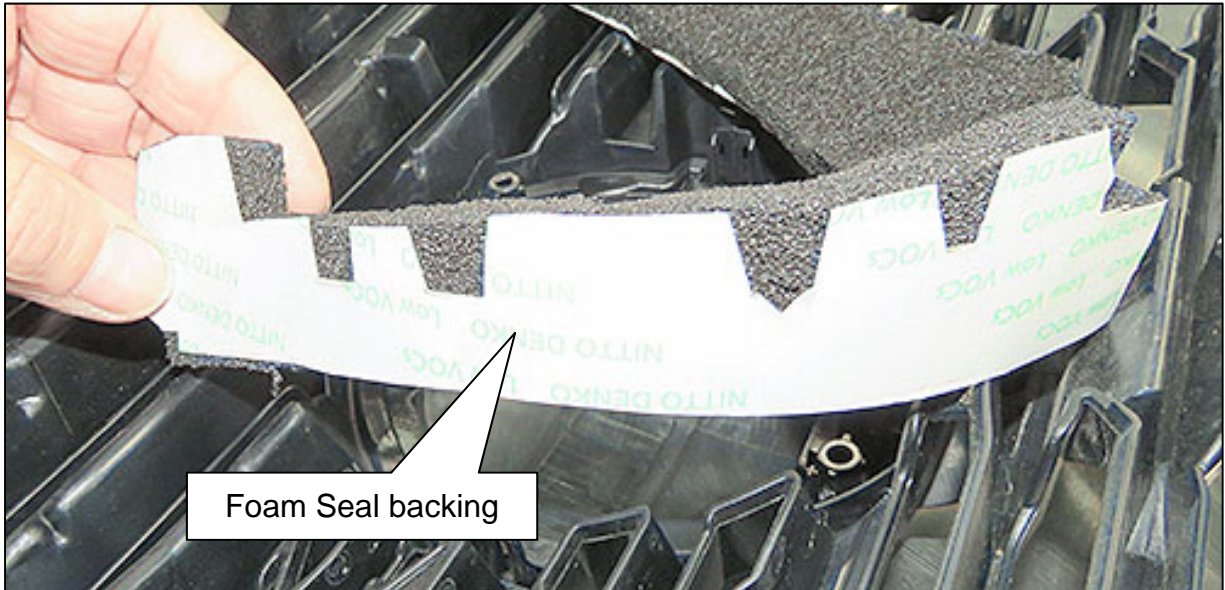


Figure 4

5. Start attaching the Foam Seal at the top of the Nissan emblem.

IMPORTANT: The top of both the left and right Foam Seals must be touching each other when installed.

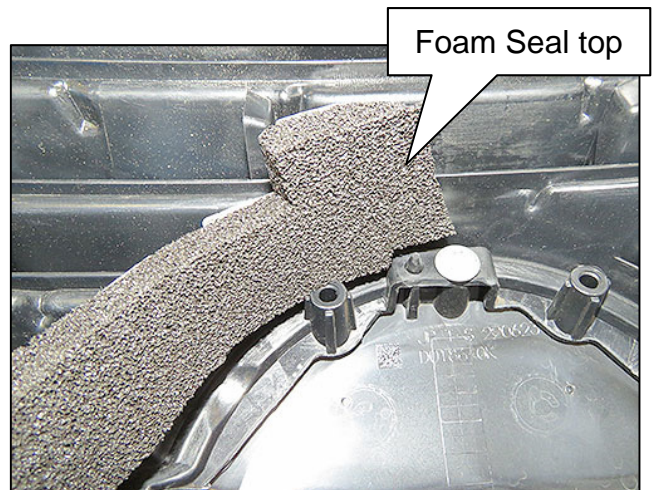


Figure 5

6. Continue attaching the foam as shown in Figure 6 and Figure 7 on page 6.

HINT: Use the self-adhesive cut-outs to help align the Foam Seal.

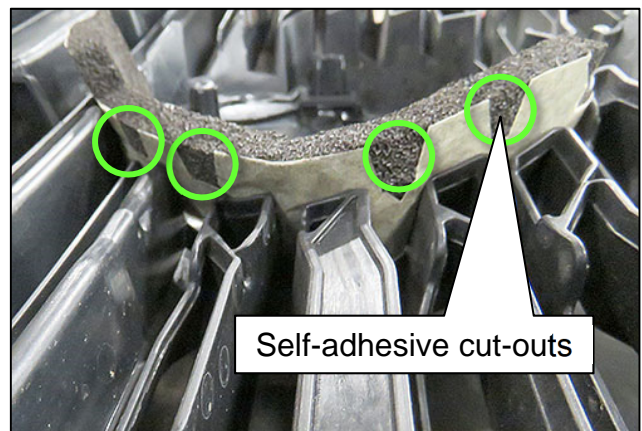


Figure 6

- Foam Seal notch should be level with the end of the last grille space.

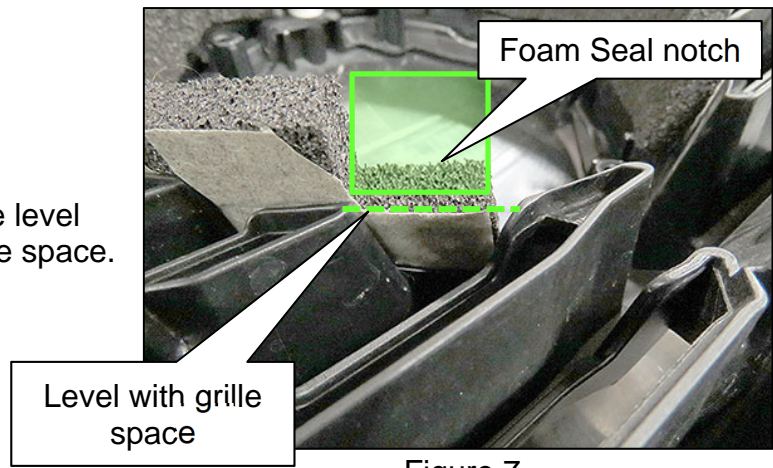


Figure 7

7. Refer to steps 4-6 on page 5 to install the right side Foam Seal.
 - Both Foam Seals must seal against each other at the top.**HINT:** Figure 8 shows both Foam Seals installed.

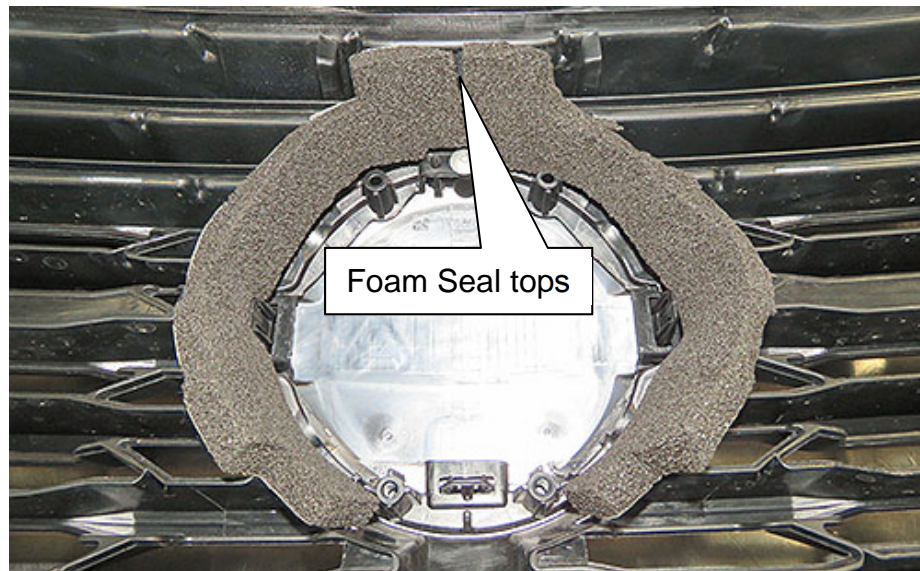


Figure 8

8. Fold the tops of the two Foam Seals over together, as shown in Figure 9.



Figure 9

9. Reinstall the Front Grille.

- Refer to the ESM: **BODY EXTERIOR, DOORS, ROOF & VEHICLE SECURITY > EXTERIOR > REMOVAL AND INSTALLATION > FRONT GRILLE > Removal and Installation**

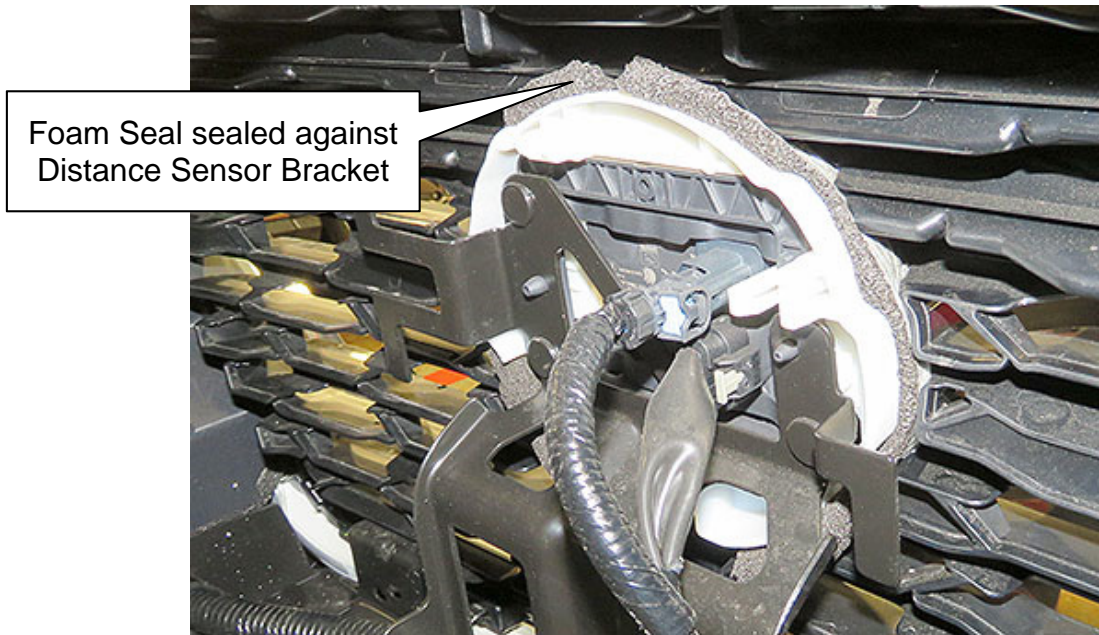


Figure 10

10. With C-III plus, perform **Erase All DTCs**.

11. Confirm that DTC C2582-97 no longer stores in the LASER/RADAR control unit.

- If DTC C2582-97 continues to store in the LASER/RADAR control unit, refer to the ESM for diagnostic information not supported by this bulletin.

PARTS INFORMATION

| DESCRIPTION | PART NUMBER | QUANTITY |
|--|-------------|----------|
| BRKT-FR RADAR, MAIN (Distance Sensor Bracket) | 285U2-6RF0A | 1 |
| BRKT-FR RADAR, TAPE, RH (Foam Seal) | 285U2-6RF0C | 1 |
| BRKT-FR RADAR, TAPE, LH (Foam Seal) | 285U2-6RF0D | 1 |

CLAIMS INFORMATION

Submit a Primary Part (PP) type line claim using the following claims coding:

| DESCRIPTION | PFP | OP CODE | SYM | DIA | FRT |
|-------------------------------------|-----|---------|-----|-----|-----|
| Install Bracket and Grille Tape Kit | (1) | BX8CAA | ZE | 32 | 0.4 |

OR

| DESCRIPTION | PFP | OP CODE | SYM | DIA | FRT |
|---|-----|---------|-----|-----|-----|
| Install Bracket and Grille Tape Kit With AVM | (1) | BX8DAA | ZE | 32 | 0.8 |

- (1) Reference the electronic parts catalog and use the Distance Sensor (28437-*****) as the Primary Failed Part (**PFP**).

AMENDMENT HISTORY

| PUBLISHED DATE | REFERENCE | DESCRIPTION |
|------------------|------------|-----------------------------|
| January 26, 2023 | NTB23-011 | Original bulletin published |
| April 19, 2023 | NTB23-011A | Republished to include NNA |
| June 22, 2023 | NTB23-011B | Title and pages 1-3 revised |