

## NFI Bunk Wiring Inspection

**Service Category** Service

**Section** Function Group 375

**Technician Skill Level** A

**Market** North America

### Applicability

**VOLVO**

Years	Models
2021-2022	VN

### Introduction

Certain NFI Volvo trucks could experience an issue with the APU wiring under the bunk. The wiring under the bunk could break loose from its mounting clips causing it to rub. Follow the instructions below to inspect and ensure all wiring under the bunk area is properly secured with clips or fasteners.

### Production Change Information

This bulletin applies to vehicles built within the specified production changes below.

Brand	Engine	Emission Level	Starting Build Date	Ending Build Date
Volvo	D13	EM-USA21	2-March-2020	22-November-2021

### Warranty Information

<b>This repair is covered by an authorized Service Program. Reimbursement is obtained through the normal claim handling process.</b>		
Claim Type (used only when uploading from the Dealer Bus. Sys.)		<b>B</b>
Main Labor Code	Description	Hours
1720-16-09-01	Campaign, General (X5)	0.5
<b>Causal Part</b>	<b>22663853</b>	
<b>SCC Authorization Code</b>	<b>S3367</b>	
<b>Expiration Date</b>	<b>July 31, 2024</b>	

## NFI Bunk Wiring Inspection

---

### Parts Information

Part Numbers	Part Names	Quantity
22663853	Harness	As needed

### Required Tools & Equipment

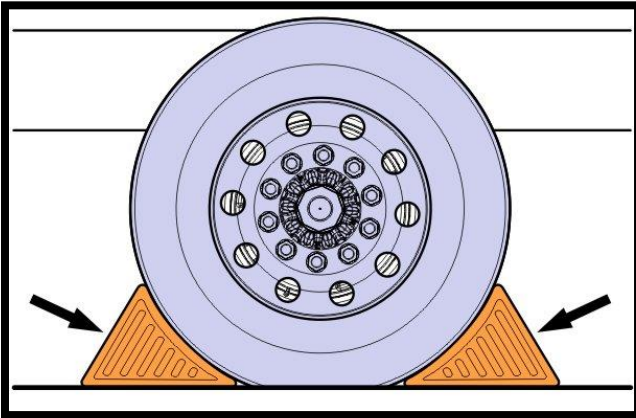
- None

### Calibration Information

- None

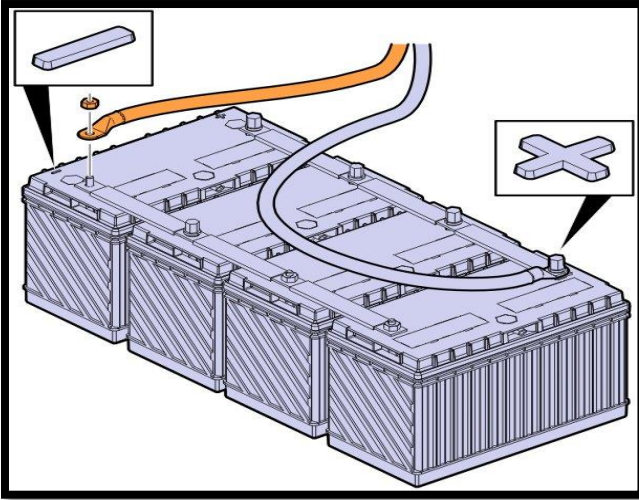
## Repair Procedure

1. Park the vehicle on a level surface.
2. Apply the parking brake.
3. Place the gear lever in neutral.
4. Install the wheel chocks.

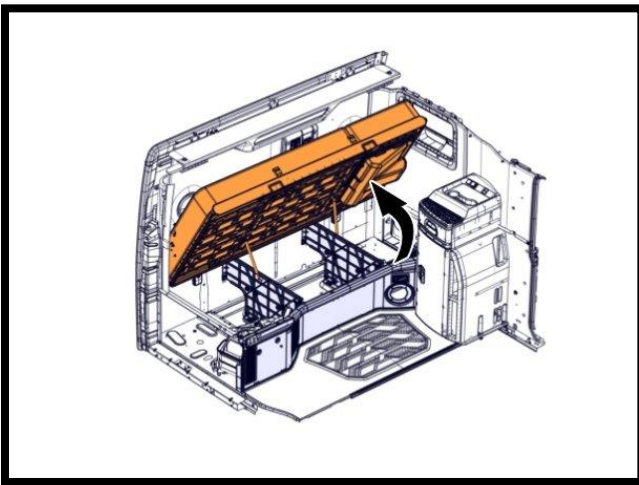


5. Disconnect the cable from the negative terminal.

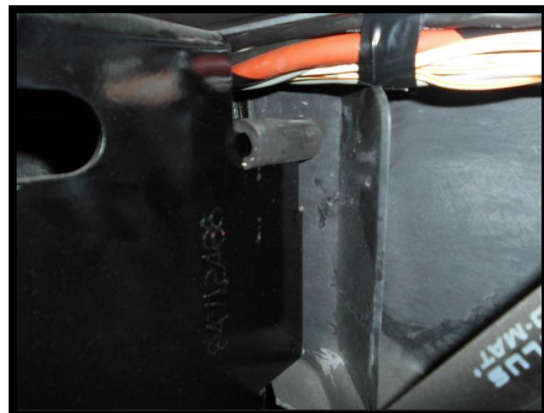
## NFI Bunk Wiring Inspection



6. Raise the bunk.



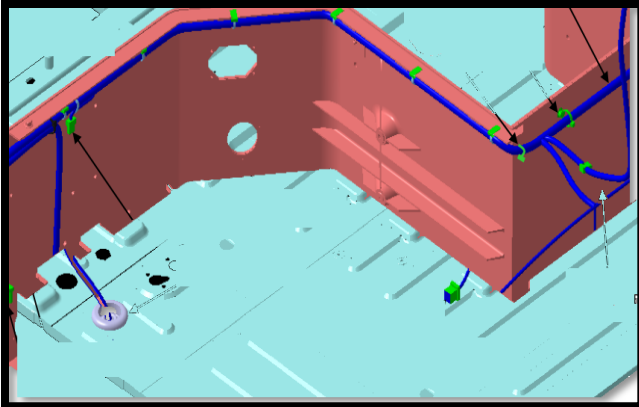
7. Inspect the bunk harness to ensure the harness is routed correctly and secured with clip. The harness should not be loose and hanging down or rubbing. (Examples of loose or bad routing)



## NFI Bunk Wiring Inspection

---

- a) If damage is found to the harness during the inspection **Stop** and notify Alexander Leclear [alexander.leclear@volvo.com](mailto:alexander.leclear@volvo.com) before proceeding.
  - b) If the harness is not damaged, follow the instructions below to ensure the harness is routed and secured correctly.
8. Ensure the harness is routed according to the drawing below.



9. The harness should be attached to the bunk rail with clips and cable ties.



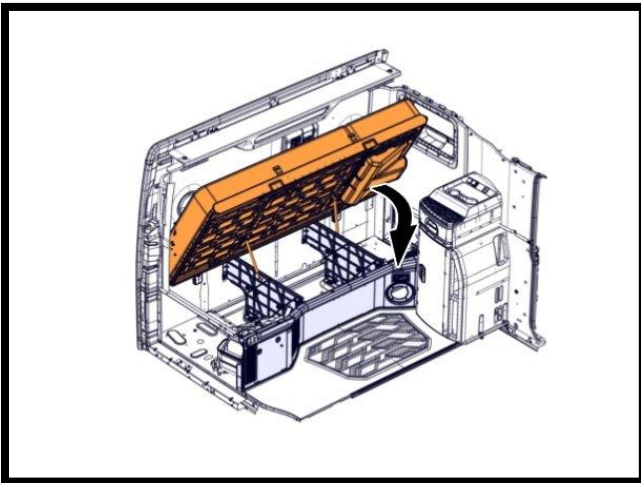
10. Make sure that the harness is not rubbing on any metal when passing through holes.

## NFI Bunk Wiring Inspection

---



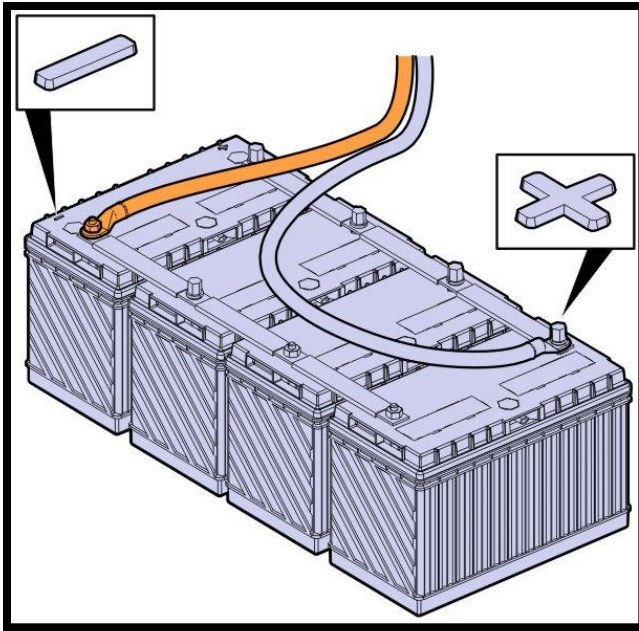
11. Lower the bunk.



12. Connect the battery cable to the negative terminal.

## NFI Bunk Wiring Inspection

---



13. Remove the wheel chocks.

