



## Technical Service Information Bulletin

### S-Series™

#### 2.0 Hydraulic Hose Clamping

**Date:** July 24, 2023

**Bulletin Name:** FDM-TSIB-043

**Model:** Oshkosh S-Series

**Units Affected:** 2.0 Front Discharge Mixers

### Purpose

This bulletin provides information on updating hydraulic hose clamping below the cab to match current production. Engineering recommends changing out the front STAUFF clamp using the following procedure. The second STAUFF clamp can be changed out using this procedure if desired.

### Notice

- This bulletin should be read and understood in its entirety before performing this procedure.
- All procedures outlined in the bulletin must be performed by skilled service personnel. Refer to the product service manual for descriptions of maintenance procedures.

#### SAFETY NOTICE

**Perform your company's Lockout/Tagout procedure. If your company does not have a Lockout/Tagout procedure, follow OSHA 1910.147 and 1910.146 Confined Space as appropriate.**

#### SAFETY NOTICE

**Use appropriate Personal Protective Equipment (PPE) as required by your company.**

### Tools and Equipment Required

Customer to supply:

- Hand tools
- Torque wrench (foot pounds)

### Parts Required\*

Item	Part Number	Description	Qty.
1	2492HX	SCR, CAP, HEX 0.31-18 X 3.00 G5 ZY	1
2	0120276	WASH, FLT 0.31 X 0.69 X 0.06 ZY HDN	1
3	A000C231	CLIP, CSHN 0.69 IN ST VY	1
4	A000C244	CLIP, CSHN 1.13 IN ST VY	1
5	1333510	NUT, FLG, LKDT, 0.31-18 G5 ZY	1

\* Items 1-5 are for only changing out the front clamp.

### Procedure

#### Lockout/Tagout

1. Place unit on a flat surface, engage parking brake, chock truck tires, and perform your company's Lockout/Tagout procedure. If your company does not have a Lockout/Tagout procedure, follow OSHA 1910.147 and 1910.146 Confined Space as appropriate.
2. The vehicle's BATTERY DISCONNECT switch is located on the left-hand side of the battery box. Use the battery disconnect switch when performing any maintenance so the vehicle cannot accidentally be started.
  - a. Turn the battery disconnect switch (Figure A, Item 1) counterclockwise so the hole on the switch aligns with the hole in the bracket (Figure A, Item 2).

- b. Install the safety lockout device ring (Figure B, Item 1) through the holes on the battery disconnect switch and the bracket.
- c. Install a padlock (Figure B, Item 2) onto the safety lockout device ring, lock it, and put the key in your pocket. If more than one person is working on the vehicle, each person must install his or her own padlock.

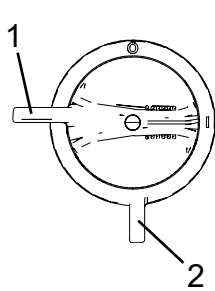


Figure A

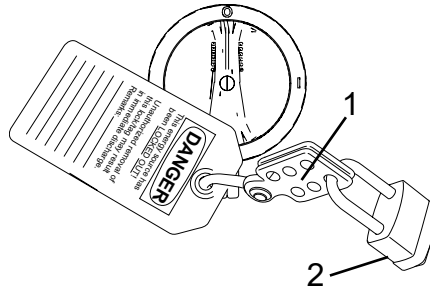


Figure B

### **STAUFF Clamp Removal**

3. Locate STAUFF clamp on inside front of right-hand frame rail. See Figure 1.
4. Loosen and remove screw and nut securing STAUFF clamp to frame rail. See Figure 1. Locknut and screw will not be reused.

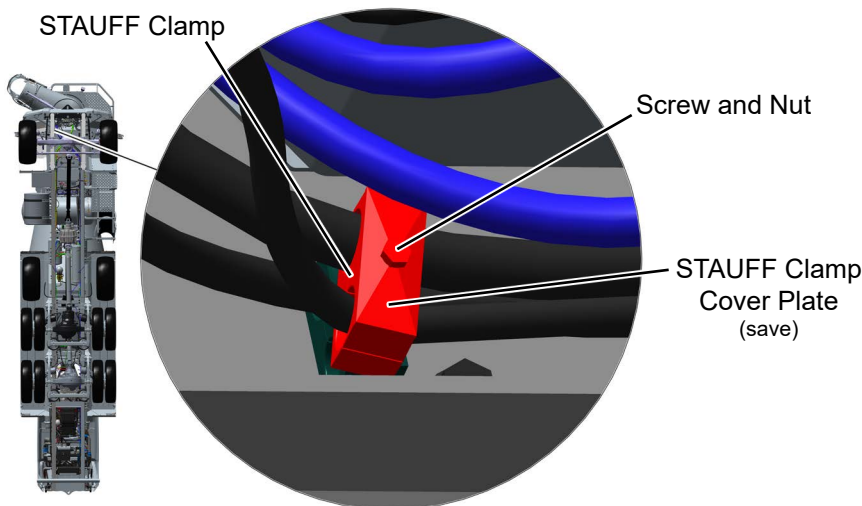


Figure 1

5. Remove outer STAUFF clamp and clamp cover plate. See Figure 2. Save cover plate for reinstallation, STAUFF clamp removed will not be reused.

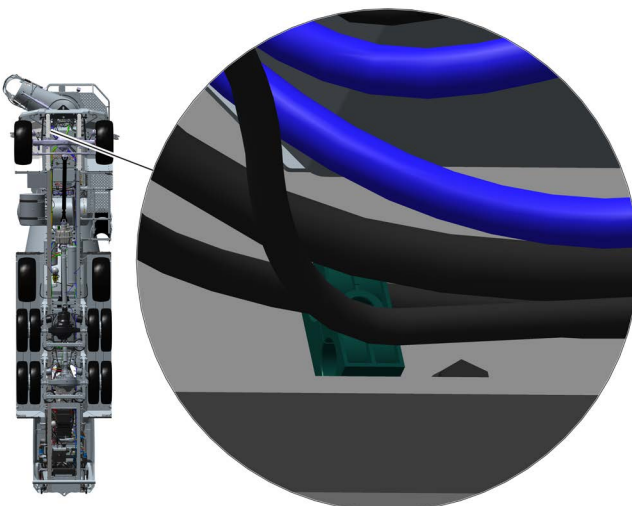
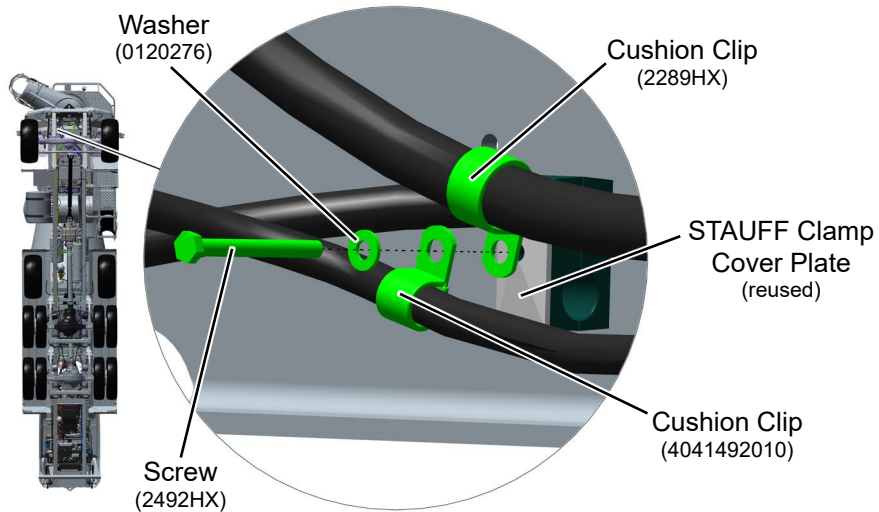


Figure 2

6. Inspect hydraulic hoses where STAUFF clamp was removed for wear. Replace hose(s) as needed.

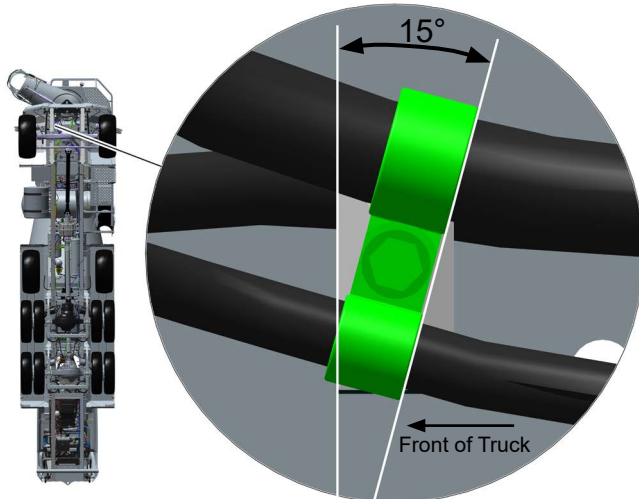
### ***Cushion Clip Installation***

7. Install cover plate removed in Step 5 on remaining STAUFF clamp. See Figure 3. The cover plate will be slightly oversized when reinstalled.
8. Install 1.13 inch cushion clip (2289HX) on upper hydraulic hose #3126. See Figure 3 for clip orientation.
9. Install 0.69 inch cushion clip (4041492010) on lower hydraulic hose #3043. See Figure 3 for clip orientation.
10. Install flat washer (0120276) on 3.0 inch screw (2492HX).
11. Install 3.0 inch screw with flat washer through cushion clips, STAUFF clamp, and frame rail. See Figure 3 for installation order.
12. Install lock nut (1333510) on screw installed in Step 11. Hand tighten screw and nut, do not final tighten.



*Figure 3*

13. Position cushion clips as shown in Figure 4. Make sure upper hose #3126 does not contact bottom of cab. Make sure lower hose #3043 does not contact right-hand steer gear. Adjust clip orientations as necessary.



*Figure 4*

14. Final tighten mounting hardware to 9 ft. lbs.

15. Add zip tie to hoses #3043 and #3104 as required to keep hydraulic hoses from contacting steering gear. See Figure 5 for zip tie location.

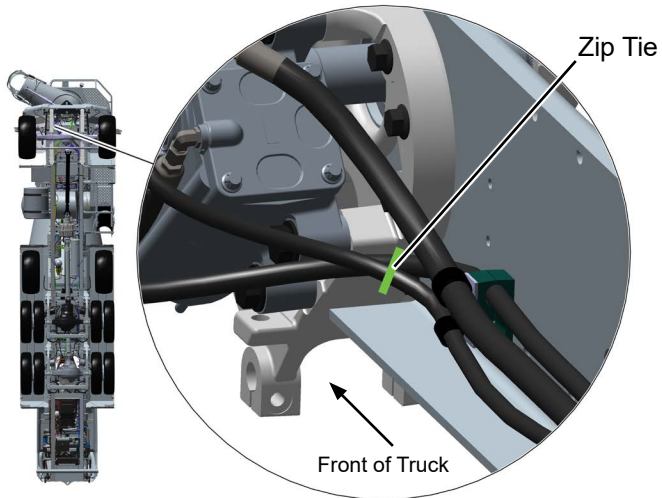


Figure 5

16. Make sure hose #3043 is correctly orientated at the chute manifold. See Figure 6.

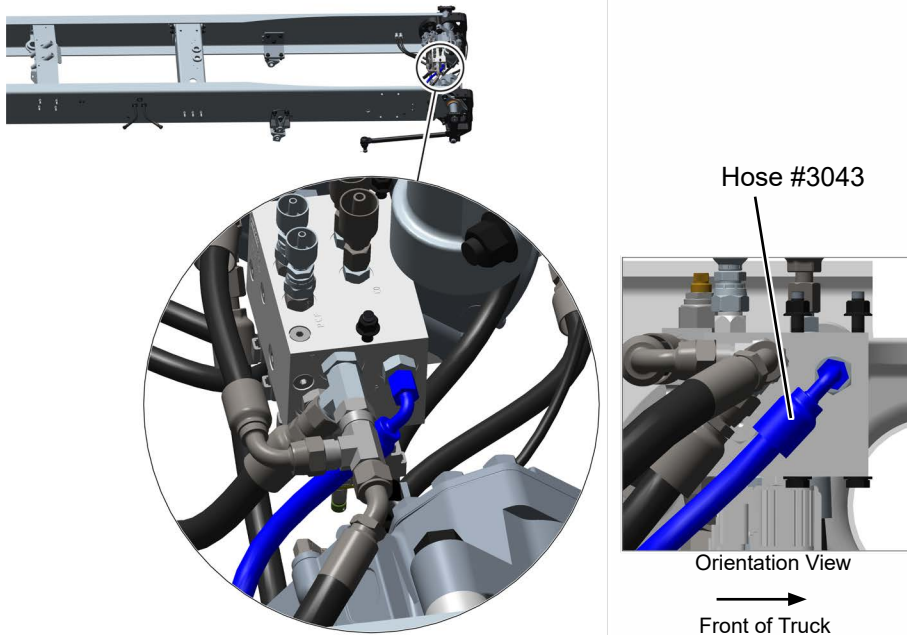


Figure 6

17. If changing out the second STAUFF clamp a 3.25 inch screw is required. Perform Steps 3 - 12 and Step 14 to change out the second STAUFF clamp. Orientation of the second clip stack is vertical, see Figure 7.

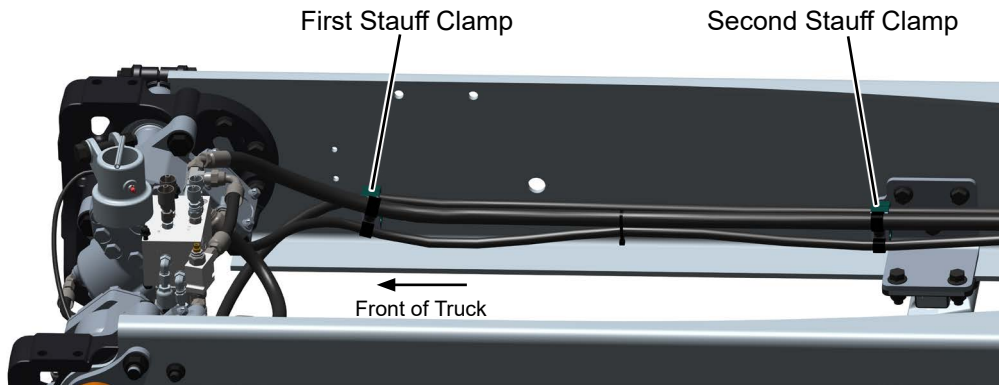


Figure 7

18. Remove lockout/tagout and tire chocks.

### Continuous Improvement:

The change included in this document is part of the McNeilus Continuous Improvement Process.

*McNeilus's quality policy is providing customer satisfaction through innovative products, dedicated service, and a constant focus on continuous improvement.*



(888) 686-7278

[www.streetsmartparts.com](http://www.streetsmartparts.com)