



Technical Service Bulletin

SUBJECT: VEHICLE IDENTIFICATION & ON-VEHICLE RADIO TRANSMISSION INFORMATION – SERVICE MANUAL REVISION			No: TSB-23-00-018
			DATE: August 2023
			MODEL: iMiEV
CIRCULATE TO:	<input type="checkbox"/> GENERAL MANAGER	<input checked="" type="checkbox"/> PARTS MANAGER	<input checked="" type="checkbox"/> TECHNICIAN
<input checked="" type="checkbox"/> SERVICE ADVISOR	<input checked="" type="checkbox"/> SERVICE MANAGER	<input checked="" type="checkbox"/> WARRANTY PROCESSOR	<input type="checkbox"/> SALES MANAGER

PURPOSE

This TSB provides information for the General Section of the applicable Service Manual General section:

- Vehicle Identification
- Precautions Before Service for On-Vehicle Radio Transmission Equipment

AFFECTED VEHICLES

2016 i-MiEV

AFFECTED SERVICE MANUAL

- 2016 i-MiEV Service Manual

PROCEDURE

Please use the following chart as a guide to replace the indicated pages in the affected Service Manuals, Group 00, General.

Applicable manual	Pub. No.	Contents
2016 i-MiEV Service Manual	MSCD-018B-2016	Replace and insert the Service Manual pages with pages 2-5 found in this bulletin.



Copyright 2023, Mitsubishi Motors North America, Inc.

The information contained in this bulletin is subject to change. For the latest version of this document, go to the Mitsubishi Dealer Link, MEDIC, or the Mitsubishi Service Information website (www.mitsubishitechinfo.com).

GROUP 00

GENERAL

CONTENTS

VEHICLE IDENTIFICATION	00-2	GENERAL DATA AND SPECIFICATIONS	
VEHICLE IDENTIFICATION NUMBER (VIN) PLATE		00-3
.....	00-2		
		PRECAUTIONS BEFORE SERVICE.	00-4
		PRECAUTIONS FOR INSTALLATION OF ON-VEHICLE RADIO TRANSMISSION EQUIPMENT.....	00-4

 <Added>

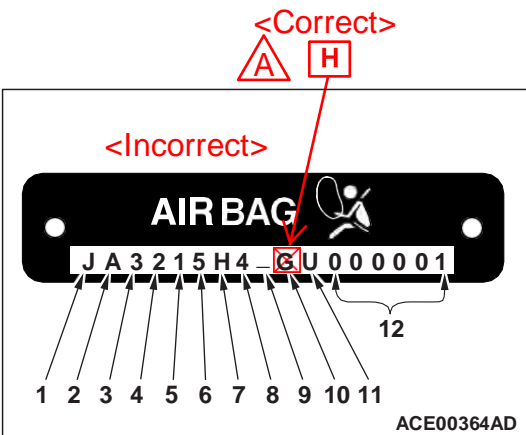
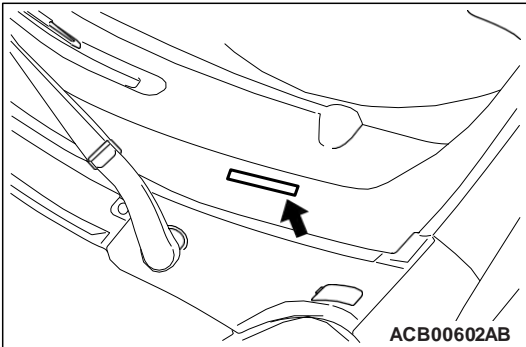
VEHICLE IDENTIFICATION

VEHICLE IDENTIFICATION NUMBER PLATE

M1001005503297

VEHICLES IDENTIFICATION NUMBER LOCATION

The vehicle identification number (VIN) plate is located on a plate attached to the left top side of the instrument panel.



CODE CHART

No.	Item	Content	
1	Country	J	Japan
2	Make	A	Mitsubishi motors corporation
3	Vehicle type	3	Passenger car
4	Others	2	Driver, passenger and side curtain air bags
5	Line	1	i-MiEV
6	Price class	5	PREMIUM
7	Body	H	5 door-hatch back
8	Electrical motor	4	49 kW (Y51)
9	Check digits*	0, 1, 2, 3, -----, X	
10	Model year	7	2017 year <Incorrect>
11	Plant	U	Mizushima
12	Serial number	000001 to 999999	

NOTE: *: Check digit means a single number, or letter X, used to verify the accuracy of transcription of vehicle identification number.

VEHICLE IDENTIFICATION NUMBER LIST

VEHICLES FOR USA

VIN (Except sequence number)	Brand	Electric power	Model code
JA3215H4- U <Incorrect>	MITSUBISHI i-MiEV	49 kW	HA4WGLDDL2M

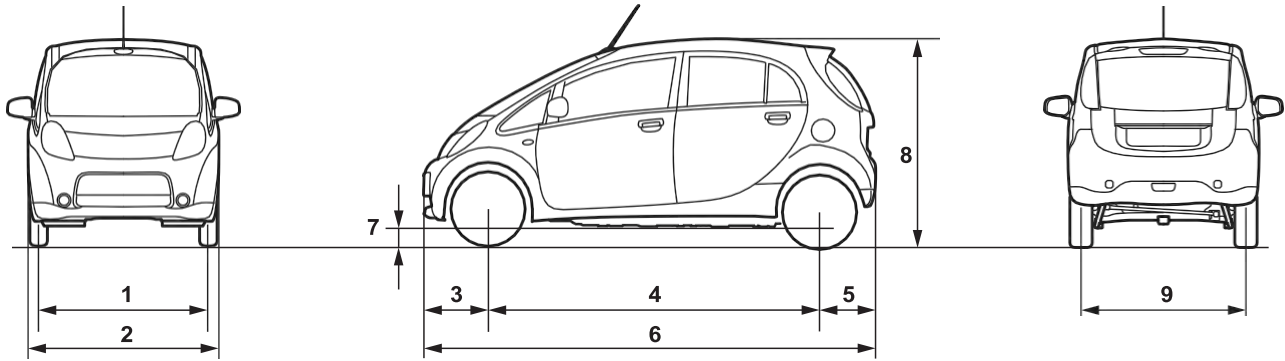
VEHICLES FOR CANADA

VIN (Except sequence number)	Brand	Electric power	Model code
JA3215H4- U <Incorrect>	MITSUBISHI i-MiEV	49 kW	HA4WGLDDL3M

<Correct>
H A

GENERAL DATA AND SPECIFICATIONS

M1001000909748



ACB00725AF

Item		HA4WGLDDL2M	HA4WGLDDL3M	
Vehicle dimension mm (in)	Tread-front	1	1,420 (55.9)	1,420 (55.9)
	Overall width	2	1,585 (62.4)	1,585 (62.4)
	Overhang-front	3	570 (22.4)	570 (22.4)
	Wheelbase	4	2,550 (100.4)	2,550 (100.4)
	Overhang-rear	5	555 (21.8)	555 (21.8)
	Overall length	6	3,675 (144.7)	3,675 (144.7)
	Ground clearance	7	155 (6.1)	155 (6.1)
	Overall height (unladen)	8	1,615 (63.6)	1,615 (63.6)
	Tread-rear	9	1,380 (54.3)	1,380 (54.3)
Vehicle weight kg (lb)	Curb weight	Without full optional parts	1,148 (2,530)	1,148 (2,530)
		With full optional parts	1,151 (2,537)	1,155 (2,546)
	Gross vehicle weight rating		1,510 (3,329)	1,510 (3,329)
	Gross axle weight rating-front		675 (1,488)	675 (1,488)
	Gross axle weight rating-rear		890 (1,962)	890 (1,962)
Seating capacity		4	4	
Traction battery	Type	Lithium ion battery	Lithium ion battery	
	Total voltage V	330	330	
	Total electric energy kWh	16	16	
Electric motor	Model No.	Y51	Y51	
	Type	Permanent magnet synchronous motor	Permanent magnet synchronous motor	
	Rated output kW	35	35	
	Max. output kW/rpm	49/4,000 – 8,800	49/4,000 – 8,800	
	Max. torque N·m/rpm	196/0 – 300	196/0 – 300	
Transmission	Model code	F1E1A	F1E1A	
	Type	Without shifting function	Without shifting function	
Turning radius m (ft)		4.7 (15.41)	4.7 (15.41)	

PRECAUTIONS BEFORE SERVICE

PRECAUTIONS FOR INSTALLATION OF ON-VEHICLE RADIO TRANSMISSION EQUIPMENT

The computers (control unit) for various on-vehicle electronic equipment are provided with sufficient protective measures against external radio wave interference. However, because the on-vehicle radio transmission equipment may affect adversely the computers (control unit), pay attention to the following precautions for installation.

- Install radio transmission equipment and antenna (including coaxial cables) 200 mm (7.9 inches) or more away from the computers (control unit) for on-vehicle electronic equipment.
- Because radio wave is radiated from the coaxial cables of the antenna for radio transmission equipment, do not route the cables in parallel with the vehicle wiring harness.
- Install only radio transmission equipment with the frequencies, output, and radio wave types described in the table.

FREQUENCY, OUTPUT, AND RADIO WAVE TYPE OF THE RADIO TRANSMISSION EQUIPMENT

Frequency (MHz)	Maximum output power (W)	Modulation
3.5	50	CW, FM, AM, SSB
7		
14		
21		
28		
50		
144		
430		
1,260	2	

- Install the antenna for radio transmission equipment only to the position shown in the figure.

