

## Field campaign

<b>Topic</b>	Side glass measurement check and software update for the rear door control modules - 00BB and 00BC (SC23/23)
<b>Market area</b>	Australia E04 Bentley rest Asia and Australia (6E04),China 796 VW Import Comp. Ltd (Vico), Beijing (6796),Germany E02 Bentley rest Europe (6E02),Japan E03 Bentley Japan (6E03),United Arab Emirates E06 Bentley Middle East and Africa (6E06),United Kingdom E01 Bentley UK (6E01),United States E05 Bentley USA and rest America (6E05)
<b>Brand</b>	Bentley
<b>Transaction No.</b>	2071249/1
<b>Campaign number</b>	EC88
<b>Note</b>	
<b>Type</b>	
<b>US code</b>	

## Vehicle data

### New Continental GTC

#### Sales types

Type	MY	Brand	Designation	Engine code	Gearbox code	Final drive code
3S4*	2019	E		*	*	*
3S4*	2020	E		*	*	*
3S4*	2021	E		*	*	*
3S4*	2022	E		*	*	*
3S4*	2023	E		*	*	*

#### Chassis numbers

Manufacturer	Filler	Type	Filler	MY	Factory	From	To	Prod from	Prod to
SCB	*	*	*	K	C	074300	078470		
SCB	*	*	*	L	C	075455	083991		
SCB	*	*	*	M	C	085020	090679		
SCB	*	*	*	N	C	090891	098559		
SCB	*	*	*	N	C	001056	004287		
SCB	*	*	*	P	C	005040	008460		

### New Continental GT

#### Sales types

Type	MY	Brand	Designation	Engine code	Gearbox code	Final drive code
3S3*	2019	E		*	*	*
3S3*	2020	E		*	*	*
3S3*	2021	E		*	*	*
3S3*	2022	E		*	*	*
3S3*	2023	E		*	*	*

#### Chassis numbers

Manufacturer	Filler	Type	Filler	MY	Factory	From	To	Prod from	Prod to
SCB	*	*	*	K	C	071942	074086		
SCB	*	*	*	L	C	075171	084521		
SCB	*	*	*	M	C	084714	090679		
SCB	*	*	*	N	C	090879	098495		
SCB	*	*	*	N	C	001036	004627		
SCB	*	*	*	P	C	005085	010363		

# Documents

Document name
master.xml
sc2323vinlist.pdf

---

## Notes



### Technical background

Software update is available for the left and right hand rear door control modules - Diagnostic address 00BB Driver side and 00BC Passenger side

The software eliminates the rear window short drop function

### Remedy

The instructions within the Work section must be conducted to completion in the exact order as detailed

### Customer notification

Please ensure the instructions are conducted at the nearest opportunity, make a note of the required action on the workshop order before it is signed by the customer

If it is omitted to perform the work required during a workshop visit, the customer should be notified immediately

You should also pass on this information to your new and used car sales departments so that affected vehicles are checked and repaired immediately

### Warranty accounting instructions

Warranty type 710

Damage service number EC88

Damage code 00 66

Criterion ID 01

#### Time to conduct the Software Version Management (SVM) update - Front door control modules (Section 1 only if required)

Labour operation code 01 51 00 00

Time As per ODIS log Must not exceed 30 TU

#### Time to conduct the Software Version Management (SVM) update - Rear door control modules (Section 3 all vehicles)

Labour operation code 01 51 00 00

Time As per ODIS log Must not exceed 30 TU

#### Time to check the front and rear side glass (Section 2 all vehicles)

##### Side glass measurement check front right

Labour operation code 64 75 01 52 (Use 99 index until 14/09/23)

Time 10 TU

##### Side glass measurement check rear right

Labour operation code 64 75 01 54 (Use 99 index until 14/09/23)

Time 10 TU

##### Side glass measurement check front left

Labour operation code 64 40 01 52 (Use 99 index until 14/09/23)

Time 10 TU

##### Side glass measurement check rear left

Labour operation code 64 40 01 54 (Use 99 index until 14/09/23)

Time 10 TU

#### Time to conduct the front glass set procedure (Only if required)

Labour operation code 64 40 15 00

Time 70 TU (per side)

### Time to conduct the rear glass set procedure (Only if required)

Labour operation code 64 75 15 00  
Time 130 TU (per side)

### Genuine parts

Not applicable

### Parts supply

Not applicable

### Parts despatch control

Not applicable

## Repair instructions

 Notes

### Technical background

Software update is available for the left and right hand rear door control modules - Diagnostic address 00BB Driver side and 00BC Passenger side

The software eliminates the rear window short drop function

### Check

If the vehicle is not already listed as repaired in "Repair history" (in Elsa pro), check for the presence of the blue paint completion mark as shown within the Identification section

If neither are evident please conduct the instructions within the Work section to completion

### Genuine parts

Not applicable

### Work

1) Using ODIS check the front door control module specification is as shown within Reference table 1 and Reference table 2 (Depending on suffix D or J), should the modules not be as shown the operative must first conduct Section 1 **before** conducting Section 2 and Section 3

### However

In the event the control module software levels are to specification (as shown in Reference table 1 and Reference table 2) please only conduct Section 2 and Section 3


### D suffix front door control modules - Reference table 1

Door control module	Part number	Software version	Target data container
0042 - Front drivers door	4M1.959.953.D	0189	V03.935.344.TP
0052 - Front passenger door	4M1.959.952.D	0189	V03.935.344.TQ

### J suffix front door control modules - Reference table 2

Door control module	Part number	Software version	Target data container
0042 - Front drivers door	4M1.959.953.J	0430	V03.935.349.CM
0052 - Front passenger door	4M1.959.952.J	0430	V03.935.349.CN

**Section 1 - Software update (Only to be conducted in the event that the front control modules 0042 and 0052 are not at the required specification as detailed in Reference table 1 and Reference table 2)**

 <b>CAUTION</b>
CAUTION: Section 1 should only be conducted in the event the software is not at the required specification as detailed within Reference table 1 and Reference table 2, if the software is not to specification please proceed with the onward instructions

2) Referring to Figure 1 - Within the Special functions tab - Select SVM - Code Input (Point A)

• Select Perform test (Point B)

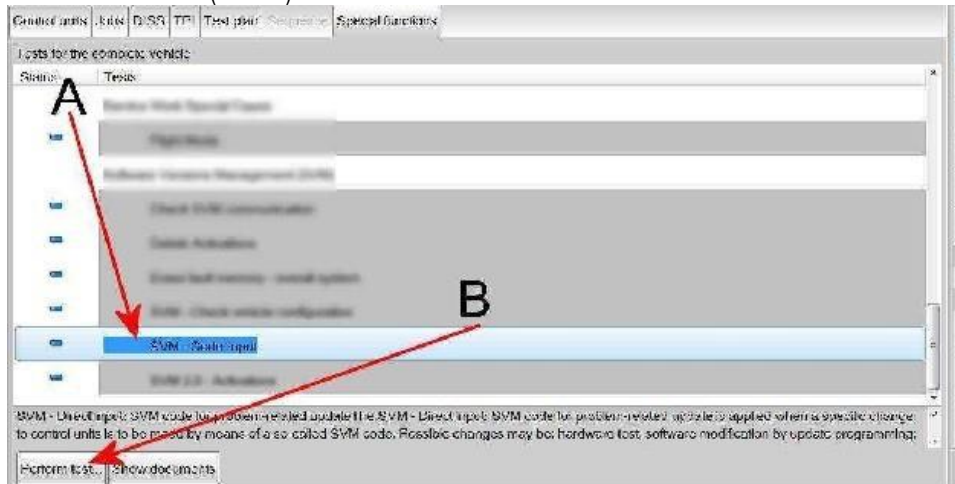


Figure 1

3) Referring to Figure 2 - Enter SVM code 370FTM01

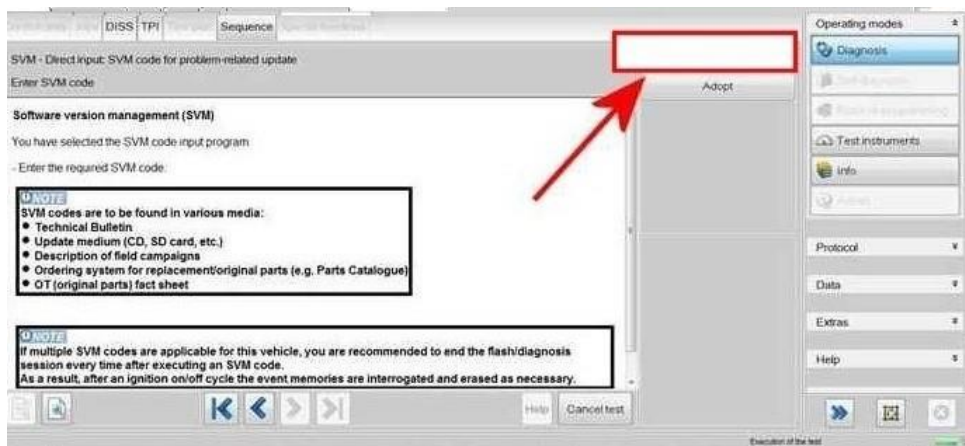


Figure 2

- When prompted enter your global user ID and password
- Follow all on screen prompts to continue through the procedure, the identification data will be transferred

4) The required control modules will be automatically updated one by one, starting with 0042 - Door electronics Drivers side (Figure 3)

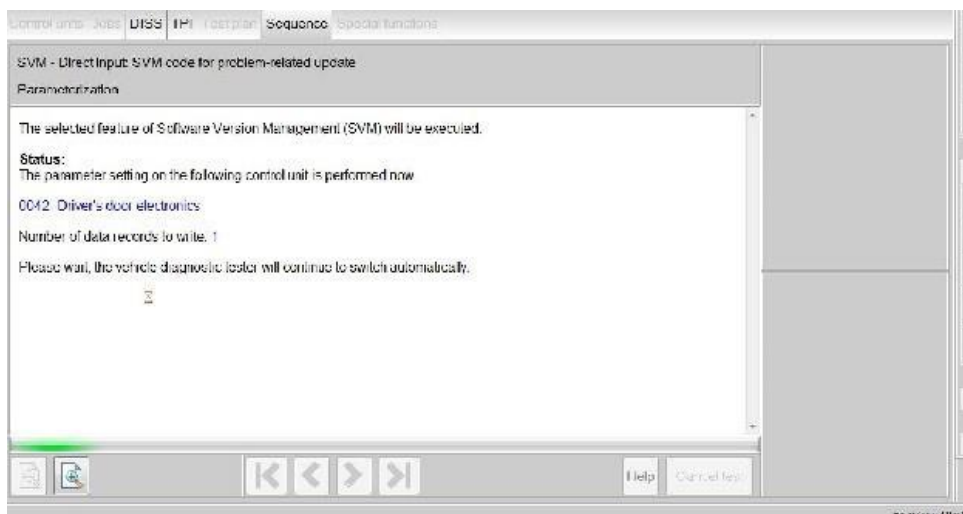


Figure 3

5) On completion recheck the door control module versions against Reference tables 1 and 2 (depending on Part number/Software version)

## [Section 2 - Side glass measurement check \(All vehicles\)](#)

6) Referring to Rep.Gr 64 Side glass - To check - Confirm the side glass measurements are to specification

**NOTICE**

IMPORTANT: The measurements must be recorded as they are required to be uploaded to a non-technical DISS query on completion

- Should the side glass be to specification the operative should go to Section 3 and conduct the required software update

However

In the event the glass measurements are not to specification, the glass must be adjusted before continuing to Section 3

**NOTICE**

IMPORTANT: The before and after measurements must be recorded as the measurements are required to be uploaded to a non-technical DISS query on completion

**Section 3 - Software update to the rear door control modules 00BB and 00BC - Short drop function elimination (All vehicles)**



The following software update eliminates the rear window short drop function

- The closed-circuit voltage of the vehicle must be at least 12.5 V during the update. Connect a suitable battery charger to the vehicle. For further information refer to the Repair manual
- During the update switch off all unnecessary consumers (ventilation, seat heater, interior illumination etc) ensure the main light switch is set to 'off' and leave the driver's door open
- Because of the highest transmission stability you **MUST** use the diagnosis interface VAS 6154 (WiFi diagnostic tool) **ONLY** in USB operation or the cable-connected VAS 5055 for the reprogramming (updating) of control units. If these units are not available, the diagnosis interface VAS 5054 (A) can also be used in USB mode
- Do Not under any circumstances use a Bluetooth connection to conduct the reprogramming (updating) of any control units

7) Referring to Figure 4 - Within the Special functions tab - Select SVM - Code Input (Point A)

- Select Perform test (Point B)

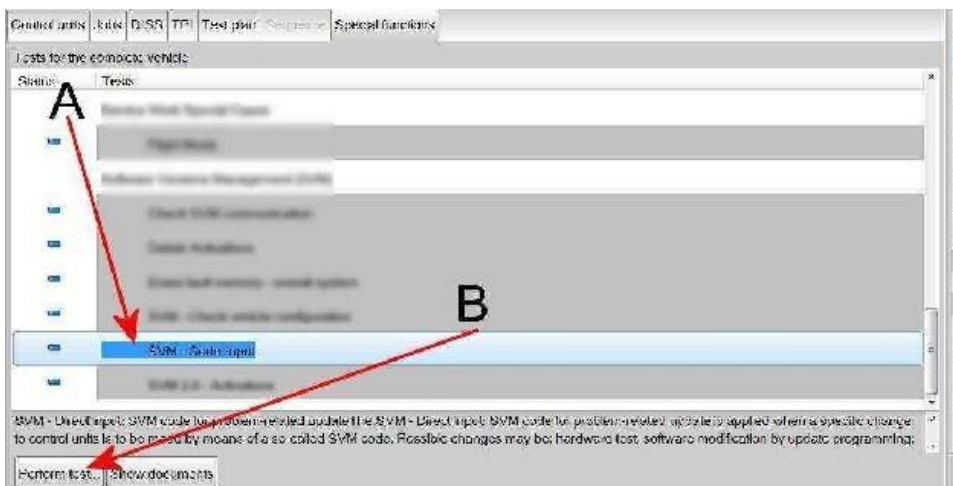


Figure 4

8) Referring to Figure 5 - Enter the SVM code **370WAD01**

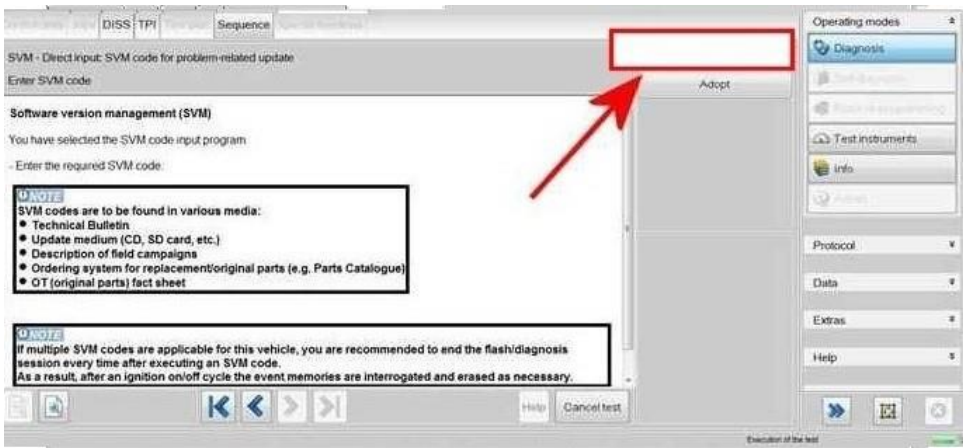


Figure 5

9) When prompted enter your global user ID and password

- Follow all on screen prompts and continue through the procedure, the identification data will be transferred

10) The control modules will automatically be updated one by one, starting with 00BB (Driver rear) and then 00BC (passenger rear)

11) On completion check the door control module versions against the Reference tables 3 and 4 (depending on Part number/Software version)

**Reference table 3**

Door control module	Part number	Software version	Target data container
00BB - Rear driver's door	4M1959955D	0189	V03935413CW
00BC - Rear passenger door	4M1959955D	0189	V03935413CX

**Reference table 4**

Door control module	Part number	Software version	Target data container
00BB - Rear driver's door	4M1959955J	0430	V03935405MS
00BC - Rear passenger door	4M1959955J	0430	V03935405MT

12) Switch off the ignition

- Remove the diagnostic interface from the OBD port
- Switch off and remove the battery charger from the vehicle
- Close the bonnet, boot and all doors
- Lock the vehicle
- Wait 5 minutes to allow the vehicle to go into bus silence
- When 5 minutes has elapsed, unlock the vehicle and open the driver's door
- Switch on the ignition

13) **VERY IMPORTANT** - Referring to Rep.Gr 64 - Side glass - To initialise - Initialise the side glass

14) Raise a non-technical DISS query titled as follows:

**EC88 - Side glass measurements - No adjustment required (Initial measurements attached)**

Or

**EC88 - Side glass measurements - Adjustment required (Before and after adjustment measurements attached)**

15) Referring to the Identification section - Apply a blue paint completion mark on the engine partition brace (Figure 6)

## Identification

Blue paint mark on the engine partition brace confirms completion



Figure 6

▲ Repair instructions ▲ Notes



SCBCA1ZG3KC071942	SCBCA13S1LC078175	SCBCG2ZG5LC079773	SCBDJ33S5LC082407	SCBCX13S0MC086557
SCBCD13S5KC072532	SCBCA1ZG6LC078241	SCBCS13S5LC079780	SCBCG2ZG2LC082422	SCBDB4ZG6MC086585
SCBCA13S6KC072533	SCBCF13S3LC078339	SCBCE13S2LC079856	SCBCF1ZG1LC082442	SCBCX13S0MC086591
SCBCA1ZG0KC072580	SCBCE13S3LC078375	SCBDG4ZG0LC079924	SCBDB4ZG1LC082524	SCBCG2ZG4MC086599
SCBCA1ZG1KC072944	SCBDA33S4LC078395	SCBDG4ZG6LC079927	SCBCZ13S6LC082652	SCBDG4ZG6MC086636
SCBCA13S9KC073076	SCBCB2ZG6LC078405	SCBCJ13S7LC079931	SCBCS13S7LC082695	SCBCX13S7MC086782
SCBCA1ZG3KC073335	SCBDJ33S0LC078426	SCBCJ13S6LC079953	SCBCS13S2LC082698	SCBCB2ZG3MC086818
SCBCA1ZGXC073526	SCBCJ13S8LC078450	SCBCF1ZG9LC080020	SCBCS13S9LC082746	SCBCB2ZG6MC086876
SCBCA1ZG2KC073620	SCBCS13S2LC078473	SCBCJ13SXL080099	SCBCJ13S6LC082805	SCBCF13S1MC086893
SCBCA13S3KC073705	SCBDB4ZG2LC078479	SCBDJ33S1LC080105	SCBCZ13S6LC082876	SCBCB2ZG5MC086934
SCBCA13S3KC073896	SCBCA13S2LC078508	SCBDG4ZGXLC080143	SCBCG2ZGXLC082989	SCBCF1ZG7MC086951
SCBCS13S7KC074059	SCBCS13S1LC078562	SCBCS13S7LC080168	SCBCB2ZG8LC083041	SCBDG4ZG3MC086965
SCBCA13S6KC074086	SCBCA13S2LC078587	SCBDJ33S4LC080177	SCBCF13SXL083117	SCBDX33S4MC086982
SCBDD33S5KC074300	SCBDJ33S2LC078606	SCBDS33S1LC080201	SCBDS33S1LC083163	SCBCZ13S2MC087140
SCBDA33S0KC074505	SCBDJ33S8LC078612	SCBCS13S3LC080233	SCBCF13S2LC083273	SCBDG4ZG1MC087158
SCBDS33S6KC074702	SCBCE13S8LC078680	SCBCJ13S3LC080235	SCBCF13S9LC083304	SCBDX33S1MC087281
SCBDA33S1KC074870	SCBCS13S3LC078725	SCBCA13S7LC080349	SCBCZ13SXL083416	SCBCX13S9MC087318
SCBCG2ZG1LC075171	SCBCE13S9LC078736	SCBCJ13S9LC080370	SCBDB4ZG1LC083432	SCBDG4ZG0MC087345
SCBCE13S3LC075220	SCBCJ13SXL078742	SCBDF33S6LC080425	SCBDA33S8LC083437	SCBCX13S6MC087373
SCBDG4ZG4LC075455	SCBCJ13S0LC078748	SCBCJ13S6LC080472	SCBCF13S0LC083451	SCBDF33S0MC087386
SCBDA33S3LC075519	SCBDJ33S8LC078805	SCBCG2ZG6LC080480	SCBCF13S4LC083565	SCBCG2ZG9MC087456
SCBCG2ZG5LC075609	SCBCA13S8LC078884	SCBDS33S5LC080489	SCBDS33SXL083792	SCBDB4ZG3MC087578
SCBDS33S0LC075622	SCBDJ33S1LC078936	SCBDA33S3LC080574	SCBCS13S0LC083932	SCBCG2ZG2MC087623
SCBCG2ZG4LC076198	SCBCA13S0LC078992	SCBCF13S5LC080576	SCBDA3ZG8LC083991	SCBDX33S1MC087636
SCBCB2ZG9LC076244	SCBDJ33S8LC079002	SCBDS33SXL080584	SCBCZ13S7LC084443	SCBCG2ZG8MC087691
SCBCG2ZG4LC076279	SCBCJ13S8LC079033	SCBCF13S1LC080669	SCBCG2ZG4LC084477	SCBCX13S8MC087701
SCBCG2ZG9LC076293	SCBDS33S9LC079037	SCBCS13S8LC080793	SCBCF13S5LC084482	SCBDA33S6MC087732
SCBDS33S0LC076320	SCBDA33S3LC079053	SCBDE33S5LC080841	SCBCF1ZG7LC084521	SCBCZ13S4MC087835
SCBDA33SXL076389	SCBCJ13S3LC079067	SCBCJ13S7LC080965	SCBCG2ZG1MC084714	SCBCB2ZG1MC088020
SCBCE13S0LC076437	SCBCJ13S3LC079179	SCBDG4ZG5LC080969	SCBDG4ZG6MC085020	SCBCA13S6MC088038
SCBDG4ZG4LC076475	SCBDJ33S1LC079214	SCBDA33S0LC080998	SCBCZ13S2MC085422	SCBDG4ZG1MC088049
SCBCB2ZG7LC076582	SCBDA33S3LC079229	SCBCE13S8LC081076	SCBDX33S6MC085428	SCBCX13S6MC088068
SCBCS13S7LC076587	SCBCA1ZG1LC079247	SCBCF1ZGXLC081127	SCBDX33S1MC085434	SCBCA13S3MC088093
SCBDG4ZG6LC076591	SCBCJ13S9LC079252	SCBDJ33S3LC081157	SCBCF13SXL085550	SCBCF13S5MC088100
SCBCE13S8LC076637	SCBCJ13S1LC079262	SCBCS13S1LC081199	SCBCX13S3MC085600	SCBCA13S1MC088142
SCBCA13S8LC076889	SCBCJ13S0LC079334	SCBCF13S2LC081331	SCBDX33S8MC085706	SCBCA13S9MC088180
SCBCE13S5LC076921	SCBDS33S4LC079379	SCBCJ13S6LC081332	SCBCZ13S8MC085778	SCBCX13S4MC088196
SCBCE13S1LC076964	SCBDJ33S2LC079397	SCBDJ33S9LC081373	SCBDG4ZG0MC085787	SCBCX13S8MC088198
SCBDG4ZG4LC077089	SCBCA13S5LC079412	SCBDS33S6LC081456	SCBDX33S0MC085814	SCBDB4ZG9MC088251
SCBDG4ZG8LC077161	SCBDJ33S2LC079416	SCBCB2ZGXLC081484	SCBDX33S6MC085851	SCBCX13S2MC088293
SCBDG4ZG0LC077171	SCBDJ33SXL079440	SCBDB4ZG4LC081495	SCBCF1ZG9MC085865	SCBCZ13S0MC088299
SCBDS33S3LC077266	SCBDJ33S9LC079459	SCBDF3ZG8LC081515	SCBCZ13S0MC085869	SCBCX13S7MC088323
SCBCE13S3LC077369	SCBCJ13S1LC079522	SCBCF13SXL081576	SCBCZ13S7MC085951	SCBCA13S4MC088331
SCBCE13S0LC077409	SCBDJ33SXL079535	SCBCF1ZG2LC081610	SCBDX33S0MC086140	SCBDX33S4MC088389
SCBCA1ZG6LC077493	SCBCA13S3LC079540	SCBCB2ZG4LC081626	SCBDG4ZG7MC086158	SCBCG2ZG7MC088413
SCBDB4ZG9LC077524	SCBDG4ZG7LC079550	SCBCA13S4LC081636	SCBDX33S8MC086161	SCBCZ13S0MC088416
SCBCE13S2LC077668	SCBCJ13S5LC079555	SCBCJ13S8LC081638	SCBDX33S8MC086175	SCBCZ13S3MC088474
SCBDA33S3LC077755	SCBCJ13S1LC079570	SCBCB2ZGXLC081694	SCBCG2ZG5MC086207	SCBCX13S3MC088478
SCBDG4ZG1LC077762	SCBDJ33S2LC079609	SCBCS13S1LC081851	SCBCX13S1MC086213	SCBDF33S4MC088492
SCBCB2ZG8LC077806	SCBCF13S9LC079639	SCBDJ33S0LC081908	SCBDX33S0MC086221	SCBCA1ZG6MC088494
SCBDJ33S3LC077867	SCBCG2ZG4LC079649	SCBDS33S6LC081912	SCBCG2ZG7MC086306	SCBCG2ZG8MC088498
SCBCJ13S3LC077903	SCBCG2ZG4LC079697	SCBCA13S4LC081930	SCBDB4ZG6MC086361	SCBDX33S1MC088513
SCBDB4ZG5LC077990	SCBDB4ZG4LC079701	SCBDJ33S2LC081991	SCBCB2ZG9MC086404	SCBCG2ZG4MC088529
SCBDJ33S3LC078002	SCBCJ13S1LC079715	SCBDJ33S1LC082002	SCBDG4ZG5MC086420	SCBCZ13S4MC088564
SCBDJ33S1LC078080	SCBDB4ZG5LC079724	SCBDS33S6LC082073	SCBCA13S0MC086429	SCBDZ33S3MC088572
SCBDJ33S4LC078087	SCBCB2ZG0LC079744	SCBDB4ZG6LC082180	SCBCZ13S7MC086467	SCBCZ13S3MC088622
SCBCA1ZG4LC078089	SCBCJ13S5LC079748	SCBDJ33S7LC082277	SCBDG4ZG6MC086541	SCBCF1ZG8MC088630
SCBCS13S2LC078098	SCBDJ33S5LC079751	SCBCB2ZG3LC082296	SCBDX33S8MC086547	SCBCF13S0MC088666
SCBDJ33S4LC078154	SCBDJ33S7LC079766	SCBCA13S2LC082347	SCBCF13S6MC086548	SCBCB2ZG9MC088766

SCBDF33S5MC088808	SCBDT4ZG1NC092258	SCBCG2ZG2NC096307	SCBDX33SXNC097650	SCBCX13S0NC001413
SCBDG4ZG6MC088838	SCBCG2ZG7NC092303	SCBCW13S2NC096334	SCBCW13S8NC097665	SCBCX13S1NC001422
SCBCZ13S0MC088853	SCBDX33SXNC092397	SCBCV1ZG4NC096342	SCBDT4ZG8NC097666	SCBDX33S3NC001471
SCBDG4ZG2MC089114	SCBCW13S5NC092407	SCBCW13S7NC096345	SCBDW33S7NC097673	SCBCG2ZG3NC001494
SCBDF33S6MC089191	SCBDT4ZG6NC092451	SCBDX33S4NC096350	SCBCV1ZG9NC097678	SCBCG2ZG6NC001571
SCBDX33S6MC089222	SCBDG4ZG8NC092536	SCBCG2ZG0NC096385	SCBDX33SXNC097681	SCBCW13SXNC001664
SCBCG2ZG7MC089237	SCBCG2ZG3NC092783	SCBCW13S4NC096397	SCBDT4ZG0NC097791	SCBCX13S4NC001690
SCBCG2ZG6MC089245	SCBCU13S9NC092853	SCBCT2ZGXNC096437	SCBDX33S3NC097800	SCBCX13S1NC001842
SCBCE13S1MC089246	SCBCT2ZG1NC092969	SCBDG4ZG2NC096453	SCBCG2ZG6NC097816	SCBDW33S6NC001872
SCBCX13S3MC089260	SCBDW33S2NC092977	SCBCF13S3NC096455	SCBDW33S7NC097818	SCBDG4ZG5NC001948
SCBCB2ZG7MC089348	SCBDG4ZGXNC093008	SCBDG4ZGXNC096460	SCBDW33S9NC097822	SCBDG4ZG8NC001958
SCBCZ13S4MC089374	SCBCW13S3NC093152	SCBCT2ZG6NC096466	SCBCG2ZG5NC097838	SCBCX13S5NC001987
SCBCZ13S1MC089378	SCBCW13S5NC093279	SCBDW33S8NC096497	SCBCW13S5NC097851	SCBCW13S5NC002009
SCBCA13S4MC089382	SCBCF1ZG4NC093521	SCBCW13S2NC096527	SCBCX13S4NC097868	SCBDT4ZG5NC002500
SCBDG4ZG4MC089390	SCBDT4ZG7NC093611	SCBCW13S2NC096561	SCBCF1ZG9NC097872	SCBDG4ZG9NC002858
SCBCF13S8MC089435	SCBCG2ZG2NC093732	SCBCG2ZG3NC096610	SCBDX33S4NC097935	SCBCF13S7NC002920
SCBCA13S6MC089450	SCBCJ13S5NC093846	SCBDG4ZG6NC096651	SCBCZ13S4NC097945	SCBCX13S4NC003357
SCBCF13S1MC089468	SCBDW33S9NC094080	SCBCG2ZGXNC096829	SCBCT2ZGXNC097975	SCBCF13S8NC004031
SCBCB2ZG7MC089480	SCBDG4ZG6NC094124	SCBCG2ZG8NC096845	SCBCT2ZG7NC097979	SCBCW13SXNC004113
SCBCZ13S3MC089706	SCBDG4ZG8NC094156	SCBCT2ZG2NC096853	SCBCZ13S8NC097981	SCBCF13S0NC004119
SCBCF13SXMC089727	SCBCZ13S3NC094311	SCBCV1ZG3NC096963	SCBCT2ZGXNC098060	SCBDF33S1NC004260
SCBCZ13S7MC089918	SCBCW13S7NC094336	SCBCW13S1NC096986	SCBCZ13S3NC098083	SCBDT4ZG8NC004287
SCBDG4ZG7MC090002	SCBDX33S2NC094726	SCBCX13S9NC096988	SCBCX13S0NC098158	SCBCW13S1NC004453
SCBCZ13S9MC090004	SCBCX13SXNC094912	SCBCW13S8NC097035	SCBCX13S2NC098162	SCBCX13S1NC004627
SCBDG4ZGXMC090057	SCBCW13S5NC094965	SCBCW13S5NC097039	SCBDG4ZG3NC098194	SCBDG4ZG2PC005040
SCBCG2ZGXMC090110	SCBCW13S6NC095039	SCBCW13S1NC097085	SCBDX33S9NC098210	SCBCX13S3PC005085
SCBCZ13S8MC090284	SCBCW13S3NC095063	SCBCW13S0NC097126	SCBCW13SXNC098249	SCBCG2ZG4PC005105
SCBCZ13S6MC090297	SCBDX33S5NC095109	SCBDX33S6NC097158	SCBDG4ZG1NC098260	SCBCW13S6PC005326
SCBCG2ZG4MC090331	SCBCF13S0NC095134	SCBCG2ZG9NC097177	SCBCG2ZG3NC098342	SCBDX33S0PC005335
SCBCX13S2MC090383	SCBCG2ZG0NC095236	SCBCX13S5NC097202	SCBCT2ZG6NC098346	SCBCW13S6PC005343
SCBDX33S4MC090384	SCBDX33S1NC095267	SCBCX13S0NC097222	SCBCT2ZGXNC098396	SCBDX33S7PC005705
SCBDG4ZG0MC090388	SCBCG2ZG9NC095283	SCBCW13S7NC097236	SCBCF13S9NC098422	SCBCW13S4PC005941
SCBDG4ZG0MC090407	SCBCW13S0NC095361	SCBCG2ZG1NC097237	SCBDX33SXNC098426	SCBDG4ZGXPC005996
SCBDG4ZG1MC090416	SCBCW13S9NC095391	SCBCX13S3NC097277	SCBCT2ZG7NC098436	SCBCX13S6PC006053
SCBCF13S8MC090679	SCBDG4ZG6NC095421	SCBDG4ZG1NC097285	SCBDX33S6NC098438	SCBDX33S5PC006299
SCBCG2ZG6NC090879	SCBCX13S2NC095617	SCBCW13S2NC097287	SCBDX33S3NC098476	SCBCG2ZG1PC006308
SCBDZ33S5NC090891	SCBCW13S0NC095621	SCBCX13S7NC097301	SCBCW13S3NC098495	SCBCX13S7PC006479
SCBCW13S5NC090916	SCBCV1ZG1NC095715	SCBCX13S0NC097334	SCBDX33SXNC098507	SCBCX13SXPC006489
SCBCT2ZGXNC091190	SCBCX13S8NC095721	SCBCF13S2NC097354	SCBDX33S7NC098559	SCBCX13S9PC006516
SCBCW13S9NC091244	SCBDX33S9NC095727	SCBDG4ZG9NC097356	SCBCX13S7NC001036	SCBCG2ZG0PC006767
SCBDT4ZG1NC091305	SCBCW13S2NC095782	SCBCT2ZG9NC097417	SCBDX33S2NC001056	SCBC113S8PC006802
SCBDT4ZG9NC091505	SCBDW33S1NC095885	SCBCX13S9NC097431	SCBDG4ZGXNC001069	SCBCW13S5PC006905
SCBDX33S3NC091561	SCBCZ13S6NC095887	SCBCX13S1NC097438	SCBCX13S2NC001087	SCBDT4ZG5PC006999
SCBDZ33S9NC091610	SCBCX13S5NC095921	SCBCX13S8NC097470	SCBDW33S6NC001094	SCBCW13S9PC007216
SCBDT4ZG7NC091650	SCBCZ13S8NC095986	SCBDT4ZG4NC097518	SCBDG4ZG4NC001116	SCBDG4ZG7PC007656
SCBCZ13S6NC091788	SCBCF13S8NC095995	SCBDX33S1NC097522	SCBDX33S5NC001133	SCBCK13S7PC008361
SCBDX33S4NC091794	SCBCW13S0NC096056	SCBDG4ZG0NC097536	SCBDX33S9NC001250	SCBDW33S3PC008460
SCBCX13S2NC092149	SCBCX13S8NC096092	SCBDW33S1NC097538	SCBDT4ZGXNC001276	SCBCX13S8PC010363
SCBDT4ZG6NC092157	SCBCW13S1NC096275	SCBDT4ZG6NC097617	SCBDG4ZG6NC001411	