

A PDF of this newsletter and previous ones can be found by logging in to ServiceNet and clicking on the [Elsa Newsletter](#) section in the Technician References menu.

# VW Elsa Newsletter



Das Auto.

Edition 106: October 6, 2014

## Content

- [Reminder: VW Google Now Available through vwhub.com](#)
- [Technical Bulletins](#)
- [Pending Service Solutions](#)
- [Tech Tips](#)
- [Campaigns](#)
- [Updates](#)
- [Suggestions](#)



## Reminder: VW Google Now Available through [vwhub.com](#)

**VW Google**, a Google-powered portal for searching selected repair information is now available for Elsa users as a direct link on [vwhub.com](#).

### Tips - Searching for TB's in VW Google:

Users can find all Technical Bulletins (TB) on VW Google multiple ways:

- TB group number (example: "26-12-07")

- TB title(example: "A Blue Filling at Delivery")
- TB instance (example: "2031040/1"):
- Or by Key word search (example: "ad blue")

[Back to top](#)

## Technical Bulletins

**00 14 10 - 2036935 Supersedes V001408 dated July 30, 2014 to include comments about an open by-pack package during PDI.**

### By-Pack At Delivery

Model(s)	Year	Eng. Code	Trans. Code	VIN Range From	VIN Range To
All Models	2014–2015	All	All	All	All

Components may be missing from the by-pack at delivery.

**Production Solution:** Not applicable.

**87 14 10 - 2038368 Air Conditioning Does Not Cool and or Compressor is Noisy**

Model(s)	Year	Eng. Code	Trans. Code	VIN Range From	VIN Range To
Golf/GTI	2015	All	All	All	All

One or more of the following conditions are exhibited:

- The air conditioning does not cool, or the cooling performance is very weak.
- The air conditioning system cools, but the compressor is noisy. The noise is characterized as a grinding or groaning noise.
  - Either symptom may be intermittent.
  - No DTCs are stored.

**Production Solution:** Final production countermeasures pending.

**87 14 11 - 2038081 Air Conditioning Inoperative and or DTC B10A911  
Present HVAC Fault Memory**

Model(s)	Year	Eng. Code	Trans. Code	VIN Range From	VIN Range To
GTI/Golf	2015	All	All	All	All

The following conditions may be present:

- Fault in HVAC control module, B10A911: Activation A/C compressor Short circuit to ground.
  - The air conditioning may or may not be inoperative.

**Production Solution:** Final production solution pending.

## Pending Service Solutions

No new Pending Service Solutions this week.

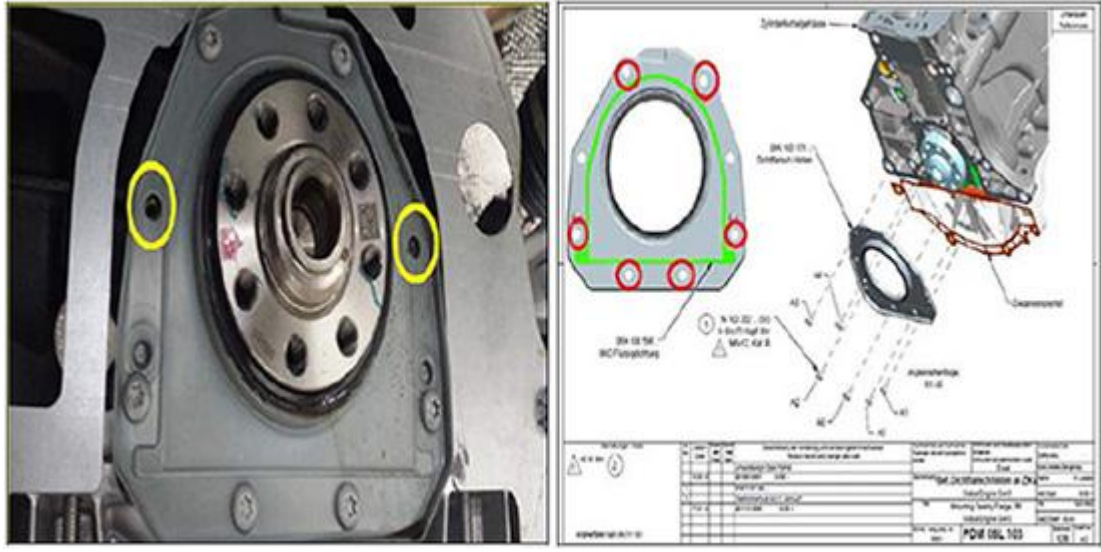
[Back to top](#)

## Tech Tips

### 13-14-01 Rear Main Seal Bolts Missing

Model(s)	Year	Eng.Code	Trans.Code
Jetta, Passat, Beetle 1.8L/2.0L	2014–2015	CPRA, CPKA, CPPA, CPLA	All

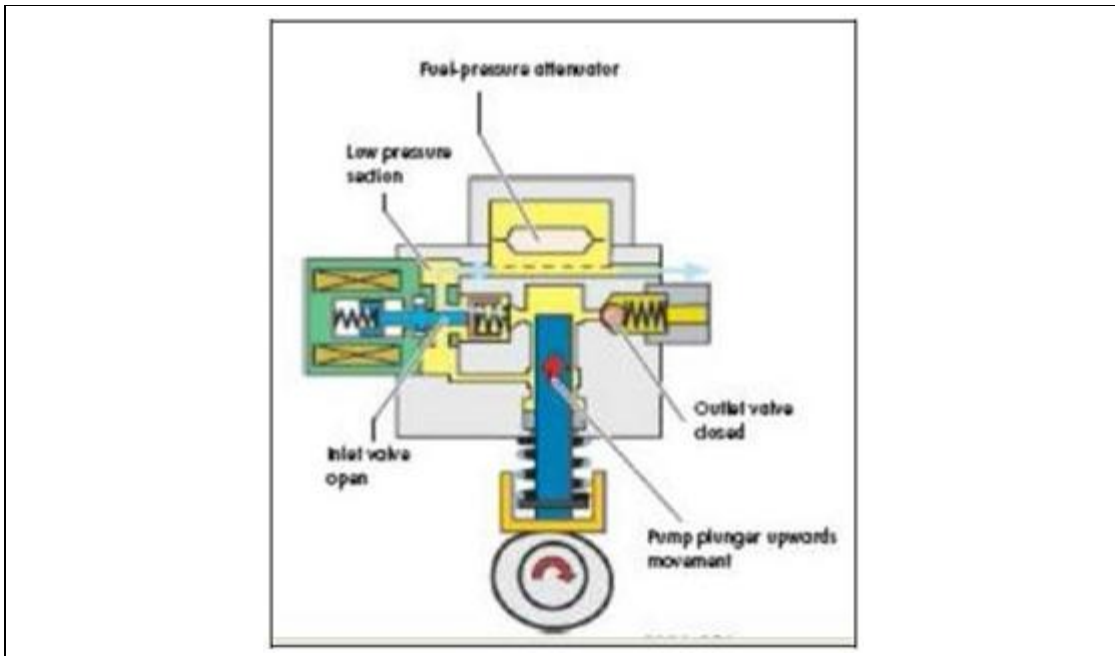
There are no bolts installed at the 9 and 3 o'clock positions from the factory. No bolts need to be installed in these locations while performing repairs. See photos for reference.



### 20-06-145 High Pressure Fuel Pump Replacement Update to information: September 19, 2014.

Model(s)	Year	Eng.Code	Trans.Code
Jetta A5, GTI, Passat	2006–2007	2.0 Turbo FSI (BPY)	All

If replacing the high pressure fuel pump, also remove the cam follower from the timing cover/cylinder head and inspect for wear. Reference Technical Bulletin 2015153 (V151401).



**45-09-04 Equipped with Electromechanical Power Steering – G85 Location Identification Tip**

**September 26, 2014: Update to model year information.**

Model(s)	Year	Eng.Code	Trans.Code
Jetta, Eos, Rabbit, Golf, GTI, Passat, CC, and Tiguan	2009–2015	All	All

Some Golf, GTI, Jetta, and Passat vehicles equipped with electromechanical power steering have the G85 steering angle sensor located in the steering rack. These vehicles do not have a G85 in the steering column. To determine G85 location, check the J500 Power steering control module part number in the GFF printout. Do not use the part number on the steering rack for this check.

All Rabbit, Tiguan, and CC vehicles as well as all 2009-2010 Passat vehicles have the G85 located in the steering column.

If the steering rack has not been replaced, adaptation channel 9 in address word 44-Steering assistance can be used to tell which system the vehicle is equipped with. If there is a channel 9, then there is a G85 in the rack. If adaptation channel 9 shows "channel not present", then the G85 is in the column. If the vehicle was originally built with a steering rack that has a G85, adaptation channel 9 should be set to 0 (ON). If a steering rack that has a G85 is installed in a vehicle that was built with the G85 in the column, adaptation channel 9 should be set to 1 (OFF).

Incorrect adaptation channel 9 setting can cause faults in AW 19 Diagnostic interface for databus (gateway) and/or AW 03 Brake electronics.

Steering control module part numbers that start with 1K1 such as Rabbit part # 1K1 909 144 M do not have the G85 in the rack.

Part numbers that start with 1K0 such as Jetta Part # 1K0 909 144 C do have the G85 in the rack.

Part numbers that start with 5N0 or 5N1 such as Tiguan part # 5N1 909 144 J do not have the G85 in the rack.

[Back to top](#)

## Campaigns

No new campaigns this week.

## Updates

### **23N7 UPDATE - TDI Battery Management Software (FED\_EMS)**

#### **NOTE:**

- **Perform this UPDATE on all applicable vehicles within the Federal Emissions Warranty.**
- **It is MANDATORY to perform UPDATES on all applicable vehicles in dealer inventory PRIOR TO RETAIL SALE.**
- **Inform customers that this UPDATE will be available free of charge as long as their vehicle is within the Warranty parameters outlined in this UPDATE.**

#### **NOTE:**

**Required DMS Wording/Programming Text (SAGA claim comments): UPDATE Code 23N7 TDI Battery Management Software (FED\_EMS)**

Model(s)	Year	Eng. Code	Trans. Code	VIN Range From	VIN Range To
----------	------	-----------	-------------	----------------	--------------

Passat, Jetta, Beetle, Beetle Convertible	2015	2.0L TDI (CVCA)	All	See Campaign/Action Screen in Elsa	See Campaign/Action Screen in Elsa
Golf	2015	2.0L TDI (CRUA)	All	See Campaign/Action Screen in Elsa	See Campaign/Action Screen in Elsa

This update has been proactively released to prevent the battery from becoming discharged due to a unique set of circumstances during the CAN bus diagnostic phase, leading to excessive parasitic draw and a discharged battery while the vehicle is parked.

**REVISION: 45D7 UPDATE - TPMS/ESC Software (NVLW) NOTE:**

- **Perform this UPDATE on all applicable vehicles within New Vehicle Limited Warranty.**
- **It is MANDATORY to perform UPDATES on all applicable vehicles in dealer inventory PRIOR TO RETAIL SALE.**
- **Inform customers that this UPDATE will be available free of charge as long as their vehicle is within the Warranty parameters outlined in this UPDATE.**

**NOTE:**

**Required DMS Wording/Programming Text (SAGA claim comments): UPDATE Code 45D7 TPMS/ESC Software (NVLW)**

Model(s)	Year	Eng. Code	Trans. Code	VIN Range From	VIN Range To
Jetta, Beetle, Beetle Convertible	2014–2015	All	All	See Campaign/Action Screen in Elsa	See Campaign/Action Screen in Elsa

This update has been proactively released to prevent illumination of the TPMS and/or ESC light at vehicle start-up and/or under low speed (e.g. <7mph) driving conditions after vehicle start-up. The condition goes away immediately after start up or at speeds greater than 7 mph.

This UPDATE is in effect until removed.  
Vehicle must meet all of the following criteria:

- Procedure is valid only for vehicles that show the 45D7 code in Elsa,

Campaign/Action Information screen on the day of repair.

- If the vehicle is sold it must be within the Federal Emissions Warranty.
- Procedure must be performed within the allotted time frame stated in this UPDATE.
- Procedure must be performed on applicable vehicles in dealer inventory prior to sale.

## Suggestions

Please send comments or suggestions to: [vwoa.workshopinformation@vw.com](mailto:vwoa.workshopinformation@vw.com)

[Back to top](#)

© 2014 Volkswagen of America, Inc. All rights reserved. Information contained in this document is based on the latest information available at the time of printing and is subject to the copyright and other intellectual property rights of Volkswagen of America, Inc., its affiliated companies and its licensors. All rights are reserved to make changes at any time without notice. No part of this document may be reproduced, stored in a retrieval system, or transmitted in any form or by any means, electronic, mechanical, photocopying, recording, or otherwise, nor may these materials be modified or reposted to other sites, without the prior expressed written permission of the publisher.