

WPJ2 - Replacing Screw Connections on Spring Strut and Transmission Mounts (Workshop Campaign)

Model Line: **718 (982)
911 (992)**

Model Year: **2023**

Concerns: **Screw connections on spring strut and transmission mounts**

Cause: **On the affected vehicles, there is a possibility -that nuts that do not meet the required specifications have been installed on the spring strut and transmission mount.**

Action: Replace screw connections on spring strut and/or transmission mounts.



Information

Every vehicle is assigned exactly one campaign scope.

⇒ To find out which scope is assigned to the relevant vehicle, see PCSS Vehicle Information.

Scope 1: Replacing screw connections on front axle spring struts – 911 (992)

Scope 2: Replacing screw connections on rear axle spring struts – 911 Cabriolet (992)

Scope 3: Replacing screw connections on rear axle spring struts – 911 Targa (992)

Scope 4: Replacing screw connections on rear axle spring struts – 911 Coupé (992)

Scope 5: Replace screw connections on front axle and rear axle spring struts – 911 Targa (992)

Scope 6: Replace screw connections on front axle and rear axle spring struts – 911 Cabriolet (992)

Scope 7: Replacing screw connections on spring struts on front axle –718 (982)

Scope 8: Replacing screw connections on rear axle spring struts–718 Boxster (982) / 718 Spyder (982)

Scope 9: Replace screw connections on rear axle spring struts–718 Cayman (982) / 718 Cayman GT4 (982)

Scope 10: Replace screw connections on front axle and rear axle spring struts–718 Boxster (982) / 718 Spyder (982)

Scope 11: Replace screw connections on front axle and rear axle spring struts –718 Cayman (982) / 718 Cayman GT4 (982)

Scope 12: Replacing screw connections on transmission mounts -- 718 (982)

Scope 13: Replacing screw connections on transmission mounts and spring strut on rear axle–718 (982)

The **part numbers** of the **required parts** for the respective vehicle can be seen in the **assigned scope**.
For an overview of the campaign scopes, see: ⇒ *Technical Information 'Warranty processing'*

Affected Vehicles: Only vehicles assigned to the campaign (see also PCSS Vehicle Information).

Required tools

Tool: • Torque wrench, 2–100 Nm, e.g. **9768 - Electronic torque wrench, 2–100 Nm (1.5–74 ftlb.)**

Replacing the screw connections on the spring struts on the left and right on the front axle

Work Procedure: 1 Remove technical equipment space cover.
⇒ *Workshop Manual '852219 Removing and installing technical equipment space cover'*



Information

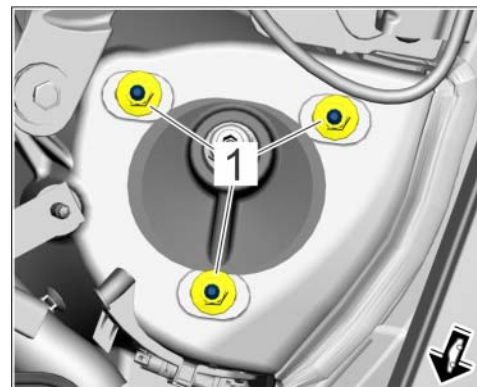
To ensure that the suspension setup does not change, the nuts must be successively replaced and tightened using the specified tightening torque.

- 2 Replace nuts ⇒ *Fastening nuts on front spring strut (shown on 718 (982)) -1* - individually one after the other with **new nuts** ⇒ *Fastening nuts on front spring strut (shown on 718 (982)) -1* - and tighten them.

For 718 (982):
Tightening torque 33 Nm (24.3 ftlb.)

For 911 (992):
Tightening torque 30 Nm (22.1 ftlb.)

- 3 Install technical equipment space cover.
⇒ *Workshop Manual '852219 Removing and installing technical equipment space cover'*
- 4 Enter the campaign in the Warranty and Maintenance logbook.
- 5 Continue by replacing ⇒ *Technical Information '852219 screw connection on rear axle spring struts* 'or invoicing for **scope 1 – 911 (992)** or **scope 7 – 718 (982)**



Fastening nuts on front spring strut (shown on 718 (982))

Replacing the screw connections on the spring struts on the left and right on rear axle

Work Procedure: 1 **Only for 911 Cabriolet (992) or 911 Targa (992) :**

Removing trim for convertible top shelf.

⇒ *Workshop Manual '700819 Removing and installing trim for convertible top shelf'*

1 **Only for 911 Coupé (992):**

Remove rear cover.

⇒ *Workshop Manual '705319 Removing and installing rear cover'*



Information

To ensure that the suspension setup does not change, the nuts must be successively replaced and tightened using the specified tightening torque.

2 Replace nuts ⇒ *Fastening nuts on rear spring strut -2-* individually one after the other with **new nuts** ⇒ *Fastening nuts on rear spring strut -2-* and tighten with **Tightening torque 30 Nm (22.1 ftlb.)**.

3 **Only for 911 Cabriolet (992) or 911 Targa (992):**

Install trim for convertible top shelf.

⇒ *Workshop Manual '700819 Removing and installing trim for convertible top shelf'*

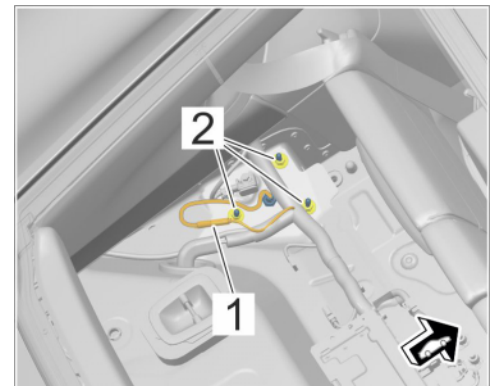
3 **Only for 911 Coupé (992):**

Install rear cover.

⇒ *Workshop Manual '705319 Removing and installing rear cover'*

4 Enter the campaign in the Warranty and Maintenance logbook.

5 Continue with invoicing **scope 2, scope 3, scope 4, scope 5 or scope 6**.



Fastening nuts on rear spring strut

Replacing the screw connections on the spring struts on the left and right on rear axle

Work Procedure: 1 **Only for 718 Boxster (982) or 718 Spyder (982):**

Remove rear luggage compartment trim.

⇒ *Workshop Manual '700619 Removing and installing trim for rear luggage compartment'*

1 **Only for 718 Cayman (982):**

Remove rear cover.

⇒ *Workshop Manual '705319 Removing and installing rear cover'*

**Information**

To ensure that the suspension setup does not change, the nuts must be successively replaced and tightened using the specified tightening torque.

- 2 Replace nuts ⇒ *Fastening nuts on rear spring strut -1-* one by one with **new nuts** ⇒ *Fastening nuts on rear spring strut -1-* and tighten with **Tightening torque 33 Nm (24.3 ftlb.)**.

- 3 **Only for 718 Boxster (982) or 718 Spyder (982):**

Install rear luggage compartment trim.
⇒ *Workshop Manual '700619 Removing and installing trim for rear luggage compartment'*

- 3 **Only for 718 Cayman (982):**

Install rear cover.
⇒ *Workshop Manual '705319 Removing and installing rear cover'*

- 4 Enter the campaign in the Warranty and Maintenance logbook.

- 5 Continue to replace ⇒ *Technical Information '705319 screw connection on both transmission mounts'* or invoice **scope 8, scope 9, scope 10 or scope 11**.



Fastening nuts on rear spring strut

Replacing screw connections on both transmission mounts

Work Procedure: 1 Raise the vehicle.
⇒ *Workshop Manual '4X00IN Raising the vehicle'*

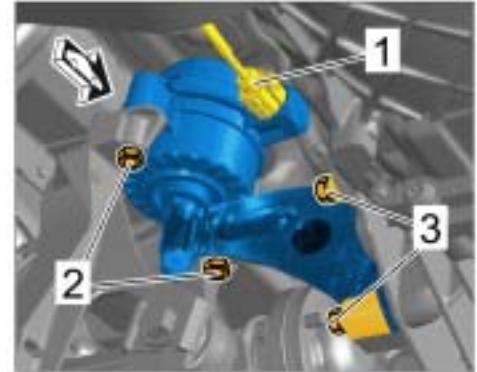
- 2 **Only for 718 Cayman GT4 (982) or 718 Spyder (982):**

Remove rear underbody cover (rear).
⇒ *Workshop Manual '519419 Removing and installing rear underbody cover (rear)'*

**Information**

To ensure that the suspension setup does not change, the nuts must be successively replaced and tightened using the specified tightening torque.

- 3 Replace nuts ⇒ *Fastening nut for transmission mount -2-* individually one after the other with **new nuts** ⇒ *Fastening nut for transmission mount -2-* and tighten with **tightening torque 33 Nm (24.3 ftlb.)**.
- 4 **Only for 718 Cayman GT4 (982) or 718 Spyder (982):**
 Install rear underbody cover (rear).
 ⇒ *Workshop Manual '519419 Removing and installing rear underbody cover (rear)'*
- 5 Lower the vehicle and remove it from the lifting platform.
 ⇒ *Workshop Manual '4X00IN Raising the vehicle'*
- 6 Enter the campaign in the Warranty and Maintenance logbook.
- 7 Continue with invoicing **scope 12** or **scope 13**.



Fastening nut for transmission mount

Warranty processing



Information

The specified labor time was determined specifically for carrying out this campaign and includes all required preliminary work and rework. The labor time may differ from the working times published in the Labor Times in the PCSS.

Scope 1: **Replacing screw connection on spring struts on front axle – 911 (992)**

Labor time:	
Replacing screw connection on spring struts on front axle	Labor time: 33 TU
Includes: Removing and installing (technical equipment space) cover	
Required parts:	
PAF003923 Hexagon nut M8	6 pieces
⇒ Damage number WPJ2 066 000 2	

Scope 2: **Replacing screw connection on rear axle spring struts – 911 Cabriolet (992)****Labor time:**

Replacing screw connection on rear axle spring struts

Labor time: **69 TU**

Includes: Removing and installing trim for convertible top shelf
Convertible top service position
Removing and installing rear cover

Required parts:

PAF003923 Hexagon nut M8 6 pieces

⇒ **Damage number WPJ2 066 000 2**Scope 3: **Replace screw connection on rear axle spring struts – 911 Targa (992)****Labor time:**

Replacing screw connection on rear axle spring struts

Labor time: **66 TU**

Includes: Removing and installing trim for convertible top shelf
Removing and installing rear wall trim
Removing and installing rear cover (front side)
Removing and installing belt guide
Removing and installing rear cover

Required parts:

PAF003923 Hexagon nut M8 6 pieces

⇒ **Damage number WPJ2 066 000 2**Scope 4: **Replacing screw connection on rear axle spring struts – 911 Coupé (992)****Labor time:**

Replacing screw connection on rear axle spring struts

Labor time: **47 TU**

Includes: Removing and installing rear roof trim panel
Removing and installing rear cover

Required parts:

PAF003923 Hexagon nut M8 6 pieces

⇒ **Damage number WPJ2 066 000 2**

Scope 5: Replace screw connection on front axle and rear axle spring struts – 911 Targa (992)**Labor time:**

Replacing screw connection on front axle and rear axle spring struts

Labor time: **88 TU**

Includes: Removing and installing trim for convertible top shelf
Removing and installing rear wall trim
Removing and installing rear cover (front side)
Removing and installing belt guide
Removing and installing rear cover
Removing and installing (technical equipment space) cover

Required parts:

PAF003923 Hexagon nut M8 12 pieces

⇒ **Damage number WPJ2 066 000 2****Scope 6: Replacing screw connection on front axle and rear axle spring struts – 911 Cabriolet (992)****Labor time:**

Replacing screw connection on front axle and rear axle spring struts

Labor time: **91 TU**

Includes: Removing and installing trim for convertible top shelf
Convertible top service position
Removing and installing rear cover
Removing and installing (technical equipment space) cover

Required parts:

PAF003923 Hexagon nut M8 12 pieces

⇒ **Damage number WPJ2 066 000 2****Warranty processing****Information**

The specified labor time was determined specifically for carrying out this campaign and includes all required preliminary work and rework. The labor time may differ from the working times published in the Labor Times in the PCSS.

Scope 1: Not relevant for this vehicle type.

Scope 2: Not relevant for this vehicle type.

Scope 3: Not relevant for this vehicle type.

Scope 4: Not relevant for this vehicle type.

Scope 5: Not relevant for this vehicle type.

Scope 6: Not relevant for this vehicle type.

Scope 7: **Replacing screw connection on spring struts front axle – 718 (982)**

Labor time:

Replacing screw connection on spring struts on front axle

Labor time: **37 TU**

Includes: Removing and installing (technical equipment space) cover

Required parts:

PAF003923 Hexagon nut M8

6 pieces

⇒ Damage number WPJ2 066 000 2

Scope 8: **Replacing screw connection on rear axle spring struts – 718 Boxster (982) or 718 Spyder (982)**

Labor time:

Replacing screw connection on rear axle spring struts

Labor time: **37 TU**

Includes: Removing and installing rear luggage compartment light

Removing and installing trim for rear luggage compartment

Required parts:

PAF003923 Hexagon nut M8

6 pieces

⇒ Damage number WPJ2 066 000 2

Scope 9: **Replacing screw connection on rear axle spring struts – 718 Cayman (982) or 718 Cayman GT4 (982)**

Labor time:

Replacing screw connection on rear axle spring struts

Labor time: **37 TU**

Includes: Removing and installing rear cover
Removing and installing (rear part of) C-pillar trim
Removing and installing luggage compartment side trim panel rear
Removing and installing cover over the spring strut mounts.

Required parts:

PAF003923 Hexagon nut M8 6 pieces

⇒ Damage number WPJ2 066 000 2

Scope 10: **Replacing screw connection on front axle and rear axle spring struts – 718 Boxster (982) or 718 Spyder (982)**

Labor time:

Replacing screw connection on front axle and rear axle spring struts

Labor time: **63 TU**

Includes: Removing and installing rear luggage compartment light
Removing and installing trim for rear luggage compartment
Removing and installing (technical equipment space) cover

Required parts:

PAF003923 Hexagon nut M8 12 pieces

⇒ Damage number WPJ2 066 000 2

Scope 11: **Replacing screw connection on front axle and rear axle spring struts – 718 Cayman (982) or 718 Cayman GT4 (982)**

Labor time:

Replacing screw connection on front axle and rear axle spring struts

Labor time: **64 TU**

Includes: Removing and installing rear cover
Removing and installing (rear part of) C-pillar trim
Removing and installing luggage compartment side trim panel rear
Removing and installing cover over the spring strut mounts.
Removing and installing (technical equipment space) cover

Required parts:

PAF003923 Hexagon nut M8 12 pieces

⇒ Damage number WPJ2 066 000 3

Scope 12: **Replacing transmission mount screw connections****Labor time:**Replacing transmission mount screw connections Labor time: **78 TU**Includes: Raising the vehicle
Removing and installing rear underbody cover (rear)
Removing and installing rear spoiler, lower part (diffuser)**Required parts:**

PAF003923 Hexagon nut M8 4 pieces

⇒ Damage number WPJ2 066 000 2

Scope 13: **Replace screw connection on rear axle spring struts and transmission bearing****Labor time:**Replace screw connection on rear axle spring struts and transmission bearing Labor time: **105 TU**Includes: Removing and installing rear cover
Removing and installing (rear part of) C-pillar trim
Removing and installing luggage compartment side trim panel rear
Removing and installing cover over the spring strut mounts.
Raising the vehicle
Removing and installing rear underbody cover (rear)
Removing and installing rear spoiler, lower part (diffuser)**Required parts:**

PAF003923 Hexagon nut M8 10 pieces

⇒ Damage number WPJ2 066 000 2

Important Notice: Technical Bulletins issued by Porsche Cars North America, Inc. are intended only for use by professional automotive technicians who have attended Porsche service training courses. They are written to inform those technicians of conditions that may occur on some Porsche vehicles, or to provide information that could assist in the proper servicing of a vehicle. Porsche special tools may be necessary in order to perform certain operations identified in these bulletins. Use of tools and procedures other than those Porsche recommends in these bulletins may be detrimental to the safe operation of your vehicle, and may endanger the people working on it. Properly trained Porsche technicians have the equipment, tools, safety instructions, and know-how to do the job properly and safely. Part numbers listed in these bulletins are for reference only. The work procedures updated electronically in the Porsche PIWIS diagnostic and testing device take precedence and, in the event of a discrepancy, the work procedures in the PIWIS Tester are the ones that must be followed.

© 2023 Porsche Cars North America, Inc.