

REFERENCE:	Nova Bus Manuals
SECTION:	01: Body
RS N°:	MQR 7621-2406
EFFECTIVE IN PROD.:	NA

APPLICATION DEADLINE: 2024NO04  
CLAIM REFERENCE NUMBER: WB-5467

SUBJECT:	Frame crack near fuel tank.
JUSTIFICATION:	Potential presence of a gap may cause frame crack. Only to perform during a frame crack repair process near front bolt of joint #2 (see figure 3 for joint #2 location).

LEVEL	DESCRIPTION	DIRECT CHARGES		TIME
		LABOUR	MATERIAL	
1	–	–	–	–
2	Install the shim between the frame rail and the cradle on the front bolt of joint #2.	Nova Bus	Nova Bus	1 h

#### MATERIAL REQUIRED PER VEHICLE

QTY	PART N°	REV.	DESCRIPTION
<b>LEVEL 1</b>			
–	–	–	–
<b>LEVEL 2</b>			
1	N109634	–	Shim

Materials will be available within 37 days once your order has been placed.

To order, please contact [novabus.parts@volvo.com](mailto:novabus.parts@volvo.com)

Or by phone for CANADA 1-800-771-6682, for USA 1-877-999-8808

Specify document number, quantity of parts required and shipping address.

#### DISPOSAL OF PARTS

REMOVED PARTS ARE:	DISCARDED *	RETAINED	* Dispose of the unused parts and the defective parts in accordance with local environmental standards in effect.
	Yes	–	

#### REVISION HISTORY

REV.	DATE	CHANGE DESCRIPTION	WRITTEN BY
NR	2023SE15	Initial release	Nandan B S

APPROVED BY:

Signature  
numérique de  
Irina Negoescu  
Date : 2023.09.22  
13:38:11 -04'00'

CLIENT	ORDER	ROAD NUMBER		VIN (2NVY/4RKY...)		QTY
		FROM	TO	FROM	TO	
New York City Transit - NYCT - New York	L841	8094	8134	L82J2F45009	L82JXF45010	41
New York City Transit - NYCT - New York	L841	8184	8206	L82J1F45010	L82J0F45010	23
New York City Transit - NYCT - New York	L841	8252	8269	L82J2F45010	L82J2F45010	18
New York City Transit - NYCT - New York	L842	8090	8093	L82J4F45010	L82JXF45010	4
New York City Transit - NYCT - New York	L842	8207	8213	L82J6F45011	L82J7F45011	7
New York City Transit - NYCT - New York	L842	8399	8408	L82J6F45010	L82J2F45010	10
New York City Transit - NYCT - New York	L842	8318	8332	L82J9F45010	L82J7F45011	15
New York City Transit - NYCT - New York	L842	8359	8373	L82J9F45011	L82J3F45011	15
New York City Transit - NYCT - New York	L842	8409	8432	L82J5F45011	L82JXF45011	24
New York City Transit - NYCT - New York	L842	8481	8491	L82J1F45011	L82J8F45011	11
New York City Transit - NYCT - New York	L843	8135	8153	L82J5F45011	L82J9F45012	19
New York City Transit - NYCT - New York	L843	8214	8230	L82J9F45011	L82J1F45011	17
New York City Transit - NYCT - New York	L843	8270	8293	L82J0F45012	L82J7F45012	24
New York City Transit - NYCT - New York	L843	8333	8347	L82J9F45012	L82J1G97750	15
New York City Transit - NYCT - New York	L843	8374	8380	L82J3G97750	L82J9G97750	7
New York City Transit - NYCT - New York	L844	8381	8170	L82J0G97750	L82J0G97751	82
New York City Transit - NYCT - New York	L845	8171	8480	L82J2G97751	L82J6G97751	82
New York City Transit - NYCT - New York	LA73	8504	8507	L82J8J97764	L82J8J97764	4
New York City Transit - NYCT - New York	LA76	8508	8633	L82J9J97769	L82J8K97771	125
New York City Transit - NYCT - New York	LB78	8526	8526	L82J3K97769	L82J3K97769	1
New York City Transit - NYCT - New York	LC32	8634	8754	L82JXK97771	L82J5K97772	121

### Tools Required

- Standard tooling to handle M8 M12 fasteners
- Filler gauge to detect gap presence
- Transmission jack with tilt adjust plate



### WARNING

---

**FOLLOW YOUR INTERNAL SAFETY PROCEDURES.**

## PROCEDURE

- 1.1. Park the vehicle on an even surface with the transmission on neutral.
- 1.2. Apply the parking brake and set the master control switch to the **stop** position.
- 1.3. Set the battery disconnect switch in the battery compartment to the **off** position.
- 1.4. Raise the vehicle using a vehicle jack stands to provide sufficient place to access the underside.



### CAUTION

---

**For more information on the raising and lowering of the vehicle, refer to section 18: hoisting and towing of the Nova LFS maintenance manual. Respect your current internal safety procedures. Use the proper hoisting equipment for your safety.**

- 1.5. Using an appropriate lifting device, support the fuel tank in such a way that no bolt is binding once loosened.
- 1.6. Remove the exterior lower panel to access curbside hardware and loosen all six joints.
- 1.7. Clean surfaces between the engine rail and the fuel tank cradle.



### NOTE

---

**Make sure the fuel tank is pushed forward (towards the front of the vehicle) and more importantly against the engine rail and that no bolt is binding.**

- 1.8. Using a filler gauge, check for the gap between the frame and the cradle (see figure 1).

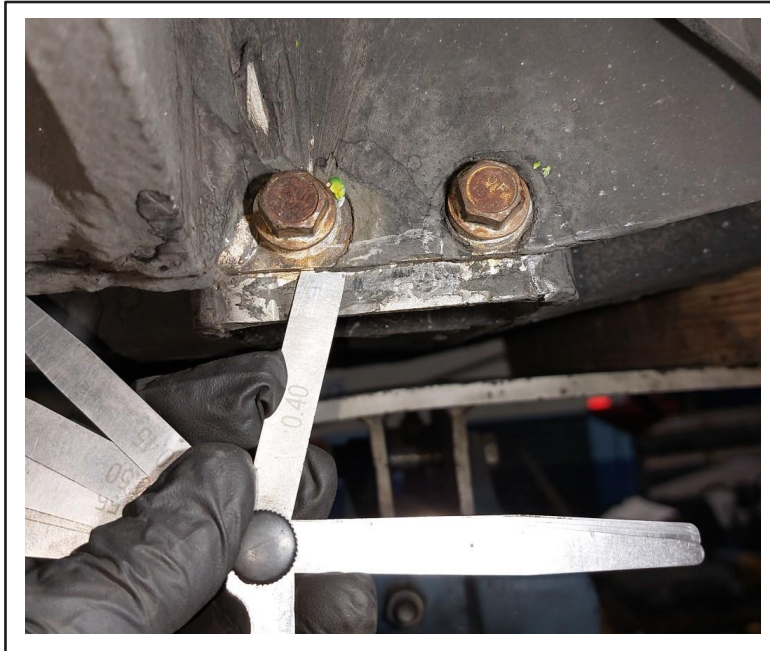


Figure 1 - Checking gap between the frame and cradle using filler gauge



**NOTE**

If there is no gap near the rear bolt and a gap near the front bolt, remove front bolt and insert shim N109634 between the cradle and the frame and reinstall bolt. No shim is required if gap is not found.

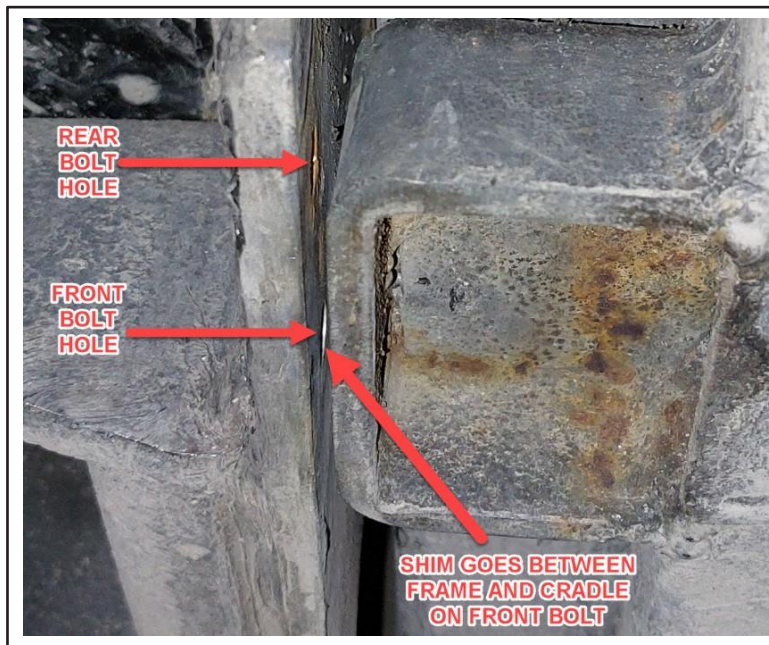


Figure 2 - Apply Shim between frame and cradle on front bolt

1.9. Torque fasteners to the values and sequence (see figure 3).

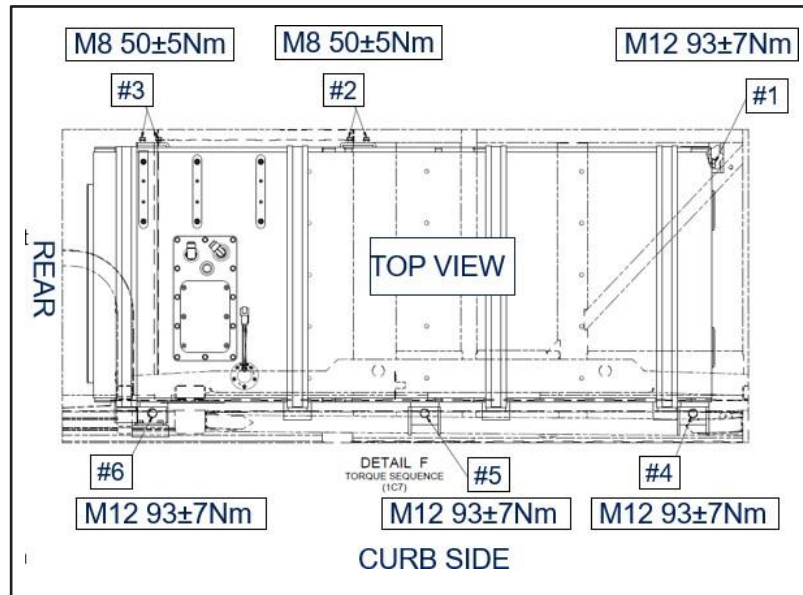


Figure 3 - Torque sequence for fuel tank cradle

1.10. Vehicle ready for service.❖