

Subject: Torque control and update to the appropriate torque value

Bulletin Type: Mandatory Field Conditions

Bulletin No: TS45-FM-2303

PQR No: 500000007025

Rev No: 00

Ref. No: 000700004354

Vehicle Model: TS45

Flat Rate Time / Code: 75 minute

Date of issue: 22.10.2023

Modify Before: 22.10.2024

What to do with off coming parts:

- Scrap
- Return
- Use with additional parts
- On consignment
- No off coming parts

What to do with outstanding parts of previous revision:

- Scrap
- Return
- Use with additional parts
- On consignment
- No outstanding parts

Description of the modification:

This bulletin aims to solve the problem: This bulletin will be implemented for torque control of alternator bolts and application of appropriate torque values on vehicles with EPA17 engine that come to the service for any operation.

Bulletin Responsible: Funda Bař

Published & Approved By: Evren Dinçel

SAFETY INSTRUCTIONS

1. Mechanical Requested Dress Code

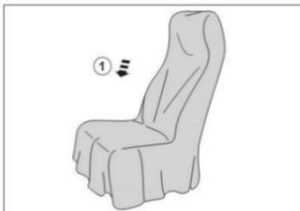


WARNING:

- Dress properly to avoid personal injury and damage to the vehicle

- ✓ Always wear protective clothing
- ✓ Do not wear any worn or loose-fitting clothing
- ✓ Remove jewelry before starting to work
- ✓ In case of long hair, use hairnet
- ✓ The illustration on the left shows some of the correct and incorrect clothing
- ✓ Sharp edged items should be avoided in order not to scratch vehicle (i.e. belts, watches, necklace)

2. Protect Seats when Mechanic Starts Working



- ✓ Seats, trimming, upholstery stuff and carpeting should be protected with appropriate coverings.

3. Welding on the Chassis

- Always disconnect the batteries (starting with the negative lead).
- Disconnect the connectors of electrical and electronic equipment (electronic control units, sensors and actuators) if they are less than 2 meters away from the chassis part to be welded or the earth terminal of the welding equipment.
- The earth terminal should never be attached to vehicle components such as engine, axles and springs. Arcing on these parts is not permitted, because of the risk of damage to bearings, springs, etc.
- The earth terminal must make good contact and be placed as close as possible to the part to be welded.
- Plastic pipes, rubber parts and parabolic springs should be well protected against welding spatter and temperatures higher than 70°.
- The contact switch must not be in the accessory or contact position. The contact key should be removed.
- Reconnect in reversed order of disconnecting. Ensure that a good earth connection is made between chassis, engine and cab

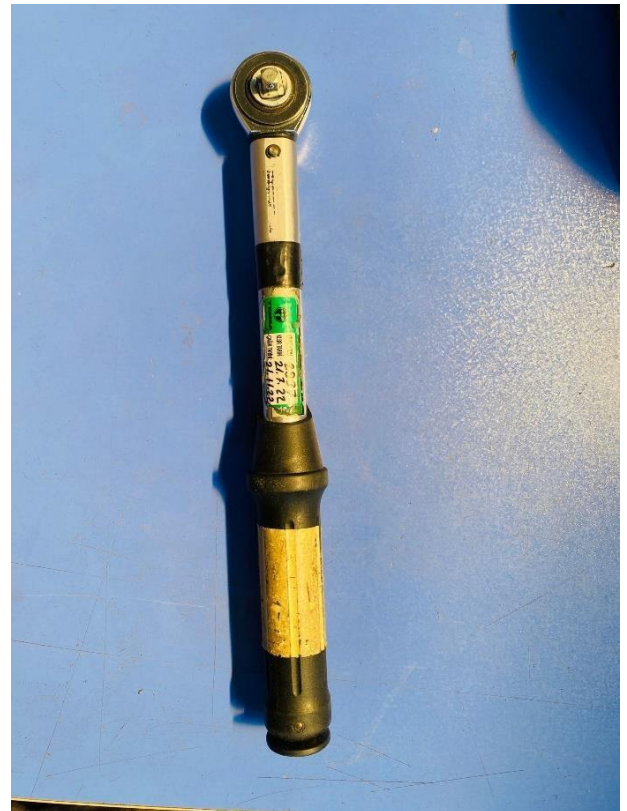
INCLUDED PARTS LIST

No	Part No	Part Name	Picture	Qty
1	-	-	-	-

OUT PART LIST

No	Part No	Part Name	Picture	Qty
1	-	-	-	-

TOOLS



Torque Wrench

TECHNICAL INSTRUCTIONS

1. Make the following preparations;
 - a-Take the vehicle to the service and stop the engine,
 - b-Before starting the process, be sure to turn off the vehicle switch. (See Figure-1).



Figure-1

2. By holding the appropriate area, the back cover is opened and the relevant area is visible.
(See Figure-2).



Figure-2

3. The current torque values of all bolts on the alternator, which will be detailed in the following articles, will be measured with the torque wrench and the bolts that do not comply with the updated torque values will be readjusted at the specified torque values. (See Figure-3).

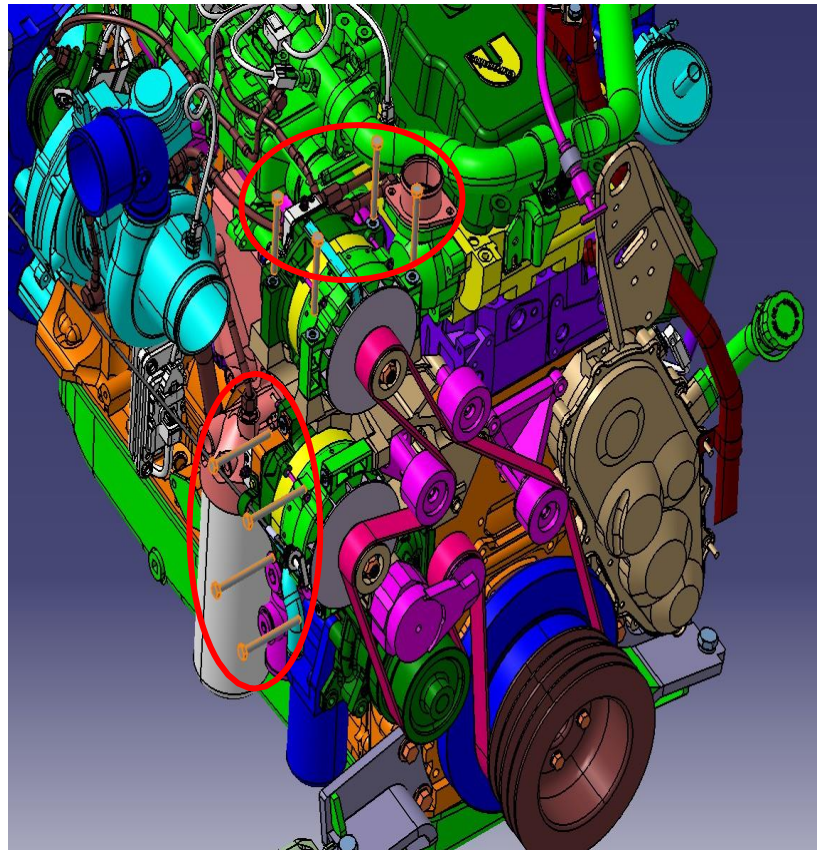
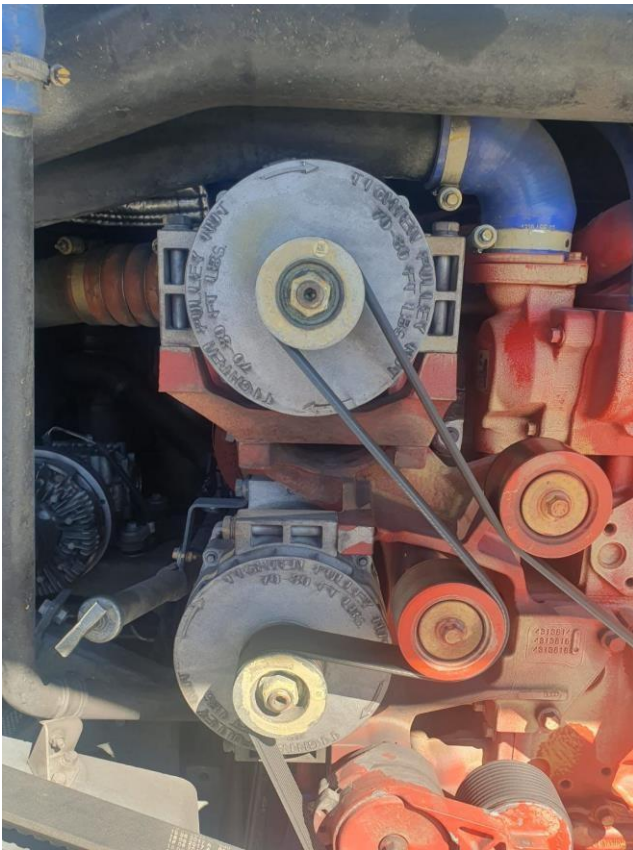
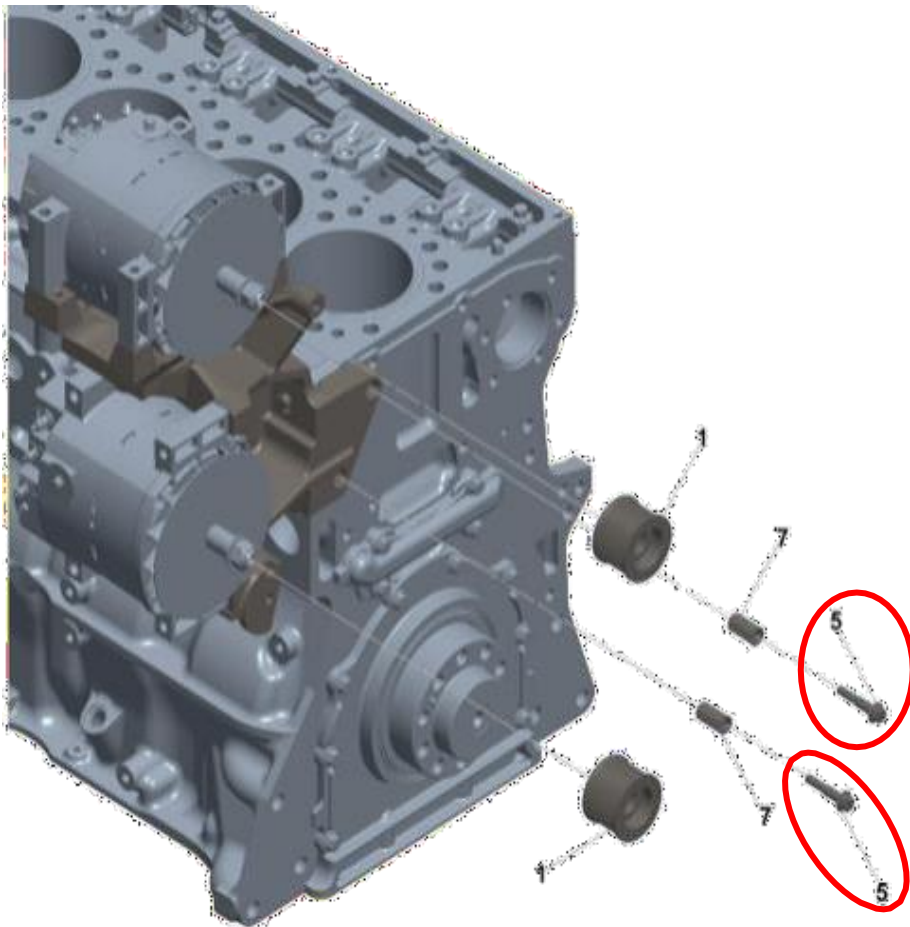


Figure-3

4. Alternator Bracket to Block Spacers

Measure the relevant bolts and equate them with the value specified in the table. (See Figure-4).



Description	Value
Cap screw part number	3900634
Fastener Diameter	M10
Torque	46 Nm

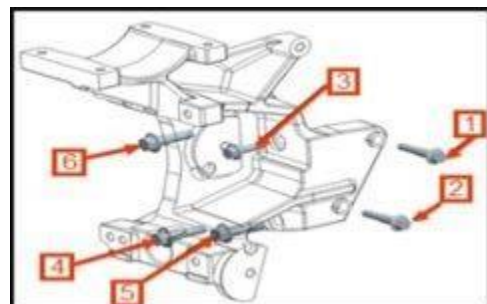


Figure-4

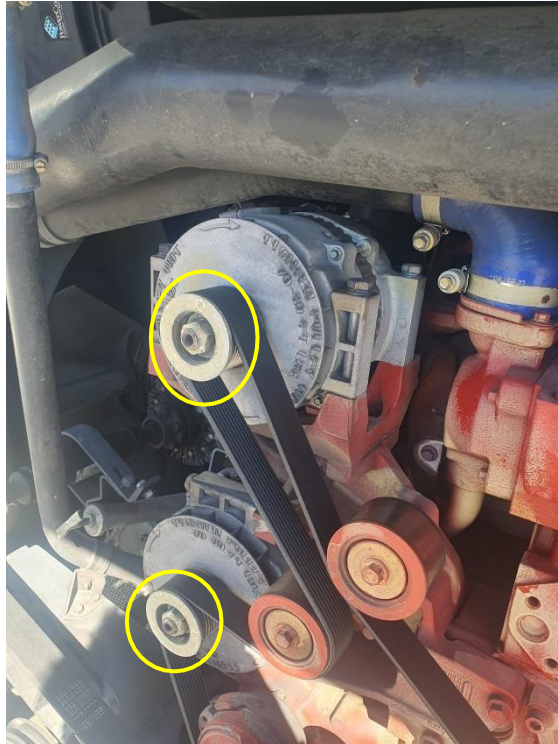
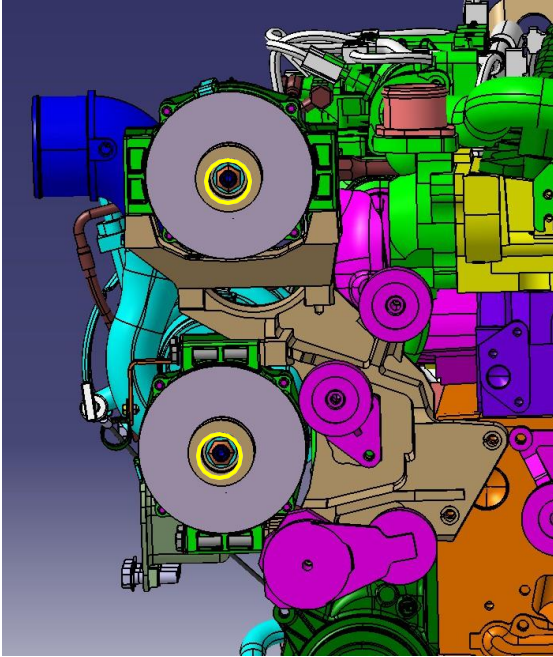


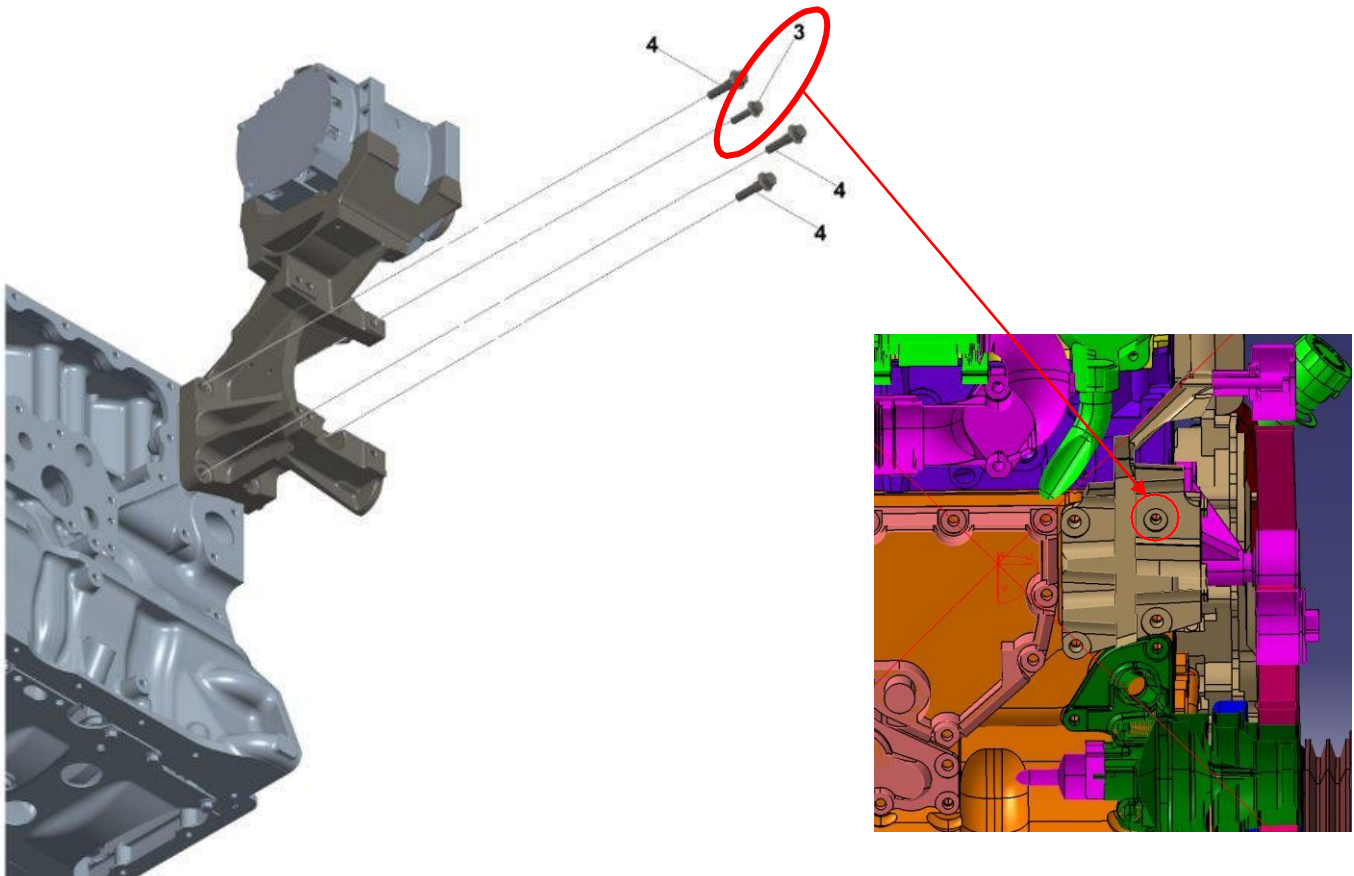
Figure-4

5. Alternator Bracket to Block

Measure the relevant bolts and equate them with the value specified in the table.

(Applicable only to the number 3)

(See Figure-5).



Description	Value
Cap screw part number	3089016
Fastener Diameter	M10
Torque	46 Nm

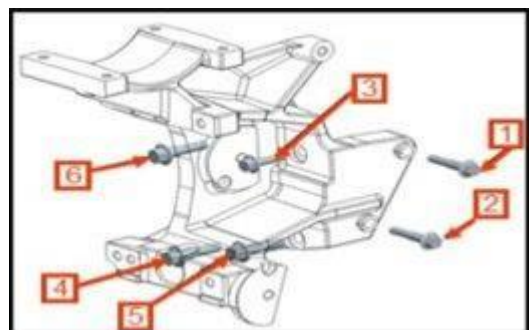
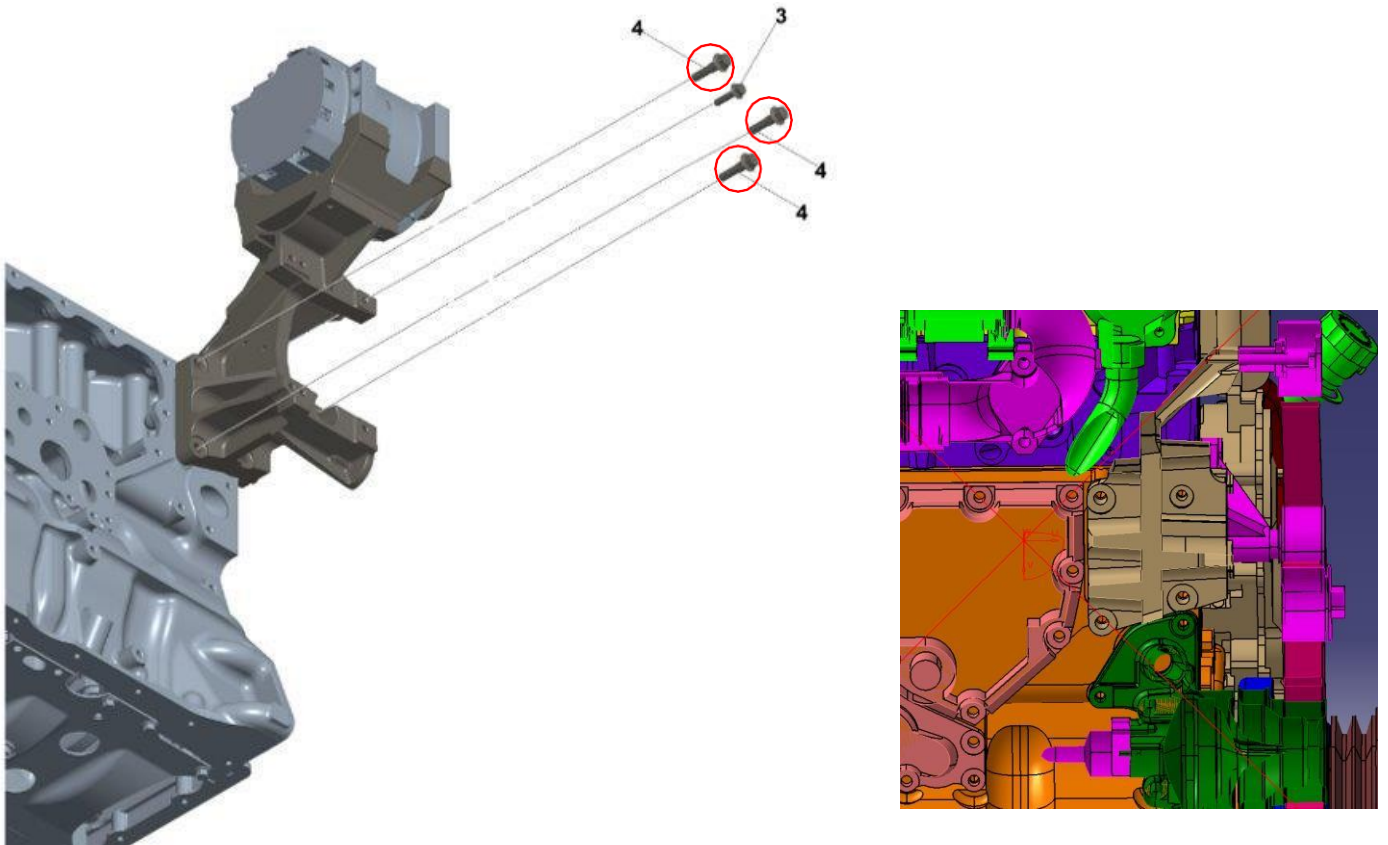


Figure-5

6. Bolt – 3093940 – Alternator Bracket to Block

Measure the relevant bolts and equate them with the value specified in the table.

(Applicable only to the numbered 4) (See Figure-6).



Description	Value
Cap screw part number	3093940
Fastener Diameter	M12
Torque	80 Nm

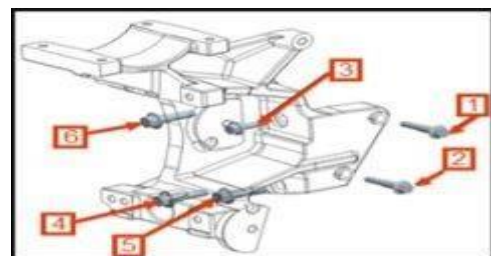
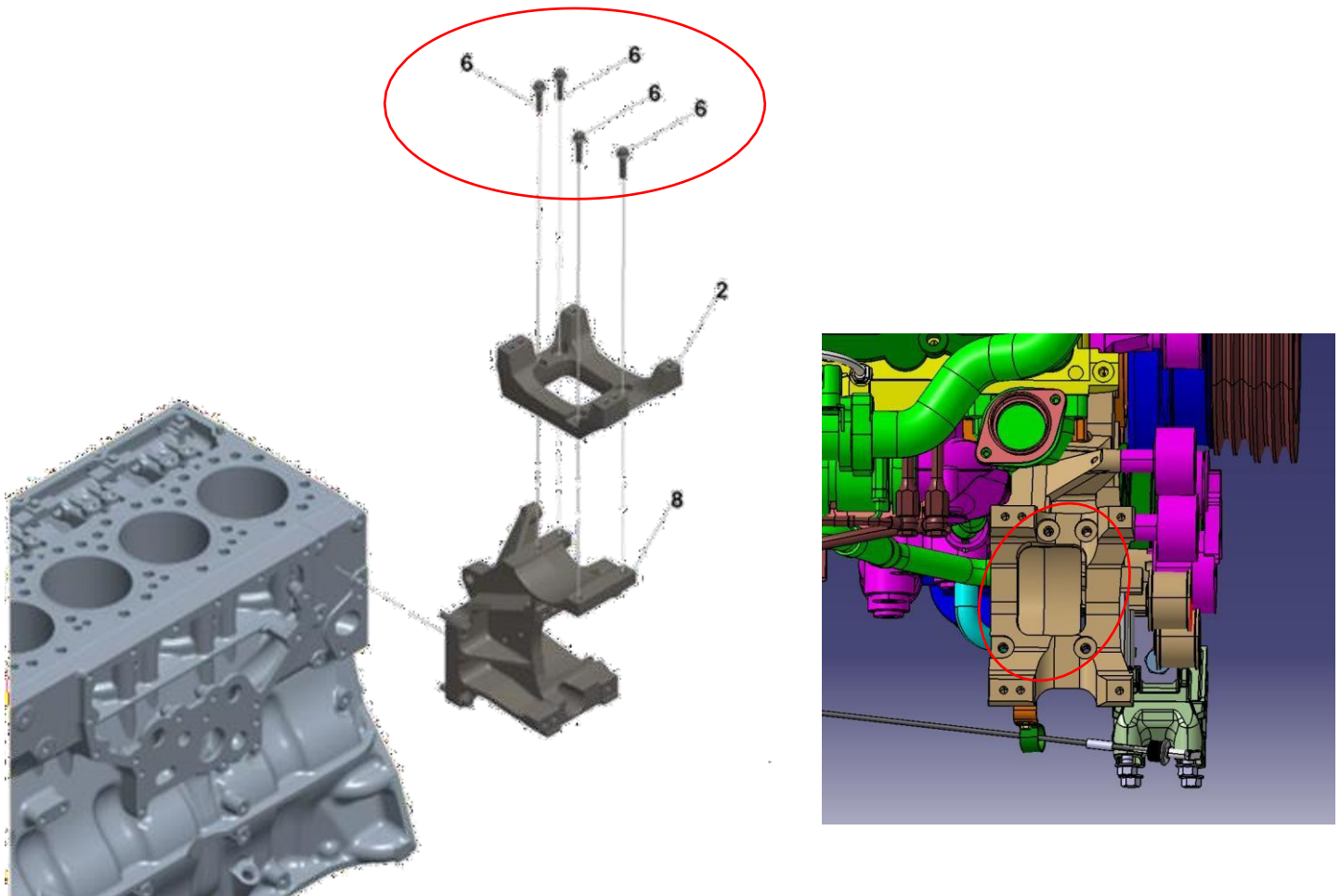


Figure-6

7. Mount to Bracket

Measure the relevant bolts and equate them with the value specified in the table. (See Figure-7)



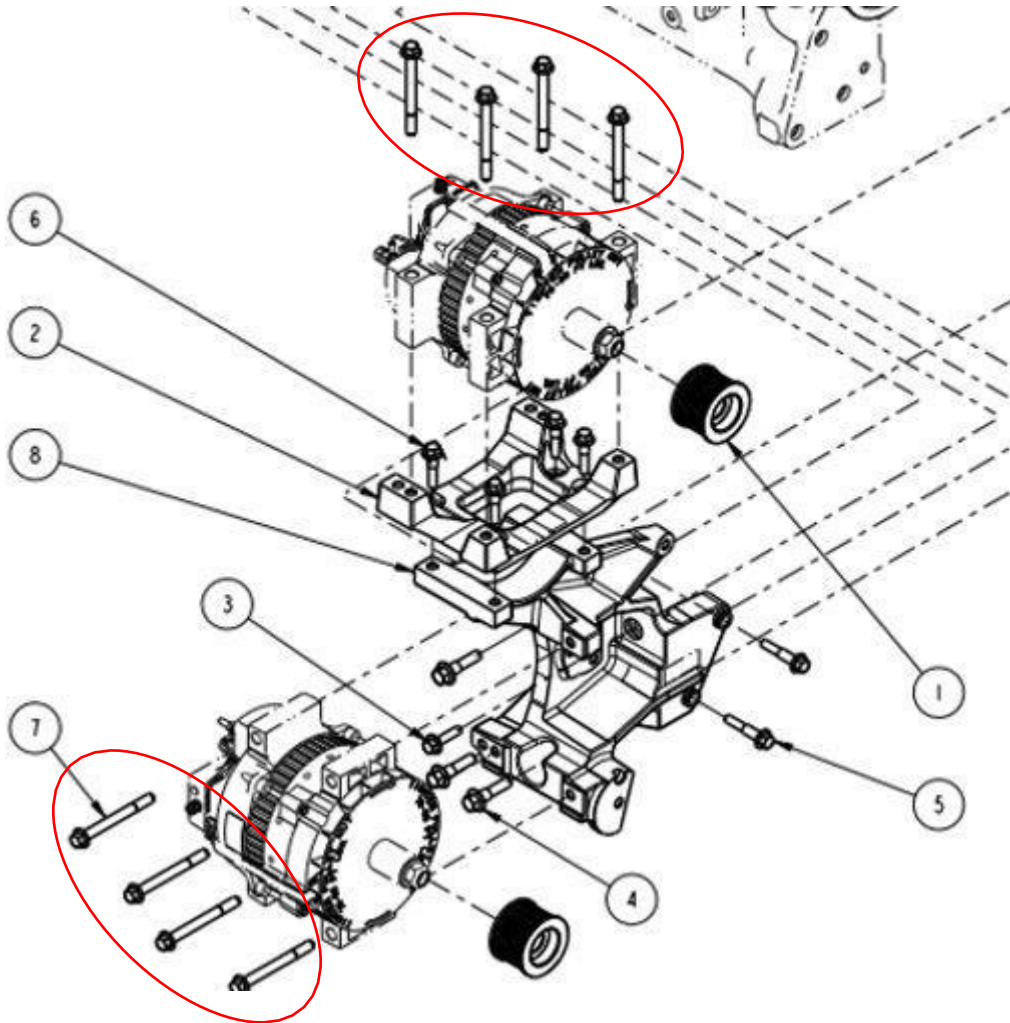
Description	Value
Cap screw part number	3903464
Fastener Diameter	M10
Torque	36 Nm

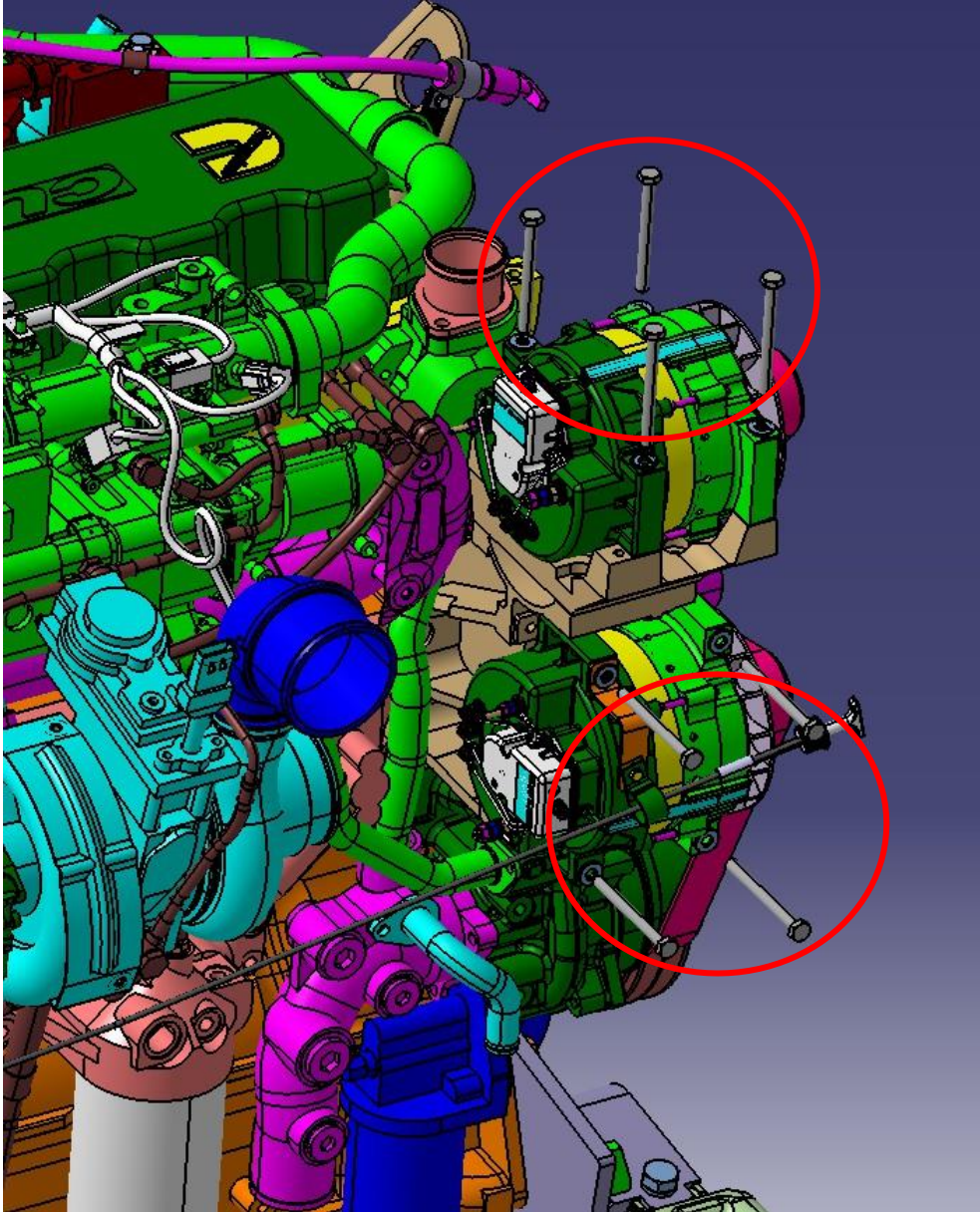
Note: Torque using crisscross pattern

Figure-7

8. Alternator to Alternator Bracket

Measure the relevant bolts and equate them with the value specified in the table. (See Figure-8).





Description	Value
Cap screw part number	3914407
Fastener Diameter	M10
Torque	36 Nm

Figure-8

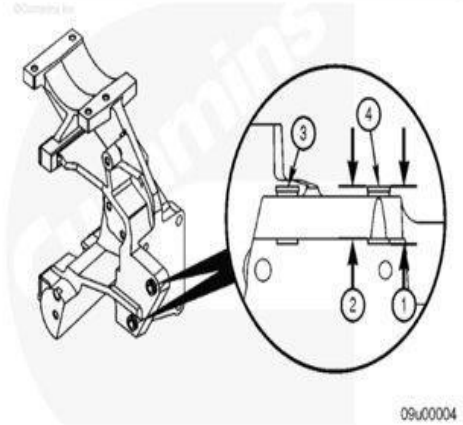
ADDITIONAL REQUIREMENTS

Complete the following measurements for spacers (3 and 4) located on the front of the bracket.

1. Measure the spacer installed in the bracket.
2. Measure from the front of the spacer to the underside of the bracket.

The difference between measurements 1 and 2 **must** be 3.0 mm [0.118 in]. If either spacer is **not** in the correct position, use a plastic hammer or equivalent device to move the spacer.

The differences between measurements 1 and 2 from both spacers need to be within 0.1 mm [0.0039 in] of each other to avoid tilt in the bracket.



09e00004

LARGE

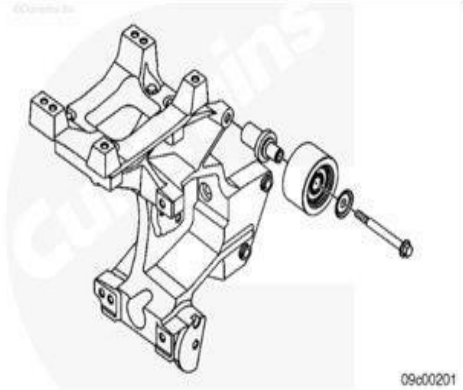
Assemble

Note : This step is for the hot side alternator/refrigerant compressor mounting bracket **only**.

Install the grooved refrigerant compressor idler pulley (1), dust shield, and mounting capscrew.

Torque Value: 36 n·m [27 ft·lb]

Note : The alternator/refrigerant compressor mounting bracket uses a grooved idler pulley. The dual alternator mounting bracket uses a non-grooved idler pulley. Make sure that the correct idler pulley is installed.



09e00201

LARGE

LABOR BREAKDOWN

Application	Time
Torque control and update to the appropriate torque value	75 minute
Total	75 minute

AFFECTED VEHICLES

No.	VIN	Country
1	NLTEJXM83J1000160	USA
2	NLTEJXM88J1000171	USA
3	NLTEJXM8XJ1000172	USA
4	NLTEJXM81J1000173	USA
5	NLTEJXM83J1000174	USA
6	NLTEJXM85J1000175	USA
7	NLTEJXM87J1000176	USA
8	NLTEJXM89J1000177	USA
9	NLTEJXM80J1000178	USA
10	NLTEJXM82J1000179	USA
11	NLTEJXM89J1000180	USA
12	NLTEJXM80J1000181	USA
13	NLTEJXM82J1000182	USA
14	NLTEJXM84J1000183	USA
15	NLTEJXM86J1000184	USA
16	NLTEJXM88J1000185	USA
17	NLTEJXM8XJ1000186	USA
18	NLTEJXM81J1000187	USA
19	NLTEJXM83J1000188	USA
20	NLTEJXM85J1000189	USA
21	NLTEJXM81J1000190	USA
22	NLTEJXM83J1000191	USA
23	NLTEJXM85J1000192	USA



TEMSA

SERVICE BULLETIN

24	NLTEJXM87J1000193	USA
25	NLTEJXM89J1000194	USA
26	NLTEJXM80J1000195	USA
27	NLTEJXM82J1000196	USA
28	NLTEJXM84J1000197	USA
29	NLTEJXM86J1000198	USA
30	NLTEJXM88J1000199	USA
31	NLTEJXM80J1000200	USA
32	NLTEJXM82J1000201	USA
33	NLTEJXM84J1000202	USA
34	NLTEJXM86J1000203	USA
35	NLTEJXM88J1000204	USA
36	NLTEJXM8XJ1000205	USA
37	NLTEJXM81J1000206	USA
38	NLTEJXM83J1000207	USA
39	NLTEJXM85J1000208	USA
40	NLTEJXM87J1000209	USA
41	NLTEJXM83J1000210	USA
42	NLTEJXM85J1000211	USA
43	NLTEJXM87J1000212	USA
44	NLTEJXM89J1000213	USA
45	NLTEJXM80J1000214	USA
46	NLTEJXM82J1000215	USA
47	NLTEJXM84J1000216	USA
48	NLTEJXM86J1000217	USA
49	NLTEJXM88J1000218	USA
50	NLTEJXM8XJ1000219	USA
51	NLTEJXM84K1000220	USA
52	NLTEJXM86K1000221	USA
53	NLTEJXM88K1000222	USA
54	NLTEJXM81J1000223	USA
55	NLTEJXM81K1000224	USA
56	NLTEJXM85J1000225	USA
57	NLTEJXM87J1000226	USA
58	NLTEJXM89J1000227	USA
59	NLTEJXM80J1000228	USA
60	NLTEJXM82J1000229	USA
61	NLTEJXM87K1000230	USA
62	NLTEJXM89K1000231	USA
63	NLTEJXM80K1000232	USA
64	NLTEJXM82K1000233	USA
65	NLTEJXM84K1000234	USA
66	NLTEJXM88J1000235	USA
67	NLTEJXM8XJ1000236	USA



TEMSA

SERVICE BULLETIN

68	NLTEJXM81J1000237	USA
69	NLTEJXM81K1000238	USA
70	NLTEJXM83K1000239	USA
71	NLTEJXM8XK1000240	USA
72	NLTEJXM81K1000241	USA
73	NLTEJXM83K1000242	USA
74	NLTEJXM85K1000243	USA
75	NLTEJXM87K1000244	USA
76	NLTEJXM89K1000245	USA
77	NLTEJXM80K1000246	USA
78	NLTEJXM82K1000247	USA
79	NLTEJXM84K1000248	USA
80	NLTEJXM86K1000249	USA
81	NLTEJXM82K1000250	USA
82	NLTEJXM84K1000251	USA
83	NLTEJXM86K1000252	USA
84	NLTEJXM88K1000253	USA
85	NLTEJXM8XK1000254	USA
86	NLTEJXM81K1000255	USA
87	NLTEJXM83K1000256	USA
88	NLTEJXM85K1000257	USA
89	NLTEJXM87K1000258	USA
90	NLTEJXM89K1000259	USA
91	NLTEJXM85K1000260	USA
92	NLTEJXM87K1000261	USA
93	NLTEJXM89K1000262	USA
94	NLTEJXM80K1000263	USA
95	NLTEJXM82K1000264	USA
96	NLTEJXM84K1000265	USA
97	NLTEJXM86K1000266	USA
98	NLTEJXM88K1000267	USA
99	NLTEJXM8XK1000268	USA
100	NLTEJXM81K1000269	USA
101	NLTEJXM88K1000270	USA
102	NLTEJXM8XK1000271	USA
103	NLTEJXM81K1000272	USA
104	NLTEJXM83K1000273	USA
105	NLTEJXM85K1000274	USA
106	NLTEJXM87K1000275	USA
107	NLTEJXM89K1000276	USA
108	NLTEJXM80K1000277	USA
109	NLTEJXM82K1000278	USA
110	NLTEJXM84K1000279	USA
111	NLTEJXM80K1000280	USA



TEMSA

SERVICE BULLETIN

112	NLTEJXM82K1000281	USA
113	NLTEJXM84K1000282	USA
114	NLTEJXM86K1000283	USA
115	NLTEJXM88K1000284	USA
116	NLTEJXM8XK1000285	USA
117	NLTEJXM81K1000286	USA
118	NLTEJXM83K1000287	USA
119	NLTEJXM85K1000288	USA
120	NLTEJXM87K1000289	USA
121	NLTEJXM83K1000290	USA
122	NLTEJXM85K1000291	USA
123	NLTEJXM96K1000292	USA
124	NLTEJXM98K1000293	USA
125	NLTEJXM89L1000294	USA
126	NLTEJXM80L1000295	USA
127	NLTEJXM82L1000296	USA
128	NLTEJXM84L1000297	USA
129	NLTEJXM86L1000298	USA
130	NLTEJXM88L1000299	USA
131	NLTEJXM80L1000300	USA
132	NLTEJXM82L1000301	USA
133	NLTEJXM84L1000302	USA
134	NLTEJXM86L1000303	USA
135	NLTEJXM88L1000304	USA
136	NLTEJXM8XL1000305	USA
137	NLTEJXM81L1000306	USA
138	NLTEJXM92L1000307	USA
139	NLTEJXM94L1000308	USA
140	NLTEJXM96L1000309	USA
141	NLTEJXM92L1000310	USA
142	NLTEJXM85L1000311	USA
143	NLTEJXM87L1000312	USA
144	NLTEJXM89L1000313	USA
145	NLTEJXM80L1000314	USA
146	NLTEJXM82L1000315	USA
147	NLTEJXM82M1000316	USA
148	NLTEJXM86L1000317	USA
149	NLTEJXM86M1000318	USA
150	NLTEJXM88M1000319	USA
151	NLTEJXM86L1000320	USA
152	NLTEJXM88L1000321	USA
153	NLTEJXM8XL1000322	USA
154	NLTEJXM81L1000323	USA
155	NLTEJXM81M1000324	USA



TEMSA

SERVICE BULLETIN

156	NLTEJXM83M1000325	USA
157	NLTEJXM85M1000326	USA
158	NLTEJXM87M1000327	USA