



**IMPORTANT SERVICE
INFORMATION FOR:**

- ✓ SERVICE MANAGER
- ✓ SERVICE ADVISOR
- ✓ WARRANTY PERSONNEL

BULLETIN NUMBER:
WB11-X-001A

ISSUE DATE:
OCTOBER 2023

GROUP:
ENGINE

CONTROL MODULE REPROGRAMMING – ISUZU POLICY - ENGINE AND TRANSMISSION SERIAL NUMBERS

AFFECTED VEHICLES

- All Isuzu N-Series
- All GMC and Chevrolet W-Series
- All Isuzu F/H-Series
- All GMC and Chevrolet C/T-Series equipped with Isuzu diesel engines.

This bulletin supersedes warranty bulletin WB11-X-001. This bulletin is being revised to update content. Please disregard previous bulletin WB11-X-001.

INFORMATION

POLICY

The following information is provided to clearly explain Isuzu's policy for control module (engine, transmission, antilock brake, instrument panel, body control, power interface, etc.) reprogramming. Control module calibrations are regularly updated for many reasons. These reasons may include, but are not limited to: model year change, software corrections, certification compliance, product improvement and specific application requirements. However, the mere existence of a newer control module calibration does not necessarily mean that warranty coverage exists or that the calibration must be installed. It is not our policy to update control modules, under warranty or after warranty, based solely on the availability of a newer calibration file. Below are our guidelines for reprogramming control modules.

1. Acceptable reasons for reprogramming a control module:
 - a. Control module replacement – Some replacement control modules require reprogramming at time of installation. This also requires DSPM authorization.
 - b. Service bulletin direction – In certain cases a service bulletin may be released identifying a specific complaint that can be addressed by reprogramming a control module. This type of reprogramming may only be performed if the customer complains of the specific condition outlined in the bulletin.
 - c. Campaign – Specific vehicles may be flagged under a campaign for control module reprogramming. Refer to IVIS to confirm affected vehicle.

Reprogramming a control module for any reasons other than the ones listed above is not warrantable. Warranty claims submitted that do not comply with this policy will result in a warranty claim chargeback.


SERIAL NUMBERS

Certain control modules require the serial number information to be programmed into them for proper component recognition and operation. Below are images of serial number plates and their locations to help technicians identify the correct serial number when they are required for programming.

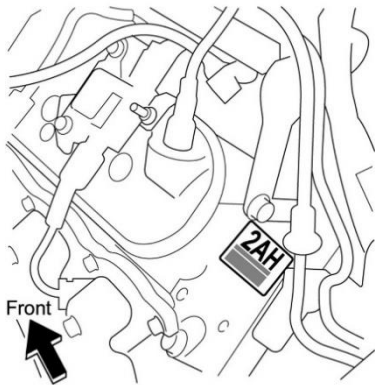
Engine Serial Number Requirements (ESN)

1. Diesel vehicles over 14K GVW -- MY2014 and later.
 - a. A 4HK1 ESN is 6 characters long.
2. The ESN is programmed into the ECM for Gasoline and KL8/LC8 (Alternative Fuel Capable) 2013MY and later.
 - a. An ESN is not required but is programmed into the ECM on 12K GVW vehicles.
 - b. An ESN *is* required to be programmed into the ECM on 14.5K GVW vehicles.
 - c. The Factory Installed ESN is 15 or 16 characters long, depending on the Model Year
3. 6.0L remanufactured engine ESNs are 8 characters long.
4. The ESN for a 6.6L Gasoline engine is 16 characters long.

Diesel Engines ESN Locations

	
4HK1: The engine number is stamped on the right-side front part of the engine block.	4HK1: Detail

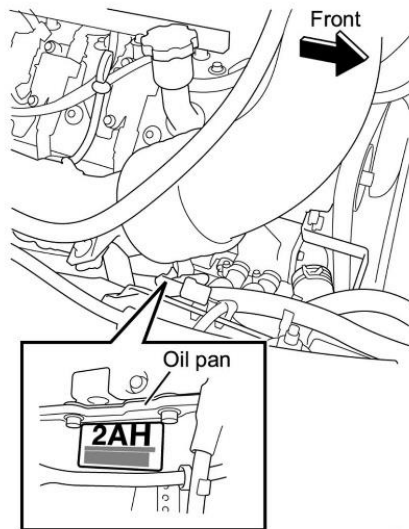
Gasoline Engines ESN Locations



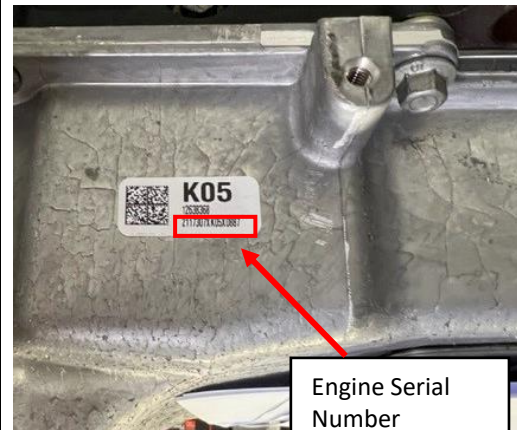
Engine Serial
Number
EXAMPLE ONLY

6.0/6.6 Gasoline Original Equipment:
The engine serial number is located on the left-side rear part of engine block and the right-side front part of the oil pan.
Left-side Rear

6.0L Gasoline Original Equipment:
Detail



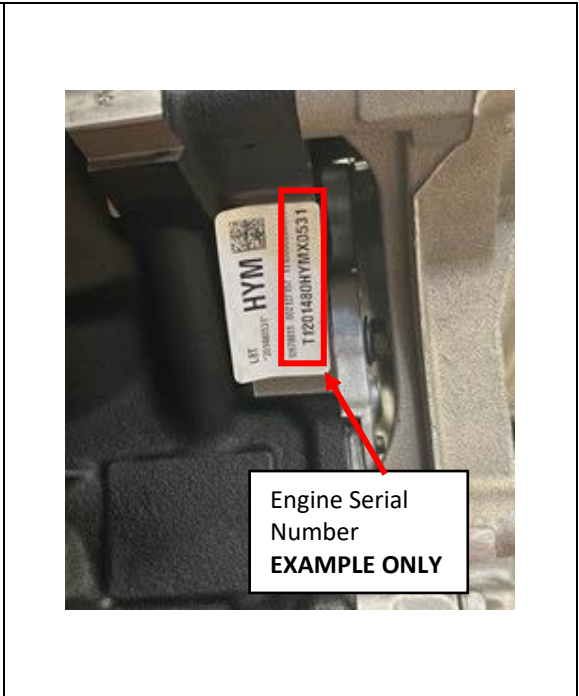
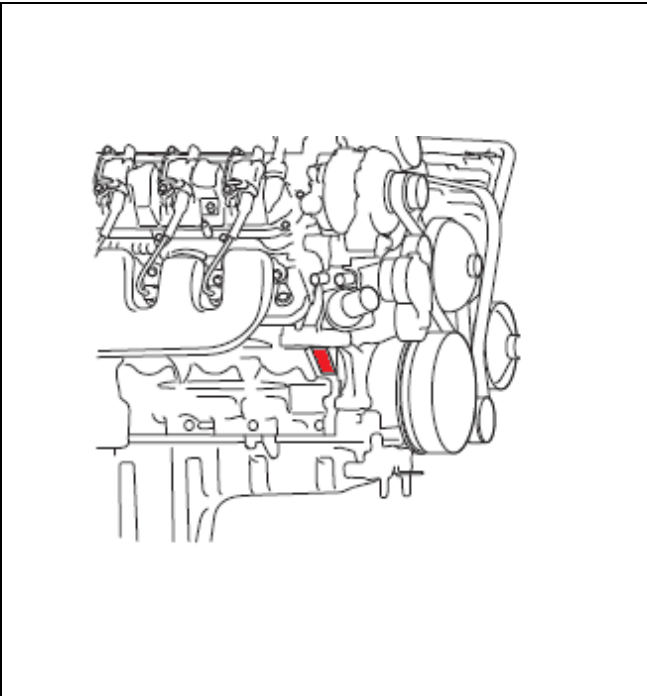
LNUC01



Engine Serial
Number
EXAMPLE ONLY

6.0 Gasoline Original Equipment:
Right-side Front

6.0 Gasoline Original Equipment:
Detail



Engine Serial
Number
EXAMPLE ONLY

**6.6 Gasoline Original Equipment:
Right-side Front**

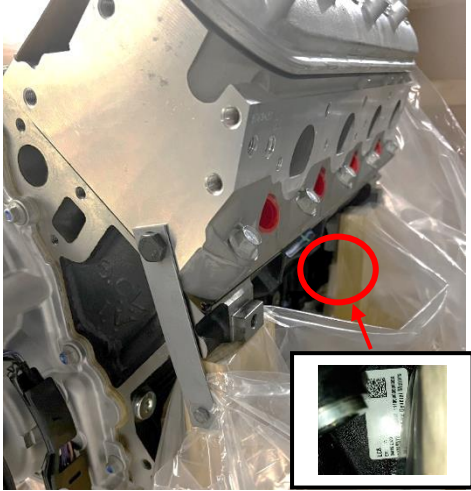
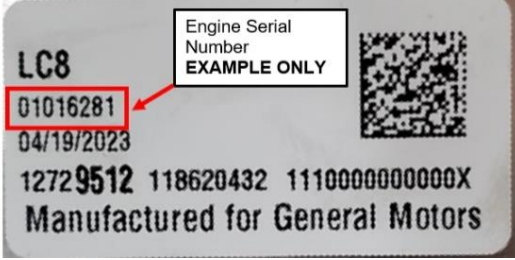
**6.6 Gasoline Original Equipment:
Detail**



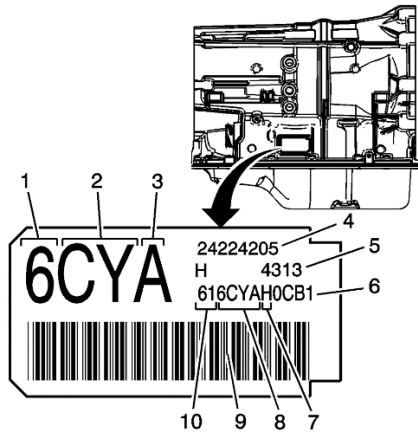
Engine Serial
Number
EXAMPLE ONLY

6.0L Gasoline Only Remanufactured

**6.0L Gasoline Only
Remanufactured Detail**

	
<p>6.0L Gasoline Alt Fuel (KL8/LC8)</p>	<p>6.0L Gasoline Alt Fuel (KL8/LC8) Detail</p>

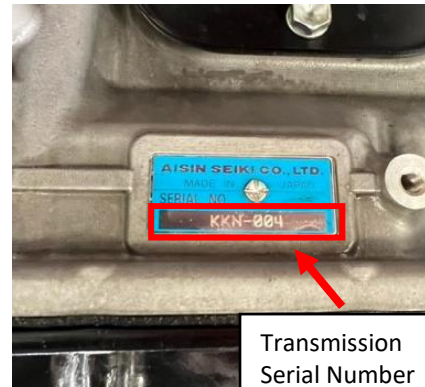
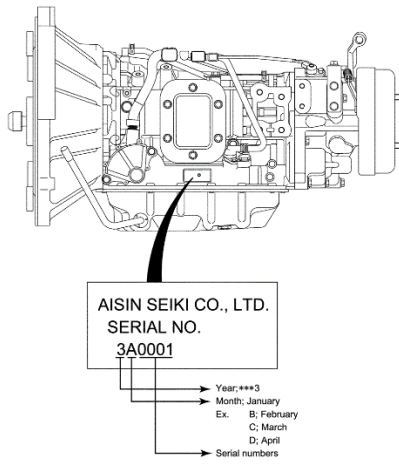
Automatic Transmissions Serial Number Locations



Transmission
Serial Number
EXAMPLE ONLY

6L90, 4L80 Transmissions:
(6) Sequential Serial Number

6L90, 4L80 Transmissions:
Detail



Transmission
Serial Number
EXAMPLE ONLY

A450, A460, A465 Transmissions:
Located on left side

A450, A460, A465 Transmissions:
Detail