



Technical Service Bulletin

GROUP CAMPAIGN	NUMBER 23-01-003G-1
DATE OCTOBER, 2023	MODEL(S) G70 (IK) G80 (RG3) GV70 (JK1) GV80 (JX1)

SUBJECT: TORQUE CONVERTER REPLACEMENT
(SERVICE CAMPAIGN T27G)

This TSB supersedes TSB 23-01-003G to add additional instructions for installing the torque converter (Steps 3~5).

DESCRIPTION: Some of the applicable vehicles may experience torque converter internal rivet damage and cracks. Symptoms may include a scratching noise, and in rare cases, an engine stall at idle or at creep speeds. This bulletin describes the procedure to replace the torque converter.

★ IMPORTANT

Dealers must perform this Service Campaign on all affected vehicles prior to customer retail delivery and whenever an affected vehicle is in the shop for any maintenance or repair.

When a vehicle arrives at the Service Department, access Hyundai Motor America's "Warranty Vehicle Information" screen via WEBDCS to identify open Campaigns.

APPLICABLE VEHICLES: (Certain):

- 2023 G70 (IK) 2.0T Produced from 05/11/2022 – 06/13/2022
- 2023 G80 (RG3) 2.5T Produced from 04/20/2022 – 06/02/2022
- 2023 GV70 (JK1) 2.5T Produced from 05/11/2022 – 05/27/2022
- 2023 GV80 (JX1) 2.5T Produced from 04/12/2022 – 06/08/2022

PARTS INFORMATION:

Model	Part Name	Part Number		Remarks
		Previous	New	
G70 (IK) 2.0T	Torque converter	45100-47750	45100-47750QQH	Order 1 torque converter according to model
G80 (RG3) 2.5T		45100-47810	45100-47810QQH	
GV70 (JK1) 2.5T		45100-47840	45100-47840QQH	
GV80 (JX1) 2.5T		45100-47810	45100-47810QQH	
All	SP-IV-RR ATF	00232-19052		4 quarts

WARRANTY INFORMATION:

Model	Drive	Op. Code	Operation	Op. Time	Causal Part	Nature Code	Cause Code
G80 (RG3)	4WD	20D085R0	Torque converter replacement	5.2 M/H	45100-47810QQH	I14	ZZ4
G80 (RG3)	2WD	20D085R1		4.8 M/H			
GV80 (JX1)	4WD	20D085R2		5.7 M/H	45100-47810QQH		
GV80 (JX1)	2WD	20D085R3		5.5 M/H			
GV70 (JK1)	4WD	20D085R4	ATF supplement and oil level check	6.1 M/H	45100-47840QQH		
GV70 (JK1)	2WD	20D085R5		5.9 M/H			
G70 (IK)	4WD	20D085R6		5.7 M/H	45100-47750QQH		
G70 (IK)	2WD	20D085R7	5.5 M/H				

NOTE 1: Submit Claim on Campaign Claim Entry Screen

NOTE 2: If a part that is not covered by this campaign is found in need of replacement while performing this service campaign and the affected part is still under warranty, submit a separate claim using the same repair order. If the affected part is out of warranty, submit a Prior Approval request for goodwill consideration prior to performing the work.

NOTE 3: Four quarts of ATF will be reimbursed via each of the Op Codes.

NOTE 4: This TSB includes Repair Validation photos. Op times include VIN, Mileage and Repair validation photos as outlined in the Digital Documentation Policy.

NOTE 5: The incident parts are subject to callback through the normal Warranty Technical Center (WTC) parts return process. **The claim is subject to debit if the part is not returned.**

SERVICE PROCEDURE:

STUI



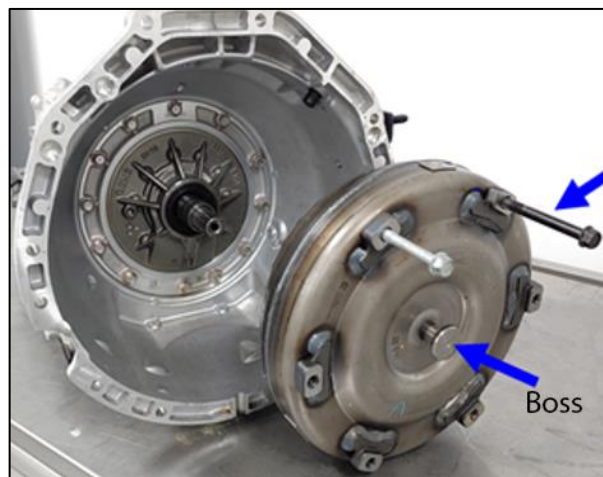
This TSB includes Repair Validation photos. Refer to the latest Warranty Digital Documentation Policy for requirements.

1. Record the customer's radio stations.
Disconnect the negative battery cable.
Remove the plastic undercover below the transmission.

2. Remove the transmission (A).
Refer to the applicable shop manual, **Automatic Transmission System > Automatic Transmission System > Automatic Transmission > Repair procedures.**



3. Install 2 bolts to the lugs on the torque converter.
Lift up on the bolts while rotating the torque converter in both directions and carefully pull the torque converter out of the housing.
Inspect the oil seal to confirm the seal was not damaged when the torque converter was removed. If the seal is damaged, the transmission must be replaced.



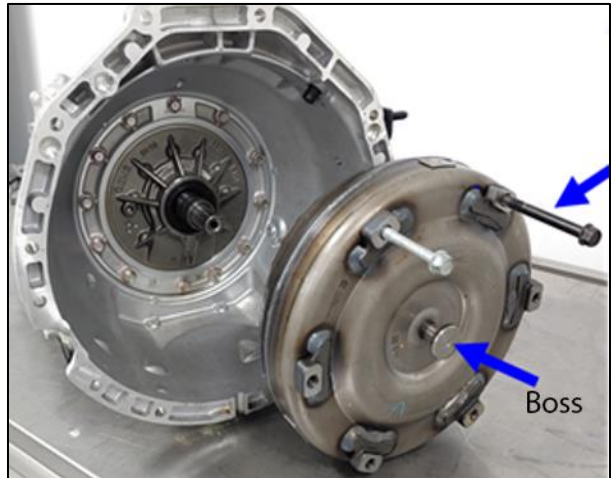
i Information

If transmission replacement is needed, a Prior Approval (PA) request is required.

4. Lay the removed torque converter on a bench.
Use a paper towel or shop rag to wipe off the residual ATF.



5. Install 2 bolts to the lugs on the new torque converter.
Lift up on the bolts and carefully install the torque converter into the housing.
Continue to pull up on one of the bolts to support the torque converter and carefully push on the boss to install the torque converter into the converter housing.



6. Continue to pull up on one of the bolts and rotate the torque converter in both directions while pushing inward on the boss until the torque converter is fully installed in the converter housing to the specified depth.

The depth is measured from the bolt hole on the lug to the edge of the transmission case.

Specification: Approximately 1.0 inch (26.4mm)

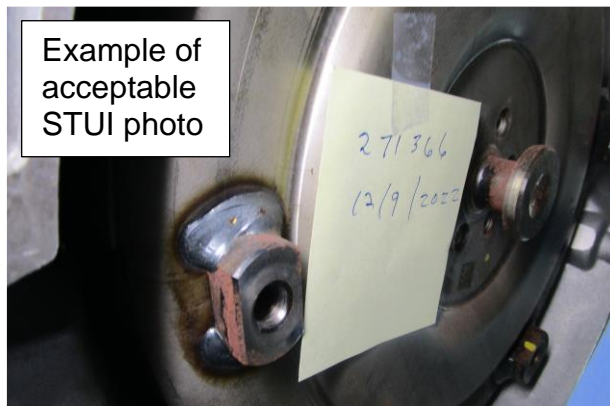


7.

STUI



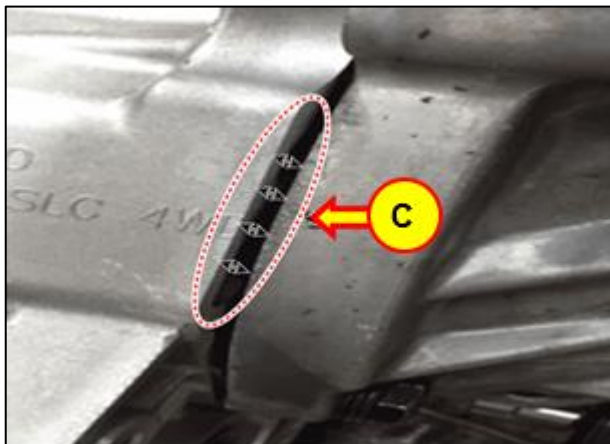
Using STUI, take a photo of the new torque converter with the last 6 digits of the VIN and the date of repair on a piece of paper. Upload the photo to STUI.



8. Reinstall the transmission.

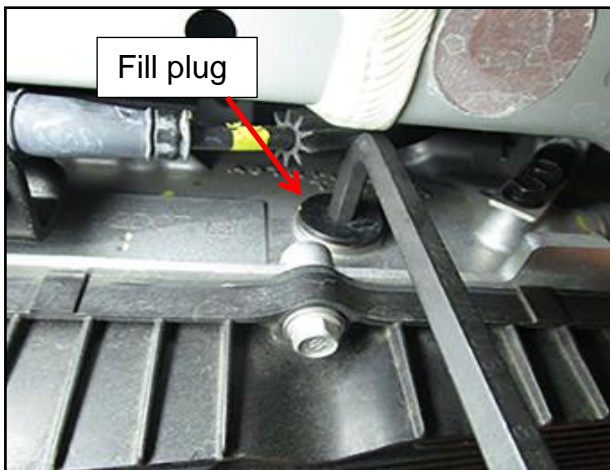
Carefully push the transmission into position until there is no gap between the engine and transmission.

NOTE: In the event of a gap (C), do not force the transmission installation with fastening bolts and an impact gun. Instead, repeat Step 6 and fully install the torque converter in the housing.



9. Shift to **Neutral (N)** and lift the vehicle on a hoist.

Use an 8mm or 5/16" hex wrench and remove the fill plug and washer.



10. Remove the oil level check plug (A).

Use a fluid pump or suction gun to add **SP-IV-RR** ATF through the fill plug until ATF flows from the oil level check plug (A).

Reinstall the oil level check plug (A).

Reinstall the fill plug.

NOTICE

Use only **SP-IV-RR** ATF, P/N **00232-19052**.



11. Attach a GDS and select vehicle, **Data Analysis, A/T** menu and **Oil Temperature Sensor**.

Move the shift lever from **P-R-D** and back to **N**. Drive the vehicle until the ATF is at the low end of the range of 122~140°F (50~60°C).

12. Start the engine, shift to **Neutral (N)** and raise the vehicle on a hoist.

Remove the fill plug and oil level check plug (A).

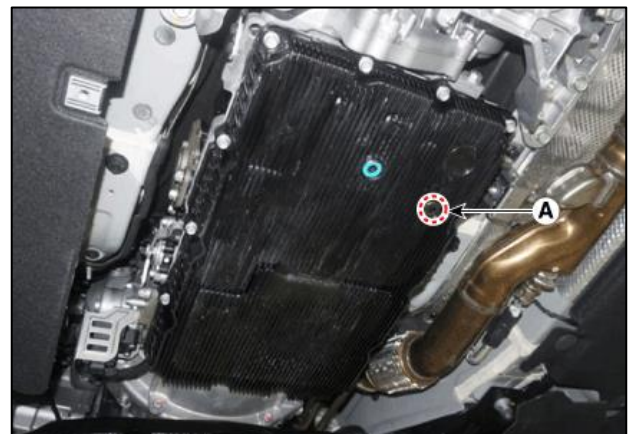
Add **SP-IV-RR** ATF through the fill plug until ATF flows out the oil level check plug in a thin steady stream.

Reinstall the oil level check plug (A).

Torque: 16~18 lb-ft (2.3~2.5 kgf.m, 22~24 N.m)

Reinstall the fill plug and washer.

Torque: 25~33 lb.ft (3.5~4.5 kgf.m, 34~44 N.m)



13. **i** **Information**

- If an automatic transmission replacement was required as mentioned in step 3, transfer the oil pressure characteristics according to TSB 21-AT-012G.

14. Reinstall the plastic undercover below the transmission.

Reconnect the negative battery cable.

Input the customer's radio stations.

Drive the vehicle to confirm proper operation of the transmission.