



# INSTRUCTION TO SERVICE

ITS: 60867		11/28/2023
<b>SECTION:</b>	600 – Customer Options	
<b>WRITTEN BY:</b>	Jeff Kosheluk	
<b>SUBJECT:</b>	R & R with different spacer to allow for proper clearance of the farebox unit.	
<b>ISSUE:</b>	Current CRT D-4520 factory installed farebox base, once farebox unit installed is contacting dash area in several locations.	
<b>SUMMARY:</b>	Install new farebox spacer plate to allow for proper clearance with no contact on the dash area.	

# ITS60867

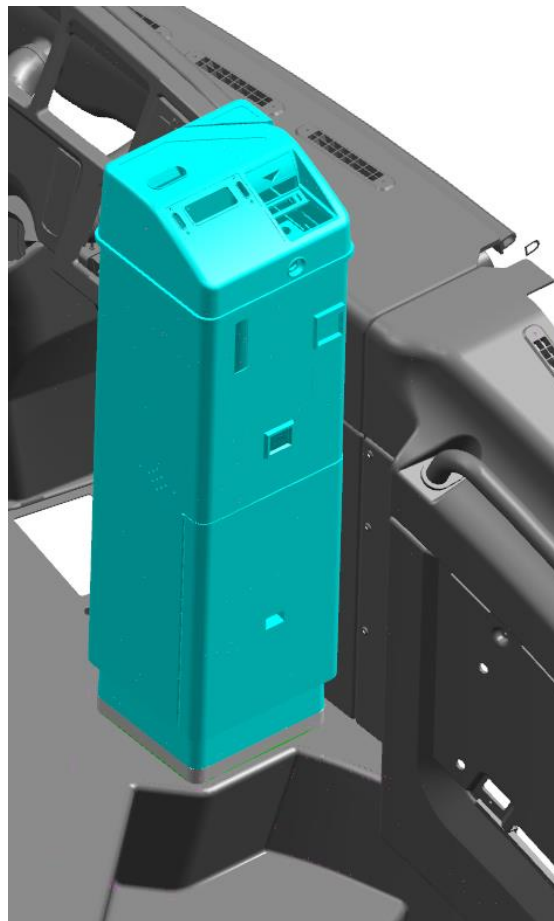
Ref. NHTSA Recall No.	Ref. Transport Canada Recall No.
Not Applicable	Not Applicable

**THIS ITS DOCUMENT SHOULD BE RETAINED AND REFERRED TO FOR FUTURE MAINTENANCE UNTIL THE NEW FLYER PARTS AND/OR SERVICE MANUAL IS UPDATED TO REFLECT WORK DONE AS A RESULT OF THIS DOCUMENT. ENSURE THAT THIS DOCUMENT IS AVAILABLE FOR PARTS AND MAINTENANCE STAFF GOING FORWARD.**

**SAFETY PRECAUTIONS MUST BE FOLLOWED ACCORDING TO ACCEPTED INDUSTRY STANDARDS AND LOCAL/PROPERTY REQUIREMENTS.**

**PROCEDURE:**

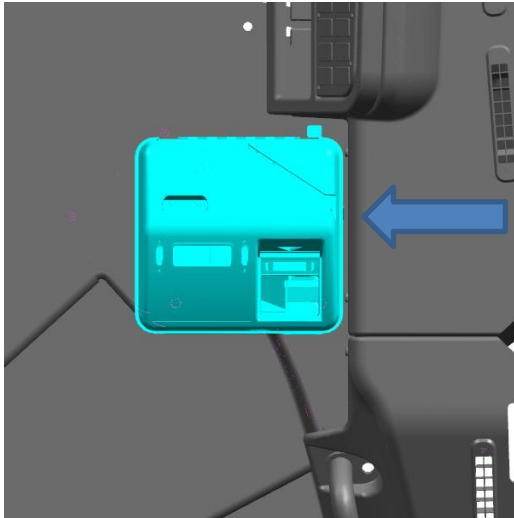
1. Park bus on a leveled surface and apply parking brake. Place wheel chocks underneath the front wheels.
2. Turn the main battery disconnect switch to the "OFF" position.
3. Locate the farebox unit on the interior of the coach. Refer to Figure 1.



**FIGURE 1: FAREBOX UNIT – PARALLEL TO DASH AREA**

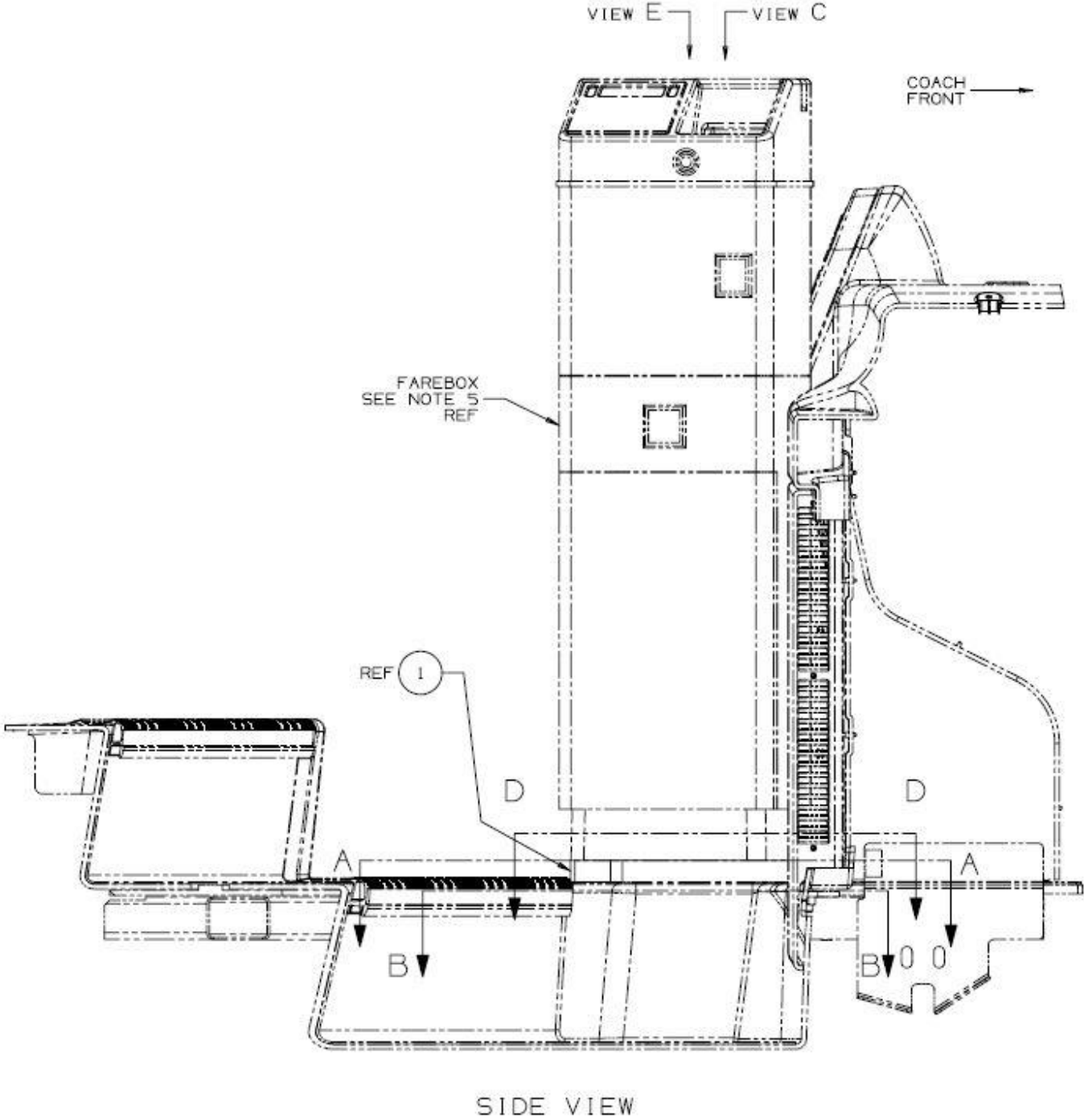
4. Shown current installation with interference at dash panel. Refer to Figure 2.

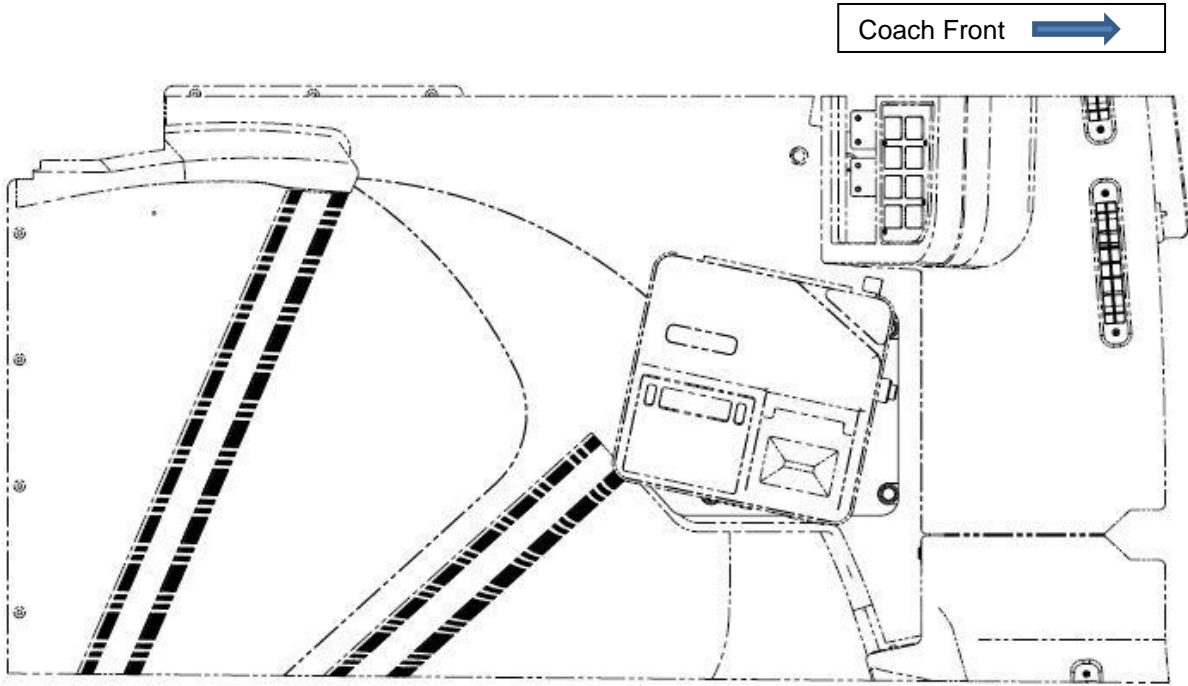
Top view, parallel to dash



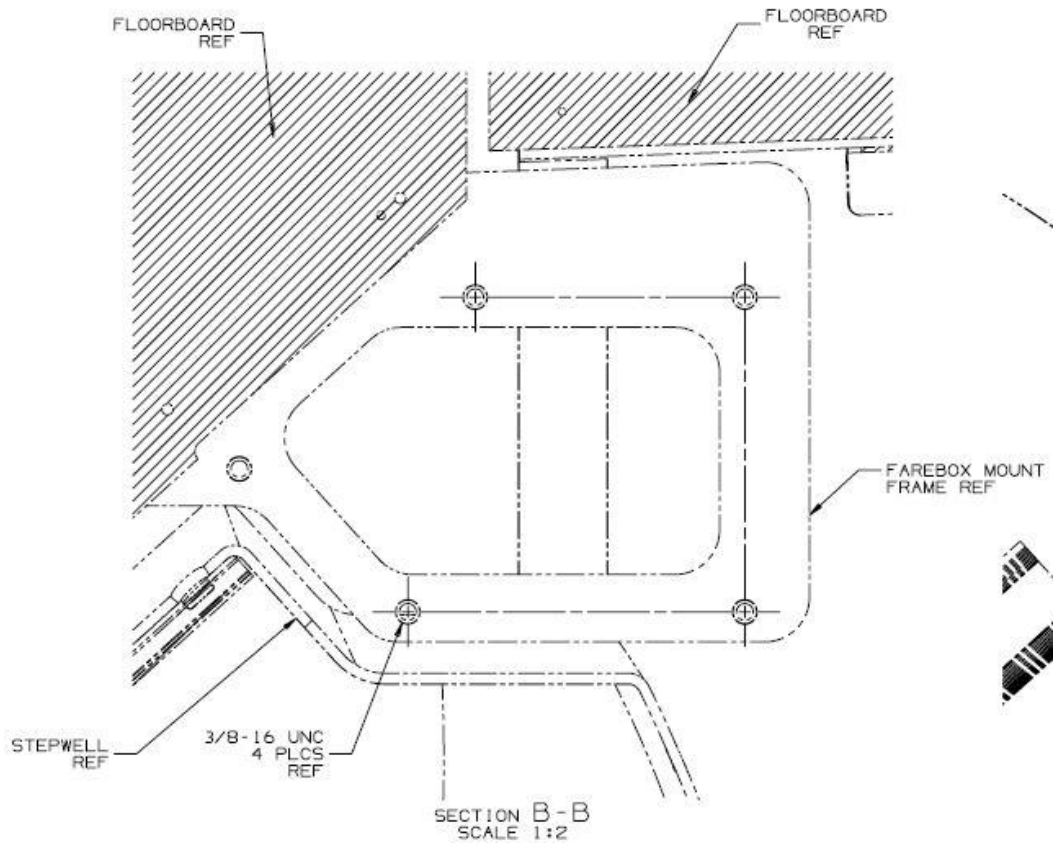
**FIGURE 2: SHOWN INTERFERENCE ISSUE WITH THE DASH PANEL**

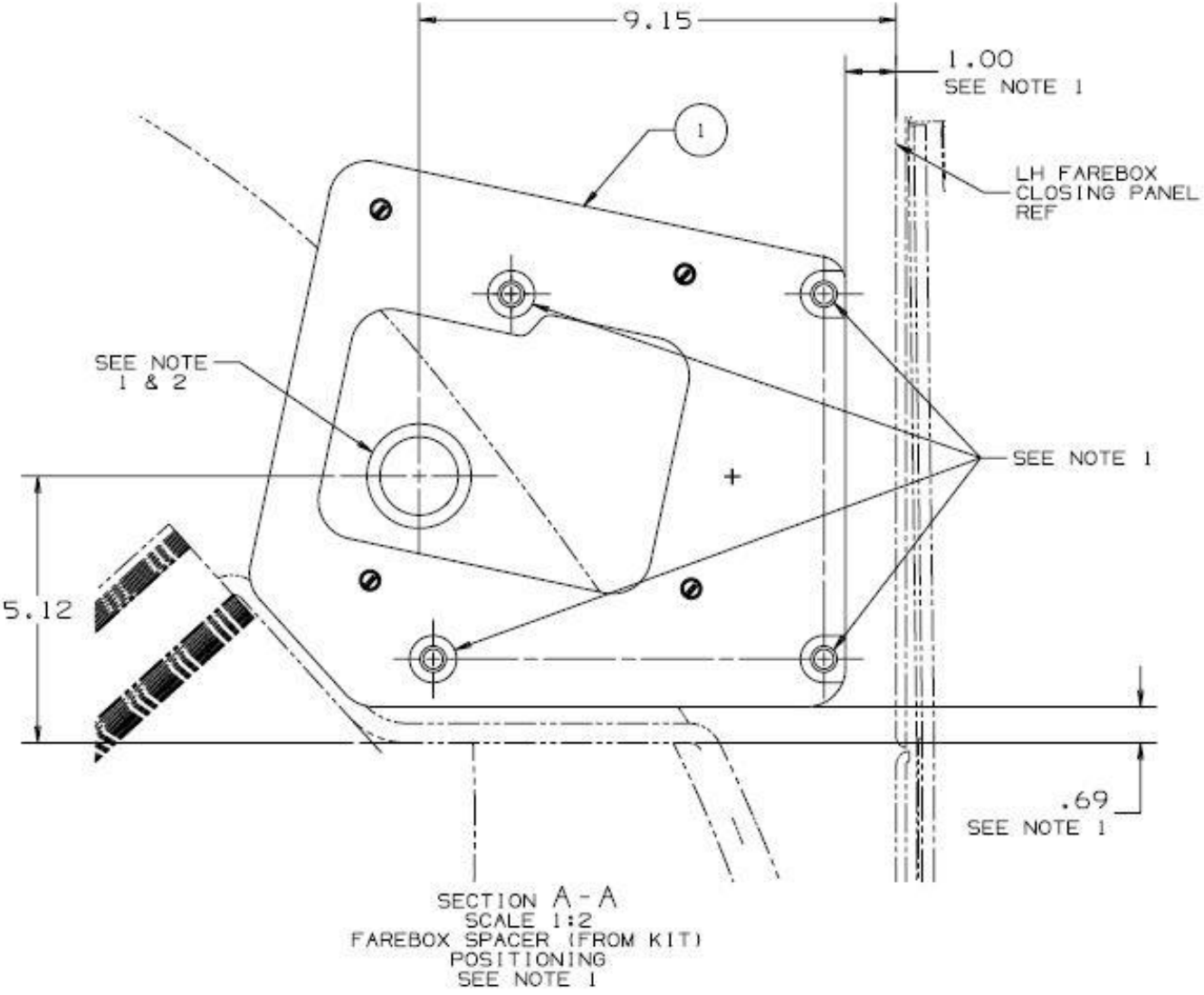
5. Remove current farebox and set aside to re-install later.
6. With the farebox unit removed, position farebox spacer (**PN: 1045632**) from kit or use spacer base template (based on part from kit) using dimensions provided in Section A-A. Mark 4-hole locations using the farebox spacer or spacer base template as a guide. Mark hole location for grommet per indicated dimensions. Remove farebox spacer or template. Drill 0.250" diameter pilot hole to a depth of 0.327" using a drill stop. Check alignment with the 3/8-16 threaded holes in frame. Drill 0.500" diameter hole to a depth of 0.327" using a drill stop. For steps 6 - 10, Refer to Figure 3 & 4.
7. Drill 1.75" diameter hole through the floor and stepwell using marked location for grommet. Install grommet. Route harness through floor and up to the farebox unit. If required, seal harness in floor with sealant (**PN: 055701**) to prevent any water from entering.

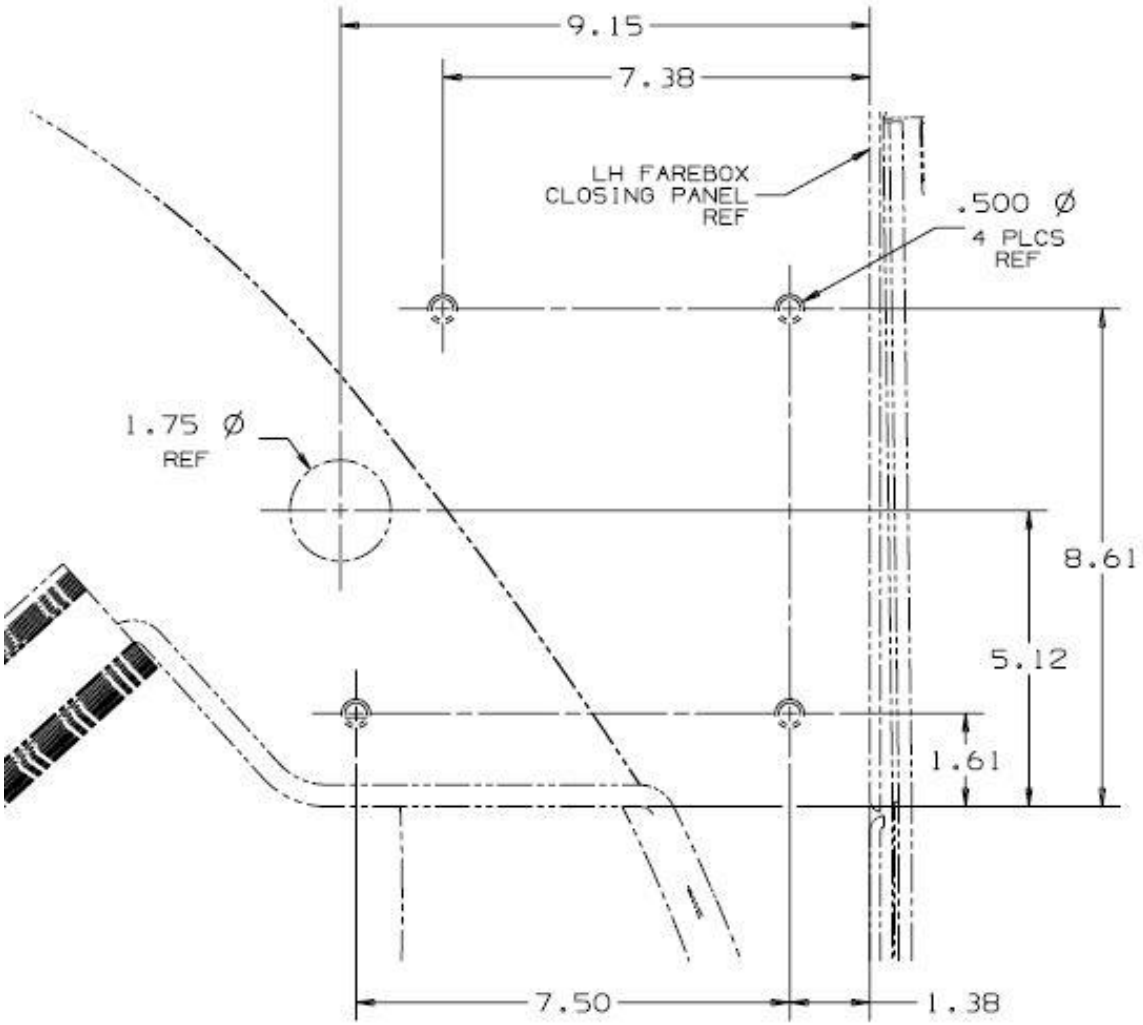




TOP VIEW

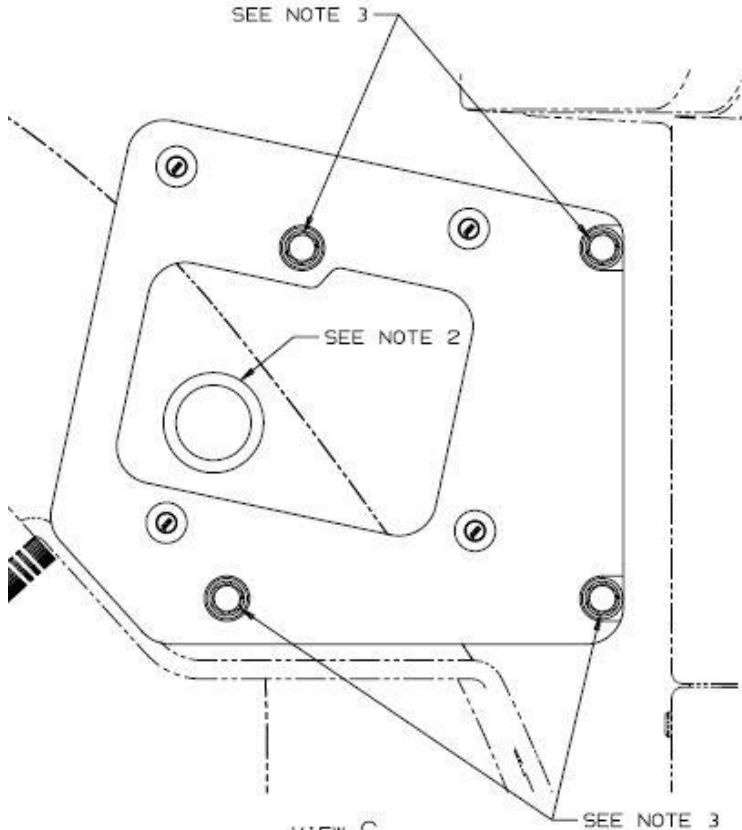




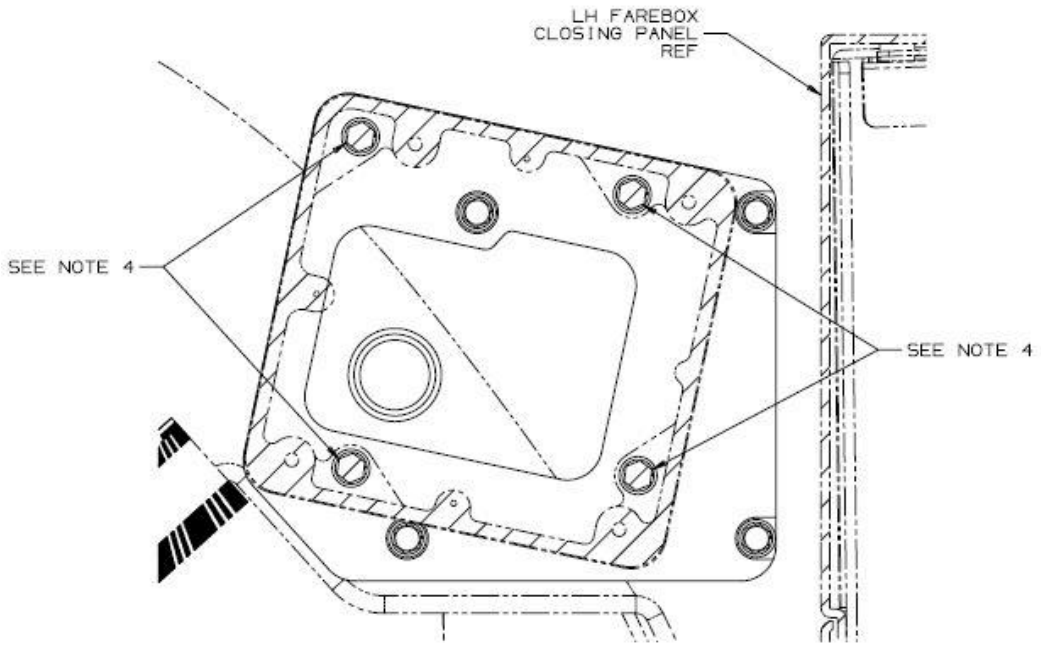


SECTION A-A  
SCALE 1:2  
FAREBOX SPACER REMOVED  
FINAL HOLE LOCATIONS SHOWN FOR MOUNTING  
SEE NOTES 1 & 2

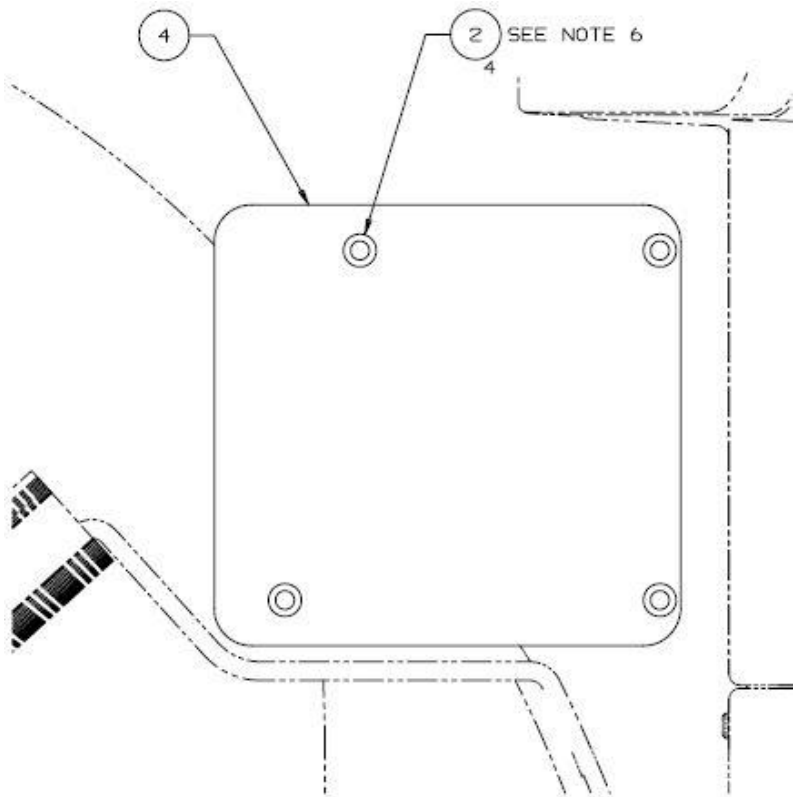




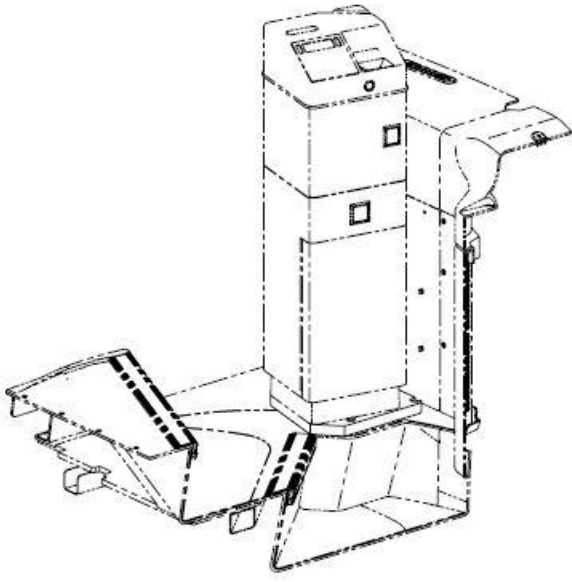
VIEW C  
SCALE 1:2  
FAREBOX HIDDEN FOR CLARITY  
CUSTOMER INSTALL REFERENCE ONLY



SECTION D-D  
SCALE 1:2



VIEW E  
SCALE 1:2  
FAREBOX HIDDEN FOR CLARITY  
PRODUCTION INSTALL REFERENCE ONLY



ISOMETRIC VIEW  
(FOR REFERENCE ONLY)

FIGURE 3: SHOWN DIMENSIONS TO INSTALL FAREBOX KIT

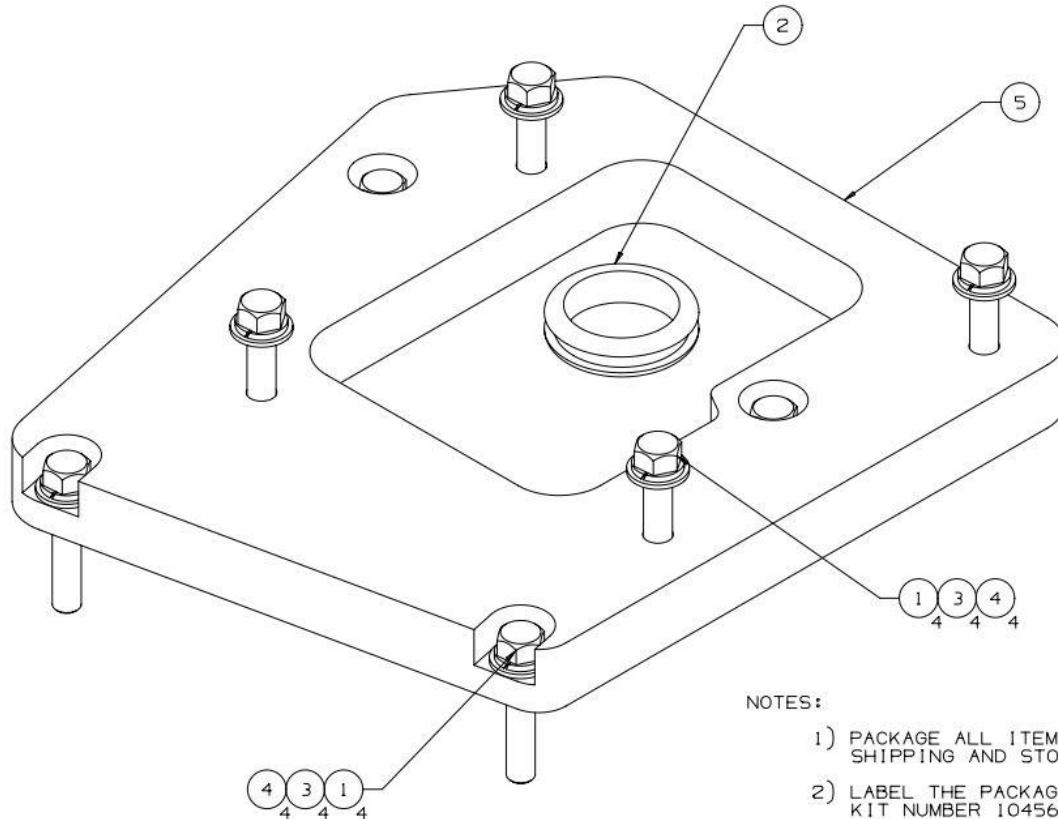
8. If not already done, the factory closeout plate should be removed and discarded.
9. Install farebox Kit (PN: 1045632) to the existing floor using the following hardware that comes with the kit. Apply Loctite (PN: 23-02-0027) to the threads of the mounting bolts. Refer to Figure 4 & View C.

(PN: 19-1-732) Screw – Cap, Hex HD, 3/8-16 x 2, GR 5, ZP x4

(PN: 19-2-27) Lock Washer – 3/8

(PN: 19-2-63) Flat Washer 3/8 SST

Tighten hardware at the 4 places and torque hardware to **30 – 36 FT/LBS.**



**NOTES:**

- 1) PACKAGE ALL ITEMS TO PREVENT DAMAGE IN SHIPPING AND STORAGE.
- 2) LABEL THE PACKAGE CLEARLY WITH THE MCI KIT NUMBER 1045632.

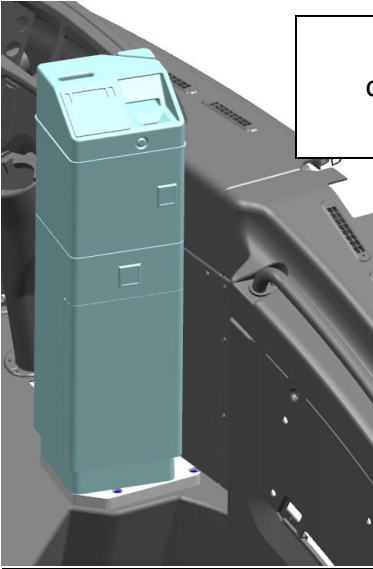
1.000	EA	5	1045633	ASSY-FAREBOX, 36" GFI ODYSSEY
8.000	EA	4	19-2-63	FLAT WASHER 3/8 SST
8.000	EA	3	19-2-27	LOCKWASHER-3/8
1.000	EA	2	19-12-17	GROMMET-1 1/2"BORE DIA.,1 3/4"GROOVE
8.000	EA	1	19-1-732	SCREW-CAP,HEX HD,3/8-16 X 2,GR 5, ZP
QTY	U/M	ITEM	PART NO.	DESCRIPTION

**FIGURE 4: SHOWN INSTALLATION OF THE FAREBOX KIT TO THE EXISTING PLATFORM.**

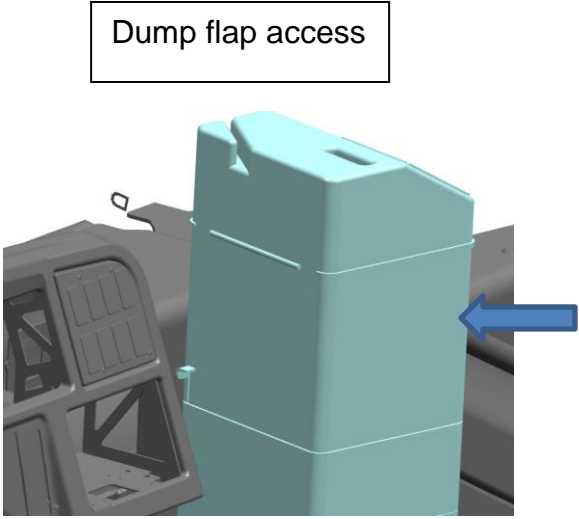
10. Install farebox unit onto the floor spacer kit (PN: 1045632) with the hardware from farebox kit (4 places) as shown in section D-D. Apply Loctite (PN: 23-02-0027) to the threads of the mounting bolts.

Tighten hardware at the 4 places and torque hardware to **30 – 36 FT/LBS.**

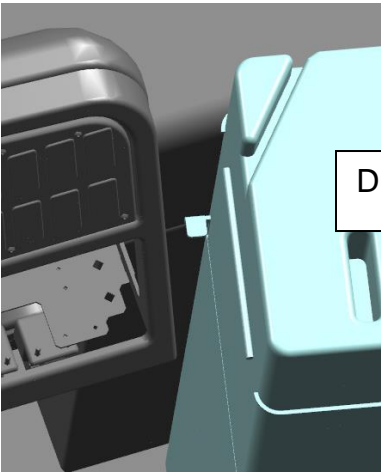
**Solution – 12-degree Reorientation – Shown views.**



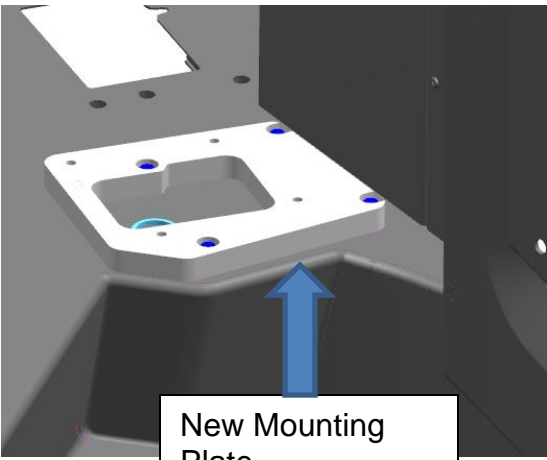
New farebox orientation at 12 degrees



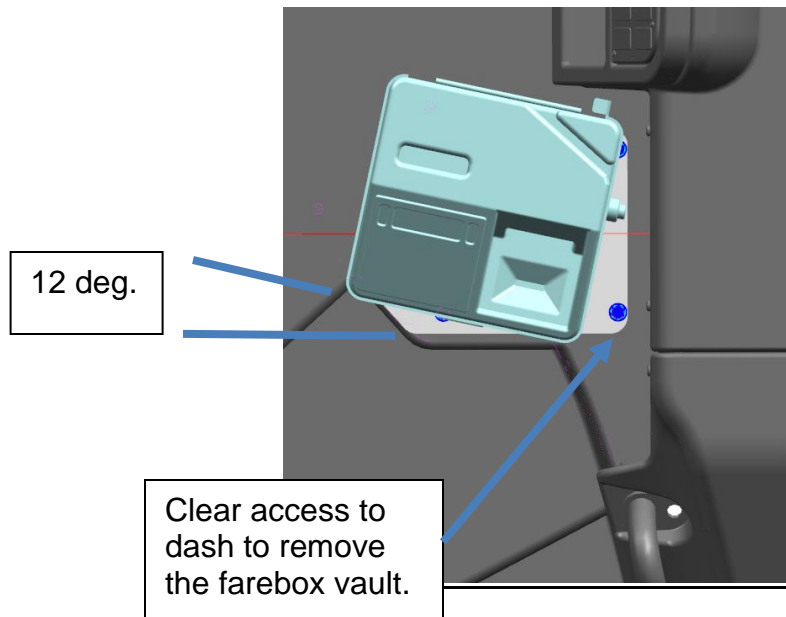
Dump flap access



Dump flap access



New Mounting Plate



**FIGURE 4A: SHOWN UPDATE VIEWS WITH MODIFICATIONS.**

11. Remove all tools and debris and return the bus to service condition.
12. Turn the main battery disconnect switch to the "ON" position.



<b>LABOUR ESTIMATE</b>				
	Operation	People	Hours	Labor Time
1	Install new farebox mount kit that allows for clearance at dash panel.	1	3	3.0

<b>PARTS REQUIRED</b>					
Item	Part Number	Description	Qty. per Coach	Units	Notes
1	1045632	Kit – Farebox, 36” GFI Odyssey	1	EA	
2	23-02-0027	Thread Lock – Loctite 242	0.01	EA	
3	055701	Sealant 221 White	0.1	EA	