 HYUNDAI Technical Service Bulletin	GROUP CAMPAIGN	NUMBER 23-01-089H
	DATE NOVEMBER 2023	MODEL(S) SONATA (YFA)
SUBJECT: REAR COMBINATION LAMP INSPECTION & REPLACEMENT (WARRANTY EXTENSION TXXT)		

Description: Some 2011-14MY Sonata (YF) vehicles may exhibit inoperative brake lights that may be caused by melting/deformation of the rear combination housing lamps.

Hyundai is extending warranty coverage for the rear combination lamp under this condition to 15 years/200,000 miles from the date of original retail delivery or date of first use (whichever occurs first) and is valid for original and subsequent owners.

Follow the service procedure in this TSB to inspect the rear combination lamps and, if necessary, replace them if heat deformation is found.



Applicable Vehicles (Certain):

- 2011–2014MY Sonata (YFA) vehicles produced from 12/11/2009 - 5/21/2014

**SUBJECT: REAR COMBINATION LAMP INSPECTION & REPLACEMENT
(WARRANTY EXTENSION TXXT)**

Parts Information:

Model	Part Name	Part Number	Quantity
Sonata (YFA)	Lamp Assy-Rear Combination (Outside LH)	92401-3Q000	1
	Lamp Assy-Rear Combination (Outside RH)	92402-3Q000	1

Warranty Information:

Model	Op. Code	Operation	Op. Time	Casual Part	Nature Code	Cause Code
Sonata (YFA)	21DA01I0	Rear Combination Lamps Inspection	0.2 M/H	92401-3Q000	I11	ZZ3
	21DA01R0	Rear Combination Lamps Inspection / Replacement	0.3 M/H			

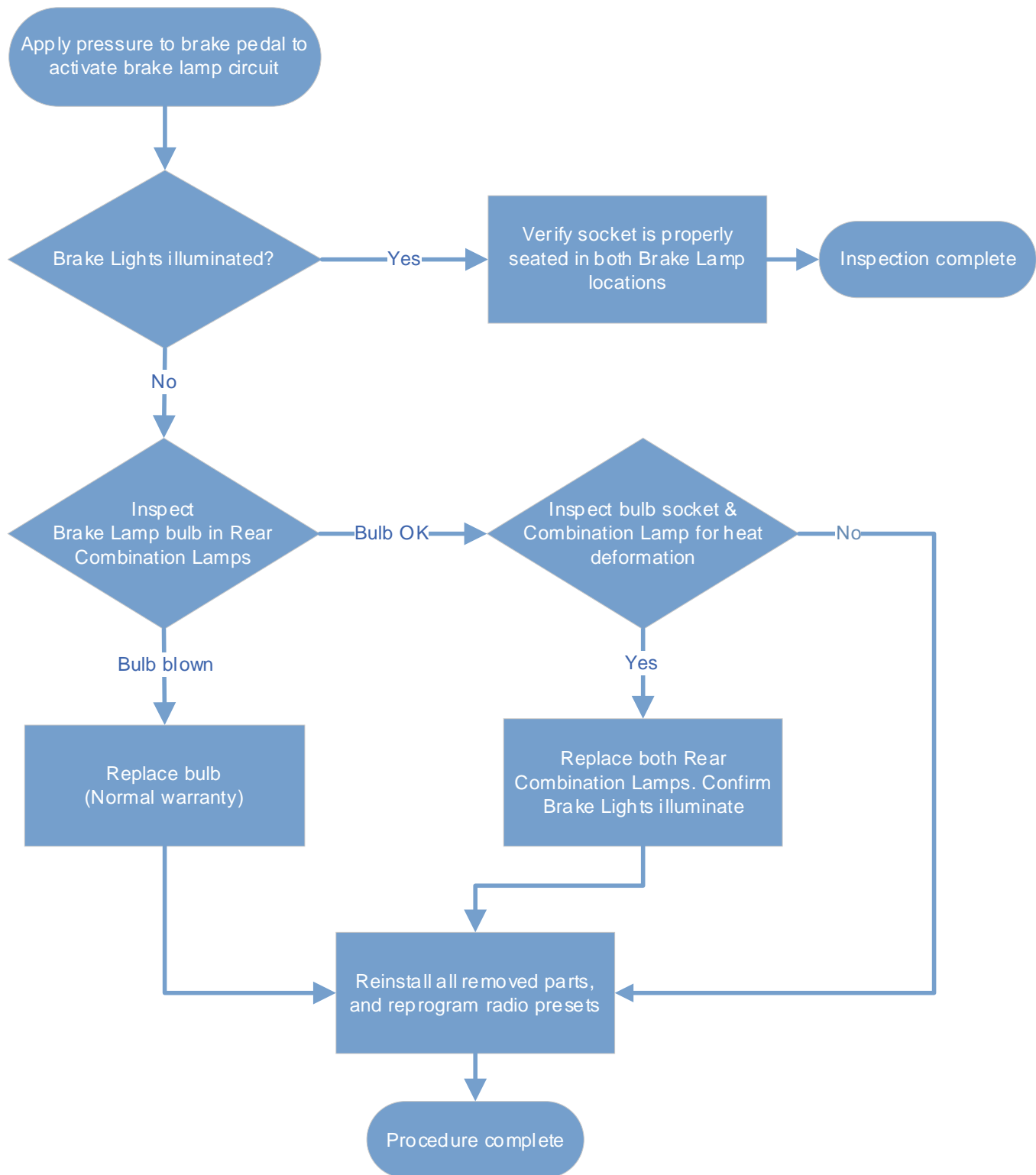
NOTE 1: If the affected parts are still under factory warranty, submit as normal warranty. If the affected parts are out of factory warranty and within the extended warranty period, submit as a campaign claim type using the op codes listed above.

NOTE 2: If a part that is not covered by this TSB is found in need of replacement while performing TXXT and the affected part is still under warranty, submit a separate claim using the same repair order. If the affected part is out of warranty, submit a Prior Approval request for goodwill consideration prior to performing the work.

NOTE 3: This TSB includes Repair validation photos. Op times include VIN, Mileage and Repair validation photos as outlined in the Digital Documentation Policy.

NOTE 4: The incident parts are subject to callback through the normal Warranty Technical Center (WTC) parts return process. **Claim is subject to debit if the part is not returned.**

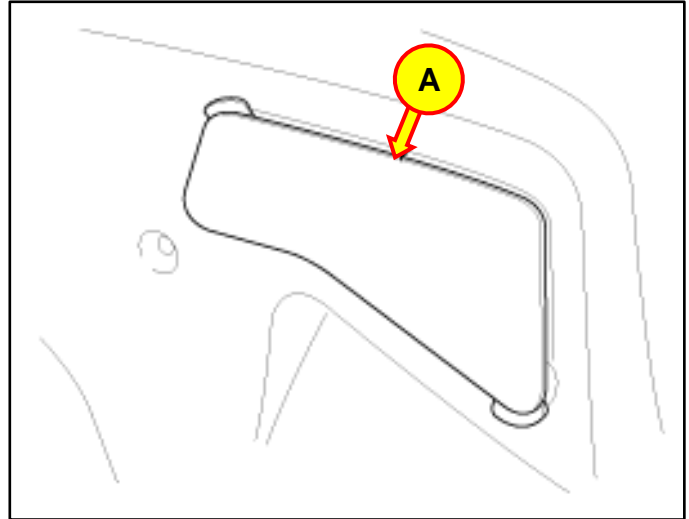
Inspection Procedure:



SUBJECT:**REAR COMBINATION LAMP INSPECTION & REPLACEMENT
(WARRANTY EXTENSION TXXT)****Service Procedure:****STUI**

This TSB includes Repair validation photos. Refer to the latest Digital Documentation Policy for requirements.

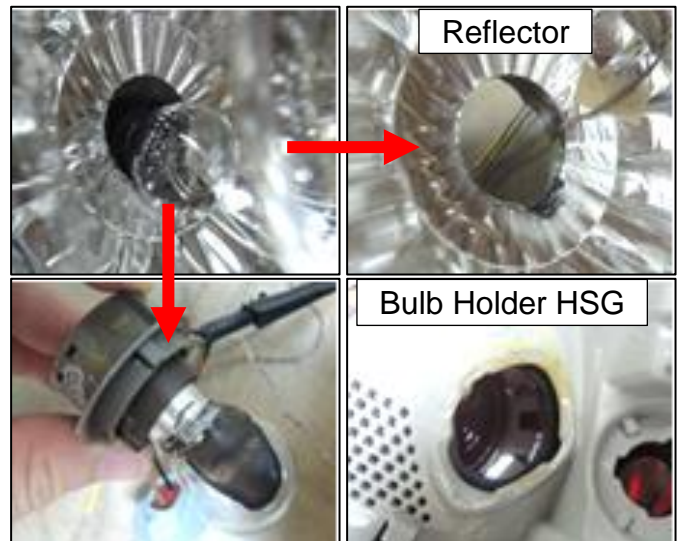
1. Record customer's audio presets, then disconnect the negative (-) battery cable.
2. From inside the trunk, remove the cover (A) of both the LH and RH rear combination lamps.



3. Remove the stop lamp socket from the LH and RH housing and inspect for any signs of heat deformation.

NOTICE

Heat deformation around the bulb housing opening may vary. The discoloration of the bulb socket alone does not necessarily indicate this condition.



4.

STUI

Using STUI, take pictures of the current state of the LH and RH rear combination lamps.

Upload the photos to STUI.

Examples of heat deformation shown in photos on the right.



5. **If there is no heat deformation on either combination lamp**, re-install the bulbs and lamp covers, then reconnect the negative (-) battery cable and reprogram customer's audio presets.

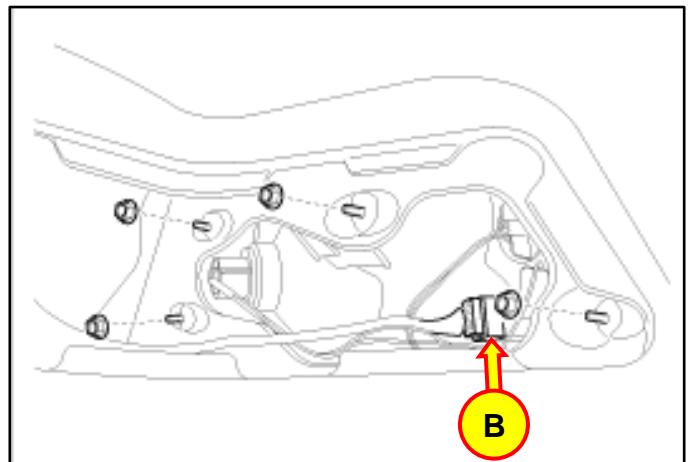
6. **If heat deformation is present on either lamp**, replace both the LH and RH combination lamps.

Proceed to step 7.

7. Remove the 4 mounting nuts and disconnect the floor harness from the combination lamp harness (B).

***i* Information**

This bulletin may not apply if the housings were deformed by bulbs that are not designed for this specific application.



8. Install the replacement combination lamps.

Secure the four mounting nuts.

Reconnect the floor harness to the combination lamp harness.

***i* Information**

Before fully tightening the mounting nuts, check the body fit (gap to trunk/rear combination inner and quarter panel). Adjust the fit if necessary.

9. Reconnect the negative (–) battery cable and reprogram customer's audio presets.
10. Confirm brake lights illuminate.