



S-Series™

2.0 Cab Roof Runoff Deflector

Date: December 11, 2023
Bulletin Name: FDM-SVC-033
Model: Oshkosh S-Series
Units Affected: 2.0 Vehicles

Purpose:

This bulletin provides instruction for installing a cab roof deflector that reduces the amount of debris that can wash down the windshield when a truck loads at the batch plant.

Notice:

- This bulletin should be read and understood in its entirety before performing this procedure.
- All procedures outlined in the bulletin must be performed by skilled service personnel. Refer to the product service manual for descriptions of maintenance procedures.

SAFETY NOTICE

Perform your company’s Lockout/Tagout procedure. If your company does not have a Lockout/Tagout procedure, follow OSHA 1910.147 and 1910.146 Confined Space as appropriate.

SAFETY NOTICE

Use appropriate Personal Protective Equipment (PPE) as required by your company.

Tools and Equipment Required:

Customer to supply:

- Hand tools
- Torque wrench (foot pounds)
- Drill
- 9/32" drill bit (0.281")
- Measuring tape

Parts Required:

Item	Part Number	Description	Qty.
1	A000A502	SCR, FLG, HEX 0.25-20 X 1.00 G8 MB	6
2	A000A507	SCR, FLG, HEX 0.25-20 X 2.25 G8 MB	2
3	A000A688	NUT, FLG, LKDT 0.25-20 G8 MB	8
4	A000H072	FLAP, RUBBER, CAB, FRONT	1
5	A000H146	RETAINER, FRONT FLAP	1
6	A001G401	BRKT, ROOF RUNOFF, SVC	1
7	A001G403	TRIM, SPL, ROOF RUNOFF, PVC	1

Procedure:

Lockout/Tagout

1. Place unit on a flat surface, engage parking brake, chock truck tires, and perform your company's Lockout/Tagout procedure. If your company does not have a Lockout/Tagout procedure, follow OSHA 1910.147 and 1910.146 Confined Space as appropriate.
2. The vehicle's BATTERY DISCONNECT switch is located on the left-hand side of the battery box. Use the battery disconnect switch when performing any maintenance so the vehicle cannot accidentally be started.
 - a. Turn the battery disconnect switch (Figure A, Item 1) counterclockwise so the hole on the switch aligns with the hole in the bracket (Figure A, Item 2).
 - b. Install the safety lockout device ring (Figure B, Item 1) through the holes on the battery disconnect switch and the bracket.
 - c. Install a padlock (Figure B, Item 2) onto the safety lockout device ring, lock it, and put the key in your pocket. If more than one person is working on the vehicle, each person must install his or her own padlock.

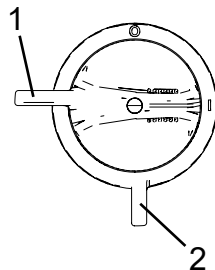


Figure A

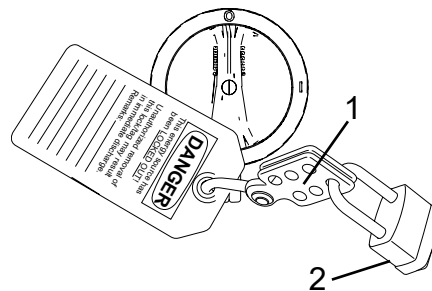


Figure B

Deflector Installation

3. Clean and dry top front portion of cab roof with alcohol wipes. See Figure 1.
4. Remove protective backing from roof runoff PVC trim (A001G403).
5. Install roof runoff PVC trim (A001G403) on cab roof. See Figure 1 for location and trim orientation.

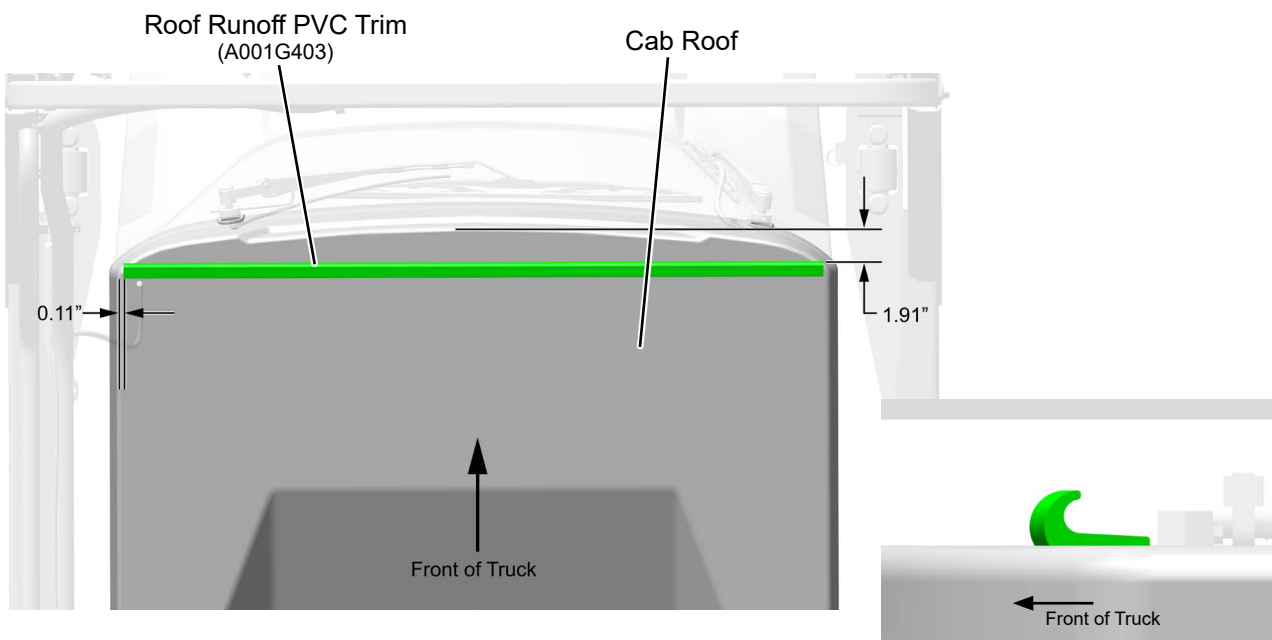


Figure 1. Top View Cab Roof

6. Mark and drill two 9/32" mounting holes in superstructure center support. See Figure 2 for hole locations. The roof runoff bracket (A001G401) can also be used as a template to mark hole locations.

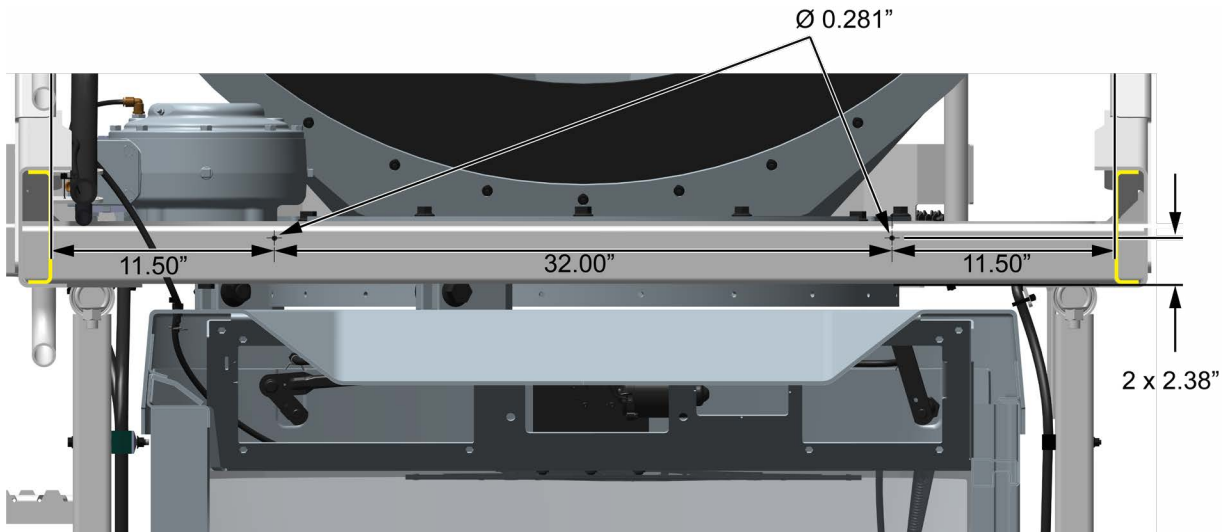


Figure 2. Deflector Mounting Holes

7. Assemble cab roof deflector using 0.25-20 x 1.0" screws (A000A502), roof runoff bracket (A001G401), rubber flap (A000H072), rubber flap retainer (A000H072), and lock nuts (A000A688). Final tighten hardware to 11 ft. lbs. See Figure 3.

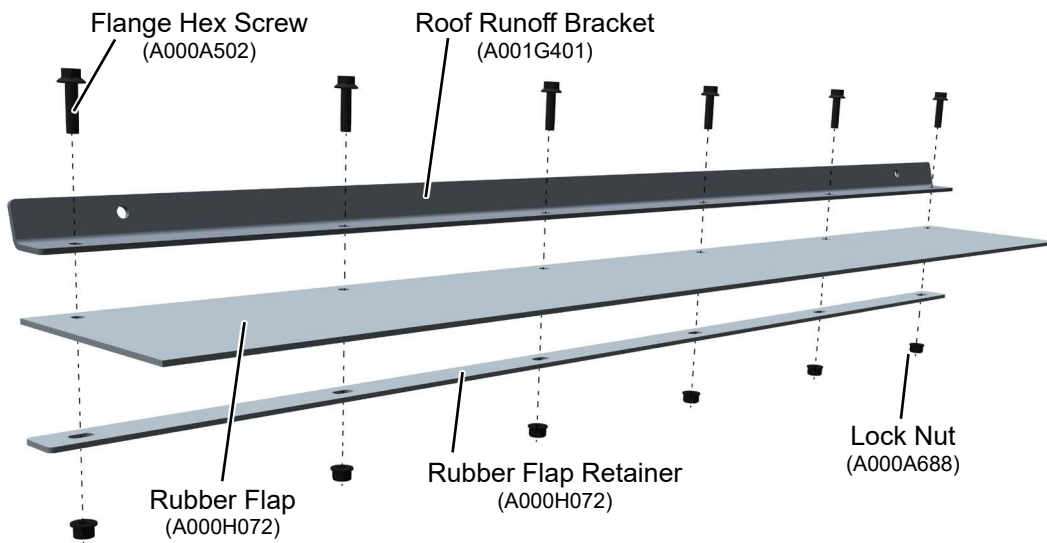


Figure 3. Deflector Assembly

8. Secure deflector assembly to superstructure center support using 0.25-20 x 2.25" screws (A000A507) and lock nuts (A000A688). Final tighten hardware to 11 ft. lbs. See Figure 4.

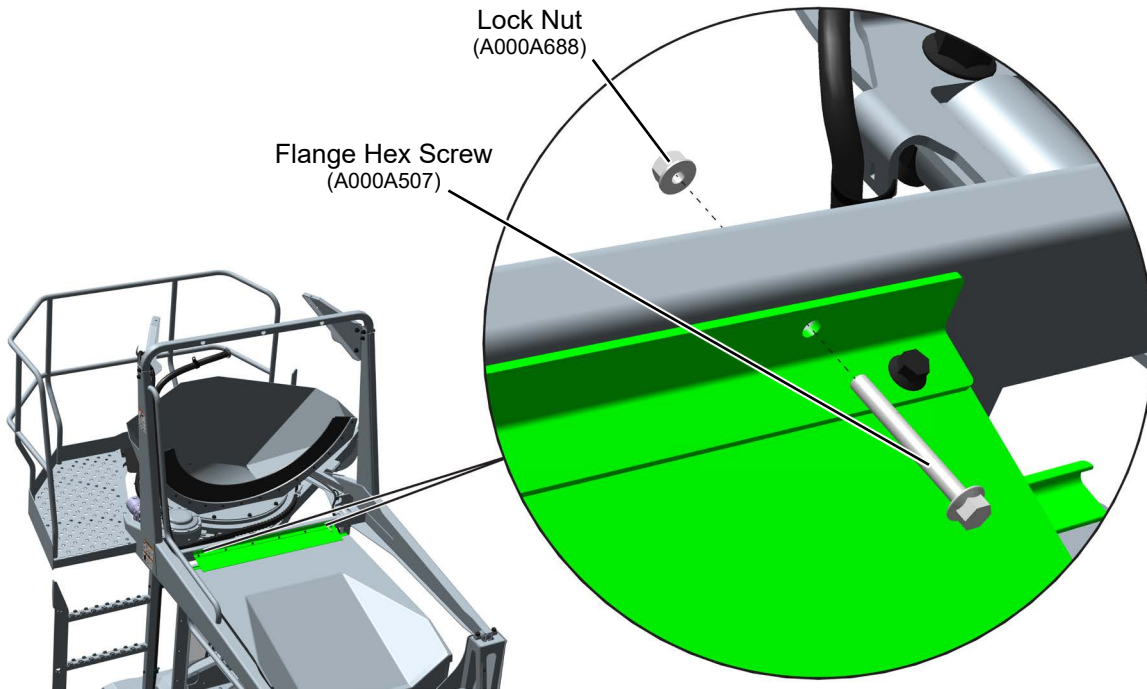


Figure 4. Deflector Installation

9. Remove lockout/tagout and tire chocks.

Continuous Improvement:

The change included in this document is part of the McNeilus Continuous Improvement Process.

McNeilus's quality policy is providing customer satisfaction through innovative products, dedicated service, and a constant focus on continuous improvement.



(888) 686-7278

www.streetsmartparts.com