



Service Bulletin

TECHNICAL

Subject: Radio Software Version Y171 – Multiple Updates

This Service Bulletin replaces PIT5999, PIT6008, and PIT6032. Please discard all copies of PIT5999 and PIT6032 and PIT6008.

Brand:	Model:	Model Year:		VIN:		Engine:	Transmission:
		from	to	from	to		
Chevrolet	Silverado 1500 New (RPO J22, VIN Digit 5 = A / D)	2022	2022				
	Silverado 1500	2023	2024				
	Silverado 2500HD/3500HD	2024	2024				
	Suburban	2022	2023				
	Tahoe						
GMC	Sierra 1500 New (RPO J22, VIN Digit 5 = H / U)	2022	2022				
	Sierra 1500	2023	2024				
	Sierra 2500HD/3500HD	2024	2024				
	Yukon Yukon XL	2022	2023				

Involved Region or Country	North America, Europe, Uzbekistan, Russia, Middle East, Bolivia (West), Chile (West), Colombia (West), Ecuador (West), Peru (West), Japan, Cadillac Korea (South Korea), Thailand (ASEAN), Other Africa, Argentina, Brazil, Paraguay, Uruguay
Additional Options (RPOs)	Equipped with Radio RPO IOK.
Condition	Some customers may comment on software related issues. Continuous improvement software updates are being released with improvements made in several areas.
Cause	The cause of the condition may be software anomalies.

<p>Correction</p>	<p>A new radio software update, version Y171, was released to service for vehicles equipped with Infotainment system RPO IOK. In addition to providing general robustness and stability enhancements, this update includes all enhancements from previous software version releases. Along with the vehicles mentioned above, vehicles in unconnected markets, and fleet customers may need the dealer to reprogram the radio with the new software package.</p> <p>Caution: to avoid potential programming errors, ensure both programming events (Programming and USB File Transfer) are performed.</p>
--------------------------	--

Y171 Most Notable Improvements

Important: Improvements will vary by model, build configuration, system, and sales region. Not all vehicles have all features.

Most notable improvements contained in this release may include:

- Customer may have intermittent drops in audio.
- When starting the vehicle, the blower motor speed may drop unexpectedly.
- A customer may not be able to save Favorites or keep a phone paired to the vehicle because it is in the Guest profile with no way to get to the Driver profile.
- CarPlay might play through the phone instead of the vehicle.
- There may be no radio audio after a phone call ends.
- The customer might have no radio audio.
- Text message playback might play through the phone instead of the vehicle.
- In the trailering app the brake gain does not save.
- The customer might have a black screen when using Hulu.
- The HUD might show audio metadata for too short of a time, or not at all, when changing stations.
- Google play security patches.

Service Procedure

Important: Service agents must comply with all International, Federal, State, Provincial, and/or Local laws applicable to the activities it performs under this bulletin, including but not limited to handling, deploying, preparing, classifying, packaging, marking, labeling, and shipping dangerous goods. In the event of a conflict between the procedures set forth in this bulletin and the laws that apply to your dealership, you must follow those applicable laws.

Caution: Before downloading the update files, be sure the computer is connected to the internet through a network cable (hardwired). DO NOT DOWNLOAD or install the files wirelessly. If there is an interruption during programming, programming failure or control module damage may occur.

- Ensure the programming tool is equipped with the latest software and is securely connected to the data link connector. If there is an interruption during programming, programming failure or control module damage may occur.
- Stable battery voltage is critical during programming. Any fluctuation, spiking, over voltage or loss of voltage will interrupt programming. Install a GM Authorized Programming Support Tool to maintain system voltage. Refer to www.gmdesolutions.com for further information. If not available, connect a fully charged 12 V jumper or booster pack disconnected from the AC voltage supply. DO NOT connect a battery charger.
- Follow the on-screen prompts regarding ignition power mode, but ensure that anything that drains excessive power (exterior lights, HVAC blower motor, etc) is off.
- Please verify that the radio time and date are set correctly before inserting USB drive into vehicle for programming, otherwise an error will result.
- Clear DTCs after programming is complete. Clearing powertrain DTCs will set the Inspection/Maintenance (I/M) system status indicators to NO.

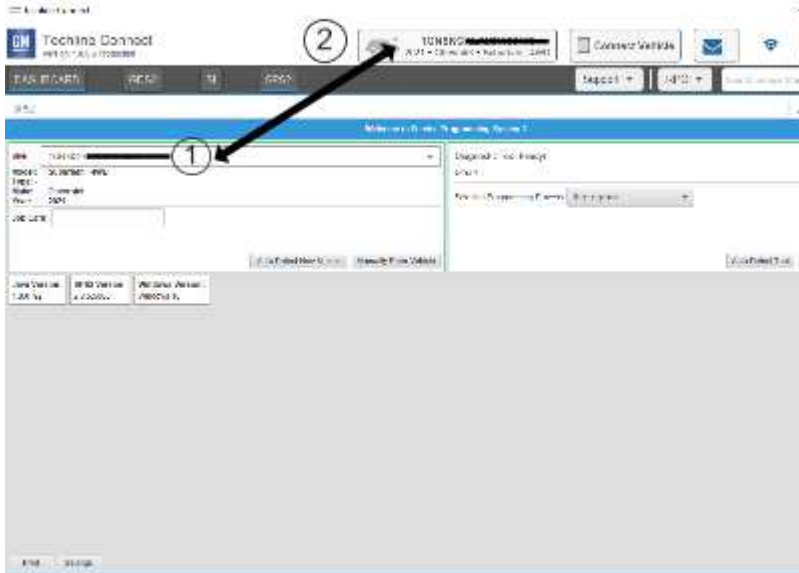
Important: The service technician always needs to verify that the VIN displayed in the TLC left side drop down menu and the top center window match the VIN plate of the vehicle to be programmed prior to using Service Programming System 2 (SPS2) for programming or reprogramming a module.

- For the TLC application, service technicians need to always ensure that the power mode (ignition) is "ON" before reading the VIN from the vehicle's VIN master module and that they do not select a VIN that is already in the TLC application memory from a previous vehicle.
- If the VIN that shows up in the TLC top center window after correctly reading the VIN from the vehicle does not match the VIN plate of the vehicle, manually type in the VIN characters from the vehicle VIN plate into the TLC top center window and use these for programming or reprogramming the subject module with the correct vehicle VIN and software and/or calibrations.
- The Engine Control Module (ECM) is the master module (for VIP vehicles) that TLC reads to determine the VIN of the vehicle. If the VIN read from the vehicle by TLC does not match the VIN plate of the vehicle, the ECM also needs to be reprogrammed with the correct VIN, software and calibrations that

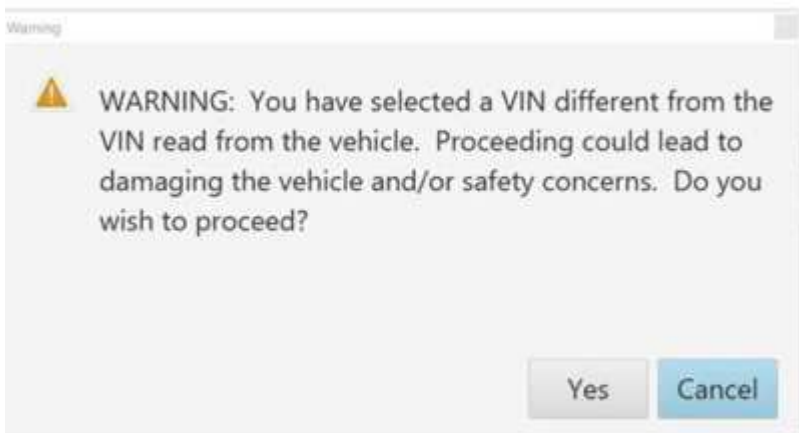
match the vehicle's VIN plate.

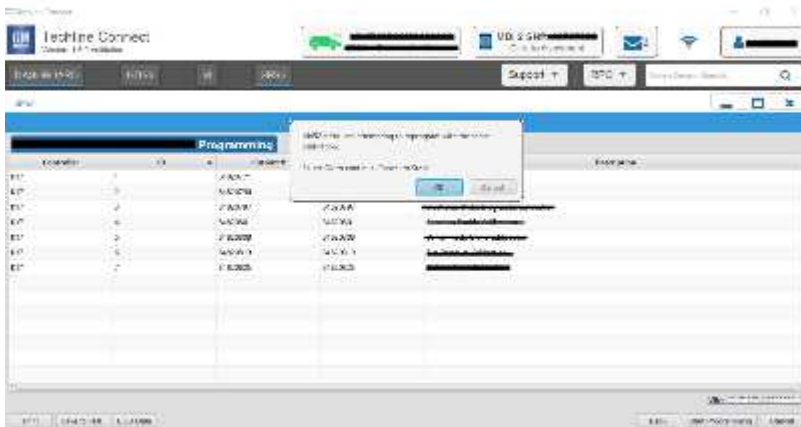
- The Body Control Module (BCM) is the master module (for GEM vehicles) that TLC reads to determine the VIN of the vehicle. If the VIN read from the vehicle by TLC does not match the VIN plate of the vehicle, the BCM also needs to be reprogrammed with the correct VIN, software and calibrations that match the vehicle's VIN plate.

Caution: Be sure the VIN selected in the drop down menu (1) is the same as the vehicle connected (2) before beginning programming.



Important: If the vehicle VIN DOES NOT match, the message below will be shown





Important: Techline Connect screens shown above.

Important: If the same calibration/software warning is noted on the TLC Summary screen, select OK and follow screen instructions. After a successful programming event, the WCC is located in the Service Programming System dialogue box of the SPS Summary screen. No further action is required. Refer to the Warranty section of the bulletin.

1. Reprogram the radio. Refer to [A11 Radio: Programming and Setup](#).



Note: The screenshot above is an example of module programming and may not be indicative of the specific module that is being programmed. Module selection and VIN information have been blacked out.

Important: To avoid warranty transaction rejections, you MUST record the warranty claim code provided on the Warranty Claim Code (WCC) screen

shown above on the job card. Refer to callout 1 above for the location of the WCC on the screen.

- Record SPS Warranty Claim Code on job card for warranty transaction submission.

Warranty Information

For vehicles repaired under the Bumper-to-Bumper coverage (Canada Base Warranty coverage), use the following labor operation. Reference the Applicable Warranties section of Investigate Vehicle History (IVH) for coverage information.

Labor Operation	Description	Labor Time
*2889888	Update Radio to Y171 via SPS/USB	0.6 hr

*This is a unique Labor Operation for Bulletin use only.

Important: **To avoid warranty transaction rejections, carefully read and follow the instructions below:

Labour Time [\[Top\]](#)

Labour Operation Code:

Additional labour op code information:

SPS Warranty Claim Code:

- The Warranty Claim Code must be accurately entered in the "Warranty Claim Code" field of the transaction.
- When more than one Warranty Claim Code is generated for a programming event, it is required to document all Warranty Claim Codes in the "Correction" field on the job card. Dealers must also enter one of the codes in the "Warranty Claim Code" field of the transaction, otherwise the transaction will reject. It is best practice to enter the FINAL code provided by SPS2.

Warranty Claim Code Information Retrieval



If the Warranty Claim Code was not recorded on the Job Card, the code can be retrieved in the SPS2 system as follows:

1. Open TLC on the computer used to program the vehicle.
2. Select and start SPS2.
3. Select Settings (1).
4. Select the Warranty Claim Code tab (2).

The VIN, Warranty Claim Code and Date/Time will be listed on a roster of recent programming events. If the code is retrievable, dealers should resubmit the transaction making sure to include the code in the SPS Warranty Claim Code field.

Version	3
Modified	Released November 03, 2023 Revised November 14, 2023 – Added 2023 SUV Model Year, 2024 1500, 2500HD, and 3500HD Truck Model Year. Revised December 20, 2023 - Removed Australia/New Zealand from Involved Regions or Country Section.

GM bulletins are intended for use by professional technicians, NOT a "do-it-yourselfer". They are written to inform these technicians of conditions that may occur on some vehicles, or to provide information that could assist in the proper service of a vehicle. Properly trained technicians have the equipment, tools, safety instructions, and know-how to do a job properly and safely. If a condition is described, DO NOT assume that the bulletin applies to your vehicle, or that your vehicle will have that condition. See your GM dealer for information on whether your vehicle may benefit from the information.



WE SUPPORT VOLUNTARY TECHNICIAN CERTIFICATION

Below the line - Internal only - Do not fax or email

Administrative Details:

Revision Log:

Bulletin 23-NA-183 - Released on 11/02/23
Bulletin 23-NA-183 (ver2) - Revised on 11/14/23 - Added 2023 SUV Model Year, 2024 1500, 2500HD, and 3500HD Truck Model Year.
Per IM from Amy Day at TAC - Updated the TAC supersede statement. No revision being published.
Bulletin 23-NA-183 (ver3) - Revised on 12/20/23 - Removed Australia/New Zealand from Involved Regions or Country Section.

Bulletin Source/Requestor - NAME/PHONE: Dave Lotsof , Brand Quality, 810-206-9213.

GM Liaison/Author: Charlie Parrott , Bulletin Group

Publishing Staff Assistant: Bulletin Group

Publishing Notes: none

GM CONFIDENTIAL -- NOT TO BE REPRODUCED FOR DISTRIBUTION OUTSIDE OF GENERAL MOTORS CORPORATION

EOM
