

REFERENCE:	TSB: 10-001-23 REV. A GROUP 10 - Restraints	Date:	November 9, 2023	REVISION:	10-001-23
VEHICLES AFFECTED:	2015 - 2022 (B1) Jeep Renegade 2015 - 2018 (BU) Jeep Renegade 2019 - 2022 (BV) Jeep Renegade 2019 - 2022 (FD) Fiat 500X 2015 - 2018 (FB) Fiat 500X	MARKET APPLICABILITY: <input type="checkbox"/> NA <input checked="" type="checkbox"/> MEA <input type="checkbox"/> SA <input checked="" type="checkbox"/> IAP <input checked="" type="checkbox"/> EE <input type="checkbox"/> CH			
CUSTOMER SYMPTOM:	Customers may experience a Malfunction Indicator Lamp (MIL) illumination. Upon further investigation the technician may find one or more of the following Diagnostic Trouble Codes (DTCs) has been set: <ul style="list-style-type: none"> • B0050-1D - Driver Front Buckle Switch - Out of Range (Active or Stored). • B0050-13 - Driver Front Buckle Switch - Circuit open (Active or Stored). 				
CAUSE:	Micro vibrations between buckle and seat wiring connectors causing male and female terminal corrosion Fig. 1.				

This bulletin supersedes Technical Service Bulletin (TSB) 10-001-23, date of issue August 25, 2023, which should be removed from your files. All revisions are highlighted with ****asterisks**** and include a new part number.

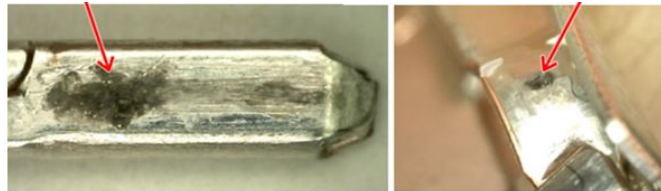


Fig. 1
Terminal Corrosion

REPAIR SUMMARY:

This bulletin involves replacing the inline seat connector.

CLAIMS DATA:

Labor Operation No:	Labor Description	Skill Category	Labor Time
23-20-87-03	Connector, In Line Seat, Replace (1 - Semi-Skilled)	6 - Electrical and Body Systems	0.9 Hrs.
Failure Code	ZZ	Service Action	

SPARE PARTS:

Qty	Part No.	Description	Notes
1 (AR)	**52226396 EE/MEA	Kit, Connector**	
4 (AR)	68372091AA Mopar 11105485 EE/MEA	Shrink Tube	

DIAGNOSIS:

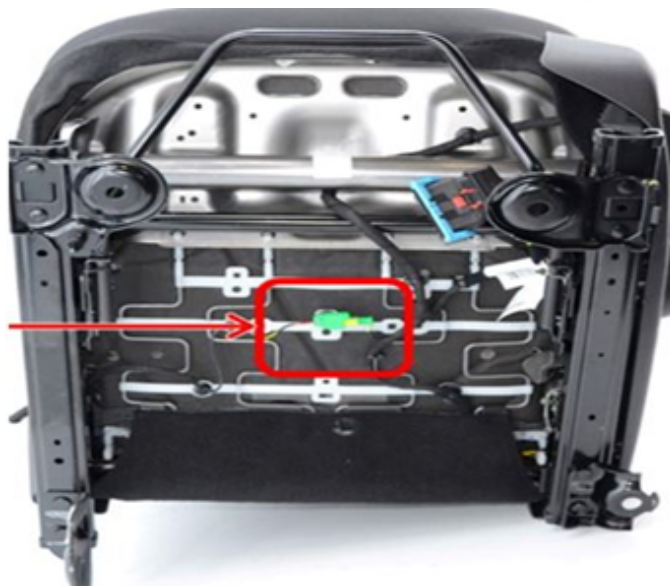
If the customer describes any of the symptoms listed above in the customer symptom section, perform the Repair Procedure.

SPECIAL TOOLS/EQUIPMENT:

Description	Ref. No.	Notes
wiTECH or Equivalent	–	–

REPAIR PROCEDURE:

1. Remove the front driver's seat and put it on a clean work area. Refer to the detailed service procedures available in DealerConnect>Service Library under: Service Info> 23 - Body / Seats, First Row / Seat, Front / Removal.
2. On the seat bottom, locate the seat belt buckle in line connector [Fig. 2](#).

**Fig. 2**

Seat Belt Buckle In Line Connector Location

3. Remove the old seat belt buckle connector.
4. Splice in the new in line connector. Refer to the detailed service procedures available in DealerConnect>Service Library under: Service Info> 10 - Restraints / Standard Procedure Supplemental Restraint System Wiring Repairs.

5. Install the front driver's seat. Refer to the detailed service procedures available in DealerConnect>Service Library under: Service Info> 23 - Body / Seats, First Row / Seat, Front / Installation.
6. Using wiTECH clear all DTCs that may have been set performing this repair procedure.

POLICY:

Reimbursable within the provisions of the warranty.

This bulletin is supplied as technical information only and is not an authorization for repair. No part of this publication may be reproduced, stored in a retrieval system, or transmitted, in any form or by any means, electronic, mechanical, photocopying, or otherwise, without written permission of FCA US LLC.