



EMISSIONS RECALL

VEHICLE EMISSION CONTROL INFORMATION LABEL

RECALL NO: M0450
DATE: 1-26-2024
REFERENCE: RCB-001-24

SUBJECT VEHICLES:

Certain 2024 model year L-Series Hino Conventional trucks equipped with a Cummins B6.7 engine that were assembled at the Mineral Wells, West Virginia, USA assembly plant.

Note: Refer to the appropriate Vehicle Identification Number in the warranty system to determine vehicle eligibility.

OVERVIEW:

Some Vehicle Emissions Control Information Labels may contain incorrect information due to incorrect data being input to the production control system, or due to mislabeling during repair.

The details of the issues are as follows:

1. “LRRRA” may have been placed instead of “LRRS”.
2. “LRRS” may have been placed instead of “LRRRA”.
3. “THIS VEHICLE COMPLIES WITH U.S. EPA” may have been placed instead of “THIS VEHICLE COMPLIES WITH U.S EPA AND CALIFORNIA”.

This procedure will guide you through inspecting the Vehicle Emission Control Label, comparing it to the Vehicle Matrix contained in this bulletin and if incorrect, replacing it as necessary.



BEFORE YOU BEGIN:

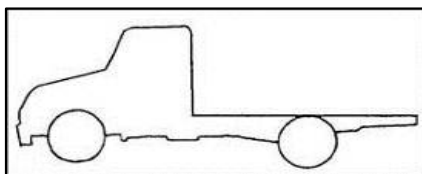
- Read and understand all instructions and procedures before you begin the work.
- Read and follow all **NOTICES** and **WARNINGS** set forth in this publication. These alerts help to avoid damage to components, serious personal injury, or both.
- Park the vehicle on a level and solid surface and apply the parking brake firmly. Confirm parking brake activation.
- Confirm the engine is stopped, the starter switch is in the off (LOCK) position, and the key is removed.
- Always wear safety glasses to prevent eye injuries.
- Place wheel chocks in front of and behind all wheels to prevent the vehicle from moving.

PARTS:

PART NUMBER	PART DESCRIPTION	QUANTITY
N/A	Vehicle Emission Control Information Label	As Needed (1)

VEHICLE PREPARATION:

1. Park the vehicle on a level and solid surface. Confirm the engine is stopped, the starter switch is in the off (LOCK) position, and the key is removed.

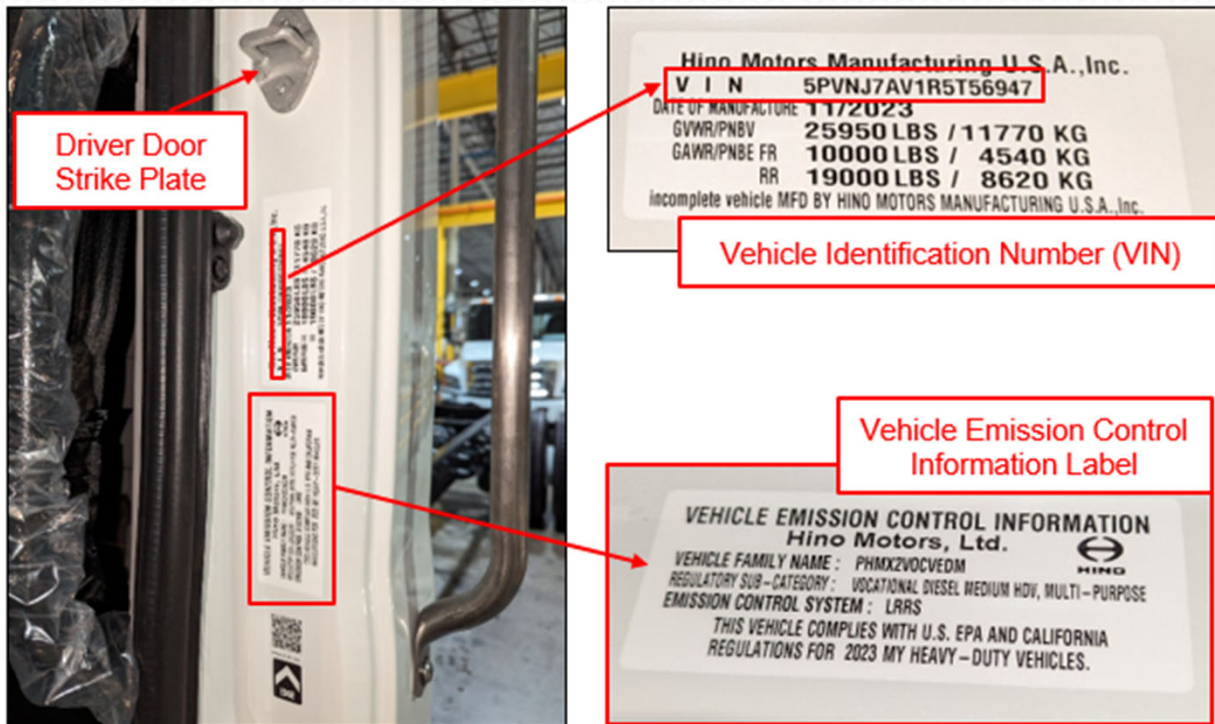


2. Apply the parking brake. Chock all of the wheels.



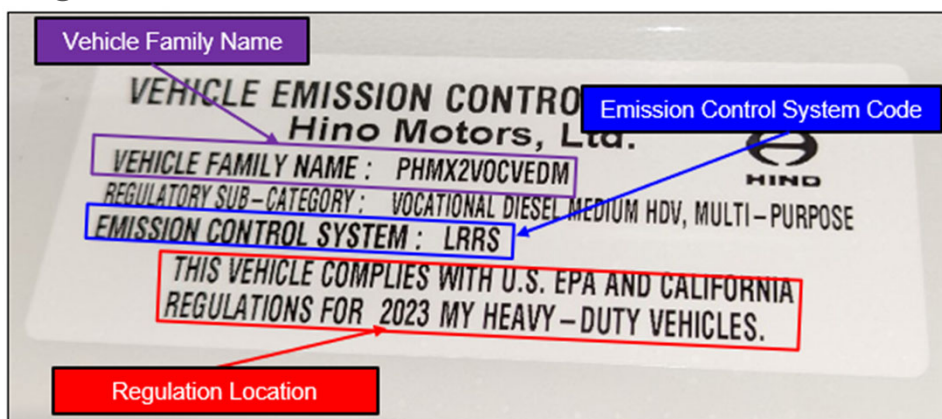
INSPECTION PROCEDURE:

1. Open the driver door and locate the following in the driver door jamb below the driver door strike plate:
 - Vehicle Identification Number (VIN)
 - Vehicle Emission Control Information Label



2. Locate the following information on the Vehicle Emission Control Information label:

- Vehicle Family Name
- Emission Control System Code
- Regulation Location



3. Reference the Vehicle Matrix at the end of this bulletin. Locate the VIN of the vehicle you're working on and take note of the following information.

- Vehicle Family Name
- Emission Control System Code
- Regulation Location.

VIN	Vehicle Family Name	Emission Control System Code	Regulation Location
5PVNJ7AV6R5T54613	PHMX2VOCVEDM	LRRR	U.S EPA AND CALIFORNIA

4. On the Vehicle Emission Control Information label located the vehicle, does the following information match the information listed on the Vehicle Matrix contained in this bulletin?

- Vehicle Family Name
- Emission Control System Code
- Regulation Location.

YES- The Vehicle Emission Control Information label does **NOT** require replacement. Proceed to STEP 7 of the REPAIR PROCEDURE.

NO- Contact Tech Assist for a replacement Vehicle Emission Control Information label (attach images of the VIN and GHG label to the case) and proceed to STEP 1 of the REPAIR PROCEDURE.



REPAIR PROCEDURE:

Vehicle Emission Control Label Replacement

1. Carefully heat the Vehicle Emission Control Information label with a heat gun for 20 to 30 seconds. Keep the heat gun moving and apply heat evenly to the entire label.

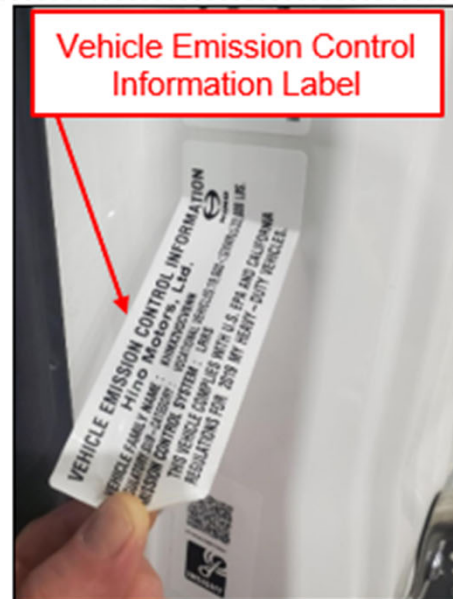
NOTICE: Care should be taken to not heat or damage the VIN label located directly above the Vehicle Emission Control Information label.

NOTICE: Care should be taken to not overheat the painted surfaces of the cab while heating the Vehicle Emission Control Information label, damage to the vehicle paint may occur if overheated.



2. Use a plastic razor blade or plastic scraper to start the removal of the Vehicle Emission Control Information label. Once started, the label can be carefully pulled to remove. Discard the old label.

NOTICE: Care should be taken to prevent damaging the cab paint while removing the old Vehicle Emission Control label.

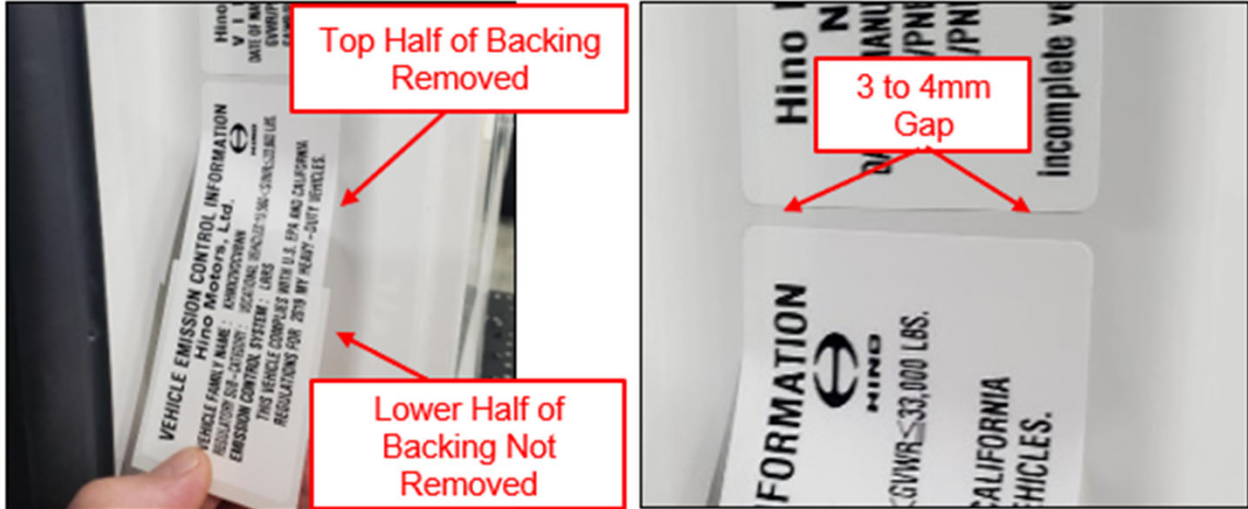


3. Clean the area with an alcohol wipe or acetone to remove any dirt, grease or remaining adhesive residue from the door jamb.

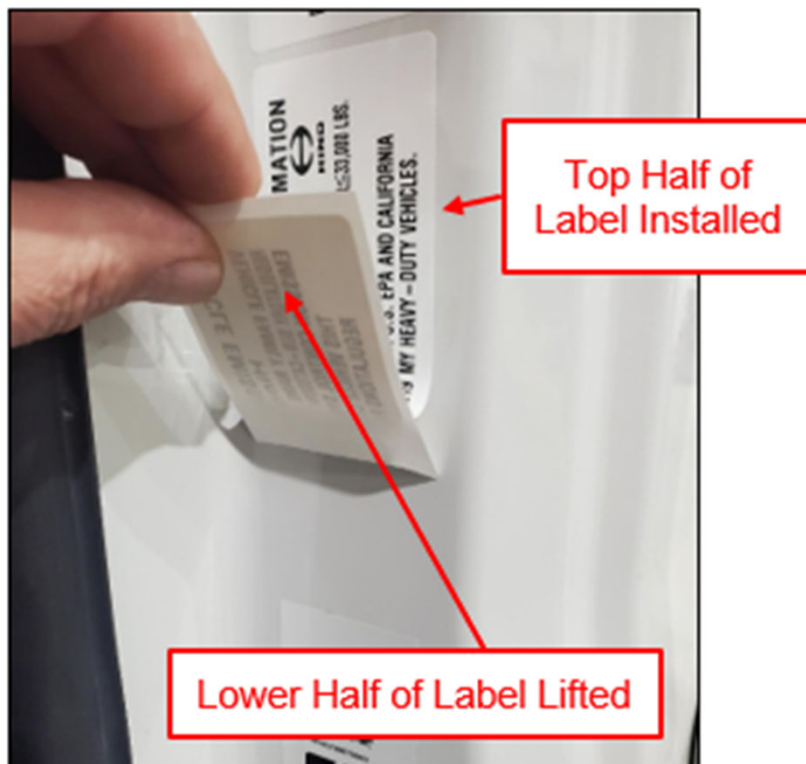
NOTICE: Ensure the area is free of any contamination before proceeding.



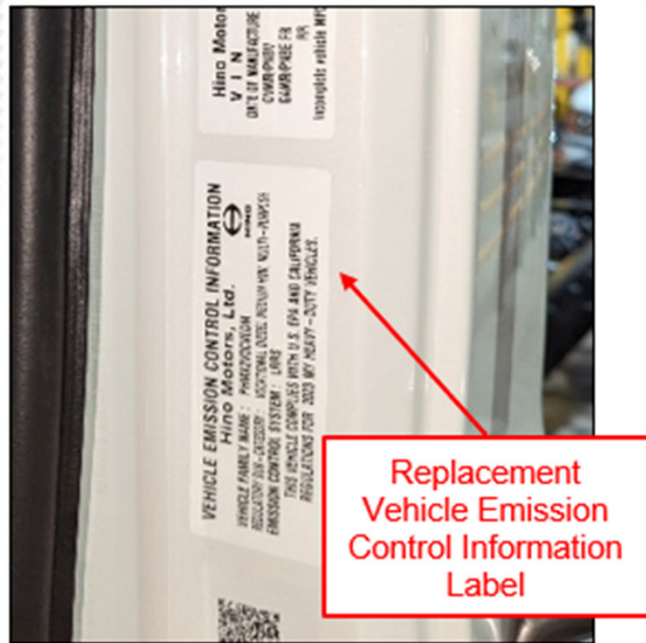
4. Remove the top half of the backing from the replacement Vehicle Emission Control Information label and carefully position the top edge of the replacement label as shown.



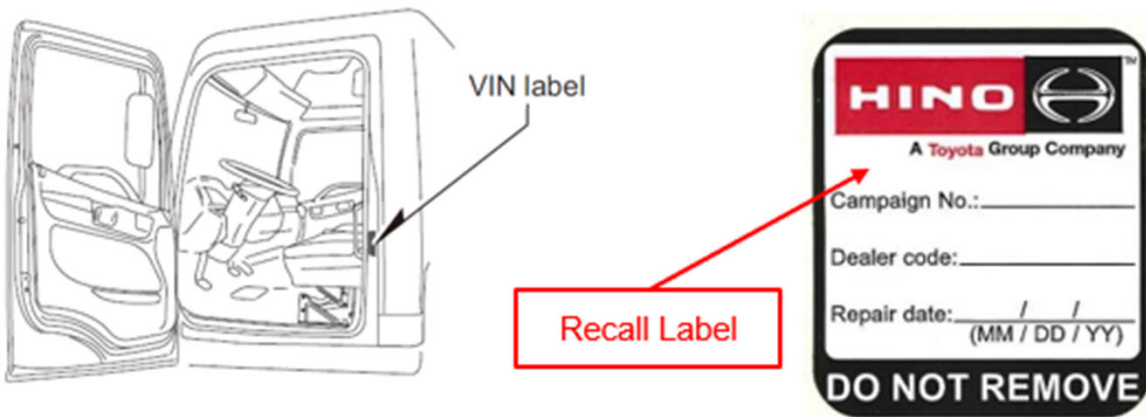
5. Install the top half of the replacement Vehicle Emission Control Information label to the driver door jamb then lift the lower half as shown to remove the lower half of the backing.



6. Install the lower half of the replacement Vehicle Emission Control Information label.



7. Install a recall label to the driver door jamb above the VIN label. Fill in the Campaign No, Dealer code, and Repair date. Proceed to **FINAL INSPECTION**.



FINAL INSPECTION:

1. To complete this procedure, review and confirm the following:
 - All information that appears on the Vehicle Emission Control Information label matches the information provided on the Vehicle Matrix contained in this bulletin.
 - The Vehicle Emission Control Information label is securely attached.
 - The sections of the recall label are filled in and the label is securely attached above the VIN label on the door jamb.

CLAIM APPLICATION

Reimbursable in accordance within the terms and policies of the Hino limited warranties.

- a) Claim Type: CR
- b) Recall No: M0450
- c) Labor charge:

Repair	Labor
Vehicle Emission Control Information Label Inspection Only:	0.3 Hr.
Vehicle Emission Control Information Label Inspection and Replacement:	1.0 Hr.



M0450 Vehicle Matrix

* Use Control F To Search

VIN	Vehicle Family Name	Emission Control System Code	Regulation Location
5PVNJ7AV6R5T54613	PHMX2VOCVEDM	LRRRA	U.S EPA AND CALIFORNIA
5PVNV7AT6R5T50189	PHMX2VOCVEDM	LRRRA	U.S EPA AND CALIFORNIA
5PVNJ7BY4R5T50164	PHMX2VOCVEDM	LRRRA	U.S. EPA
5PVNJ7BY6R5T50165	PHMX2VOCVEDM	LRRRA	U.S. EPA
5PVNJ7AV7R5T54653	PHMX2VOCVEDM	LRRRA	U.S. EPA
5PVNJ7AVXR5T54792	PHMX2VOCVEDM	LRRRA	U.S EPA AND CALIFORNIA
5PVNJ7AY3R5T50027	PHMX2VOCVEDM	LRRRA	U.S EPA AND CALIFORNIA
5PVNJ7AT6R5T50401	PHMX2VOCVEDM	LRRRA	U.S EPA AND CALIFORNIA
5PVNJ7AVXR5T54954	PHMX2VOCVEDM	LRRS	U.S EPA AND CALIFORNIA
5PVNJ7AV7R5T54958	PHMX2VOCVEDM	LRRS	U.S. EPA
5PVNV7AT9R5T50199	PHMX2VOCVEDM	LRRS	U.S. EPA
5PVNJ7AT2R5T50413	PHMX2VOCVEDM	LRRS	U.S. EPA
5PVNJ7AV7R5T54510	PHMX2VOCVEDM	LRRS	U.S EPA AND CALIFORNIA
5PVNJ7AVXR5T54498	PHMX2VOCVEDM	LRRS	U.S. EPA
5PVNJ7AV0R5T54512	PHMX2VOCVEDM	LRRS	U.S EPA AND CALIFORNIA
5PVNJ7AV1R5T54499	PHMX2VOCVEDM	LRRS	U.S. EPA
5PVNV7AVXR5T50469	PHMX2VOCVEDM	LRRS	U.S EPA AND CALIFORNIA
5PVNJ7AV8R5T54581	PHMX2VOCVEDM	LRRS	U.S EPA AND CALIFORNIA
5PVNJ7AV4R5T54500	PHMX2VOCVEDM	LRRS	U.S. EPA
5PVNV7AV6R5T50470	PHMX2VOCVEDM	LRRS	U.S EPA AND CALIFORNIA
5PVNJ7AV8R5T54502	PHMX2VOCVEDM	LRRS	U.S. EPA
5PVNJ7AV3R5T54519	PHMX2VOCVEDM	LRRS	U.S EPA AND CALIFORNIA
5PVNJ7AVXR5T54503	PHMX2VOCVEDM	LRRS	U.S. EPA
5PVNJ7AP3R5T50262	PHMX2VOCVEDM	LRRRA	U.S. EPA
5PVNE7APXR5T50036	PHMX2VOCVEDM	LRRS	U.S EPA AND CALIFORNIA
5PVNJ7AV1R5T54504	PHMX2VOCVEDM	LRRS	U.S. EPA
5PVNV7AV8R5T50471	PHMX2VOCVEDM	LRRS	U.S EPA AND CALIFORNIA
5PVNJ7AV3R5T54505	PHMX2VOCVEDM	LRRS	U.S. EPA
5PVNV7AVXR5T50472	PHMX2VOCVEDM	LRRS	U.S EPA AND CALIFORNIA
5PVNJ7AV7R5T54507	PHMX2VOCVEDM	LRRS	U.S EPA AND CALIFORNIA
5PVNV7AV1R5T50473	PHMX2VOCVEDM	LRRS	U.S EPA AND CALIFORNIA
5PVNJ7AV9R5T54508	PHMX2VOCVEDM	LRRS	U.S. EPA
5PVNJ7AV9R5T54525	PHMX2VOCVEDM	LRRS	U.S. EPA
5PVNJ7AV0R5T54509	PHMX2VOCVEDM	LRRS	U.S. EPA
5PVNJ7AV9R5T54511	PHMX2VOCVEDM	LRRRA	U.S. EPA
5PVNJ7AV9R5T54539	PHMX2VOCVEDM	LRRS	U.S EPA AND CALIFORNIA
5PVNV7APXR5T50165	PHMX2VOCVEDM	LRRS	U.S. EPA

VIN	Vehicle Family Name	Emission Control System Code	Regulation Location
5PVNV7AV3R5T50474	PHMX2VOCVEDM	LRRS	U.S EPA AND CALIFORNIA
5PVNJ7AV2R5T54513	PHMX2VOCVEDM	LRRS	U.S. EPA
5PVNJ7AV4R5T54514	PHMX2VOCVEDM	LRRS	U.S. EPA
5PVNV7AV5R5T50475	PHMX2VOCVEDM	LRRS	U.S EPA AND CALIFORNIA
5PVNJ7AV6R5T54515	PHMX2VOCVEDM	LRRS	U.S. EPA
5PVNV7AV7R5T50476	PHMX2VOCVEDM	LRRS	U.S EPA AND CALIFORNIA
5PVNJ7AV8R5T54516	PHMX2VOCVEDM	LRRS	U.S. EPA
5PVNV7AV9R5T50477	PHMX2VOCVEDM	LRRS	U.S EPA AND CALIFORNIA
5PVNJ7AVXR5T54517	PHMX2VOCVEDM	LRRS	U.S. EPA
5PVNJ7AV1R5T54518	PHMX2VOCVEDM	LRRS	U.S. EPA
5PVNJ7AVXR5T54548	PHMX2VOCVEDM	LRRS	U.S EPA AND CALIFORNIA
5PVNJ7AVXR5T54520	PHMX2VOCVEDM	LRRS	U.S. EPA
5PVNE7AP1R5T50037	PHMX2VOCVEDM	LRRS	U.S EPA AND CALIFORNIA
5PVNJ7AV1R5T54521	PHMX2VOCVEDM	LRRS	U.S EPA AND CALIFORNIA
5PVNJ7AV3R5T54522	PHMX2VOCVEDM	LRRS	U.S. EPA
5PVNJ7AV1R5T54549	PHMX2VOCVEDM	LRRS	U.S EPA AND CALIFORNIA
5PVNJ7AV5R5T54523	PHMX2VOCVEDM	LRRS	U.S. EPA
5PVNJ7AT5R5T50373	PHMX2VOCVEDM	LRRS	U.S. EPA
5PVNJ7AV7R5T54524	PHMX2VOCVEDM	LRRS	U.S. EPA
5PVNJ7AV0R5T54526	PHMX2VOCVEDM	LRRS	U.S. EPA
5PVNJ7AV1R5T54552	PHMX2VOCVEDM	LRRS	U.S EPA AND CALIFORNIA
5PVNJ7AV2R5T54527	PHMX2VOCVEDM	LRRS	U.S. EPA
5PVNJ7AV4R5T54528	PHMX2VOCVEDM	LRRS	U.S. EPA
5PVNJ7AV3R5T54553	PHMX2VOCVEDM	LRRS	U.S EPA AND CALIFORNIA
5PVNJ7AV6R5T54529	PHMX2VOCVEDM	LRRS	U.S. EPA
5PVNJ7AV2R5T54530	PHMX2VOCVEDM	LRRS	U.S. EPA
5PVNJ7AV5R5T54554	PHMX2VOCVEDM	LRRS	U.S EPA AND CALIFORNIA
5PVNV7AP1R5T50166	PHMX2VOCVEDM	LRRS	U.S. EPA
5PVNJ7AV7R5T54555	PHMX2VOCVEDM	LRRS	U.S EPA AND CALIFORNIA
5PVNJ7AV4R5T54531	PHMX2VOCVEDM	LRRS	U.S. EPA
5PVNJ7AV6R5T54532	PHMX2VOCVEDM	LRRS	U.S. EPA
5PVNJ7AV2R5T54558	PHMX2VOCVEDM	LRRS	U.S EPA AND CALIFORNIA
5PVNJ7AV8R5T54533	PHMX2VOCVEDM	LRRS	U.S. EPA
5PVNJ7AV4R5T54559	PHMX2VOCVEDM	LRRS	U.S EPA AND CALIFORNIA
5PVNJ7AVXR5T54534	PHMX2VOCVEDM	LRRS	U.S. EPA
5PVNJ7AV1R5T54535	PHMX2VOCVEDM	LRRS	U.S. EPA
5PVNJ7AV3R5T54536	PHMX2VOCVEDM	LRRS	U.S. EPA
5PVNJ7AV5R5T54537	PHMX2VOCVEDM	LRRS	U.S. EPA
5PVNJ7AV3R5T54567	PHMX2VOCVEDM	LRRS	U.S EPA AND CALIFORNIA
5PVNJ7AV7R5T54538	PHMX2VOCVEDM	LRRS	U.S. EPA
5PVNJ7AV5R5T54540	PHMX2VOCVEDM	LRRS	U.S. EPA

VIN	Vehicle Family Name	Emission Control System Code	Regulation Location
5PVNJ7AR0R5T50169	PHMX2VOCVEDM	LRRS	U.S EPA AND CALIFORNIA
5PVNJ7AV7R5T54541	PHMX2VOCVEDM	LRRS	U.S. EPA
5PVNV7AJXR5T50033	PHMX2VOCVEDM	LRRS	U.S. EPA
5PVNJ7AV9R5T54542	PHMX2VOCVEDM	LRRS	U.S. EPA
5PVNJ7AV0R5T54543	PHMX2VOCVEDM	LRRS	U.S. EPA
5PVNJ7AV3R5T54570	PHMX2VOCVEDM	LRRS	U.S EPA AND CALIFORNIA
5PVNJ7AV2R5T54544	PHMX2VOCVEDM	LRRS	U.S. EPA
5PVNJ7AV4R5T54545	PHMX2VOCVEDM	LRRS	U.S. EPA
5PVNJ7AV7R5T54572	PHMX2VOCVEDM	LRRS	U.S EPA AND CALIFORNIA
5PVNJ7AV6R5T54546	PHMX2VOCVEDM	LRRS	U.S. EPA
5PVNJ7AV8R5T54547	PHMX2VOCVEDM	LRRS	U.S. EPA
5PVNJ7AV2R5T54575	PHMX2VOCVEDM	LRRS	U.S EPA AND CALIFORNIA
5PVNJ7AV8R5T54550	PHMX2VOCVEDM	LRRS	U.S. EPA
5PVNJ7AV4R5T54576	PHMX2VOCVEDM	LRRS	U.S. EPA
5PVNJ7AVXR5T54551	PHMX2VOCVEDM	LRRS	U.S. EPA
5PVNJ7AV9R5T54556	PHMX2VOCVEDM	LRRS	U.S. EPA
5PVNV7AMXR5T50110	PHMX2VOCVEDM	LRRS	U.S. EPA
5PVNJ7AV0R5T54557	PHMX2VOCVEDM	LRRS	U.S. EPA
5PVNE7AT0R5T50155	PHMX2VOCVEDM	LRRS	U.S EPA AND CALIFORNIA
5PVNJ7AP7R5T50264	PHMX2VOCVEDM	LRRS	U.S. EPA
5PVNJ7AV0R5T54560	PHMX2VOCVEDM	LRRS	U.S. EPA
5PVNE7AVXR5T50181	PHMX2VOCVEDM	LRRS	U.S. EPA
5PVNJ7AV2R5T54561	PHMX2VOCVEDM	LRRS	U.S. EPA
5PVNJ7AT0R5T50376	PHMX2VOCVEDM	LRRS	U.S EPA AND CALIFORNIA
5PVNJ7AV4R5T54562	PHMX2VOCVEDM	LRRS	U.S. EPA
5PVNJ7AV6R5T54563	PHMX2VOCVEDM	LRRS	U.S. EPA
5PVNJ7AV8R5T54564	PHMX2VOCVEDM	LRRS	U.S. EPA
5PVNJ7AVXR5T54565	PHMX2VOCVEDM	LRRS	U.S. EPA
5PVNJ7AV6R5T54577	PHMX2VOCVEDM	LRRS	U.S EPA AND CALIFORNIA
5PVNJ7AV1R5T54566	PHMX2VOCVEDM	LRRS	U.S. EPA
5PVNJ7AV8R5T54578	PHMX2VOCVEDM	LRRS	U.S. EPA
5PVNJ7AV5R5T54568	PHMX2VOCVEDM	LRRS	U.S. EPA
5PVNJ7AVXR5T54579	PHMX2VOCVEDM	LRRS	U.S. EPA
5PVNJ7AV7R5T54569	PHMX2VOCVEDM	LRRS	U.S EPA AND CALIFORNIA
5PVNJ7AG6R5T50160	PHMX2VOCVEDM	LRRS	U.S. EPA
5PVNJ7AY2R5T50021	PHMX2VOCVEDM	LRRS	U.S EPA AND CALIFORNIA
5PVNJ7AP9R5T50265	PHMX2VOCVEDM	LRRS	U.S. EPA
5PVNV7AT3R5T50179	PHMX2VOCVEDM	LRRS	U.S. EPA
5PVNV7AV0R5T50478	PHMX2VOCVEDM	LRRS	U.S. EPA
5PVNJ7AT4R5T50378	PHMX2VOCVEDM	LRRS	U.S. EPA
5PVNJ7AV6R5T54580	PHMX2VOCVEDM	LRRS	U.S EPA AND CALIFORNIA

VIN	Vehicle Family Name	Emission Control System Code	Regulation Location
5PVNV7AV2R5T50479	PHMX2VOCVEDM	LRRS	U.S EPA AND CALIFORNIA
5PVNE7AT2R5T50156	PHMX2VOCVEDM	LRRS	U.S EPA AND CALIFORNIA
5PVNJ7AV0R5T54574	PHMX2VOCVEDM	LRRS	U.S. EPA
5PVNJ7AVXR5T54596	PHMX2VOCVEDM	LRRS	U.S EPA AND CALIFORNIA
5PVNJ7BY7R5T50160	PHMX2VOCVEDM	LRRS	U.S EPA AND CALIFORNIA
5PVNJ7AV1R5T54597	PHMX2VOCVEDM	LRRS	U.S EPA AND CALIFORNIA
5PVNJ7AV7R5T54586	PHMX2VOCVEDM	LRRS	U.S EPA AND CALIFORNIA
5PVNJ7AV3R5T54598	PHMX2VOCVEDM	LRRS	U.S. EPA
5PVNJ7AV5R5T54599	PHMX2VOCVEDM	LRRS	U.S EPA AND CALIFORNIA
5PVNJ7AV9R5T54587	PHMX2VOCVEDM	LRRS	U.S EPA AND CALIFORNIA
5PVNJ7AV8R5T54600	PHMX2VOCVEDM	LRRS	U.S EPA AND CALIFORNIA
5PVNJ7AJXR5T50058	PHMX2VOCVEDM	LRRS	U.S. EPA
5PVNJ7AVXR5T54601	PHMX2VOCVEDM	LRRS	U.S EPA AND CALIFORNIA
5PVNJ7AV0R5T54588	PHMX2VOCVEDM	LRRS	U.S EPA AND CALIFORNIA
5PVNE7AV1R5T50182	PHMX2VOCVEDM	LRRS	U.S. EPA
5PVNJ7AV1R5T54602	PHMX2VOCVEDM	LRRS	U.S. EPA
5PVNJ7AJ1R5T50059	PHMX2VOCVEDM	LRRS	U.S. EPA
5PVNJ7AV2R5T54589	PHMX2VOCVEDM	LRRS	U.S. EPA
5PVNV7AP3R5T50167	PHMX2VOCVEDM	LRRS	U.S EPA AND CALIFORNIA
5PVNJ7AV9R5T54590	PHMX2VOCVEDM	LRRS	U.S EPA AND CALIFORNIA
5PVNV7AV6R5T50484	PHMX2VOCVEDM	LRRS	U.S EPA AND CALIFORNIA
5PVNE7ARXR5T50006	PHMX2VOCVEDM	LRRS	U.S. EPA
5PVNJ7AV7R5T54605	PHMX2VOCVEDM	LRRS	U.S EPA AND CALIFORNIA
5PVNJ7AY4R5T50022	PHMX2VOCVEDM	LRRS	U.S EPA AND CALIFORNIA
5PVNJ7AV0R5T54591	PHMX2VOCVEDM	LRRS	U.S. EPA
5PVNV7ATXR5T50180	PHMX2VOCVEDM	LRRS	U.S EPA AND CALIFORNIA
5PVNJ7AV9R5T54606	PHMX2VOCVEDM	LRRS	U.S EPA AND CALIFORNIA
5PVNE7AV3R5T50183	PHMX2VOCVEDM	LRRS	U.S. EPA
5PVNJ7AP0R5T50266	PHMX2VOCVEDM	LRRS	U.S EPA AND CALIFORNIA
5PVNJ7AV4R5T54593	PHMX2VOCVEDM	LRRS	U.S EPA AND CALIFORNIA
5PVNJ7AV0R5T54610	PHMX2VOCVEDM	LRRS	U.S. EPA
5PVNV7AV0R5T50481	PHMX2VOCVEDM	LRRS	U.S EPA AND CALIFORNIA
5PVNV7AV8R5T50485	PHMX2VOCVEDM	LRRS	U.S. EPA
5PVNJ7AY6R5T50023	PHMX2VOCVEDM	LRRS	U.S. EPA
5PVNE7AT6R5T50158	PHMX2VOCVEDM	LRRS	U.S EPA AND CALIFORNIA
5PVNV7AV2R5T50482	PHMX2VOCVEDM	LRRS	U.S EPA AND CALIFORNIA
5PVNJ7AV8R5T54614	PHMX2VOCVEDM	LRRS	U.S. EPA
5PVNV7AV1R5T50487	PHMX2VOCVEDM	LRRS	U.S EPA AND CALIFORNIA
5PVNJ7AV8R5T54595	PHMX2VOCVEDM	LRRS	U.S EPA AND CALIFORNIA
5PVNV7AV5R5T50489	PHMX2VOCVEDM	LRRS	U.S. EPA
5PVNE7AV5R5T50184	PHMX2VOCVEDM	LRRS	U.S. EPA

VIN	Vehicle Family Name	Emission Control System Code	Regulation Location
5PVNV7AJ1R5T50034	PHMX2VOCVEDM	LRRS	U.S EPA AND CALIFORNIA
5PVNJ7AM4R5T50065	PHMX2VOCVEDM	LRRS	U.S EPA AND CALIFORNIA
5PVNJ7AV2R5T54625	PHMX2VOCVEDM	LRRS	U.S. EPA
5PVNE7AR1R5T50007	PHMX2VOCVEDM	LRRS	U.S. EPA
5PVNJ7AT4R5T50381	PHMX2VOCVEDM	LRRS	U.S. EPA
5PVNJ7AV6R5T54630	PHMX2VOCVEDM	LRRS	U.S EPA AND CALIFORNIA
5PVNJ7AL7R5T50021	PHMX2VOCVEDM	LRRS	U.S. EPA
5PVNJ7AV1R5T54633	PHMX2VOCVEDM	LRRS	U.S EPA AND CALIFORNIA
5PVNE7AV7R5T50185	PHMX2VOCVEDM	LRRS	U.S. EPA
5PVNJ7AV3R5T54634	PHMX2VOCVEDM	LRRS	U.S EPA AND CALIFORNIA
5PVNJ7AT6R5T50382	PHMX2VOCVEDM	LRRS	U.S. EPA
5PVNJ7AR9R5T50171	PHMX2VOCVEDM	LRRS	U.S EPA AND CALIFORNIA
5PVNJ7AV7R5T54636	PHMX2VOCVEDM	LRRS	U.S EPA AND CALIFORNIA
5PVNV7AT3R5T50182	PHMX2VOCVEDM	LRRS	U.S EPA AND CALIFORNIA
5PVNE7AV9R5T50186	PHMX2VOCVEDM	LRRS	U.S. EPA
5PVNV7AT5R5T50183	PHMX2VOCVEDM	LRRS	U.S EPA AND CALIFORNIA
5PVNJ7AV2R5T54639	PHMX2VOCVEDM	LRRS	U.S EPA AND CALIFORNIA
5PVNJ7AL9R5T50022	PHMX2VOCVEDM	LRRS	U.S. EPA
5PVNJ7AV0R5T54641	PHMX2VOCVEDM	LRRS	U.S EPA AND CALIFORNIA
5PVNJ7AV0R5T54607	PHMX2VOCVEDM	LRRS	U.S EPA AND CALIFORNIA
5PVNJ7AT2R5T50380	PHMX2VOCVEDM	LRRS	U.S EPA AND CALIFORNIA
5PVNJ7AT5R5T50387	PHMX2VOCVEDM	LRRS	U.S EPA AND CALIFORNIA
5PVNJ7AT7R5T50388	PHMX2VOCVEDM	LRRS	U.S EPA AND CALIFORNIA
5PVNJ7AV2R5T54608	PHMX2VOCVEDM	LRRS	U.S EPA AND CALIFORNIA
5PVNJ7AV2R5T54642	PHMX2VOCVEDM	LRRS	U.S EPA AND CALIFORNIA
5PVNJ7AP6R5T50269	PHMX2VOCVEDM	LRRS	U.S EPA AND CALIFORNIA
5PVNJ7AM6R5T50066	PHMX2VOCVEDM	LRRS	U.S EPA AND CALIFORNIA
5PVNV7AV9R5T50480	PHMX2VOCVEDM	LRRS	U.S EPA AND CALIFORNIA
5PVNJ7AV1R5T54583	PHMX2VOCVEDM	LRRS	U.S. EPA
5PVNJ7BY0R5T50162	PHMX2VOCVEDM	LRRS	U.S EPA AND CALIFORNIA
5PVNJ7AV3R5T54584	PHMX2VOCVEDM	LRRS	U.S. EPA
5PVNJ7AV5R5T54585	PHMX2VOCVEDM	LRRS	U.S. EPA
5PVNJ7AV6R5T54644	PHMX2VOCVEDM	LRRS	U.S EPA AND CALIFORNIA
5PVNJ7AV2R5T54611	PHMX2VOCVEDM	LRRS	U.S. EPA
5PVNJ7AY8R5T50024	PHMX2VOCVEDM	LRRS	U.S EPA AND CALIFORNIA
5PVNJ7AV4R5T54612	PHMX2VOCVEDM	LRRS	U.S EPA AND CALIFORNIA
5PVNJ7AVXR5T54646	PHMX2VOCVEDM	LRRS	U.S EPA AND CALIFORNIA
5PVNV7AP5R5T50168	PHMX2VOCVEDM	LRRS	U.S EPA AND CALIFORNIA
5PVNV7AM1R5T50111	PHMX2VOCVEDM	LRRS	U.S EPA AND CALIFORNIA
5PVNV7AV3R5T50488	PHMX2VOCVEDM	LRRS	U.S. EPA
5PVNV7AVXR5T50486	PHMX2VOCVEDM	LRRS	U.S. EPA

VIN	Vehicle Family Name	Emission Control System Code	Regulation Location
5PVNJ7AVXR5T54615	PHMX2VOCVEDM	LRRS	U.S. EPA
5PVNJ7AV1R5T54616	PHMX2VOCVEDM	LRRS	U.S EPA AND CALIFORNIA
5PVNV7AM3R5T50112	PHMX2VOCVEDM	LRRS	U.S EPA AND CALIFORNIA
5PVNJ7ATXR5T50384	PHMX2VOCVEDM	LRRS	U.S. EPA
5PVNJ7AV5R5T54618	PHMX2VOCVEDM	LRRS	U.S. EPA
5PVNJ7AV3R5T54648	PHMX2VOCVEDM	LRRS	U.S EPA AND CALIFORNIA
5PVNJ7AV7R5T54619	PHMX2VOCVEDM	LRRS	U.S. EPA
5PVNV7AV2R5T50496	PHMX2VOCVEDM	LRRS	U.S EPA AND CALIFORNIA
5PVNJ7AV3R5T54620	PHMX2VOCVEDM	LRRS	U.S EPA AND CALIFORNIA
5PVNV7AJ5R5T50036	PHMX2VOCVEDM	LRRS	U.S EPA AND CALIFORNIA
5PVNJ7AV5R5T54649	PHMX2VOCVEDM	LRRS	U.S EPA AND CALIFORNIA
5PVNJ7AV5R5T54621	PHMX2VOCVEDM	LRRS	U.S EPA AND CALIFORNIA
5PVNJ7AV3R5T54651	PHMX2VOCVEDM	LRRS	U.S. EPA
5PVNJ7AL0R5T50023	PHMX2VOCVEDM	LRRS	U.S. EPA
5PVNJ7AV9R5T54654	PHMX2VOCVEDM	LRRS	U.S EPA AND CALIFORNIA
5PVNJ7AG8R5T50161	PHMX2VOCVEDM	LRRS	U.S. EPA
5PVNJ7AV2R5T54656	PHMX2VOCVEDM	LRRS	U.S EPA AND CALIFORNIA
5PVNV7AT7R5T50184	PHMX2VOCVEDM	LRRS	U.S EPA AND CALIFORNIA
5PVNJ7AV6R5T54658	PHMX2VOCVEDM	LRRS	U.S. EPA
5PVNV7AV4R5T50497	PHMX2VOCVEDM	LRRS	U.S. EPA
5PVNJ7AV8R5T54659	PHMX2VOCVEDM	LRRS	U.S EPA AND CALIFORNIA
5PVNJ7AV8R5T54628	PHMX2VOCVEDM	LRRS	U.S. EPA
5PVNJ7AV4R5T54660	PHMX2VOCVEDM	LRRS	U.S EPA AND CALIFORNIA
5PVNJ7AV6R5T54661	PHMX2VOCVEDM	LRRS	U.S EPA AND CALIFORNIA
5PVNJ7AVXR5T54629	PHMX2VOCVEDM	LRRS	U.S. EPA
5PVNJ7AV8R5T54662	PHMX2VOCVEDM	LRRS	U.S EPA AND CALIFORNIA
5PVNJ7AVXR5T54663	PHMX2VOCVEDM	LRRS	U.S EPA AND CALIFORNIA
5PVNJ7AV1R5T54664	PHMX2VOCVEDM	LRRS	U.S. EPA
5PVNJ7AVXR5T54632	PHMX2VOCVEDM	LRRS	U.S. EPA
5PVNV7AV5R5T50492	PHMX2VOCVEDM	LRRS	U.S. EPA
5PVNE7AT8R5T50159	PHMX2VOCVEDM	LRRS	U.S. EPA
5PVNJ7AV5R5T54666	PHMX2VOCVEDM	LRRS	U.S. EPA
5PVNJ7AV0R5T54638	PHMX2VOCVEDM	LRRS	U.S. EPA
5PVNJ7AV7R5T54667	PHMX2VOCVEDM	LRRS	U.S. EPA
5PVNJ7AV9R5T54640	PHMX2VOCVEDM	LRRS	U.S. EPA
5PVNJ7AV8R5T54645	PHMX2VOCVEDM	LRRS	U.S. EPA
5PVNV7AT2R5T50187	PHMX2VOCVEDM	LRRS	U.S EPA AND CALIFORNIA
5PVNJ7AV9R5T54671	PHMX2VOCVEDM	LRRS	U.S EPA AND CALIFORNIA
5PVNJ7AV0R5T54672	PHMX2VOCVEDM	LRRS	U.S EPA AND CALIFORNIA
5PVNJ7AV0R5T54655	PHMX2VOCVEDM	LRRS	U.S EPA AND CALIFORNIA
5PVNJ7AT9R5T50392	PHMX2VOCVEDM	LRRS	U.S. EPA

VIN	Vehicle Family Name	Emission Control System Code	Regulation Location
5PVNJ7BY8R5T50166	PHMX2VOCVEDM	LRRS	U.S EPA AND CALIFORNIA
5PVNV7AT2R5T50190	PHMX2VOCVEDM	LRRS	U.S. EPA
5PVNV7AR8R5T50053	PHMX2VOCVEDM	LRRS	U.S EPA AND CALIFORNIA
5PVNJ7AV5R5T54683	PHMX2VOCVEDM	LRRS	U.S. EPA
5PVNJ7AV8R5T54676	PHMX2VOCVEDM	LRRS	U.S. EPA
5PVNJ7AV7R5T54684	PHMX2VOCVEDM	LRRS	U.S EPA AND CALIFORNIA
5PVNJ7AVXR5T54677	PHMX2VOCVEDM	LRRS	U.S EPA AND CALIFORNIA
5PVNJ7AV9R5T54685	PHMX2VOCVEDM	LRRS	U.S EPA AND CALIFORNIA
5PVNV7AR2R5T50050	PHMX2VOCVEDM	LRRS	U.S EPA AND CALIFORNIA
5PVNV7AM7R5T50114	PHMX2VOCVEDM	LRRS	U.S EPA AND CALIFORNIA
5PVNJ7AV6R5T54756	PHMX2VOCVEDM	LRRS	U.S. EPA
5PVNJ7AV0R5T54686	PHMX2VOCVEDM	LRRS	U.S EPA AND CALIFORNIA
5PVNJ7AV1R5T54678	PHMX2VOCVEDM	LRRS	U.S EPA AND CALIFORNIA
5PVNJ7BYXR5T50167	PHMX2VOCVEDM	LRRS	U.S EPA AND CALIFORNIA
5PVNJ7AV3R5T54679	PHMX2VOCVEDM	LRRS	U.S EPA AND CALIFORNIA
5PVNJ7AV6R5T54689	PHMX2VOCVEDM	LRRS	U.S EPA AND CALIFORNIA
5PVNJ7AVXR5T54680	PHMX2VOCVEDM	LRRS	U.S EPA AND CALIFORNIA
5PVNJ7AV2R5T54690	PHMX2VOCVEDM	LRRS	U.S EPA AND CALIFORNIA
5PVNJ7AV8R5T54757	PHMX2VOCVEDM	LRRS	U.S. EPA
5PVNJ7AV4R5T54691	PHMX2VOCVEDM	LRRS	U.S EPA AND CALIFORNIA
5PVNV7AV6R5T50498	PHMX2VOCVEDM	LRRS	U.S EPA AND CALIFORNIA
5PVNJ7AV6R5T54692	PHMX2VOCVEDM	LRRS	U.S EPA AND CALIFORNIA
5PVNJ7AV1R5T54681	PHMX2VOCVEDM	LRRS	U.S EPA AND CALIFORNIA
5PVNJ7AV8R5T54693	PHMX2VOCVEDM	LRRS	U.S EPA AND CALIFORNIA
5PVNJ7AV3R5T54682	PHMX2VOCVEDM	LRRS	U.S. EPA
5PVNJ7BY1R5T50168	PHMX2VOCVEDM	LRRS	U.S EPA AND CALIFORNIA
5PVNJ7AL4R5T50025	PHMX2VOCVEDM	LRRS	U.S. EPA
5PVNJ7AV2R5T54687	PHMX2VOCVEDM	LRRS	U.S EPA AND CALIFORNIA
5PVNJ7AV5R5T54697	PHMX2VOCVEDM	LRRS	U.S EPA AND CALIFORNIA
5PVNJ7AV4R5T54688	PHMX2VOCVEDM	LRRS	U.S EPA AND CALIFORNIA
5PVNJ7AV9R5T54699	PHMX2VOCVEDM	LRRS	U.S EPA AND CALIFORNIA
5PVNV7AV8R5T50499	PHMX2VOCVEDM	LRRS	U.S EPA AND CALIFORNIA
5PVNJ7AV3R5T54701	PHMX2VOCVEDM	LRRS	U.S EPA AND CALIFORNIA
5PVNJ7AVXR5T54694	PHMX2VOCVEDM	LRRS	U.S EPA AND CALIFORNIA
5PVNJ7AV7R5T54703	PHMX2VOCVEDM	LRRS	U.S EPA AND CALIFORNIA
5PVNJ7AV1R5T54695	PHMX2VOCVEDM	LRRS	U.S. EPA
5PVNV7ARXR5T50054	PHMX2VOCVEDM	LRRS	U.S. EPA
5PVNJ7AP8R5T50273	PHMX2VOCVEDM	LRRS	U.S. EPA
5PVNJ7APXR5T50274	PHMX2VOCVEDM	LRRS	U.S. EPA
5PVNV7AJ7R5T50037	PHMX2VOCVEDM	LRRS	U.S. EPA
5PVNV7AV6R5T50503	PHMX2VOCVEDM	LRRS	U.S EPA AND CALIFORNIA

VIN	Vehicle Family Name	Emission Control System Code	Regulation Location
5PVNJ7AT6R5T50396	PHMX2VOCVEDM	LRRS	U.S EPA AND CALIFORNIA
5PVNV7AV0R5T50500	PHMX2VOCVEDM	LRRS	U.S. EPA
5PVNJ7AV4R5T54710	PHMX2VOCVEDM	LRRS	U.S. EPA
5PVNJ7AV8R5T54712	PHMX2VOCVEDM	LRRS	U.S EPA AND CALIFORNIA
5PVNV7AT4R5T50188	PHMX2VOCVEDM	LRRS	U.S. EPA
5PVNJ7AV5R5T54702	PHMX2VOCVEDM	LRRS	U.S. EPA
5PVNV7AV2R5T50501	PHMX2VOCVEDM	LRRS	U.S. EPA
5PVNJ7AV1R5T54714	PHMX2VOCVEDM	LRRS	U.S. EPA
5PVNE7AN8R5T50082	PHMX2VOCVEDM	LRRS	U.S. EPA
5PVNJ7AV2R5T54723	PHMX2VOCVEDM	LRRS	U.S. EPA
5PVNV7AV4R5T50502	PHMX2VOCVEDM	LRRS	U.S EPA AND CALIFORNIA
5PVNJ7AV9R5T54704	PHMX2VOCVEDM	LRRS	U.S EPA AND CALIFORNIA
5PVNV7AR4R5T50051	PHMX2VOCVEDM	LRRS	U.S EPA AND CALIFORNIA
5PVNJ7AV6R5T54711	PHMX2VOCVEDM	LRRS	U.S. EPA
5PVNJ7AV5R5T54716	PHMX2VOCVEDM	LRRS	U.S. EPA
5PVNV7AVXR5T50505	PHMX2VOCVEDM	LRRS	U.S. EPA
5PVNJ7AN8R5T50711	PHMX2VOCVEDM	LRRS	U.S. EPA
5PVNJ7AV9R5T54721	PHMX2VOCVEDM	LRRS	U.S. EPA
5PVNJ7AV6R5T54773	PHMX2VOCVEDM	LRRS	U.S EPA AND CALIFORNIA
5PVNJ7AN5R5T50715	PHMX2VOCVEDM	LRRS	U.S EPA AND CALIFORNIA
5PVNV7AV1R5T50523	PHMX2VOCVEDM	LRRS	U.S EPA AND CALIFORNIA
5PVNJ7AV8R5T54855	PHMX2VOCVEDM	LRRS	U.S. EPA
5PVNJ7AV3R5T54956	PHMX2VOCVEDM	LRRS	U.S. EPA
5PVNV7AR2R5T50047	PHMX2VOCVEDM	LRRS	U.S EPA AND CALIFORNIA
5PVNJ7AT3R5T50372	PHMX2VOCVEDM	LRRS	U.S EPA AND CALIFORNIA
5PVNV7AR4R5T50048	PHMX2VOCVEDM	LRRS	U.S EPA AND CALIFORNIA
5PVNJ7AT7R5T50374	PHMX2VOCVEDM	LRRS	U.S EPA AND CALIFORNIA
5PVNJ7AV9R5T54461	PHMX2VOCVEDM	LRRS	U.S. EPA
5PVNV7AV0R5T50450	PHMX2VOCVEDM	LRRS	U.S EPA AND CALIFORNIA
5PVNJ7AV0R5T54462	PHMX2VOCVEDM	LRRS	U.S. EPA
5PVNV7AV2R5T50451	PHMX2VOCVEDM	LRRS	U.S EPA AND CALIFORNIA
5PVNJ7AT1R5T50371	PHMX2VOCVEDM	LRRS	U.S EPA AND CALIFORNIA
5PVNJ7AV2R5T54463	PHMX2VOCVEDM	LRRS	U.S. EPA
5PVNE7AT9R5T50154	PHMX2VOCVEDM	LRRS	U.S EPA AND CALIFORNIA
5PVNJ7AV4R5T54464	PHMX2VOCVEDM	LRRS	U.S. EPA
5PVNV7AV4R5T50452	PHMX2VOCVEDM	LRRS	U.S EPA AND CALIFORNIA
5PVNJ7AV6R5T54465	PHMX2VOCVEDM	LRRS	U.S. EPA
5PVNV7AV6R5T50453	PHMX2VOCVEDM	LRRS	U.S EPA AND CALIFORNIA
5PVNJ7AV8R5T54466	PHMX2VOCVEDM	LRRS	U.S. EPA
5PVNJ7AM0R5T50063	PHMX2VOCVEDM	LRRS	U.S. EPA
5PVNV7AV8R5T50454	PHMX2VOCVEDM	LRRS	U.S EPA AND CALIFORNIA

VIN	Vehicle Family Name	Emission Control System Code	Regulation Location
5PVNJ7AM2R5T50064	PHMX2VOCVEDM	LRRRA	U.S. EPA
5PVNJ7AV9R5T54475	PHMX2VOCVEDM	LRRS	U.S EPA AND CALIFORNIA
5PVNJ7AVXR5T54467	PHMX2VOCVEDM	LRRS	U.S EPA AND CALIFORNIA
5PVNJ7AV1R5T54468	PHMX2VOCVEDM	LRRS	U.S. EPA
5PVNV7AVXR5T50455	PHMX2VOCVEDM	LRRS	U.S EPA AND CALIFORNIA
5PVNJ7AV3R5T54469	PHMX2VOCVEDM	LRRS	U.S. EPA
5PVNV7AV1R5T50456	PHMX2VOCVEDM	LRRS	U.S EPA AND CALIFORNIA
5PVNJ7AVXR5T54470	PHMX2VOCVEDM	LRRS	U.S. EPA
5PVNJ7AV2R5T54477	PHMX2VOCVEDM	LRRS	U.S. EPA
5PVNJ7AV1R5T54471	PHMX2VOCVEDM	LRRS	U.S. EPA
5PVNJ7AV3R5T54472	PHMX2VOCVEDM	LRRS	U.S. EPA
5PVNV7AV3R5T50457	PHMX2VOCVEDM	LRRS	U.S EPA AND CALIFORNIA
5PVNJ7AV5R5T54473	PHMX2VOCVEDM	LRRS	U.S. EPA
5PVNJ7AV4R5T54478	PHMX2VOCVEDM	LRRS	U.S. EPA
5PVNJ7AV7R5T54474	PHMX2VOCVEDM	LRRS	U.S. EPA
5PVNJ7AV0R5T54476	PHMX2VOCVEDM	LRRS	U.S. EPA
5PVNV7AV5R5T50458	PHMX2VOCVEDM	LRRS	U.S EPA AND CALIFORNIA
5PVNJ7AV6R5T54479	PHMX2VOCVEDM	LRRS	U.S. EPA
5PVNV7AV7R5T50459	PHMX2VOCVEDM	LRRS	U.S EPA AND CALIFORNIA
5PVNJ7AV2R5T54480	PHMX2VOCVEDM	LRRS	U.S. EPA
5PVNJ7AT2R5T50377	PHMX2VOCVEDM	LRRS	U.S EPA AND CALIFORNIA
5PVNJ7AT9R5T50375	PHMX2VOCVEDM	LRRS	U.S. EPA
5PVNJ7AT6R5T50379	PHMX2VOCVEDM	LRRS	U.S EPA AND CALIFORNIA
5PVNV7AR6R5T50049	PHMX2VOCVEDM	LRRS	U.S EPA AND CALIFORNIA
5PVNJ7AV4R5T54481	PHMX2VOCVEDM	LRRS	U.S. EPA
5PVNV7AV3R5T50460	PHMX2VOCVEDM	LRRS	U.S EPA AND CALIFORNIA
5PVNJ7AV6R5T54482	PHMX2VOCVEDM	LRRS	U.S. EPA
5PVNV7AV5R5T50461	PHMX2VOCVEDM	LRRS	U.S EPA AND CALIFORNIA
5PVNJ7AV8R5T54483	PHMX2VOCVEDM	LRRS	U.S. EPA
5PVNJ7AVXR5T54484	PHMX2VOCVEDM	LRRS	U.S EPA AND CALIFORNIA
5PVNJ7AV1R5T54485	PHMX2VOCVEDM	LRRS	U.S. EPA
5PVNJ7AV3R5T54486	PHMX2VOCVEDM	LRRS	U.S. EPA
5PVNJ7AV6R5T54501	PHMX2VOCVEDM	LRRS	U.S EPA AND CALIFORNIA
5PVNJ7AV5R5T54487	PHMX2VOCVEDM	LRRS	U.S EPA AND CALIFORNIA
5PVNJ7AV7R5T54488	PHMX2VOCVEDM	LRRS	U.S. EPA
5PVNV7AV9R5T50463	PHMX2VOCVEDM	LRRS	U.S EPA AND CALIFORNIA
5PVNJ7AV9R5T54489	PHMX2VOCVEDM	LRRS	U.S. EPA
5PVNV7AV0R5T50464	PHMX2VOCVEDM	LRRS	U.S EPA AND CALIFORNIA
5PVNJ7AV5R5T54490	PHMX2VOCVEDM	LRRS	U.S. EPA
5PVNJ7AV7R5T54491	PHMX2VOCVEDM	LRRS	U.S EPA AND CALIFORNIA
5PVNJ7AV9R5T54492	PHMX2VOCVEDM	LRRS	U.S EPA AND CALIFORNIA

VIN	Vehicle Family Name	Emission Control System Code	Regulation Location
5PVNV7AV4R5T50466	PHMX2VOCVEDM	LRRS	U.S EPA AND CALIFORNIA
5PVNJ7AV0R5T54493	PHMX2VOCVEDM	LRRS	U.S. EPA
5PVNV7AV6R5T50467	PHMX2VOCVEDM	LRRS	U.S EPA AND CALIFORNIA
5PVNJ7AV2R5T54494	PHMX2VOCVEDM	LRRS	U.S. EPA
5PVNJ7AV4R5T54495	PHMX2VOCVEDM	LRRS	U.S. EPA
5PVNV7AV8R5T50468	PHMX2VOCVEDM	LRRS	U.S EPA AND CALIFORNIA
5PVNJ7AV6R5T54496	PHMX2VOCVEDM	LRRS	U.S. EPA
5PVNJ7AV8R5T54497	PHMX2VOCVEDM	LRRS	U.S. EPA