



# TECHNICAL SERVICE BULLETIN

Classification: AN12-013Q	Reference: ITB12-011Q	Date: January 22, 2024
------------------------------	--------------------------	---------------------------

## TELEMATICS SERVICE INFORMATION

This bulletin has been amended. See AMENDMENT HISTORY on the last page.  
Please discard previous versions of this bulletin.

- APPLIED VEHICLES:**
- |                                   |                             |
|-----------------------------------|-----------------------------|
| 2013 JX35 (L50)                   | 2017-2019 QX30 (H15)        |
| 2013 M37/M56 and M35 Hybrid (Y51) | 2019 QX50 (J55)             |
| 2013 QX56 (Z62)                   | 2014-2020 QX60 (L50)        |
| 2014-2019 Q50 (V37)               | 2014-2017 QX60 Hybrid (L50) |
| 2014-2018 Q50 Hybrid (V37)        | 2014-2019 QX80 (Z62)        |
| 2017-2019 Q60 (V37)               |                             |
| 2014-2019 Q70 (Y51)               |                             |
| 2014-2018 Q70 Hybrid (Y51)        |                             |
- APPLIED SYSTEMS:** Vehicles equipped with factory Navigation system

See ITB19-029 for models built after those listed above for a different Service Procedure.

## SERVICE INFORMATION

The Applied Vehicles are equipped with a wireless communication device called a Telematics Communication Unit (TCU). With an active Infiniti Connection® or Infiniti InTouch Services™, the TCU communicates with the Infiniti Data Center to provide various security and convenience services.

This bulletin contains important service procedures that must be performed properly in order to set-up and maintain the telematics system for the Applied Vehicles.

- A table has been provided on the next page that lists the model- and year-specific steps required to successfully configure a TCU after it has been replaced.
- A check OFF sheet has been provided on page 21 to print and check off steps as they are performed. **Please staple the completed Check OFF Sheet to the repair order.**

Infiniti Bulletins are intended for use by qualified technicians, not 'do-it-yourselfers'. Qualified technicians are properly trained individuals who have the equipment, tools, safety instruction, and know-how to do a job properly and safely. HINT: If you believe that a described condition may apply to a particular vehicle, DO NOT assume that it does. See your Infiniti retailer to determine if this applies to your vehicle.

## REQUIRED ACTIONS BY MODEL AND YEAR

**IMPORTANT:** After TCU replacement (steps 1-16 on pages 4-8):

- If all of the steps below are not completed, telematics services will not operate properly.
- Follow all of the model/year specific steps in this bulletin and use the Check OFF Sheet provided at the end of this bulletin (page 21).
- If the TCU is replaced and the steps were not followed, the warranty claim will be denied.

ORDER OF COMPLETION		1st	2nd	3rd	4th	5th
Model	Year	Write VIN	Configure TCU	Register I-Keys	Turn ON TCU	Register TCU with SXM
JX35	2013	✓				
M37/M56 and M35 Hybrid	2013	✓				
QX56	2013	✓				
Q50 and Q50 Hybrid	2014-2015	✓				
	2016-2018	✓	✓	✓		
Q50	2019	✓		✓	✓	✓
Q60	2017-2018	✓	✓	✓		
	2019	✓		✓	✓	✓
Q70 and Q70 Hybrid	2014-2017	✓				
	2018	✓	✓			
Q70	2019	✓	✓		✓	✓
QX30	2017-2019	✓	✓			
QX50	2019	✓	✓	✓	✓	✓
QX60 and QX60 Hybrid	2014-2016	✓				
	2017	✓		✓		
QX60	2018-2020	✓		✓	✓	✓
QX80	2014-2017	✓				
	2018-2019	✓	✓	✓	✓	✓

**HINT:** Since 2G/3G networks are no longer supported, replacing TCUs in some older vehicles will not require a Turn-ON and Registration process.

TABLE OF CONTENTS:

- Required Actions by Model and Year ..... page 2
- TCU Replacement ..... page 4
- Check OFF Sheet ..... page 21
- Manually Enter VIN Data ..... page 22
- SOS Light Diagnosis Information ..... page 23

**HINT:** If the green SOS light is OFF, or has turned OFF, the vehicle may no longer be in Dealer Demo Mode and SXM has disabled all services. The vehicle will need to be enrolled for customer use. Do NOT replace the TCU.

## TCU REPLACEMENT

### HINT:

- Each TCU is registered to a specific Vehicle Identification Number (VIN). TCUs cannot be “swapped” between vehicles. Once a TCU is registered to a vehicle, the TCU cannot be used in another vehicle.
- During this procedure, Intelligent Key Registration must be performed for the vehicles listed in this table. You **MUST** have **ALL customer keys** collected.

2016-2019 Q50	2017-2020 QX60
2016-2018 Q50 Hybrid	2017 QX60 Hybrid
2017-2019 Q60	2018-2019 QX80
2019 QX50	

- The new/replacement TCU must come from Nissan North America parts supply.
- Some vehicles require **TCU Configuration** after replacement. Refer to step 22 on page 9.
- The VIN **MUST** be written to the replacement TCU after installation.
- The replacement TCU must be registered with SXM.

### Save VIN Data

1. Set the parking brake.
2. Connect the C-III plus VI to the vehicle.
3. Turn the ignition ON.
4. Launch C-III plus on the CONSULT PC.

5. Select Diagnosis (One System).

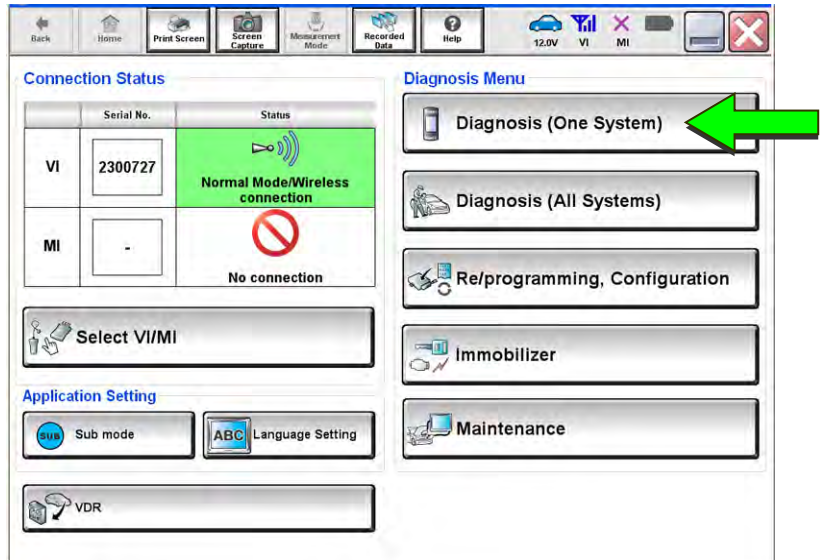


Figure 1

6. Select TELEMATICS.

**HINT:** If the VIN data cannot be saved, proceed to step 16 on page 7. You will be instructed to manually enter the VIN at step 18.

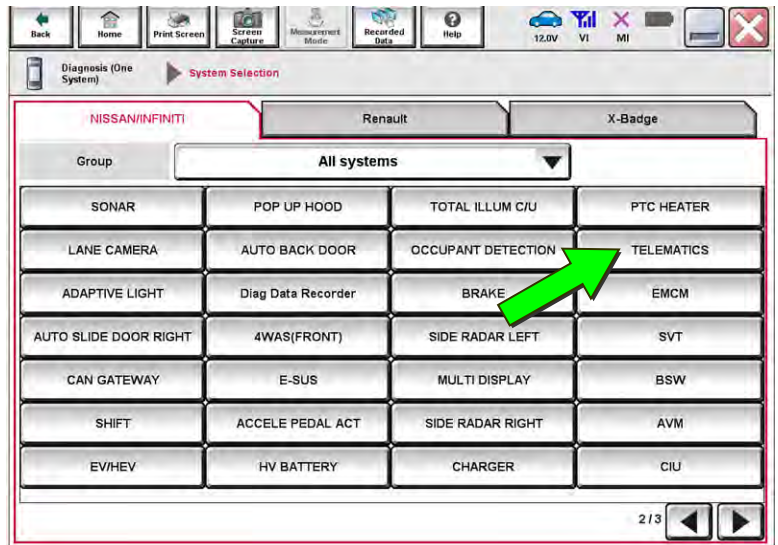


Figure 2

7. Select Work Support.

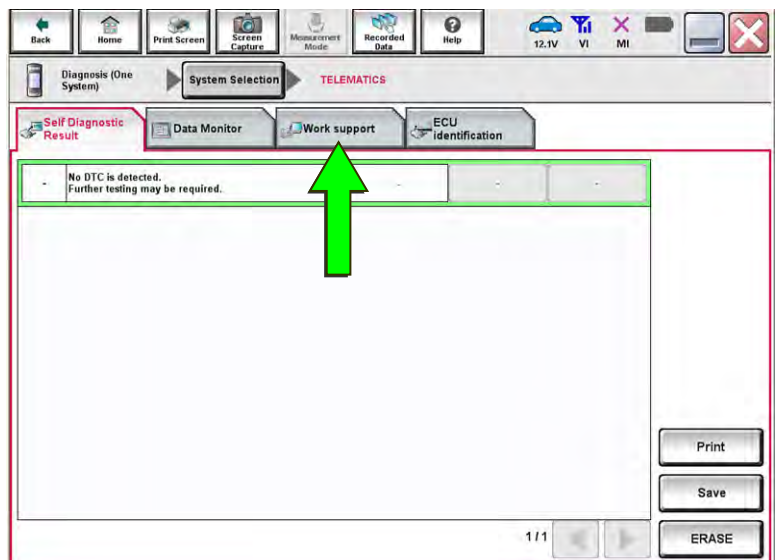


Figure 3

8. Select **SAVE VIN DATA**.

9. Select **Start**.

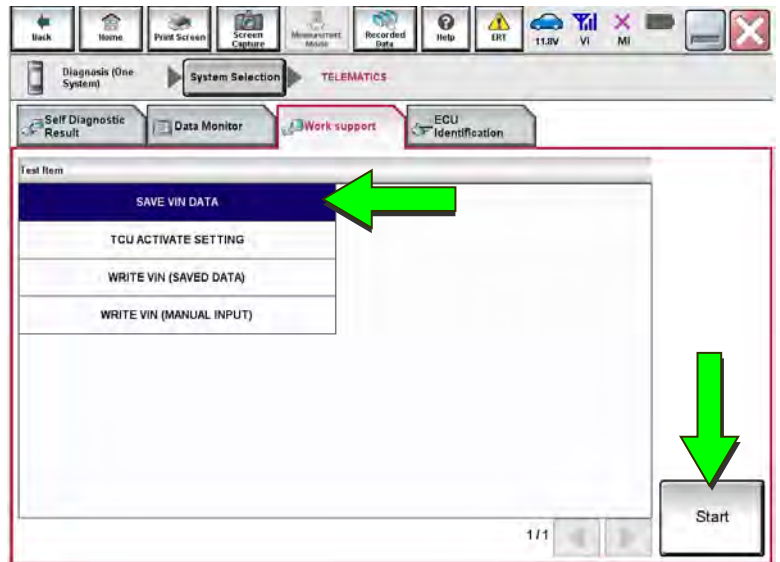


Figure 4

10. Select **Start** again.

**HINT:** If the VIN data cannot be saved, you will have to manually enter the VIN later in this procedure.

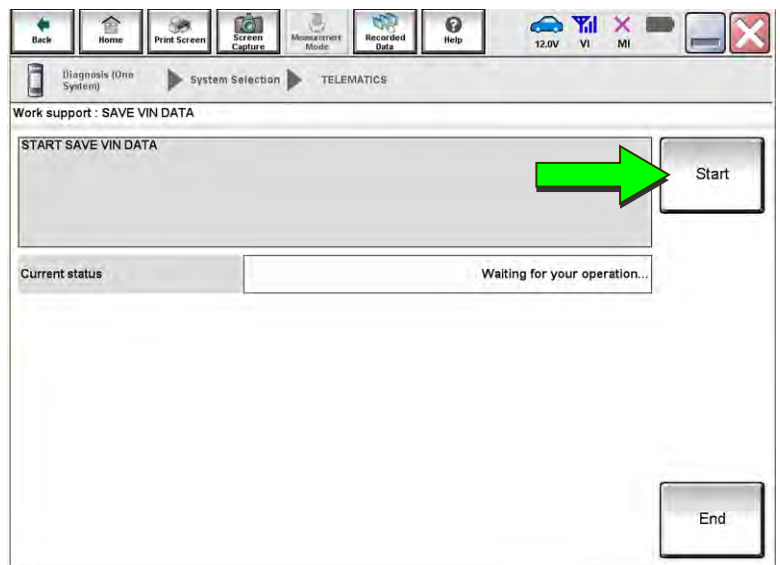


Figure 5

11. Select **End**.

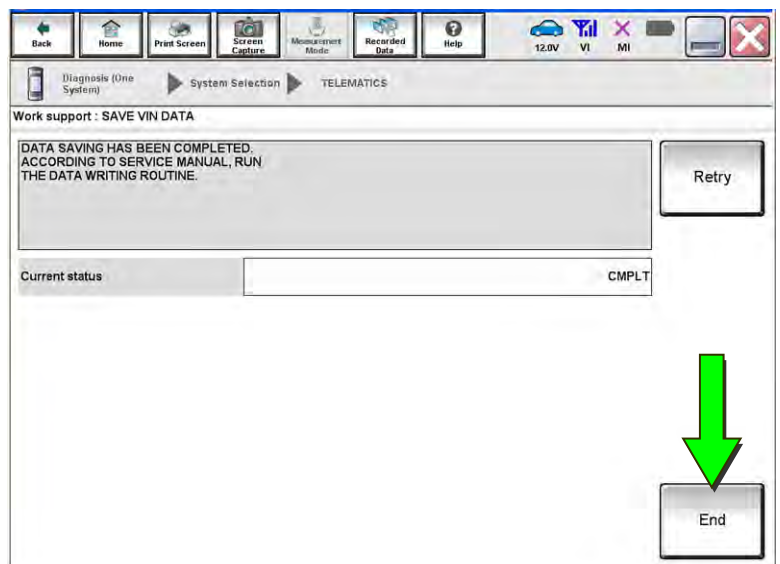


Figure 6

12. Navigate C-III plus to the screen shown in Figure 7.

- **Diagnosis (One System) > TELEMATICS > ECU Identification**

13. Write the original **SIM ID** Number on the repair order.

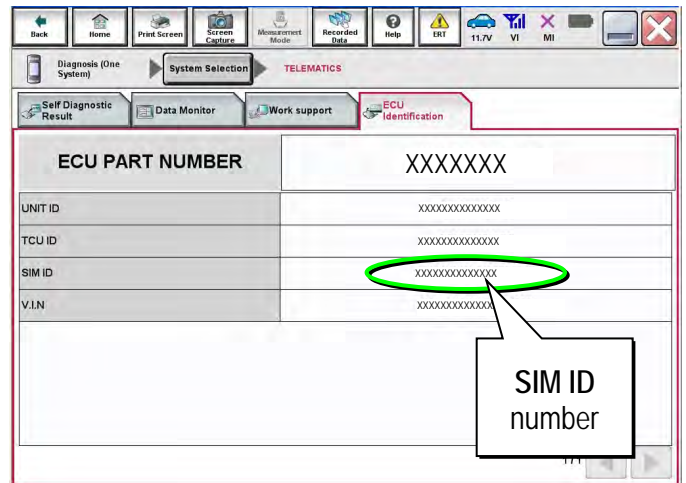


Figure 7

### Remove the Original TCU

14. Remove the TCU from the vehicle. Refer to the ESM for removal information.

- Refer to the ESM: **DRIVER INFORMATION & MULTIMEDIA > AUDIO VISUAL & NAVIGATION SYSTEM > REMOVAL AND INSTALLATION > TCU**

Step 15 must be performed **AFTER** the original TCU is removed from the vehicle and **BEFORE** the replacement TCU is installed.

15. Write down the following information:

- VIN.
- International Mobile Equipment Identity Number (IMEI) of the **original TCU**.  
This number is located on the TCU.
- IMEI Number of the **replacement TCU**.  
This number is located on the TCU.

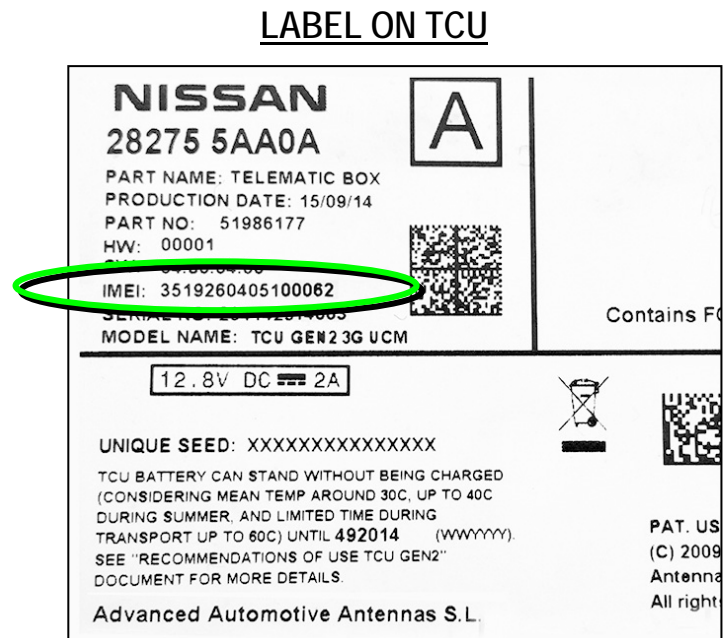


Figure 8

## Install the New TCU

16. Install the new / replacement TCU into the vehicle. Refer to the ESM for installation information.

- Refer to the ESM: **DRIVER INFORMATION & MULTIMEDIA > AUDIO VISUAL & NAVIGATION SYSTEM > REMOVAL AND INSTALLATION > TCU**

## Write VIN to TCU

17. Connect C-III plus and navigate to **TELEMATICS > Work support**.

- Refer to steps 1-7 on pages 4-5.

18. Select **WRITE VIN (SAVED DATA)**.

**HINT:** If VIN DATA could not be saved in step 10, proceed to **Manually Enter VIN Data** on page 22.

19. Select **Start**.

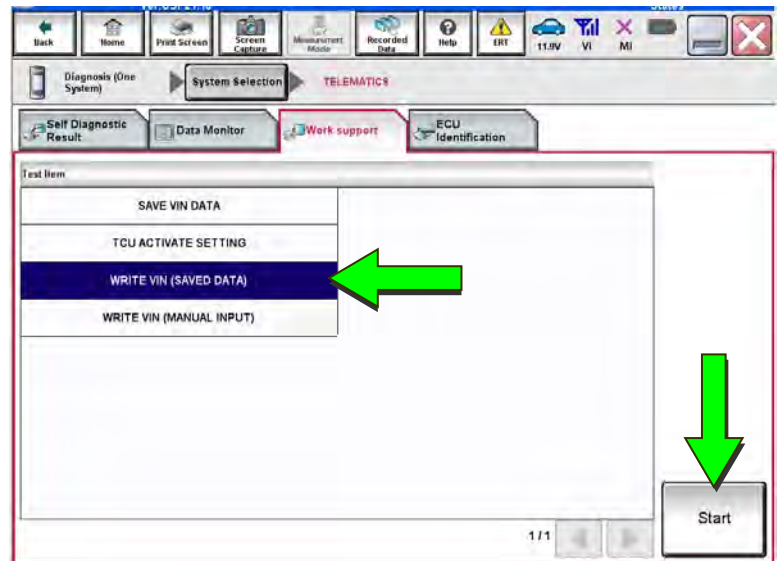


Figure 9

20. Select **Start** again.

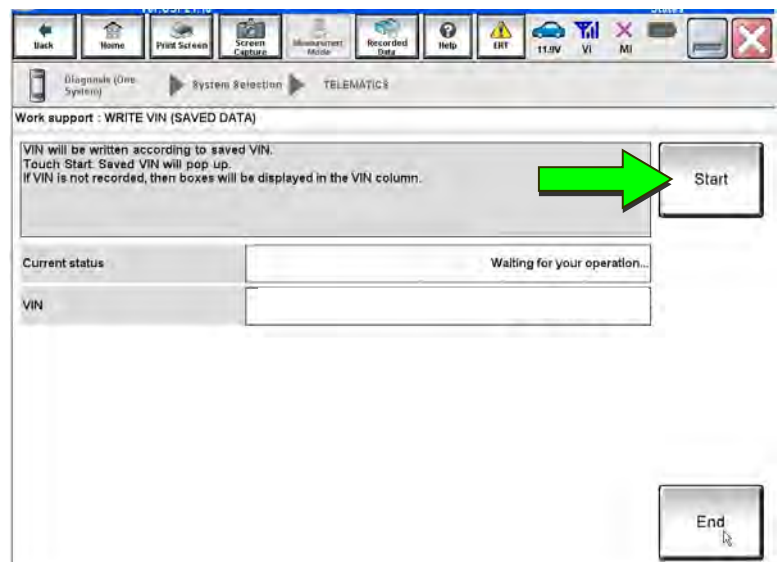


Figure 10



21. Select **End**.

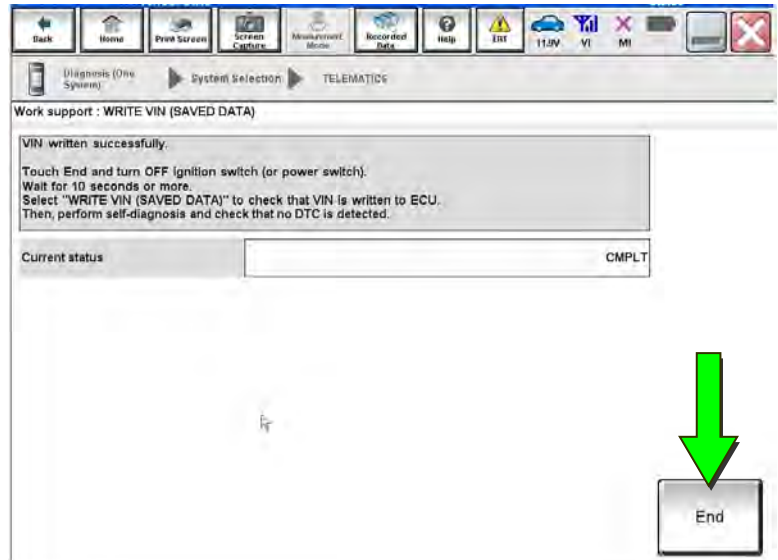


Figure 11

22. Is the vehicle in the table below?

- **YES:** Proceed to step 23.
- **NO:** Skip to step 33 on page 12.

2016-2018 Q50 *	2017-2018 Q60
2016-2018 Q50 Hybrid *	2017-2019 QX30
2018-2019 Q70	2019 QX50
2018 Q70 Hybrid	2018-2019 QX80

\* For 2018 vehicles, TCU Configuration is needed only if the TCU ID number begins with "2047" (see Figure 18 on page 12).

### Configure TCU

23. Select **Re/programming, Configuration**.

**HINT:** C-III plus screens for steps 24-26 are not shown.

24. Read the precautions on C-III plus screen and then select **Next**.

25. Select the model and model year.

26. Select **Select**, and then select **Confirm**.

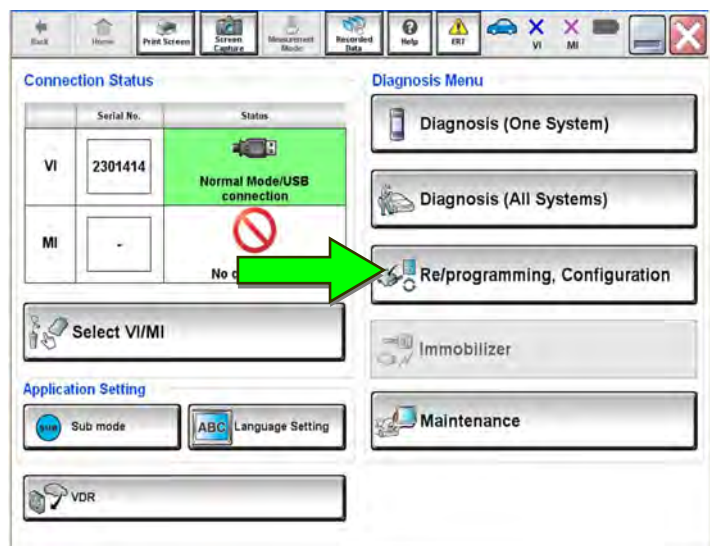


Figure 12

27. Select **TELEMATICS**.

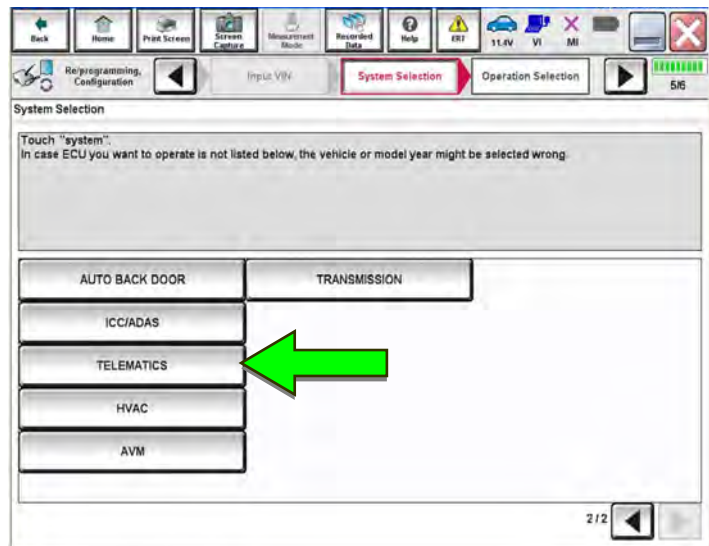


Figure 13

28. Select **After ECU Replacement**. under **VEHICLE CONFIGURATION**.

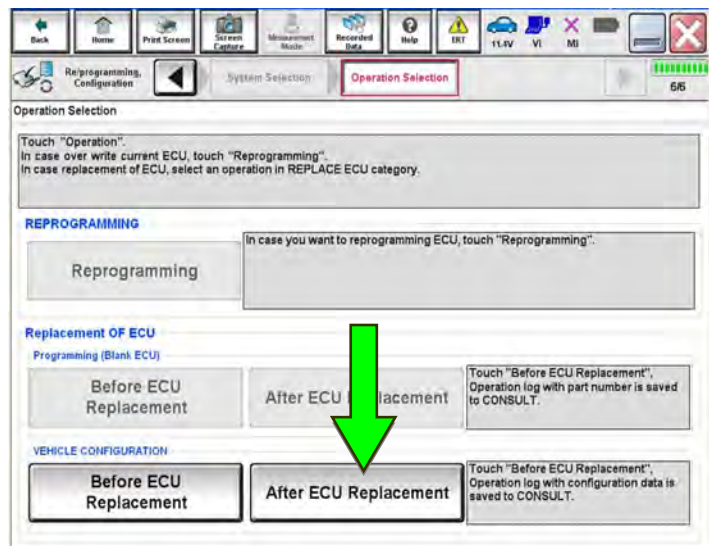


Figure 14

29. Select **Manual selection**.

30. Select the applicable Type ID:

For 2016-2018 Q50 and Q50 Hybrid:

28277-1HK0A

For 2018 Q70 and Q70 Hybrid:

28277-5UV0A

For 2019 Q70:

28277-6FL2A

For 2017-2018 Q60:

28227-5CA2A

For 2017-2019 QX30:

28277-5DA2A

For 2019 QX50:

28277-6FL1B

For 2018-2019 QX80:

28277-6FL1C

**HINT:** If C-III plus automatically selects the Type ID, there will be no options shown under Type ID and Figure 16 will not display. Skip to step 32.

31. Select **Next**.

32. Select **OK**.

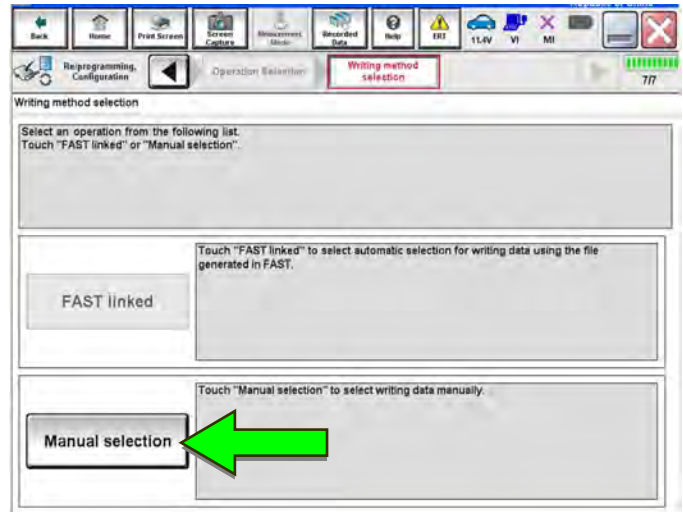


Figure 15

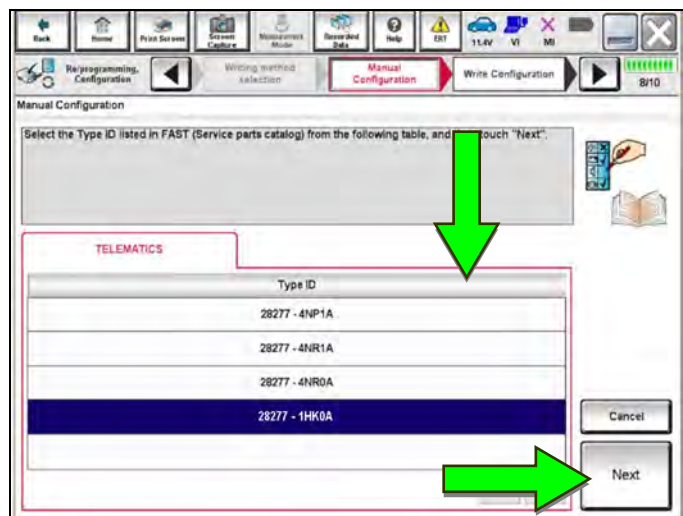


Figure 16

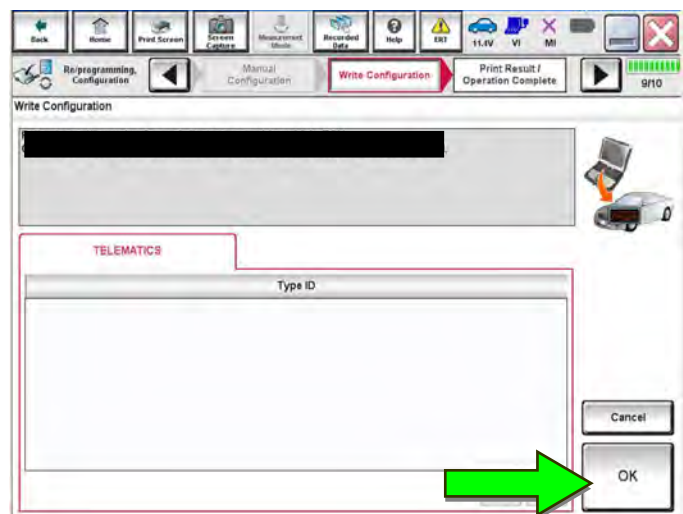


Figure 17

Write New SIM ID Number on the Repair Order

33. Write the new SIM ID number on the repair order.

a. Navigate C-III plus to the screen shown in Figure 18.

**Diagnosis (One System) > TELEMATICS > ECU Identification**

b. Locate the SIM ID number and write it on the repair order as "New SIM ID".

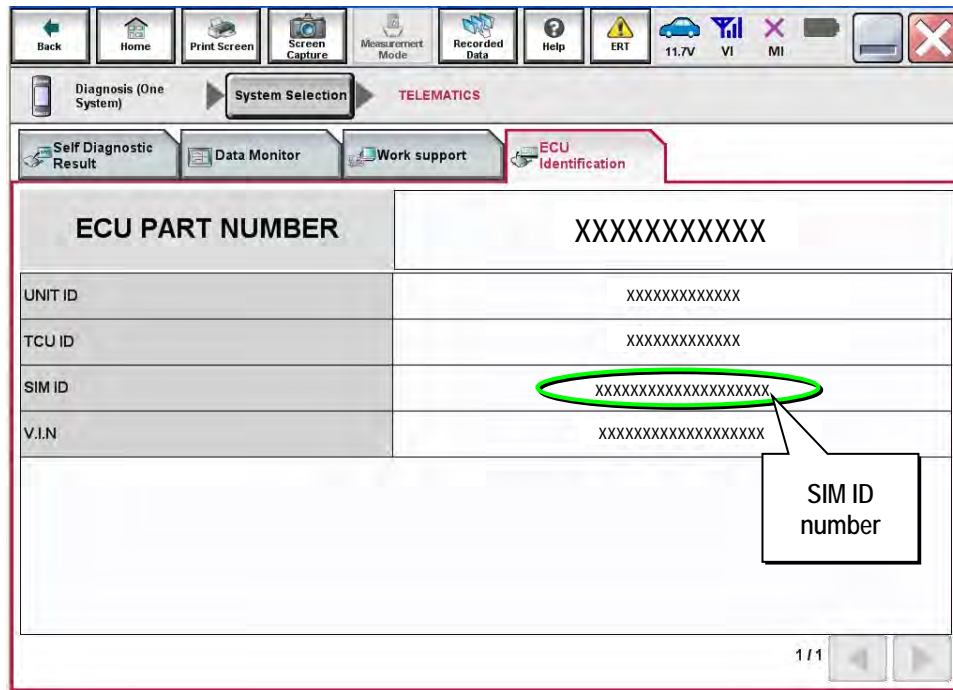


Figure 18

## Intelligent Key Registration (some vehicles)

34. If needed, perform Intelligent Key registration for all customer keys.

- The vehicles listed in this table require Intelligent Key registration.

2016-2019 Q50	2017-2020 QX60
2016-2018 Q50 Hybrid	2017 QX60 Hybrid
2017-2019 Q60	2018-2019 QX80
2019 QX50	

- Refer to the C-III plus operations manual for key registration instructions.
- If the vehicle you are working on is not listed in the above table, key registration is not needed.

**HINT:** The Remote Engine Start and Stolen Vehicle Locator features (if so equipped) will not function if Intelligent Key registration is not completed, and DTC B130C will be stored.

## Turn ON TCU

35. Make sure the vehicle is **not** in shipping mode (shipping mode = extended storage switch pulled OUT).

If needed, use the following steps to confirm the vehicle is **not** in shipping mode:

- a. Make sure the ignition is OFF.
- b. Open the driver's door and leave it open.
- c. Locate the interior fuse panel and remove the cover.
- d. Push the white extended storage switch IN.
- e. Turn the ignition ON.
- f. Turn the ignition OFF.
- g. Wait at least 2 seconds, and then turn the ignition ON.
- h. Make sure the extended storage warning message is not displayed in the combination meter/display.

36. Connect the C-III plus VI to the vehicle.

37. Set the parking brake and confirm the ignition is ON.

38. Launch C-III plus on the CONSULT PC.

39. Select **Diagnosis (One System)**.

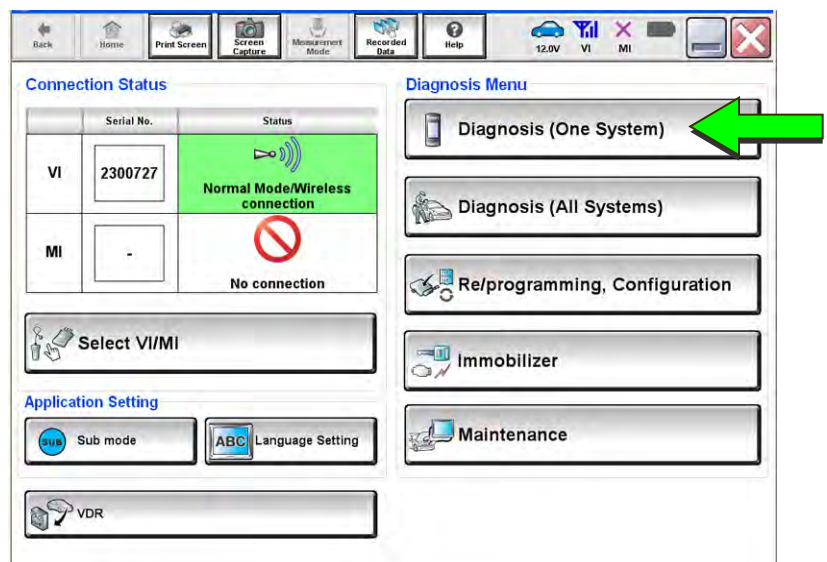


Figure 19

40. Select TELEMATICS.

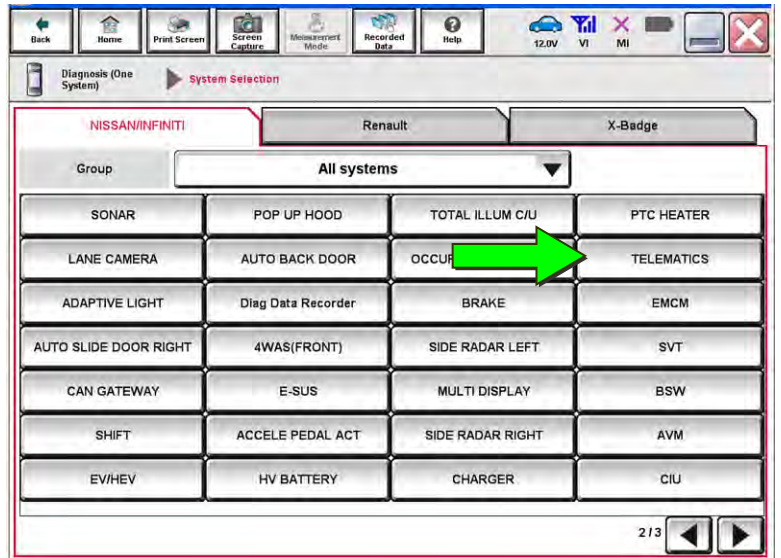


Figure 20

41. Select Work Support.

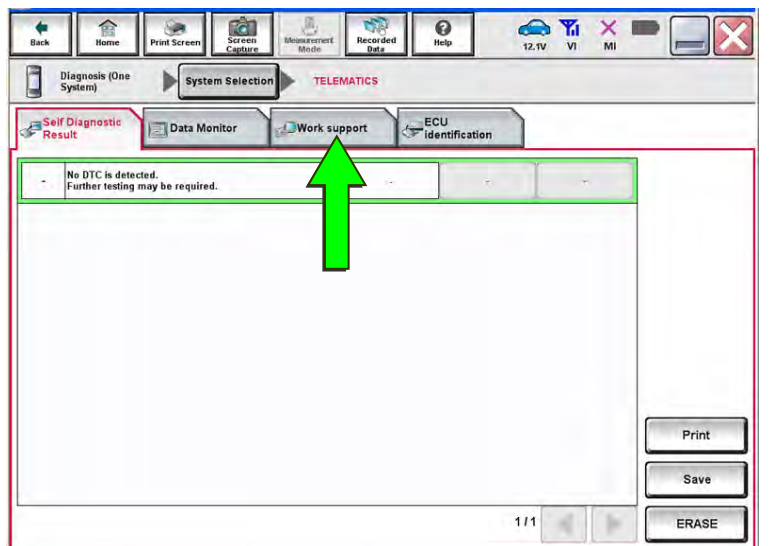
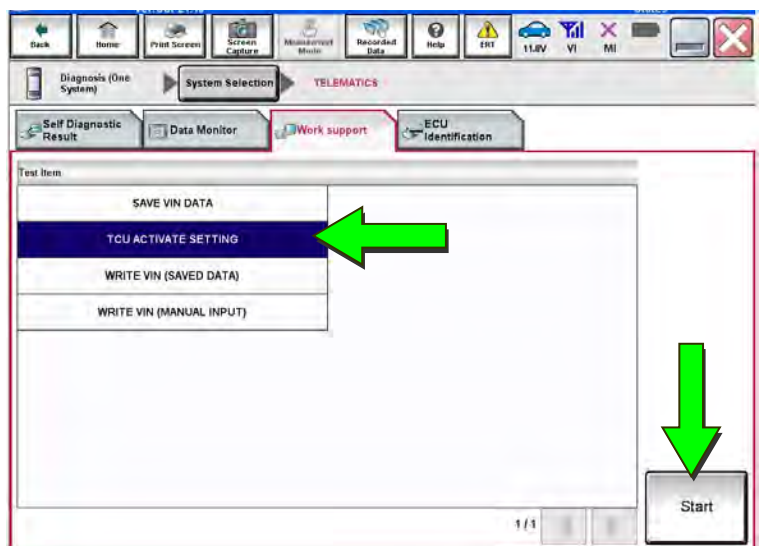


Figure 21

42. Select TCU ACTIVATE SETTING.



43. Select Start.

Figure 22

44. Select **Start** again.

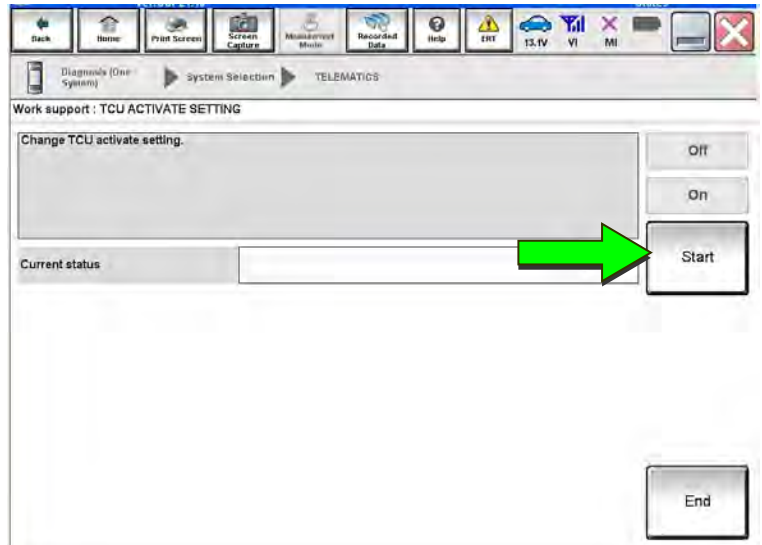


Figure 23

45. Select **On** to turn ON the TCU.

46. Make sure Current status is On.

47. Select **END**.

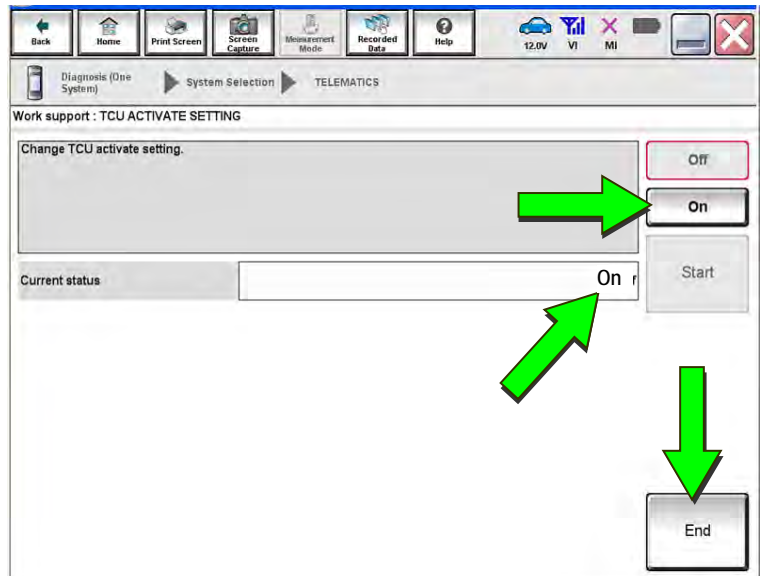


Figure 24



## TCU Registration

The following items must first be completed before calling Infiniti Customer Care (SXM), or services may not function properly:

- New / replacement TCU is installed in the vehicle.
- WRITE VIN (SAVED DATA) has been completed.
- If needed, Manual TCU Configuration has been performed.
- If needed, all customer Intelligent Keys have been registered.
- The TCU is turned ON.
- SIM ID number for the original and replacement TCU is written on the repair order.
- IMEI number for original and replacement TCU is written on the repair order.

48. Call Infiniti Customer Care at **1-800-334-7858**. Listen for additional applicable prompts. Hours of operation are listed below.

During this call:

- You will be asked for your name, dealership name, and all of the information collected.
- The agent will unregister the original TCU and register the replacement TCU. If needed, the agent will call back to confirm TCU registration has completed.
- The vehicle may need to be moved outside if the cellular connection is not strong enough. See **Check TCU Cellular Reception** on page 18.

### **HINT:**

- The agent will ask for the SIM ID number of the original and the replacement TCU. If necessary, they may ask for the IMEI number as a backup.
- The TCU will not be able to communicate with the Infiniti Data Center if step 48 is not completed.
- After registration, it may take up to 48 hours for services to be functional.
- TCU registration does not enroll the customer in Infiniti Connection® or Infiniti InTouch Services™.

### **Infiniti Customer Care (1-800-334-7858) – Hours of Operation (Central Time Zone)**

Monday – Friday: 7AM – 10PM

Saturday: 8AM – 5PM

Special Holiday Hours:

Closed Thanksgiving, Christmas, and New Year's Day

Christmas Eve: 7AM – 7PM

New Year's Eve: 7AM – 7PM

## Check TCU Cellular Reception

49. Select **Diagnosis (One System)** and then **TELEMATICS**.
50. Select **Data Monitor** and then **Cellular level**.
51. Select **START**.

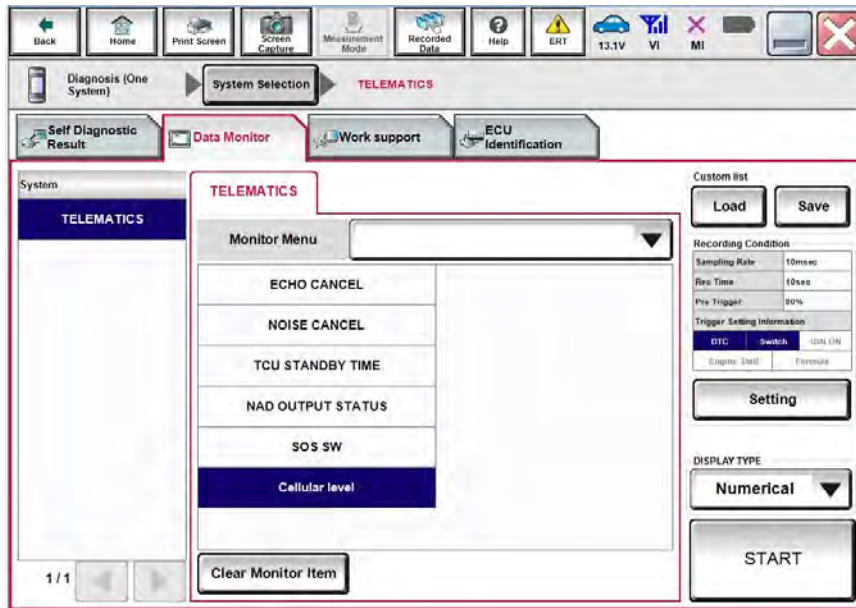


Figure 25

52. Check the **Cellular level** and confirm that it is "GOOD".
53. If the **Cellular level** is "MARGINAL" or "LOW", move the vehicle to an area with a good signal.

**HINT:** The **Cellular level** constantly updates. Safely relocate the vehicle until a "GOOD" Cellular level is received.

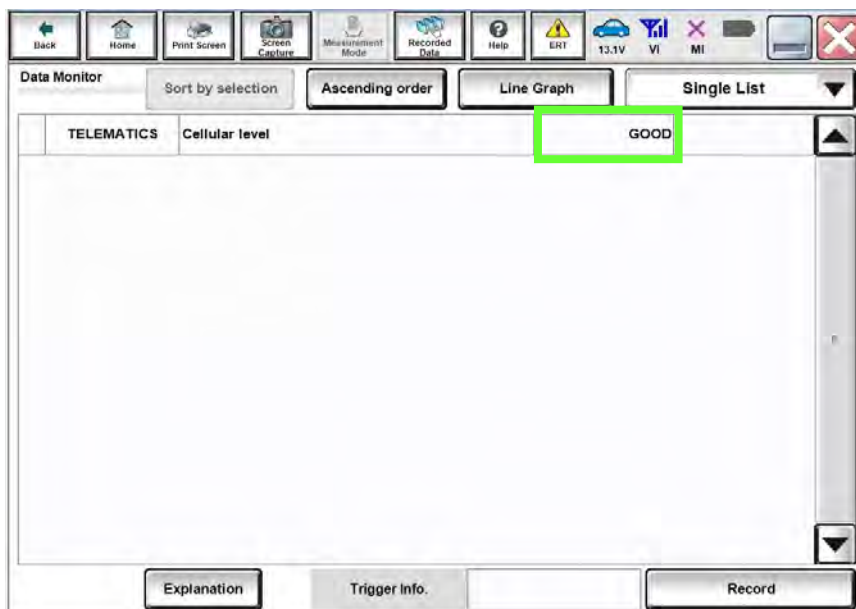


Figure 26

54. Press the **NAVI** or **DEST** button.



Figure 27



Figure 28

55. Select **Infiniti Connection**, **Infiniti InTouch Services**, or **Destination Menu**.

**HINT:** If none of the above options are displayed, proceed to step 56.

EXAMPLE



Figure 29

56. Select **Connected Search**.

EXAMPLE

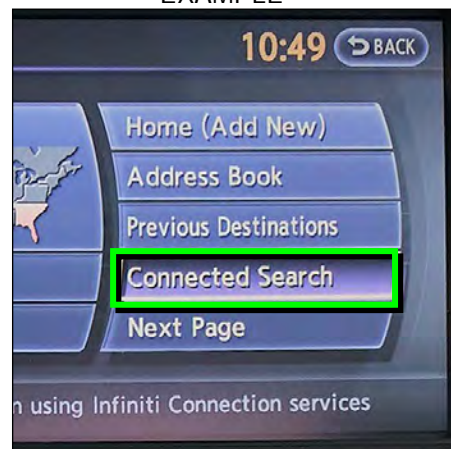


Figure 30

57. Enter a POI (Point of Interest) location, and select "OK" or "Search".

Example: "Starbucks"

EXAMPLE

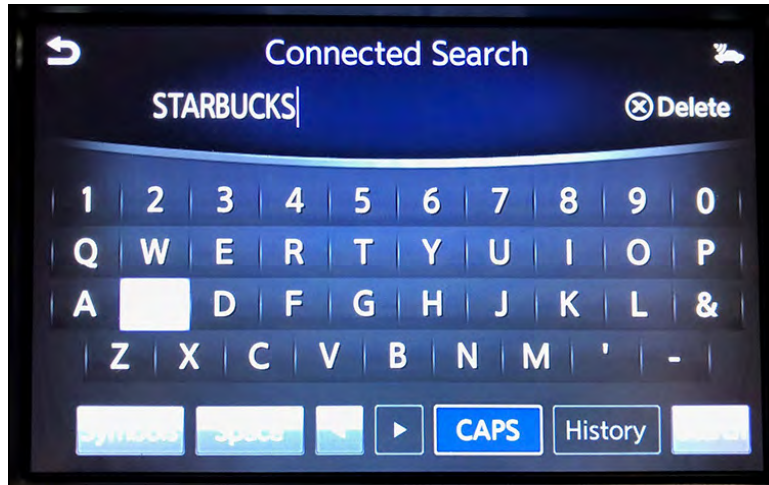


Figure 31

58. Confirm the POI location displays.

EXAMPLE

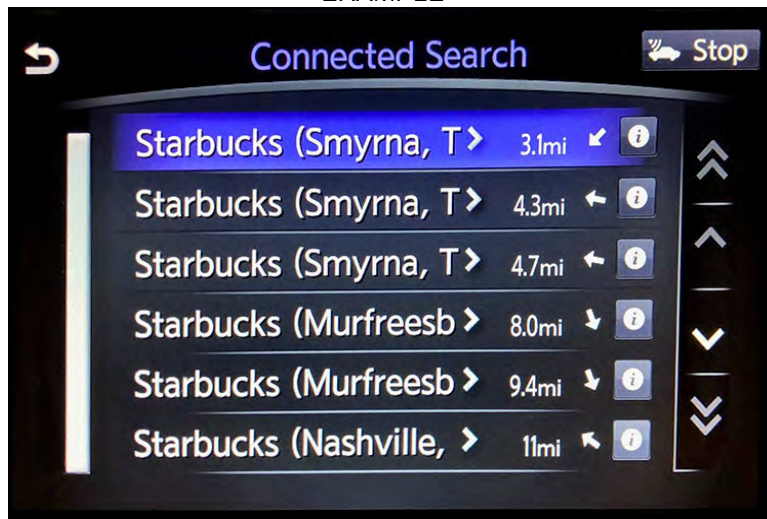


Figure 32

59. If the "Connected Search" does not complete successfully:

- If TCU registration with SXM has just been performed, please allow up to 48 hours and try again.
- For an unsold vehicle, call Infiniti Customer Care at 1-800-334-7858.
- If the vehicle has been sold, the customer will need to be enrolled in Infiniti Connection® or Infiniti InTouch Services™ for the SOS light to be illuminated and for Infiniti Connection® or Infiniti InTouch Services™ to be enabled. Refer to **SOS Light Diagnosis Information** on page 23.

60. Turn the ignition OFF.

## CHECK OFF SHEET

### IMPORTANT:

- If all of the steps below are not completed, telematics services will not operate properly.
- Follow all of the steps in this bulletin and use the Check OFF Sheet provided below.
- If the TCU is replaced and the steps were not followed, the warranty claim will be charged back to the dealer.
- **Please staple the completed Check OFF Sheet to repair order.**

Perform the following if TCU the has been replaced:

- Complete the Applied Vehicle-specific Action in the order listed.
- Check OFF the Action as performed.

	CHECK BOX	APPLIED VEHICLES	ACTION
1		All Vehicles	Write VIN to TCU (1)
2		2016-2018 Q50 * 2016-2018 Q50 Hybrid * 2018-2019 Q70 2018 Q70 Hybrid 2017-2018 Q60 2017-2019 QX30 2019 QX50 2018-2019 QX80	Configure TCU (2)
3		2016-2019 Q50 2016-2018 Q50 Hybrid 2017-2019 Q60 2019 QX50 2017-2020 QX60 2017 QX60 Hybrid 2018-2019 QX80	Register Intelligent Key (3)
4		2019 Q50 2019 Q60 2019 Q70 2019 QX50 2018-2020 QX60 2018-2019 QX80	Turn ON TCU (4)
5		2019 Q50 2019 Q60 2019 Q70 2019 QX50 2018-2020 QX60 2018-2019 QX80	Register TCU with SXM (5)

(1) Refer to page 8, step 17, Section **Write VIN to TCU**

(2) Refer to page 9, section **Configure TCU**

(3) Refer to page 13, step 34, Section **Intelligent Key Registration**

(4) Refer to page 14, section **Turn ON TCU**

(5) Refer to page 17, section **TCU Registration**

\* Model year 2018 vehicles with TCU ID that begins with "2047"

## Manually Enter VIN Data (if needed)

This is needed ONLY if automatic "SAVE VIN DATA" or "WRITE VIN (SAVED DATA)" did not complete correctly.

1. Select **WRITE VIN (MANUAL INPUT)**.

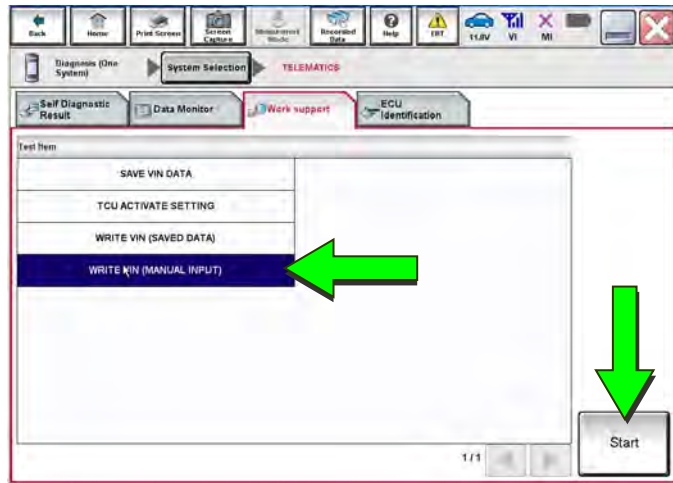


Figure 1a

2. Select **Start**.

3. Enter the VIN.

a) Touch the **VIN (1ST TIME)** input field and type in the VIN.

b) Touch the **VIN (2ND TIME)** input field and type in the VIN again.

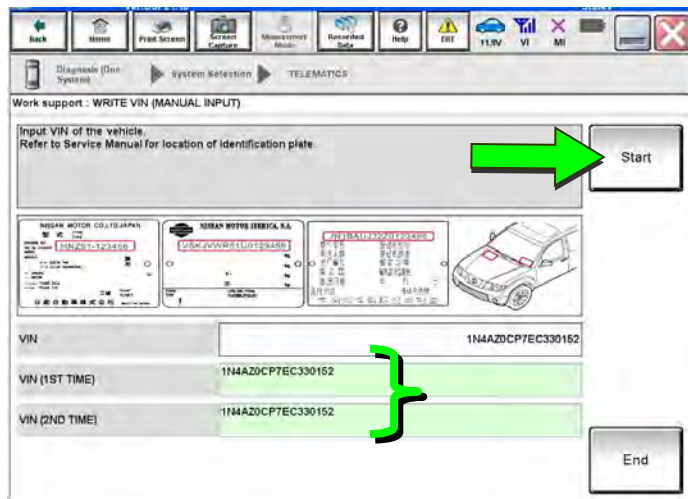


Figure 2a

4. Select **Start**.

5. Select **End**.

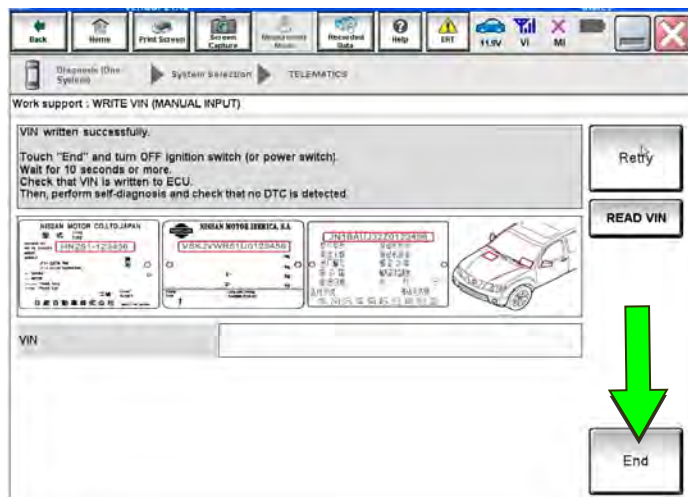


Figure 3a

Return to step 21 on page 9.

## SOS Light Diagnosis Information (if needed)

**HINT:** Dealer Demo Mode will expire after 2 months from the vehicle build date. All services will be disabled, including the SOS light. Do NOT replace the TCU.

Perform the steps below if the SOS light is not illuminated.

1. With the vehicle in an area of known good cellular reception, use C-III plus to confirm the TCU is turned ON.
2. Go to <https://owners.infinitiusa.com/iowners/vinlookup/dealervinlookup>.
3. Enter the VIN.

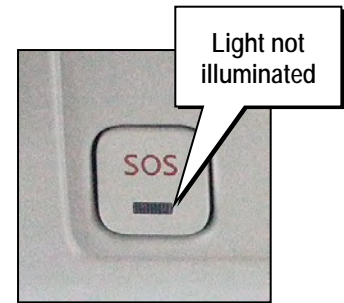


Figure 4a

### Vehicle is shown as not enrolled:

- The customer is not enrolled in Infiniti Connection® or Infiniti InTouch Services™. Have the customer enroll and then confirm the SOS light illuminates.

**HINT:** It may take up to 48 hours for the services to be activated and the SOS light to illuminate after enrollment is completed.

### “VIN not found” displays:

- The vehicle needs to be registered in the Infiniti Owner Portal and enrolled in Infiniti Connection® or Infiniti InTouch Services™. Have the customer register and enroll; and then confirm the SOS light illuminates.

**HINT:** It may take up to 48 hours for the services to be activated and the SOS light to illuminate after enrollment is completed.

### Vehicle is shown as enrolled:

- Confirm the customer's Infiniti Connection® or Infiniti InTouch Services™ subscription.

The customer can find this information three ways:

- Log into to the Infiniti InTouch Services™ portal and locate "Manage Subscription" on the first page.
- Log into the Infiniti InTouch Services™ mobile app and go to "Vehicle Information" > "Package Info".
- Call Infiniti Customer Care at 1-800-334-7858.

If the customer is enrolled in the Premium or Premium Plus Package, call TECH LINE for diagnosis.

If the customer is enrolled in the Select Package, the SOS light is **not intended to illuminate**. No further action is needed.

## AMENDMENT HISTORY

PUBLISHED DATE	REFERENCE	DESCRIPTION
March 12, 2012	ITB12-011	Original bulletin published.
May 30, 2012	ITB12-011a	Steps 7 and 8 revised.
September 4, 2012	ITB12-011b	APPLIED VEHICLES section revised.
September 23, 2013	ITB12-011c	APPLIED VEHICLES section revised.
January 5, 2015	ITB12-011d	APPLIED VEHICLES section revised, and a statement added to page 1.
May 11, 2016	ITB12-011e	Changes made throughout.
August 19, 2016	ITB12-011f	Information for 2017 QX30 vehicles added.
October 20, 2016	ITB12-011g	Information for 2017 Q50, Q60, Q70, QX60, and QX80 vehicles added.
September 28, 2017	ITB12-011h	Information for several 2018 vehicles added.
November 14, 2017	ITB12-011i	Changes made throughout.
January 4, 2018	ITB12-011j	Changes made to page 15.
March 7, 2018	ITB12-011k	Changes made throughout.
September 11, 2018	ITB12-011l	Required Actions by Model and Year table added to page 2, Check OFF Sheet added to page 21, and information reorganized throughout.
January 24, 2019	ITB12-011m	Information for several 2019 vehicles added.
June 24, 2019	ITB12-011n	Added information to pages 2, 9, 11 and 21 for 2017-2018 Q60 TCU configuration.
October 8, 2019	ITB12-011o	2020 QX60 added.
March 10, 2021	ITB12-011P	Classification number updated.
January 22, 2024	ITB12-011Q	<b>APPLIED VEHICLES</b> updated, steps 12 and 13 added, and other changes made throughout