



Service Bulletin

File in Section: -

Bulletin No.: 15-NA-051

Date: November, 2015

TECHNICAL

Subject: No Start Condition - Seat Bracket Contacting Rear Electrical Center (REC)

Brand:	Model:	Model Year:		VIN:		Engine:	Transmission:
		from	to	from	to		
Buick	Lucerne	2008	2011			All	All

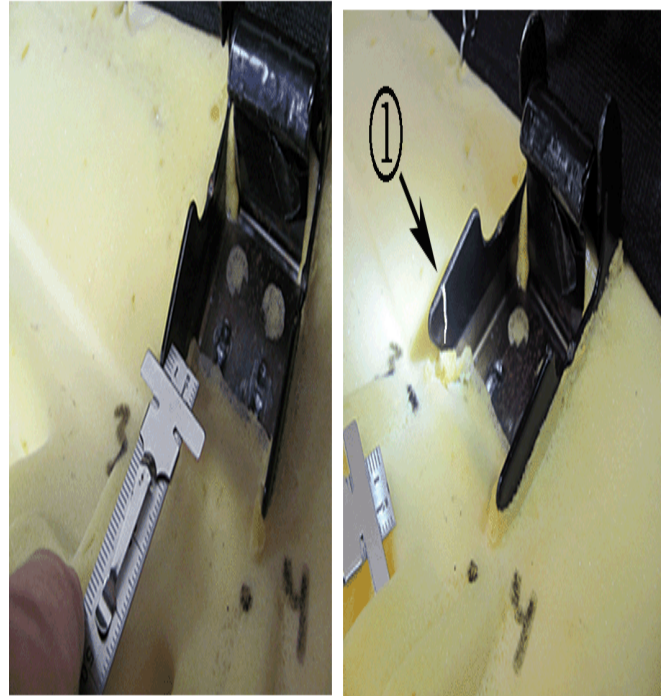
Condition	Some customers may comment on a no-start or stalling condition.
Cause	The rear seat bottom frame may come into contact with the rear electrical center (REC) cover. The contact/interface results in varying amounts of deflection of the fuel pump relay (FPR). The movement of the FPR causes potential wear of the male terminals on the FPR.

Correction

- Install a low profile fuel pump relay.
- Remove material from the rear seat bottom frame, driver side mounting brackets.

Service Procedure:

1. Open the rear door and remove the rear seat bottom cushion.
2. Disconnect the battery.
3. Remove the fuel pump relay from the rear body fuse block and discard. Refer to Relay Replacement (within an Electrical Center).
4. Install the new low profile fuel pump relay to the rear body fuse block and install the cover.
5. Connect the battery.

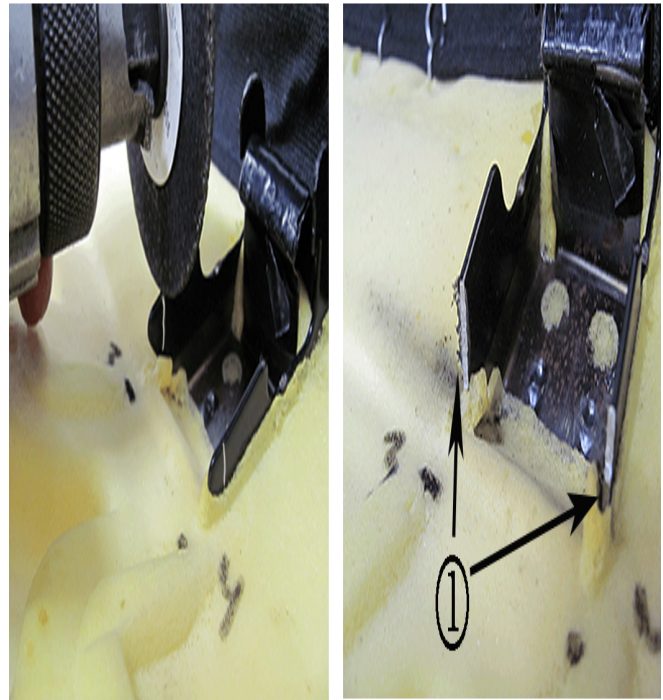


4294546



4294548

6. With the rear seat cushion on a bench, measure 5 mm (0.197 in) from each edge of the right side seat mount bracket and mark with a paint marker as shown (1).



4294550

7. Using a cut off wheel or equivalent, carefully cut each side of the bracket as shown (1).
 8. Check for any rough edges and file if necessary.
 9. Install the rear seat cushion and close door.

Parts Information

Description	Part Number
Low Profile Fuel Pump Relay	88953222

Warranty Information

Labor Operation	Description	Labor Time
5480178*	Replace Fuel Pump Relay, and Cut Rear Seat Bracket	0.4 hr
*This is a unique Labor Operation for Bulletin use only.		

Version	1
Modified	

