

## EXHAUST SYSTEM UPDATE

### AFFECTED MODELS:

**2020 1290 SUPER DUKE R**  
**2021 1290 SUPER DUKE R**  
**2022 1290 SUPER DUKE R EVO**  
**2023 1290 SUPER DUKE R EVO**

### RESTRICTIONS: AFFECTED MODELS ARE LINKED BY VIN IN KTM DEALER.NET

#### INITIAL INFORMATION:

During continuous product development, the exhaust flap control on the above-mentioned Super Duke models was improved. Performing the update prevents a possible malfunction of the exhaust flap and error messages.

On affected 2020, 2021 and 2022 Super Duke models the following updates must be performed:

- Install a new V-clamp D=70.1 (#61705058200) on the exhaust (see Fig.1). An additional anti-twist device on the improved clamp prevents possible damage to the radiator.
- Install a new header gasket 54 mm (#61705005105) on the exhaust (see Fig.1).
- Install the new repair kit (#A62405031044) for the exhaust flap control (see Fig. 2).
- Install the latest software file.
- Use action code 00 for this update.

On affected 2023 Super Duke models the following update must be performed:

- Install the latest software file.  
**Note:** Model year 2023 Super Duke's already have the new V-clamp D=70.1, header gasket 54 mm and repair kit installed therefore these parts do not need to be replaced and updated on the 2023 Super Duke models. Only the latest software file needs to be installed on 2023 Super Duke models.
- Use action code 01 for this update.

Dealers must perform the exhaust system update on all affected motorcycles in their inventory prior to any customer delivery. Please contact all of your customers who own affected motorcycles to have the exhaust system update performed as soon as possible.

**COPYRIGHT NOTICE:** The user acknowledges that all components of this technical information are KTM's and/or third parties' copyright protected property. Alteration, assignment, distribution and reproduction are forbidden.

**LIMITATION OF LIABILITY:** The information included in or available through this technical information may include inaccuracies or errors. In no event shall KTM and/or its suppliers be liable for any damages whatsoever, arising out of or in connection with the use of this technical information. Please always refer to the KTM owners and repair manuals for proper instructions or contact the KTM Dealer Services Department.

#### KTM NORTH AMERICA, INC.

30125 KTM Way // Murrieta, CA 92563  
 1119 Milan Avenue // Amherst, OH 44001  
 8701 Rue Samuel-Hatt // Chambly, QC J3L-6V4  
 www.ktm.com



Affected areas on the 2020, 2021 and 2022 Super Duke models:



Fig. 2 – Exhaust flap control  
(Heat shield removed)



Fig. 1 – V-clamp D=70.1  
with header gasket

**COPYRIGHT NOTICE:** The user acknowledges that all components of this technical information are KTM's and/or third parties' copyright protected property. Alteration, assignment, distribution and reproduction are forbidden.

**LIMITATION OF LIABILITY:** The information included in or available through this technical information may include inaccuracies or errors. In no event shall KTM and/or its suppliers be liable for any damages whatsoever, arising out of or in connection with the use of this technical information. Please always refer to the KTM owners and repair manuals for proper instructions or contact the KTM Dealer Services Department.

**KTM NORTH AMERICA, INC.**

30125 KTM Way // Murrieta, CA 92563  
1119 Milan Avenue // Amherst, OH 44001  
8701 Rue Samuel-Hatt // Chambly, QC J3L-6V4  
www.ktm.com



**PROCEDURE FOR REPAIR:**

We shall not provide a description of general workshop methods. Likewise, safety rules that apply in a workshop are not specified here. It is assumed that the repair work will be performed by a fully trained mechanic who has completed training or has a corresponding qualification. In the event of uncertainty, the most recent repair manual must be consulted.

In the interest of clarity, some components may be shown disassembled or may not be shown at all. It is not always necessary to disassemble the component to perform the activity in question. Please follow the instructions in the text.

**Update of the V-clamp D=70.1 (#61705058200):  
(For 2020, 2021 and 2022 Super Duke models only)**

1. Dismantle the rear silencer according to the repair instructions.
2. Protect the cooler against damage with cardboard, see Fig. 3.

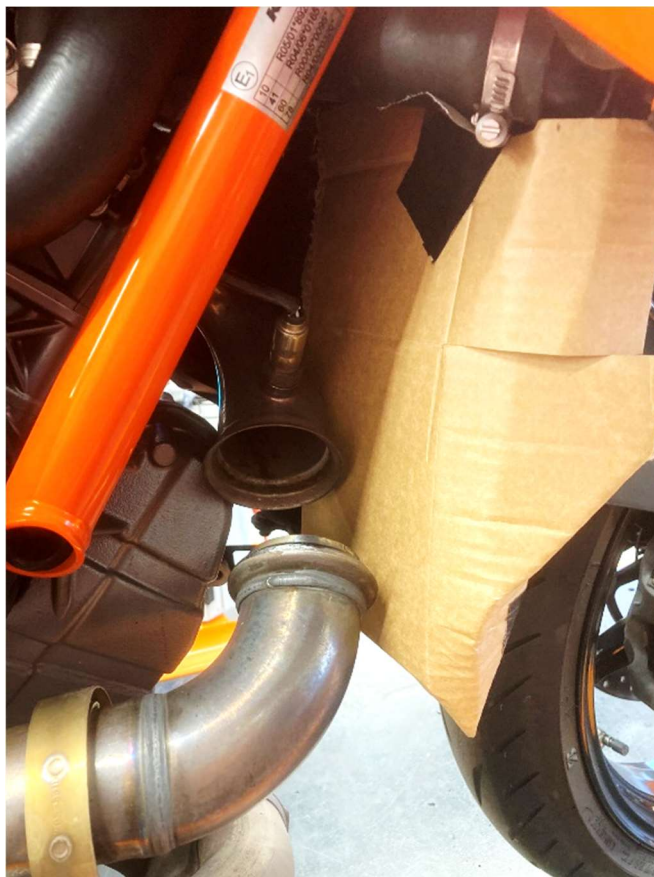


Fig. 3 – Protecting the radiator

3. Remove the front silencer according to the repair instructions.

**COPYRIGHT NOTICE:** The user acknowledges that all components of this technical information are KTM's and/or third parties' copyright protected property. Alteration, assignment, distribution and reproduction are forbidden.

**LIMITATION OF LIABILITY:** The information included in or available through this technical information may include inaccuracies or errors. In no event shall KTM and/or its suppliers be liable for any damages whatsoever, arising out of or in connection with the use of this technical information. Please always refer to the KTM owners and repair manuals for proper instructions or contact the KTM Dealer Services Department.

**KTM NORTH AMERICA, INC.**

30125 KTM Way // Murrieta, CA 92563  
 1119 Milan Avenue // Amherst, OH 44001  
 8701 Rue Samuel-Hatt // Chambly, QC J3L-6V4  
 www.ktm.com



**Note:** The lambda sensors do not have to be removed, it is sufficient to loosen the pre-silencer, lower it slightly and support it with a suitable tool (e.g., scissor jack), see Fig. 4.



Fig. 4 – Support for front silencer

4. Fit the header gasket (#61705005105).
5. Fit the V-clamp D=70.1 (#61705058200) so that the anti-rotation device does not touch the flange of the lambda sensor, see Fig. 5.

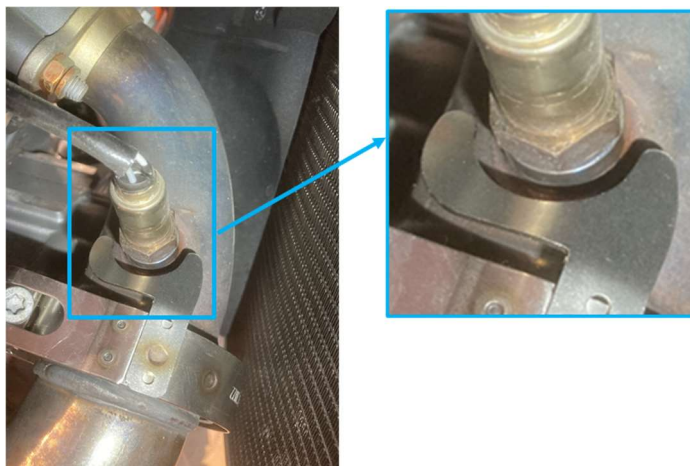


Fig. 5 – Position of V-clamp D=70.1

**COPYRIGHT NOTICE:** The user acknowledges that all components of this technical information are KTM's and/or third parties' copyright protected property. Alteration, assignment, distribution and reproduction are forbidden.

**LIMITATION OF LIABILITY:** The information included in or available through this technical information may include inaccuracies or errors. In no event shall KTM and/or its suppliers be liable for any damages whatsoever, arising out of or in connection with the use of this technical information. Please always refer to the KTM owners and repair manuals for proper instructions or contact the KTM Dealer Services Department.

**KTM NORTH AMERICA, INC.**

30125 KTM Way // Murrieta, CA 92563  
 1119 Milan Avenue // Amherst, OH 44001  
 8701 Rue Samuel-Hatt // Chambly, QC J3L-6V4  
 www.ktm.com





6. Tighten the V-clamp D=70.1 (#61705058200) to the specified torque (see Table 1).
7. Install the front silencer and rear silencer according to the repair instructions.

**Note:** Do not fit the Bowden cables yet.

**Table 1**

Component	Screw	Torque	Comment
Screw, pre-muffler exhaust clamp	M6	7 Nm	Copper paste
SK collar screw of the pre-silencer	SK - collar screw M8x35 ISA40 SS	25 Nm	Loctite® 243™
SK collar screw of the pre-silencer	SK collar screw M8x45 ISA40 SS	25 Nm	Loctite® 243™

**Fitting the exhaust flap control repair kit (#A62405031044):  
(For 2020, 2021 and 2022 Super Duke models only)**

1. Remove the exhaust flap locking plate and nut, see Fig. 6 and Fig. 7.

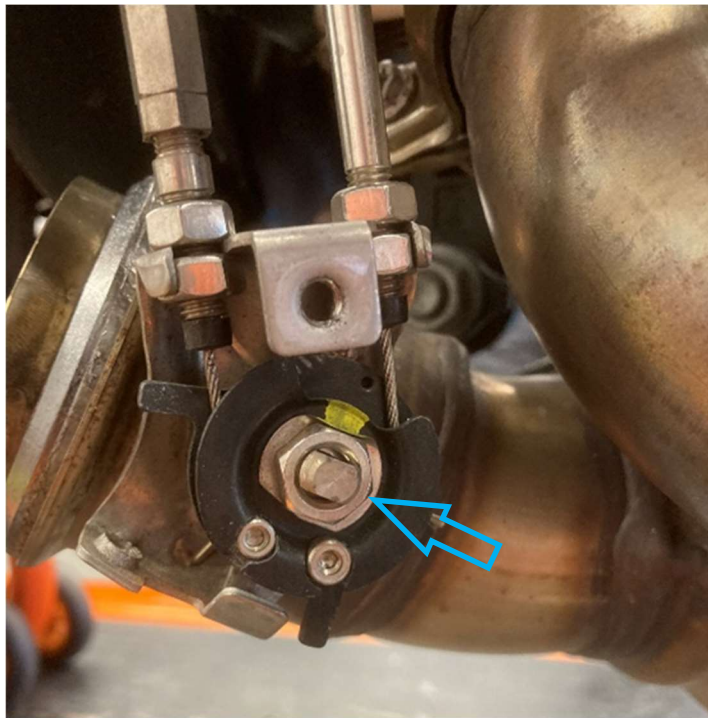


Fig.6 – Locking plate and nut

**COPYRIGHT NOTICE:** The user acknowledges that all components of this technical information are KTM's and/or third parties' copyright protected property. Alteration, assignment, distribution and reproduction are forbidden.

**LIMITATION OF LIABILITY:** The information included in or available through this technical information may include inaccuracies or errors. In no event shall KTM and/or its suppliers be liable for any damages whatsoever, arising out of or in connection with the use of this technical information. Please always refer to the KTM owners and repair manuals for proper instructions or contact the KTM Dealer Services Department.

**KTM NORTH AMERICA, INC.**

30125 KTM Way // Murrieta, CA 92563  
 1119 Milan Avenue // Amherst, OH 44001  
 8701 Rue Samuel-Hatt // Chambly, QC J3L-6V4  
 www.ktm.com



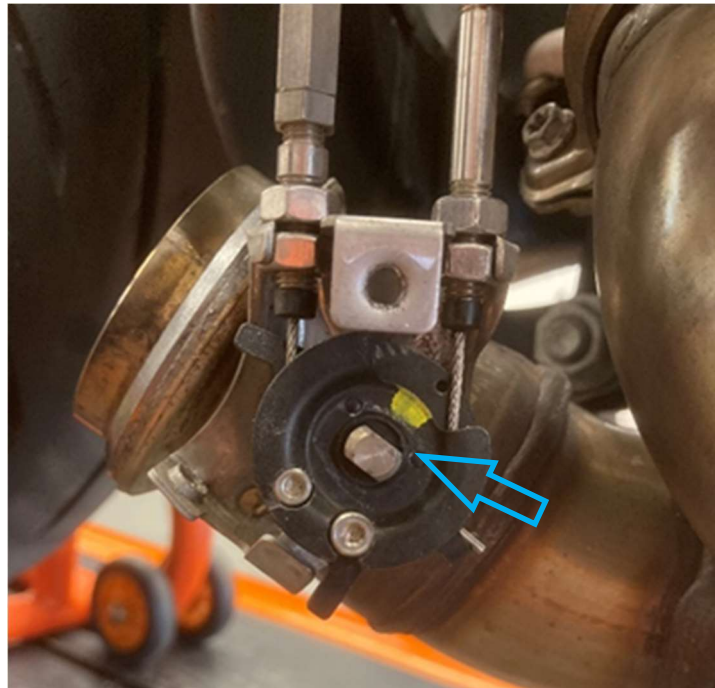


Fig.7 – Locking plate and nut removed

2. Replace the installed torsion spring of the exhaust flap control with the new torsion spring included in repair kit #A62405031044, see Fig. 8.

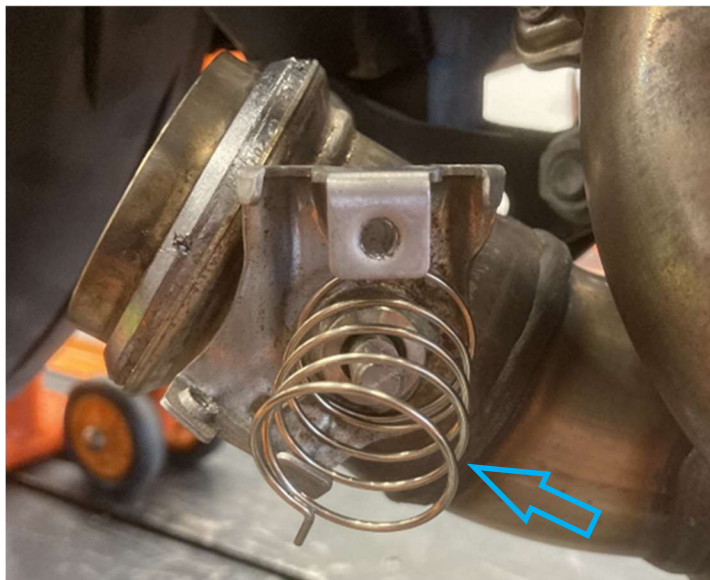


Fig.8 – Replacing the torsion spring.

**COPYRIGHT NOTICE:** The user acknowledges that all components of this technical information are KTM's and/or third parties' copyright protected property. Alteration, assignment, distribution and reproduction are forbidden.

**LIMITATION OF LIABILITY:** The information included in or available through this technical information may include inaccuracies or errors. In no event shall KTM and/or its suppliers be liable for any damages whatsoever, arising out of or in connection with the use of this technical information. Please always refer to the KTM owners and repair manuals for proper instructions or contact the KTM Dealer Services Department.

**KTM NORTH AMERICA, INC.**

30125 KTM Way // Murrieta, CA 92563  
1119 Milan Avenue // Amherst, OH 44001  
8701 Rue Samuel-Hatt // Chambly, QC J3L-6V4  
www.ktm.com



- Fit the new lock washer and tighten the nut to the specified torque (Table 2), see Fig. 9.

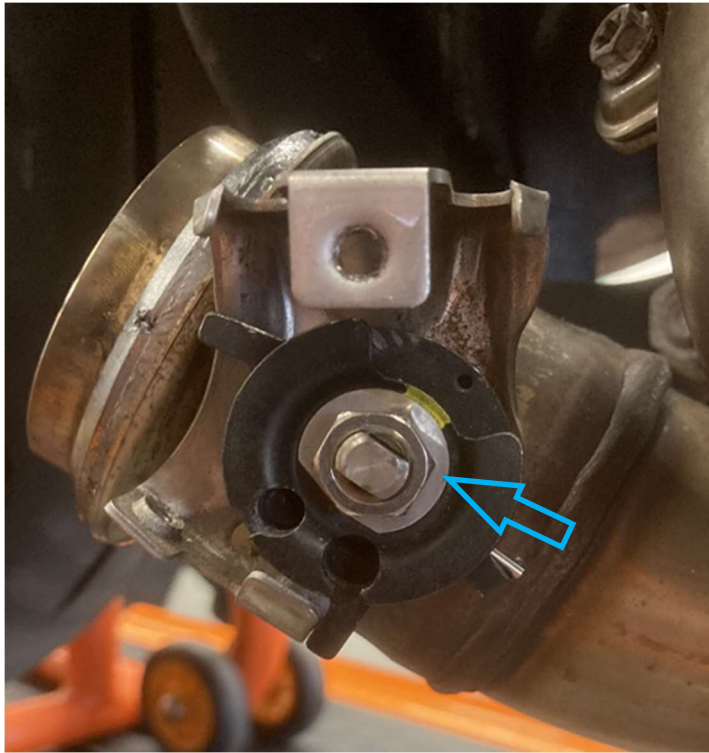


Fig.9 – Locking plate and nut refitted

- Secure the nut with a lock washer.
- Check exhaust flap for freedom of movement.
- Install the exhaust flap control Bowden cables included in repair kit #A62405031044 according to the repair instructions.
- Fit the rear silencer according to the repair instructions.
- Install the latest software file for the exhaust flap control using the XC\_2 diagnostic tool and set the Bowden cable tension of the exhaust flap control according to the repair instructions.

**COPYRIGHT NOTICE:** The user acknowledges that all components of this technical information are KTM's and/or third parties' copyright protected property. Alteration, assignment, distribution and reproduction are forbidden.

**LIMITATION OF LIABILITY:** The information included in or available through this technical information may include inaccuracies or errors. In no event shall KTM and/or its suppliers be liable for any damages whatsoever, arising out of or in connection with the use of this technical information. Please always refer to the KTM owners and repair manuals for proper instructions or contact the KTM Dealer Services Department.

**KTM NORTH AMERICA, INC.**

30125 KTM Way // Murrieta, CA 92563  
 1119 Milan Avenue // Amherst, OH 44001  
 8701 Rue Samuel-Hatt // Chambly, QC J3L-6V4  
 www.ktm.com



**NOTE:**

To adjust the cable tension, use only the adjusting screw with a width across flats of 8 mm as shown in Fig. 10.

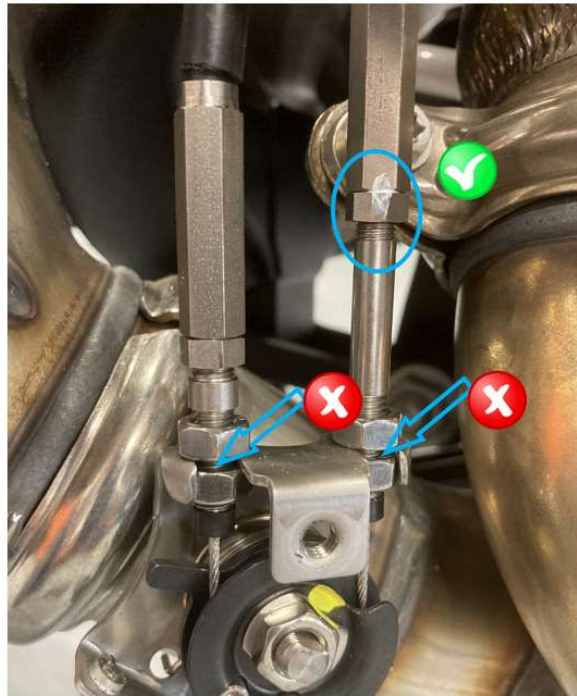


Fig.10 – Adjusting screw with wrench size 8 mm for cable tension

9. Take a photo of the final positioning of the V-clamp with anti-rotation lock and the Bowden cables and attach it to the warranty claim.
10. Install heat protection.
11. Take a test ride.
12. After the test drive, check the setting of the exhaust flap control again according to the repair instructions and readjust if necessary.

**Table 2**

Component	Screw	Torque	Comment
Cable disk nut, exhaust valve	M8	7 Nm	Lock washer
Exhaust valve actuator	SK - collar screw M6x30 ISA30	8 Nm	
Lock nut, exhaust valve throttle cable	M6	5 Nm	

**PARTS ORDERING:**

Please order the following for each affected motorcycle:

- 1 QTY. 61705058200 – V-clamp D=70.1
- 1 QTY. 61705005105 – Header gasket 54 mm
- 1 QTY. A62405031044 – Repair kit for exhaust valve

**COPYRIGHT NOTICE:** The user acknowledges that all components of this technical information are KTM's and/or third parties' copyright protected property. Alteration, assignment, distribution and reproduction are forbidden.

**LIMITATION OF LIABILITY:** The information included in or available through this technical information may include inaccuracies or errors. In no event shall KTM and/or its suppliers be liable for any damages whatsoever, arising out of or in connection with the use of this technical information. Please always refer to the KTM owners and repair manuals for proper instructions or contact the KTM Dealer Services Department.

**KTM NORTH AMERICA, INC.**

30125 KTM Way // Murrieta, CA 92563  
 1119 Milan Avenue // Amherst, OH 44001  
 8701 Rue Samuel-Hatt // Chambly, QC J3L-6V4  
 www.ktm.com





**WARRANTY INPUT INFORMATION:**

**This Technical Bulletin only affects certain VIN numbers! Please check the VIN by performing a Motorcycle History search in KTM Dealer.net to determine if it's affected. If the motorcycle is affected, you will see a link to the bulletin and its repair status in the history results. KTM North America will not warranty motorcycles whose VIN numbers are not linked as this bulletin does not apply to them. It is the responsibility of the dealer to determine if the motorcycle requires this update by checking the vehicle history and understanding the instructions provided by this bulletin.**

To submit a TI claim click the orange arrow on the right side of the corresponding technical information message to start the claim process.

You can now choose the TI Number from the list. The TI number for this procedure is according to the repairs performed and listed in the warranty claim input information; click **Continue with selected action code**. The Warranty Claim is automatically entered for you, including parts & labor. You must enter additional information in the required fields marked with an asterisk "\*" before submitting the claim to KTM. The flat rate time for this repair is based on the action performed and provided in minutes.

<b>Warranty type:</b>
TI warranty
<b>Component group:</b>
05 – Exhaust system
<b>Failure code:</b>
700 – Series improvement
<b>Failure causing part:</b>
61441070100 Exhaust flap control motor
<b>Action code, parts, labor time:</b>
<b>Improvements to the exhaust system</b>
Action code: <b>05_2166128_00</b> (For 2020, 2021 and 2022 Super Duke models only)
Labor time: <b>60 minutes</b>
Parts: <b>1 QTY. 61705058200 – V-clamp D=70.1</b>
<b>1 QTY. 61705005105 – Header gasket 54 mm</b>
<b>1 QTY. A62405031044 – Repair kit for exhaust valve</b>
Action code: <b>05_2166128_01</b> (For 2023 Super Duke models only)
Labor time: <b>15 minutes</b> (For the installation of the latest Software file)
Parts: <b>none</b>
<b>Are stock items affected:</b>
<b>Yes.</b> All #61705058100 V-clamps in your dealer stock must be returned to the spare parts warehouse and can be invoiced via RMA (return goods request).

**COPYRIGHT NOTICE:** The user acknowledges that all components of this technical information are KTM's and/or third parties' copyright protected property. Alteration, assignment, distribution and reproduction are forbidden.

**LIMITATION OF LIABILITY:** The information included in or available through this technical information may include inaccuracies or errors. In no event shall KTM and/or its suppliers be liable for any damages whatsoever, arising out of or in connection with the use of this technical information. Please always refer to the KTM owners and repair manuals for proper instructions or contact the KTM Dealer Services Department.

**KTM NORTH AMERICA, INC.**

30125 KTM Way // Murrieta, CA 92563  
 1119 Milan Avenue // Amherst, OH 44001  
 8701 Rue Samuel-Hatt // Chambly, QC J3L-6V4  
 www.ktm.com

