



57-19-02 - Remote Key Battery Replacement

Release date: 2/19/2024

## Condition

Applicable Vehicles					
Model(s)	Year	Eng. Code	Trans. Code	VIN Range From	VIN Range To
Golf, Golf GTI, Golf R, Atlas, Atlas Cross Sport, Tiguan, Jetta, Arteon, Taos	2020-2023	All	All	All	All

Revision Table			
Instance Number	Published Date	Version Number	Reason For Update
2055190/5	2/19/2024	57-19-02	Update to battery replacement labor operation number.
2055190/4	2/13/2023	57-19-02	Update to model and model year applicability.
2055190/3	3/2/2021	57-19-02	Update to model and model year applicability.
2055190/2	12/03/2019	57-19-02	Remove model year 2018, add time and mileage applicability limits, add Golf and Golf GTI, clarify VAS 6356 requirement, update 12 Volt battery maintainer tool number.
2055190/1	6/4/2019	57-19-02	Original publication.



## 57-19-02 - Remote Key Battery Replacement

Release date: 2/19/2024

 NOTICE

This technical bulletin is applicable up to 12 months in service or 12,000 miles (whichever comes first).

Customer reports one or more of the following conditions is present or has occurred:

- The remote control key buttons do not work.
- The vehicle does not start unless the key is held against the steering column.
- The vehicle cannot be unlocked/opened from the outside with the remote control buttons.
- The following message appears in the instrument cluster: "Replace key battery".
- The following message appears in the instrument cluster: "Key battery low".

One or more of the following DTCs may be stored in the **-J519-** Central Electrics Control Module (BCM) (diagnostic address 09).

- B147918 – Remote key 1 Voltage too low (static or sporadic).
- B147A18 – Remote key 2 Voltage too low (static or sporadic).
- B147B18 – Remote key 3 Voltage too low (static or sporadic).



In vehicles equipped with KESSY, a message pertaining to the key battery condition may be displayed in the instrument cluster without setting one of these DTCs.

## Technical Background

There is no specification for testing the open circuit voltage of key batteries. Open circuit voltage testing using a voltmeter will result in misdiagnosis of the actual key battery condition.

## Production Solution

Not applicable.

## Service

If diagnosis leads to the key battery as the suspected cause of the remote key concern, it is necessary to check the key battery using the applicable Guided Fault Finding (GFF) test plan.

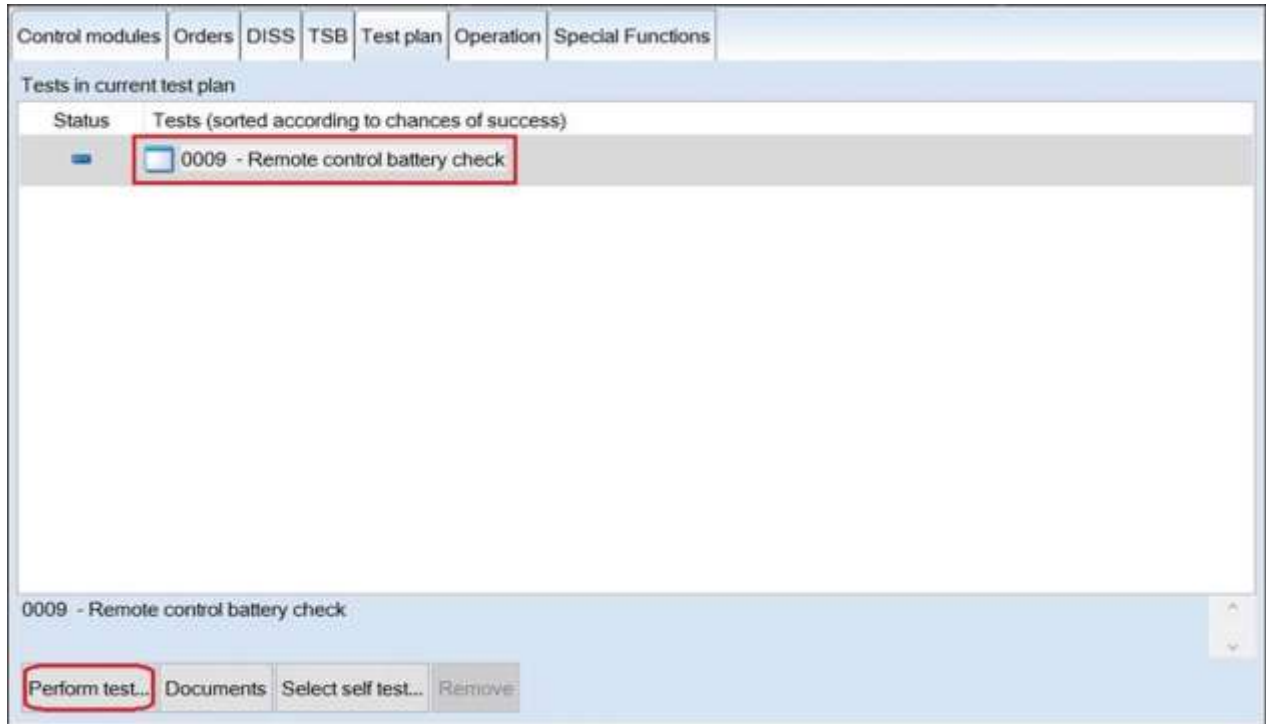
**Only replace the key battery according to the GFF test plan result.** The completed GFF Test plan must be uploaded to Volkswagen via GFF Paperless or retained by the dealer (electronically or otherwise), as it may be subject to request. **The measurements in the test plan must be performed using a VAS 6356 test instrument box connected to the ODIS tester** (results obtained from manual entry of default values into the test plan are not valid).



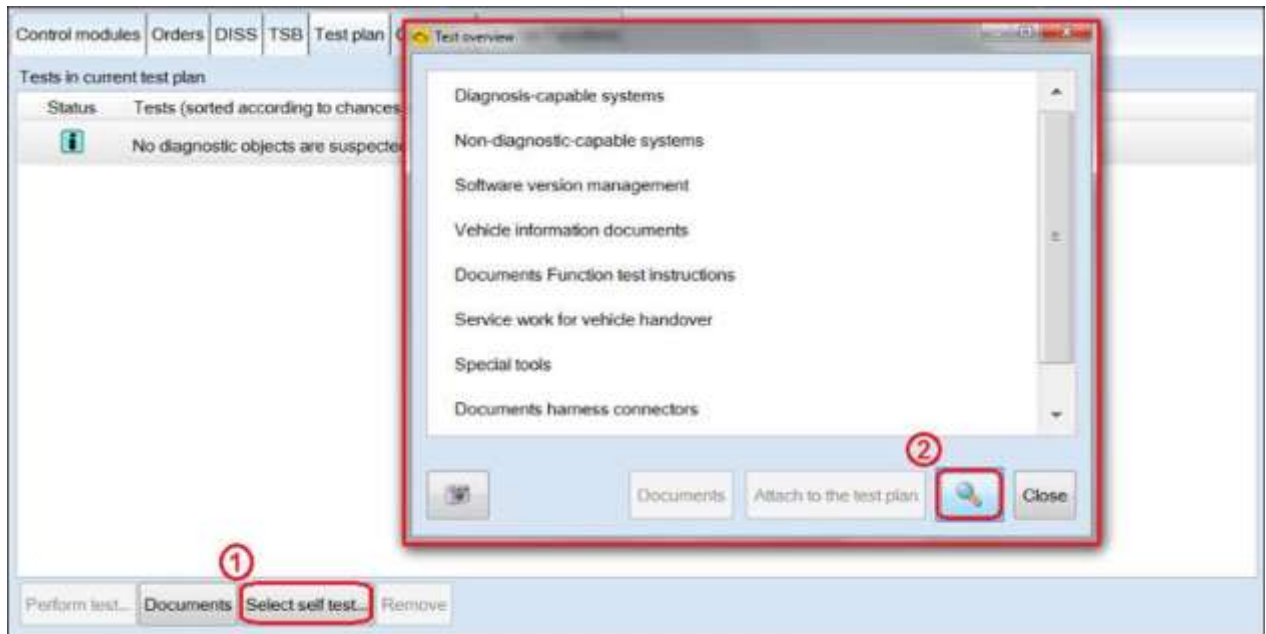
57-19-02 - Remote Key Battery Replacement

Release date: 2/19/2024

Locating the test plan:



- Key battery diagnosis is performed using the GFF test plan “**0009 – Remote control battery check**”.
- If the test plan was attached automatically based on DTCs, click “Perform test” to begin.



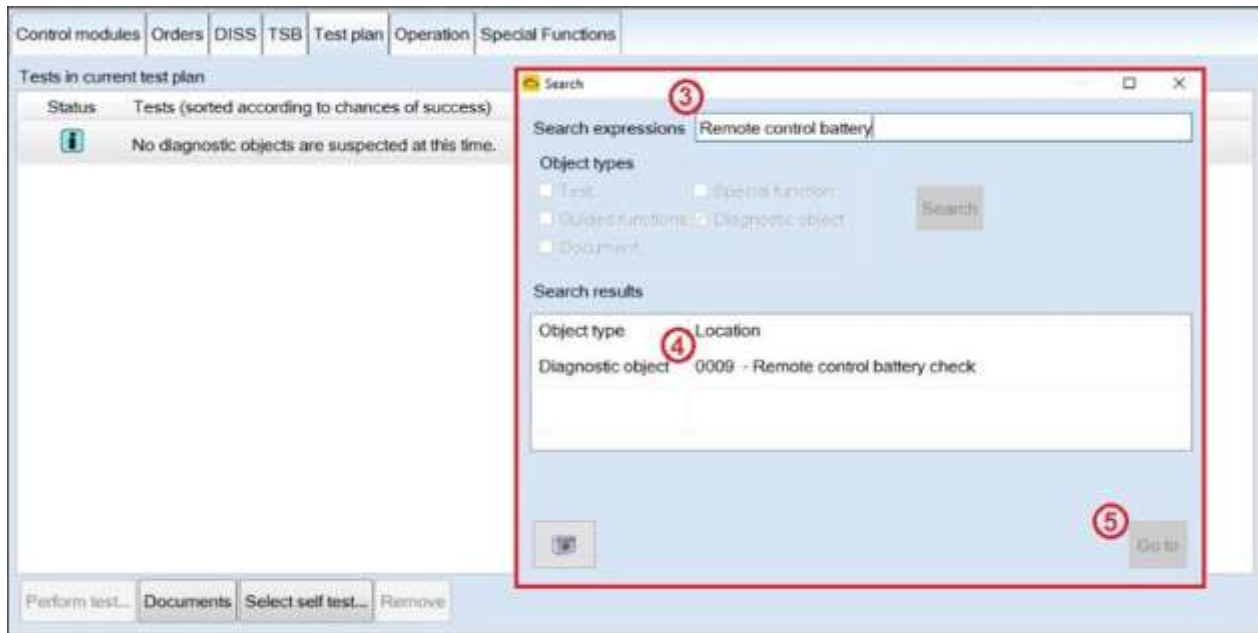


## 57-19-02 - Remote Key Battery Replacement

Release date: 2/19/2024

If the test plan was not attached automatically, it will be necessary to locate and add it manually.

- Click “Select self-test” (1).
- Click the magnifying glass icon (2).

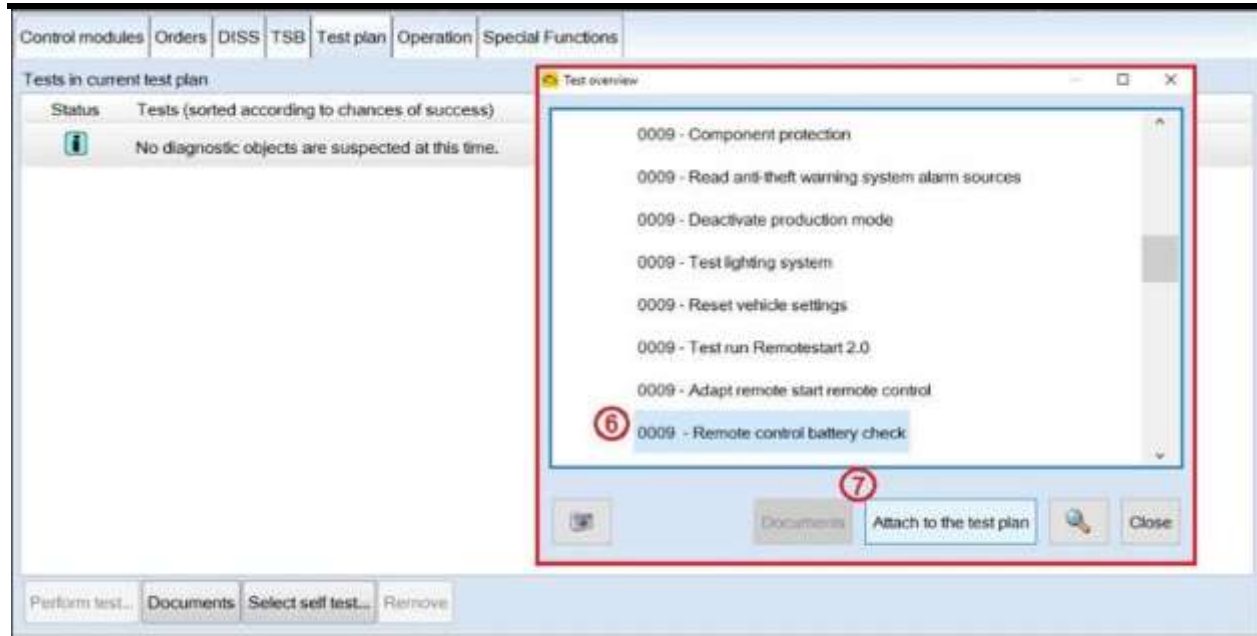


- Then enter “Remote control battery” as the search term (3).
- Select the result “0009 – Remote control battery check” (4).
- Click “Go to” (5).



## 57-19-02 - Remote Key Battery Replacement

Release date: 2/19/2024



- Select the test plan “0009 – Remote control battery check” (6).
- Click “Attach to the test plan” (7).
- Once the test plan is attached, select it, and click “Perform test”.



It is also possible to find the test plan by drilling-down through the self-test selections as follows:

Diagnosis-capable systems >0009 – Vehicle Electrical Control Module System > 0009 – Functions, Electronic central electric > 0009 – Remote control battery check.



## 57-19-02 - Remote Key Battery Replacement

Release date: 2/19/2024

---

**Overview of the test instrument setup for voltage measurement in the test plan:**

The test plan will require setting up the test instruments to provide 320 Ohms across the key battery during the voltage measurement.



During the GFF test plan, the VAS 6345 resistor decade will be used together with the VAG 1594/19A extension leads.

- The voltage measurement is performed within the test plan, using the VAS 6356 test instrument box.
- The resistance will be validated within the test plan before proceeding to measure voltage.
- The free ends of the leads are held against the positive and negative sides of the key battery during the voltage measurement.

**Overview of identifying the key remote data:**

The following data will be requested within the GFF test plan (see examples below):

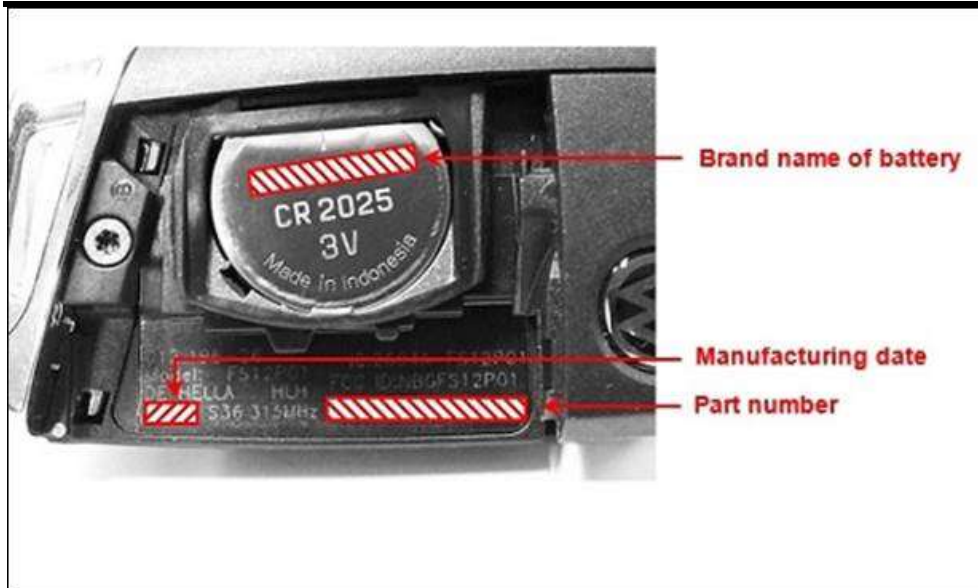
- The brand name of the battery.
- The part number of the remote control.
- The manufacturing date of the remote control in WW/YY format.





57-19-02 - Remote Key Battery Replacement

Release date: 2/19/2024



Identification of data for Hella remote key.



Identification of data for Continental remote key.



57-19-02 - Remote Key Battery Replacement

Release date: 2/19/2024

Warranty

If a key battery is replaced, a completed GFF test plan must available to support the claim.

<b>To determine if this procedure is covered under Warranty, always refer to the Warranty Policies and Procedures Manual <sup>1)</sup></b>					
Model(s)	Year(s)	Eng. Code(s)	Trans. Code(s)	VIN Range From	VIN Range To
Golf, Golf GTI, Atlas, Atlas Cross Sport, Tiguan, Jetta, Arteon, Taos	2020-2023	All	All	All	All
<b>SAGA Coding</b>					
<b>Claim Type:</b>	<b>Use applicable Claim Type <sup>1)</sup></b>				
<b>Service Number:</b>	<b>Damage Code</b>	<b>HST</b>		<b>Damage Location (Depends on Service No.)</b>	
5785	0040	--		--	
<b>Parts Manufacturer</b>	Atlas, Atlas Cross Sport, Arteon, Golf R, – battery replaced according to test plan		WWO <sup>2)</sup>		
	Tiguan, Jetta, Golf, Golf GTI, Taos – battery replaced according to test plan		3ME <sup>2)</sup>		
	ALL – Battery <u>not</u> replaced (diagnosis only, as test plan does not support replacement of key battery).		K21 <sup>2)</sup>		
<b>Labor Operation <sup>3)</sup></b> : Radio remote sender repaired (battery replaced)			57854100 = see Elsa for latest time units + GFF Time expenditure.		
<b>Labor Operation <sup>3)</sup></b> : Radio remote sender repaired (battery replaced) TAOS Only			57851900 = see Elsa for latest time units + GFF Time expenditure.		





57-19-02 - Remote Key Battery Replacement

Release date: 2/19/2024

<b>Labor Operation</b> <sup>3)</sup> : Battery <u>NOT</u> replaced (diagnosis)		Select GFF Time expenditure. (Max. 75 TU)
<b>Causal Part:</b> (type CR2032 battery)		N 10528301
<b>Causal Part:</b> (type CR2025 battery)		N 10437301
<b>Diagnostic Time</b> <sup>4)</sup>		
<b>GFF Time expenditure</b>	01500000 = Actual GFF print out (75 TU max.)	YES
<b>Road Test</b>	01210002 = 00 TU 01210004 = 00 TU	NO
<b>Technical Diagnosis</b>	01320000 = 00 TU max.	NO
<b>Claim Comment:</b> Input "As per Technical Bulletin 2055190" in comment section of Warranty Claim.		
<p><sup>1)</sup> Vehicle may be outside any Warranty in which case this Technical Bulletin is informational only</p> <p><sup>2)</sup> Code per warranty vendor code policy.</p> <p><sup>3)</sup> Labor Time Units (TUs) are subject to change with ELSA updates.</p> <p><sup>4)</sup> Documentation required per Warranty Policies and Procedures Manual.</p>		

### Required Parts and Tools

No special parts required.

Tool Description	Tool No:
Midtronics Battery Tester/Maintainer	GRX3000VAS or MTRMSP0702
VAS Diagnostic Tool	VAS 6150/X & VAS 6160/X and ODIS Service with: current online updates
Test Instrument Box	VAS 6356
Resistor Decade Box	VAS 6345 (or equivalent)
Extension Leads	VAG 1594/19A (or equivalent)



57-19-02 - Remote Key Battery Replacement

Release date: 2/19/2024

---

## Additional Information

All part and service references provided in this Technical Bulletin are subject to change and/or removal. Always check with your Parts Dept. and Repair Manuals for the latest information.