

**Chassis/VIN Numbering Systems**

Binder - PPK, Group 16-18

Replace pages 7 & 8 in PPK bulletin, Group 16, #D8, dated 12-13-2019.

Example Below: 2005 911 (997)

**Model Years 1981–2009:** Used VIN positions 7, 8 & 12 as Porsche model type designation digits. USA model years in ( ) See the following page for VIN positions.



- 911 = 911 (1981-89)
- 924 = 924/S (1981-88)
- 928 = 928 (1981-95)
- 930 = 911 Turbo (1981-89)
- 931 = 924 Turbo (1981-82)
- 944 = 944 (1985-91)
- 951 = 944 Turbo (1986-90)
- 964 = 911 (964) (1989-94)
- 968 = 968 (1992-95)
- 980 = Carrera GT (2004-06)
- 986 = Boxster (1997-04)
- 987 = Boxster (2005-09)
- 987 = Cayman (2006-09)
- 993 = 911 (993) (1995-98)
- 996 = 911 (996) (1999-05)
- 997 = 911 (997) (2005-09)
- 9PA = Cayenne (2003-09)

**As of Model Year 2010:** VIN position 7 was changed to a "A", leaving positions 8 & 12 as Porsche model type designation digits. See the following page for VIN positions.



- A81 = Boxster (981) (2013-16), Cayman (981) (2014-16)
- A82 = 718 Boxster/Cayman (982) (2017-on)
- A87 = Boxster (987) (2010-12), Cayman (987) (2010-13)
- A91 = 911 (991) (2013-19) Gen. I & Gen. II
- A92 = 911 (992) (2019-on)
- A97 = 911 (997) (2010-12)
- A70 = Panamera (2010-16) (All models including Hybrid)
- A71 = Panamera (2017-23) (All models including Hybrid)
- APA = Cayenne (2010)
- A2A = Cayenne (2011-18) (All models including Hybrid)
- AYA = Cayenne (2019-on) (All models including Hybrid & Coupe)
- A5B = Macan (2015-18) Gen. I
- A5B = Macan (2019-on) Gen. II/ III
- A18 = 918 Spyder (2015)

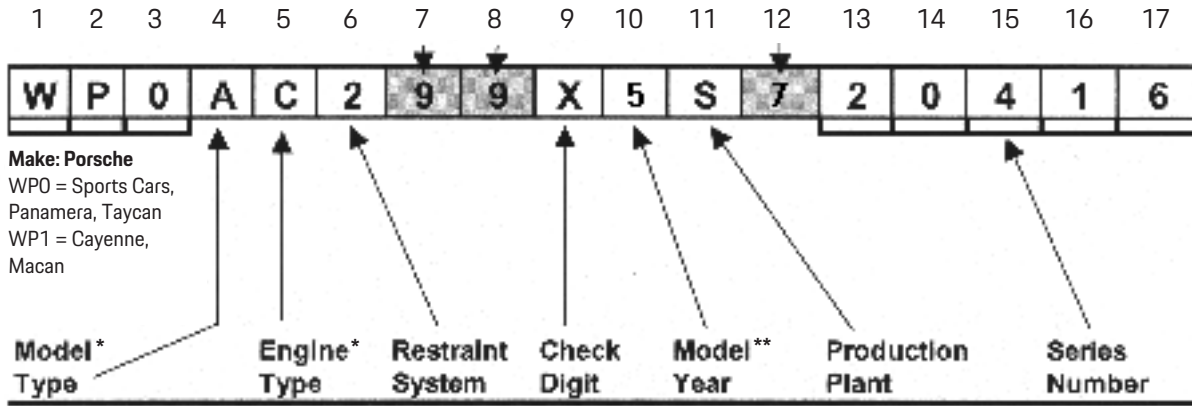
**As of Model Year 2020 (Taycan) and Model Year 2024 (Panamera):** VIN positions 7, 8 & 12 are used as Porsche model type designation digits.

See the following page for VIN positions.



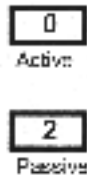
- Y1A = Taycan (2020-on)
- YAO = Panamera (2024-on)

VIN Positions



Position 4 uses alpha characters A, B, C, etc. to indicate model types, such as; Coupe, Cabriolet, Targa, SUV (Cayenne), sedan (Panamera), etc. This character can vary from year to year.

Position 5 uses alpha characters A, B, C, etc. to indicate engine types, such as; normally aspirated, turbo, Hybrid, etc. This character can vary from year to year.



Per NHTSA Code

L = 1990	A = 2010
M = 1991	B = 2011
N = 1992	C = 2012
P = 1993	D = 2013
R = 1994	E = 2014
S = 1995	F = 2015
T = 1996	G = 2016
V = 1997	H = 2017
W = 1998	J = 2018
X = 1999	K = 2019
Y = 2000	L = 2020
1 = 2001	M = 2021
2 = 2002	N = 2022
3 = 2003	P = 2023
4 = 2004	R = 2024
5 = 2005	S = 2025
6 = 2006	T = 2026
7 = 2007	V = 2027
8 = 2008	W = 2028
9 = 2009	



Footnotes:

- \* Please check the specific VIN in the Model Information, PPK Group 17, D2 series for exact vehicle specific Model Type and Engine Type.
- \*\* See PPK Bulletin Group 16 D12 for complete list.

Dr. Ing. h.c. F. Porsche AG is the owner of numerous trademarks, both registered and unregistered, including without limitation the Porsche Crest®, Porsche®, Boxster®, Carrera®, Cayenne® Cayman®, Macan®, Panamera®, Speedster®, Spyder®, Tiptronic®, VarioCam®, PCM®, PDK®, 911®, RS®, 4S®, 718®, 918 Spyder®, FOUR UNCOMPROMISED®, and the model numbers and distinctive shapes of the Porsche automobiles such as, the federally registered 911 and Boxster automobiles. The third party trademarks contained herein are the properties of their respective owners. Porsche Cars North America, Inc. believes the specifications to be correct at the time of printing. However, specifications, standard equipment and options are subject to change without notice. Some options may be unavailable when a car is built. Some vehicles may be shown with non-U.S. equipment. Please ask your authorized Porsche dealer for advice concerning the current availability of options and verify the optional equipment that you ordered. Porsche recommends seat belt usage and observance of traffic laws at all times.