

Parts Information

D661

13

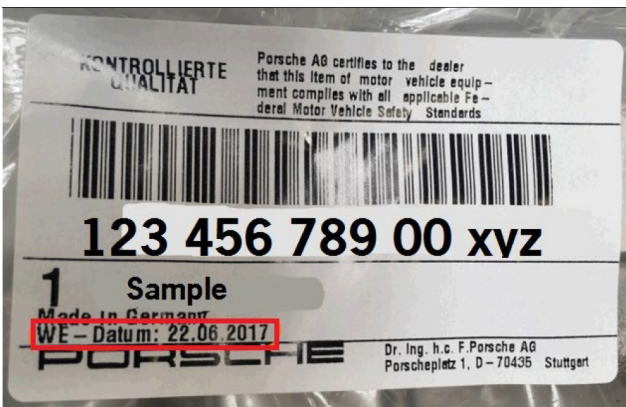
Parts Withdrawal - Pressure Difference Sender (982906052B)

Replaces all previous bulletin bearing this number.

Attention: Porsche Parts Managers/Parts Personnel

Porsche Cars North America requests return of the following part(s) to PCNA if in stock at your dealership:

Part Number	Description	Instructions
982906052B	Pressure difference sender	All parts before WE Date 14.04.2023



To avoid restocking charges and receive full credit, follow these steps:

- Please enter a return in PPL by Tuesday, February 27, 2023.
- Please use **GR13D661** as a purchase order number.
- Parts returned to PCNA without a return delivery note will be sent back to the dealer at dealer's expense.
- Return requests received after the specified return date **will not be processed** and the parts will not be accepted for return. Parts will be coded non-returnable from that date on.
- These parts must be physically returned by close of business day on **Tuesday March 5, 2024**, to your facing PDC.

Thank you for your cooperation in this matter.

Porsche Cars North America