



# Service Bulletin

Bulletin No.: 21-NA-186

Date: March, 2024

## TECHNICAL

**Subject:** Service Engine Soon Illuminated in Driver Information Center (DIC) and/or a Malfunctioning Fuel Gauge, DTC U0076/U18A2/P1001/P1434 or Other Message Counter Incorrect Codes Set

Brand:	Model:	Model Year:		VIN:		Engine:	Transmission:
		from	to	from	to		
Chevrolet	Malibu	2020	2024	—	—	1.5L (LFV)	—

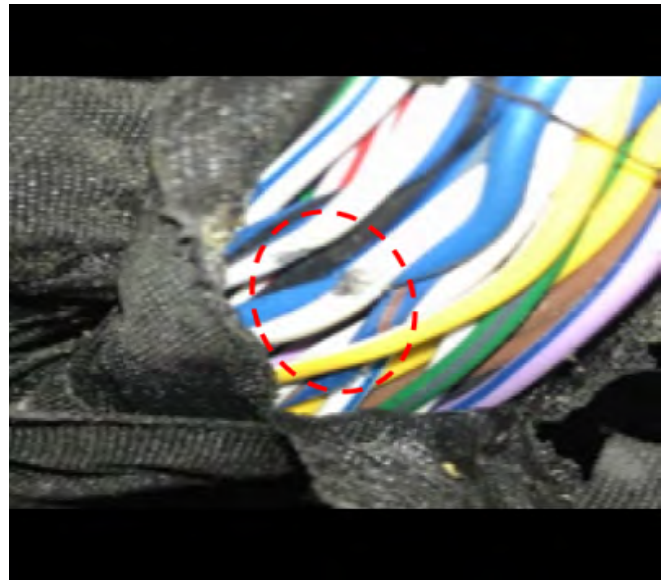
<b>Involved Region or Country</b>	North America, Israel, Palestine
<b>Condition</b>	Some customers may comment on a Service Engine Soon (SES) light and/or a malfunctioning fuel gauge. Technicians may find U0076/U18A2/P1001/P1434 or other Message Counter Incorrect codes set current or in recent history.
<b>Cause</b>	The cause of the condition may be the wire harness at the Engine Control Module (ECM) is chafing against the ECM bracket.
<b>Correction</b>	Repair the wire(s) and secure the wire harness.

**Service Procedure**



5890376

1. Locate the ECM harness (1) in the engine compartment near the battery. Refer to *Engine Control Module Replacement* in SI.



5890381

2. Inspect the ECM wire harness for any chafing. Repair any damaged wires. Refer to *Wire to Wire Repair* in SI.
3. Wrap the wire harness with anti-abrasion tape to prevent more chafing and re-secure the harness.

**Warranty Information**

For vehicles repaired under warranty, use:

Labor Operation	Description	Labor Time
5430902	Wire-to-Wire Repair	Use Published Labor Operation Time

<b>Version</b>	3
<b>Modified</b>	Released August 16, 2021 Revised August 26, 2022 – Added the 2022 Model Year. Revised February 27, 2024 – Added the 2023-2024 Model Years.

