

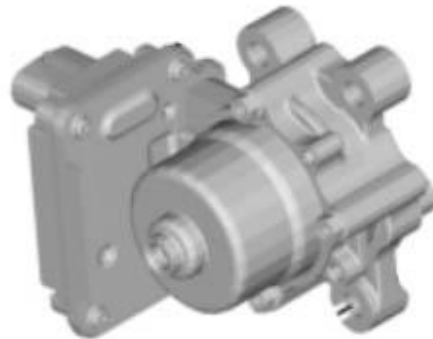


Technical Service Bulletin

GROUP	NUMBER
EV SYSTEMS	24-EV-003H
DATE	MODEL(S)
MARCH 2024	IONIQ 5 (NE1) IONIQ 6 (CE1)

SUBJECT: ELECTRIC OIL PUMP (EOP) INSPECTION

Description: Certain 2022-2024 MY IONIQ 5 (NE1) and 2023MY IONIQ 6 (CE1) may have a condition of the power down warning light (turtle symbol) with "Power is limited" displayed in the cluster, and possible DTC P0A2F. If you are servicing a vehicle with either of these conditions, follow this bulletin to inspect the EOP.



Applicable Vehicles:

- 2022-2024MY IONIQ 5 (NE1)
- 2023MY IONIQ 6 (CE1)

i Information

This TSB does not apply to Kona EV (OS EV), Ioniq Electric (AE EV), or Nexo (FE) vehicles as they are not equipped with an electric oil pump.

Parts Information:

Model	Part Name	Part Number	Figure
IONIQ 5 (NE1) IONIQ 6 (CE1)	EOP Assembly	46120-18100	

Warranty Information: Normal Warranty applies. Claim for GDS diagnosis and EOP replacement applicable to the vehicle's model in WebLTS, as necessary.

NOTE: If the EOP is out of warranty and requires replacement, submit a Prior Approval request for goodwill consideration prior to performing the work.

NOTICE

Repairs on IONIQ 5 and IONIQ 6 vehicles can only be performed by IONIQ certified dealers.

Service Procedure:

1. Inspect for DTCs.

Is DTC P0A2F00 present (current or history)?

- **YES:** Go to step 3.
- **NO:** Go to step 2.

2. Does the power down warning light (turtle symbol) come on with no DTC?
 - **YES:** Go to step 3.
 - **NO:** Refer to shop manual for further diagnosis.

3. Check the EOP operation using GDS following the steps below.

4. Start the vehicle, and select the following parameters in “MCU Sensor Data Diagnosis”:
 - Traction motor temperature
 - EOP speed command
 - EOP speed
 - EOP error data 2

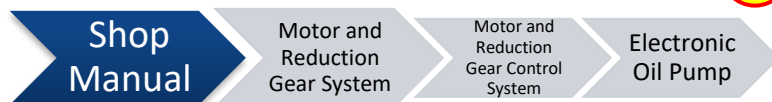
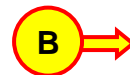
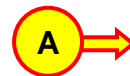
5. Drive the vehicle to warm up the traction motor.

i Information

The traction motor must be warmed up to generate an EOP speed command and perform the inspection properly.

6. Drive the vehicle with repeated rapid acceleration and deceleration. Check the EOP speed on GDS while driving.

- If EOP speed remains at 0 (A), but EOP speed command is present (B), then the EOP is not functioning properly. Replace the EOP.



- If EOP speed looks normal (above 0), then the EOP does not need replacing. Refer to shop manual for further diagnosis.

7. Service procedure is now complete.