
Vehicle drops at rear axle, display mes-
sage: "AIRmatic - Service Required"

Topic number	LI32.22-P-048597
Version	4
Design group	32.22 Air suspension
Date	08-19-2011
Validity	Model 212.0## with air suspension (SA code 489) Model 212.2##
Reason for change	Dust boot cut, added
Reason for block	

Complaint:

The vehicle drops at the rear axle after standing for a long time.

Attachments	
File	Designation
1.JPG	Figure 1

Cause:

1. Damaged sealing rings in the air suspension element on the rear axle can lead to a microscopic leak and thus to a gradual loss of air.
2. Air suspension element on the rear axle installed twisted (see Figure 1), leading to extreme load on the connection piece of the air pressure line and leakage at the thread.

Remedy:

1. Perform all the leak tests for the AIRmatic using DAS and follow the instructions exactly.
2. Perform compressor test using DAS.

Note: If the compressor passes the test, it must not be replaced!

3. Check installation position of air suspension element. The connection piece of the pressure line must not make contact with the centering socket (see Figure 1). If necessary, realign the air suspension element so that the connection piece of the air pressure line is located in the cutout.
4. If the above tests produce no findings, proceed as follows:

Measure vehicle level at the rear axle on left and right from the wheel center to the fender. Leave the vehicle standing overnight and next day check the vehicle level at both wheels. If the vehicle level has dropped by more than 20 mm, the corresponding air suspension element must be replaced. If the vehicle level on both sides has dropped by more than 20 mm, both air suspension elements on the rear axle must be replaced.

Note:

If the air suspension bellows being installed has a rubber lip on the bottom end of the dust boot (currently delivered like this via the replacement parts system and expected to continue until mid-September), this rubber lip must be cut off all the way around before installation (see picture 2).

Attachments	
File	Designation
2.JPG	Figure 2

Symptoms
Suspension System Function / Chassis/suspension / Vehicle level too low / Suspension/Dampening /
Suspension System Function / Chassis/suspension / Level does not react / Suspension/Dampening /
Suspension System Function / Chassis/suspension / Indicator lamp is on / Suspension/Dampening /
Chassis/suspension / Lopsided/crooked / Suspension characteristic /
AIRMATIC / Chassis/suspension / AIRMATIC leaks / Suspension/Dampening / Air leakage /
Air Suspension- Stop, Vehicle Too Low / AIRMATIC / Chassis/suspension / Suspension/Dampening / AIRMATIC display /
Air Suspension - Service Required / AIRMATIC / Chassis/suspension / Suspension/Dampening / AIRMATIC display /
AIRMATIC / Chassis/suspension / AIRMATIC function / Vehicle is lopsided / Suspension/Dampening /
AIRMATIC / Chassis/suspension / AIRMATIC function / Vehicle is too low / Suspension/Dampening /
AIRMATIC / Chassis/suspension / AIRMATIC function / Vehicle lowers while driving / Suspension/Dampening /

Parts							
Part number	ES1	ES2	Designation	Quantity	Note	EPC	Non-EPC
A2123202125			Left rear air spring	1	As required for station wagon	X	
A2123202025			Right rear air spring	1	As required for station wagon	X	
A2123200325			Left rear air spring	1	As required for sedan	X	
A2123200625			Right rear air spring	1	As required for sedan	X	

Validity		
Vehicle	Engine	Transmission
212.002	*	*
212.003	*	*
212.005	*	*
212.020	*	*
212.023	*	*
212.024	*	*
212.025	*	*
212.041	*	*
212.047	*	*
212.048	*	*

XENTRY

212.052	*	*
212.053	*	*
212.054	*	*
212.055	*	*
212.056	*	*
212.057	*	*
212.059	*	*
212.072	*	*
212.073	*	*
212.074	*	*
212.077	*	*
212.080	*	*
212.082	*	*
212.087	*	*
212.088	*	*
212.089	*	*
212.090	*	*
212.091	*	*
212.093	*	*
212.202	*	*
212.203	*	*
212.205	*	*
212.220	*	*
212.223	*	*
212.224	*	*
212.225	*	*
212.247	*	*
212.248	*	*
212.254	*	*
212.255	*	*
212.256	*	*
212.257	*	*
212.259	*	*
212.272	*	*
212.273	*	*
212.274	*	*
212.277	*	*
212.280	*	*
212.282	*	*
212.287	*	*
212.288	*	*
212.289	*	*
212.291	*	*

XENTRY

212.293	*	*
---------	---	---

Full model designation breakdown		
Vehicle	Engine	Transmission
212.002	651.910	711.653
212.002	651.910	716.656
212.002	651.910	722.646
212.002	651.910	722.908
212.002	651.924	711.653
212.002	651.924	716.656
212.002	651.924	722.646
212.002	651.924	722.908
212.003	651.924	711.670
212.003	651.924	722.646
212.003	651.924	722.908
212.005	651.925	711.653
212.005	651.925	716.656
212.005	651.925	722.694
212.005	651.925	722.996
212.020	642.850	711.670
212.020	642.850	722.902
212.023	642.852	711.670
212.023	642.852	722.903
212.024	642.850	711.670
212.024	642.850	722.902
212.025	642.850	711.670
212.025	642.850	722.902
212.025	642.856	711.670
212.025	642.856	722.902
212.041	271.958	722.695
212.047	271.860	722.618
212.047	271.860	722.997
212.048	271.820	711.655
212.048	271.820	716.607
212.048	271.820	716.612
212.048	271.820	722.696
212.048	271.820	722.997
212.048	271.860	711.655
212.048	271.860	716.607
212.048	271.860	716.612
212.048	271.860	722.696
212.048	271.860	722.997

XENTRY

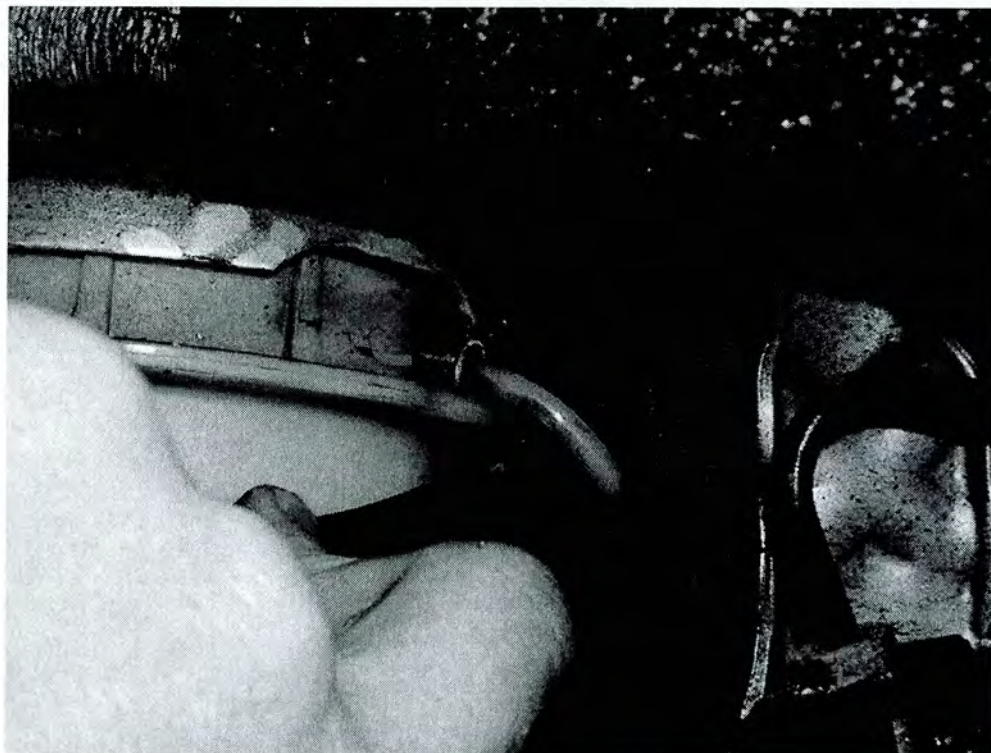
212.052	272.923	716.636
212.052	272.923	722.998
212.053	272.980	722.906
212.054	272.947	711.654
212.054	272.947	716.671
212.054	272.947	722.999
212.054	272.952	711.654
212.054	272.952	716.671
212.054	272.952	722.999
212.055	276.952	722.906
212.056	272.961	722.906
212.056	272.980	722.906
212.057	272.983	722.906
212.059	276.952	722.906
212.072	273.971	722.904
212.073	278.922	722.909
212.074	157.981	722.931
212.077	156.985	722.930
212.080	276.952	722.960
212.082	651.924	722.965
212.087	272.977	722.960
212.088	276.952	722.960
212.089	642.856	722.962
212.090	273.970	722.961
212.091	278.922	722.967
212.093	642.858	722.966
212.202	651.924	711.653
212.202	651.924	716.656
212.202	651.924	722.646
212.202	651.924	722.908
212.203	651.924	711.670
212.203	651.924	722.646
212.203	651.924	722.908
212.205	651.925	711.653
212.205	651.925	716.656
212.205	651.925	722.694
212.205	651.925	722.996
212.220	642.850	711.670
212.220	642.850	722.902
212.223	642.852	711.670
212.223	642.852	722.903
212.224	642.850	711.670
212.224	642.850	722.902

XENTRY

212.225	642.850	711.670
212.225	642.850	722.902
212.247	271.860	722.618
212.247	271.860	722.997
212.248	271.860	711.655
212.248	271.860	716.607
212.248	271.860	716.612
212.248	271.860	722.696
212.248	271.860	722.997
212.254	272.952	711.654
212.254	272.952	716.671
212.254	272.952	722.999
212.255	276.952	722.906
212.256	272.980	722.906
212.257	272.983	722.906
212.259	276.952	722.906
212.272	273.971	722.904
212.273	278.922	722.909
212.274	157.981	722.931
212.277	156.985	722.930
212.280	276.952	722.960
212.282	651.924	722.965
212.287	272.977	722.960
212.288	276.952	722.960
212.289	642.856	722.962
212.291	278.922	722.967
212.293	642.858	722.966

Attachments

1.JPG:



2.JPG:

