



Service Bulletin

File in Section: -

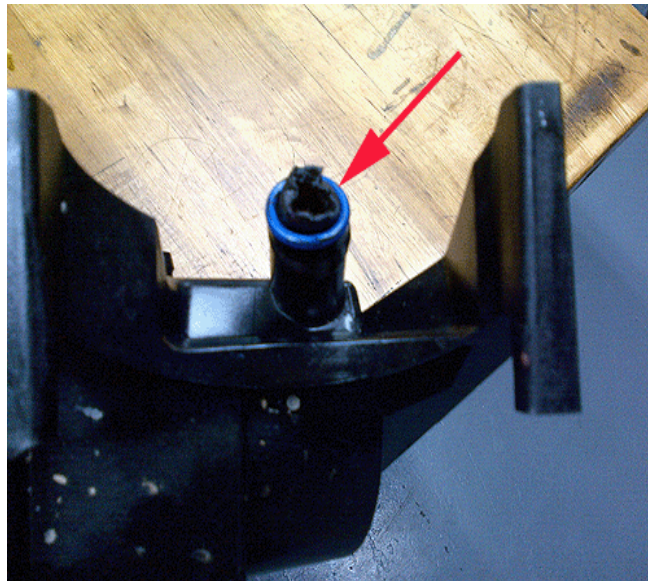
Bulletin No.: PI0671

Date: February, 2012

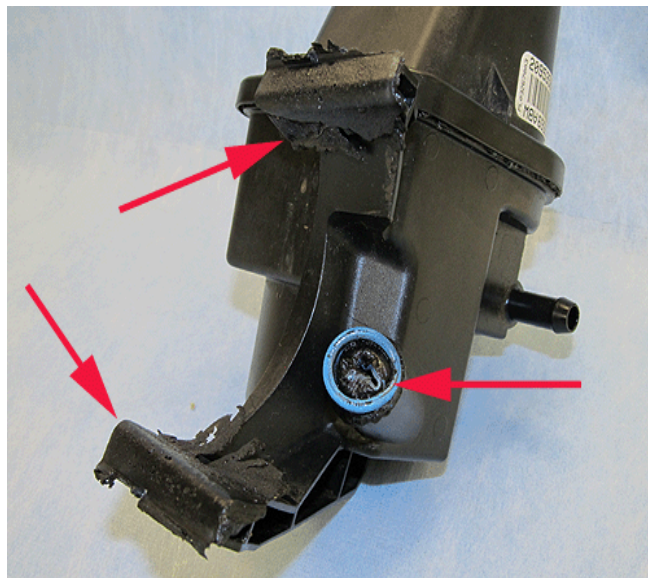
PRELIMINARY INFORMATION

Subject: Power Steering Fluid Leak at Fluid Reservoir or Reservoir Connection

Models: 2012 and Prior GM Passenger Cars and Light Duty Trucks
Condition/Concern



2759939



2767774

When diagnosing power steering fluid leak conditions, the technician may find a heat damaged fluid reservoir. When a power steering reservoir or reservoir seal is damaged, it's important to make sure that potential associated issues are addressed. Conditions that are the result of super heated power steering fluid may involve multiple components. These additional components may not have any apparent issues at the time of the initial diagnosis.

Fluid temperatures sufficient to distort or damage the reservoir may cause damage to the power steering pump affecting durability.

Recommendation/Instructions

When replacing a power steering reservoir for a leak condition, if the condition appears to be caused by super heated fluid, it's important that the power steering pump also be replaced to prevent a subsequent concern, resulting in customer dissatisfaction. In addition, it's necessary to advise the customer that certain operating conditions generate these excessive fluid temperatures and they must be avoided to prevent future issues.

These maneuvers and conditions include:

- Holding the steering against the "stop" or end of travel for more than 5 seconds at an engine speed in excess of 1,500 rpm.
- Doing continuous spin-outs, "cookies" or "doughnuts" with the steering against the end of travel or close to the end of travel for more than 5 seconds at a time at an engine speed in excess of 1,500 rpm.