

# UPDATE Technical Bulletin



17 12 01 March 09, 2012 2028830

## UPDATE – 17D2 Positive Crankcase Ventilation Valve

**NOTE:**

- Perform this UPDATE on all applicable vehicles within Positive Crankcase Ventilation Warranty Ext (10 years or 120,000 miles (192,000 km), whichever occurs first).
- It is MANDATORY to perform UPDATES on all applicable vehicles in dealer inventory PRIOR TO RETAIL SALE.
- Inform customers that this UPDATE will be available free of charge as long as their vehicle is within the Warranty parameters outlined in this UPDATE.

**NOTE:**

**Required DMS Wording/Programming Text (SAGA claim comments):** UPDATE 17D2 Positive Crankcase Ventilation

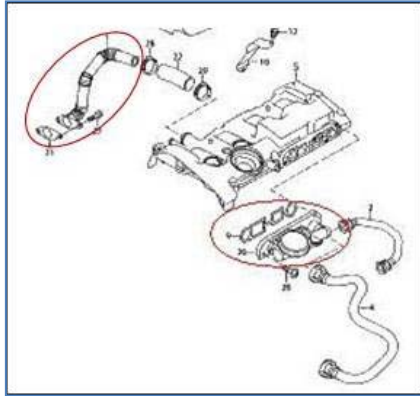
Model(s)	Year	Engine Code	Trans. Code	From	To
Jetta	2006 - 2008	2.0L (BPY)	All	3VW__ _1K_6M600925	3VW__ _1K_8M199152
Eos	2006 - 2008	2.0L (BPY)	All	WVW__ _1F_6V000336	WVW__ _1F_8V057164
GTI	2006 - 2008	2.0L (BPY)	All	WVW__ _1K_6W017326	WVW__ _1K_8W345764
Passat	2006 - 2008	2.0L (BPY)	All	WVW__ _3C_6_002717	WVW__ _3C_8_193384

**REVISION HISTORY**

Revision	Date	Purpose
1	03/06/2012	Original publication
2	03/09/2012	Updated Note section, added clamp to part list



## Technical Background



The conditions described may be caused by a malfunction of the crankcase ventilation pressure regulating valve or turbo intake pipe resulting in excessive vacuum or excessive pressure being applied to the engine crankcase.



The guide pin of the check valve in the intake manifold side of the valve may break, preventing the check valve from correctly sealing when boost pressure is present in the intake manifold. Intake boost pressure may thus be applied to the engine crankcase, resulting in possible oil leaks.

A whistling noise or air rushing sound may be the consequence of an excessive amount of vacuum being applied to the engine crankcase. This condition can be detected by verifying whether the oil filler cap is being firmly held in position to the engine even after it has been unlocked.

(Depending on part number, the check valve may be installed horizontally inside the housing.)

## Production Solution

Improved crankcase ventilation pressure regulating valve and turbo intake pipe.



## Service

### NOTE:

- *ElsaWeb is the only valid inquiry/verification source. Check ElsaWeb on the day this vehicle UPDATE will be performed to verify vehicle eligibility for the UPDATE. Status must show “open”. Attach an ElsaWeb printout showing the “open” status to the repair order.*
- *If this UPDATE appears to have already been performed but the code still shows open in ElsaWeb, contact Warranty before proceeding further. Another dealer may have recently performed this UPDATE but not yet entered a claim for it in the system.*
- *ElsaWeb may also show additional open action(s); if so, inform your customer - this work can be done while the vehicle is in for this UPDATE.*
- *Contact the Warranty Helpline (U.S.) or the Warranty Campaign Specialist (Canada) if you have any questions.*

Inspect the Crankcase Pressure Control Valve and Turbo Inlet Pipe to verify the latest level parts are installed.

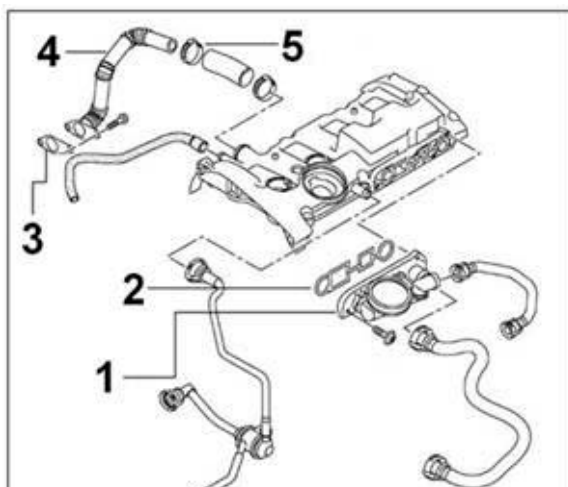


Figure 1: Pressure Control Valve (1). Gasket (2), Pipe gasket (3),

Remove Pressure Control Valve (Figure 1, 1) and check part number.

If the part number of the pressure control valve is **06F 129 101 P** no further steps are required.

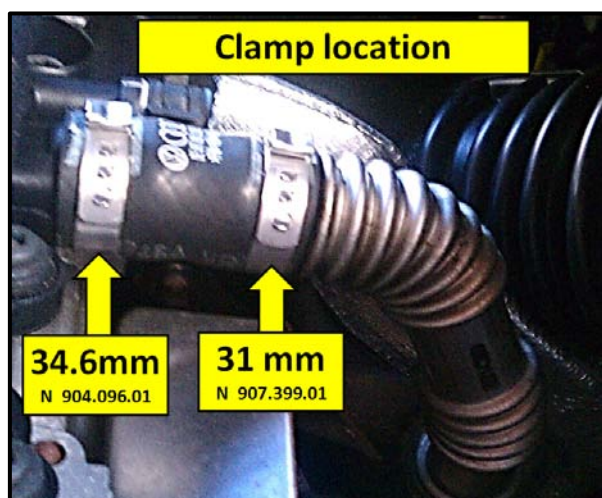
If the part number of the Pressure Control Valve is **any other suffix prior to “P”**, replace Pressure Control Valve





Inspect intake turbo pipe. If the intake turbo pipe is not part number 06F 103 215B replace.

### Old style valve and pipe installed:

- Install improved pressure regulating valve and turbo pipe.



 Tip: Picture <left> shows correct location of clamps.

 Tip: To install 31mm clamp, first insert clamp onto turbo pipe, then insert turbo pipe into rubber hose, then slide clamp over rubber hose.



## Required Parts and Tools

Part Description	Part No:	Quantity
Crankcase ventilation pressure regulating valve	06F 129 101 P	1
Gasket	06F 103 483 E	1
Clamp (31mm)	N 907 399 01	1
Clamp (34.6mm)	N 904 096 01	1
Turbo inlet pipe	06F 103 215 B	1
Pipe gasket	06F 145 757 F	1

Tool Description	Tool No:
Midtronics Battery Tester/Charger	InCharge 940 (INC 940)
VAS Diagnostic Tool	VAS 5051B, 5052A, 6150(A) (Base CD V19.00 and Brand DVD V19.11.00 or higher)

## Warranty

<b>Claim Entry Procedure</b>	Enter your claim immediately upon completion of the UPDATE. Claims will only be paid for vehicles that show this UPDATE code open in ElsaWeb on the day of repair. To help ensure prompt and proper payment, attach the screen print to the repair order.
<b>Claim Help</b>	<b>U.S. dealers</b> - Contact the <b>Warranty Helpline</b> toll-free at 1-866-306-8447 for help with claim entry. <b>Canadian dealers</b> - Contact your Warranty Campaign Specialist. For contact information, please proceed to "ServiceNet – Warranty/Contact Information/Campaigns – "Warranty Campaign Specialist."
<b>Required Customer Notification</b>	Ensure customers are aware of all work performed on the vehicle by recording the information on the repair order. Attach a copy of the <i>Vehicle UPDATE Fact Sheet</i> to the customer's copy of the repair order and take the time to explain this UPDATE to your customer.

# UPDATE Technical Bulletin



## SAGA Code 17D2 Claim Entry Procedure

Check ElsaWeb to confirm that this UPDATE code is open on the day of repair.

Service No.: 17D2

Damage Code: 0099

Parts Manufacturer/Vendor Code: WWO

### Claim Type

Sold vehicle = 7 10

Unsold vehicle = 7 90

### Accounting Instructions

#### Criteria I.D. 01

**Scenario #1 - Check/UPDATE present; updated pressure regulating valve and turbo inlet pipe installed. No further work required.**

Repair operation: 0183 00 99 40 TU

-- OR --

**Scenario #2 - Remove and install crankcase pressure regulating valve; pressure regulating valve required; updated turbo inlet pipe already installed**

Repair operation: 1726 19 99 40 TU

<u>Quantity</u>	<u>Part Number</u>	<u>Part Description</u>
1	06F 129 101 P	Crankcase ventilation pressure regulating valve
1	06F 103 483 E	Gasket

-- OR --

**Scenario #3 - Remove and install crankcase pressure regulating valve and turbo inlet pipe; pressure regulating valve and turbo inlet pipe required.**

Repair operation: 1726 20 99 60 TU

<u>Quantity</u>	<u>Part Number</u>	<u>Part Description</u>
1	06F 129 101 P	Crankcase ventilation pressure regulating valve
1	06F 103 483 E	Gasket
1	N 907 399 01	Clamp (31mm)
1	N 904 096 01	Clamp (34.6mm)
1	06F 103 215 B	Turbo inlet pipe
1	06F 145 757 F	Pipe gasket

***There is NO reimbursement for wash or loaner vehicle!***



---

**If vehicle is not eligible for repair under this UPDATE (i.e.: totaled status) OR if customer refused repairs.**

Fax the Repair Order to VWoA at (248) 754-5093 and provide VIN, applicable Service Number, Customer Information, Dealer Number and Date

## Additional Information

All part and service references provided in this Technical Bulletin are subject to change and/or removal. Always check with your Parts Dept. and Repair Manuals for the latest information.

# UPDATE Technical Bulletin



---

## UPDATE FACT SHEET – UPDATE Code 17D2

Dear Volkswagen Customer,

Today we performed UPDATE code 17D2 on your vehicle. This UPDATE replaced the pressure regulating valve and if required the turbo intake pipe, and was performed for you free of charge.

Volkswagen periodically makes updates like this available in order to ensure our customer's continued satisfaction with the quality of their Volkswagen vehicles.

We at Volkswagen are committed to providing our customers with reliable, quality products that are a pleasure to drive and own. If you should ever have any questions or vehicle concerns, your authorized Volkswagen dealer will be pleased to assist you.

Thank you for driving a Volkswagen!