 HYUNDAI NEW THINKING. NEW POSSIBILITIES. Technical Service Bulletin	GROUP CAMPAIGN	NUMBER 12-01-012
	DATE APRIL 2012	MODEL(S) AZERA (HG)
SUBJECT AZERA (HG) ELECTRIC POWER STEERING (EPS) SOFTWARE UPDATE (SERVICE CAMPAIGN TK7)		

★ IMPORTANT

***** Dealer Stock and Retail Vehicles *****

Dealers must perform this Service Campaign on all affected vehicles prior to customer retail delivery and whenever an affected vehicle is in the shop for any maintenance or repair.

When a vehicle arrives at the Service Department, access Hyundai Motor America's "Warranty Vehicle Information" screen via WEBDCS to identify open Campaigns.

Description: The following procedure describes how to update the Electric Power Steering (EPS) software for some 2012MY Azera (HG) vehicles.



★ NOTE

- Service procedure below describes both AUTO and MANUAL modes.
- AUTO mode will check the system ROM ID. If the update has already been completed, a message will be displayed and no further repair is necessary. See ROM ID table below.
- Only perform MANUAL mode if AUTO mode fails.

Applicable Vehicles:

- **Azeras (HG) produced from SOP through 4/2/12**

Warranty Information:

Model	Op Code	Operation	Op Time
HG	20C024R0	EPS ECU Upgrade	0.3 M/H

*** NOTE**

Submit claim on Campaign Claim Entry Screen.

ROM ID Information Table:

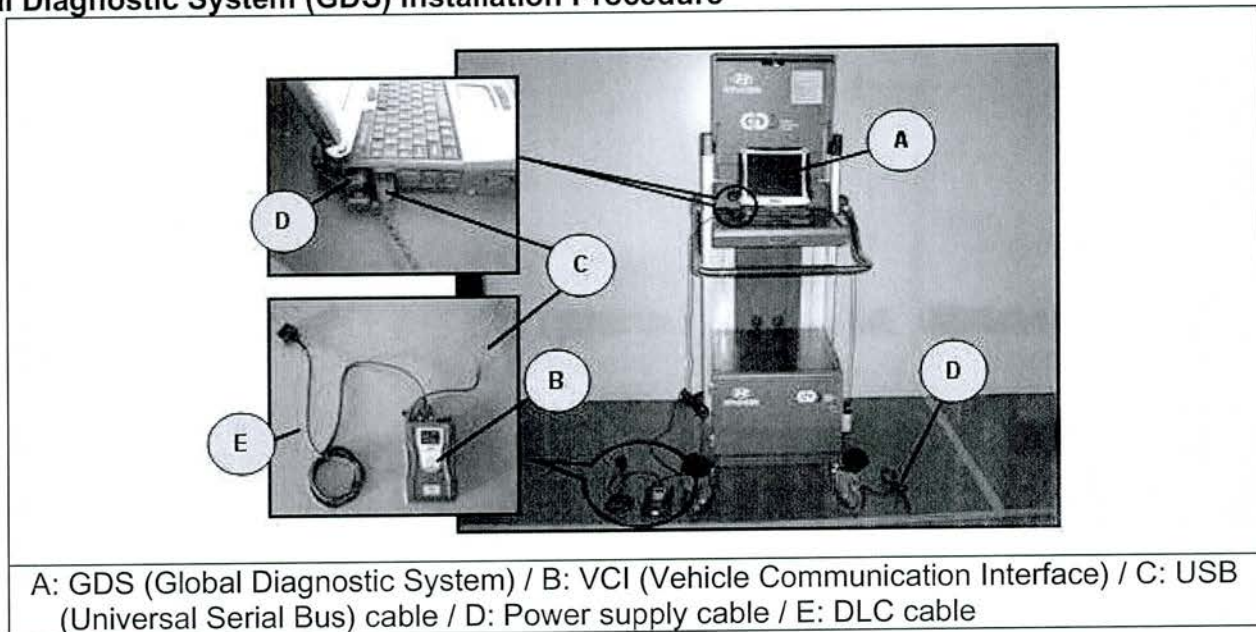
Model	STR'G Column & U-joint ASS'Y	ROM ID	
		Previous	New
AZERA (HG)	56310-3V760 56310-3V850	4HGG1109 4HGH1112	4HGJ1203

SERVICE PROCEDURE:

*** CAUTIONS USING GDS**

1. Make sure the vehicle's battery has reasonable charge. If the vehicle has been in storage for several days, run the engine to ensure an adequate battery charge state for reliable update results.
2. Turn off all lamps (Do not leave head lamp switch in auto mode) and all accessories (including heater, A/C, blower, radio, seat warmer, defroster, etc.) to prevent battery discharge during the update.
3. Perform update with the ignition switch in the ON position.
4. Be careful not to disconnect any cables connected to the vehicle or scan tool during the update.
5. Do not start the engine during update.
6. Do not turn off the ignition switch during update.

Global Diagnostic System (GDS) Installation Procedure



1. Connect the power supply cable to the GDS.

*** NOTE**

If attempting to perform the update with the power supply cable disconnected from the GDS, make certain the GDS is sufficiently charged for the update. If not, the update may fail in progress. Therefore, it is strongly recommended to connect the power supply cable to the diagnostic terminal during the update procedure.

2. Connect the USB cable between the VCI and the GDS.

*** NOTE**

When performing the update using the GDS, wireless communication between the VCI and the GDS is NOT available. Therefore, be sure to connect the USB cable between the VCI and the GDS.

3. Connect the 16-pin DLC cable from the VCI into the vehicle's 16-pin connector under the driver side instrument panel.

4. Turn on the VCI and GDS with the ignition ON.

*** NOTE**

Do not start the engine. For push-button start vehicles, without depressing the brake pedal, turn the ignition ON by pressing the start button twice.

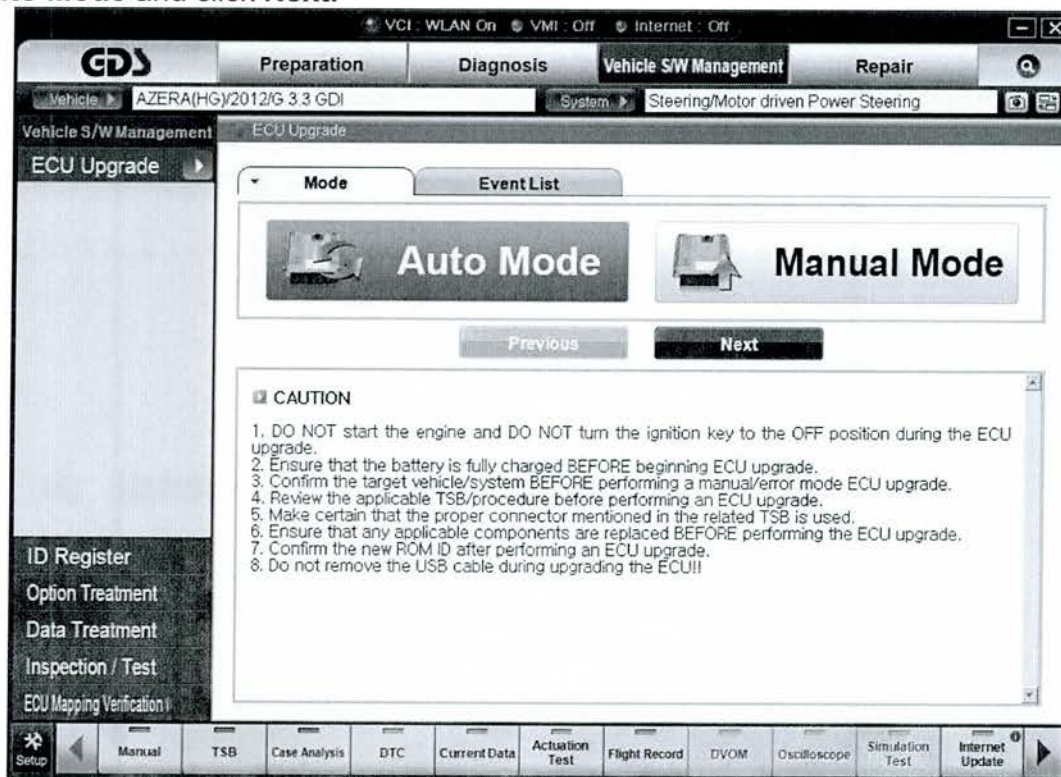
AUTOMATIC UPDATE PROCEDURE USING GDS:

1. Choose **VIN** or **ECU Upgrade** on the initial screen.
2. Enter the vehicle information by pressing the **VIN Auto Detect** button, entering the vehicle's VIN or selecting the vehicle model, model year, engine/fuel type and **EPS (MDPS)** as the system and then click **OK**.



3. Select **ECU Upgrade** on the initial screen after entering the vehicle information.

4. Select **Auto Mode** and click **Next**.

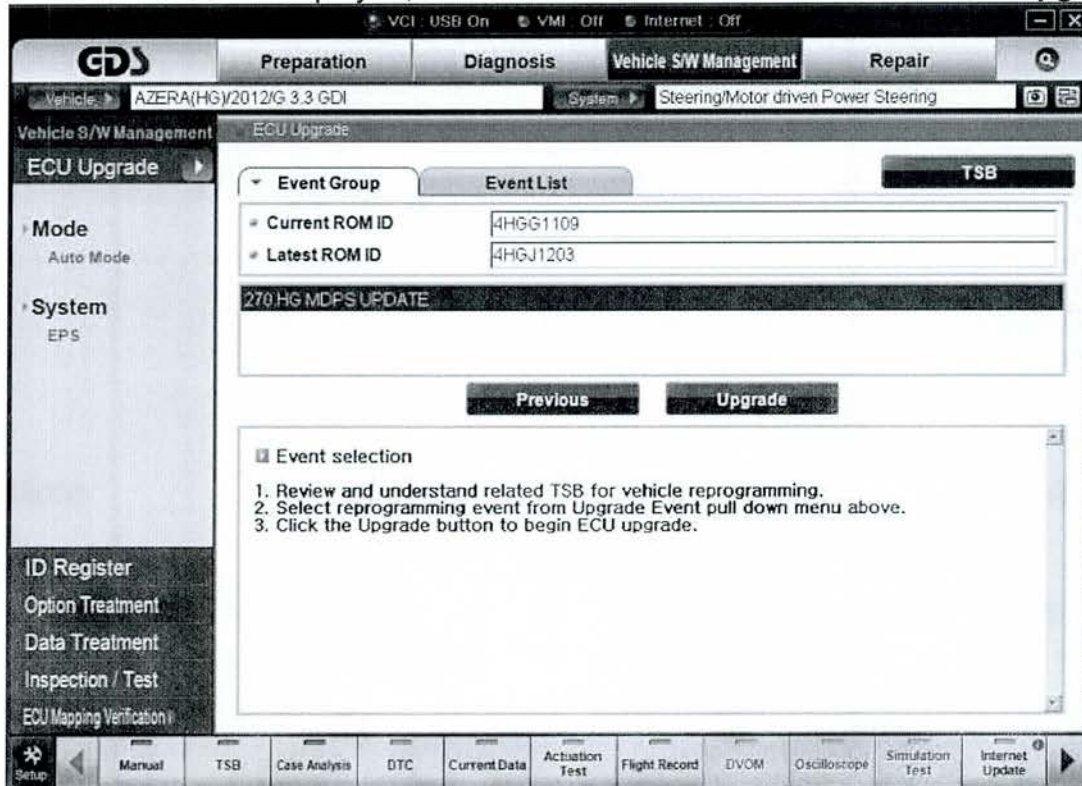


5. Select **EPS** in the left ECU Upgrade column. Read **Preparation** and click **OK**.



6. The GDS will read the vehicle's ROM ID.

7. After the **Current ROM ID** is displayed, select **"270.HG MDPS UPDATE"** and click **Upgrade**.



8. The vehicle battery voltage is checked to make sure it is at least 12 volts to ensure reliable upgrade results. Click **OK** if the results indicate **Voltage is OK**.

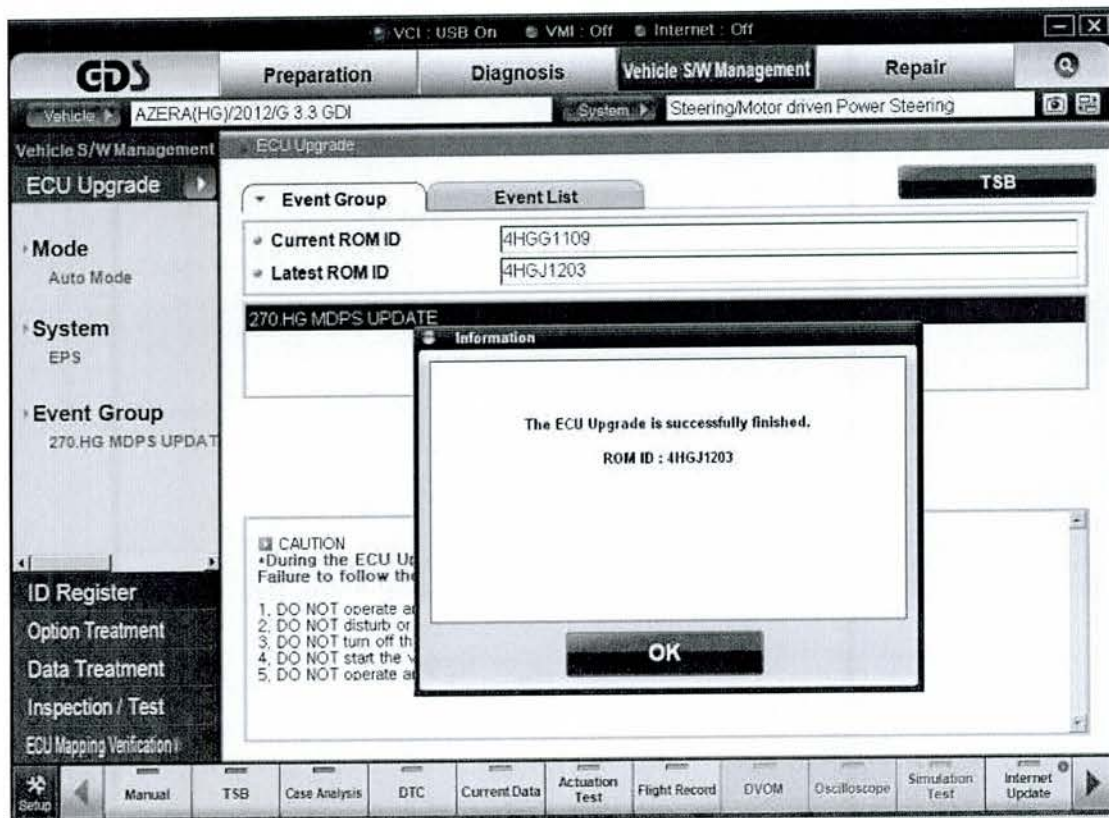
*** NOTE**

If voltage is below 12 volts, click Cancel and then run the engine to ensure adequate battery charge state for reliable update results.

9. Upgrade will begin and the progress of the upgrade will appear on the bar graph.

10. Upgrade will occur until 100% is reached on the bar graph. Turn the ignition OFF for 10 seconds, place it back in the ON position and then click **OK** to continue.

11. Click **OK** on the final screen, which indicates the update is complete.



12. Check if any incidental **Diagnostic Trouble Codes (DTCs)** has been created by the upgrade and clear the DTCs present.

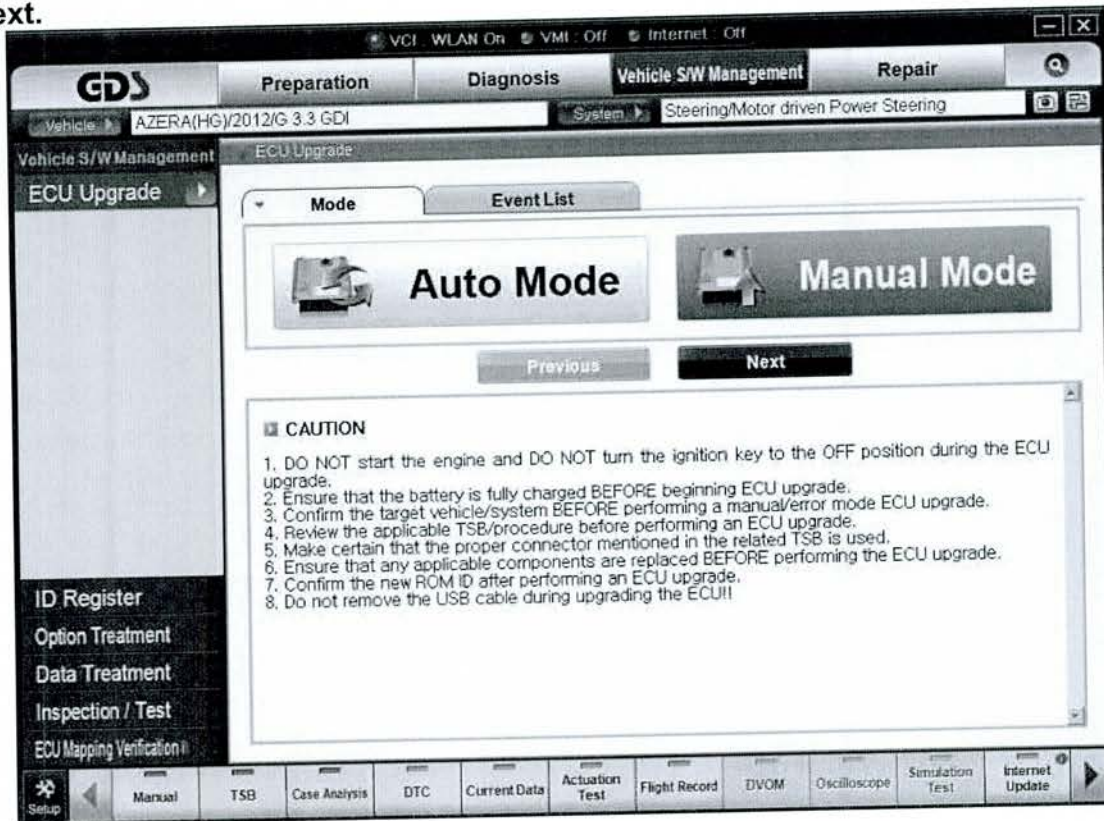
13. Start the engine and turn the steering wheel to confirm proper operation of the steering system.

MANUAL UPDATE PROCEDURE USING GDS:

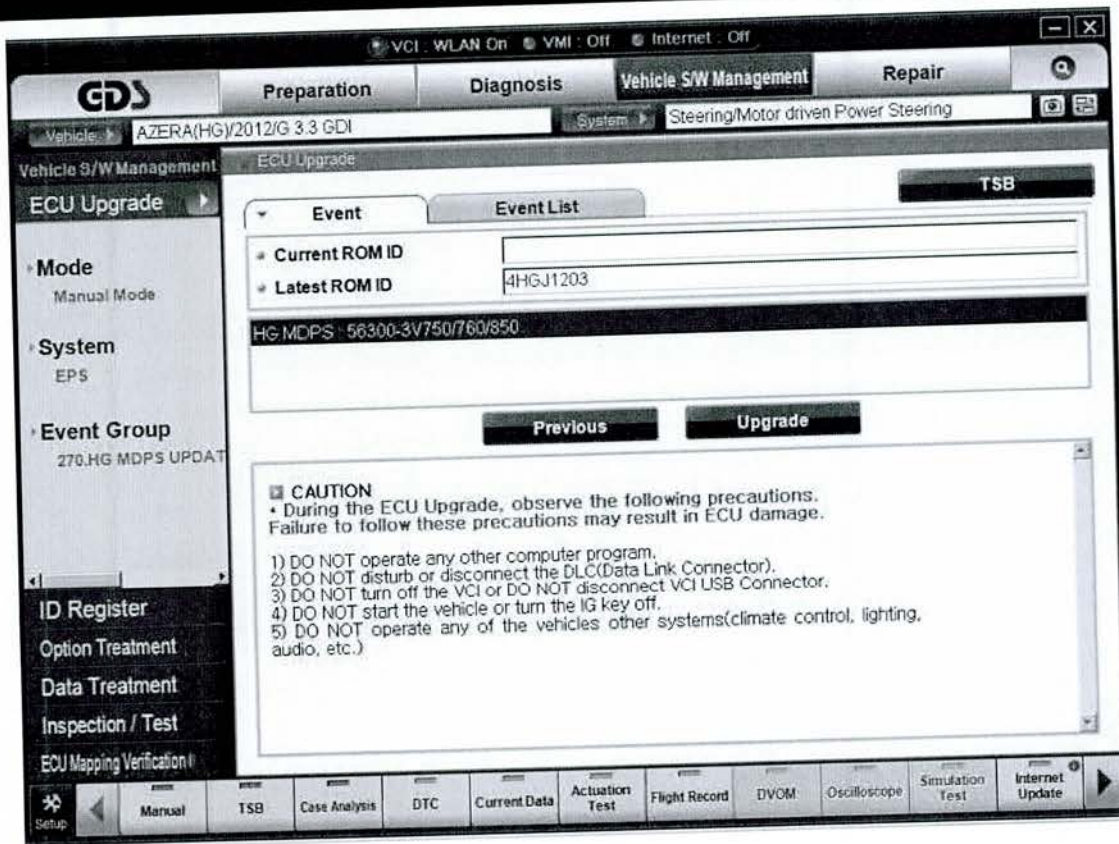
* CAUTION

- MANUAL mode update should be performed only when the AUTO mode update fails.
- If AUTO mode update fails, turn the ignition OFF for about 10 seconds, turn it be ON again to reset the control unit before performing the MANUAL update.

1. Within the **ECU Upgrade** screen, select **Manual Mode**, then **EPS** in the left **ECU Upgrade** column and click **Next**.



2. Select upgrade event **#270. HG MDPS UPDATE**. Select **HG MDPS: 56300-3V750/760/850** and click **Upgrade**.



3. Enter the appropriate password from the below table then click **OK**.

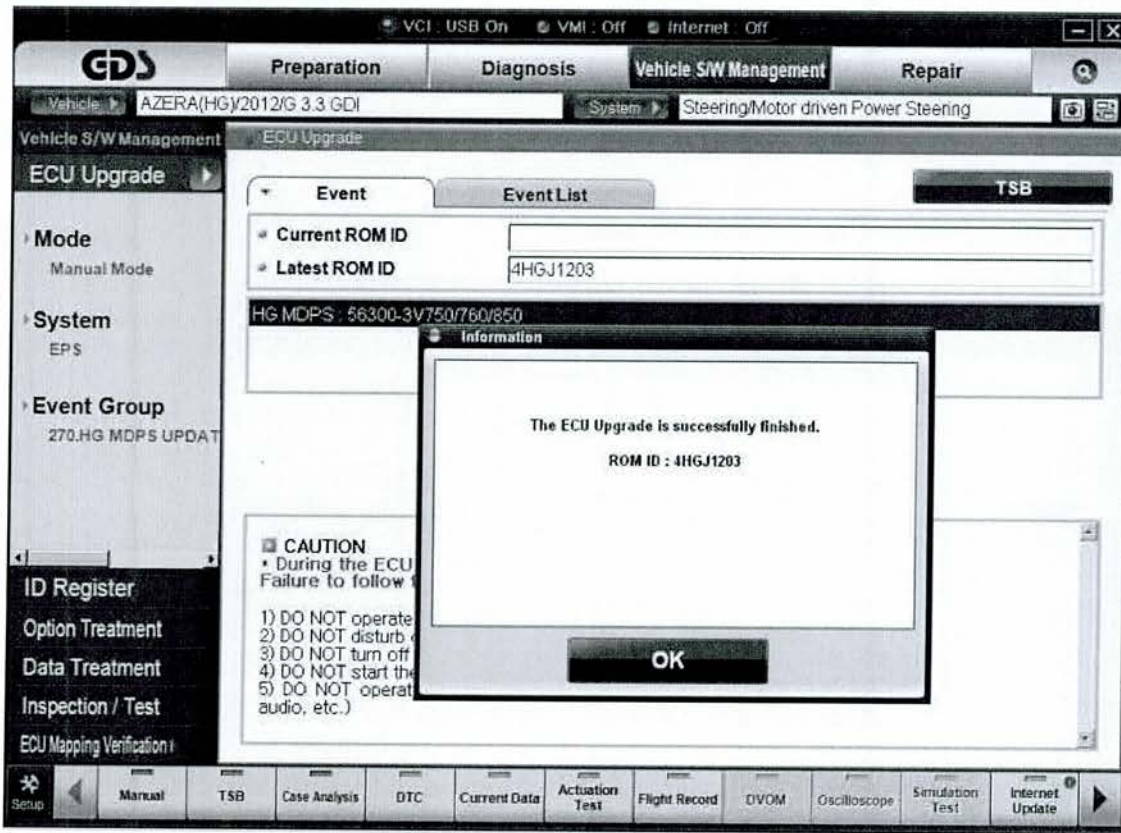
MENU	PASSWORD
HG MDPS: 56300-3V750/760/850	3850

4. The vehicle battery voltage is checked to make sure it is at least 12 volts to ensure reliable upgrade results. Click **OK** if the results indicate **Voltage is OK**.

*** NOTE**

If voltage is below 12V, click **Cancel** and then run the engine to ensure an adequate battery charge state for reliable update results.

5. The update will begin and the progress of the update will appear on the bar graph.
6. The update will proceed until 100% is reached on the bar graph. Turn the ignition OFF for 10 seconds, place it back in the ON position and then click **OK** to continue.
7. Click **OK** on the final screen, which indicates update is complete.



8. Check if any incidental **Diagnostic Trouble Codes (DTCs)** have been created by the update and clear the **DTCs** present.

9. Start the engine and turn the steering wheel to confirm proper operation of the steering system.