

**Reference:**

ITB12-044

**Date:**

August 9, 2012

## VOLUNTARY SERVICE CAMPAIGN 2013 JX35 INTELLIGENT BRAKE ASSIST

**CAMPAIGN I.D. #:** P2540**APPLIED VEHICLE:** 2013 JX (L50)

Check Service Comm to confirm campaign eligibility.

### INTRODUCTION

Infiniti is conducting a voluntary service campaign on certain 2013 JX35 vehicles to reprogram the RADAR and ADAS Control Units. This procedure will be performed at no charge for parts or labor.

### IDENTIFICATION NUMBER

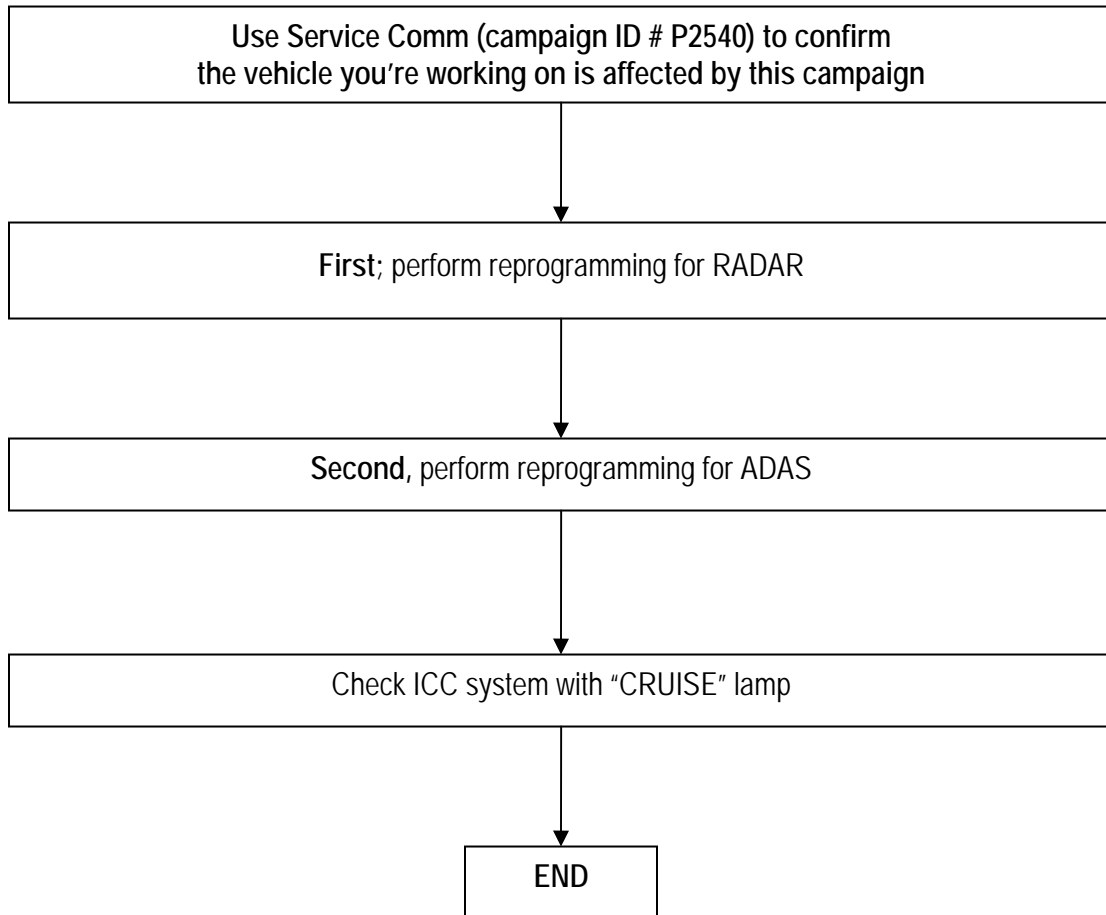
Nissan has assigned identification number P2540 to this campaign. This number must appear on all communications and documentation of any nature dealing with this campaign.

### DEALER RESPONSIBILITY

Dealers are to correct each vehicle falling within the range of this campaign that enters the service department. This includes vehicles purchased from private parties or presented by transient (tourist) owners and vehicles in a dealer's inventory.

Infiniti Bulletins are intended for use by qualified technicians, not 'do-it-yourselfers'. Qualified technicians are properly trained individuals who have the equipment, tools, safety instruction, and know-how to do a job properly and safely. NOTE: If you believe that a described condition may apply to a particular vehicle, DO NOT assume that it does. See your Infiniti dealer to determine if this applies to your vehicle.

## REPAIR OVERVIEW



## SERVICE PROCEDURE

**IMPORTANT:** Before starting, make sure:

- If the CONSULT PC has an active screen saver – disable it – turn it off.
- ASIST on the CONSULT PC has been freshly synchronized (updated).
- All C-III plus software updates (if any) have been installed.

**NOTE:** The CONSULT PC automatically gets applicable reprogramming data during ASIST synchronization.

- A screen print for warranty documentation can be done from the CONSULT PC during this process while still connected to the vehicle.
- **No DTCs stored.**
  - Use C-III plus to perform Self Diagnosis for all systems.
  - If there are any DTCs, diagnose, perform repairs, and erase DTCs **before** continuing.
- The Extended Storage Switch is pushed in (customer deliver mode).

**IMPORTANT:** You must follow the reprogramming steps in this Service Procedure twice:

- **First;** reprogram the RADAR.
- **Second;** reprogram the ADAS.

**NOTE:** Make sure to perform this reprogramming twice. First for the RADAR, second for the ADAS.

1. Connect the plus Vehicle Interface (plus VI) to the vehicle.
  - Make sure to use the correct VI for C-III plus (plus VI).

**CAUTION:** Make sure the plus VI is securely connected. If the plus VI connection is loose during reprogramming, the process will be interrupted and the **related control unit may be damaged**.

2. Connect the AC Adapter to the CONSULT PC.

**CAUTION:** Be sure to connect the AC Adapter. If the CONSULT PC battery voltage drops during reprogramming, the process will be interrupted and the **related control unit may be damaged**.

3. Connect the USB cable between the CONSULT PC and the Plus VI.

4. Connect a battery charger to the vehicle battery:

- Set the battery charger at a low charge rate.

**NOTE:** The GR-8 (Battery and Electrical Diagnostic Station) set to "Power Supply" mode is recommended.

**CAUTION:** Be sure the battery charger is connected securely to the battery. Make sure the battery voltage stays between 12.0V and 15.5V during reprogramming. If the battery voltage goes out of this range during reprogramming, the **related control unit may be damaged**.

5. Turn off all external Bluetooth® devices (e.g., cell phones, printers, etc.) within range of the CONSULT PC and the VI.

**CAUTION:** Make sure to turn off all external Bluetooth® devices. If Bluetooth® signal waves are within range of the CONSULT PC and the VI during reprogramming, reprogramming may be interrupted and the **related control unit may be damaged**.

6. Turn the ignition ON with the engine OFF.

- The engine must not start or run during the reprogramming procedure.

7. Turn OFF all vehicle electrical loads such as exterior lights, interior lights, HVAC, blower, rear defogger, audio, NAVI, seat heater, steering wheel heater, etc.

**IMPORTANT:** Make sure to turn OFF all vehicle electrical loads. Make sure the battery voltage stays between 12.0V and 15.5V during reprogramming. If the battery voltage goes out of this range during reprogramming, the **related control unit may be damaged**.

8. Turn ON the CONSULT PC.
9. Turn OFF all software (programs), including ASIST.
10. Select CONSULT-III plus (open C-III plus).
11. Wait for the plus VI to be recognized / connected.
  - Serial number will display when the plus VI is recognized / connected.

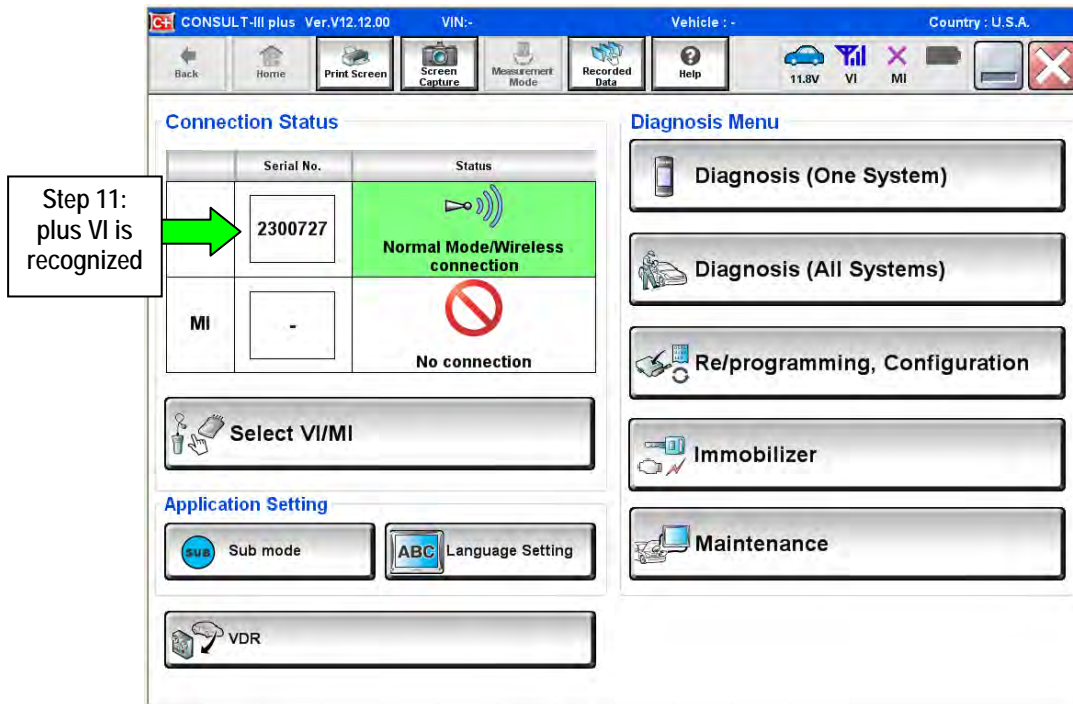


Figure 1

12. Select Re/programming, Configuration.

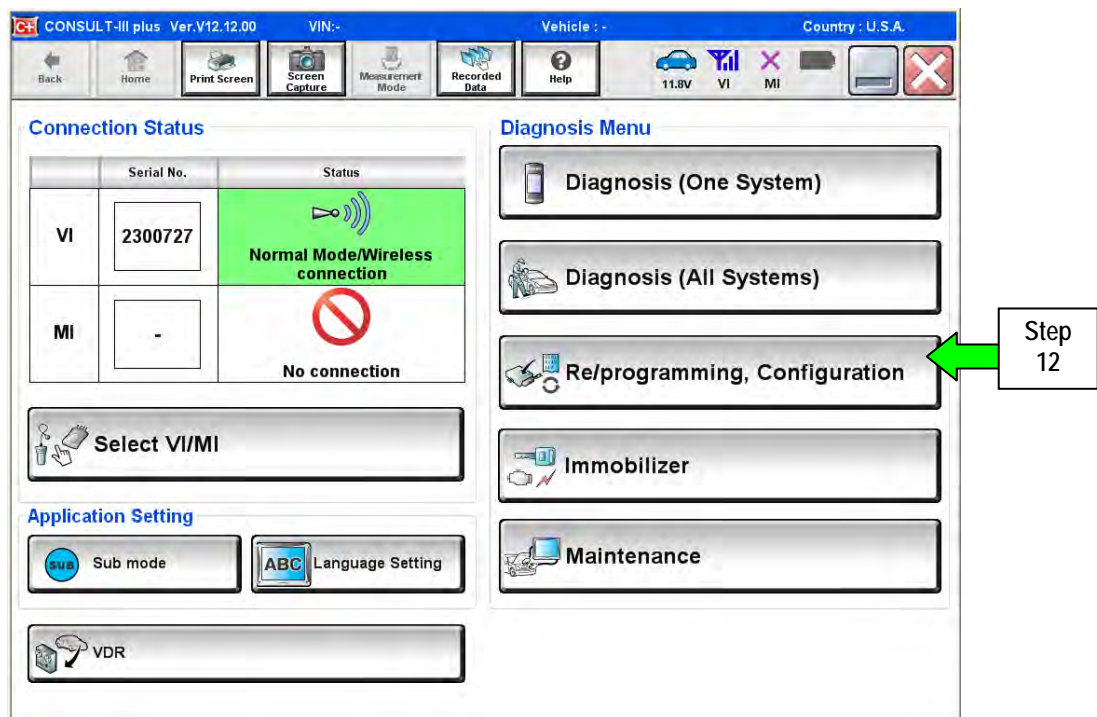


Figure 2

13. Use arrows (if needed) to view and read all precautions.
14. Check the box confirming the precautions have been read.
15. Select **Next**.

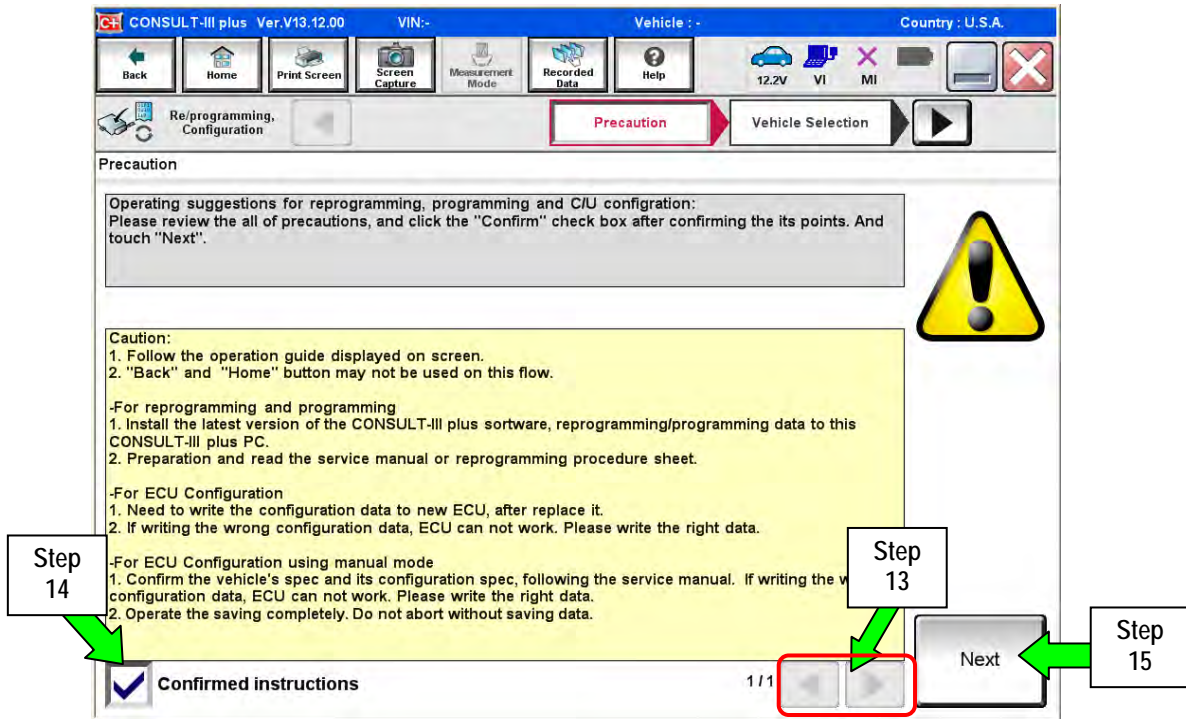


Figure 3

16. Select **INFINITI**, **INFINITI JX35**, and **2013**.
  - If the screen in Figure 4 does not display, skip to step 20.

17. Click **Select**

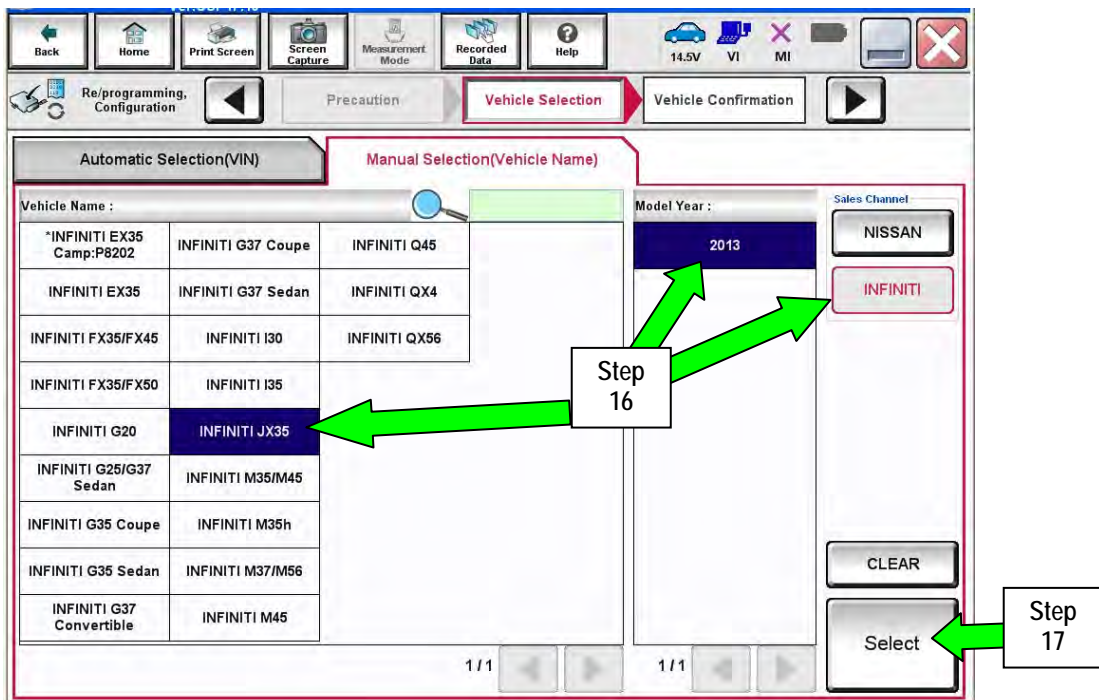


Figure 4

18. Verify all information is correct, and then select **Confirm**.

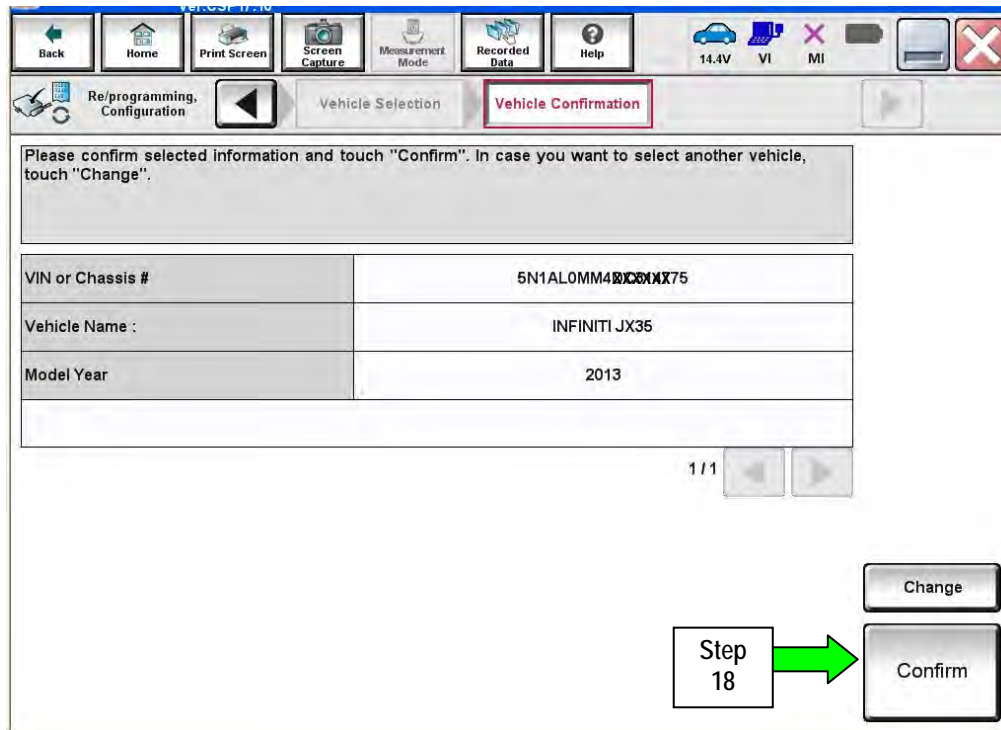


Figure 5

19. Wait for System Call to complete (a progress bar will display).

20. Verify the VIN is correct, and then select **Confirm**.

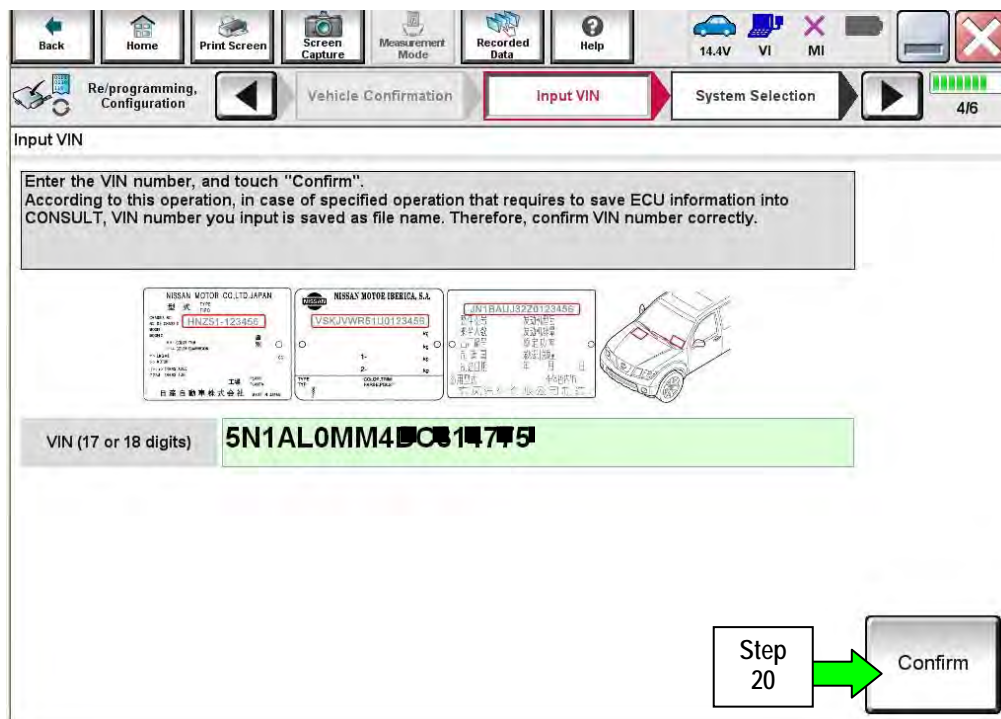


Figure 6

21. Select LASER/RADAR first – Reprogram RADAR first.

For second reprogram, select ICC/ADAS – Reprogram ADAS second.

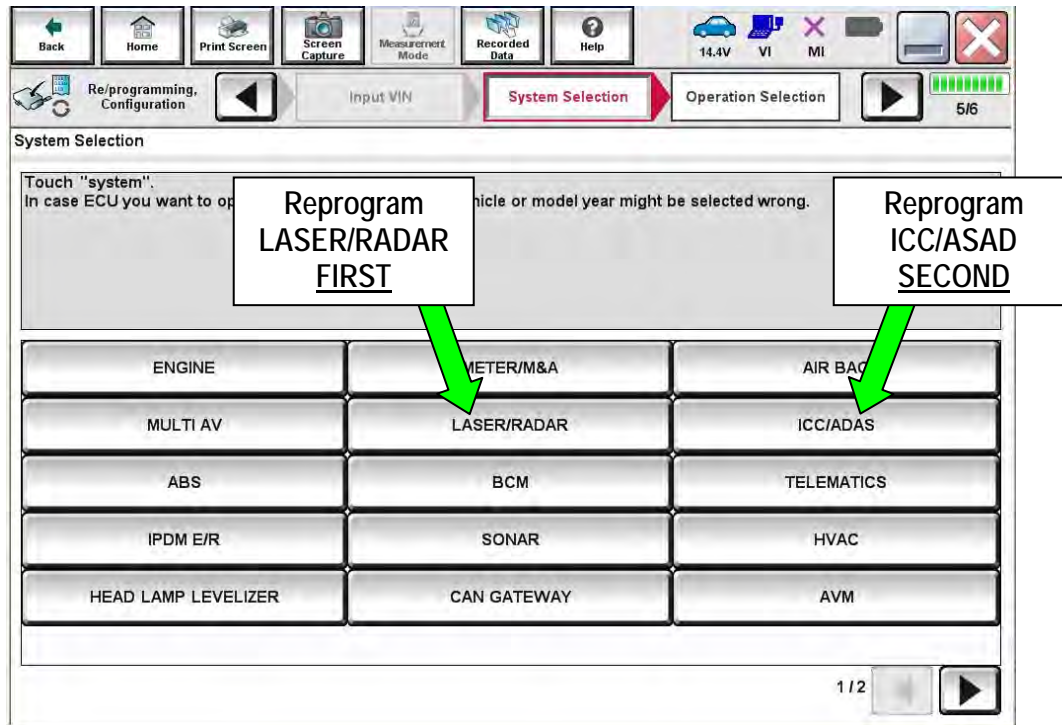


Figure 7

22. Select Reprogramming.

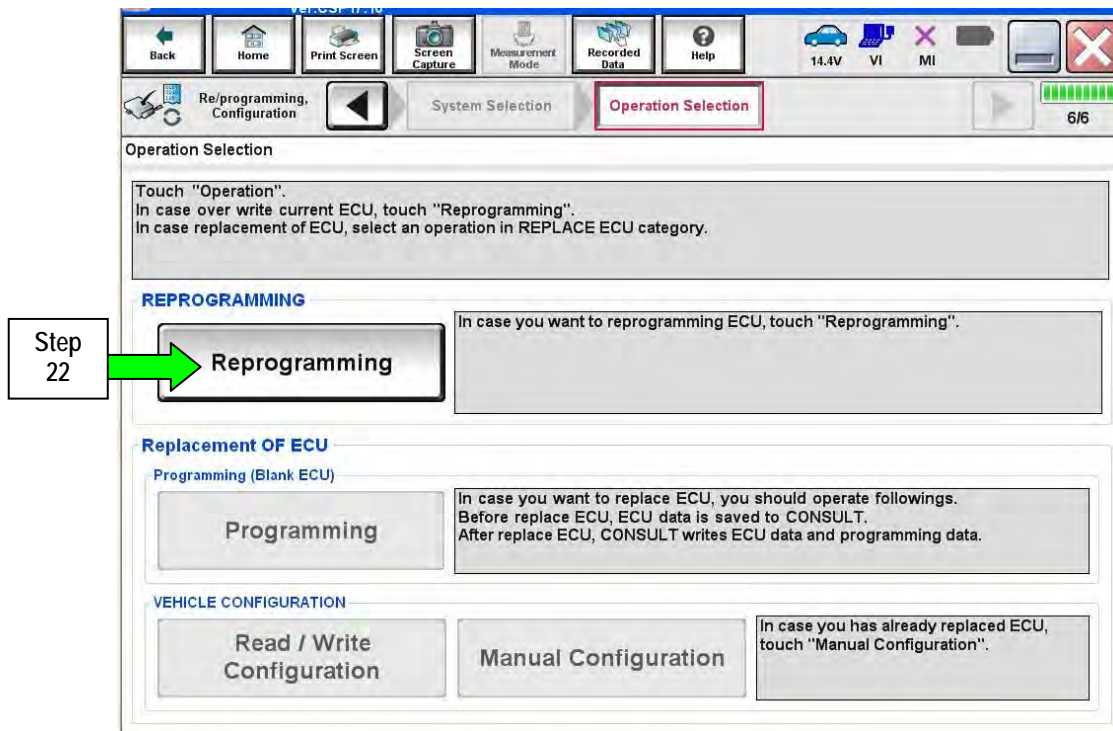


Figure 8



23. Confirm System is LASER/RADAR or ICC/ADAS.

24. Select Save

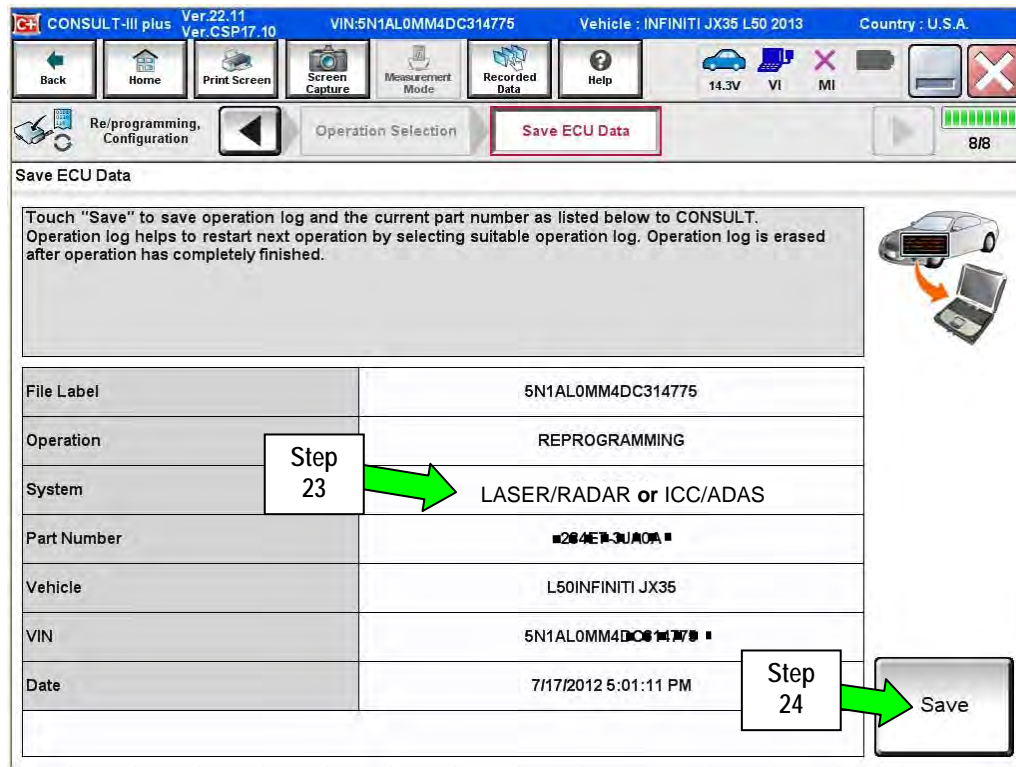


Figure 9

25. Select Next

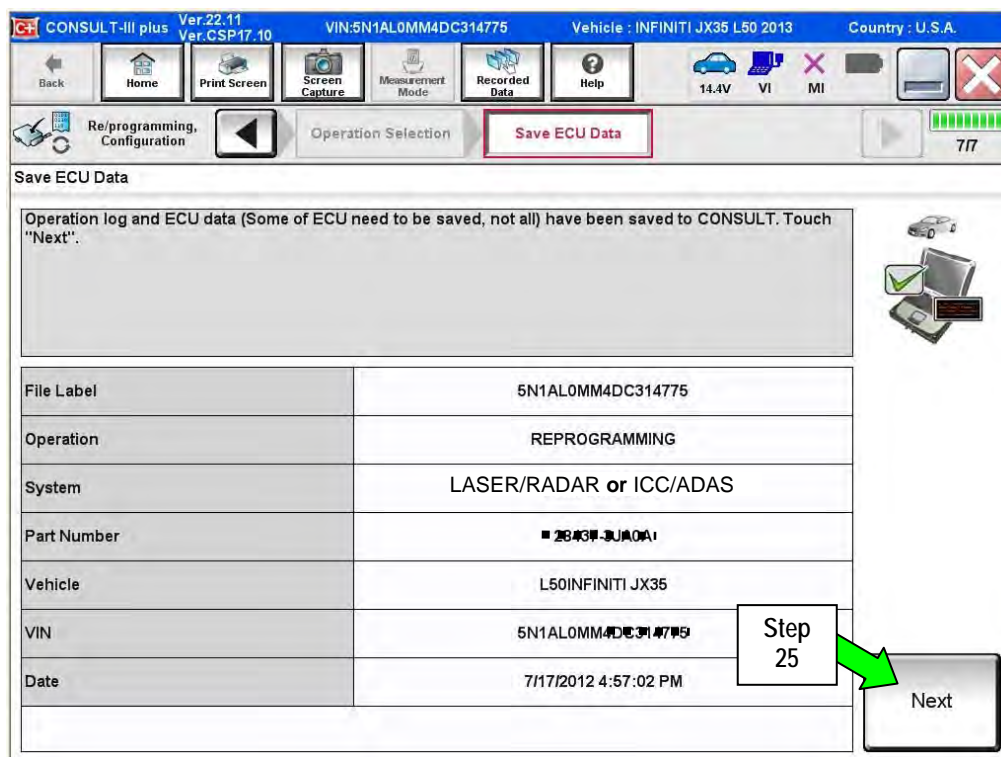


Figure 10

26. Use arrows (if needed) to view and read all precautions.

27. Check the box confirming the precautions have been read.

28. Select Next

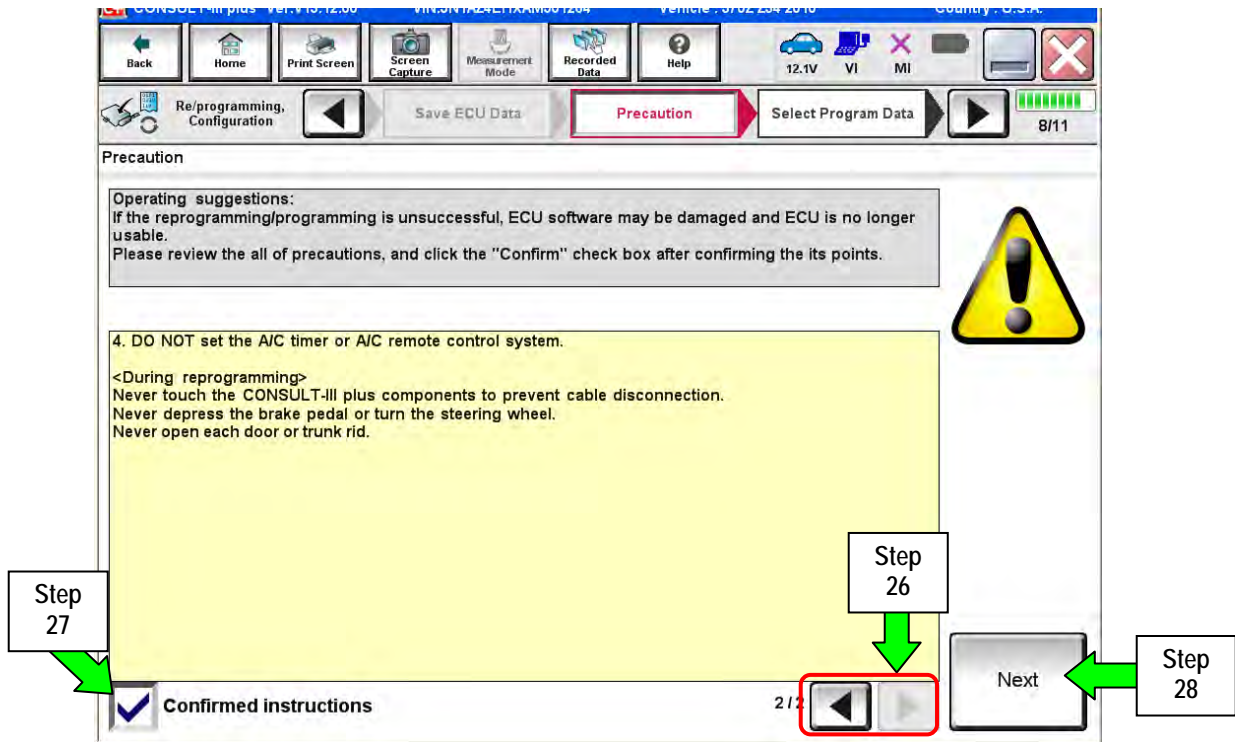


Figure 11

**Step 29 for RADAR** - Check the following:

- Part Number After Repro/programming --- 28437 - 3JA2A
- Current Part Number --- 28437 - 3JA0A
- Other Information --- IBA CM
- Select **Next** if above are correct.

**NOTE:** RADAR must be reprogrammed first.

**Step 29 for ADAS** - Check the following:

- Part Number After Repro/programming --- 284E7 - 3JA1C
- Current Part Number --- 284E7 - 3JA0A
- Other Information --- IBA CM
- Select **Next** if above are correct.

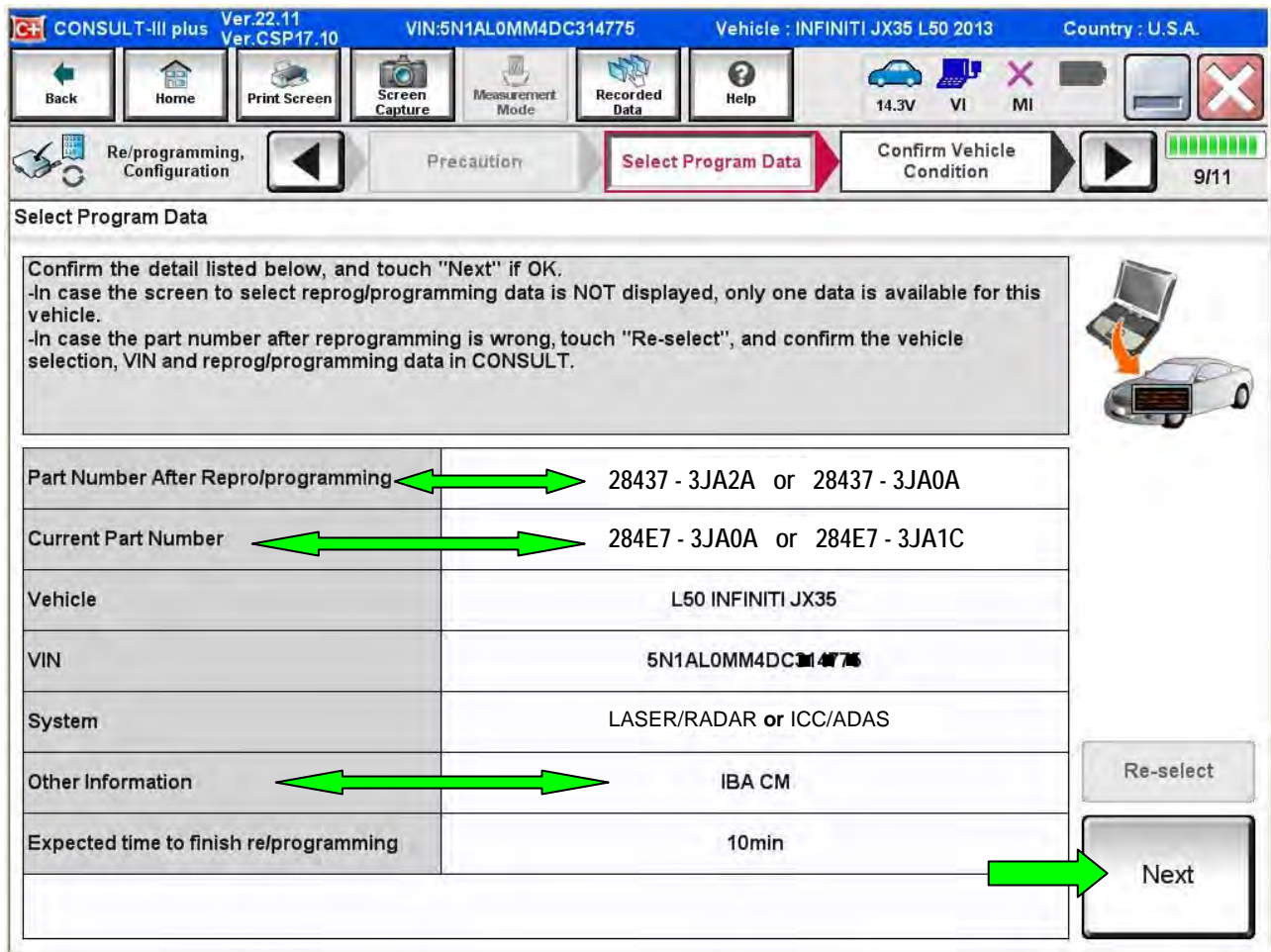


Figure 12

NOTE:

- If you get this screen and it is blank (no reprogramming listed), it means there is no RADAR or ADAS C/U reprogramming available for this vehicle.

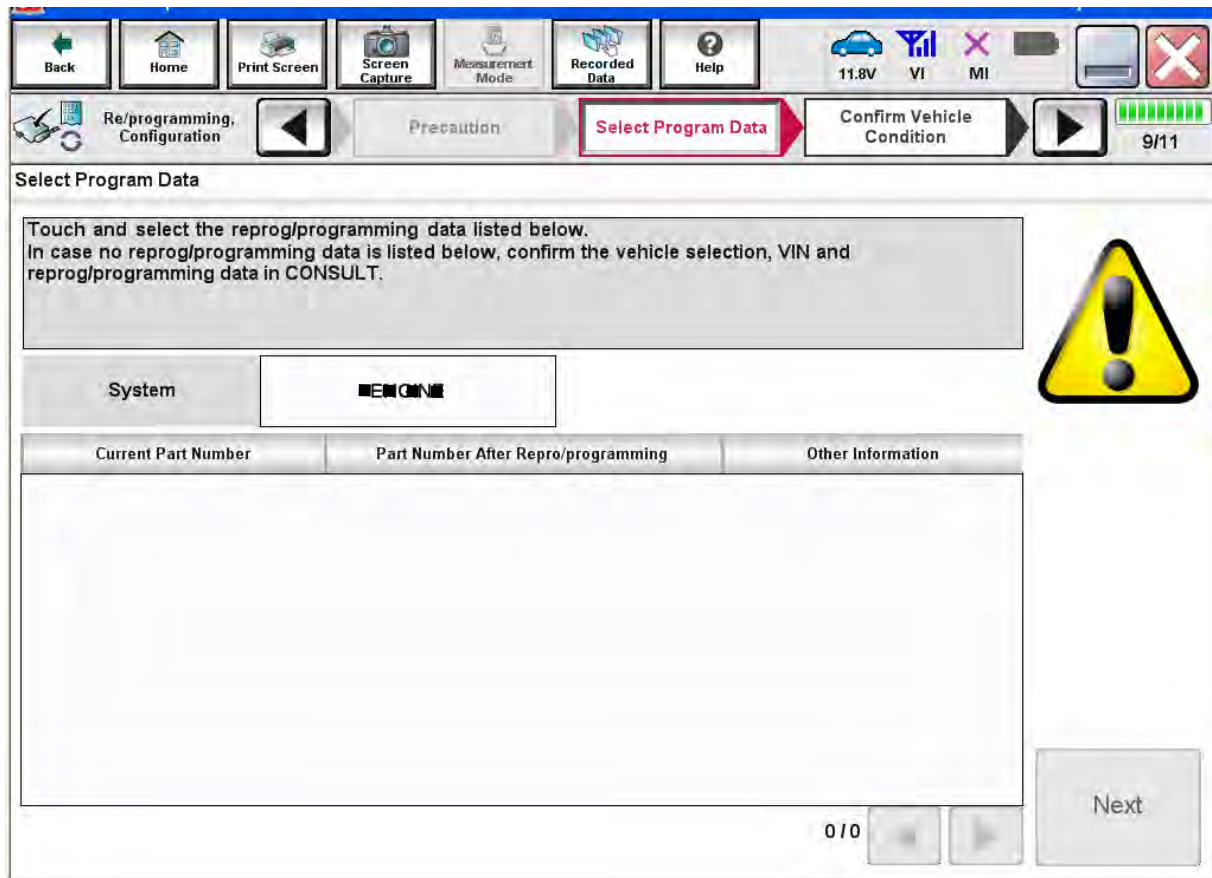


Figure 13

30. Make sure OK is highlighted green (battery voltage must be between 12.0 and 15.5 Volts).

31. Select Next.

**IMPORTANT:** Battery voltage must stay between 12.0 and 15.5 Volts during reprogramming or ECM reprogramming may be interrupted and ECM may be damaged.

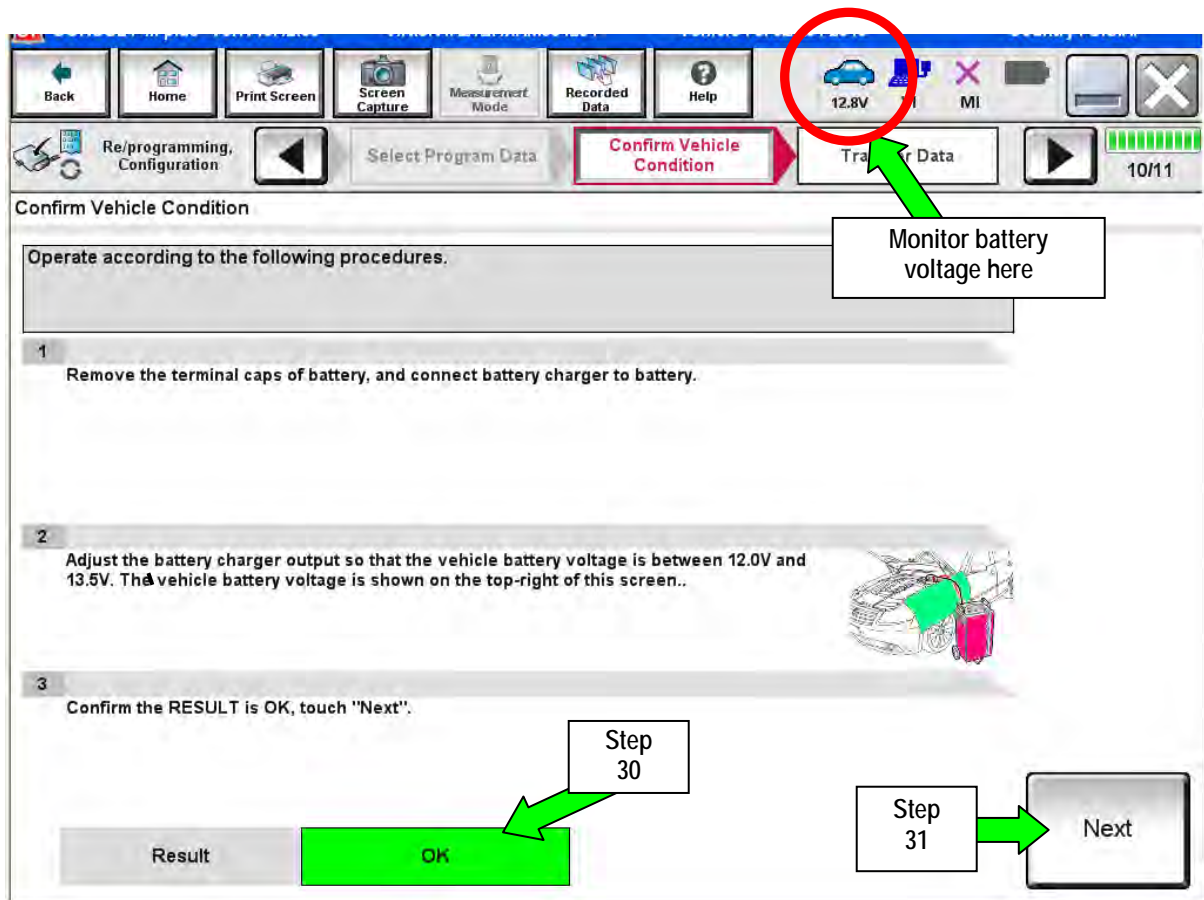


Figure 14

NOTE: In the next step, the reprogramming process will begin when **Start** is selected.

32. Select **Start**.

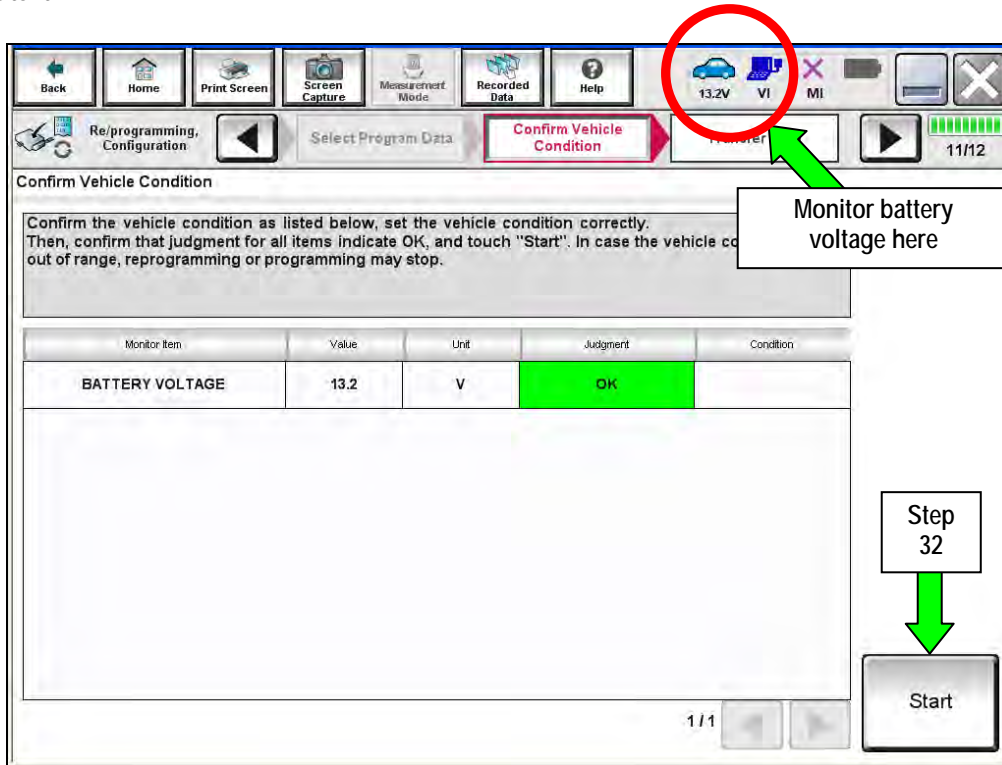


Figure 15

33. Wait for both progress bars to complete.

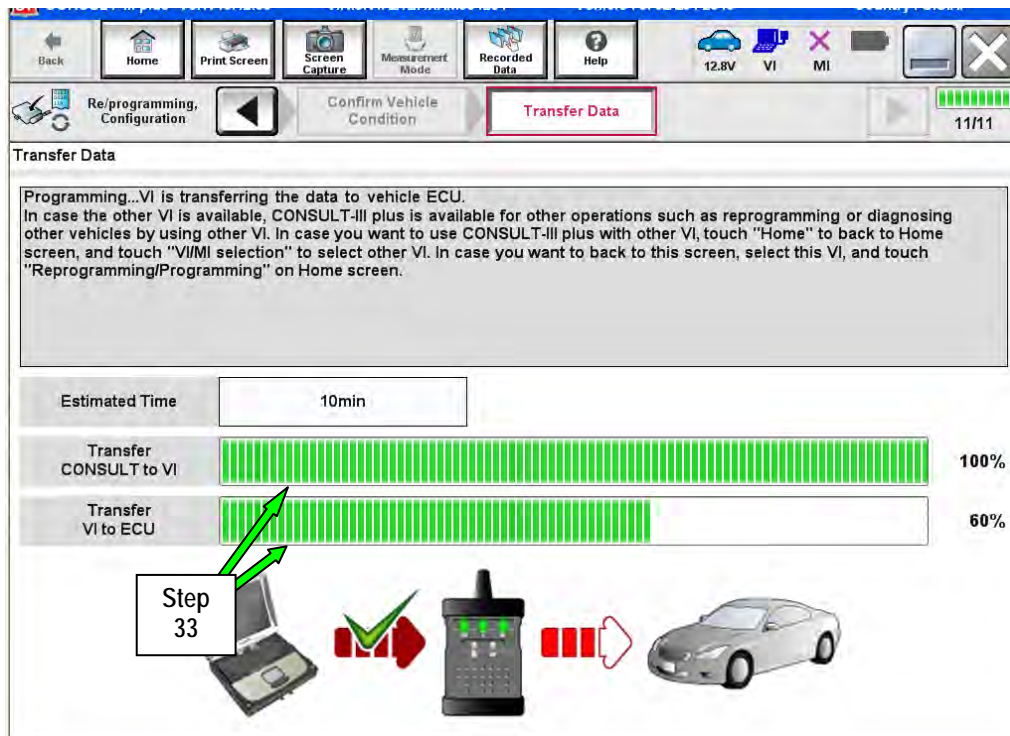


Figure 16

**NOTE:** If the message shown in Figure 17 appears, there is data stored in the plus VI. Select "Yes" to proceed with reprogramming.

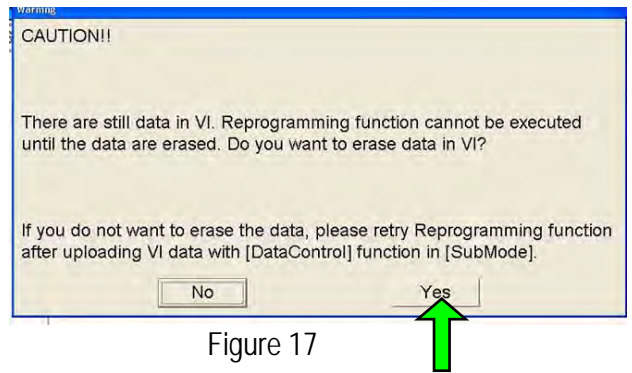


Figure 17

34. When the screen in Figure 18 displays, the reprogramming is complete.

35. Select **Next**.

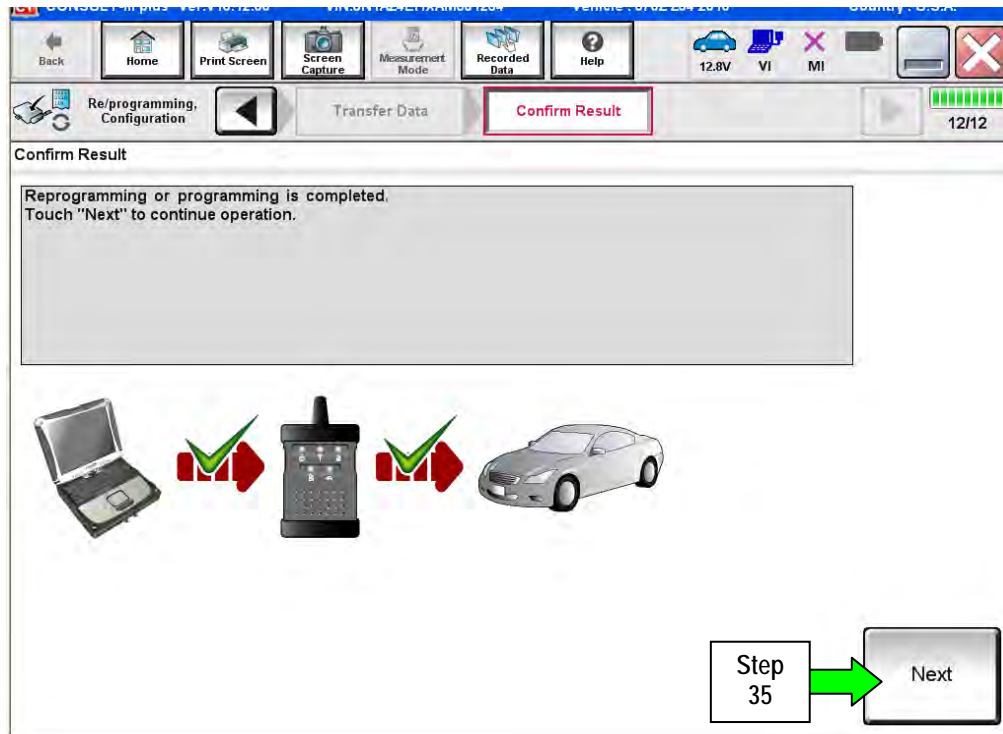


Figure 18

36. Wait for System Call to complete (a progress bar will display).

37. Erase all DTCs as follows:

- a. Turn the ignition OFF.
- b. Turn the Ignition ON (foot off of brake – push button twice).
- c. Wait for DTC erase to complete.

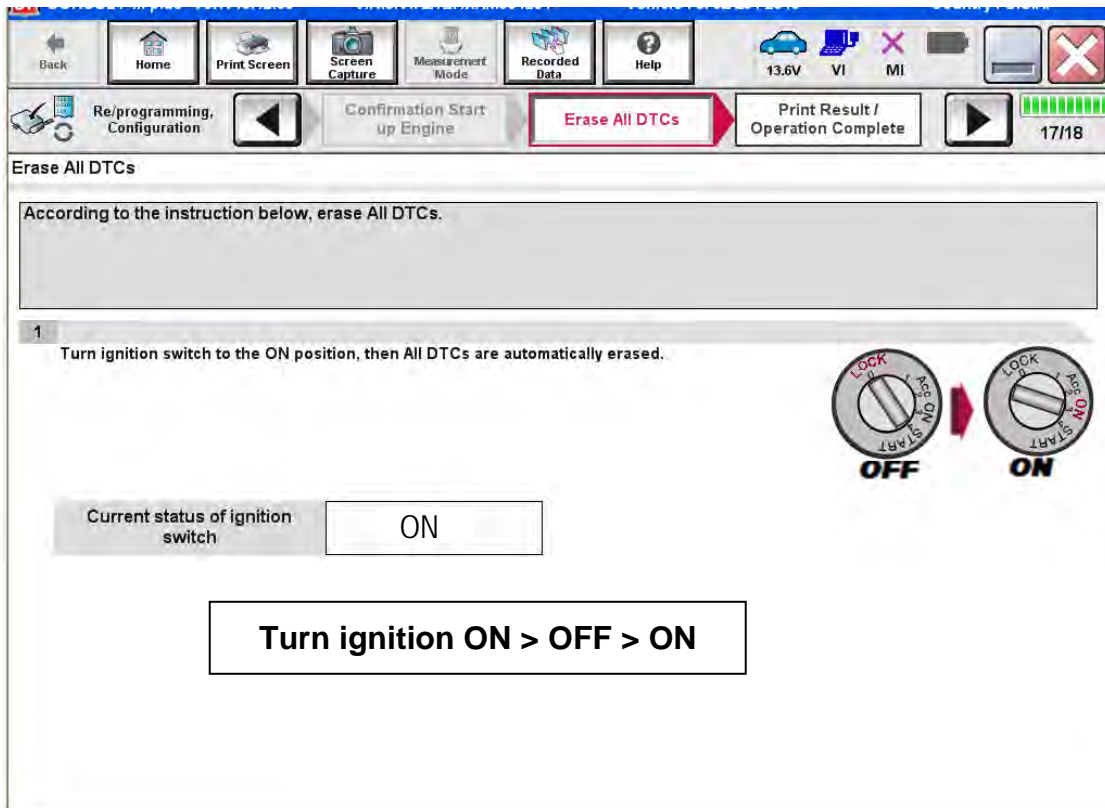


Figure 19



38. Print a copy of this screen (Figure 20) and attach it to the repair order.

**NOTE:**

- For Radar – the after and before part numbers will be the same, this is OK.
- For ADAS – the after and before part numbers will be different.

39. Select **Confirm**.

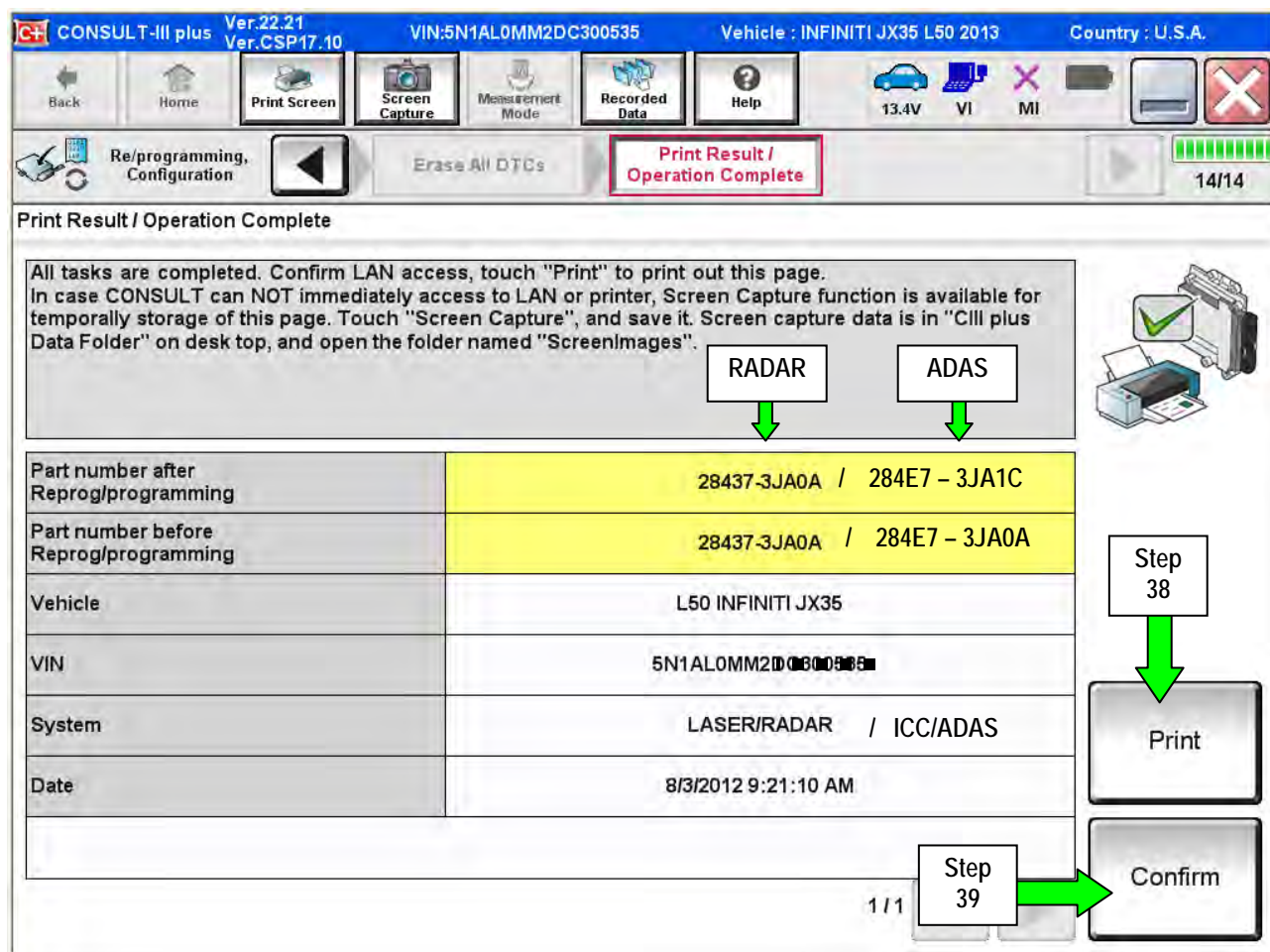


Figure 20

**NOTE:** If you can not print the above screen:

- Select Screen Capture.
  - Name the file.
  - Save the file in My Documents.
- A copy of the screen is now saved in the CONSULT PC. It can be retrieved and printed at a later time.

40. Select Home

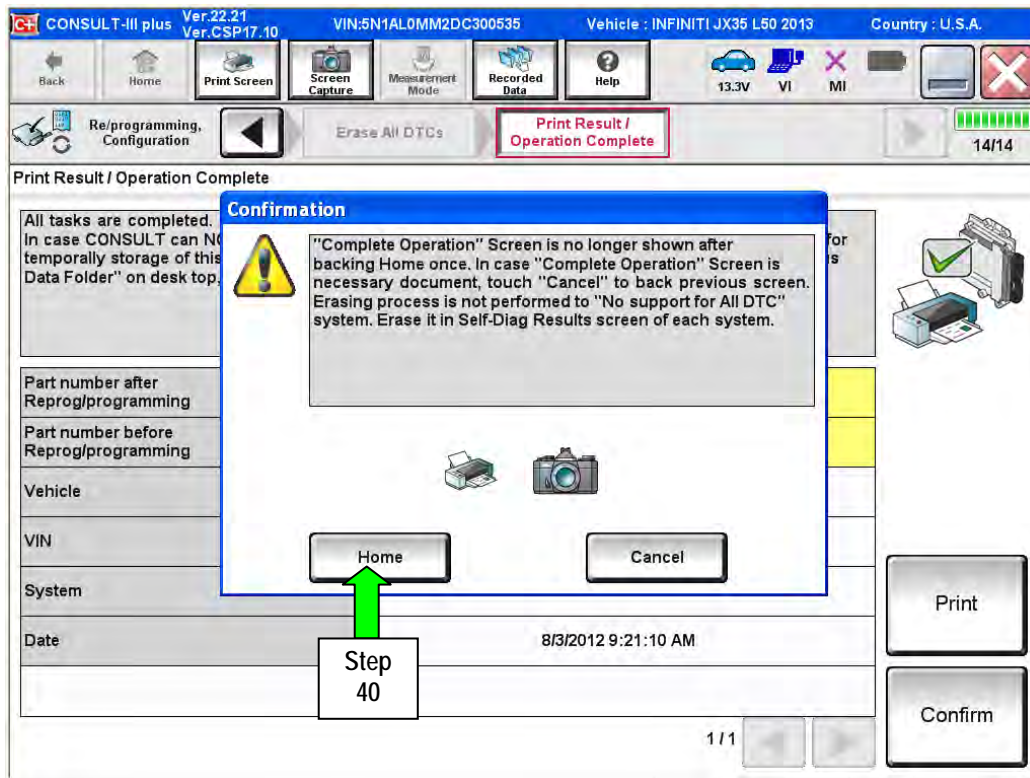


Figure 21

- Return to step 12 and perform reprogramming for ADAS.
- If both reprograms have been done (RADAR and ADAS), continue with the next step.

41. Disconnect the battery charger from the vehicle.

42. Close C-III plus.

43. Turn the ignition OFF.

44. Disconnect the plus VI from the vehicle.

45. Start the engine. Make sure the transmission is in Park and the parking brake is set.

46. Push the CRUISE ON/OFF switch on the steering wheel.

47. Watch the "CRUISE" lamp for one minute.

- If CRUISE lamp is ON steady (normal) after one minute, check is OK.

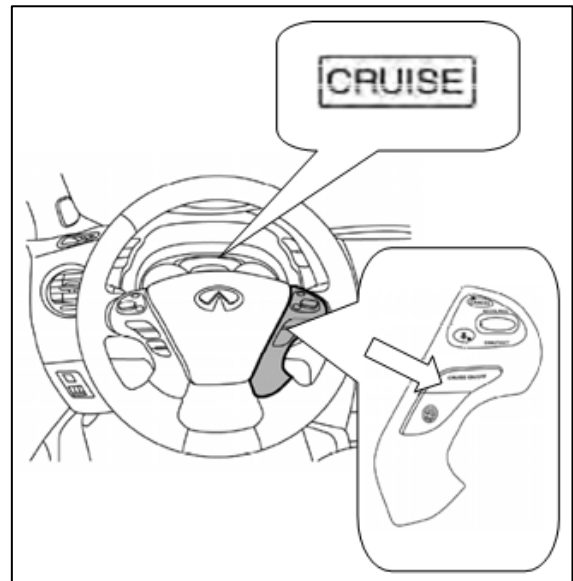


Figure 22

48. Turn the ignition OFF.

### CLAIMS INFORMATION

Submit a "CM" line claim using the following claims coding:

CAMPAIGN ("CM") I.D.	DESCRIPTION	OP CODE	FRT
P2540	Reprogram RADAR and ADAS	P25400	0.5

