



SERVICE BULLETIN

Classification:

HA08-004b

Reference:

NTB08-101b

Date:

August 28, 2012

2007-2012 VERSA HATCHBACK / 2007 – 2011 VERSA SEDAN; DRIVER'S AND/OR PASSENGER FLOOR CARPET WET

This bulletin has been amended to update the Applied Vehicles.
Please discard previous versions of this bulletin.

APPLIED VEHICLES: 2007 – 2012 Versa Hatchback (C11)
2007 – 2011 Versa Sedan (C11)

APPLIED VINs and DATES: 2007 – 2011; all VINs all dates.
2012 Vehicles built before:
3N1BC1CP(*)CL 373405 / January 20, 2012
or
3N1BC1CP(*)CK 239737 / January 26, 2012

IF YOU CONFIRM

- The front floor carpet is wet.
And
- There is no water entry into the vehicle from outside the vehicle.

ACTION

Perform steps 1-8 of the Service Procedure in this bulletin to check if water is draining into the vehicle from the A/C evaporator case.

If you determine this bulletin applies, install a drain hose extension over the existing A/C evaporator drain.

- See this Service Procedure for instructions on cutting and installing the modified hose.

IMPORTANT: The purpose of "ACTION" (above) is to give you a quick idea of the work you will be performing. You MUST closely follow the entire Service Procedure as it contains information that is essential to successfully completing the repair.

Nissan Bulletins are intended for use by qualified technicians, not 'do-it-yourselfers'. Qualified technicians are properly trained individuals who have the equipment, tools, safety instruction, and know-how to do a job properly and safely. NOTE: If you believe that a described condition may apply to a particular vehicle, DO NOT assume that it does. See your Nissan dealer to determine if this applies to your vehicle.

PARTS INFORMATION

DESCRIPTION	PART #	QUANTITY
Generic Bulk Hose (3/4" Inner Diameter)	Local Source	1
Bearing Seal, Exhaust Joint	20695-ED10A	1
Bearing Seal, Exhaust Joint	20695-8H310	1
3M™ Fast 'n Firm™ Seam Sealer or Equivalent (if needed)	3M™ P/N 08505*	As needed**
Plain Nut (if needed)	Local Source	1
Plain Washer (if needed)	Local Source	1

* The 3M™ product listed above is not available through your local PDC or the Direct Ship Chemical Care Products Program. Please source it through a local 3M™ supplier.

NOTE: To obtain an MSDS or for help finding a local source for the 3M™ product listed above, contact 3M™ Automotive Aftermarket Division at 1-877-MMM-CARS.

** This sealer is considered a shop supply. Do NOT include it on your warranty claim.

CLAIMS INFORMATION

Submit a Primary Failed Part (PP) line claim using the following claims coding:

DESCRIPTION	PFP	OP CODE	SYM	DIA	FRT
A/C drain cup water leak check	(1)	TX31AA	ZE	32	1.0

OR

DESCRIPTION	PFP	OP CODE	SYM	DIA	FRT
A/C drain cup water leak check and install hose	(1)	TX32AA	ZE	32	1.7

(1) Submit Claim Using the Primary Failed Part Number **92590-ED002**.

SERVICE PROCEDURE

1. Remove the center console. Refer to section IP in the Electronic Service Manual (ESM) for removal procedure.
2. Look into the console body assembly and confirm the stud shown in Figure 1 has a nut installed.



Figure 1

3. If a nut is not installed, apply sealer around the base of the stud and fasten a plain washer and nut onto the stud.

4. Disconnect the wire harness and cable from bracket and floor mount.

5. Remove the bracket.

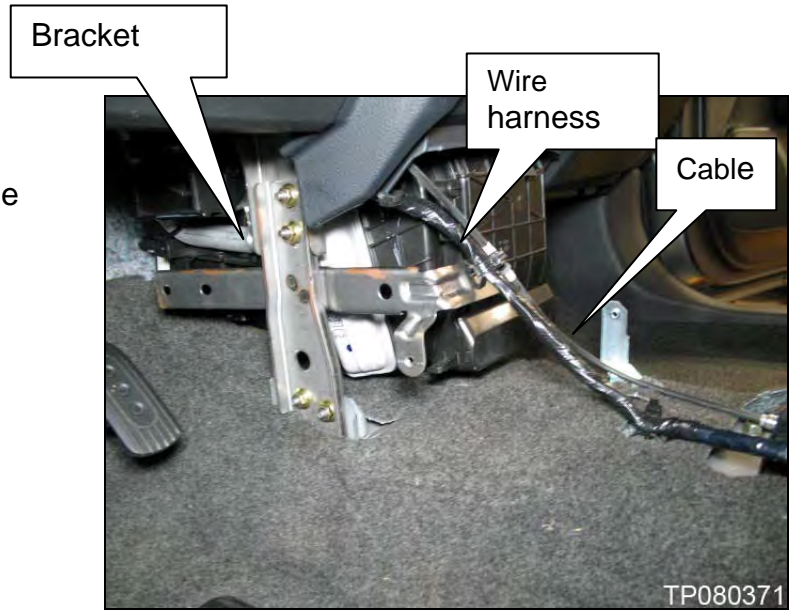


Figure 2

6. Cut the carpet from the front edge near the bulkhead to the drain cup opening in the carpet, then from the drain cup opening to the shifter. See Figure 3.

NOTE: The drain cup is located underneath the HVAC case.

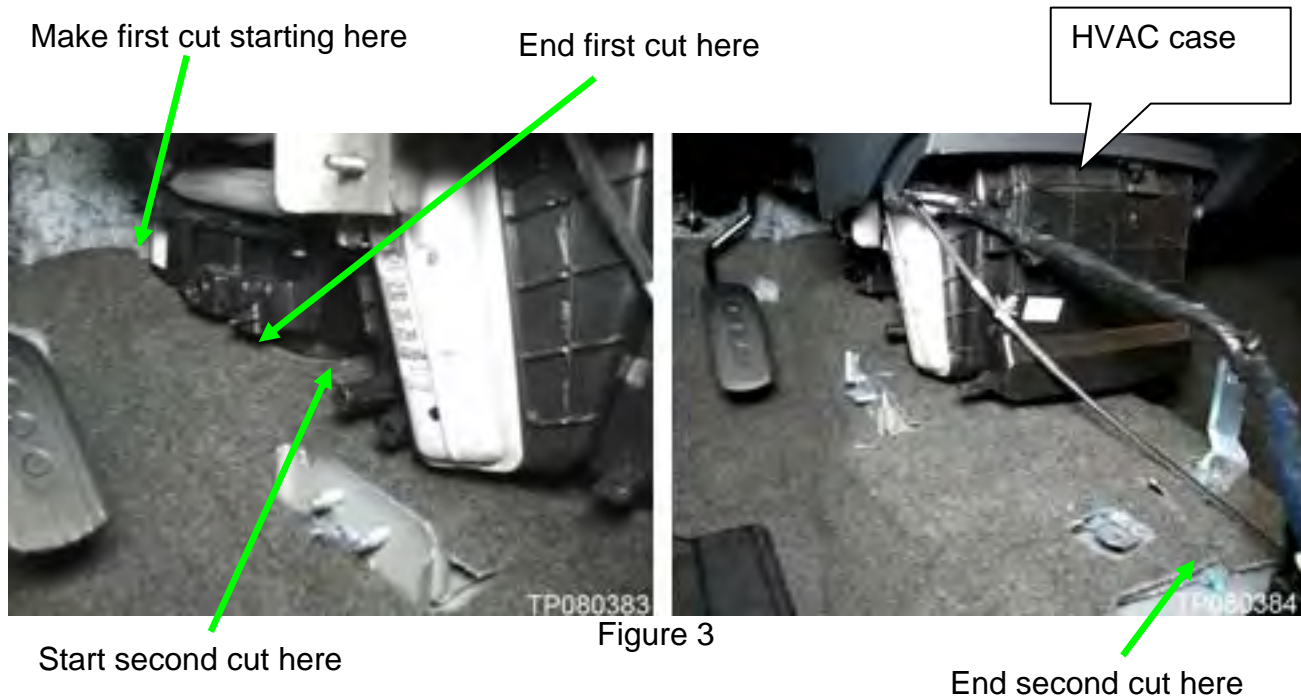


Figure 3

7. Pull the carpet back on the passenger and driver's side to expose insulation.

8. Cut the insulation so that it can be partially removed to expose the drain cup.



Figure 4

9. Start the engine. Turn on the A/C and set to full cold, fresh intake, and fan speed 4.

10. Confirm if water enters the vehicle.

- If water can be seen entering the vehicle between the drain cup and body, proceed with the rest of this TSB.
- If not, this TSB does not apply. Return to ASIST or the ESM for further diagnostic assistance.



Figure 5

11. Turn the ignition switch off.

12. Carefully push in the four (4) tabs located on the drain cup to release the drain cup from the body of the vehicle.

CAUTION: Do not attempt to remove the drain cup from the vehicle body without pushing the tabs in.

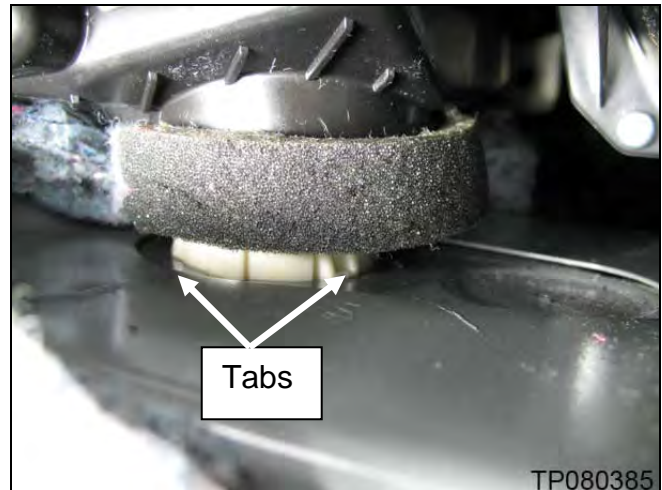


Figure 6

13. Lift the vehicle with a hoist.

14. Remove the body brace located underneath the front exhaust tube.

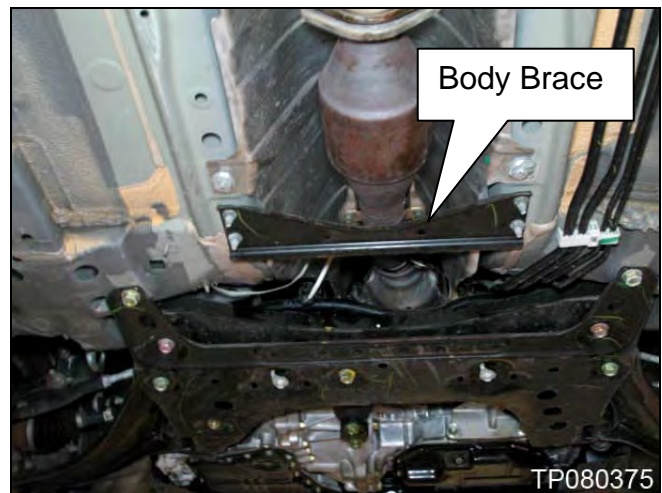


Figure 7

15. Disconnect the oxygen sensor.

16. Detach the ground strap.

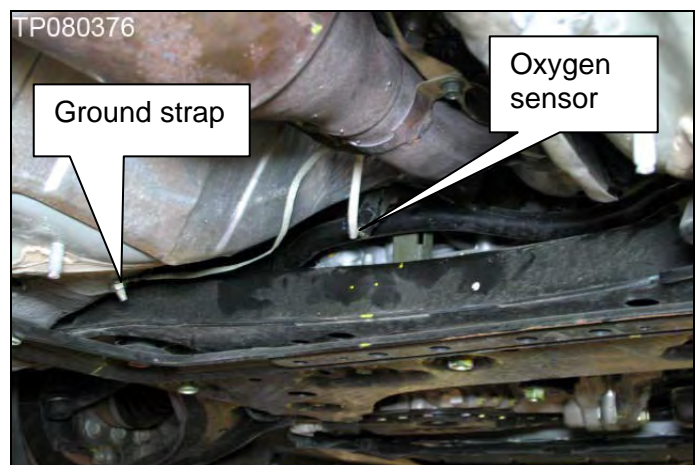


Figure 8

17. Remove only the exhaust front tube.

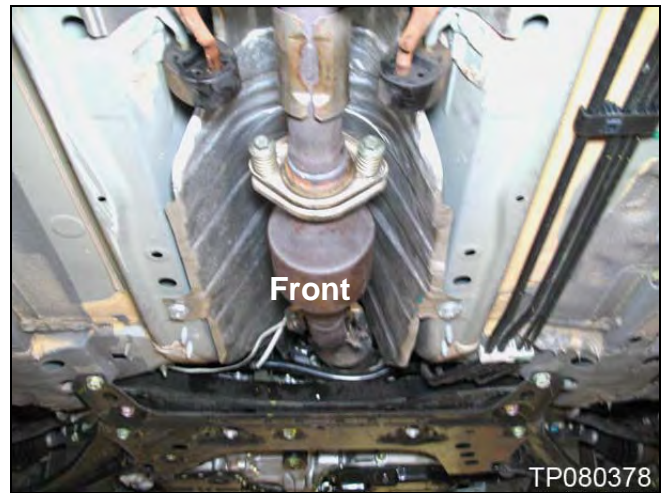


Figure 9

18. Detach the center muffler from the rubber hangers.

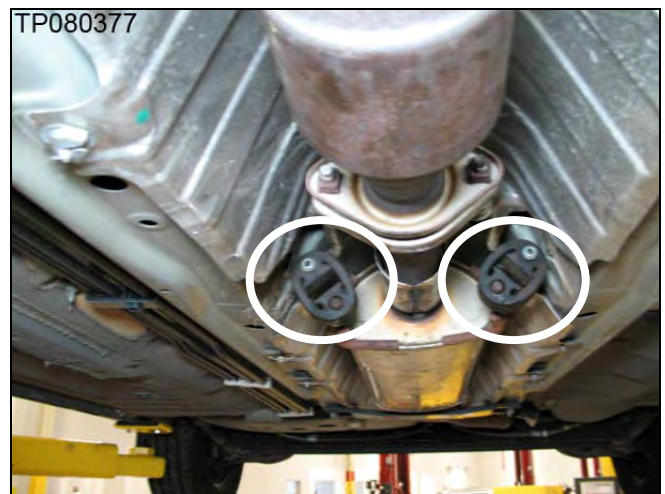


Figure 10

19. Remove the front heat shield.



Figure 11

20. Remove the drain cup from vehicle body.



Figure 12

21. Cut a piece of $\frac{3}{4}$ " (19 mm) internal diameter (ID) generic bulk hose to a length of 1.50" (38 mm).

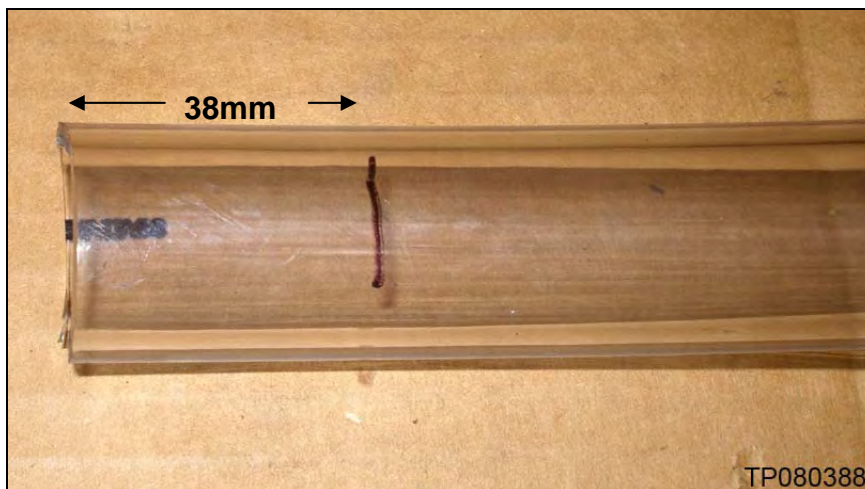


Figure 13

22. Cut a 0.98" (25 mm) V-shape notch in the hose.

NOTE: A clear plastic hose is shown here for illustrative purposes only.

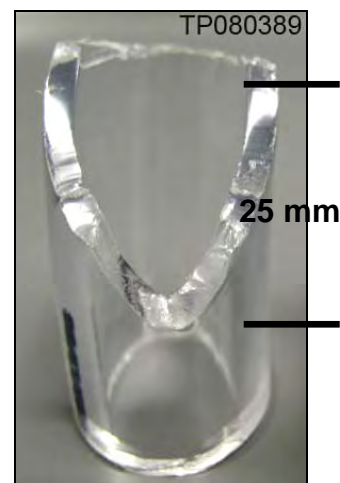


Figure 14

23. Install the modified hose over the existing drain hose.

- Make sure the notched side is facing downward and towards the passenger side of the vehicle.

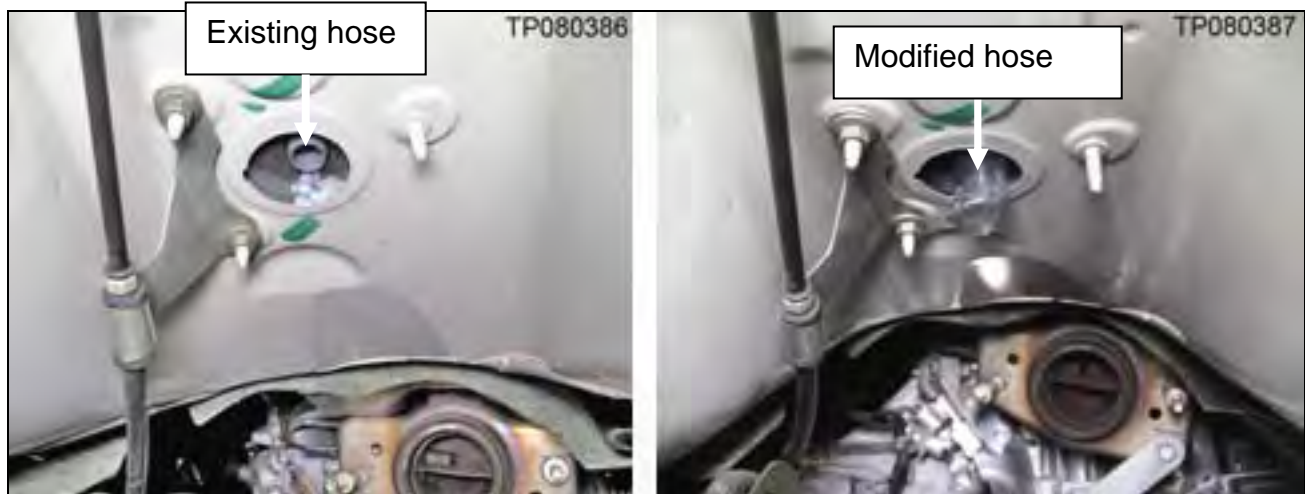


Figure 15

24. Install the drain cup.

25. Reinstall all parts removed in reverse order of removal.

- Install new exhaust seals.



Figure 16

26. Confirm the issue has been resolved.