

 HYUNDAI NEW THINKING. NEW POSSIBILITIES. Technical Service Bulletin	GROUP CAMPAIGN	NUMBER 12-01-025
	DATE SEPTEMBER 2012	MODEL(S) VI EQUUS
SUBJECT: VI EQUUS FRONT STRUT REPLACEMENT (SERVICE CAMPAIGN TL5)		

★ IMPORTANT

***** Dealer Stock and Retail Vehicles *****

Dealers must perform this Service Campaign on all affected vehicles prior to customer retail delivery and whenever an affected vehicle is in the shop for any maintenance or repair.

When a vehicle arrives at the Service Department, access Hyundai Motor America's "Warranty Vehicle Information" screen via WEBDCS to identify open Campaigns.

Description: This bulletin describes the procedure to replace the front suspension struts on some Equus vehicles. Following strut replacement, air filling and ride height sensor calibration is required, as is front alignment adjustment.



Applicable Vehicles: VI Equus produced from SOP to May 30, 2011

Warranty Information:

OP CODE	OPERATION	OP TIME
20C063R0	Front Air Strut Assembly Replacement & Wheel Alignment	2.0 M/H

NOTE: Submit Claim on Campaign Claim Entry Screen

Circulate To: General Manager, Service Manager, Parts Manager, Warranty Manager, Service Advisors, Technicians, Body Shop Manager, Fleet Repair

SUBJECT: VI EQUUS FRONT STRUT REPLACEMENT (SERVICE CAMPAIGN TL5)

Parts Information:

PART NAME	FIGURE	BEFORE	AFTER	QTY
Air strut assembly front left		54605-3N510 54605-3N516	54605-3N517-QQH	1
Air strut assembly front right		54606-3N510 54606-3N516	54606-3N517-QQH	1

Service Procedure:

*** CAUTION**

- Do not carry the strut by the wiring, this could damage it.
- Use caution so that water does not flow into the wire connector of the struts.
- Do not impact or drop the struts
- Take care to keep the air fill valve clean and free of contamination.

1. Lift the vehicle off the ground, remove the hub cap (A), and unfasten the front wheel mounting nuts (B) and remove the front wheel.

*** NOTE**

Tightening torque:
90~110N.m (9~11 kgf.m, 65~80 lb-ft)

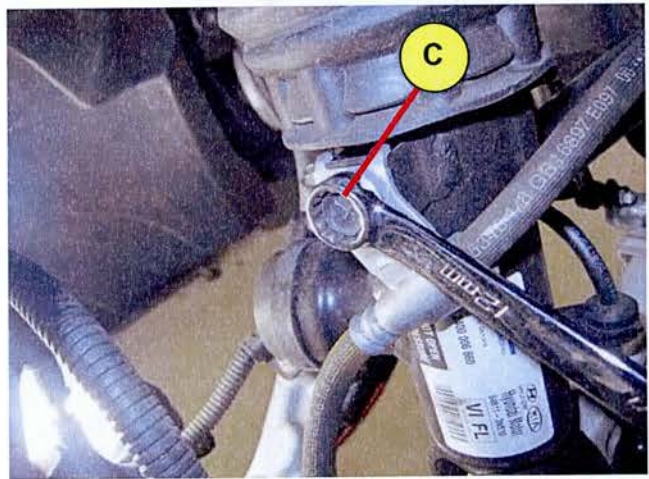


SUBJECT: VI EQUUS FRONT STRUT REPLACEMENT (SERVICE CAMPAIGN TL5)

2. Remove the brake line bracket mounting bolt (C).

*** NOTE**

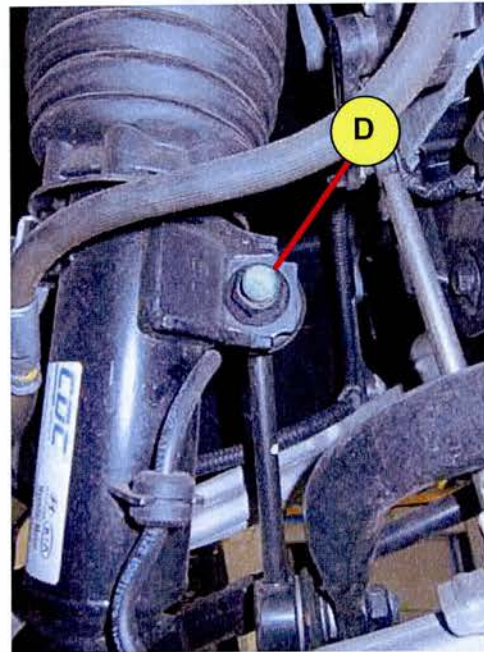
Tightening torque:
24.5~29.4.m (2.5~3 kgf.m, 18.1~21.7 lb-ft)



3. Remove the sway bar end link mounting nut (D).

*** NOTE**

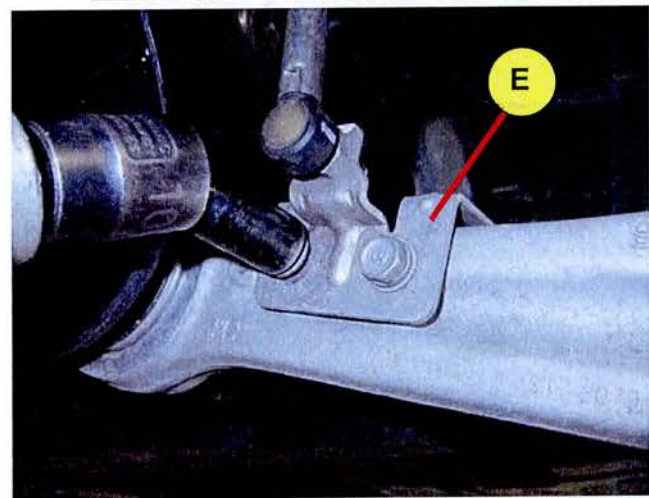
Tightening torque:
98.1~117.7 N.m (10~12 kgf.m,
72.3~86.8 lb-ft)



4. Remove the height sensor bracket from the lower control arm (E).

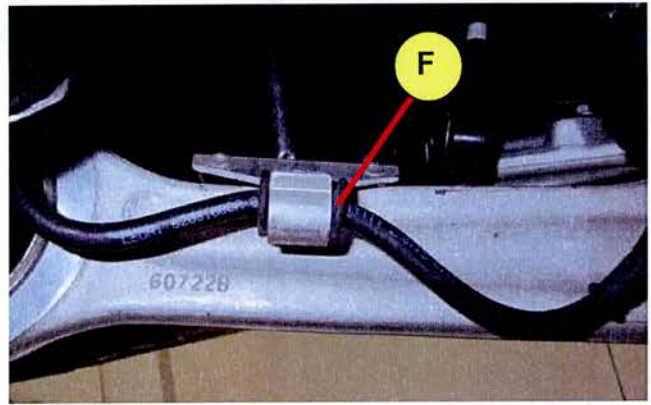
*** NOTE**

Tightening torque:
16.7~25.5 N.m (1.7~2.6 kgf.m,
12.3~18.8 lb-ft)



SUBJECT: VI EQUUS FRONT STRUT REPLACEMENT (SERVICE CAMPAIGN TL5)

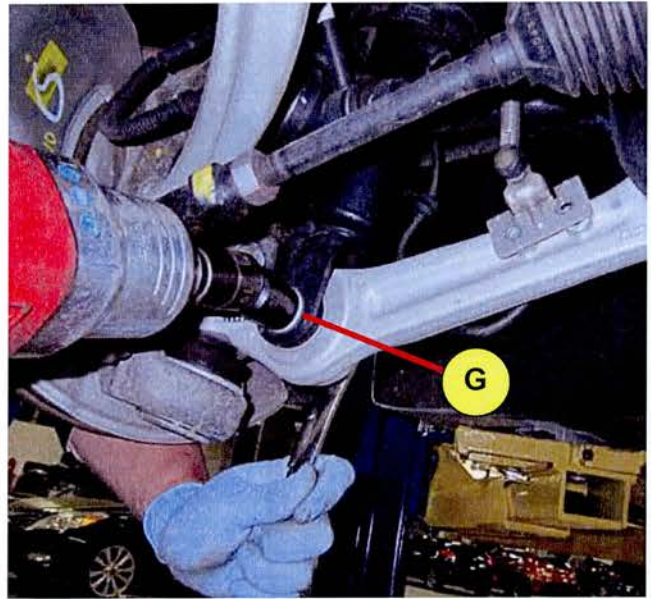
5. Remove the wire harness (F) from the mount of the height sensor bracket.



6. Unfasten and remove the nut and bolt (G) mounting the strut to the lower control arm.

*** NOTE**

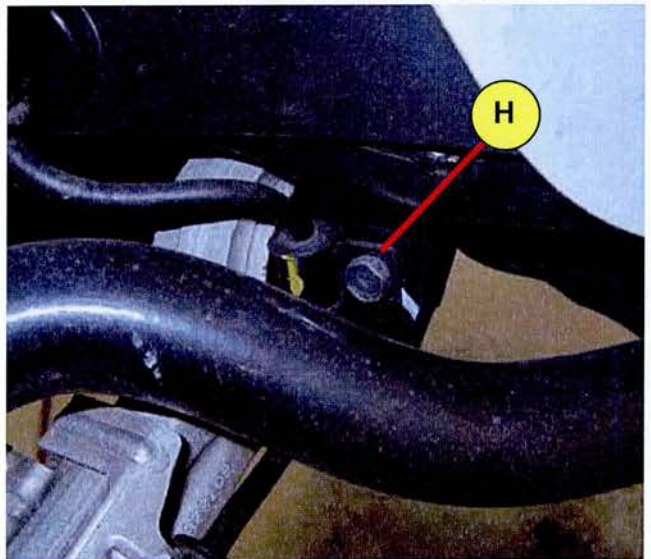
Tightening torque:
78.4~88.2 Nm (8~9 kgf.m, 57.8~65.0 lb-ft.)



7. Unfasten the strut wiring harness mounting bolt (H).

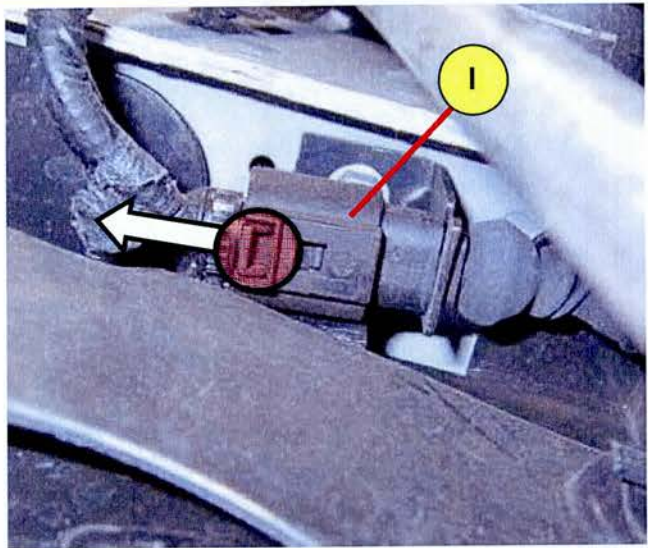
*** NOTE**

Tightening torque:
16.7~25.5 N.m (1.7~2.6 kgf.m,
12.3~18.8 lb-ft)

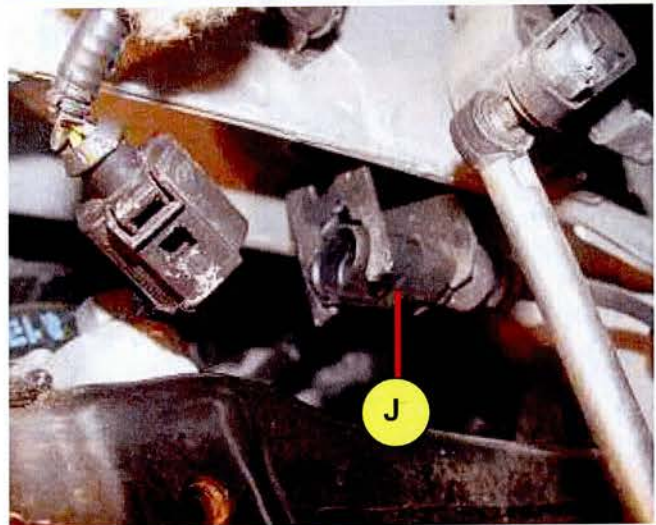


SUBJECT: VI EQUUS FRONT STRUT REPLACEMENT (SERVICE CAMPAIGN TL5)

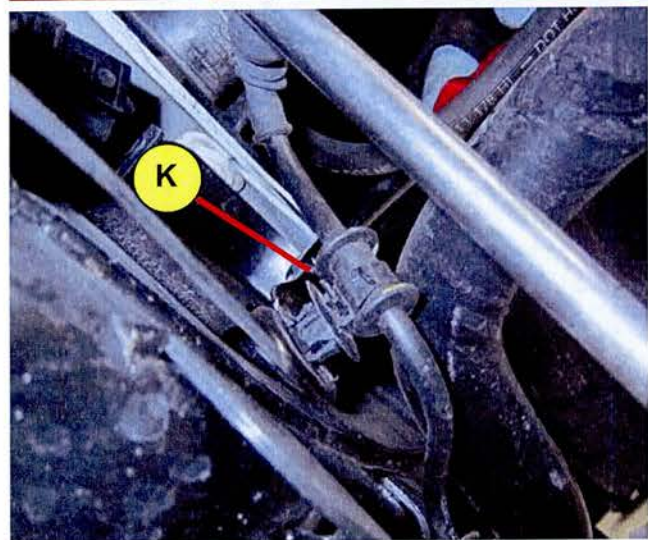
8. Release the lock tab by pulling outwards and disconnect the wire connector (I).



9. Rotate and pull the wire connector (J) out of the holder.

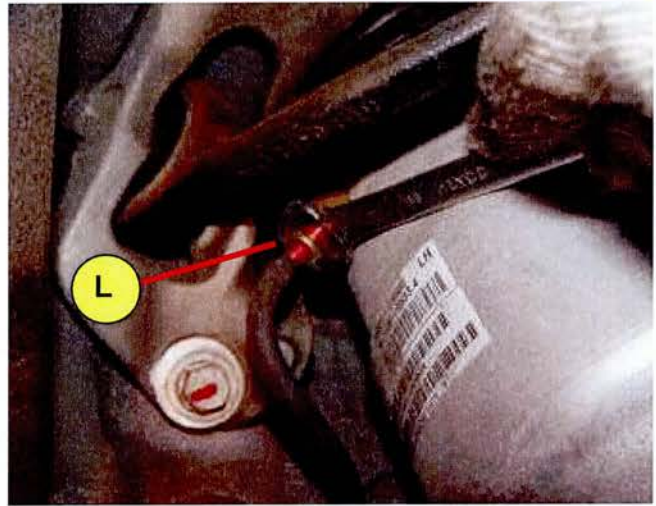


10. Remove strut wiring harness anchor (K).



SUBJECT: VI EQUUS FRONT STRUT REPLACEMENT (SERVICE CAMPAIGN TL5)

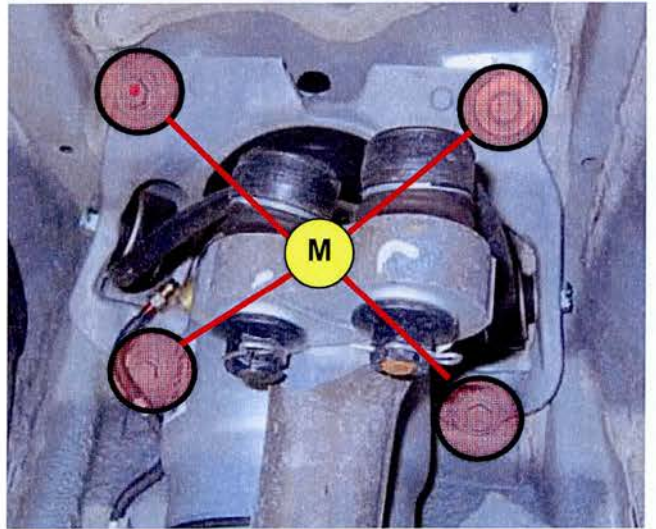
11. Loosen nut at the air valve (L) and disconnect the air hose from the strut.



12. Unfasten and remove the 4 bolts (M) mounting the strut plate to the vehicle.

*** NOTE**

Tightening torque:
53.9~63.7 Nm (5.5~6.5 kgf.m,
39.8~47.0 lb-ft.)



SUBJECT: VI EQUUS FRONT STRUT REPLACEMENT (SERVICE CAMPAIGN TL5)

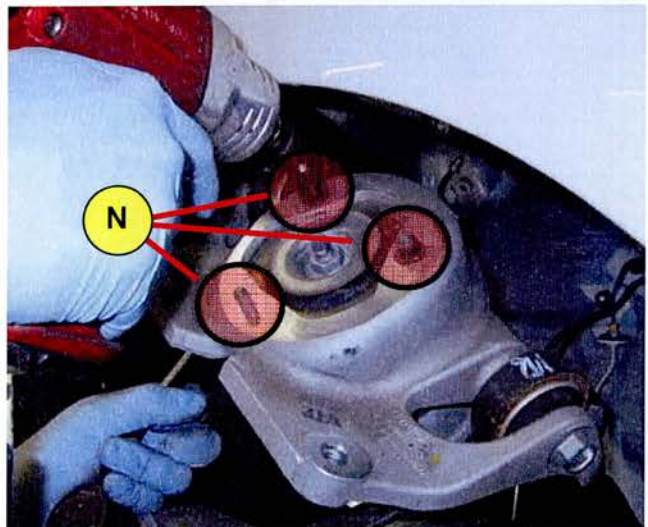
13. Pull the strut plate off the dowel guides to expose the nuts at the top of the strut.



14. Unfasten and remove the 3 strut top mounting nuts (N).

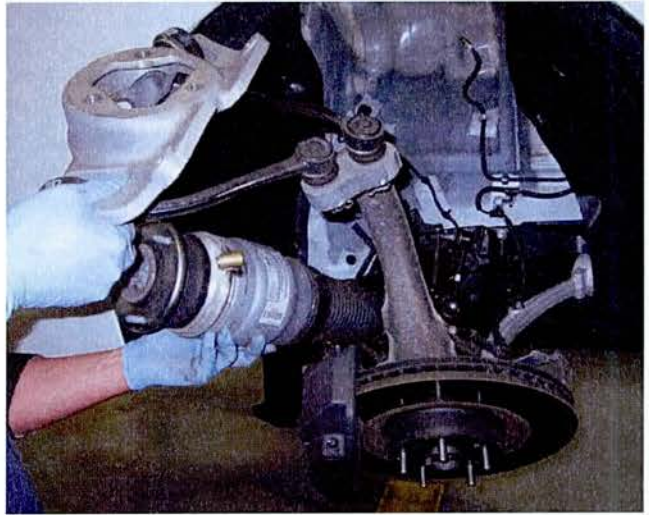
*** NOTE**

Tightening torque:
20~25 Nm (2.0~2.5 kgf.m, 14.0~18.0 lb-ft.)



SUBJECT: VI EQUUS FRONT STRUT REPLACEMENT (SERVICE CAMPAIGN TL5)

15. Separate the strut from the mounting plate and remove the strut assembly from the vehicle.



16. Install the new part in reverse order of removal.
17. Repeat steps 1-16 for the other side of the vehicle.

★ IMPORTANT

After installing the new parts, air must be filled in the suspension system and the height sensors must be calibrated. Follow the procedures described in TSB #12-SS-003.

18. Perform a front end alignment to set toe adjustment.
- Refer to the appropriate shop manual for specs and service procedure.