



This document replaces the entire procedure in PI0815 dated 2.2013.

Date	Group	No.	Release	Page
6.2013	652	005	2	1(3)

SB-10051572-7427

PI0815, Rear Suspension Hardware Torque
LEU, MRU, CHU, CXU, GU, TD

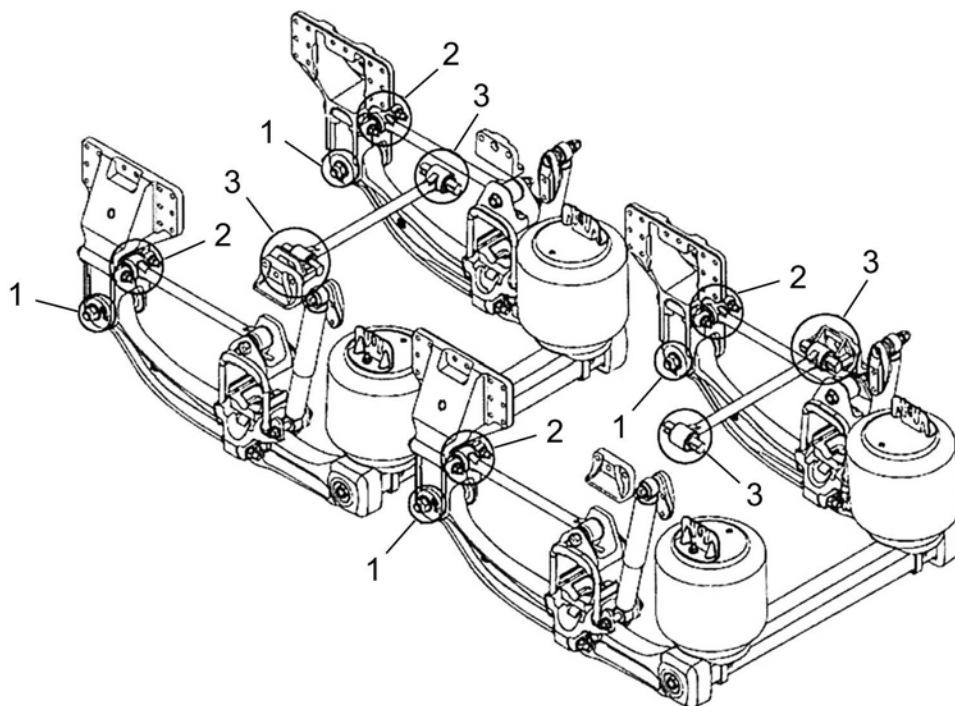
PI0815, Rear Suspension Hardware Torque

(June 2013)

It has been discovered on certain Mack trucks that bolts are loose or incorrectly torqued on the PRIMAAAX suspension. The solution is to apply the correct torque from beam to hanger bolts, torque rod bolts - lateral and fore and aft.

Repair Procedure

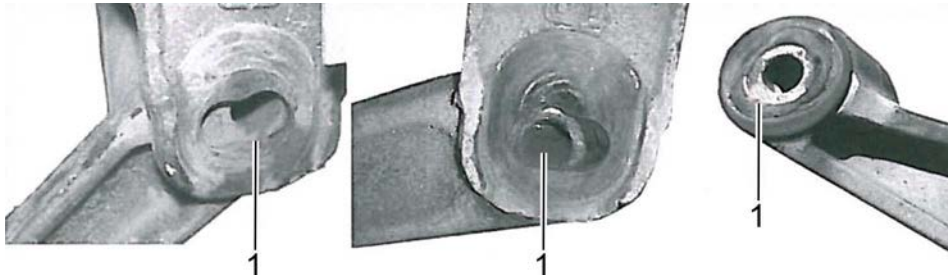
You must read and understand the precautions and guidelines in Service Information, Group 60, "General Safety Practices, Wheel Suspension and Steering" before performing this procedure. If you are not properly trained and certified in this procedure, ask your supervisor for training before you perform it.



W6082541

- 1 QUIK-ALIGN® Connection: 745 ± 35 Nm (550 ± 26 ft-lb)
- 2 Fore-aft Torque Rod: 320 ± 50 Nm (236 ± 37 ft-lb)
- 3 Transverse Torque Rod (Axle and Frame Connection): 275 ± 25 Nm (203 ± 18 ft-lb)

Inspect for Indications of a Loose Joint



W6082340

1 Loose joint

Inspect the inside of the frame hanger legs and the QUICK-ALIGN® collars. If any of the following are present, the pivot bushing and one or more of the mating components may require replacement:

- Evidence of wear marks on the inside of the frame hanger legs indicating metal to metal contact or movement.
- The snout of the QUICK-ALIGN® concentric or eccentric collar is elongated or damaged.

Check the suspension alignment and adjust if necessary.

Repair Procedure

Quik-Align Pivot Bolt

- 1 Check both rear thrust angle alignments and adjust as required.
- 2 Inspect the QUICK-ALIGN® fastener on each support beam assembly for proper torque: 745 ± 35 Nm (550 ± 26 ft-lb).
- 3 If the fasteners are loose, inspect the frame hanger and mating components for wear or damage (see graphic).
- 4 If the frame hanger or mating components are worn or damaged they must be replaced.
- 5 Replace any loose fasteners.

Fore-Aft Torque Rod

- 1 Inspect the two fasteners (torque rod to frame hanger) on each fore-aft torque rod for proper torque: 320 ± 50 Nm (236 ± 37 ft-lb).
- 2 If the fasteners are loose, inspect the torque rod and mating components for wear or damage.
- 3 If the torque rod or mating components are worn or damaged they should be replaced.
- 4 Replace any loose fasteners.

Transverse Torque Rod

- 1 Inspect the four fasteners on each transverse torque rod for proper torque: 275 ± 25 Nm (203 ± 18 ft-lb).
- 2 If the fasteners are loose, inspect the torque rod and mating components for wear or damage.
- 3 If the torque rod or mating components are worn or damaged they should be replaced.
- 4 Replace any loose fasteners.

Reimbursement

This repair is covered by an authorized Service Program. Reimbursement is obtained via the normal claim handling process.	
Claim Type (used only when uploading from the Dealer Bus. Sys.)	B
Recall Status	
Vehicle inspected, repair not required	1- Inspected OK
Vehicle repaired per instruction	2- Modified per instruction
Labor Code	
Primary Labor Code	1352H-01-96 1.2 hrs
Time to take charge and determine campaign status	101AA-0A-00 — 0.3 hrs.
Causal Part	20760814
Parts Disposition	
Authorization Number	PI0815
Expiration Date	30 SEPTEMBER 2013