



SERVICE INFORMATION BULLETIN

Bulletin Number: 13-002 Models: FE/FG Issue Date: October 2013 Page 1 of 16

NOTE: The information contained in this document is intended for use by trained, professional technicians with the knowledge, tools and equipment to properly and safely perform diagnoses and repairs. It informs service technicians about conditions that may occur in some vehicles, or provides information that could assist in proper vehicle diagnosis, service, or repair, and does not indicate that a defect is present. DO NOT assume that a symptom or condition, or a described cause of a symptom or condition, affects any particular vehicle or that a described repair applies to any particular vehicle. There can be multiple causes resulting in the same symptoms or conditions, and trained professional service technicians must use their diagnostic skills to make evaluations on a case-by-case basis.

SUBJECT:
Canter Center Fuel Tank Removal Instructions

POTENTIALLY AFFECTED MODELS:
2012-2014 model year Canter vehicles produced prior to August 1, 2013.

DESCRIPTION:
Attached are instructions to assist technicians in removing and installing a center fuel tank in Canter vehicles.

Please initial and route to the following personnel before filing.											
Service Mgr.		Warranty Mgr.		Service Technicians - Initial in boxes below.							
Shop Foreman		Parts Mgr.									



Canter Center Fuel Tank Removal Instructions

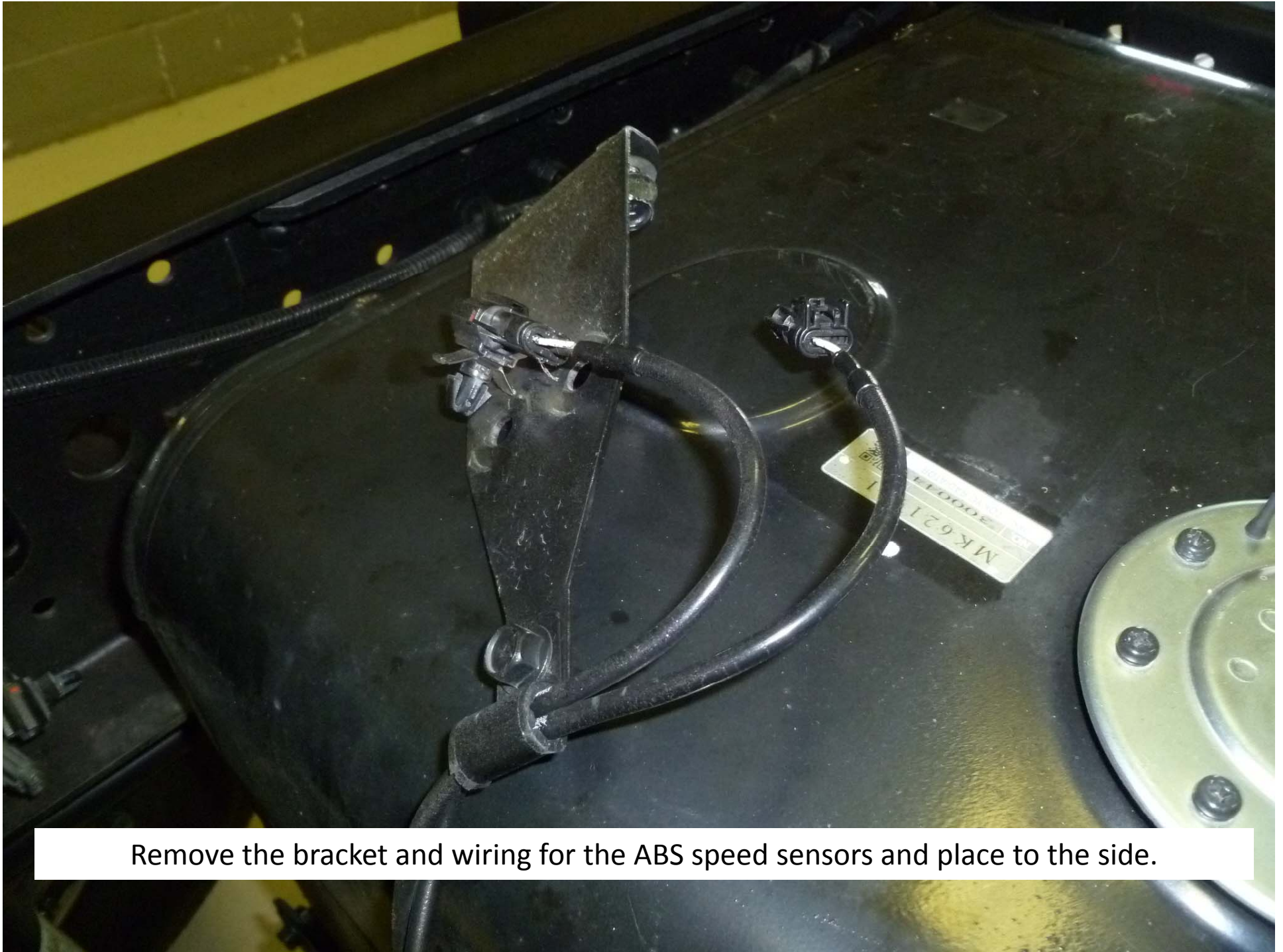
REPAIR PROCEDURE:

1. Park the vehicle on a flat, level surface, turn off the engine, fully apply the parking brake and chock the **FRONT** wheels.

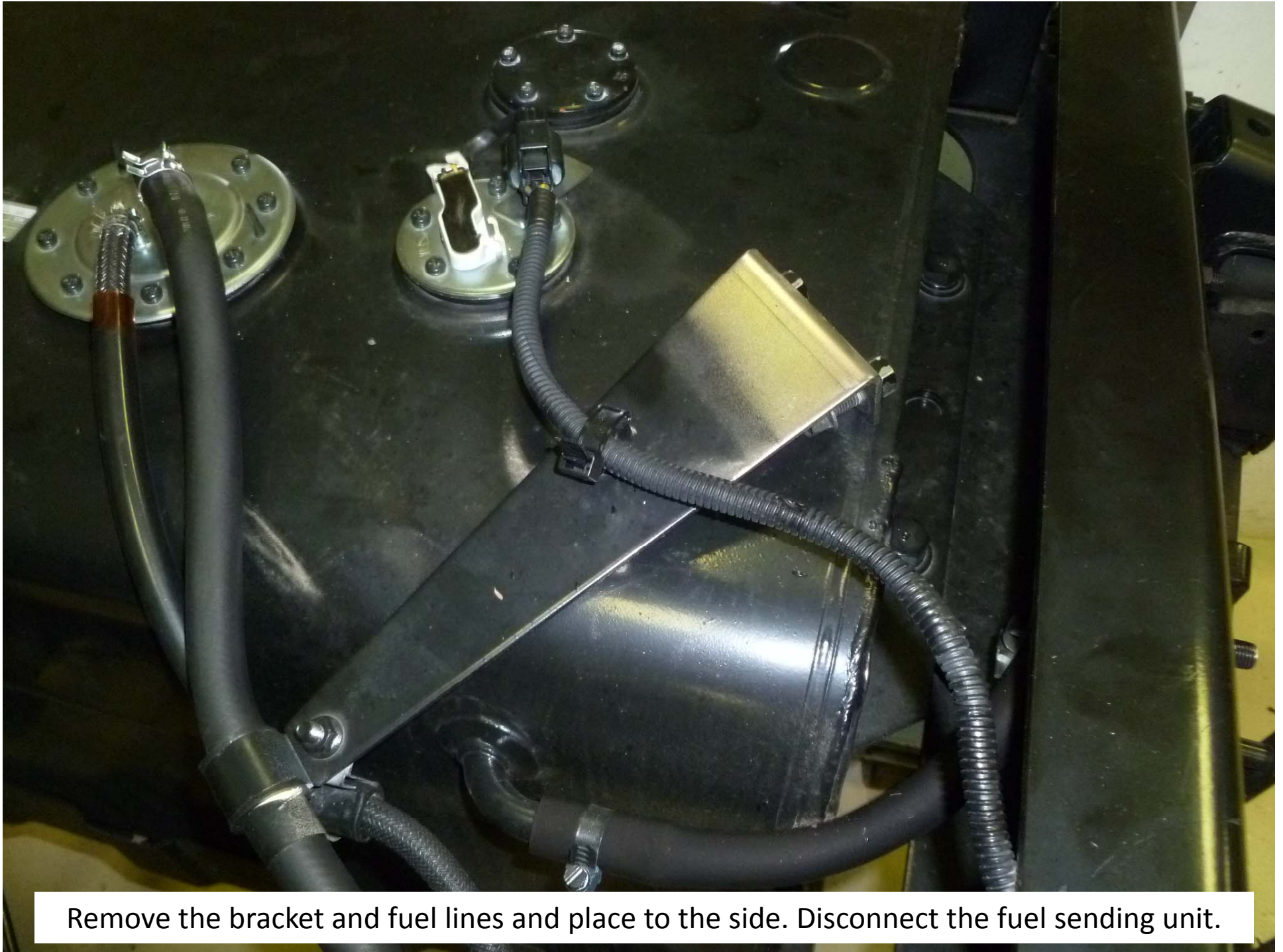
CAUTION! Do not remove the wheel chocks until all work has been completed.

2. Disconnect the negative battery cable.
3. Drain the fuel from the tank using an appropriate container(s).
4. Following the instructions below, remove the fuel tank from the vehicle.

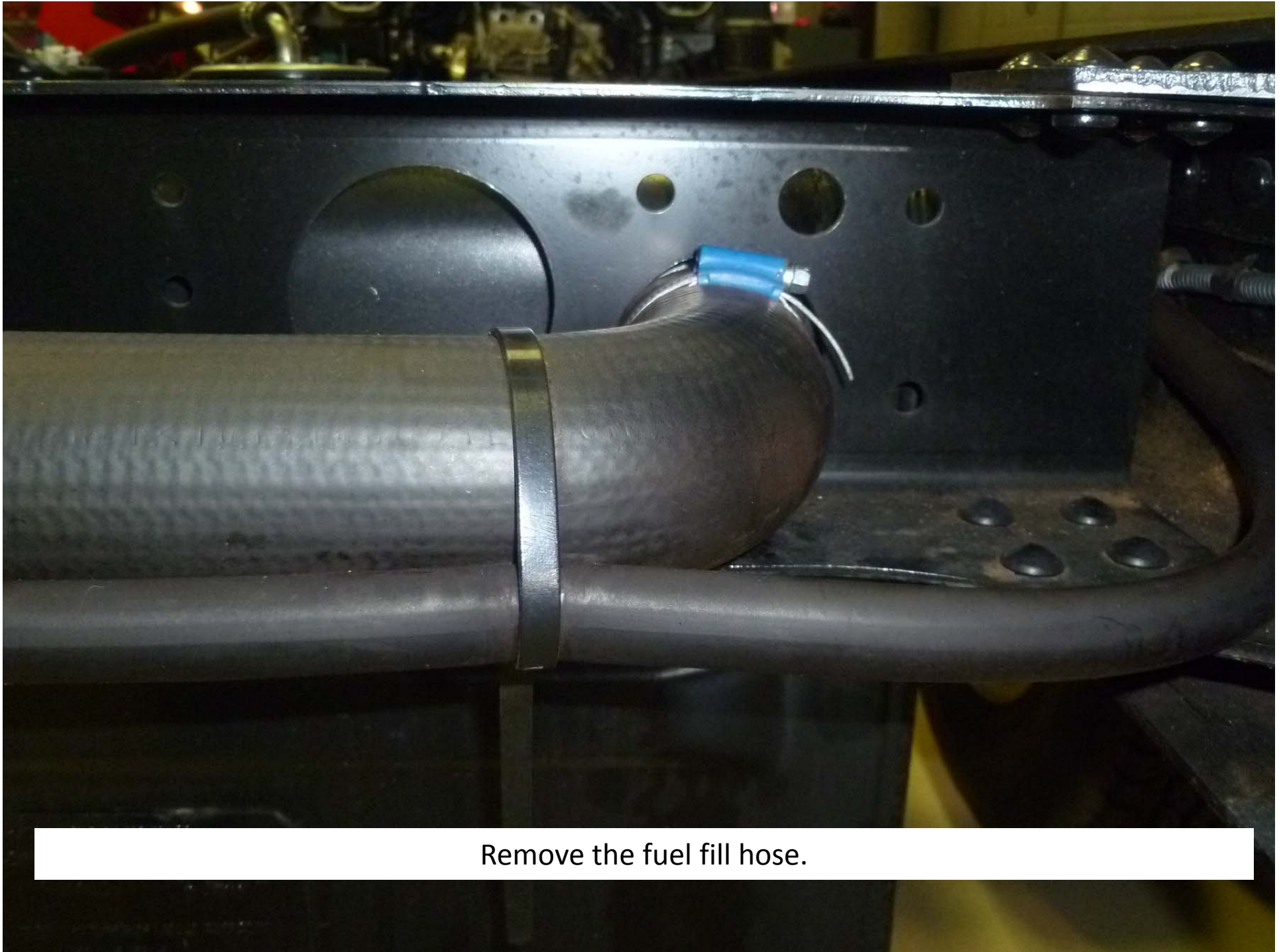
NOTE: It is not necessary to remove the rivets and brackets that the fuel tank is secured to for removal of the tank. In most cases, the tank should have sufficient clearance for removal from the vehicle following this procedure.



Remove the bracket and wiring for the ABS speed sensors and place to the side.



Remove the bracket and fuel lines and place to the side. Disconnect the fuel sending unit.



Remove the fuel fill hose.



Remove the retaining bolts from both sides of the fuel tank.



Remove the shock absorbers and anti-sway bar, if equipped.



Raise the vehicle by the frame, allowing the rear differential housing to hang from the leaf springs. Support the vehicle with suitable jack stands under the frame.



Slide the fuel tank forward and roll the front of the tank downward.



Roll the front of the tank downward to remove from vehicle.



Approximately 6 inches of clearance from the body of vehicle is needed to remove the tank.



If additional clearance is needed to remove the tank, support the rear differential housing with a suitable jack. Remove the upper spring pins on both left and right sides. Lower the rear differential housing until the needed clearance is obtained for the fuel tank to clear the rear differential housing.

CAUTION! It may be necessary to disconnect the rear brake hoses at this time to prevent damage to the hoses.



Remove the tank from under the vehicle.

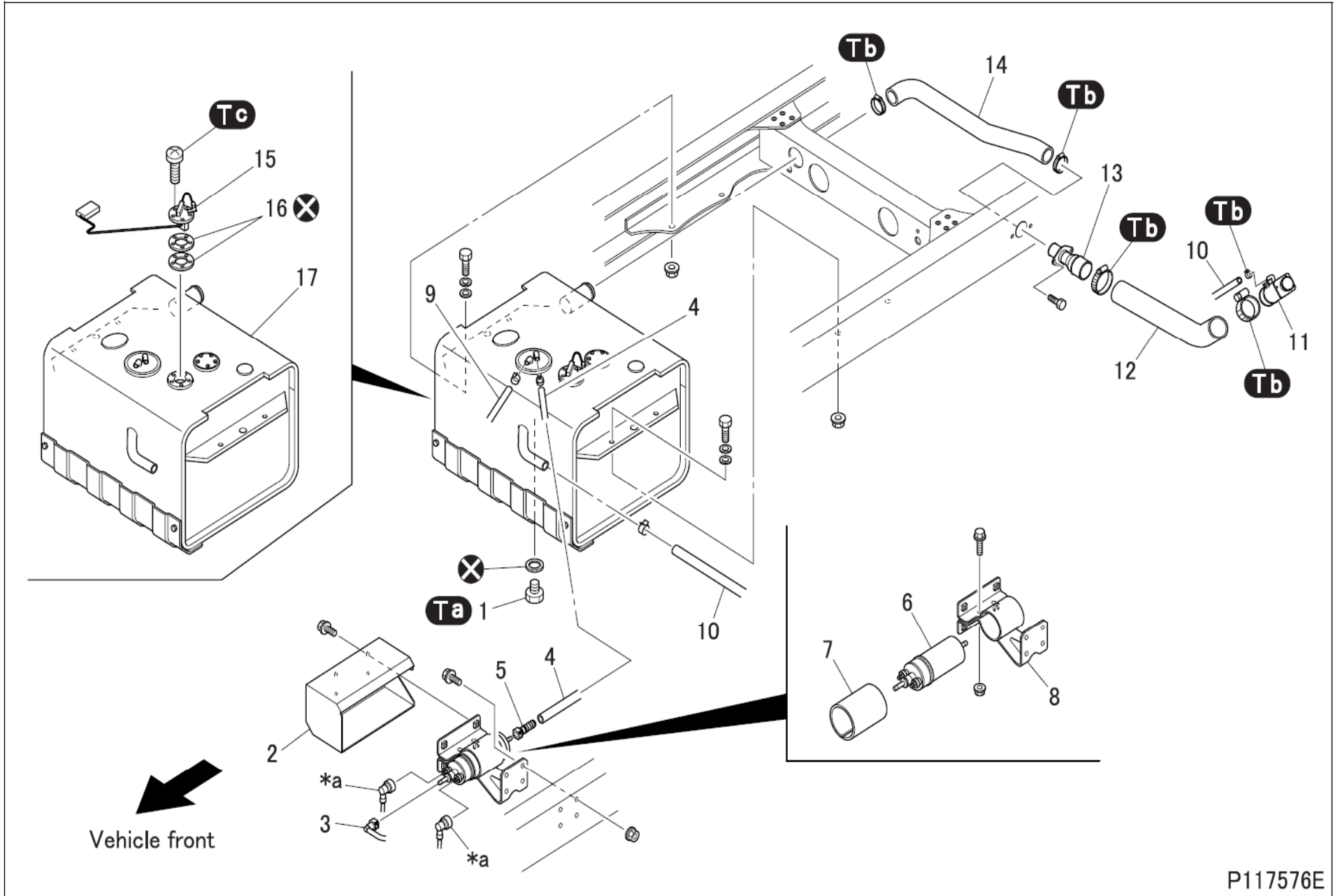


Canter Center Fuel Tank Installation Instructions

To install the tank, follow the removal instructions in reverse order.

Tighten all fasteners to their proper torque specifications.

If the rear brake hoses were removed during this procedure, follow the instructions in group 35 of the service manual for bleeding the brake system.



● Removal sequence

- | | | |
|-------------------|---------------------|-----------------------|
| 1 Drain plug | 8 Fuel pump bracket | 15 Fuel lever sensor |
| 2 Fuel pump cover | 9 Return hose | 16 Gasket |
| 3 Fuel tube | 10 Air vent tube | 17 Fuel tank |
| 4 Suction hose | 11 End filler | |
| 5 Connector | 12 Fuel hose | *a: Harness connector |
| 6 Fuel pump | 13 Fuel pipe | ⊗: Non-reusable parts |
| 7 Rubber | 14 Fuel hose | |

DANGER

- Do not allow any flames or sources of heat near the fuel tank and fuel pump, as it may explode.

WARNING

- Fuel is highly flammable. Keep it away from flames and sources of heat.
- To avoid risk of fire, wipe up any spilled fuel.

Tightening torque (Unit: N·m {ft.lbs, kgf·m})

Mark	Parts to be tightened	Tightening torque	Remarks
Ta	Drain plug	29.4 ± 4.9 {22 ± 3.6, 3.0 ± 0.5}	–
Tb	Clamp	3.9 ± 1.0 {2.9 ± 0.7, 0.4 ± 0.1}	–
Tc	Screw (fuel level sensor mounting)	1.0 to 2.5 {0.7 to 1.8, 0.1 to 0.25}	–