



# SB-10054878-1530 TECHNICAL SERVICE BULLETIN

TSB#: 14-005

Job Code: 9801162

Flat Rate:

Inspection ONLY: 0.15 hour

Inspection and repair: 0.75 hour

**NOTE: This Technical Service Bulletin will be valid within (1) year from the original date of publication. REQUIRES PARTS TO BE ORDERED FROM Jayco for every unit.**

**ACTION REQUIRED:** Inspect for power cord box. If missing, install box.  
NOTE: Applies only to 30 AMP units.

## MODELS / UNITS:

### 2014 Eagle Travel Trailer

324BHTS **E1CY** 0053, 0055-0057, 0059-0060, 0062, 0065-0068, 0070, 0077, 0080-0081, 0083-0084

## KIT CONTENTS

Note: Kit can only be ordered using the order form included with this bulletin.

- (1) Power cord box
- (1) Instruction sheet

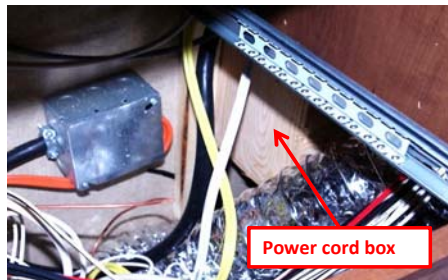
## TOOLS/MATERIAL REQ.:

Screw gun w/square head bit

## INSTRUCTIONS

### Inspect to see if power cord box exists

- The power cord box should be located in the rear of the unit, behind the furnace. Locate the furnace grill, and remove the bottom drawer to the left of the grill. If there is a power cord box, it will be visible in right corner below the bottom drawer.



If there is a power cord box, no other action is required. If box is missing, proceed to Step 2.

### Installing the power cord box

- Remove the exterior furnace vent. To remove the vent, remove the screws, set aside for re-use. Gently pry the vent loose from the wall. Pull the vent out of the wall and set aside.

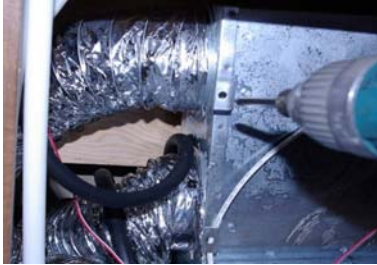


- Remove the interior furnace grill by removing the screws on both sides of the grill. Set the screws and grill aside for re-use.





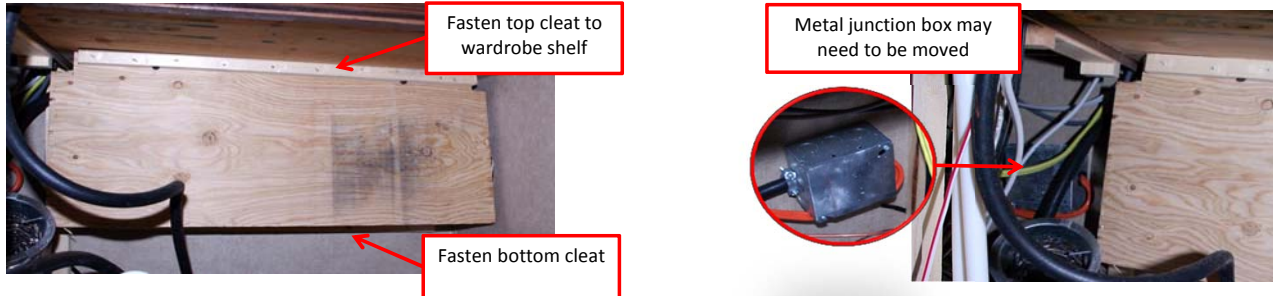
- Loosen and remove the (4) heat hoses from the furnace.



- Remove the bottom and side screw from the furnace. Slide the furnace out of the cabinet.



- Insert the power cord box into the cabinet base. Using 1-1/2" screws, fasten the cleat on the top of the box to the bottom of the wardrobe shelf. Fasten the cleat on the bottom of the box to the rear wall. **NOTE: recommend minimum of 4 screws per cleat.**  
**NOTE: It may be necessary to move the metal junction box to the (left) side before installing the power cord box.**



- Slide the furnace back into the wardrobe base. Re-install the side and bottom screw(s). Hook up the (4) furnace hoses. Inspect all furnace connections and wiring in the compartment to make sure they are not pinched or constricted. Re-install the grill.
- Re-install the exterior furnace vent. Inspect the sealant on the vent and repair any voids or damage to the sealant.