




3

WARRANTY
CAMPAIGN

ROADSTER
WARRANTY
Bulletin



CAUTION: All involved customers must be notified, all involved units must be corrected as per instructions herein.

Campaign no.: 2011-0016
2012-0006

June 19th, 2012

Subject: **TO BE PERFORMED AT PDI ON
UNREGISTERED (UNSOLD) VEHICLES**

- 1- Updated Throttle Body Actuator Protection
- 2- ECM and TCM Software Updates
- 3- Middle Side Panel Grommet Replacement (2011 Models Only)

No. **2012-8**
REVISION 1
January 23, 2014

▶ TEXT(S) BETWEEN ARROWS IS (ARE) MODIFIED ELEMENT(S) TO THE PREVIOUS PUBLICATION. ◀			
YEAR	MODEL	MODEL NUMBER	SERIAL NUMBER
2011	Spyder RT SM5 and SE5	All	▶ See attached list ◀
2012			

PROBLEM

Problem 1

In some conditions, the throttle body actuator could get damaged, which could lead to fault codes or limp home mode when trying to start the engine.

Problem 2

Too frequent warning display in cluster due to sensitive calibration.

Problem 3

On some 2011 vehicles, on which *2011-8 OR 2011-13 WARRANTY CAMPAIGNS* has not been performed, one of the middle side panels rubber grommets might fall off after multiple removal and installation of the panel.

SOLUTION

Solution 1 and 2

Update ECM and TCM with the latest softwares and calibrations.

IMPORTANT: This update must be done even if *WARRANTY CAMPAIGNS 2011-0008, 2011-0013 OR 2012-0004* have already been performed.

For more detailed explanations on the content of these updates, please refer to the *BRP KNOWLEDGE CENTER*. In the **keyword(s)** field, enter either the article number OR the title between quotes:

ARTICLE NUMBER	TITLE
31881	"Roadster TCM MY13 Calibration update"
31882	"Roadster June 2012 ECM update"

Solution 3

Install a NEW improved grommet if applicable.

REQUIRED PARTS

Required Parts for Procedure 1 and 2

► The following B.U.D.S. version is required and available on *KNOWLEDGE CENTER*:

B.U.D.S. - R3.5.1 (or newer) for Roadster - Single File

1. Click on "Advanced Search".
2. Select "Diagnostic Software".
3. In the Keyword(s) field, type in "R3.5.1".
4. "SEARCH".
5. Identify and download proper file.

Please note that you can also type in the keywords "R3.5.1" directly without going in the "Advanced Search". ◀

Required Parts for Procedure 3

PART	PART NUMBER	QUANTITY
Rubber grommet	705 003 264	2

NOTE: Order parts only if vehicle has to be repaired.

PROCEDURE 1 AND 2

Overview

The following will have to be done:

- Preparation
- ECM software update
- TCM software and calibration updates
- Updates validation
- ECM initialization
- Clearing faults

► Notes For The Module Updates

Four (4) update operations will be done as per table. ◀

MODULE	APPROXIMATE TIME FOR THE UPDATE
A) ECM software update	4-6 minutes
B) TCM software update	1-2 minutes
C) TCM calibration update (TCM MY13), first of 2 updates	1-2 minutes
D) TCM calibration update (TCM MY13), second of 2 updates	1-2 minutes

IMPORTANT: In case of problem updating a module, please consult the *BRP KNOWLEDGE CENTER*.

Preparation

Computer and Vehicle Preparation

NOTICE

Continuous power to the computer and to the vehicle is mandatory during this operation or damage to a module could occur.

Be sure to disable the computer screen saver.

If using a portable computer, be sure to provide a continuous supply of electrical power by connecting it to a wall outlet.

To ensure there is enough power to the vehicle electronic modules to complete the software updates, use a portable power pack.

NEVER use a battery charger instead of portable power pack. The battery charger may cause electrical noise causing problems during the update.

These software updates of the vehicle modules will take some time to complete and **MUST NOT** be interrupted.

Although computer screen may blank or may seem to freeze for a while, do **NOT** interrupt B.U.D.S. to allow updates to be completed. Do not touch the PC.

Although the cluster will blank, do **NOT** interrupt B.U.D.S. to allow updates to be completed. Do not touch the vehicle.

1. ► Place the vehicle on a level surface.
2. Install 4 wheel chocks (2 on each front wheel) to prevent any movements of the vehicle during the procedure.



WHEEL CHOCK INSTALLATION, EACH FRONT WHEEL

3. Set transmission to NEUTRAL.

NOTE: On SE5 models, the engine may need to be started to set transmission to "N". When done, stop engine.

4. RELEASE the parking brake.

5. Ensure trailer mode is deactivated (if applicable). Refer to *OPERATOR'S GUIDE*.

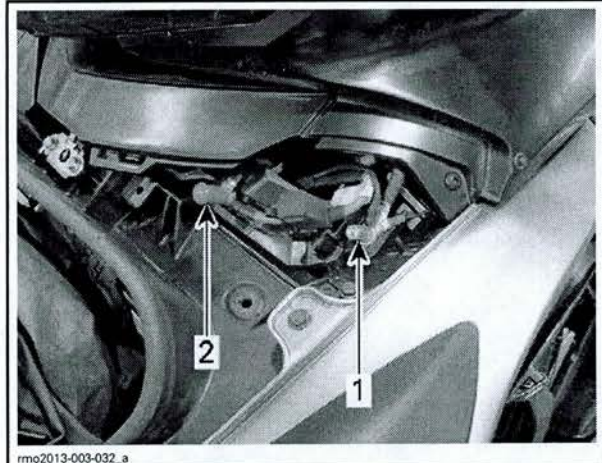
6. Ensure the vehicle battery is fully charged.

7. Connect a portable power pack (fully charged) to the vehicle battery.

NOTE: Depending on vehicle model and year of production, the portable power pack can be connected to the battery at one of the following three locations.



PORTABLE POWER PACK






CONNECTION AT JUMP START POSTS IN LH SERVICE CENTER, UNDER FRONT STORAGE COMPARTMENT COVER

1. **NEGATIVE (-) post**
2. **POSITIVE (+) post** ◀

B.U.D.S. Connections

1. Connect MPI before starting B.U.D.S. to ensure proper operation. Refer to the proper *SHOP MANUAL* for details:
 - Section 03: *ELECTRONIC MANAGEMENT SYSTEMS*
 - Subsection 03: *COMMUNICATION TOOLS AND B.U.D.S.*

MANDATORY TOOLS	
A personal computer (laptop or desktop)	
MPI-2 INTERFACE CARD (P/N 529 036 018)	
MPI-2 DIAGNOSTIC CABLE (P/N 710 000 851)	
OPTIONAL TOOL	
Extension cable available at electronic retail outlets. Do not exceed 7.5 m (25 ft)	

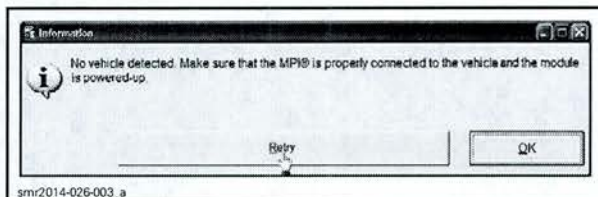
2. Start B.U.D.S. and logon.
3. Turn ignition key ON.



rnr2008-039-002

TYPICAL - IGNITION KEY ON

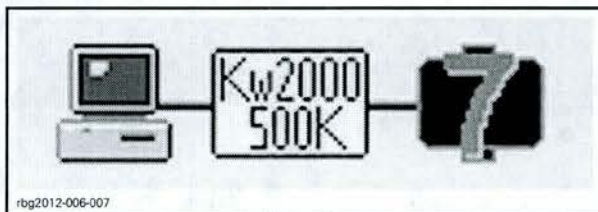
NOTE: If the following message does not automatically go away, click the **Retry** button.



smr2014-026-003_a

RETRY BUTTON

Compare number of modules shown in B.U.D.S. with following table. ◀



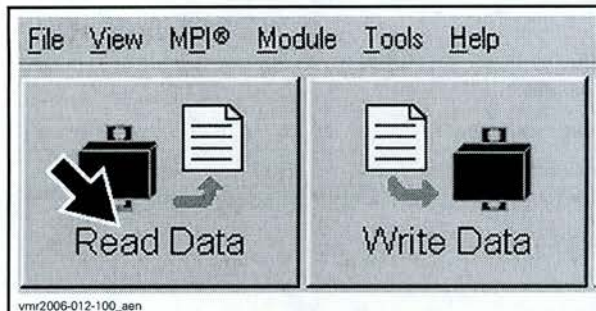
rbg2012-006-007

EXAMPLE

MODEL	NUMBER OF MODULES CONNECTED
SM5	6
SE5	7

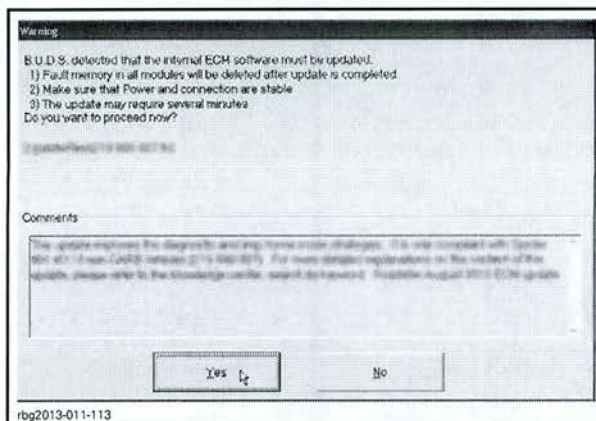
A) ECM Software Update

1. Click on Read Data.



vnr2006-012-100_aen

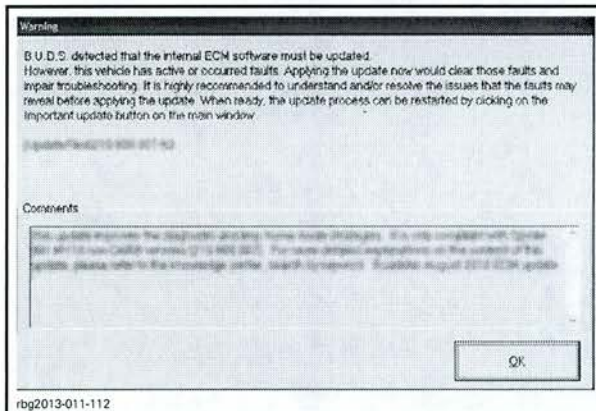
2. When the following message appears, click "Yes" to start the update.



rbg2013-011-113

ECM UPDATE CONFIRMATION - CLICK YES

3. If the following message appears, then there is "Active" or "Occurred" fault(s).



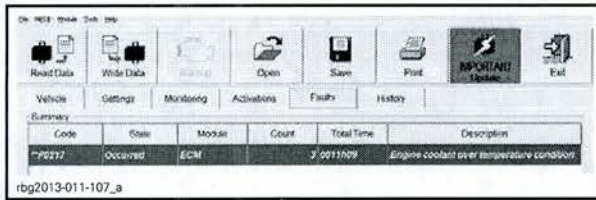
rbg2013-011-112

3.1 Clicking "OK" will prompt you to the **FAULT** screen.

3.2 Before proceeding with the update, fault codes relating to a current customer complain should be repaired; all other fault codes should be cleared.

3.3 Click on "IMPORTANT Update" to launch the update process.

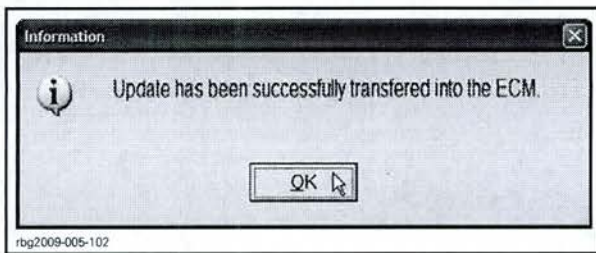
NOTE: The following top menu button will continue to flash until the ECM software update is performed.



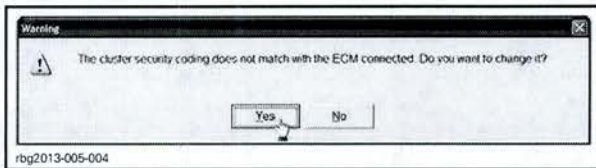
ECM SOFTWARE IMPORTANT UPDATE REMINDER

ECM Software Update continued

NOTICE While the ECM is being updated, an hour glass will appear on the computer. The computer screen and cluster might also go blank. **DO NOT TOUCH ANYTHING** (PC and vehicle) until the following message appears. Then, click the "OK" button.

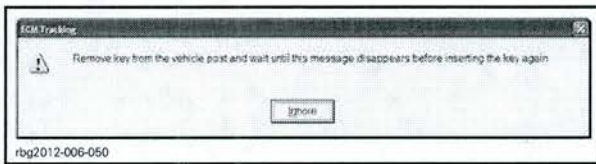


4. When the following message appears, click "Yes".

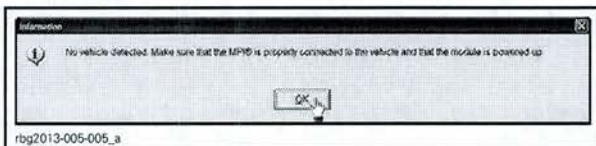


CLUSTER SECURITY MATCHING REQUEST - CLICK "YES"

- 5. When the following message appears:
 - 5.1 Turn ignition key to OFF.
 - 5.2 Wait until the message vanishes.



6. When the following message appears, turn ignition key to ON then click the "OK" button.



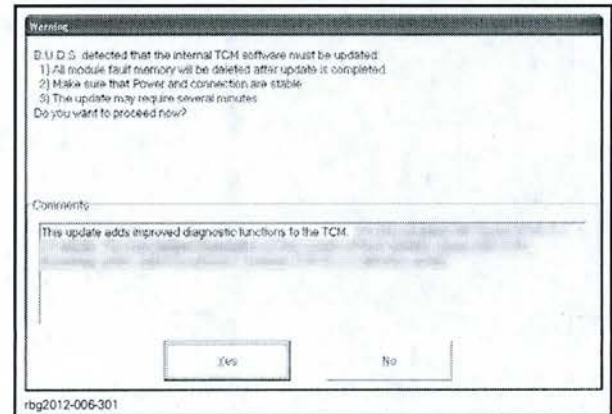
7. The ECM software update is completed.

TCM Updates

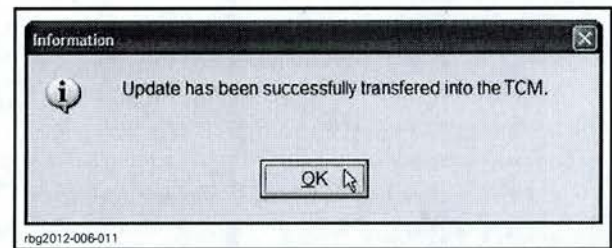
SE5 Models Only

B) TCM Software Update

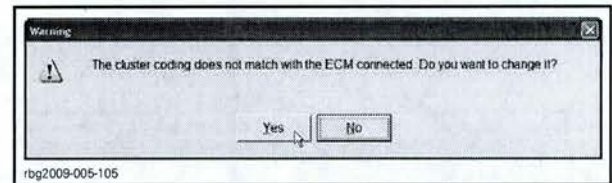
1. When the following message appears, click "Yes" to start the TCM update.



2. When the following message appears, click "OK".

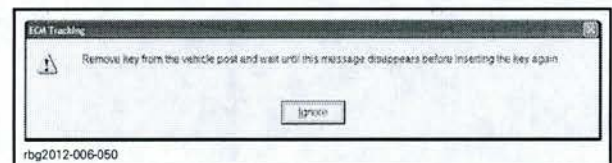


3. When the following message appears, click "Yes".

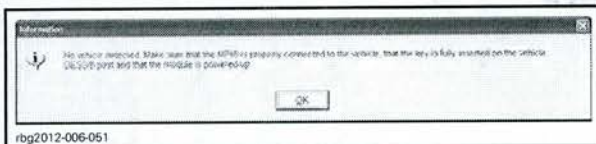


4. When the following message appears:

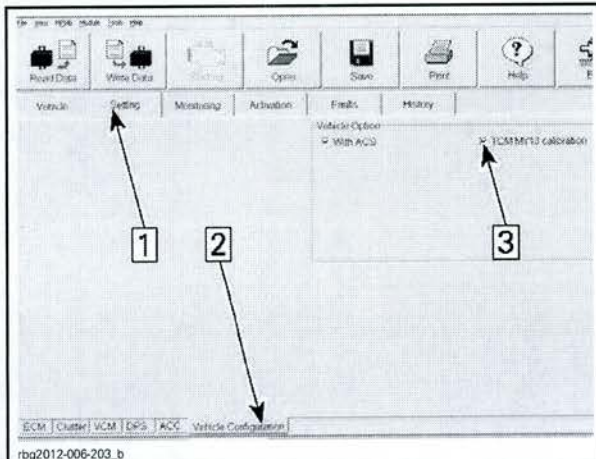
- 4.1 Turn ignition key to OFF.
- 4.2 Wait until the message vanishes.



5. When the following message appears, turn ignition key to ON then click the "OK" button.

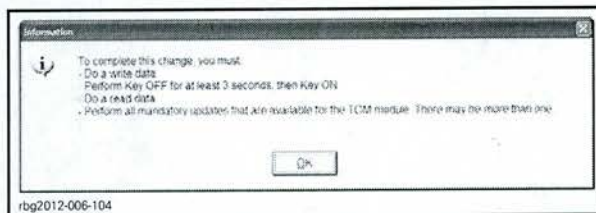


6. In B.U.D.S., click the items in the illustrated order.

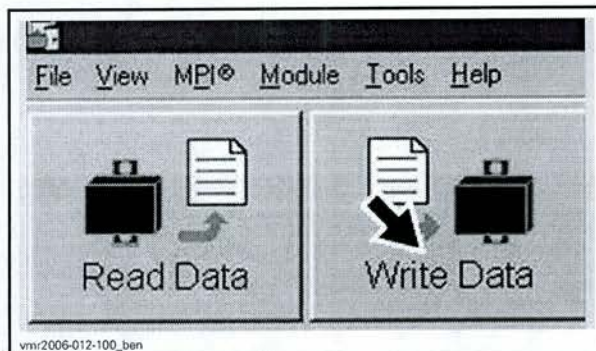


SELECTING TCM MY13 CALIBRATION
 Step 1: Settings
 Step 2: Vehicle configuration
 Step 3: SELECT TCM MY13 calibration

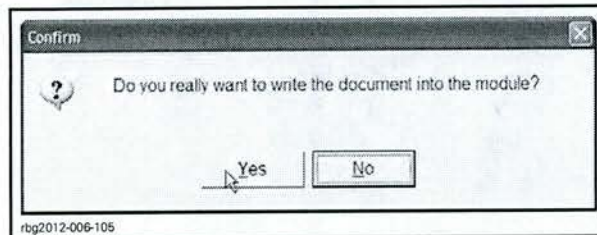
7. When the following box appear, click "OK".



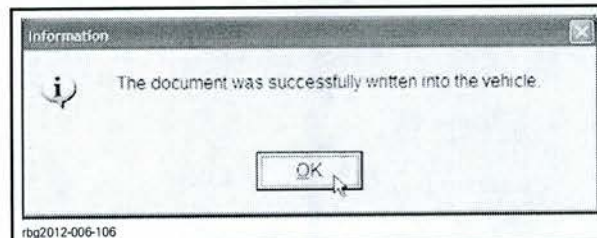
8. Click the Write Data button.



9. When the following message appear, click "Yes".



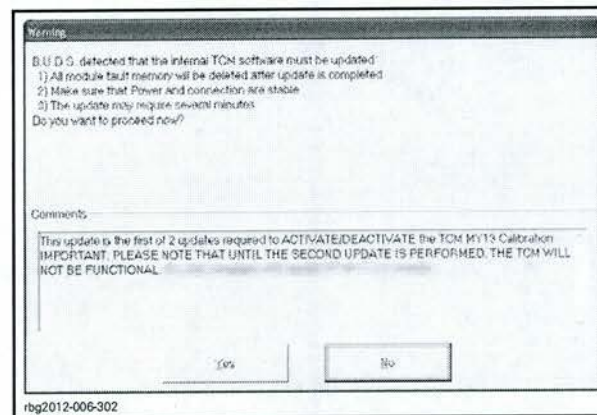
10. When the following message appear, click "OK".



11. Turn ignition key OFF.
12. Wait 3 seconds.
13. Turn ignition key ON.

C) TCM Calibration Udate (TCM MY13) 1 of 2 updates

1. Click on Read Data.
2. When the following message appears, click "Yes".

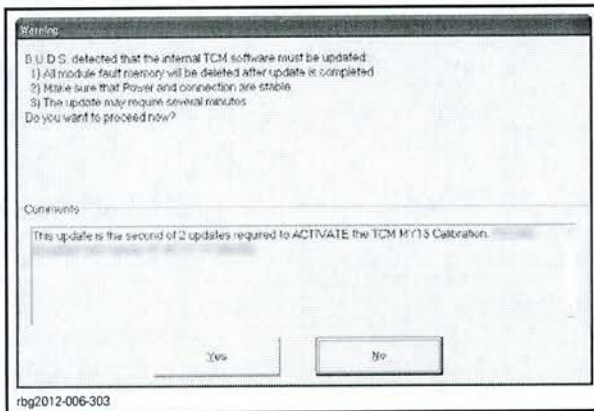


3. When the following message appear, click "OK".



D) TCM Calibration Udate (TCM MY13) 2 of 2 updates

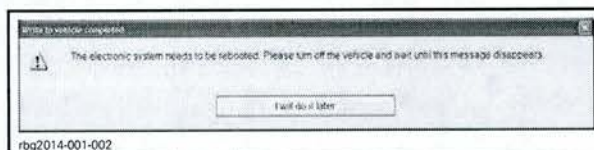
1. When the following message appears, click "Yes".



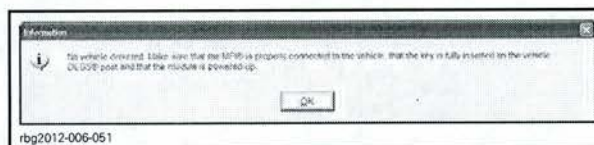
2. When the following message appears, click "OK".



3. When the following message appears:
 - 3.1 Turn ignition key to OFF.
 - 3.2 Wait until the message vanishes.



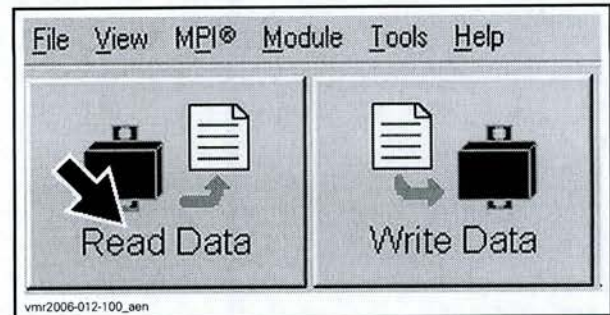
4. When the following message appears:
 - 4.1 Turn ignition key to ON.
 - 4.2 Wait until the message vanishes.



Update Validation

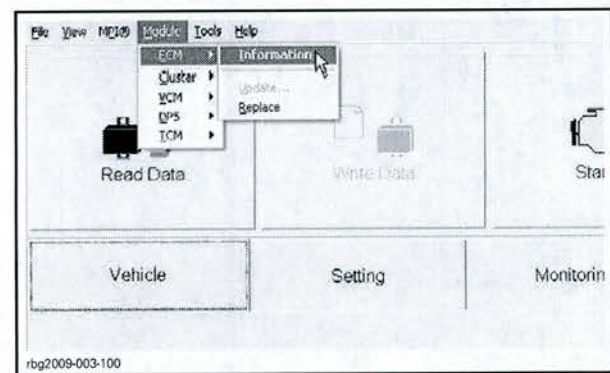
ECM

1. Click on Read Data button.



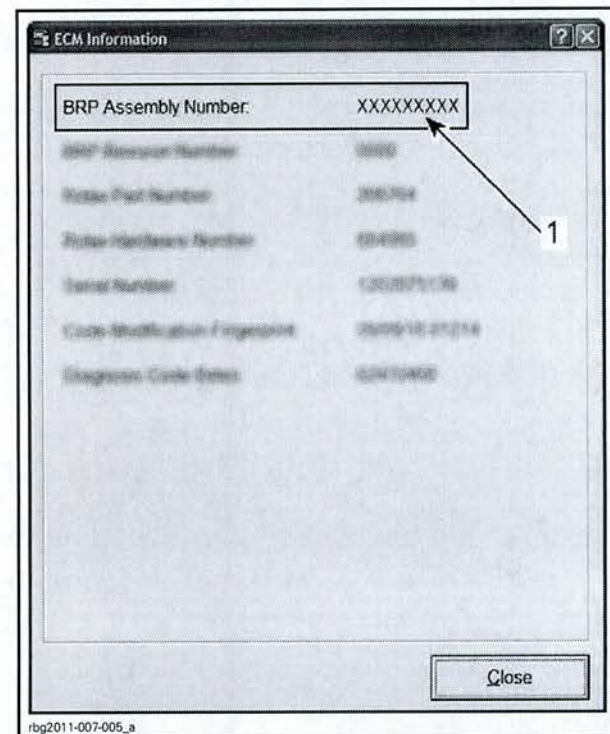
2. Check if the update has been successfully done by selecting:

- Module drop down list
- ECM
- Information



1. ECM module information

3. Look at the "BRP Assembly Number"



- TYPICAL
1. BRP Assembly number

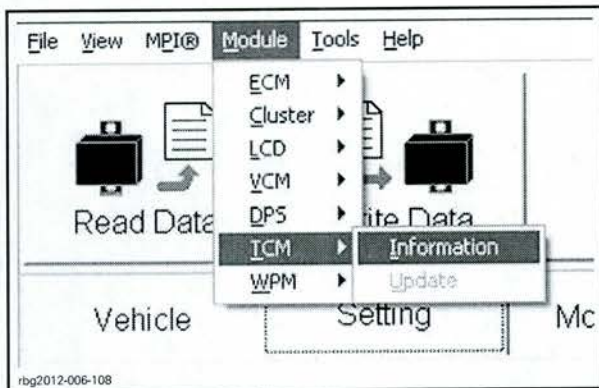
►ECM INFORMATION◀			
BRP assembly number	MY 2011 - 2012 non- CARB	SE5	420 666 567
		SM5	420 666 565
	MY 2012 CARB	SE5	420 666 498
		SM5	420 666 496

- If any number in the table is found in B.U.D.S., then the update was successful.
- If a wrong number is found, repeat the update procedure.

TCM

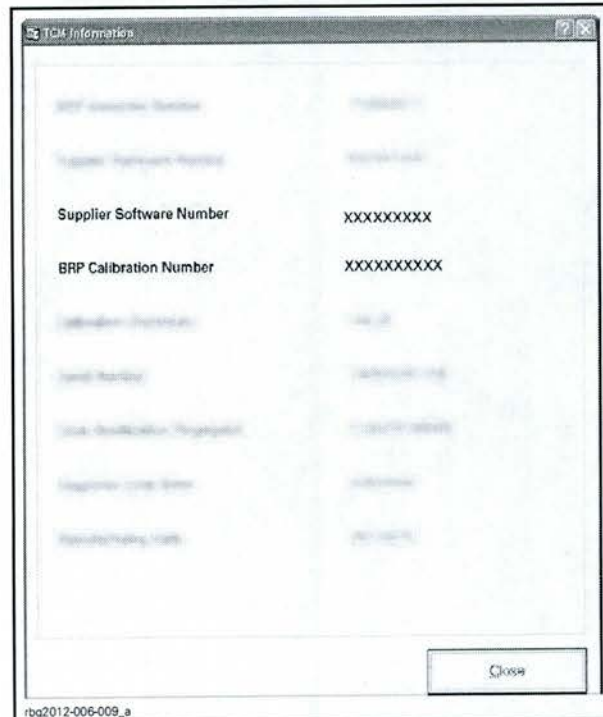
SE5 Models Only

- Check if the update has been successfully done by selecting:
 - Module drop down list
 - TCM
 - Information



1. TCM module information

- Look at the "Supplier Software Number" and the "BRP Calibration Number".



TCM INFORMATION

TCM INFORMATION		
INFORMATION ITEM		VALUE
Supplier Software Number		S01212D05
BRP Calibration Number	TCM MY13 updated (selected in B.U.D.S. vehicle configuration)	710003390

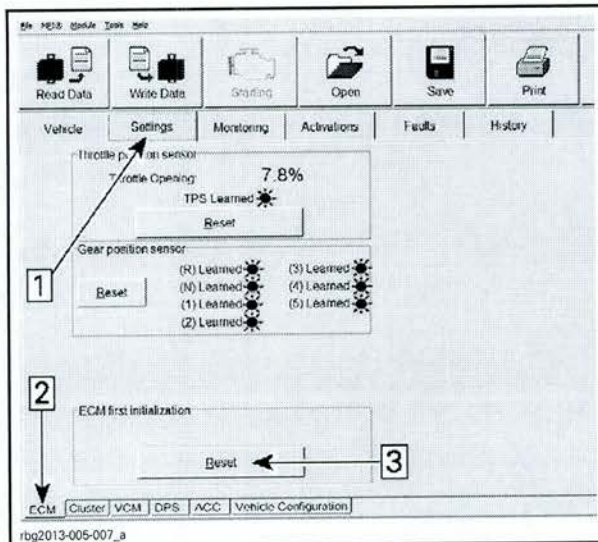
- If "Supplier Software Number" AND the "BRP Calibration Number" in the table are found in B.U.D.S., the update was successful.
- If a wrong number is found, repeat the update procedure.

►ECM Initialization◀

►IMPORTANT: Do not activate anything on the vehicle while performing a module reset.

ECM First Initialization

- In B.U.D.S., click the items in the illustrated order.



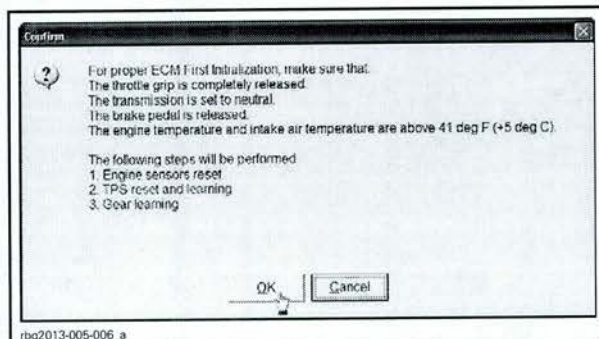
Step 1: Setting tab

Step 2: ECM tab

Step 3: Reset (ECM First Initialization)

2. When the following message appears:

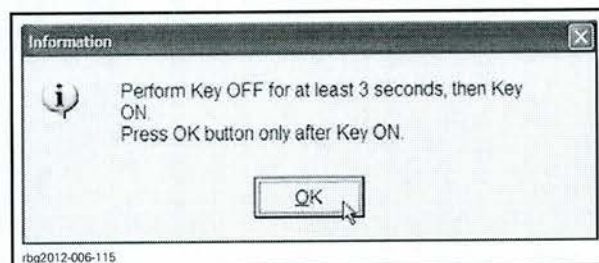
- 2.1 Follow on screen instructions.
- 2.2 Click "OK".



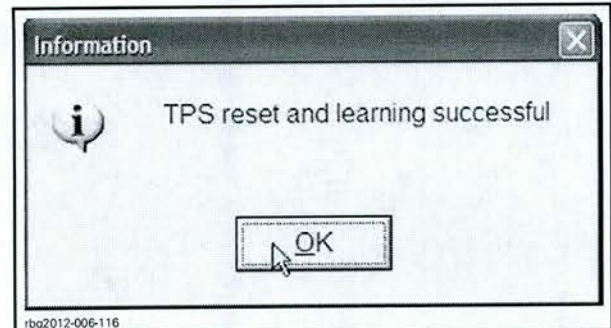
CLICK OK

3. When the following message appears:

- 3.1 Follow on screen instructions.
- 3.2 Click the "OK" button.



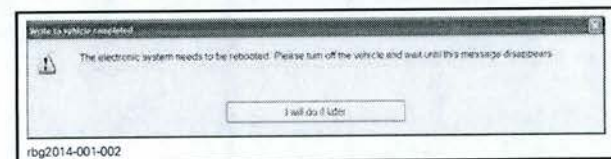
4. When the following message appears, click the "OK" button.



CLICK "OK"

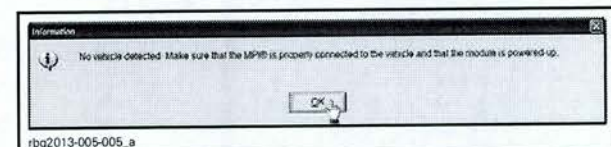
5. When the following message appears:

- 5.1 Turn ignition key to OFF.
- 5.2 Wait until the message vanishes.

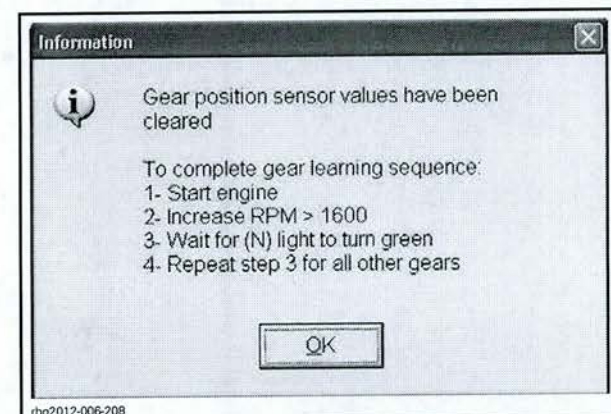


6. When the following message appears:

- 6.1 Turn ignition key to ON.
- 6.2 Wait until the message vanishes.

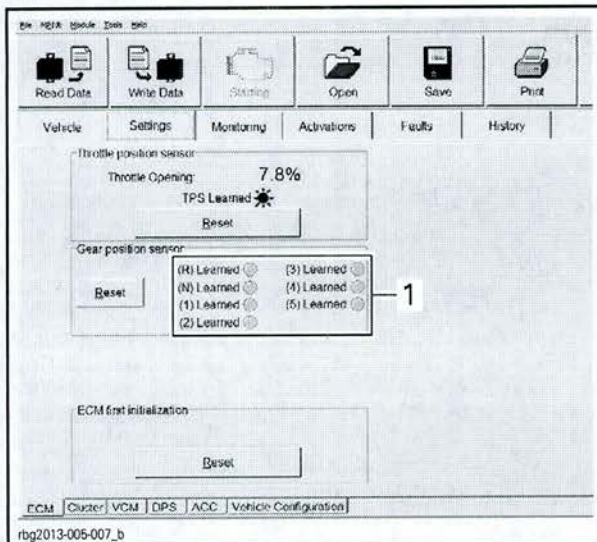


7. When the following message appears, click "OK".



CLICK "OK"

8. Ensure all the gear LEDs are OFF in B.U.D.S.



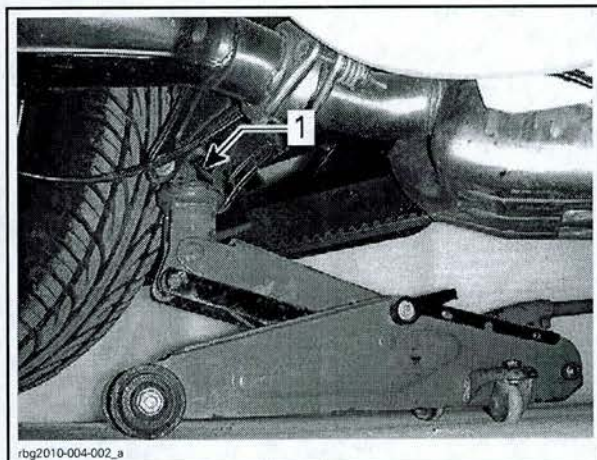
GEAR POSITION SENSOR LEADS

1. All the gear LEDs OFF

GBPS Learning

1. Position a floor jack under the lower portion of the rear shock absorber and lift the rear of vehicle until the rear wheel is off the ground.

NOTICE The floor jack must be positioned so that it cups the lower portion of the rear shock absorber.



1. Lower portion of shock absorber

⚠ WARNING

Before starting engine, ensure the rear tire is well off the ground and cannot come into contact with any obstacle (ground, jack stand, etc.). Keep hands, tools, feet and clothing clear of rotating parts (rear wheel assembly, drive belt). Ensure no one is standing in close proximity to the vehicle.

2. Start engine.

3. Run transmission through all gears (N, R, 1-2-3-4-5 and back to N) waiting until its LED turns green (in B.U.D.S.) before changing gear.

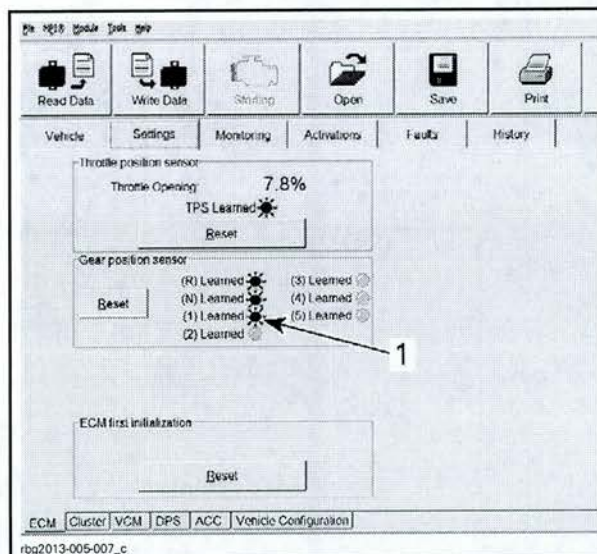
NOTE: On SM5 models, the clutch must be fully released for each gear.

NOTICE Apply brake to stop wheel before shifting from reverse to forward.

NOTE: Engine speed above 3000 RPM is required to shift forward gears.

⚠ CAUTION Do not exceed 3800 RPM.

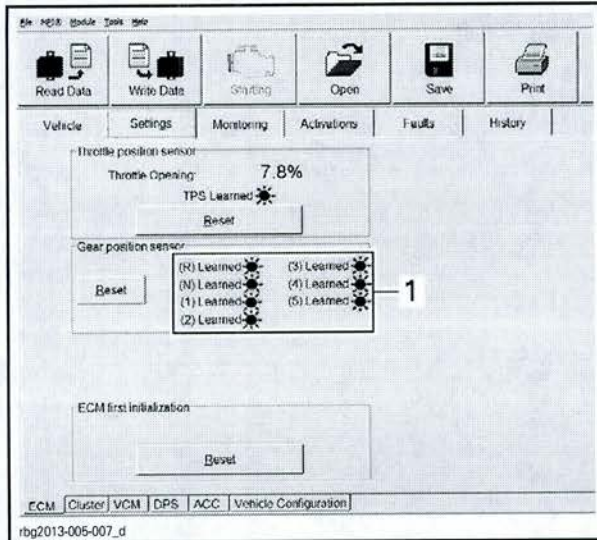
NOTE: During the GBPS learning procedure, the cluster may show an orange screen and numerous indicator lights may come on (CHECK ENG, VSS, ABS, LIMP HOME, etc).



GEAR POSITION SENSOR LEARNING LEADS

1. Wait until the gear LED turns green (learned) before shifting

4. All gear position sensor LEDs must be green in B.U.D.S. to confirm the GBPS learning is completed.

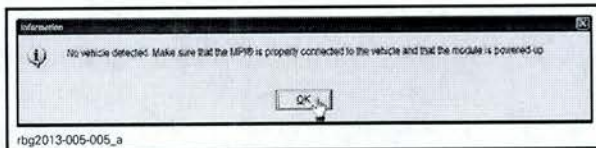


ALL GEARS LEARNED

1. All gear position sensor LEDs ON

5. Turn ignition key OFF.

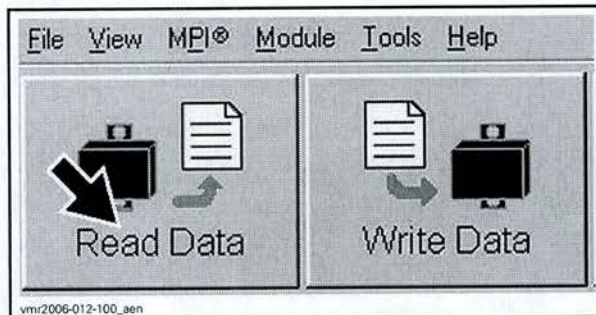
6. Wait for the following message to appear.



7. Turn the ignition key ON and wait until the message vanishes. ◀

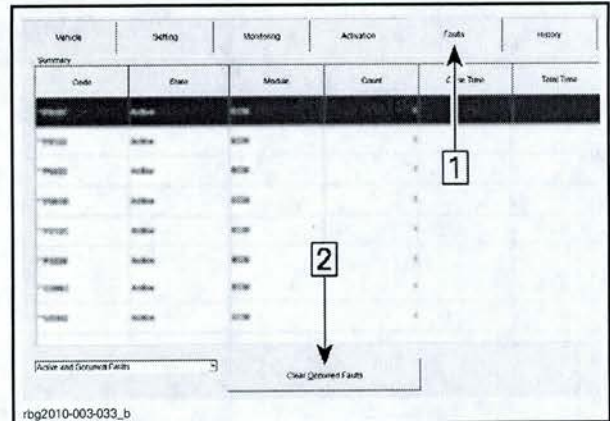
► Clearing Faults ◀

1. ► In B.U.D.S., click on Read Data.



READ DATA BUTTON

2. Click the items in the illustrated order.

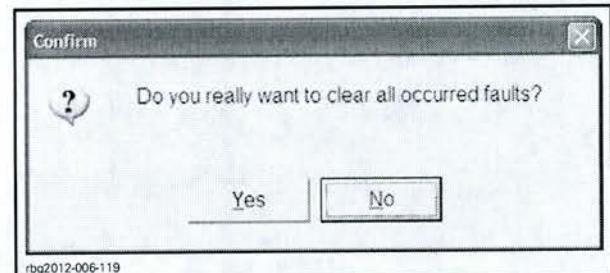


CLEARING FAULTS

Step 1: Faults

Step 2: Click "Clear Occurred Faults" button

3. When the following message appears, click the "Yes" button.

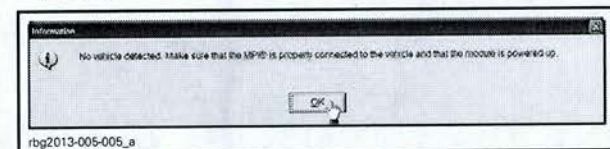


CONFIRM CLEAR FAULTS REQUEST - YES

NOTE: To clear all faults, it may be necessary turn the ignition key OFF, wait a few seconds, turn the ignition key back ON and activate the Clear Occurred Faults button once more.

4. Turn ignition key OFF.

5. When the following message appears, turn ignition key to ON and wait until the message vanishes.



6. Click on the Clear Occurred Faults button again and ensure all faults are cleared.

7. Turn ignition key OFF.

NOTICE To avoid potential vehicle damage, it is very important to turn ignition key off BEFORE exiting B.U.D.S. or unplugging the MPI-2 diagnostic cable from the vehicle.

8. Unplug MPI-2 diagnostic cable from vehicle.

9. Remove floor jack from under vehicle. ◀

PROCEDURE 3

NOTE: To be carried out only on 2011 vehicles on which *WARRANTY CAMPAIGN 2011-0008 OR 2011-0013* has not been done.

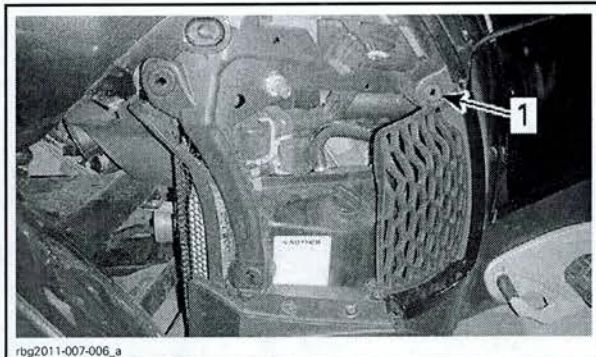
1. Remove the middle side panel.



rbg2010-007-013_a

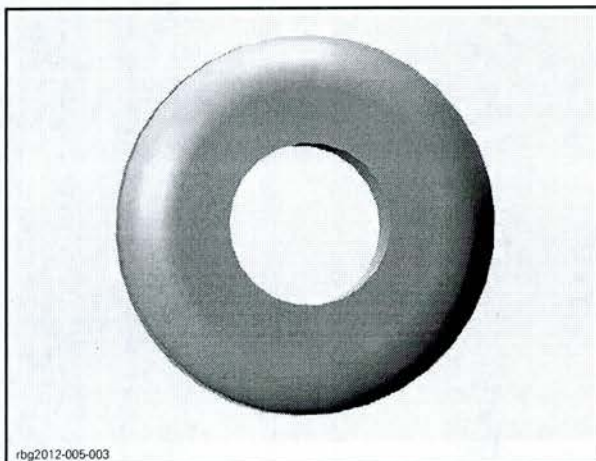
1. Middle side panel

2. Identify grommet type.



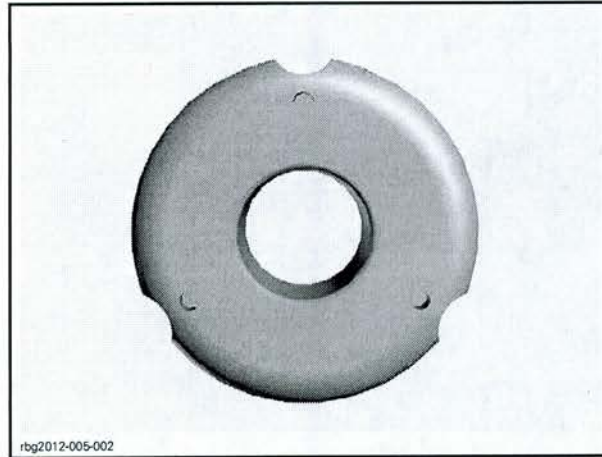
rbg2011-007-006_a

LH SIDE OF VEHICLE SHOWN
1. Check this grommet ONLY



rbg2012-005-003

OLD TYPE - SMOOTH OUTER EDGE



rbg2012-005-002

NEW TYPE - NOTCHES ON THE OUTER EDGE AND MOLDED STEEL WASHER

GROMMET TYPE	ACTION
Old Grommet type	Replace by (P/N 705 003 264)
New Grommet type	No action required

3. If required, remove the grommet using a flat screwdriver.
4. Scrape off any remaining grommet and glue residue from area where grommet was glued.
5. Install the new grommet.
6. Repeat steps on the other side of the vehicle.

WARRANTY

Submit a campaign claim using the following information. This will credit labor for the software update and grommet replacement.

If applicable, claim the throttle body assembly under normal warranty. The B.U.D.S. .mpem file will be requested when processing the warranty claim.

If required, claim middle side grommets under a pre-delivery type claim. No labour will be paid as it is already included with the campaign claim.

2011 Models

REPAIR (ECM AND TCM SOFTWARE UPDATES)	
Campaign Number	2011-0016
Claim Type	Campaign Claim
Action	Repair
Flat Rate Time	0.3 hour

Click in the **Repair** check box.

*Action

Inspect

Repair

Upload File

mbg2012-010-004_ben

2012 Models

REPAIR (ECM AND TCM SOFTWARE UPDATES)	
Campaign Number	2012-0006
Claim Type	Campaign Claim
Action	Repair
Flat Rate Time	0.3 hour

Click in the **Repair** check box.

*Action

Inspect

Repair

Upload File

mbg2012-010-004_ben

► SERIAL NUMBERS LISTING OF 2011 INVOLVED VEHICLES ◀

Model: A3BB

000872
002188

Model: A4BB

000139	From 000567 to 000570	000653	000965	From 001193 to 001194
000253	000614	From 000655 to 000656	001093	001213
From 000260 to 000261	000616	000658	001095	001218
000271	000637	000723	001097	001220
000378	000639	000730	From 001099 to 001104	001222
000499	000644	000857	001160	
From 000554 to 000556	000647	000938	001166	
000560	From 000649 to 000650	000947	001169	

Model: A4BD

000557	From 000561 to 000562	000578
000559	From 000574 to 000576	000712

Model: A4BF

000008	000576	001075	001207	001535
000153	000901	001078	001210	From 001915 to 001920
000321	000905	001080	001285	002191
000535	000908	001154	From 001287 to 001289	002196
000547	000910	From 001156 to 001162	From 001291 to 001293	From 002198 to 002200
000553	000913	001165	001295	
000557	From 000916 to 000920	From 001167 to 001170	001303	
000560	From 000923 to 000924	From 001173 to 001174	From 001307 to 001308	
From 000573 to 000574	From 001071 to 001072	001201	From 001518 to 001519	

Model: A4BH

000003	000024	000690	000848
000005	From 000378 to 000379	000692	From 000850 to 000851
000015	000386	From 000697 to 000698	From 001089 to 001090
From 000021 to 000022	From 000687 to 000688	000844	001092

Model: A7BA

001991

Model: A7BD

000081	000098
	000581

Model: A9BB

000508	000522	From 000748 to 000749	000754	001063
000514	000737	000751		001223

Model: A9BC

001165

Model: B5BA

000060
000711

Model: B9BB

000326	000372	000785	001659	From 001682 to 001683
From 000362 to 000363	000382	001060	001664	001686
From 000368 to 000369	000385	001082	001674	001695

Model: B9BB (cont'd)

From 001704 to 001705

From 001816 to 001817

From 001832 to 001833

002066

002068

002073

002103

002127

► SERIAL NUMBERS LISTING OF 2012 INVOLVED VEHICLES ◀

Model: A3CA

000755	001445	002095	002098
001103	001872		002135

Model: A3CB

000151

Model: A4CA

000036	000847	001066	001470	001586
000823	000862	001224		001739

Model: A4CB

000255	000419	001080	002342	002353
000260	From 000706 to 000708	From 001087 to 001088	002344	002358
000265	000894	001259	002351	
From 000403 to 000404	From 001076 to 001078	002218		

Model: A4CC

000267	000529	000791	001010	001198
000304	000578	000826	001048	001201
000319	000592	000932	001085	001232
000430	000602	000954	001133	
000526	000754	000964	From 001186 to 001187	

Model: A4CD

000011	000370	From 000402 to 000403	000407
000363	000397		From 001308 to 001309

Model: A4CE

002239	002330
	002340

Model: A4CF

000391

Model: A4CG

000122	000844	001314	001801	001900
000508	000863	001459	001806	001906
000550	001000	001512	From 001828 to 001830	
000560	001082	001651	001861	
000699	001181	001713	001881	
000709	001186	001781	001886	

Model: A4CH

000038	000631	000733	000741	002047
000046	From 000635 to 000636	000735	002043	002049

Model: A4CJ

000499
001553

Model: A7CA

000296	001785
001779	002255

Model: A7CC

000765	001300	001677
001059		001680

Model: A7CD

000191 000637
000641

Model: A9CA

000011 001295
000190 001700

Model: A9CB

000168 000995 From 001809 to 001810 002288
000315 001301 002290

Model: A9CC

000487 001485 001606
001108 001949

Model: A9CD

From 000535 to 000536
000539

Model: B5CA

000129 001276 001611 001621 001771
000910 001278 001619 001759 001773

Model: B5CB

000354 From 000950 to 000951 001399 001587 001589
000381 From 001240 to 001241 001575 001595

Model: B5CC

000145 000631 001073
From 000615 to 000616 000850 001259

Model: B5CD

002224
002230

Model: B9CA

000345 001093 001333
000830 001517

Model: B9CB

000110 000390 001538 001772
000178 001179 001684 001842
000386 001190 001689 001845
000388 001470 001705 From 001847 to 001848

Model: B9CC

000230
001201

Model: B9CD

000006 000919 001709 001886 002051
From 000009 to 000010 001291 From 001713 to 001715 001892 002053
From 000022 to 000023 001318 001717 001895 002059
000037 001325 From 001721 to 001722 From 001993 to 001994 002085
000164 001420 001733 From 001996 to 001997 002089
000187 From 001423 to 001424 From 001735 to 001737 From 002001 to 002002
000825 From 001706 to 001707 From 001739 to 001740 002004

Model: B9CE

001302
001832

Model: B9CF

From 000647 to 000648	000988	001737	002016
000652	From 000991 to 000992	001742	002019
000656	000995	002011	
000661	From 001732 to 001733	002013	

Model: B9CG

000591	001858
000790	001861
000792	

Model: B9CH

001555