

SB-10055419-7844

Campaign No. 2013110012, December 2013

TO: ALL MERCEDES-BENZ CENTERS

SUBJECT: **Model 231 (SL), Model Year 2013**
Rework Rear Center Section Seam Seal

This Service Campaign has been initiated because Daimler AG (DAG), manufacturer of Mercedes-Benz vehicles, has determined that the seam seal at the rear center section may not be to specification possibly allowing moisture to enter the spare tire well. To correct this condition, an authorized Mercedes-Benz dealer will rework the seam seal at the rear center section at the next workshop visit.

Prior to performing this Service Campaign:


- Please check VMI to determine if the vehicle is involved in the Campaign and if it has been previously repaired.
- Please review the entire Service Campaign bulletin and follow the repair procedure exactly as described.

Approximately 293 vehicles are affected.

Order No. P-SC-2013110012

This bulletin has been created and maintained in accordance with MBUSA-SLP S423QH001, Document and Data Control, and MBUSA-SLP S424HH001, Control of Quality Records.

Procedure

1.  Remove fasteners then remove spare wheel well cover (A, Figure 1).

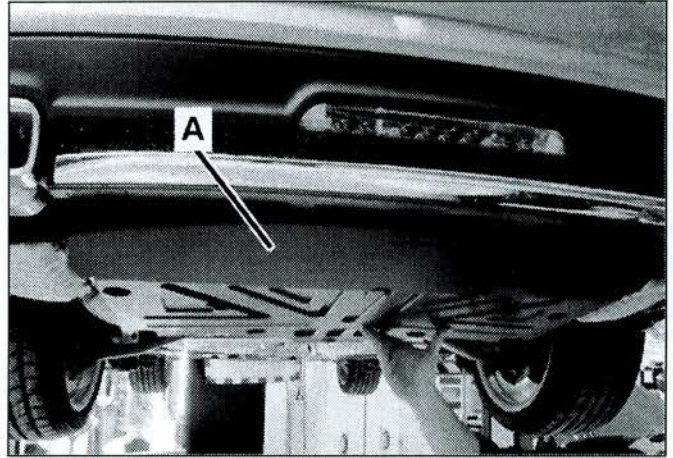


Figure 1

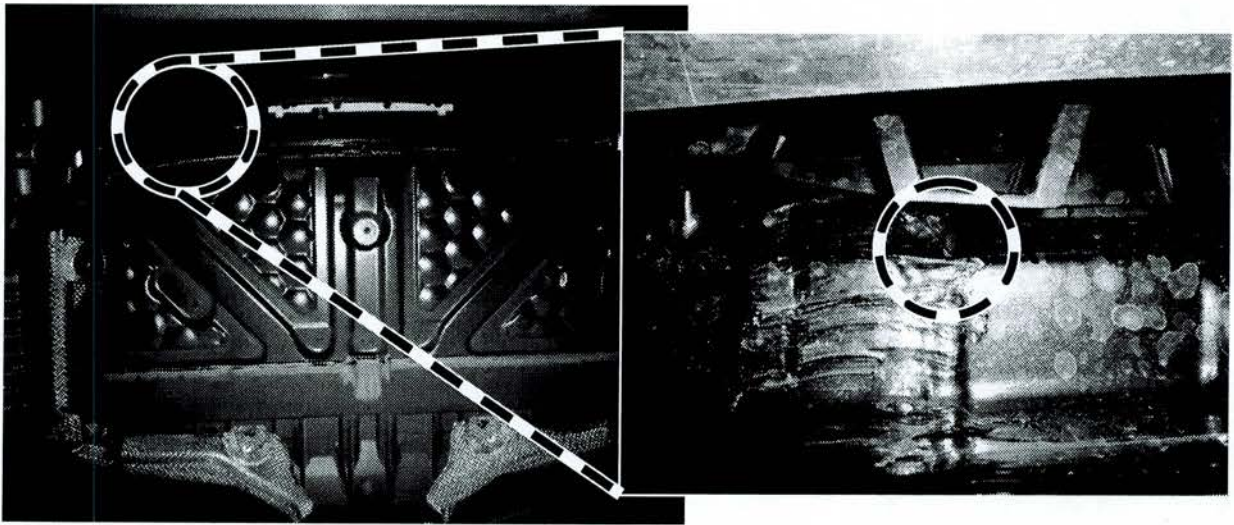




Figure 1

2. Using a long brush, rework affected PVC seam from below (on left side) with seam sealant material (Figure 2).

 **Note:**

Removal of the bumper is not necessary.

3.  Assemble in reverse order.

Primary Parts Information

Qty.	Part Name	Part Number	Estimated Replacement Rate
1 ¹⁾	Sprayable seam seal	A 002 989 84 20	100%

¹⁾ 1 container is sufficient for 4 vehicles. Submit as local purchase SPT00708 qty of 1, handling is included.

i Note:

- Please be aware that only the part number(s) referenced in the Campaign Bulletin is/are approved for use to repair the vehicle. Repairs performed using any other part(s) will not have been performed in accordance with the campaign. Accordingly, warranty claims submitted with reference to an improper part number(s) will be denied.
- The following allowable labor operation should be used when submitting a warranty claim for this repair:

Warranty Information

Operation: Rework rear center section seal seam (02-8346).

Damage Code	Operation Number	Labor Time (hrs.)
97 900 35 7	02-8346	0.5