

**Service Information System**

Shutdown SIS

[Previous Screen](#)

SB-10055663-7997

Welcome: chrismk2

< Product: NO EQUIPMENT SELECTED
 Model: NO EQUIPMENT SELECTED
 Configuration: NO EQUIPMENT SELECTED

Special Instruction**Oxygen Sensor Calibration Procedure for the CT Vocational Trucks{7000}**

Media Number -REHS9183-00

Publication Date -21/04/2014

Date Updated -21/04/2014

i05781758

Oxygen Sensor Calibration Procedure for the CT Vocational Trucks{7000}

SMCS - 7000

On Highway Truck:

CT660 (S/N: TGA1-UP; TGD1-UP; TJD1-UP; TEJ1-UP; TRK1-UP; TKL1-UP; TEM1-UP; TEP1-UP;
 TGR1-UP; TGS1-UP; TJS1-UP; TGT1-UP; TGW1-UP; TSW1-UP; TEY1-UP; TSY1-UP; TEZ1-UP;
 TGZ1-UP)

Introduction

This Special Instruction explains the Oxygen Sensor (O2S) Calibration Procedure that must be followed when replacing or calibrating the O2S on the CT Vocational trucks.

Parts Information

Table 1

| Required Equipment | | |
|--------------------|-----------------------------|----------------------------|
| QTY | Version Number | Description |
| 1 | Build v38.1.21.201402031337 | Engine Diagnostic Software |

Procedure





Illustration 1

g03666335

NOTICE

The O2S needs to be installed in the exhaust before calibrating the sensor (Illustration 1).



Illustration 2

g03666347

1. Connect Personal Computer (PC) with engine diagnostic software. Turn Key ON, Engine OFF (KOEO).
2. Clear exhaust fumes by running the Relative Compression Test before calibrating the O2S. Disregard Relative Compression Test results (Illustration 2).

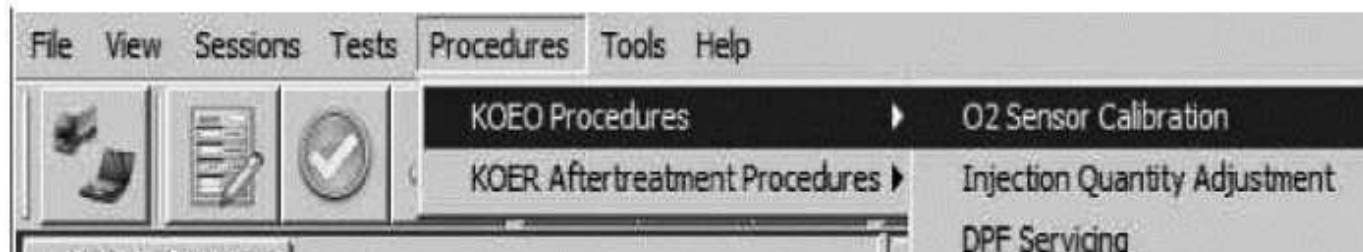


Illustration 3

g03666348

3. Open O2 Sensor Calibration Procedure (Illustration 3).

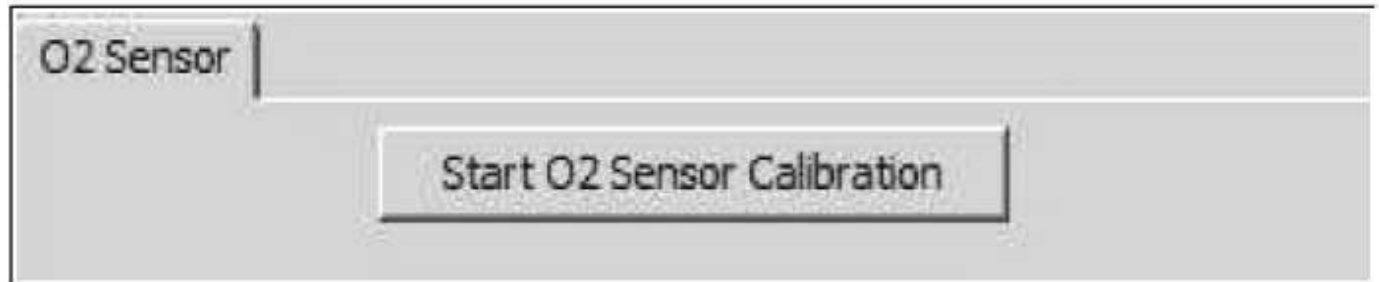


Illustration 4

g03666351

4. Press the Start O2 Sensor Calibration button (Illustration 4).

Note: Calibration takes about 5 minutes and 40 seconds to complete.

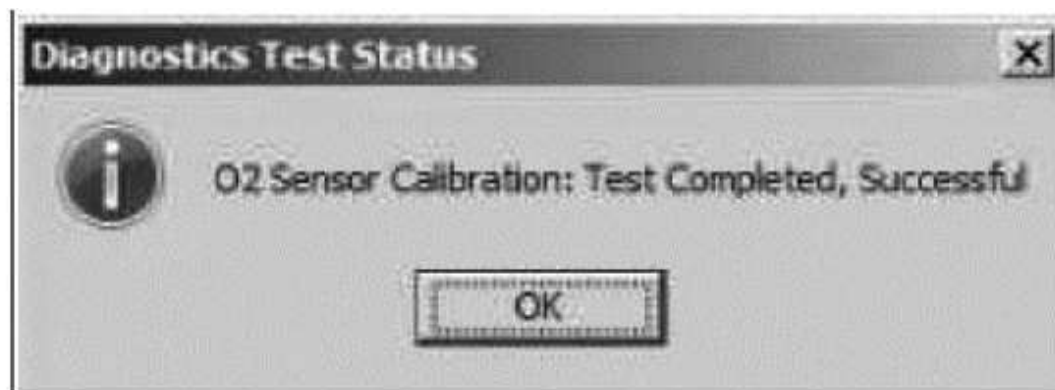


Illustration 5

g03666352

5. When calibration is complete, a popup message will display O2 Sensor Calibration: Test Completed, Successful, press OK button (Illustration 5).

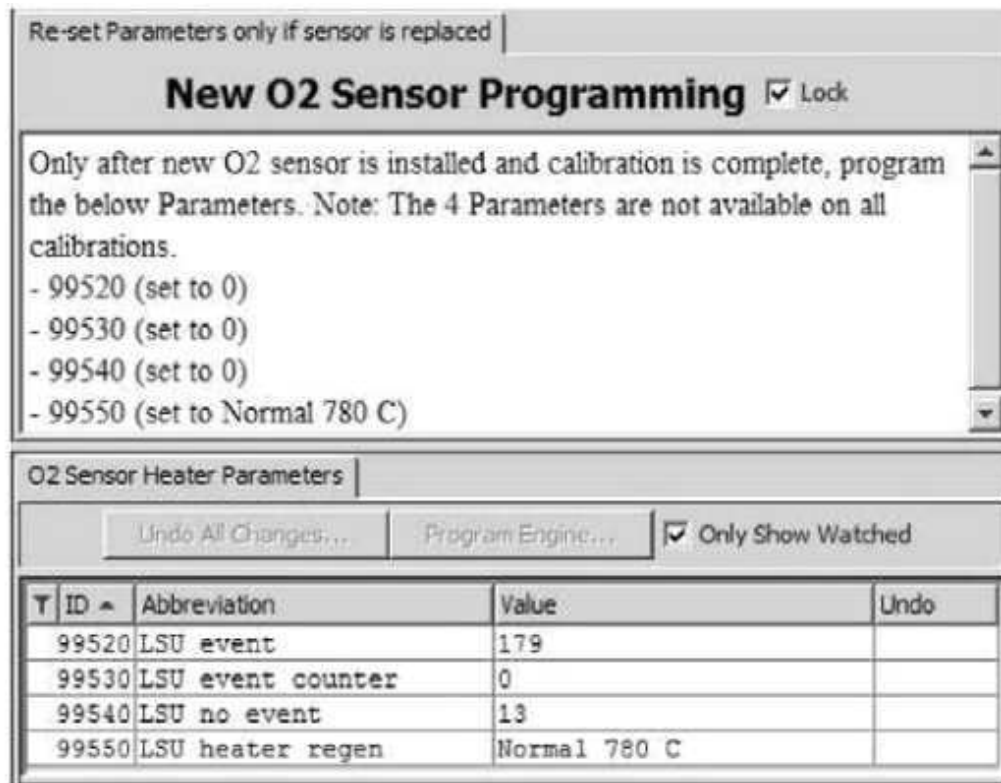


Illustration 6

g03666354

6. Reset Parameters ONLY if a new O2S is installed (Illustration 6):
- o 99520 (Set to 0)
 - o 99530 (Set to 0)
 - o 99540 (Set to 0)
 - o 99550 (Set to Normal 780 C)

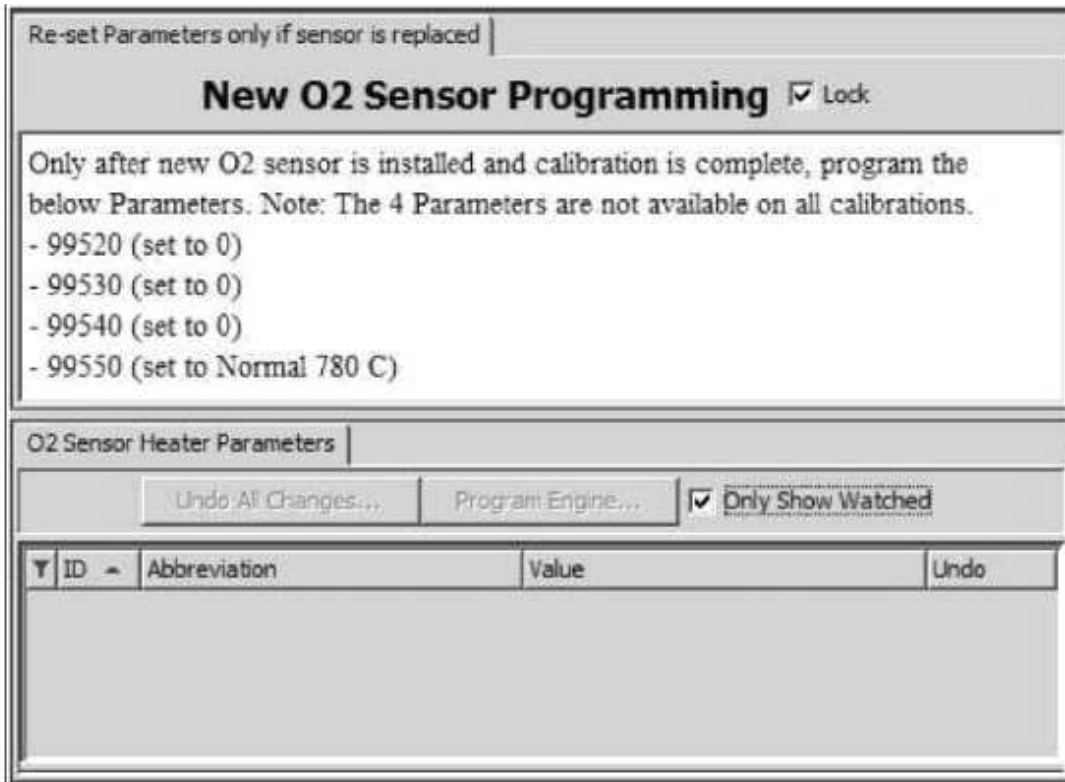


Illustration 7

g03666355

Note: Not all calibrations have the Parameters in lower part of window as described in previous Step (Illustration 7).

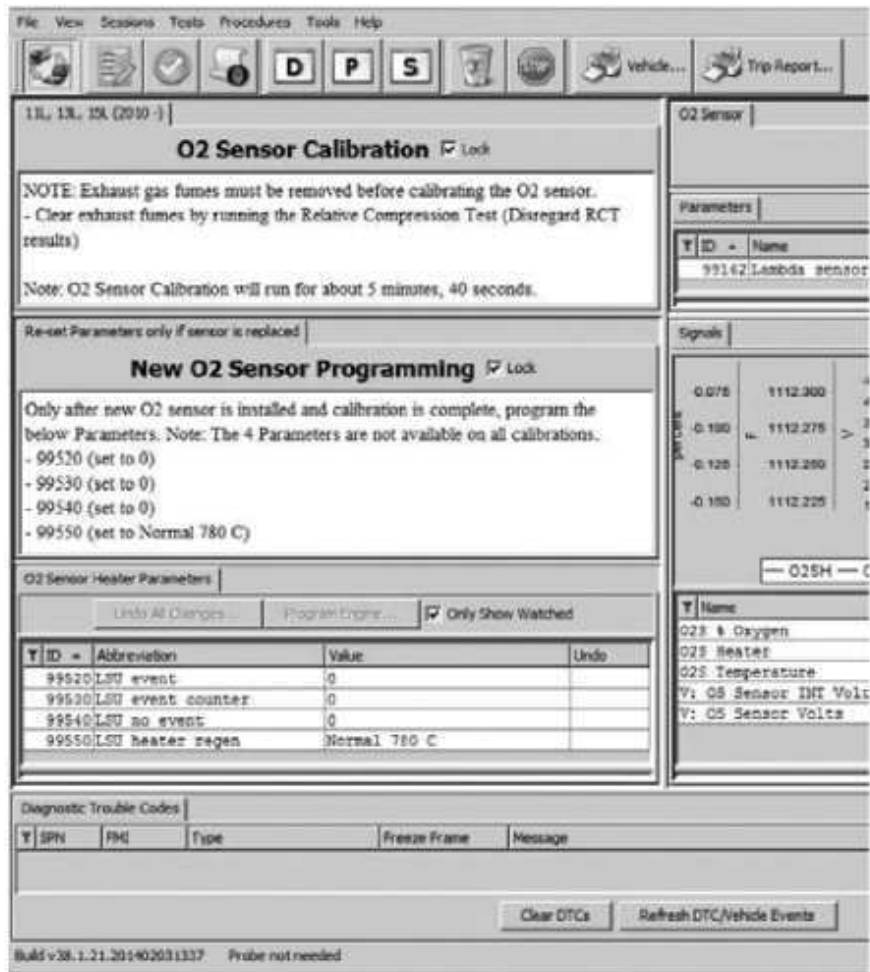


Illustration 8

g03666359