



Technical Service Bulletin

SB-10056334-9344

SUBJECT:			No: TSB-14-54-009
HEADLIGHT REMOVAL AND INSTALLATION – SERVICE MANUAL REVISION			DATE: July, 2014
			MODEL: See below
CIRCULATE TO:	<input type="checkbox"/> GENERAL MANAGER	<input type="checkbox"/> PARTS MANAGER	<input checked="" type="checkbox"/> TECHNICIAN
<input checked="" type="checkbox"/> SERVICE ADVISOR	<input checked="" type="checkbox"/> SERVICE MANAGER	<input type="checkbox"/> WARRANTY PROCESSOR	<input type="checkbox"/> SALES MANAGER

PURPOSE

A “DRL sub harness” has been established for affected vehicles. Use this part where applicable instead of replacing the headlight assembly.

This TSB updates the service manual with instructions for using the sub harness to repair the DRL function of the head light.

AFFECTED VEHICLES

2009–2011 Lancer
 2009–2011 Lancer Sportback
 2008–2011 Lancer Evolution
 2010–2012 Outlander

AFFECTED SERVICE MANUALS

2009–2011 Lancer/Lancer Sportback Service Manual – Group 54A – Chassis Electrical –>Headlight –> Removal and Installation

2008–2011 Lancer Evolution Service Manual – Group 54A – Chassis Electrical –>Headlight Removal and Installation

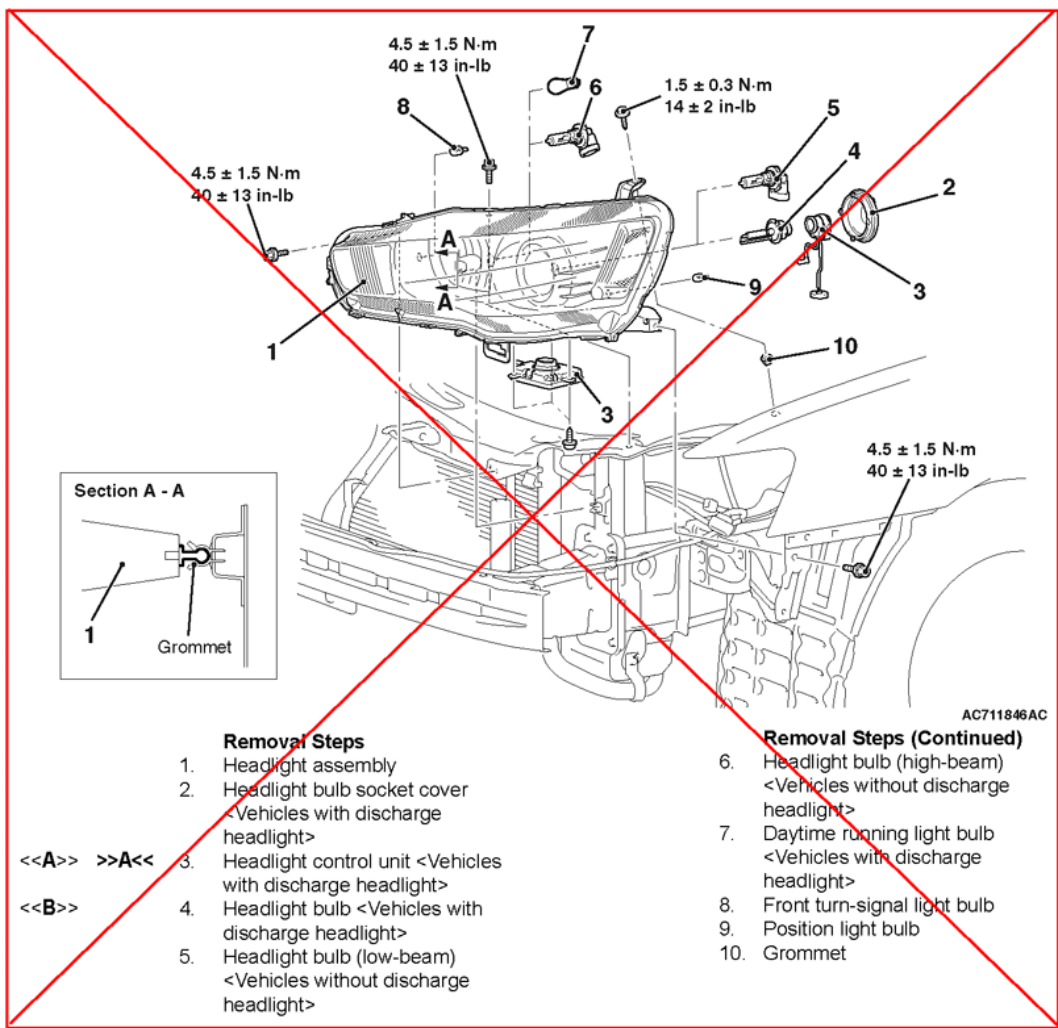
2010–2012 Outlander Service Manual – Group 54A – Chassis Electrical –>Headlight –> Headlight Removal and Installation

Please make the changes shown on pages 2 and 3 to the listed Lancer, Lancer Evolution and Lancer Sportback service manuals, Group 54A – Chassis Electrical →Headlight → Headlight Removal and Installation

**CHASSIS ELECTRICAL
 HEADLIGHT**

HEADLIGHT REMOVAL AND INSTALLATION

<p>Pre-removal operation Front bumper and radiator grille assembly removal (Refer to GROUP 51 –Front Bumper Assembly and Radiator Grille).</p>	<p>Post-installation operation</p> <ul style="list-style-type: none"> • Front bumper and radiator grille assembly installation (Refer to GROUP 51 –Front Bumper Assembly and Radiator Grille). • Check the beam direction of the headlight (Refer to Headlight Aiming).
--	--



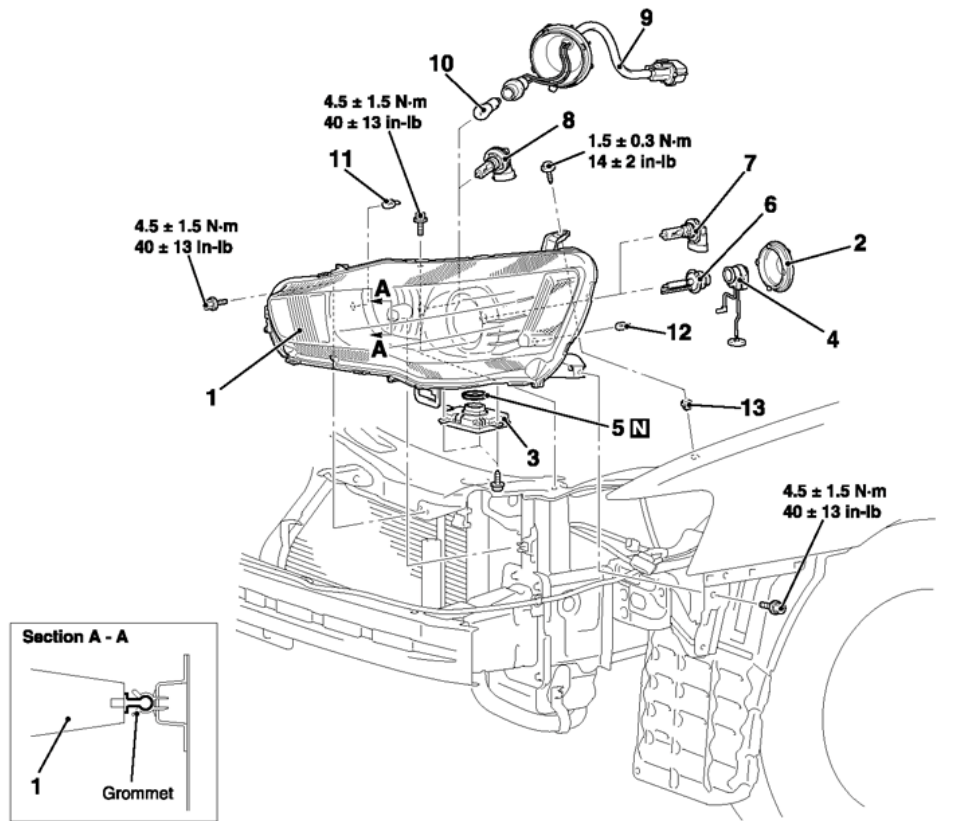
<Old>

Insert the Attached sheet 2 (2/2).

<New>

- Removal Steps**
1. Headlight assembly
 2. Headlight bulb socket cover
 <Vehicles with discharge headlight>
 3. Headlight control unit <Vehicles with discharge headlight>
 4. Headlight bulb <Vehicles with discharge headlight>
 5. Headlight bulb (low-beam)
 <Vehicles without discharge headlight>

- Removal Steps (Continued)**
6. Headlight bulb (high-beam)
 <Vehicles without discharge headlight>
 7. Daytime running light bulb
 <Vehicles with discharge headlight>
 8. Front turn-signal light bulb
 9. Position light bulb
 10. Grommet



ACE01237AB

Removal Steps

1. Headlight assembly
2. Headlight bulb socket cover <Vehicles with discharge headlight>
3. Headlight control unit <Vehicles with discharge headlight>
- <<A>> >>A<< 4. Headlight control unit cable <Vehicles with discharge headlight>
5. Headlight gasket <Vehicles with discharge headlight>
- <> 6. Headlight bulb <Vehicles with discharge headlight>

Removal Steps

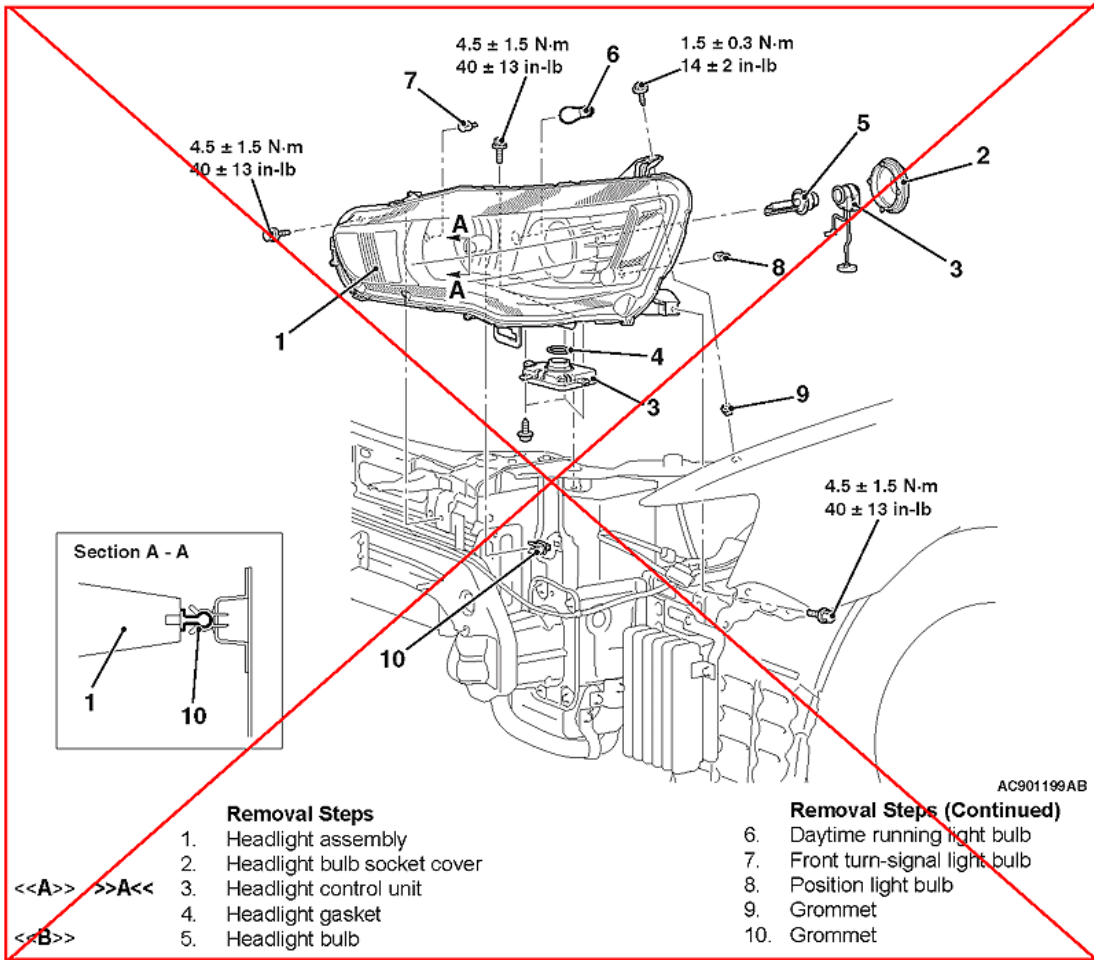
7. Headlight bulb (low-beam) <Vehicles without discharge headlight>
8. Headlight bulb (high-beam) <Vehicles without discharge headlight>
9. DRL sub harness <Vehicles with discharge headlight>
10. Daytime running light bulb <Vehicles with discharge headlight>
11. Front turn-signal light bulb
12. Position light bulb
13. Grommet

Please make the changes shown on pages 4 and 5 to the 2010-2012 Outlander service manuals, Group 54A - Chassis Electrical ->Headlight -> Headlight Removal and Installation

**CHASSIS ELECTRICAL
 HEADLIGHT**

<VEHICLES WITH DISCHARGE HEADLIGHT>

<p>Pre-removal operation Front bumper assembly removal (Refer to GROUP 51 -Front Bumper Assembly).</p>	<p>Post-installation operation</p> <ul style="list-style-type: none"> • Front bumper assembly installation (Refer to GROUP 51 - Front Bumper Assembly). • Check the beam direction of the headlight (Refer to Headlight Aiming).
--	---

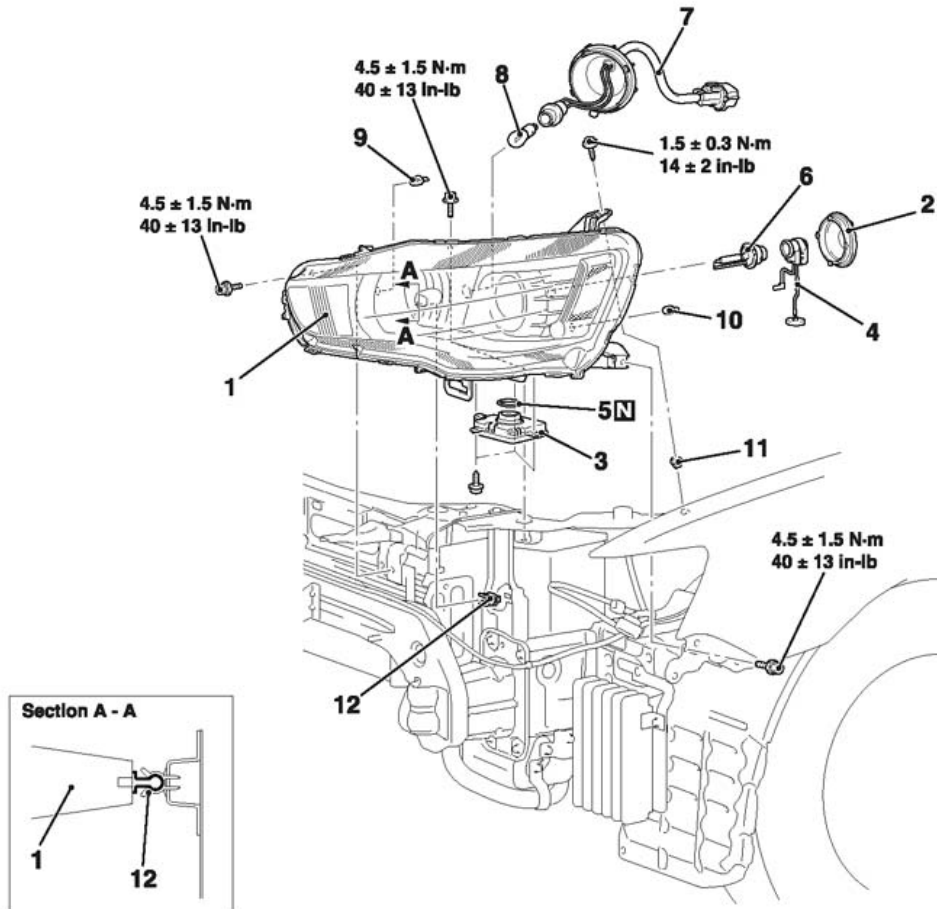


- | | | |
|---|--|---|
| <p><<A>> >>A<<
 <></p> | <p>Removal Steps</p> <ol style="list-style-type: none"> 1. Headlight assembly 2. Headlight bulb socket cover 3. Headlight control unit 4. Headlight gasket 5. Headlight bulb | <p>Removal Steps (Continued)</p> <ol style="list-style-type: none"> 6. Daytime running light bulb 7. Front turn-signal light bulb 8. Position light bulb 9. Grommet 10. Grommet |
|---|--|---|

<Old>

Insert the Attached sheet 3 (2/2).

<New>



ACE01238AB

- Removal Steps**
1. Headlight assembly
 2. Headlight bulb socket cover
 3. Headlight control unit
 4. Headlight control unit cable
 5. Headlight gasket
 6. Headlight bulb

- Removal Steps**
7. DRL sub harness
 8. Daytime running light bulb
 9. Front turn-signal light bulb
 10. Position light bulb
 11. Grommet
 12. Grommet

<<A>> >>A<<

<>